

Nutalis mini Sigor Nutalis Light Cube



# Nutalis mini Sigor Nutalis Light Cube Instruction Manual

[Home](#) » [SIGOR](#) » Nutalis mini Sigor Nutalis Light Cube Instruction Manual 

## Contents

- [1 Nutalis mini Sigor Nutalis Light Cube](#)
- [2 Instructions for use](#)
- [3 Technical Specification](#)
- [4 Charger](#)
- [5 Use instructions](#)
- [6 Documents / Resources](#)
  - [6.1 References](#)
- [7 Related Posts](#)

# Nutalis

## Nutalis mini Sigor Nutalis Light Cube



Instructions for use: Nutalis mini – rechargeable LED table lamp

## **Nutalis mini**

Rechargeable LED table lamp

### **Instructions for use**

#### **1. Use purpose**

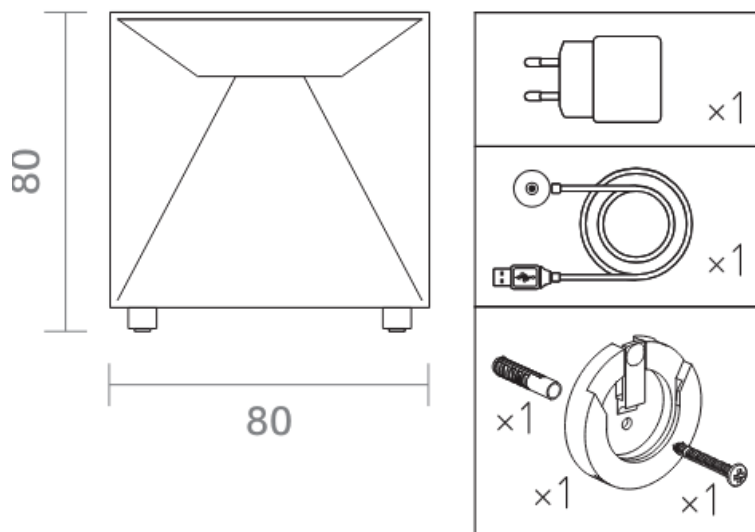
This product is meant to be used for lighting only. It must not be exposed to heavy mechanical load or strong pollution. The lamp is splash-proof according to ingress protection code IP54. Clean only with mild soap solution, protect from aggressive atmosphere.

### **Technical Specification**

- Power: 2.2 W
- Voltage: DC 3.7 V
- Luminous flux: at 2,200 K 120 lm, at 2,700 K 130 lm
- Luminous colour: 2,200 K and 2,700 K
- CRI: 85
- Number of LED: 40
- Rechargeable battery: Li-Ion, 3,000 mAh
- Charging time: 4–5 h
- Battery life: up to 9 h
- Protection class IEC: III, SELV
- Ingress protection code: IP54, splash water protected
- Dimmable: Yes, max. 20 %

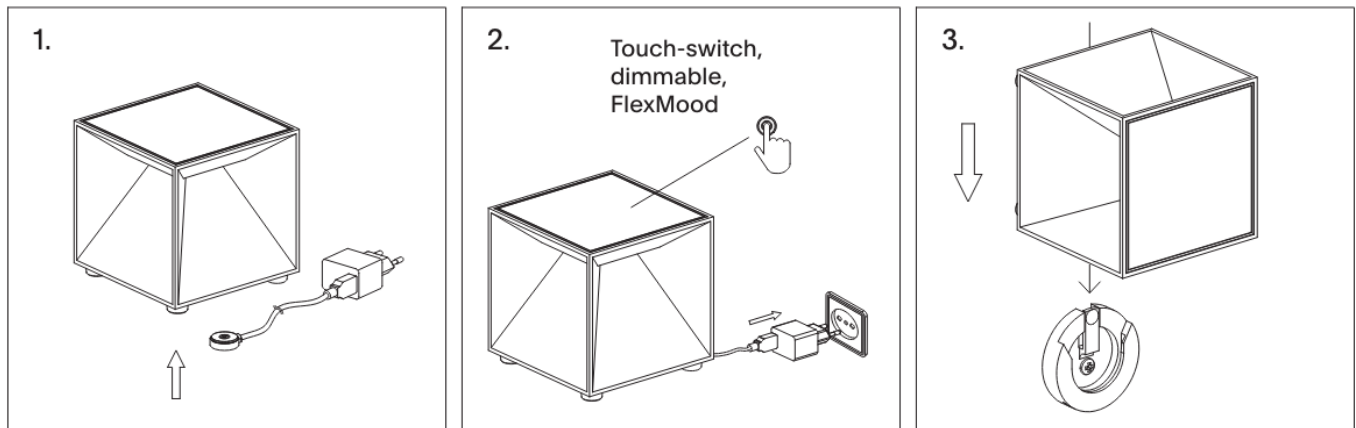
### **Charger**

- Input: 100–240 V ~, 50/60 Hz
- Output: 5 V, 1 A
- Length of cable: 1.2 m



### **Use instructions**

1. Before first use, please remove the protective cover and fully charge the battery.
2. When charging, the indicator light at the top is red. When fully charged, it turns off.
3. With the first touch of the touch-switch, you switch the luminaire on with 2,700 K warm white. With the second touch, you switch the light colour to 2,200 K extra warm. With the third touch, you switch the luminaire off again.
4. Press and hold the touch-switch to gradually increase the light intensity. After four seconds, the light has reached its full light intensity. Press and hold the switch again to lower the light intensity again.




## 5. Important notice

- The support surface for the lamp must not exceed a 15° tilt or it will fall.
- The battery has an overcharge protection and can be replaced.
- In case of need of repair, return to your local dealer.
- Only use the supplied power supply unit for charging!
- The old device and battery must be disposed of separately from household waste.
- Please observe the disposal instructions in your city or municipality.



Sigor Licht GmbH  
Eichenhofer Weg 81, 42279 Wuppertal, Germany phone +49 2339 1261-0  
[www.sigor.de](http://www.sigor.de), [info@sigor.de](mailto:info@sigor.de)

## Documents / Resources

	<p><a href="#">SIGOR Nutalis mini Sigor Nutalis Light Cube</a> [pdf] Instruction Manual</p> <p>Nutalis mini Sigor Nutalis Light Cube, Nutalis mini, Sigor Nutalis Light Cube, Nutalis Light Cube, Light Cube, Cube</p>
--	--

References

- [User Manual](#)

Manuals+, Privacy Policy

This website is an independent publication and is neither affiliated with nor endorsed by any of the trademark owners. The "Bluetooth®" word mark and logos are registered trademarks owned by Bluetooth SIG, Inc. The "Wi-Fi®" word mark and logos are registered trademarks owned by the Wi-Fi Alliance. Any use of these marks on this website does not imply any affiliation with or endorsement.