



signify RoadView LED Roadway Luminaire Instruction Manual

[Home](#) » [signify](#) » signify RoadView LED Roadway Luminaire Instruction Manual 

signify RoadView LED Roadway Luminaire



Contents

- [1 INSTALLATION INSTRUCTION](#)
- [2 Documents / Resources](#)
- [3 Related Posts](#)

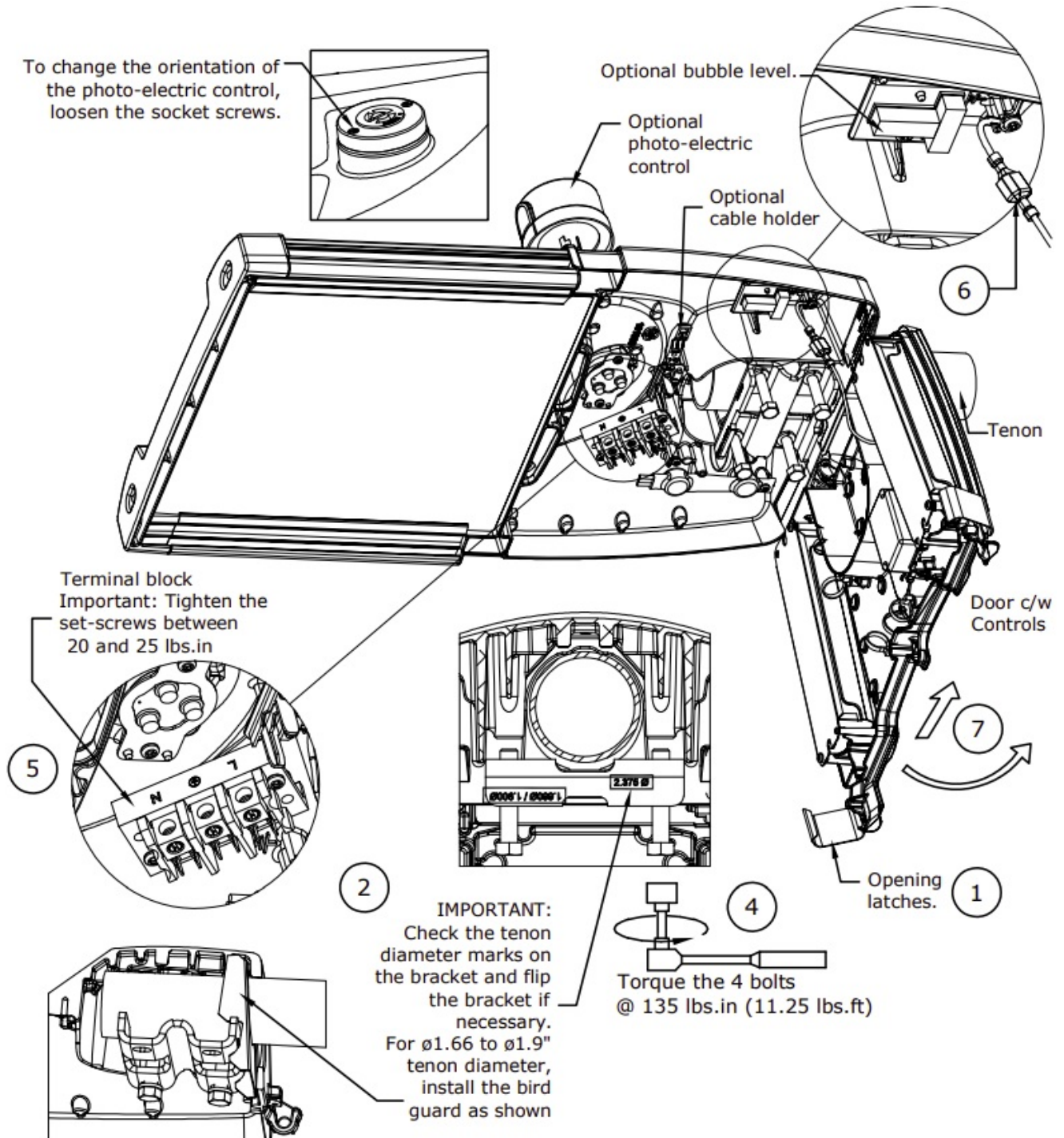
INSTALLATION INSTRUCTION

READ THESE INSTRUCTIONS CAREFULLY BEFORE INSTALLING THIS FIXTURE

CAUTION: THE ELECTRICAL POWER MUST BE DISCONNECTED BEFORE OPENING THE FIXTURE.

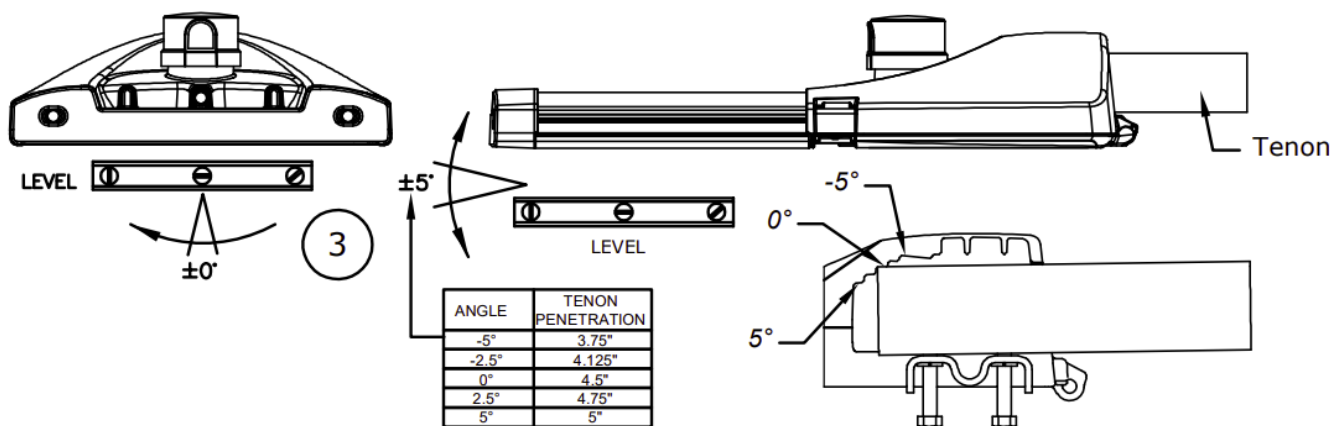
1. Pull the two latches to release the access door.
2. Check the diameter of the tenon and flip the bracket if necessary.

For $\varnothing 1.66$ to $\varnothing 1.9$ " tenon diameter install the bird guard as shown prior to slip the luminaire onto the tenon.



3. Disconnect power and slide the fixture onto the tenon. See table for approximate penetration.

Horizontal angle can be adjusted in 2.5° steps. The optional bubble level may be used.



4. Evenly tighten the four bolts of the bracket.

IMPORTANT: Use a torque wrench and tighten the 4 bolts @ 135 lbs.in (11.25 lbs.ft)

5. Connect the branch circuit to the terminal block. Tighten the set-screws between 20 and 25 lbs.in Use the optional cable holder to attach the branch circuit wires.

– Close the access door.

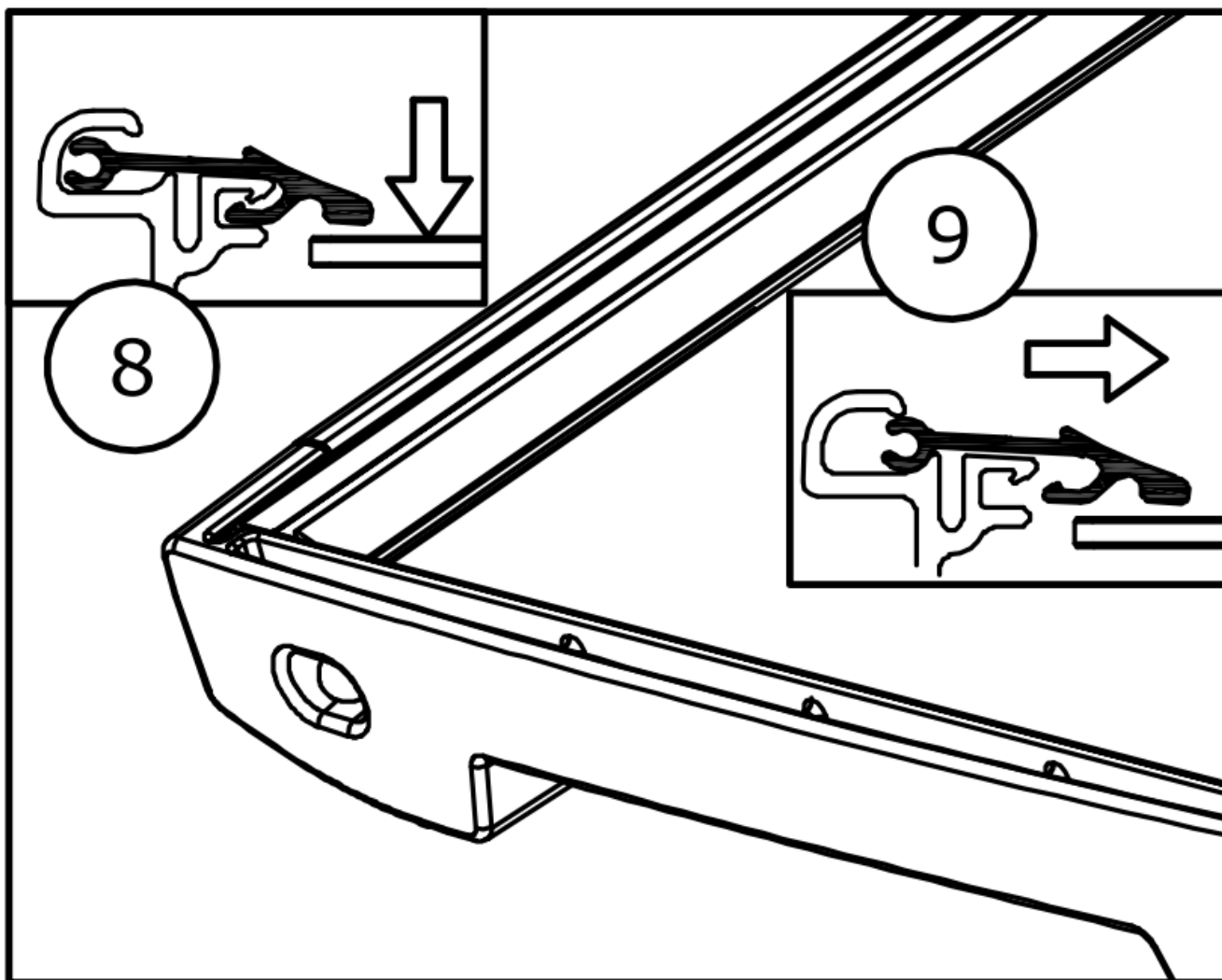
To service the LED driver(s) and controls, the access door carrying these components can be removed:

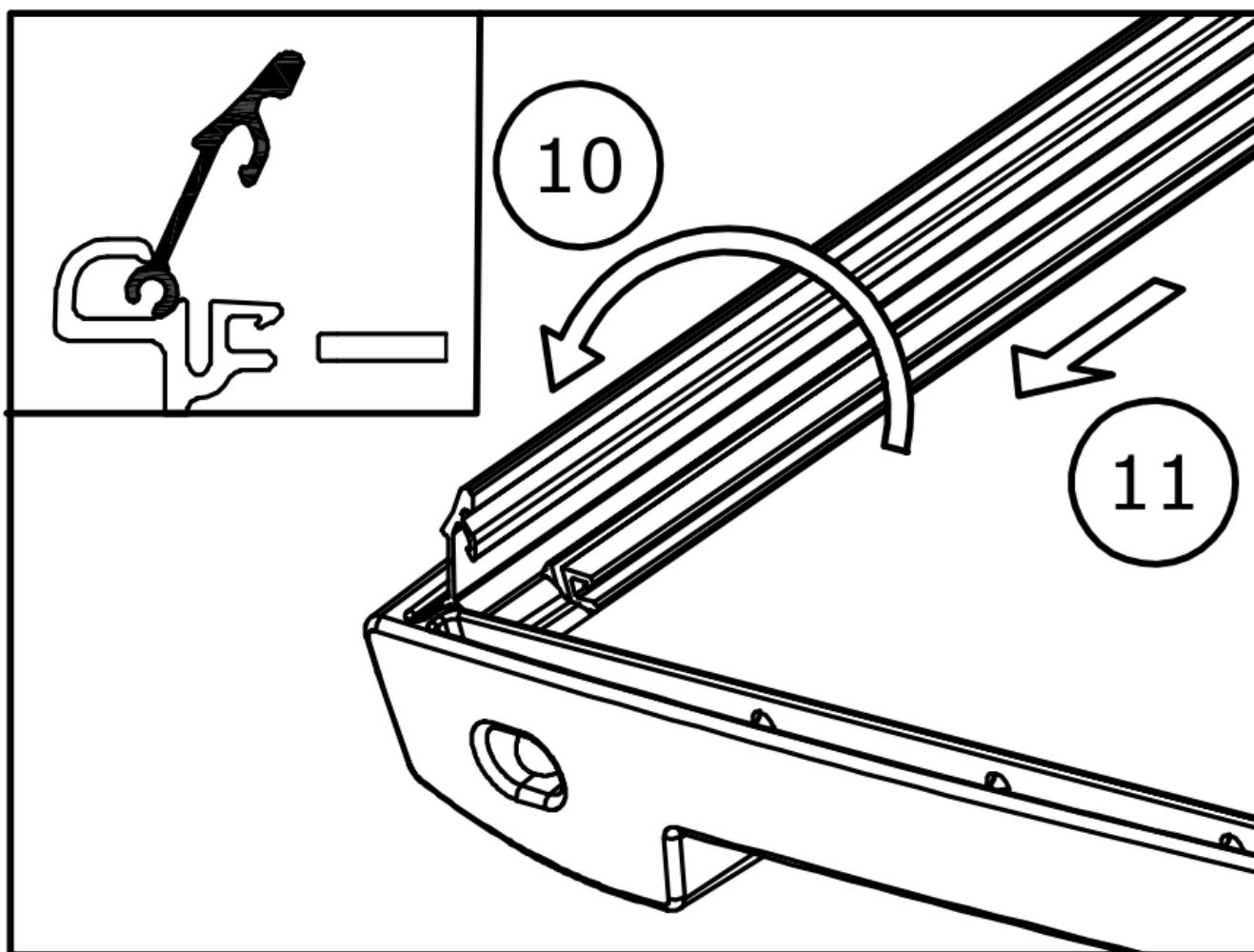
- Disconnect the power.
- Disconnect the multiple connector.

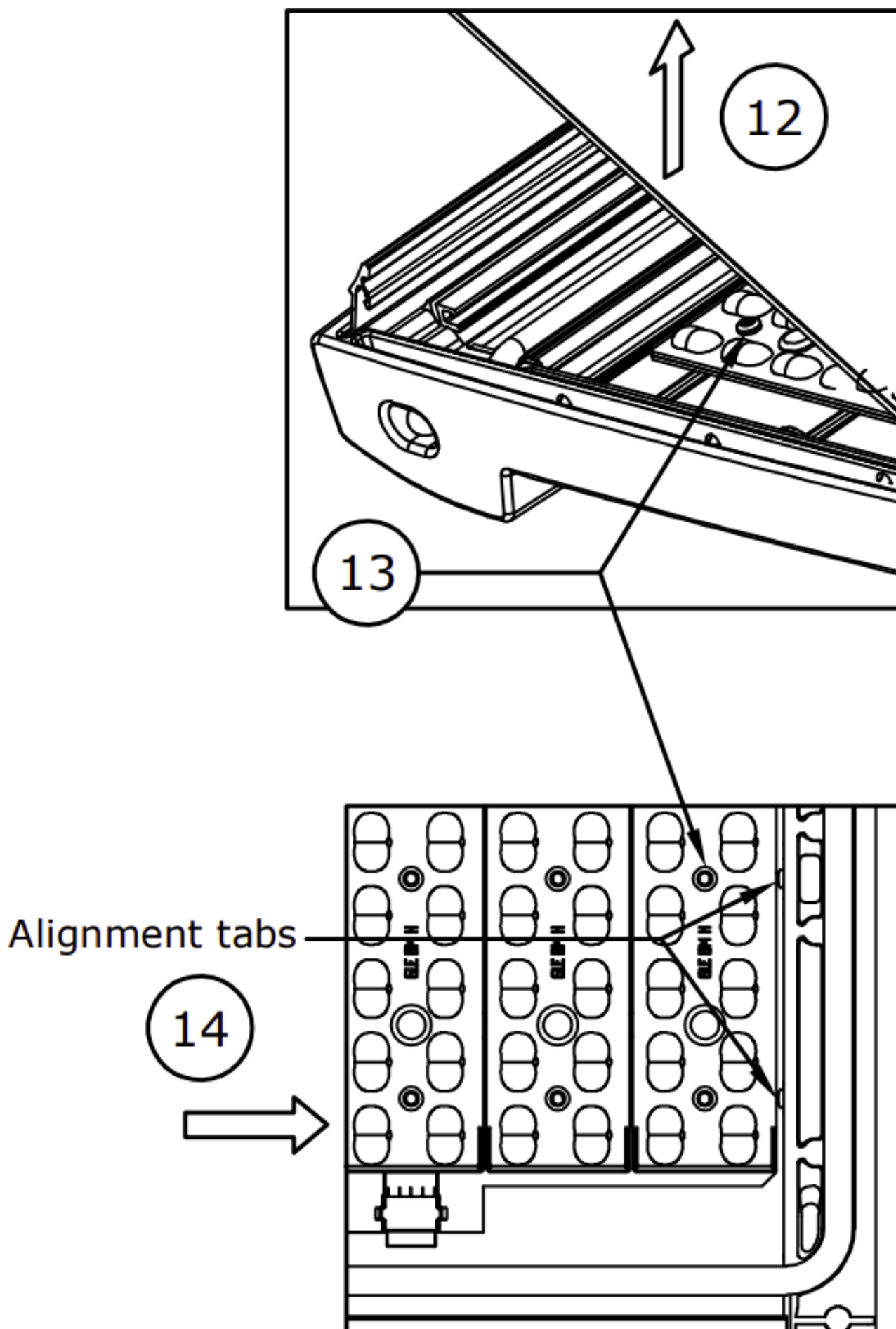
6. Disconnect the housing ground wire.

7. Gently pull the door backwards and then slide the hinge as shown to release the door c/w controls.

To remove the lens:







8. Push firmly on the lens near the hinged side-frame till the latter moves freely.

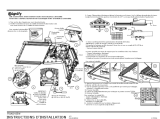
9. Maintain the pressure, pull on the hinged side-frame as shown to release-it.

Caution: At this point the lens is loose.

10. Turn the hinged side-frame.
11. Slide to lock the side-frame in open position.
12. Remove the lens.
To replace the LED board:
 - Disconnect the power.
 - Remove the lens.
13. Remove the LED board screws.
 - Replace the LED board.
14. Align the LED board with the alignment tabs.
 - Tighten the LED board screws @ 15 @ 20 lbs.in



Documents / Resources



[signify RoadView LED Roadway Luminaire](#) [pdf] Instruction Manual
RoadView, LED Roadway Luminaire, Roadway Luminaire, LED Luminaire, Luminaire