

signify ModiFly Linear Wall



signify ModiFly Linear Wall Instruction Manual

[Home](#) » [signify](#) » signify ModiFly Linear Wall Instruction Manual 

Contents

- [1 signify ModiFly Linear Wall](#)
- [2 Product Information](#)
- [3 Product Usage Instructions](#)
- [4 System Overview](#)
- [5 Module Lengths and Standalone Mounting Points](#)
- [6 Installation Instruction](#)
- [7 Sensors in Rows](#)
- [8 Occupancy Sensor Coverage](#)
- [9 Photosensor spatial response](#)
- [10 Documents / Resources](#)
 - [10.1 References](#)



signify ModiFly Linear Wall



Product Information

Specifications:

- **Product Name:** ModiFly Linear Wall Fixture
- **Module Lengths:** 2ft, 4ft, 5ft, 6ft, 8ft
- **Mounting:** Standalone & Continuous Runs
- **Tools Required:** Phillips screwdriver, Flat-head screwdriver, #2 Robertson screwdriver (optional)

Product Usage Instructions

System Overview

The ModiFly wall fixtures can be installed as standalone units or joined together to create continuous runs. Make sure to read all instructions before installation.

Installation Notes

1. Arrange boxed fixtures in specified mounting locations.
2. Remove fixtures from boxes.
3. Install all ceiling mounting components and vertical aircraft cables.
4. Follow local and national building and electric codes.

Module Lengths and Standalone Mounting Points

The ModiFly wall systems come in various module lengths with specific mounting points. Ensure proper positioning based on the fixture length.

Continuous Run

For continuous runs, mount the fixtures similar to standalone lengths. Maintain proper spacing between fixtures as indicated in the manual.

Important Notes

- Avoid handling light guides without wearing clean gloves.
- Disconnect or turn off power before installation, service, or maintenance.
- The fixture must be connected to the building ground before reconnecting to the power supply.

Frequently Asked Questions (FAQ)

- **Q: Can the ModiFly wall fixtures be joined together for continuous lighting?**

A: Yes, the fixtures can be joined together to create continuous lighting runs.

- **Q: What tools are required for installation?**

A: Phillips screwdriver, Flat-head screwdriver, and #2 Robertson screwdriver are recommended tools for installation.

System Overview

These instructions review how to install ModiFly wall fixtures. ModiFly wall 2ft, 4ft, 5ft, 6ft, and 8ft modules can be installed as individual standalone units, or they can be joined together to create continuous runs. The graphic below shows the components required to install a typical run of ModiFly wall fixtures.

IMPORTANT:

Read all instructions including fixture/sensor wiring AND mechanical details before beginning installation.

ModiFly wall hanger assembly

- ModiFly wall bracket (x1)
- ModiFly locking bracket (x1)
- #8-32 x 1/2" screw (x1)
- Snap bushing (x1)
- Strain relief (x1)
- Snap plug (x1)

Note:

2 kits required per luminaire (3 kits required for 5ft, 6ft and 8ft)

ModiFly end assembly*

- ModiFly endcap insert
- #6-32 x 7/16" screw

Note: 2 kits are required for each run (one for each end).

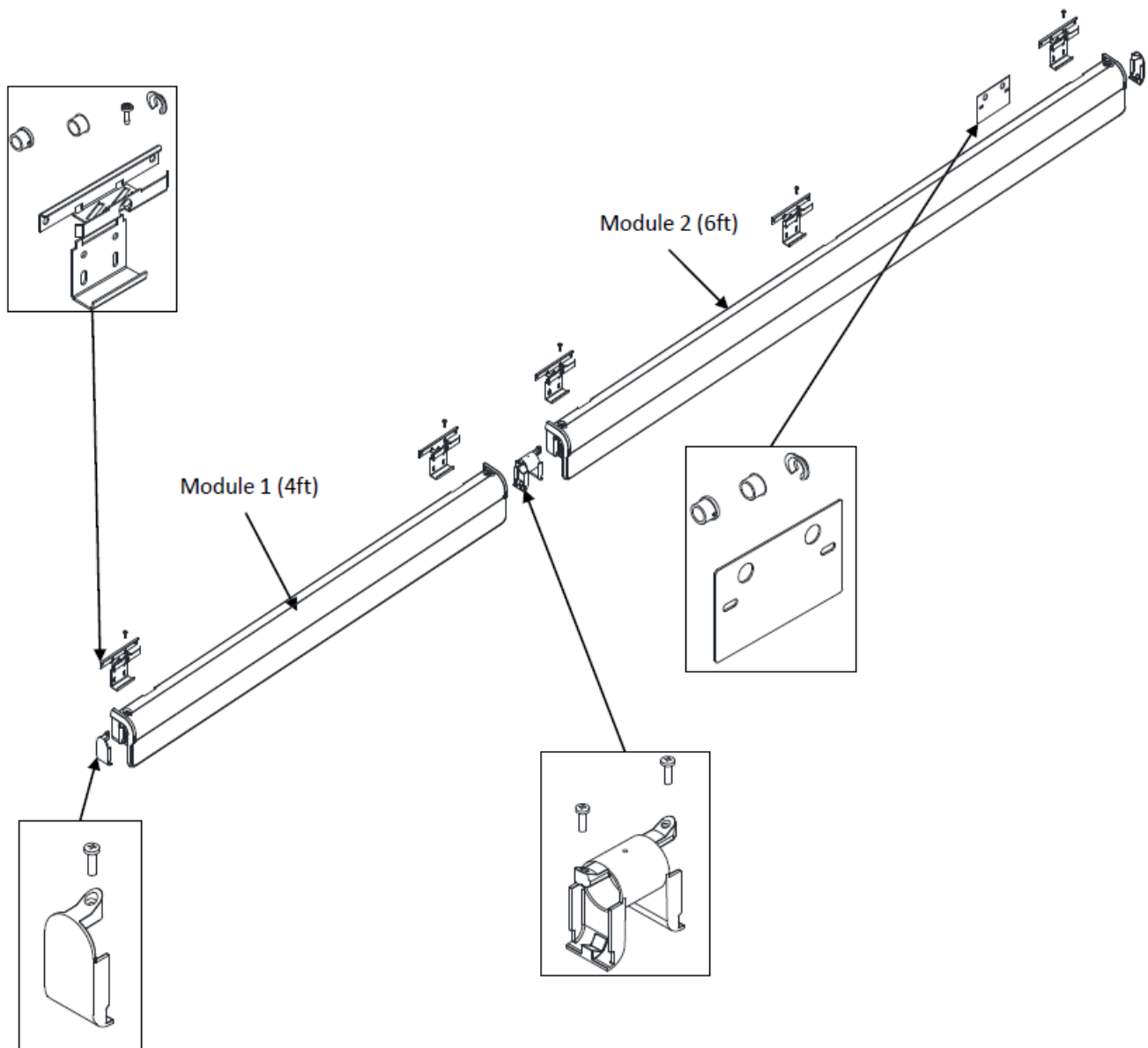
ModiFly power cover assembly

- ModiFly wall cover plate
- Snap bushing (x1)
- Strain relief (x1)
- Snap plug (x1)

ModiFly straight joint assembly

- ModiFly continuous run joint
- #6-32 x 7/16" screw (x2)

Note: 1 kit is required for each in-run joint.



TOOLS REQUIRED:

Phillips screwdriver, Flat-head screwdriver, #2 Robertson screwdriver (optional)

This equipment has been tested and found to comply with the limits for a Class A digital device, under part 15 of the FCC Rules. These limits are designed to provide reasonable protection against harmful interference when the equipment is operated in a commercial environment. This equipment generates, uses, and can radiate radio frequency energy and, if not installed and used by the instruction manual, may cause harmful interference to radio communications. Operation of this equipment in a residential area is likely to cause harmful interference in which case the user will be required to correct the interference at his own expense.

Warning! Shock Hazard!

IMPORTANT:

Disconnect or turn off power before attempting any installation, service or maintenance.

Warning! Shock Hazard!

The fixture must be connected to the building ground via the provided ground wire before re-connecting to the mains power supply.

Installation Notes

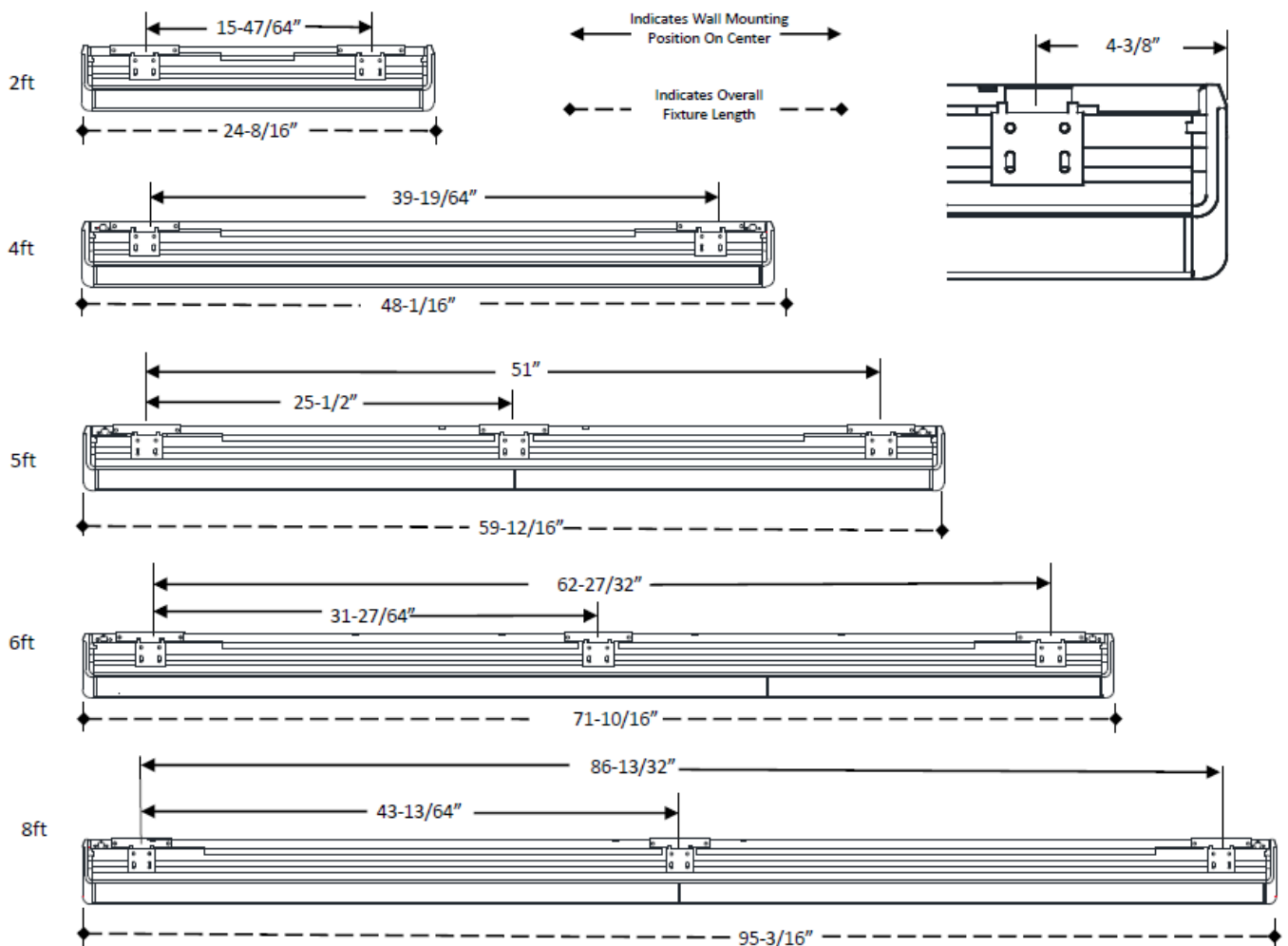
- Arrange boxed fixtures on the floor in specified mounting locations, based on supplied layout drawings.
Remove fixtures from boxes.
- Install all ceiling mounting components and vertical aircraft cables using separate installation instructions for Aircraft Cable Mounting (supplied).

ATTENTION:

Install by local and national building and electric codes.

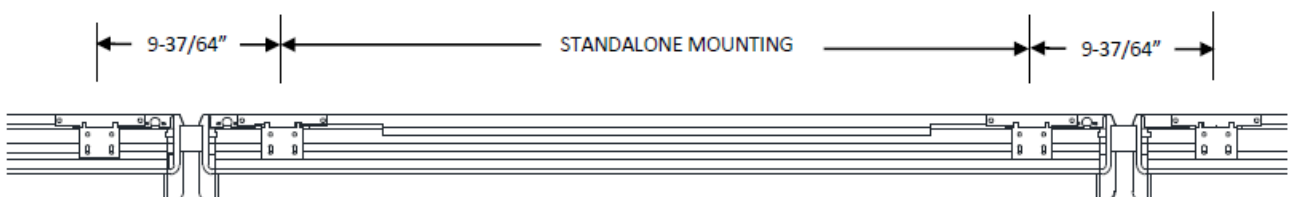
Module Lengths and Standalone Mounting Points

ModiFly wall systems come in 2ft, 4ft, 5ft, 6ft and 8ft modules. Standalone mounting points and overall module lengths are shown below.



Continuous Run

For continuous runs, the fixture is mounted the same as standalone lengths. The space between the straight joint to the next fixture mount bracket in the centre is shown below.



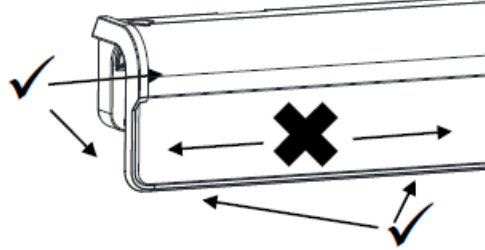
Installation Instruction

1. Prepare fixtures/install mounting components

- Arrange boxed fixtures on the floor in specified mounting locations. Remove fixtures from boxes. Install all wall mounting components (supplied).
- **NOTE:** If conditions are dusty/dirty, the recommended practice is to leave fixtures in their plastic bags until ready to mount.

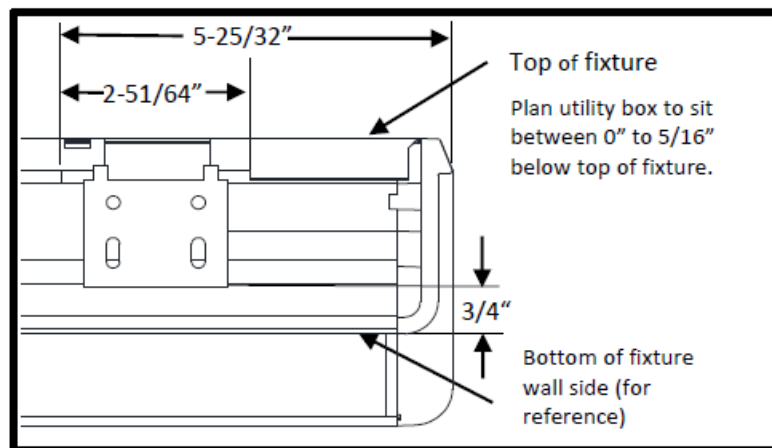
IMPORTANT!

AVOID HANDLING THE LIGHT GUIDES WITHOUT WEARING CLEAN GLOVES.



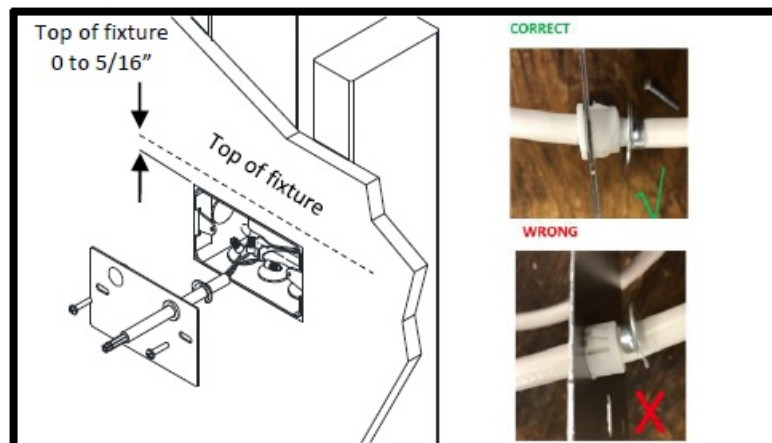
2. Plan wall mount bracket locations

- Determine wall mount bracket location based on the allowable distance from fixture ends to brackets and also factor in site conditions (location of structural members).
- Each 2ft and 4ft fixture requires two brackets and each 5ft, 6ft, and 8ft requires three brackets. Refer to Module Lengths and Standalone Mounting Points.



3. Install utility box and cover plate

- Determine power feed location and install a 2"x4" utility box (supplied by others) parallel with the fixture. Complete electrical connections at the box with the supplied power cord.
- Crimp supplied strain relief onto power cord insulation (recommended Heyco Tool PN0019(R12)). Attach the cover using two screws supplied by others. Plug open the hole with the Heyco plug.

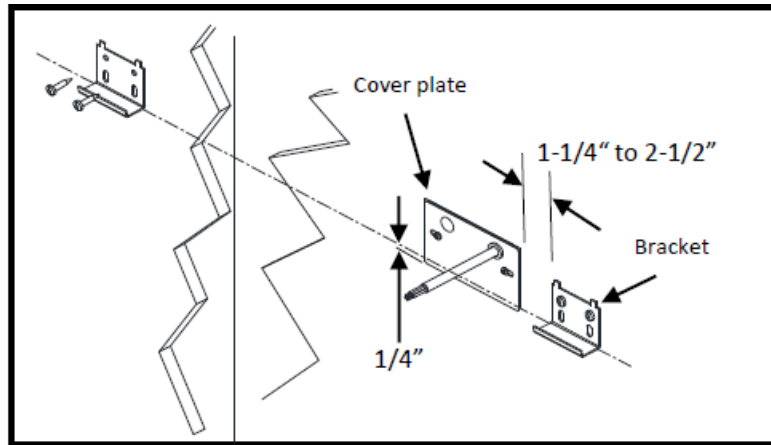


4. Install wall mount brackets

- Install Modifly wall mount brackets to wall structure using appropriate fasteners (BY OTHERS). Note the

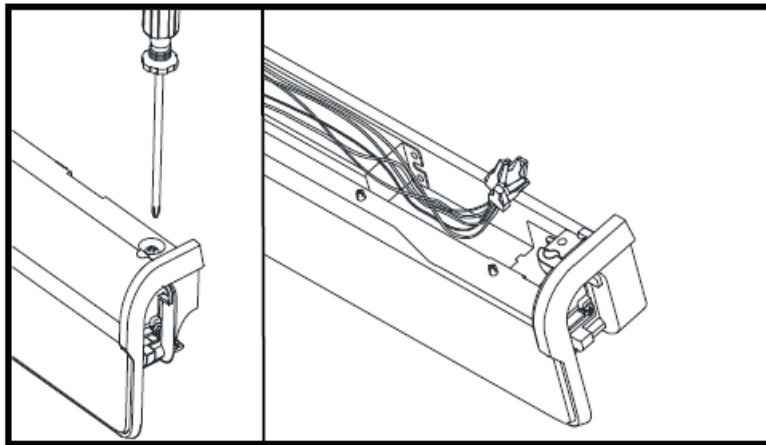
bottom of the installed fixture on the wall side will sit approx. $\frac{3}{4}$ " below the bottom of the bracket. The Bottom edge the of wall bracket ket to be

- located approx. $\frac{1}{4}$ " with the bottom edge of the cover plate.
- Locate the bracket between 1- $\frac{1}{2}$ " to 2- $\frac{3}{4}$ " from the edge of the cover plate.



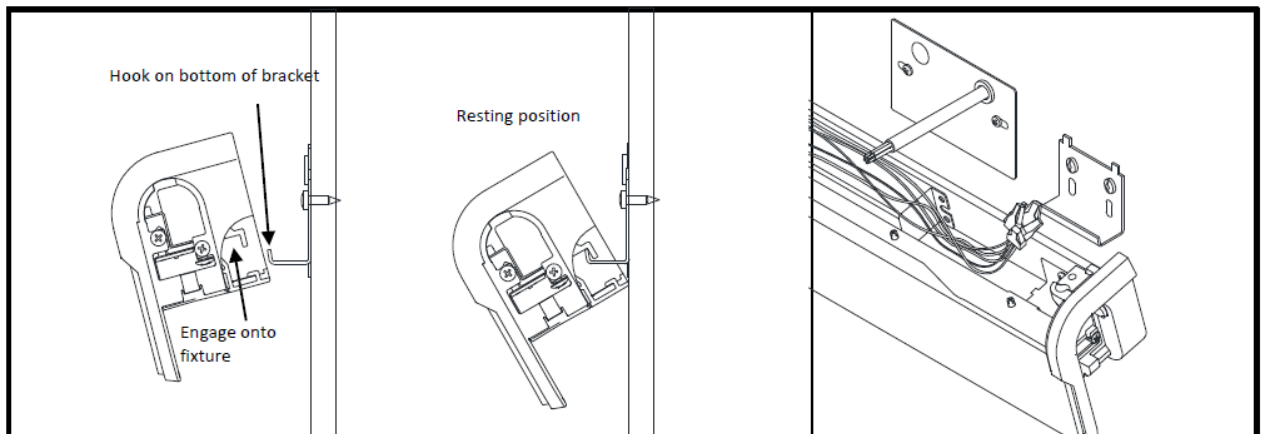
5. Remove top cover

Remove the top cap of the fixture to allow for power access. Two screws to remove with a Phillips screwdriver or Robertson #2. One on each end.



6. Install fixture on wall bracket

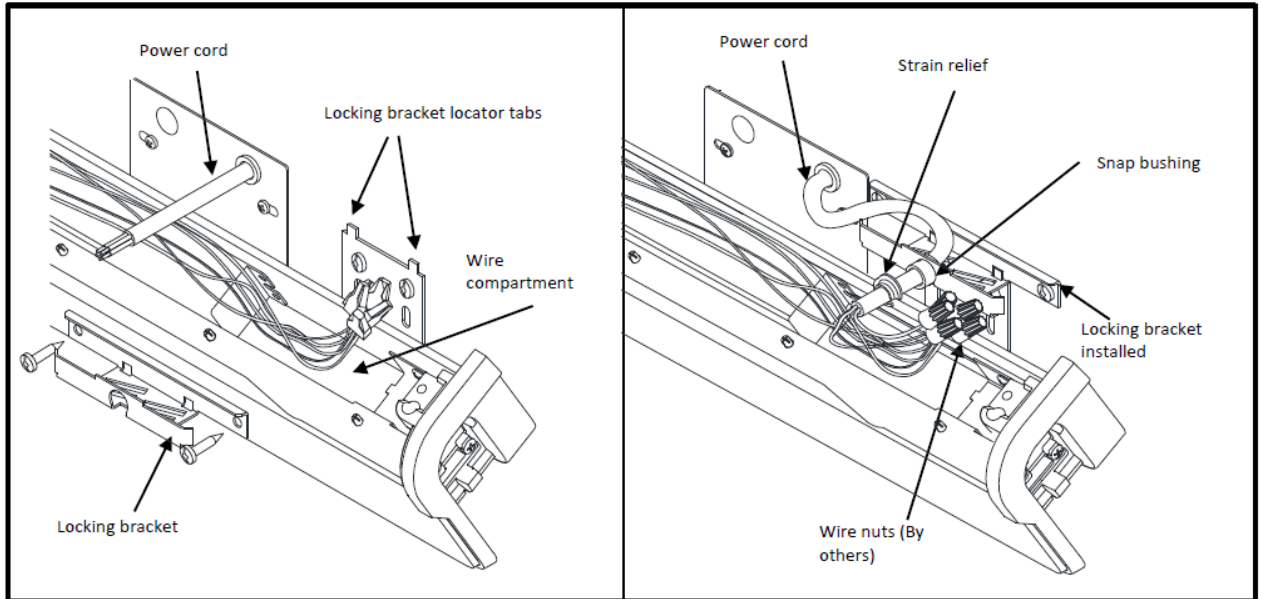
- With two people, raise the fixture into position and engage it on the bracket (hook) located at the bottom of the brackets. Let the fixture rotate down into a resting position.
- **POWER LOCATIONS:** When engaging the fixture on mounting brackets, guide the installed power cord over the fixture so as not to pinch it between the fixture and the wall.



7. Install locking brackets and make power connections

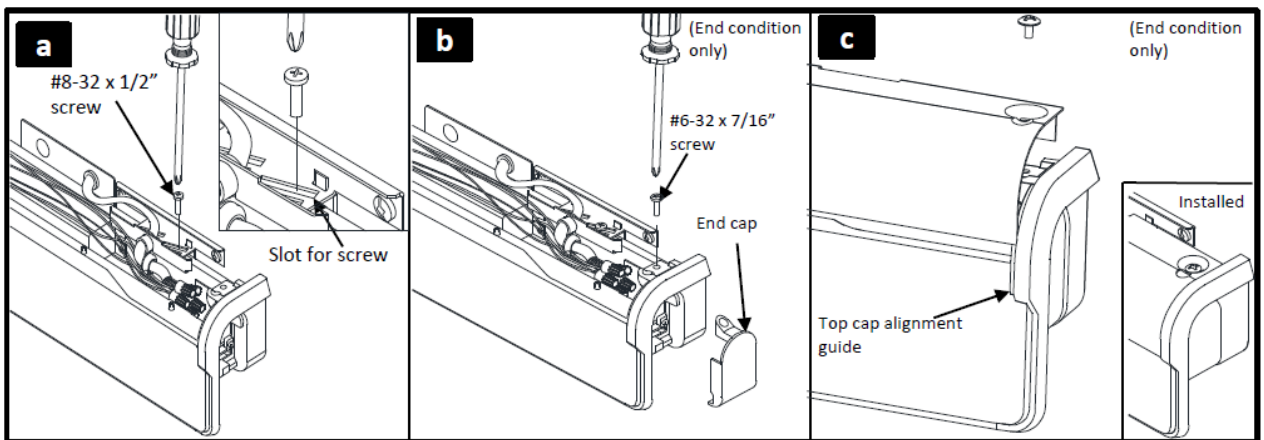
- Install locking bracket to wall structure using appropriate fasteners (BY OTHERS). The locking bracket can be located using the locator tabs on top of the wall bracket.
- Install bushing into the locking bracket and feed the power cord through the locking bracket. Crimp

supplied strain relief onto power cord insulation (recommend Heyco Tool PN0019(R12)). Complete necessary electrical connections (by others) in compliance with local codes. Push the wires and connectors back down into the wire compartment when complete.



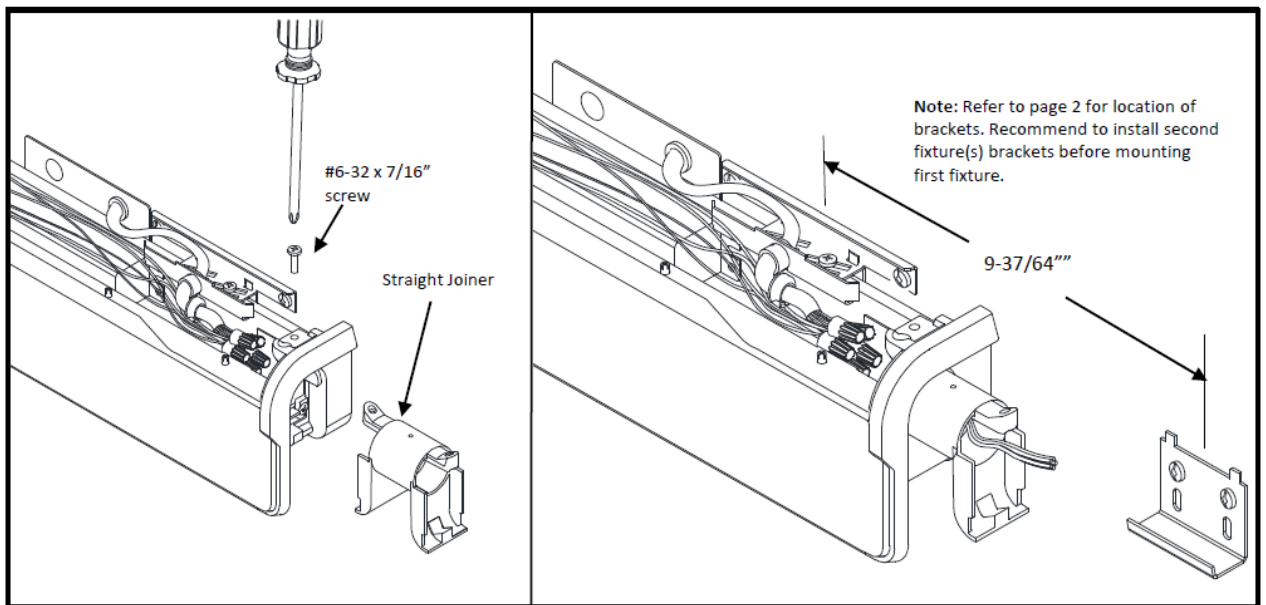
8. Secure fixture with top locking bracket and install top cap

- Level fixture and mount to locking bracket with 8-32 x 1/2" screw with a Phillips screwdriver. Install end cap and secure with #6-32 x 7/16" screw provided in end cap kit with a Phillips screwdriver. Re-install the top cap.
- **IMPORTANT:** Do not over-tighten the endcap and joiner screws. Ledalite recommends tightening by hand.



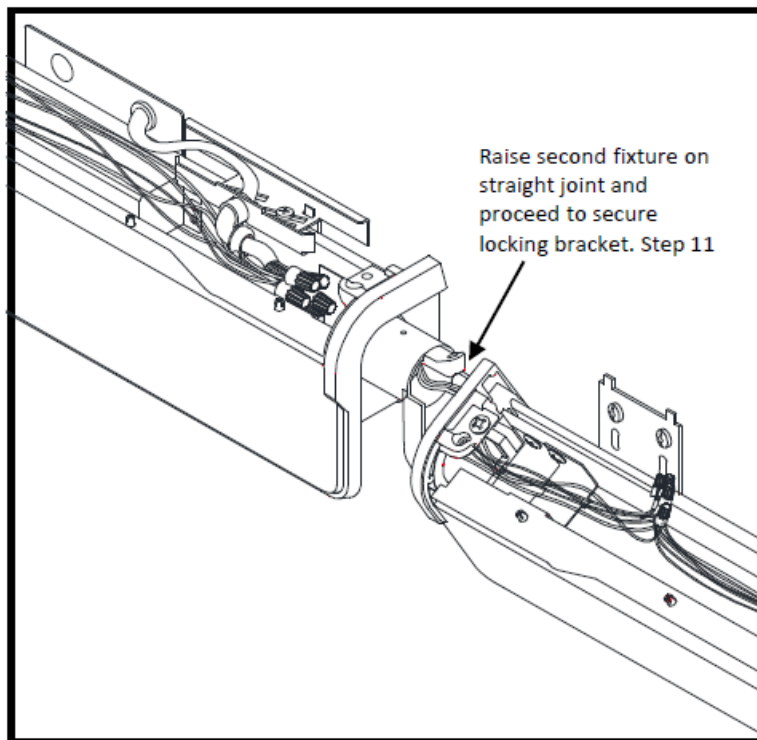
9. Continuous Run

- The continuous run must have a wall bracket installed for adjacent fixtures. Refer to page 2 for the location of brackets.
- Install straight joiner to the installed fixture and secure with #6-32 x 7/16" screw provided with a Philips screwdriver. Refer to step 8b. Once installed feed wires from the mounted fixture through the straight joint. Ensure the continuous run joint is seated properly in the fixture.



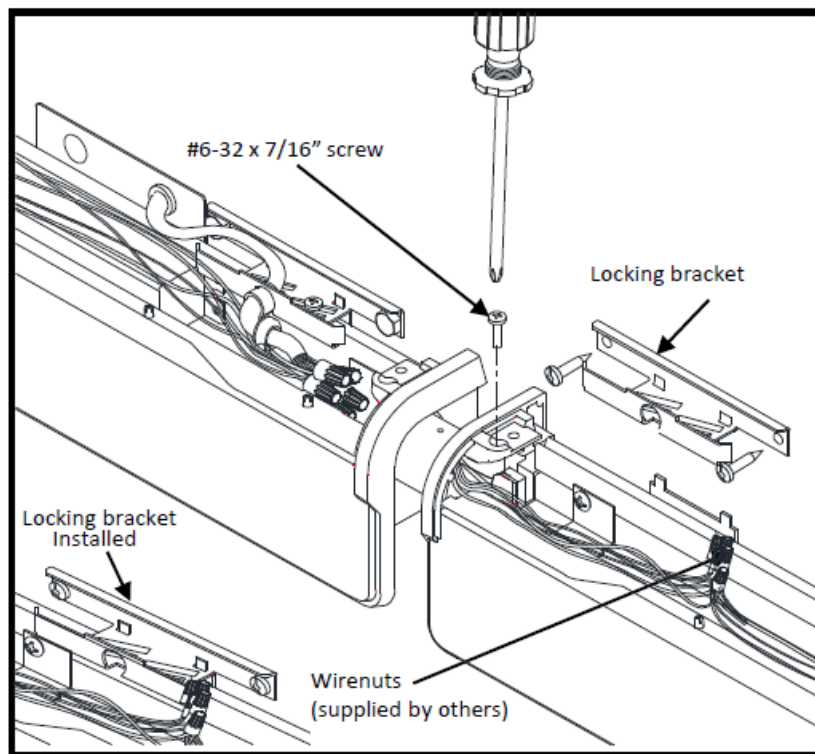
10. Raise fixture on straight joint and Feed wires through

Raise the fixture and feed wires through straight into the second fixture.



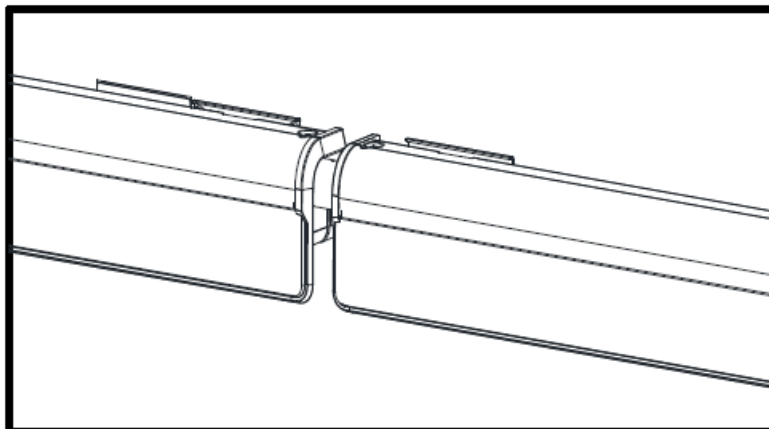
11. Secure fixture on straight joint and install Locking bracket. Complete electrical connections

- Secure fixture to straight joint with provided #6-32 x 7/16" screw. Install the locking bracket, see step 11 for reference.
- Complete necessary electrical connections (by others) in compliance with local codes. Push the wires and connectors back down into the wire compartment when complete.



12. Install top cap(s)

Repeat steps 9 to 11 for the next fixture(s) in the run.



13. Leveling and Cleanup

- Level row by adjustments at the locking bracket.
- Wipe the light guide panel clean if required – ensuring that not introduce scratches.

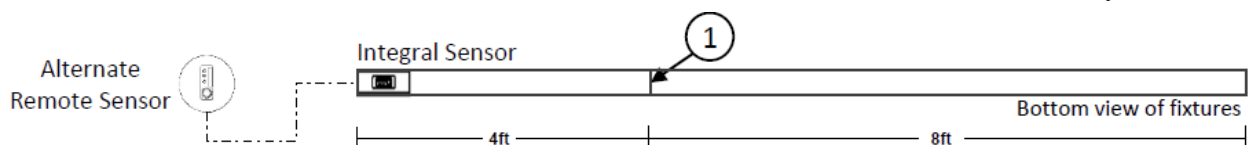
Sensors in Rows

Single Sensor Controlling Whole Row

1. Purple & brown (or purple & grey/pink) control wires MUST be connected between fixtures.

• Note:

A maximum of 8 drivers can be wired to one sensor; confirm fixture driver count with the ctoary.

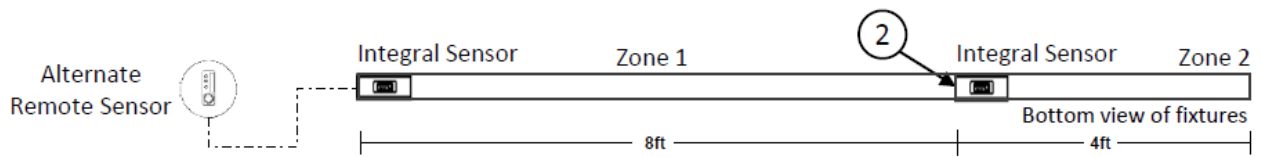


Multiple Sensors Controlling Separate Zones in a Row

2. Purple & brown (or purple & grey/pink) control wires MUST NOT be connected between zones.

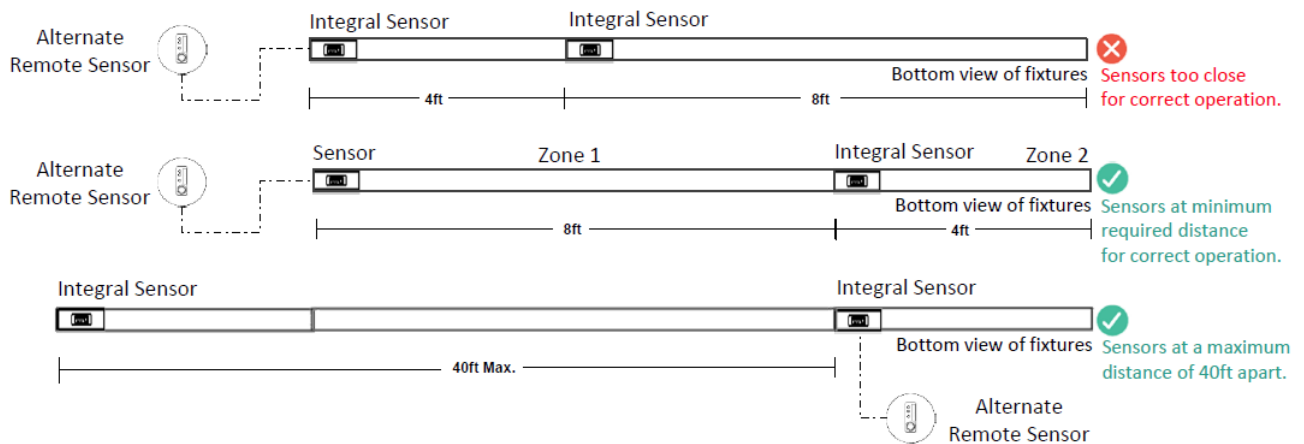
Notes:

- A maximum of 8 drivers can be wired to one sensor; confirm the fixture driver count with the factory.
- Only one sensor is allowed on a wired zone. (Sensors can be paired together wirelessly via a mobile app).



Sensor Spacing

- For correct operation, sensors should be placed a minimum distance of 8ft apart.
- Wireless sensors should be placed no further than 40ft apart for good wireless signal connection.



Important Consideration When Using Sensors in a Row

- **For fixtures with wireless sensors (CS, SB or RA options):**
DO NOT connect fixture purple & brown (or purple & grey/pink) control wires to an external dimming switch. Fixture mains wiring should not be connected to a circuit with an external on/off switch.
- For the best aesthetic condition, place sensors at the ends of the row only so as not to break the continuous lens.
- For better occupancy coverage in longer rows, sensors may be placed mid-run but keep in mind this will break the continuous lens into discrete sections. Alternatively, the remote sensor may be used, note the same wiring rules will apply.

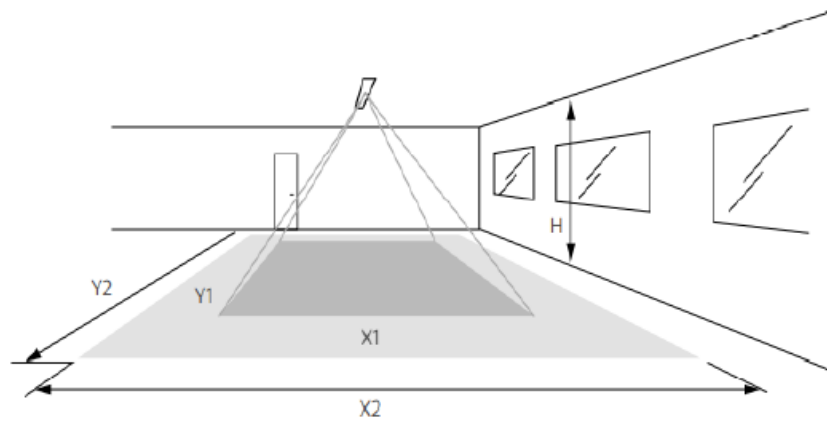
ATTENTION:

Install by national and local building and electrical codes.

Occupancy Sensor Coverage

Note:

The longer dimension of the detection area (Y1, Y2) is parallel to the longer dimension of the luminaire.





Daylight sensor

The light sensor measures the total amount of light in a circular field of approximately 80% of the PIR detection area. The following aspects should be observed during installation:

- Minimum distance from the window $\geq 2\text{ft}$ (0.6m).
- Prevent light reflections from outside entering the sensor (for example sunlight reflection on a car hood) as this will lead to incorrect light regulation.

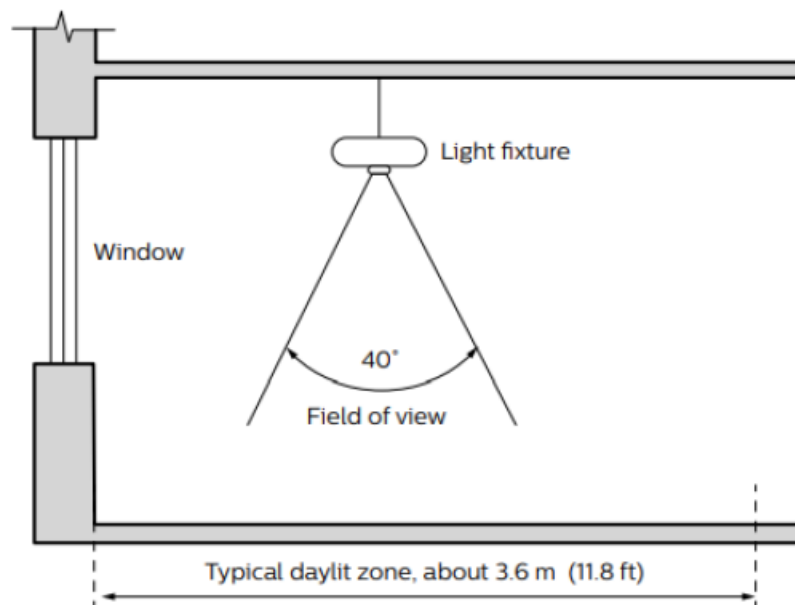
As a guideline, the formula $0.72 \times H$ can be used to calculate the minimum distance between the window and sensor whereby H is the height from the bottom of the window to the sensor.

				
Height	Minor movement		Major movement	
h	X1	Y1	X2	Y2
2.4 m (7.9 ft)	1.9 m (6.2 ft)	2.9 m (9.5 ft)	2.9 m (9.5 ft)	4.3 m (14.1 ft)
3 m (9.8 ft)	2.4 m (7.9 ft)	3.6 m (11.8 ft)	3.6 m (11.8 ft)	5.4 m (17.7 ft)

The detection area for the movement sensor can be roughly divided into two parts:

- Minor movement (a person moving $\leq 3\text{ft/s}$ or 0.9m/s).
- Major movement (a person moving $\geq 3\text{ft/s}$ or 0.9m/s).

Photosensor spatial response

**ATTENTION:**

Install by local and national building and electric codes.

© 2021 Signify Holding. All rights reserved. The information provided herein is subject to change, without notice. Signify does not give any representation or warranty as to the accuracy or completeness of the information included herein and shall not be liable for any action in reliance thereon. The information presented in this document is not intended as any commercial offer and does not form part of any quotation or contract unless otherwise agreed by Signify.

Signify North America Corporation

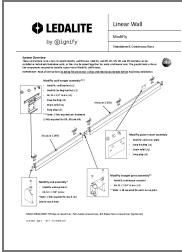
- 400 Crossing Blvd, Suite 600 Bridgewater, NJ 08807
- **Telephone:** [855-486-2216](tel:855-486-2216)

Signify Canada Ltd.

- 281 Hillmount Road, Markham, ON, Canada L6C 2S3
- **Telephone:** [800-668-9008](tel:800-668-9008)

All trademarks are owned by Signify Holding or their respective owners.

- www.signify.com
- www.ledalite.com.



[signify ModiFly Linear Wall](#) [pdf] Instruction Manual
2ft, 4ft, 5ft, 6ft, 8ft, ModiFly Linear Wall, ModiFly, Linear Wall, Wall

References

- [User Manual](#)

[Manuals+](#), [Privacy Policy](#)

This website is an independent publication and is neither affiliated with nor endorsed by any of the trademark owners. The "Bluetooth®" word mark and logos are registered trademarks owned by Bluetooth SIG, Inc. The "Wi-Fi®" word mark and logos are registered trademarks owned by the Wi-Fi Alliance. Any use of these marks on this website does not imply any affiliation with or endorsement.