




SIGNATURE HARDWARE 948975 Single Handle Pressure Balancing Valve Trim in Chrome Instruction Manual

[Home](#) » [Signature Hardware](#) » **SIGNATURE HARDWARE 948975 Single Handle Pressure Balancing Valve Trim in Chrome Instruction Manual** 



SIGNATURE HARDWARE

SIMPLE SELECT

PRESSURE BALANCE VALVE TRIM

SKU: 948975, 948977, 948976, 948974, 948973, 948978

Contents

- [1 BEFORE YOU BEGIN](#)
- [2 GETTING STARTED](#)
- [3 TOOLS AND MATERIALS:](#)
- [4 INSTALLATION](#)
- [5 Documents / Resources](#)
 - [5.1 References](#)

BEFORE YOU BEGIN

We recommend consulting a professional if you are unfamiliar with installing plumbing fixtures. Signature Hardware accepts no liability for any damage to the plumbing, tub, floor, or for personal injury during installation. Observe all local plumbing and building codes.

Unpack and inspect the valve for shipping damage.

If any damage is found, contact our Customer Relations team at 1-855-715-1800.

GETTING STARTED

Ensure that you have gathered all the required materials that are needed for the installation.

TOOLS AND MATERIALS:



Adjustable
Wrench



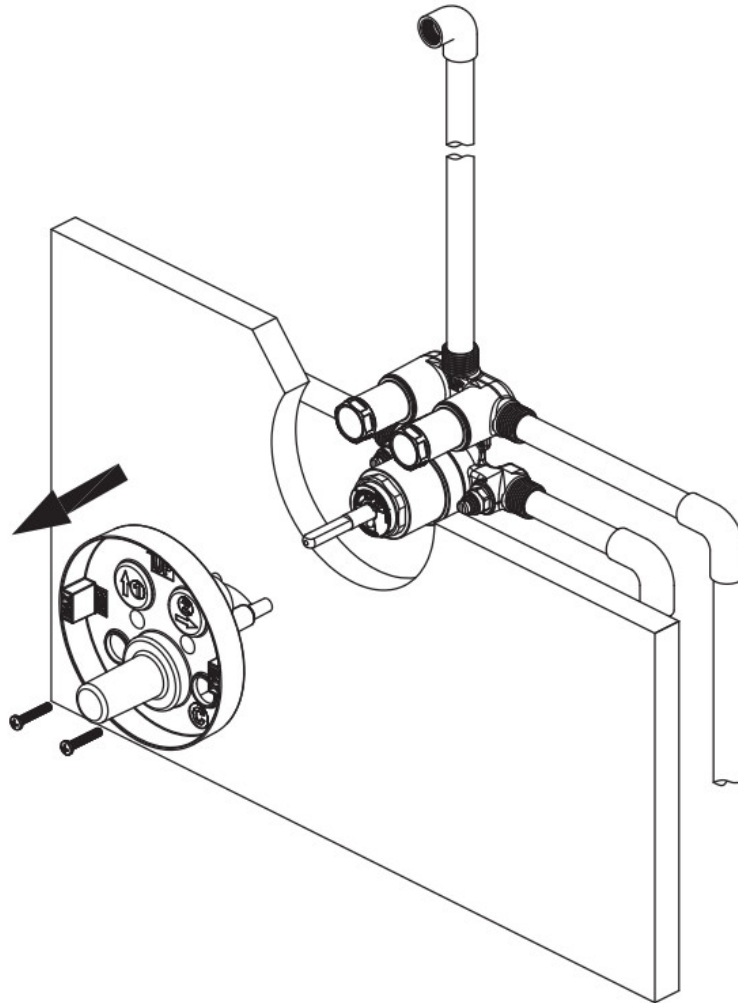
Phillips
Screwdriver



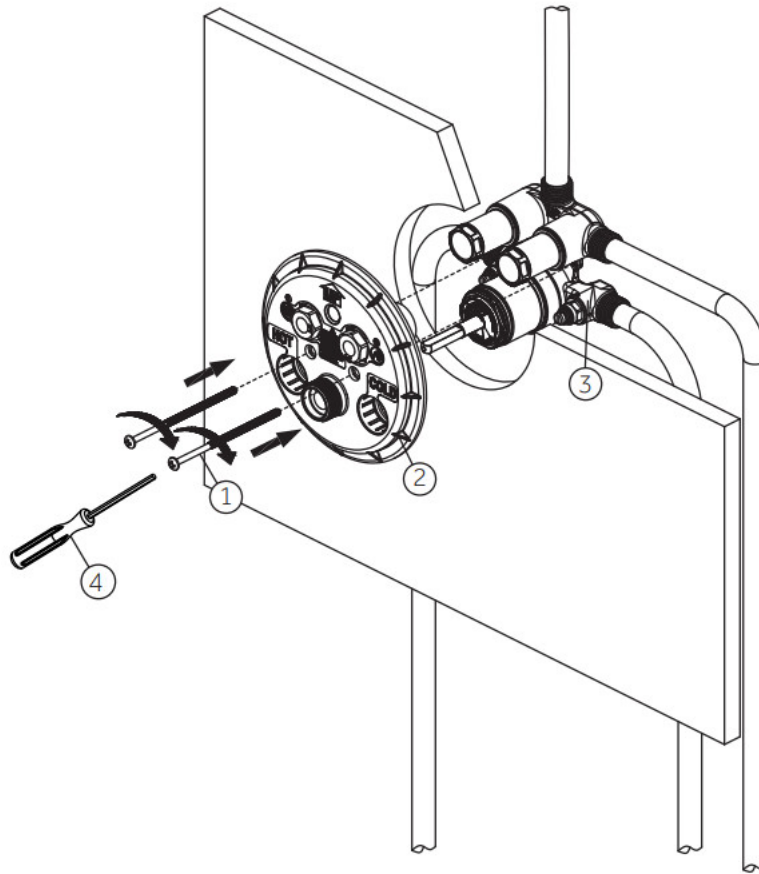
Safety Glasses

INSTALLATION

1. Unscrew the screws and remove the plaster guard.

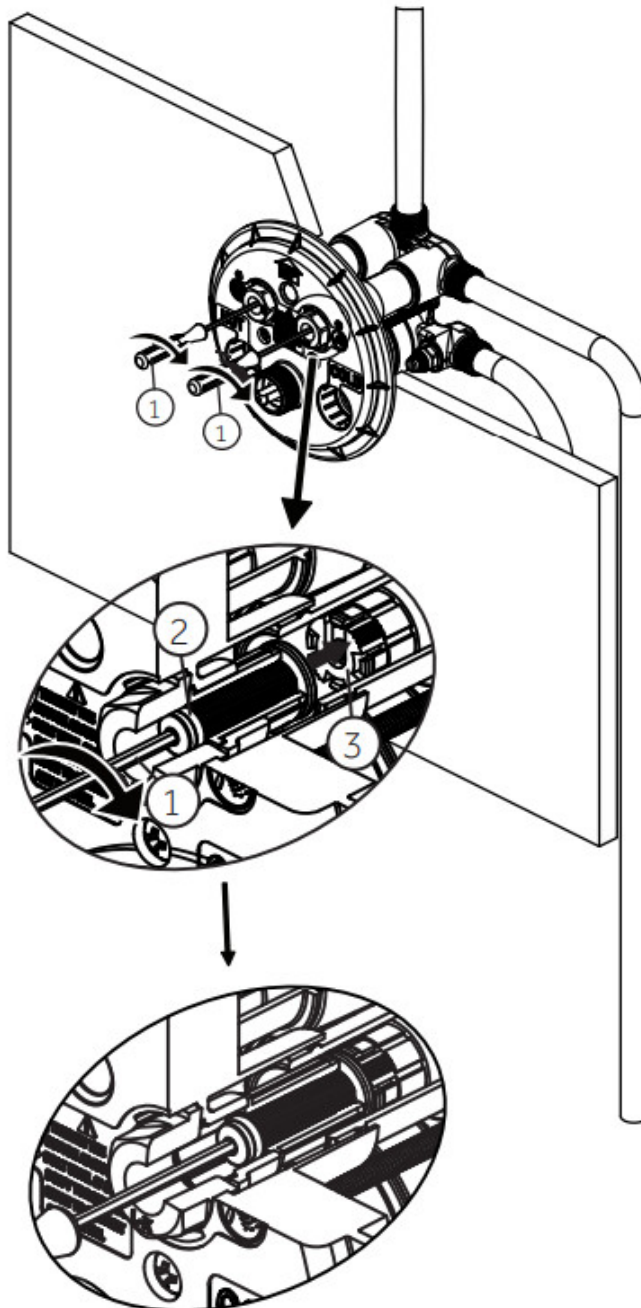


2. Secure backplate (2) to the valve body (3) with the screws (1) using Allen wrench provided.

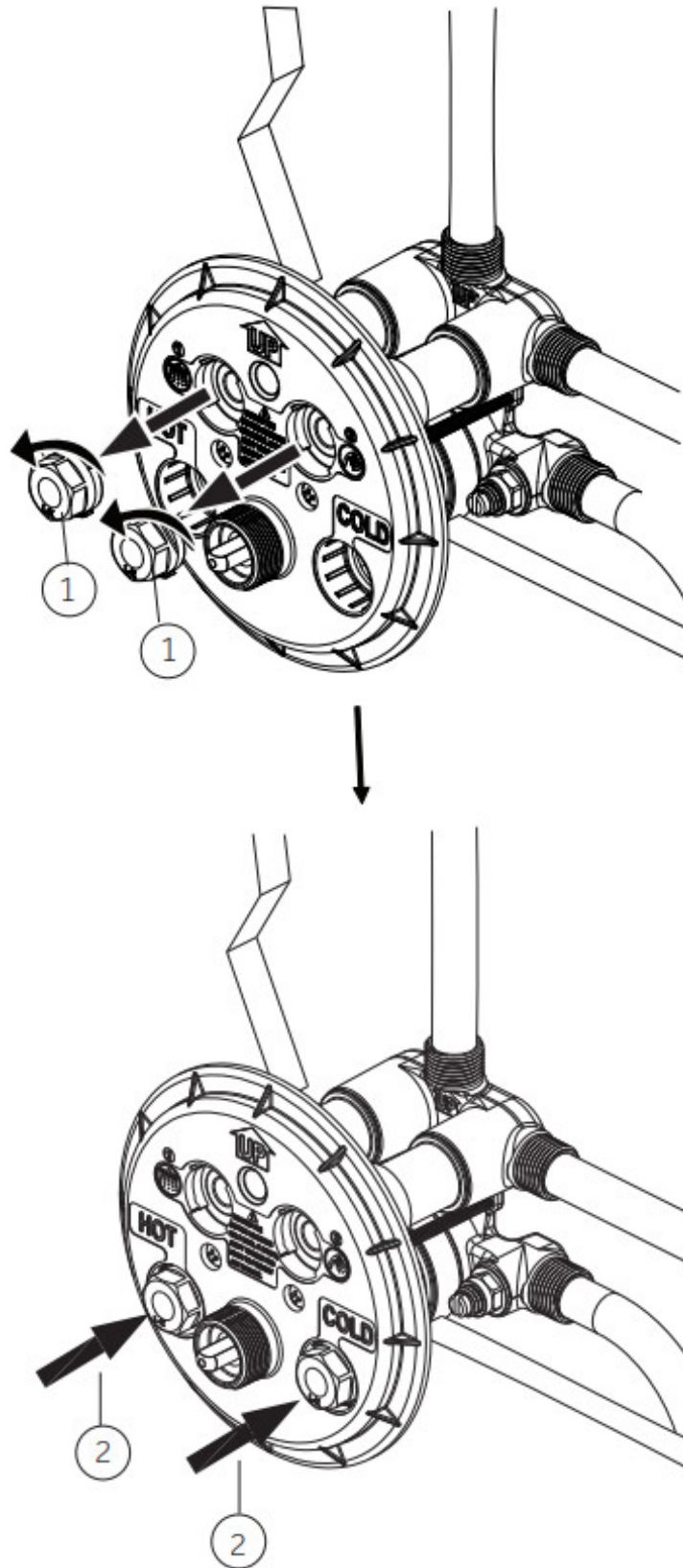


3. With the Allen wrench (1) provided, turn the adjusting bolts (2) clockwise until it connects to the diverter cartridges (3) and compresses to the limit position. Do not torque too much to prevent any damage.

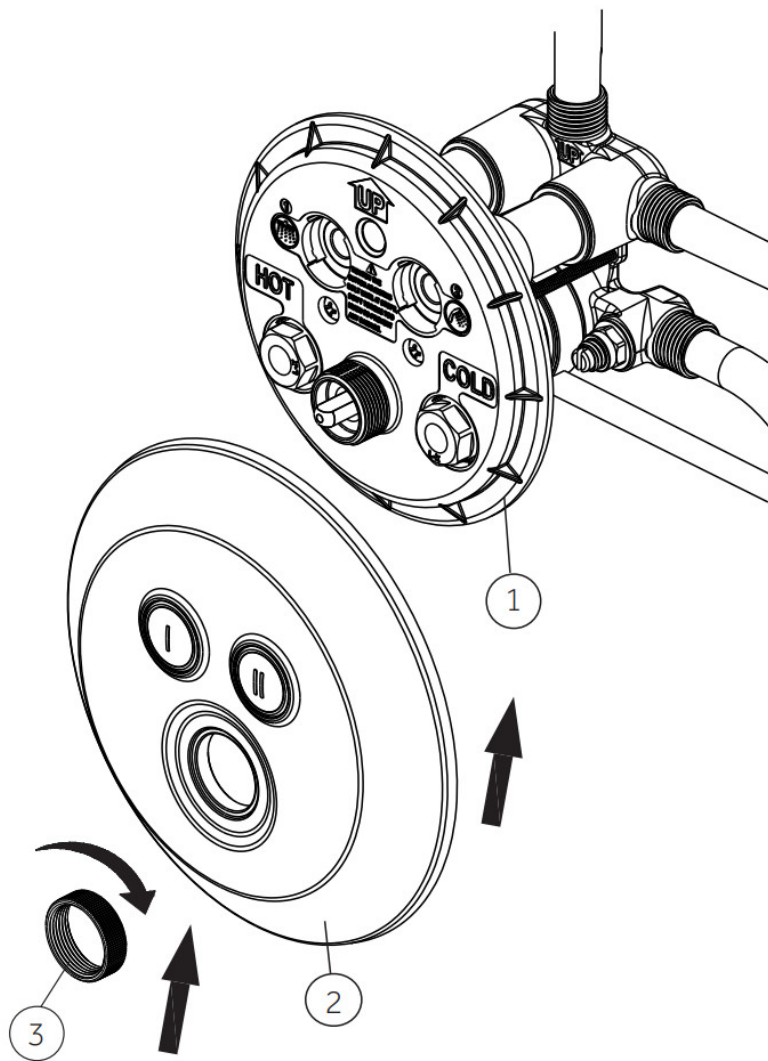
Note: Ensure that the adjusting bolts are tightened correctly to the limit position. Over-tightening may cause improper function of the diverter after installation.



4. Loosen the stop plugs (1) with wrench and place the stop valves (1) onto the holes in the bottom of the backplate.



5. Holding escutcheon (2) in place, tighten mounting nut (3) onto the backplate (1).

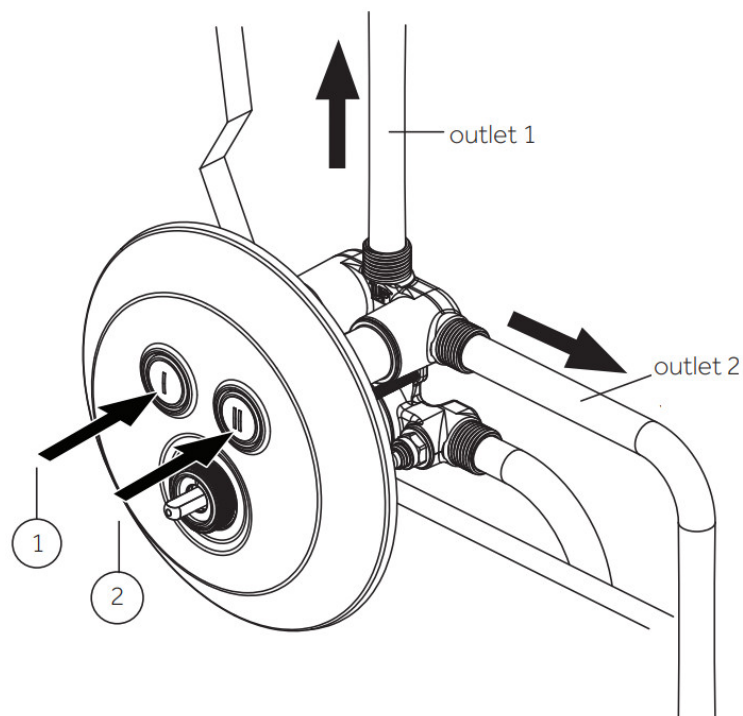


6. Water test:

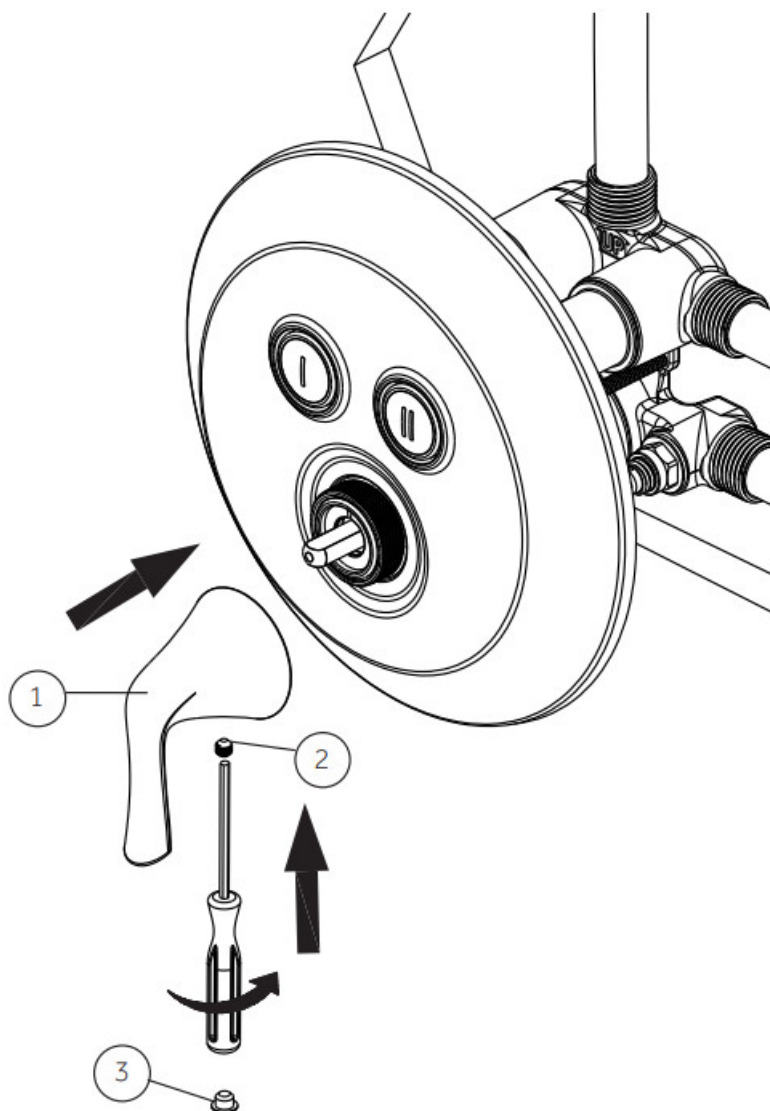
Turn on water lines. Press button 1 and 2 allowing water to flow from outlets. If the issues occur, go back to step 3 and re-install. (Before reinstalling, be sure to turn the adjusting bolts counterclockwise to the minimum position and put the stop plugs in original position.)

Issue a: Button cannot bounce smoothly. (The adjusting bolts in step 3 cannot rotate to the limit position.)

Issue b: There is no flow from outlets or button cannot be switched. (The adjusting bolts in step 3 is too tight.)



7. Install the handle (1) into backplate and secure with set screw (2). Cover with index (3).



ISI SIGNATURE HARDWARE

REVISED 07/07/2021

CODES: SHPR8040, SHVL8040, SHPT8040, SHHB8040, SHGF8040, SHPC8040LH

customer service: 1.855.715.1800

signaturehardware.com

Documents / Resources

<p>SIMPLE SELECT</p> <p>FOR YOUR VALVE TRIM, SELECT THE HANDLE AND INDEX CAP THAT BEST MATCHES YOUR VALVE TRIM. SEE THE LIST OF PARTS FOR MORE INFORMATION.</p> <p>HANDLE</p> <p>1. 948975, 948977, 948976, 948974, 948973, 948978, 948975 Single Handle Pressure Balancing Valve Trim in Chrome, 948975, Single Handle Pressure Balancing Valve Trim in Chrome, Pressure Balancing Valve Trim in Chrome, Balancing Valve Trim in Chrome, Valve Trim in Chrome, Trim in Chrome, Chrome</p> <p>INDEX CAP</p> <p>2. 948975, 948977, 948976, 948974, 948973, 948978, 948975 Single Handle Pressure Balancing Valve Trim in Chrome, 948975, Single Handle Pressure Balancing Valve Trim in Chrome, Pressure Balancing Valve Trim in Chrome, Balancing Valve Trim in Chrome, Valve Trim in Chrome, Trim in Chrome, Chrome</p>	<p><u>SIGNATURE HARDWARE 948975 Single Handle Pressure Balancing Valve Trim in Chrome</u></p> <p><u>e [pdf] Instruction Manual</u></p> <p>948975, 948977, 948976, 948974, 948973, 948978, 948975 Single Handle Pressure Balancing Valve Trim in Chrome, 948975, Single Handle Pressure Balancing Valve Trim in Chrome, Pressure Balancing Valve Trim in Chrome, Balancing Valve Trim in Chrome, Valve Trim in Chrome, Trim in Chrome, Chrome</p>
---	--

References

- [User Manual](#)

Manuals+.