



SIGMA 01050 ROX 2.0 Cycle Navigation Computer Owner's Manual

[Home](#) » [SIGMA](#) » SIGMA 01050 ROX 2.0 Cycle Navigation Computer Owner's Manual 

SIGMA 01050 ROX 2.0 Cycle Navigation Computer

SIGMA



15:30

87m



▲ 23.5



18.67 km

ROX

Contents

- 1 REMARKS
- 2 CONTENTS
- 3 INSTALLATION
- 4 BUTTON FUNCTIONS
- 5 FIRST START
- 6 TRAINING
- 7 MENU OVERVIEW
 - 7.1 MAIN MENU
 - 7.2 SHORT CUT MENU
- 8 SETTINGS
- 9 E-BIKE CONNECTION
- 10 SIGMA RIDE APP
- 11 CHARGING AND DATA TRANSFER
- 12 TECHNICAL INFORMATION
- 13 Documents / Resources
 - 13.1 References
- 14 Related Posts

REMARKS

This manual is a quick guide.
You can access the detailed instructions by following this link:



goto.sigmasport.com/rox2-0

CONTENTS

ROX 2.0



Art.-Nr. 081050
Art.-Nr. 080466



Art.-Nr. 090164
Art.-Nr. 090165
Art.-Nr. 190007



Art.-Nr. 090709



TOP MOUNT SET



Art.-Nr. 081050
Art.-Nr. 080466



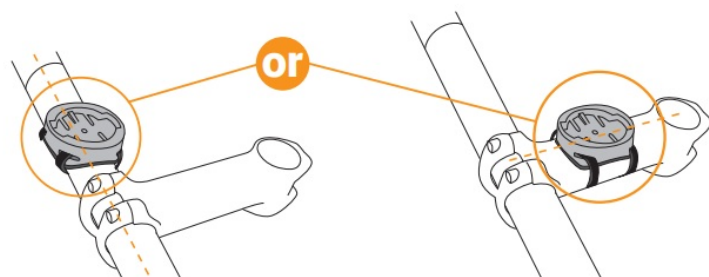
Art.-Nr. 010500
Art.-Nr. 090142



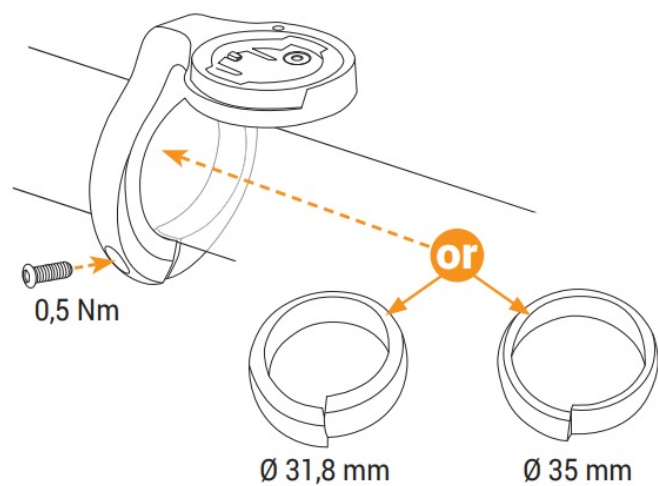
Art.-Nr. 090709



INSTALLATION



Available in set or sold separately!



BUTTON FUNCTIONS



❶ START/STOP/MENU Button

- Start training
- Stop training
- Confirm input
- One menu level down
- Switch on the device (press for 3s)

Press and hold button:

- Open and close menu

❷ PLUS Button

- One page forward
- Increase value

Press and hold button:

- Save and reset training values



FIRST START



- 1 Press **START** Button for 5s to Wake-Up.
- 2 Choose **YES** to pair a Smartphone, choose **NO** to manually set the device.

- 3 Download SIGMA RIDE App and follow App instructions to configure your device.
- 4 **OR** set device and user settings manually.
- 5 Enjoy your device and start your first ride!

<div style="background-color: black; color: white; padding: 10px; text-align: center; margin-bottom: 10px;"> <p>GET IT ON Google Play</p> </div> <div style="background-color: black; color: white; padding: 10px; text-align: center;"> <p>Download on the App Store</p> </div>	<div style="text-align: center;"> <p style="font-size: 2em; font-weight: bold; margin: 0;">TIP</p> <p style="font-weight: bold; margin: 0;">SIGMA RIDE App</p> </div>
<p>The app offers you many functions for setting up and customising the ROX 2.0. For more information on the app functions, see the „SIGMA RIDE app“ page.</p>	

TRAINING

- 1 Press **START** button for 3s to start the device.
- 2 Don't move and search for clear sky location for fast GPS fix.
- 3 Wait for „GPS OK“. Press **START** button to start the training session.
- 4 Press **START** button to stop the training session.
- 5 Hold „+“ button to reset training values and save your training.
- 6 Sync with Smartphone for full data analysis and sharing.



MENU OVERVIEW

MAIN MENU

- 1 Hold **START** button, when training is **NOT** started.
- 2 You have access to the main menu with all the functions of the ROX 2.0.

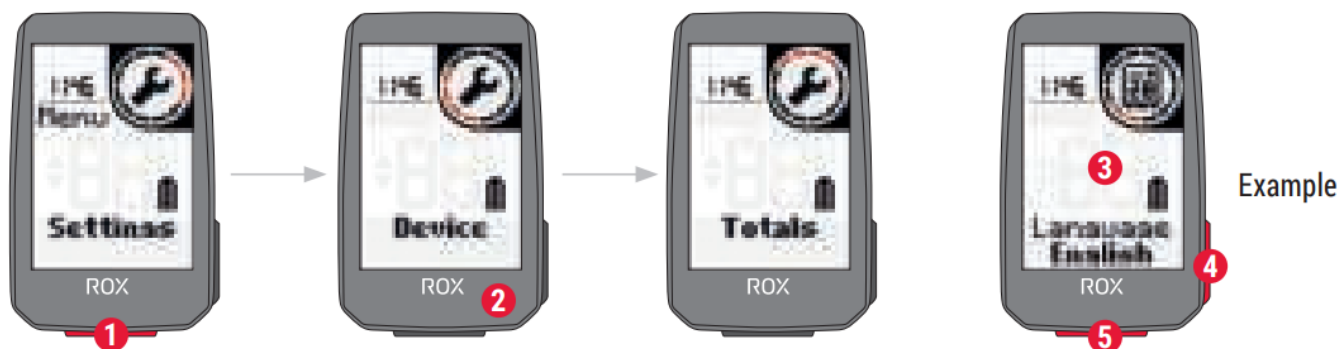


SHORT CUT MENU

- ① Hold **START** button, when training is **active or in auto pause**.
- ② You can edit the most important settings during training.

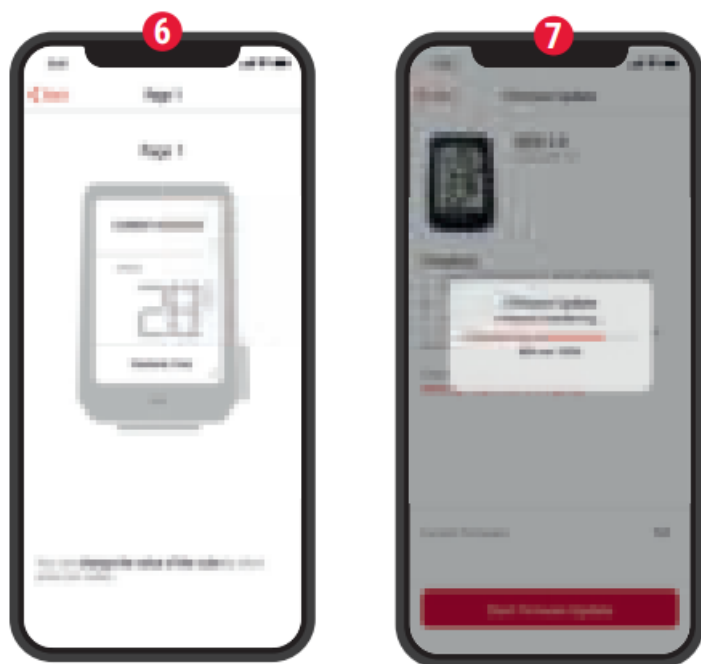


SETTINGS



- ① Choose **Settings** in main menu to set the device.
- ② You can edit Device settings and Totals.
- ③ Choose a setting you want to edit and press **START** button to set.
- ④ Press “+” button to increase a value or to toggle through options.
- ⑤ Press **START** button to confirm the settings
- ⑥ Use the App to set your training views.

- ⑦ Use the App or SIGMA DATA CENTER to update your firmware.



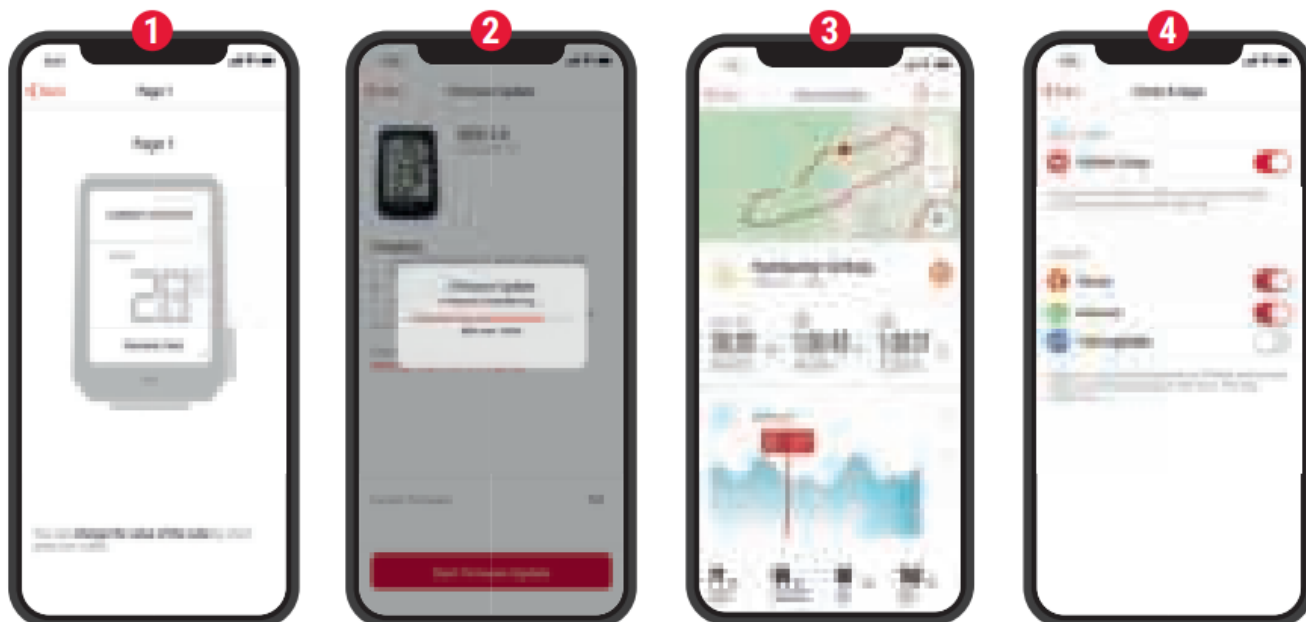
SIGMA RIDE App

E-BIKE CONNECTION



- ① Choose **Main Menu > Connection > E-Bike** to pair a new E-Bike or manage paired Bike.
② Make sure that E-Bike is switched on!
③ Press **START** button to pair E-Bike.

SIGMA RIDE APP



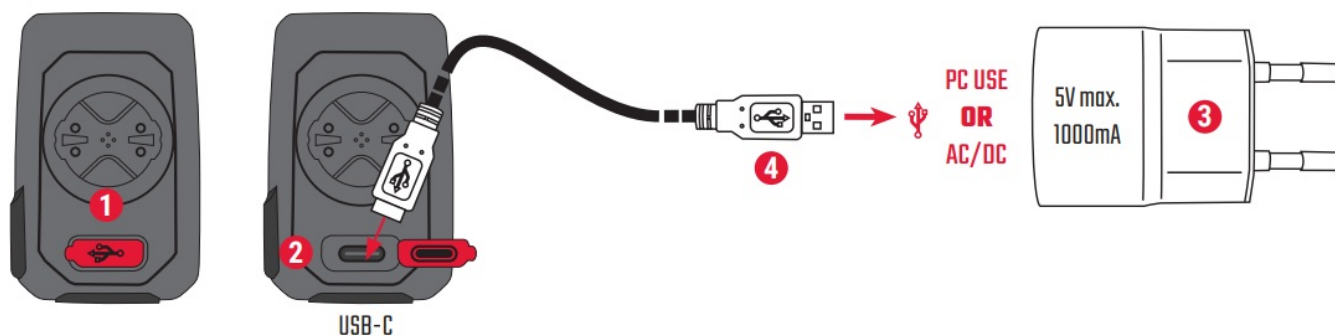
- ❶ Set Device and Training Views
- ❷ Firmware Update
- ❸ Analyze your training
- ❹ Share your data and many more...



TIP

: Check for Firmware Updates regularly.
To access the changelog, follow this link:

CHARGING AND DATA TRANSFER



- ❶ Open USB Cover.
- ❷ Insert USB-C cable.
Check that the cable and port are dry!
- ❸ Charge with 5V max. 1000mA.
- ❹ Connect to PC for data transfer.

! **IMPORTANT:** Please ensure that the USB cover is always closed before starting a training session.

TECHNICAL INFORMATION


ROX 2.0	
Battery type	Rechargeable 350 mAh, 3.7 V Battery
Operation temperature	0 °C to 60 °C
Operation frequency	ANT+ 2.4 GHz @ 1 dBm nominal Bluetooth 2.4 GHz @ 1 dBm nominal GPS 1575.42 MHz (receiver only) GLONASS 1602 MHz (receiver only)
Transmission power	<4 dBm
Water and Dust rating	IPX7

! You can find the CE declaration at: ce.sigmasport.com/rox20

Dr.-Julius-Leber-Straße 15
67433 Neustadt/Weinstraße
Germany
kundenservice@sigmasport.com

www.sigmasport.com

Documents / Resources

	<p>SIGMA 01050 ROX 2.0 Cycle Navigation Computer [pdf] Owner's Manual 01050, ROX 2.0 Cycle Navigation Computer, ROX 2.0, Cycle Computer, 01050, Navigation Computer</p>
---	---

References

- ce.sigmasport.com/rox20
- goto.sigmasport.com/
- [ROX 2.0 SIGMA SPORT](#)
- [E-BIKE COMPATIBILITY SIGMA SPORT](#)
- [ROX 2.0 SIGMA SPORT](#)
- [SIGMA SPORT - Bike Computer, Bike Lights, Data World](#)