



Contents [[hide](#)]

- [1 Sigalux BR30 Dimmable LED Flood Light](#)
- [2 INTRODUCTION](#)
- [3 SPECIFICATIONS](#)
- [4 WHAT'S IN THE BOX](#)
- [5 FEATURES](#)
- [6 SETUP GUIDE](#)
- [7 CARE & MAINTENANCE](#)
- [8 TROUBLESHOOTING](#)
- [9 PROS & CONS](#)
- [10 WARRANTY](#)
- [11 FREQUENTLY ASKED QUESTIONS](#)
- [12 References](#)



Sigalux BR30 Dimmable LED Flood Light



INTRODUCTION

The warm 2700K soft-white light produced by the 650 lm Sigalux Dimmable LED Flood Lights—BR30, 6-Pack is ideal for warm interior settings like dining rooms, living rooms, and bedrooms. These E26-base bulbs, which cost about \$1.08 a year per bulb (at 3 hours per day and \$0.11/kWh), offer up to 80% energy savings over conventional 65-W incandescent BR30s while using just 65-W LED power. Each bulb, which costs **\$14.74**, has a wide 110° beam angle, flicker-free operation, 80 CRI for natural colors, and smooth dimming from 100% to 10%. UL-listed and rated for up to 12,000 hours (about 10 years of typical use), they are dependable, environmentally friendly, and simple to install. Not accessible in California, please note.

SPECIFICATIONS

Brand	Sigalux
Light Type	LED
Wattage	65W LED (replacement for 65W BR30)
Brightness	650lumens

Color Temperature	2700K (Soft White)
CRI	≥80
Beam Angle	110°
Dimmable	Yes (100% → 10%)
Base	E26
Shape	BR30
Voltage	120V (100–240V, 60Hz)
Lifespan	~12,000hours (~10years)
Certifications	UL Listed
Pack Count	6 bulbs
Usage	Indoor
Material	Synthetic PMMA
Price	\$14.74 (≈\$2.46 per bulb)

WHAT'S IN THE BOX

- 6 × Sigalux BR30 65W equivalent dimmable LED bulbs
- Manual

FEATURES

- **Wattage Replacement:** Uses only 65W of LED power to replace traditional 65W BR30 bulbs.
- **Brightness Level:** Delivers 650 lumens of soft, pleasant light.



SOFT, COMFORTABLE LIGHT

Perfect for family rooms, bedrooms & dining rooms

- **Color Temperature:** Emits a warm 2700K glow that mimics traditional soft white lighting.
- **Color Accuracy:** Provides a CRI of 80 or higher for vibrant, true-to-life colors.
- **Beam Angle:** Offers a wide 110° spread, ideal for general room lighting.
- **Dimmable Range:** Smoothly dims from 100% brightness down to 10% without disruption.
- **Light Quality:** Flicker-free for a comfortable and stable lighting experience.
- **Energy Efficiency:** Saves up to 80% on energy use compared to incandescent bulbs.
- **Bulb Lifespan:** Operates for up to 12,000 hours, lasting roughly 10 years with average use.
- **Socket Type:** Designed with a universal E26 medium base for wide compatibility.
- **Safety Rating:** UL-listed for indoor use, ensuring peace of mind.
- **Build Material:** Crafted with lightweight synthetic PMMA housing for durability.
- **Dimmer Compatibility:** Works with most modern LED-compatible dimmer switches.
- **Light Ambiance:** Delivers a silent and cozy lighting environment—no humming or buzzing.
- **Cost-Effectiveness:** Great value at just \$2.46 per bulb in multi-packs.

Friendly to the Environment
& Your Wallet



Only **\$1.08** energy cost per year

Replace less often than incandescent

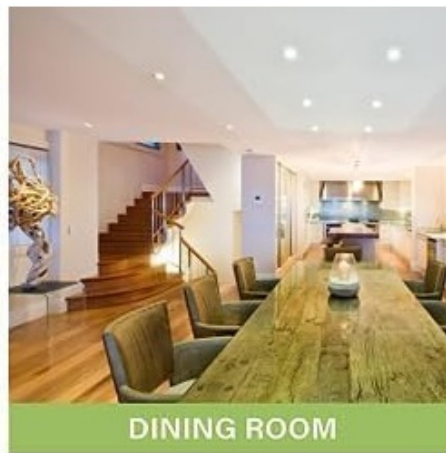


SETUP GUIDE

- **Power Safety:** Turn off electricity at the switch or breaker before beginning.
- **Cooling Time:** Let the existing bulb cool down completely before handling.
- **Old Bulb Removal:** Unscrew the current BR30 bulb counter-clockwise to remove it.
- **New Bulb Installation:** Screw the new Sigalux LED bulb in securely by hand.
- **Power Test:** Turn the power back on and check the light's functionality.
- **Dimming Check:** Adjust the dimmer from high to low to test its range.
- **Flicker Troubleshooting:** If flickering occurs, verify dimmer compatibility with LEDs.
- **Fixture Advice:** Avoid fully enclosed fixtures to help the bulb last longer.
- **Handling Care:** Hold the bulb by its base—don't touch the glass portion.
- **Lighting Layout:** Place bulbs evenly for balanced brightness in the room.
- **Cleaning Tip:** Gently wipe the bulb with a dry cloth after installation.
- **Packaging Storage:** Save the original box in case of warranty or returns.
- **Disposal Method:** Follow local rules to dispose of old bulbs responsibly.
- **Spare Bulb Storage:** Keep extra bulbs in a dry, cool area away from humidity.



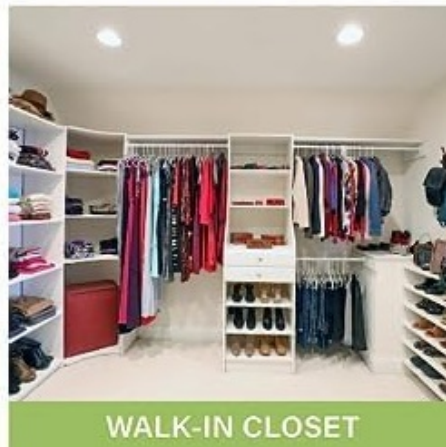
LIVING ROOM



DINING ROOM



BEDROOM



WALK-IN CLOSET

CARE & MAINTENANCE

- **Power Down:** Always switch off the power before touching or cleaning the bulb.
- **Cleaning Method:** Use a dry, soft cloth to gently remove dust from the surface.
- **Avoid Liquids:** Never apply water or cleaning chemicals to the bulb.
- **Socket Inspection:** Check annually for signs of corrosion or wear in the socket.
- **Fixture Load:** Ensure the fixture isn't over its rated wattage capacity.
- **Ventilation Check:** Make sure fixtures have airflow to avoid overheating.
- **Switch Usage:** Reduce frequent switching on and off to extend bulb life.
- **Performance Warning:** Replace bulbs that begin flickering or dimming noticeably.
- **Storage Tip:** Keep backup bulbs in original packaging in a stable environment.
- **Installation Note:** Don't touch the bulb glass directly during installation.
- **Dust Prevention:** Clean surrounding fixtures to help maintain consistent lighting.
- **Surge Protection:** Use surge protectors for better long-term bulb performance.
- **Dimmer Upgrades:** Update to modern dimmers if flickering persists.
- **Indoor Use Only:** Designed specifically for dry, indoor settings.
- **Usage Monitoring:** Keep track of runtime to know when replacements might be needed.

TROUBLESHOOTING

Issue	Possible Cause	Solution
No light	Loose bulb or no power	Tighten bulb; check power supply
Flickering	Dimming incompatibility	Switch to LED-compatible dimmer
Buzzing	Dimmer mismatch	Use quiet-rated LED dimmer
Can't dim fully	Non-LED dimmer used	Install LED-friendly dimmer
Too bright at low dims	Dimmer low-end voltage issue	Adjust dimmer setting or replace dimmer
Overheating	Enclosed fixture used	Move to ventilated fixture
Bulb failure early	Voltage fluctuations	Use surge protector, contact warranty
Discoloration	Fixture heat	Check heat rating and replace accordingly
Uneven brightness	Mixed bulb types	Use identical bulbs throughout the fixture
Loose fit	Faulty socket or base	Inspect socket; ensure correct E26 fit

PROS & CONS

Pros

- Up to 80% energy savings
- Even, warm soft-white light (2700K)
- Smooth, flicker-free dimming
- Long 12,000h lifespan
- Low cost per bulb

Cons

- Indoor use only
- Not available in California
- May require compatible dimmer switch
- Limited to E26 fixtures
- No extras like diffusers or storage case

WARRANTY

Comes with a **3-year limited manufacturer warranty** covering defects and performance issues, starting from the date of purchase.

FREQUENTLY ASKED QUESTIONS

What wattage does the Sigalux BR30 Dimmable LED Flood Light use, and how much energy does it save?

The Sigalux BR30 LED uses only a fraction of 65 watts, yet it replaces a traditional 65W incandescent bulb. It can save up to 80 percent on energy bills, costing around \$1.08 per year with average usage.

What color temperature does the Sigalux BR30 Bulb provide, and how does it affect room ambiance?

This model emits a 2700K soft white light, which delivers a warm and cozy glow ideal for bedrooms, dining areas, and living rooms.

What is the brightness level of the Sigalux BR30 Dimmable LED Light?

The bulb offers 650 lumens of brightness, sufficient for general ceiling lighting in residential rooms.

What is the beam angle of the Sigalux BR30 LED Flood Light?

It has a 110 degree wide beam angle, which spreads light over larger areas, making it perfect for ceiling fixtures.

How long does the Sigalux BR30 Dimmable Bulb last?

With a 12,000-hour lifespan, the bulb is designed to last up to 11 years based on 3 hours of daily use ideal for hard-to-reach fixtures.

What kind of base does the Sigalux BR30 LED Bulb use?

This bulb features a standard E26 base, making it compatible with most common light sockets in the U.S.

Why is my Sigalux BR30 LED Flood Light flickering?

Flickering could be caused by an incompatible or low-quality dimmer switch. Ensure you're using a dimmer rated for LED bulbs.

References

- [User Manual](#)

🔍 B0CCSG7HMG, BR30, Dimmable LED Flood Light, Sigalux, Sigalux BR30, user

📁 Sigalux manual

Leave a comment

Your email address will not be published. Required fields are marked *

Comment *

Name

Email

Website

☐ Save my name, email, and website in this browser for the next time I comment.

Post Comment

Search:

e.g. whirlpool wrf535swhz

Search

[Manuals+](#) | [Upload](#) | [Deep Search](#) | [Privacy Policy](#) | [@manuals.plus](#) | [YouTube](#)

This website is an independent publication and is neither affiliated with nor endorsed by any of the trademark owners. The "Bluetooth®" word mark and logos are registered trademarks owned by Bluetooth SIG, Inc. The "Wi-Fi®" word mark and logos are registered trademarks owned by the Wi-Fi Alliance. Any use of these marks on this website does not imply any affiliation with or endorsement.