



# SIERRA 053001-10 Automatic Float Switch Instruction Manual

[Home](#) » [SIERRA](#) » SIERRA 053001-10 Automatic Float Switch Instruction Manual 



053001-10  
Automatic float switch  
Installation and operating manual

## Contents

- [1 053001-10 Automatic Float Switch](#)
- [2 Installation](#)
- [3 Operation](#)
- [4 Maintenance](#)
- [5 Documents / Resources](#)
  - [5.1 References](#)

## 053001-10 Automatic Float Switch

### USA and Canada

Service Office Dometic  
1 Sierra Place  
Litchfield, IL 62056-3029  
877-663-8396 (option 1)

### Service center and dealer locations

Visit: [www.sierraparts.com](http://www.sierraparts.com)

The automatic float switch, hereinafter referred to as switch, provides fully automatic protection from rising bilge water for electrically operated bilge pumps. The switch is made of corrosion-resistant materials.

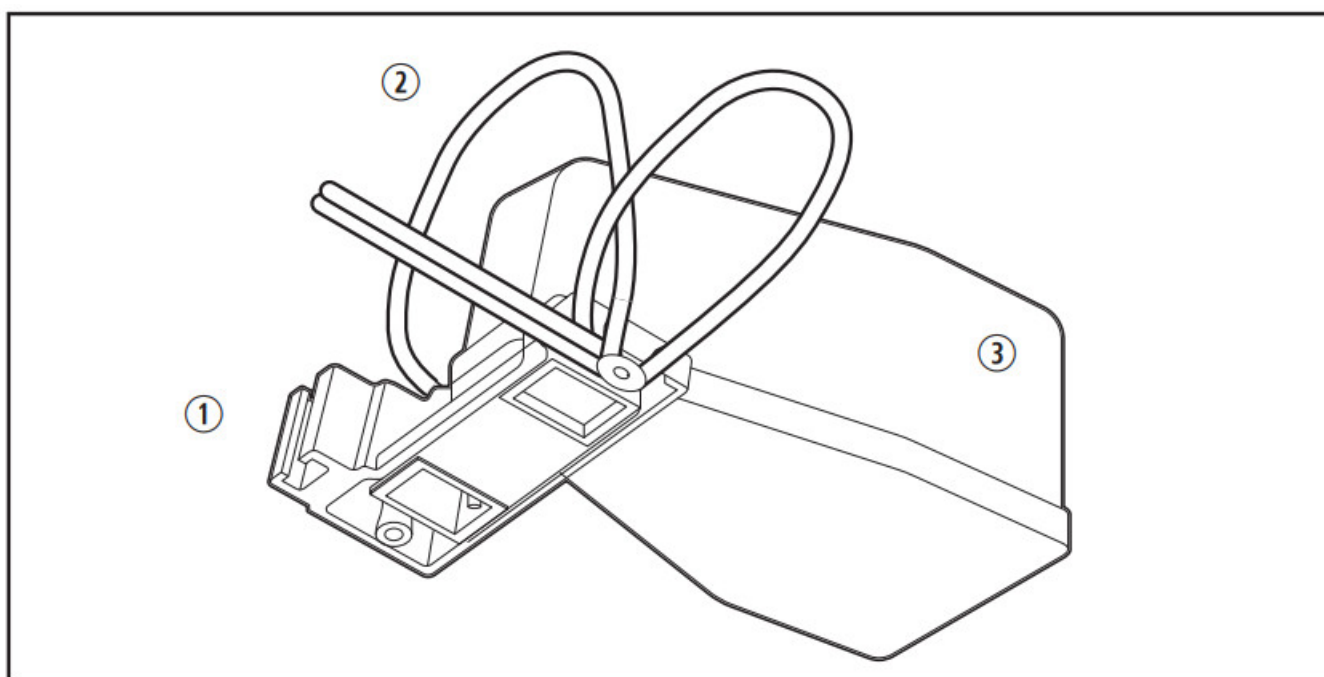
### Specifications

Amps	15 A <sup>1</sup>
Voltage	12 VDC 180 W; Only use for voltages up to 48 V
Fuse	Use the fuse size recommended for the bilge pump.

## Installation

**WARNING:** ELECTRICAL SHOCK, FIRE, AND/OR EXPLOSION HAZARD. Failure to obey the following warnings could result in death or serious injury:

- Be sure that the boat is disconnected from shore and battery power before installing the switch.
- Always install the switch, bilge pump control, and any other switches or fuses between the positive (+) terminal of the battery and the positive (+) connection of the bilge pump.
- All electrical connections must be placed about the highest water level and secured to prevent them from falling down onto the automatic float switch. Consider the following when determining the installation location:
- Always install the switch in parallel to the keel with the the floating body directed aft.
- Never install the switch at a level lower than the inlet of the bilge pump.
- The switch must be installed so that the floating body can move freely and that no floating particles will interrupt the movement.



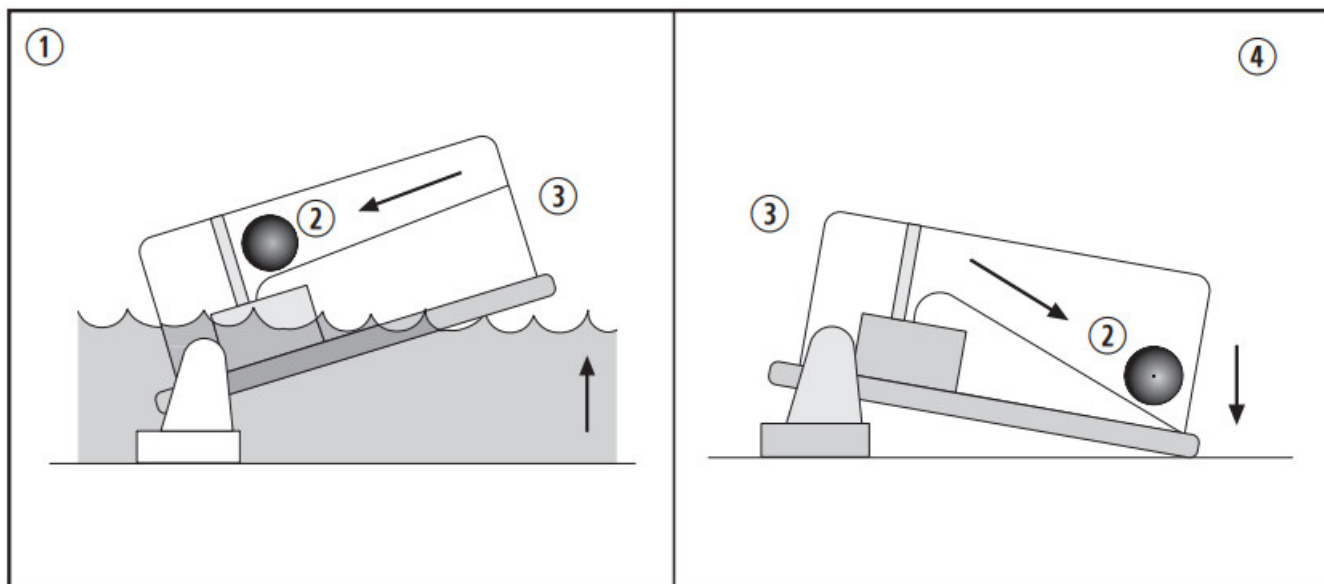
### 1 Preparing the wire loops

1 Base plate 2 Wire	3 Floating body
------------------------	-----------------

1. Form two 5.9 in. (15 cm) loops in the wire.
2. Lock the wires into the grooves in the base plate.
3. If the bilge pump is equipped with a T-mount, push the base plate into the T-slot on the pump housing or mounting bracket.

4. (Optional) Apply a drop of water-proof adhesive to lock the switch to the T-mount.
5. Otherwise, secure the base plate to the deck with screws.
6. If the switch is wired to the panel at the helm, the installation is complete. Otherwise, go to the next step.
7. Connect the switch and fuse between the positive (+) terminal of the battery and the positive (+) brown pump wire.
8. Connect the negative (-) black wire of the pump directly to the negative (-) terminal of the battery.

## Operation



## 2 Automatic float switch

1 On 2 Ball	3 Floating body 4 Off
----------------	--------------------------

Water in the bilge lifts the floating body, moving the ball and activating the switch which activates the bilge pump. Once sufficient water has been pumped out of the bilge, the floating body returns to the deck, moving the ball and deactivating the switch.

## Maintenance

Check the switch periodically during use to be sure that the electrical wires are undamaged and that dirt or debris do not interfere with free movement of the floating body.



### WARNING

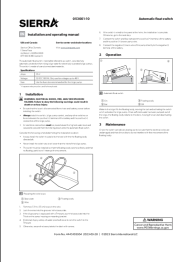
Cancer and Reproductive Harm [www.P65Warnings.ca.gov](http://www.P65Warnings.ca.gov)

# SIERRA<sup>®</sup>

Form No. 4445103954 2023-03-28

©2023 Sierra International LLC

## Documents / Resources

	<p><a href="#">SIERRA 053001-10 Automatic Float Switch</a> [pdf] Instruction Manual 053001-10 Automatic Float Switch, 053001-10, Automatic Float Switch, Float Switch, Switch</p>
---	---

## References

- [P65Warnings.ca.gov](https://www.p65warnings.ca.gov/)
- [SIERRA Parts and Accessories to Keep Your Boat On the Water | Sierraparts.com](#)
- [User Manual](#)