



## SIEMENS TC 863 Series Filter Coffee Machine User Manual

[Home](#) » [SIEMENS](#) » SIEMENS TC 863 Series Filter Coffee Machine User Manual 

## Contents

- [1 SIEMENS TC 863 Series Filter Coffee Machine](#)
- [2 Product Information](#)
- [3 Register Your Product](#)
- [4 Further Notices for Use](#)
- [5 Safety](#)
- [6 Preventing material damage](#)
- [7 Overview](#)
- [8 Preparing the appliance for first use](#)
- [9 General information](#)
- [10 Brewing coffee](#)
- [11 Auto switch-off](#)
- [12 Timer function](#)
- [13 Aroma Sense Plus](#)
- [14 Thermos jug1](#)
- [15 Opening, closing and removing the lid](#)
- [16 Descaling the appliance](#)
- [17 Overview of cleaning](#)
- [18 Disposing of old appliance](#)
- [19 Disposing of old appliance](#)
- [20 Customer Service](#)
- [21 Documents / Resources](#)
  - [21.1 References](#)
- [22 Related Posts](#)

# SIEMENS

**SIEMENS TC 863 Series Filter Coffee Machine**



## Product Information

The product is a filter coffee machine available in two models – TC 863 and TC 865. The appliance comes with a water tank with a water level display, a time display, aromaSense Plus feature, and a choice of a thermos or glass jug depending on the model. The coffee machine has automatic shut off and timer functions. The appliance should be connected to an alternating current power supply via a properly installed socket with earthing.

## Register Your Product

Register your product on My Siemens to discover exclusive services and offers. Visit [siemens-home.bsh-group.com/welcome](https://siemens-home.bsh-group.com/welcome) to register your product.

## Further Notices for Use

To find additional information about your appliance or accessory, scan the QR code or visit <https://digitalguide.bsh-group.com> to open the Further Notices for Use.

## Safety

- Read this instruction manual carefully.
- Keep the instruction manual and the product information safe for future reference or for the next owner. Only use this appliance:
- In private households and in enclosed spaces in a domestic environment at room temperature. j for normal

processing quantities and for normal processing times for domestic use.

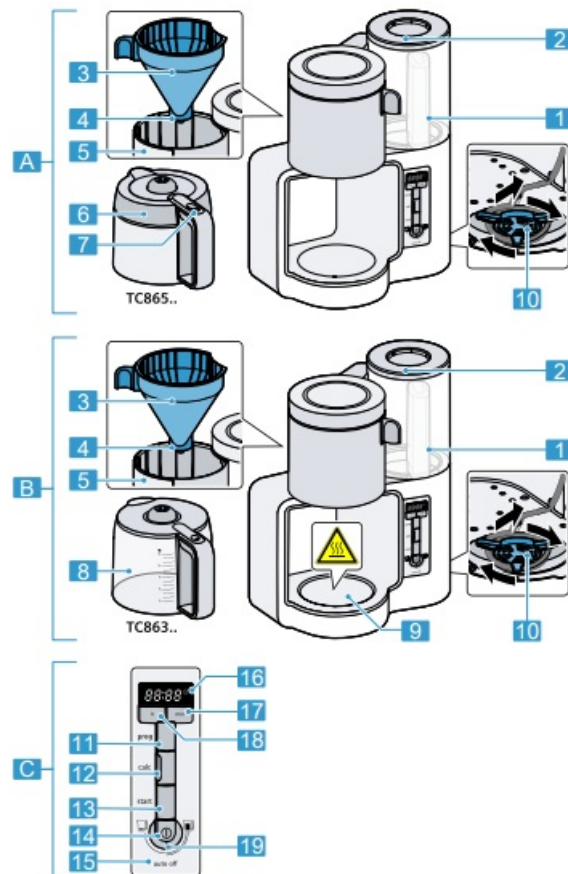
- Up to an altitude of max. 2000 m above sea level.
- For brewing filter coffee. This appliance may be used by children aged 8 or over and by people who have reduced physical, sensory or mental abilities or inadequate experience and/or knowledge, provided that they are supervised or have been instructed on how to use the appliance safely and have understood the resulting dangers. Do not let children play with the appliance. Children must not perform cleaning or user maintenance unless they are at least 8 years old and are being supervised. Keep children under the age of 8 years away from the appliance and power cable.
  - Keep packaging material away from children.
  - Do not let children play with packaging material.
  - Keep small parts away from children.
  - Do not let children play with small parts.
  - Connect and operate the appliance only in accordance with the specifications on the rating plate.
  - Connect the appliance to a power supply with alternating current only via a properly installed socket with earthing.
  - The protective conductor system of the domestic electrical installation must be properly installed.
  - Never operate a damaged appliance.
  - If the appliance or the power cord is damaged, immediately un-plug the power cord or switch off the fuse in the fuse box.
  - Repairs to the appliance should only be carried out by trained specialist staff.
  - If the power cord of this appliance is damaged, it must be replaced by the manufacturer, the manufacturer's Customer Service or a similarly qualified person in order to prevent any risk.
  - Never immerse the appliance or the power cord in water or clean in the dishwasher.
  - Liquids must not be spilled on the appliance plug connection.
  - Ventilate the appliance adequately.
  - Never operate the appliance in a cupboard.
  - place the appliance on or near hot surfaces.
  - Never cover the warming plate.
  - use replacement jugs that are approved for your model by customer service.
  - Never touch hot appliance parts.
  - Allow hot appliance parts to cool down before touching.
  - Only hold the jug by the handle.
  - To avoid injuries, only use the appliance for its intended purpose.
  - Persons with electronic implants must stay at least 10 cm away from the appliance and the water tank when removed.
  - Follow the cleaning instructions.
  - Clean surfaces which come in contact with food before each use.
  - To prevent bacteria forming, do not keep dairy products, baby food or similar foodstuffs in the thermos jug or keep them warm in it.

## **Preventing material damage**

- Only use the appliance with fresh, cold, non-carbonated water. Never add milk, ready-made drinks or instant products.

- Never operate the appliance when empty or overfilled. Observe the water level indicator.
- Leave the appliance to cool down for at least 5 minutes after each use.
- Never heat the thermos jug in the microwave or oven.
- Never put the thermos jug or the lid of the thermos jug in the dishwasher or in soapy water.
- Only place the jug in the appliance with the lid closed.
- Do not remove the jug during the brewing process.
- Only use the jug supplied.

## Overview



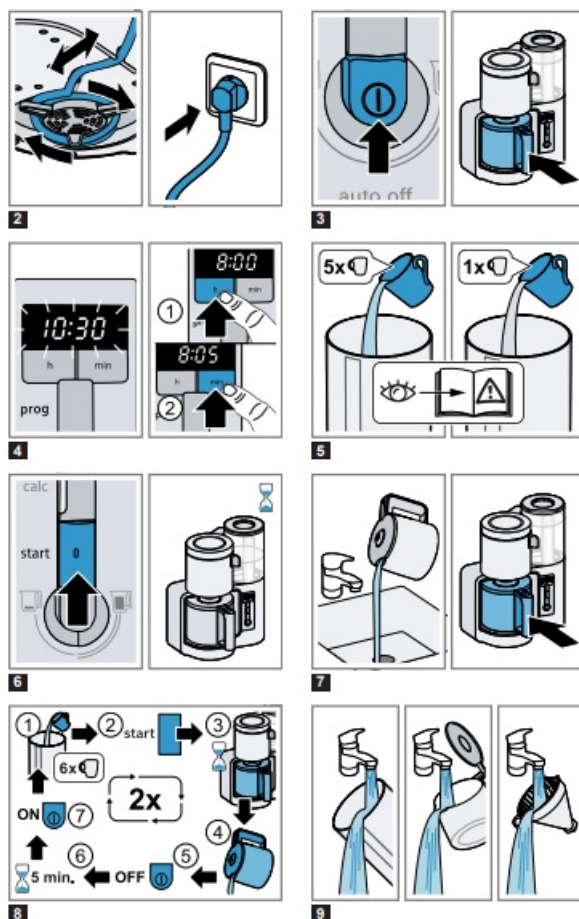
- A Coffee machine with thermos jug1
- B Coffee machine with glass jug1
- C Controls

1. Water tank with water level indicator, removable
2. Cover for water tank, removable
3. Filter holder, removable
4. Drip stop
5. Filter housing, swivelling
6. Thermos jug with lid1
7. Lid-opening button
8. Glass jug with lid1
9. Warming plate1
10. Cord storage compartment

11. Programming button
12. Descaling button
13. Start button
14. On/off button
15. Automatic switch-off indicator
16. Time display
17. Setting button Minutes
18. Setting button Hours
19. "aroma Sense Plus" indicator

## Preparing the appliance for first use

- Perform the first cleaning process with a mixture of 5 cups of water and 1 cup of vinegar.
- Before each rinsing process, press the on/off button, leave the appliance to cool down for 5 minutes and switch it on again using the on/off button.
- Run the rinsing process twice using 6 cups of water without adding vinegar.



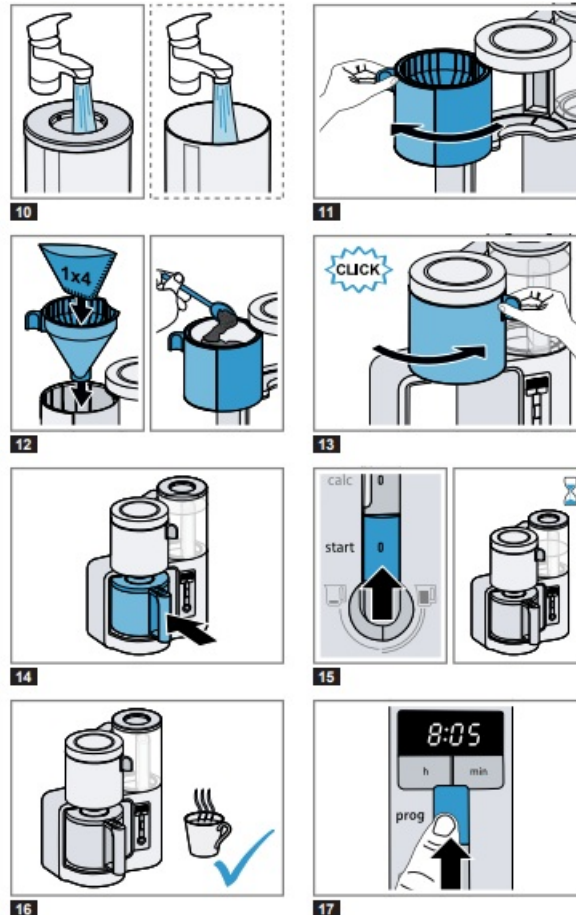
## General information

- Observe the water level indicator on the water tank. Do not fill the water tank any higher than the top marking line.
- Add approx. 7 g medium-ground coffee for each cup.
- Store ground coffee in a cool place or freeze.
- Once a pack of coffee has been opened, always close it tightly to preserve the aroma.

- How coffee beans are roasted affects their flavour and aroma. Darker roast = more flavour Lighter roast = more acidity
- Condensation may form on the filter housing for technical reasons.

## Brewing coffee

Follow the illustrated instructions. Fig. 10 – 16



## Auto switch-off

Your appliance is equipped with an automatic switch-off function that switches the appliance to energy-saving mode after a certain period of time. Models with a thermos jug switch to energy saving mode a few minutes after the end of brewing. Models with a glass jug keep the coffee warm for approx. 40 minutes and then switch to energy-saving mode. The auto off indicator lights up until the coffee machine automatically switches to energy-saving mode.

## Timer function

Your appliance is equipped with a timer function, which will start the brewing process automatically at the required start time.

**Note:** If the appliance has been completely switched off with the on/off button or the power supply has been disconnected, the time on the clock and the start time will be saved for around 4 days. After a lengthy interruption the time on the clock and the start time have to be reset.

## Setting the time

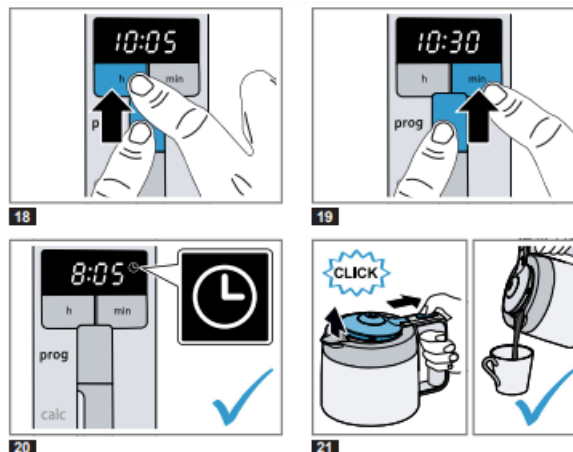
1. Press h and min buttons at the same time.

- The display flashes.
2. Use the h and min buttons to set the current time.
    - The time is set.

## Setting the start time

### Requirements

- The appliance must be switched on or be in energy-saving mode.
- The clock must be set to the current time.
- Only switch the timer function on when the appliance has been filled and prepared for use.



## Switching the timer on or off

1. To check the time set, press and hold the prog button.
  - The start time is displayed.
2. To switch the timer on or off, press prog button briefly.
  - If lights up, the timer is switched on.
  - If is not lit up, the timer is switched off.

## Aroma Sense Plus

- An Plus aroma sensor detects the volume of water added and automatically adjusts the brewing time.
- If less than 4 cups of coffee are to be brewed, the LED display next to the symbol lights up. The brewing time is automatically extended to ensure the full coffee aroma.
- If more than 4 cups of coffee are to be brewed, the entire LED display as far as the symbol lights up.

## Thermos jug1

The thermos jug has a capacity of around 8 cups.

### Notes

- The seal is not hermetically tight to stop it adhering through a suction effect.
- Never transport the thermos jug in a horizontal position or coffee might leak out.
- Do not keep or transport carbonated drinks in the thermos jug.

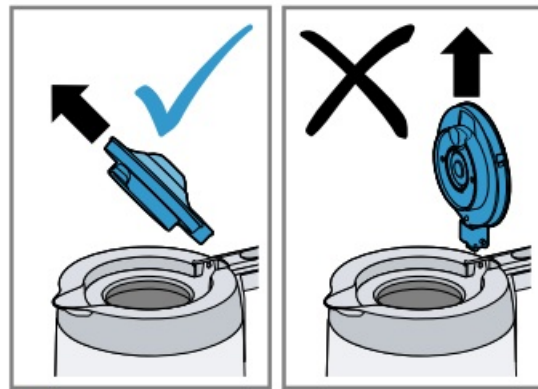


- If you rinse the thermos jug with hot water before use, the coffee will stay hot for longer.

## Opening, closing and removing the lid



22

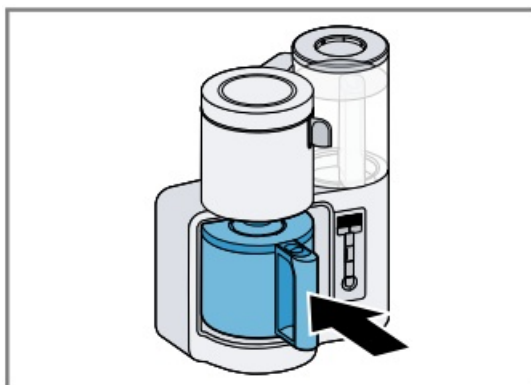


23

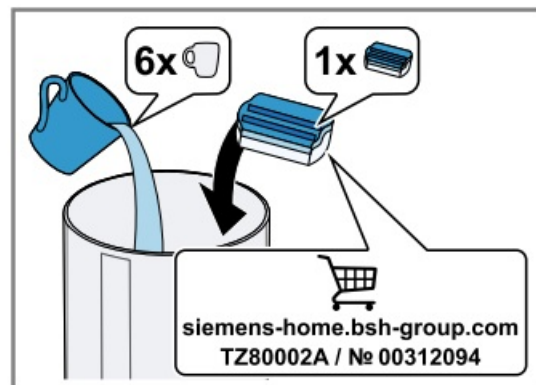
## Descaling the appliance

### Notes

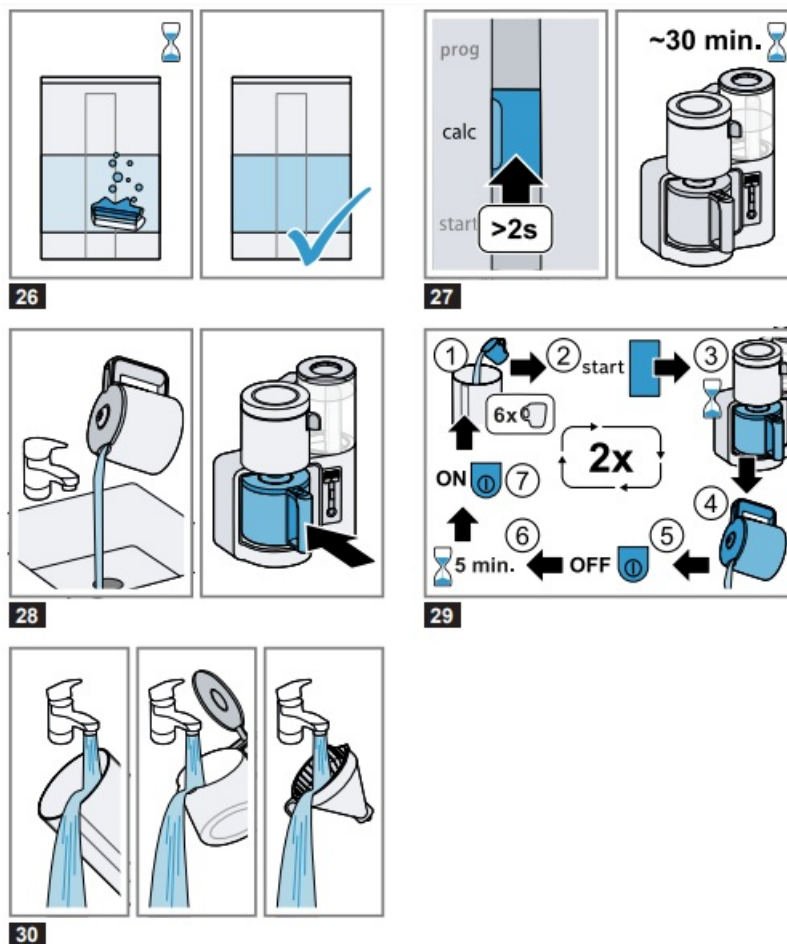
- Regular descaling:
  - prolongs the life of the appliance
  - ensures proper functioning
  - prevents excessive steam
  - shortens the brewing time
  - saves energy
- If you are descaling the appliance with a commercially available descaler, follow the manufacturer's instructions for use and safety. Do not use de-scaler with phosphoric acid.
- If the appliance is brewing more slowly or switches off before the brewing process ends, descale it.



24



25



## Overview of cleaning

- Do not use cleaning agents containing alcohol or spirits.
- Do not use sharp, pointed or metal objects.
- Do not use abrasive cloths or cleaning agents.

	✓	✗	✗	✗	✗
	✓	✓	✗	✓	✗
	✓	✓	✓	✓	✓
	✓	✓	✗	✗	✗

## Notes

- After each use, clean all parts thoroughly and rinse out.
- Remove stubborn deposits in the thermos jug with a solution of baking soda, dishwasher granulate or denture tablets.
- Store the thermos jug with the lid open to prevent any odors and bacteria forming.

## Disposing of old appliance

- If the drip stop is leaking:
  - Remove the filter holder and clean the drip stop under running water.
  - Press the drip stop towards the filter holder with your finger several times.


## Disposing of old appliance

Dispose of the appliance in an environmentally friendly manner. Information about current disposal methods are available from your specialist dealer or local authority. This appliance is labelled in accordance with European Directive 2012/19/EU concerning used electrical and electronic appliances (waste electrical and electronic equipment – WEEE). The guideline determines the framework for the return and recycling of used appliances as applicable throughout the EU.

## Customer Service

Detailed information on the warranty period and terms of warranty in your country is available from our after-sales service, your retailer or on our website. The contact details for Customer Service can be found in the enclosed Customer Service directory or on our website.

## Documents / Resources

	<p><a href="#">SIEMENS TC 863 Series Filter Coffee Machine</a> [pdf] User Manual            TC 863 Series, TC 865 Series, TC 863 Series Filter Coffee Machine, Filter Coffee Machine, Coffee Machine</p>
---	--

## References

- [G Group Publishing](#)
- [S Welcome to Siemens Home Appliances International](#)
- [S My Siemens - Your world of possibilities | Siemens Home](#)
- [B/S/H/ Home | BSH Hausgeräte GmbH](#)