



# SIEMENS Tandem Combination Type Arc-Fault Circuit Intereupters Instructions

[Home](#) » [SIEMENS](#) » SIEMENS Tandem Combination Type Arc-Fault Circuit Intereupters Instructions

## Contents [ [hide](#) ]

- 1 [SIEMENS Tandem Combination Type Arc-Fault Circuit Intereupters Instructions](#)
- 2 [Tandem Combination Type Arc-Fault Circuit Interrupters \(CAFCI\)](#)
- 3 [Features](#)
- 4 [Technical Data](#)
- 5 [Wiring Diagrams](#)
  - 5.1 [Pigtail](#)
  - 5.2 [Plug-On Neutral](#)
- 6 [Dimension Diagrams](#)
  - 6.1 [Pigtail](#)
- 7 [Plug-On Neutral](#)
- 8 [Time Current Characteristic Curve – 15A](#)
- 9 [Time Current Characteristic Curve – 20A Time in](#)
- 10 [Read More About This Manual & Download PDF:](#)
- 11 [Documents / Resources](#)
  - 11.1 [References](#)
- 12 [Related Posts](#)

## SIEMENS Tandem Combination Type Arc-Fault Circuit Intereupters Instructions



### Tandem Combination Type Arc-Fault Circuit Interrupters (CAFCI)

Siemens Tandem AFCI Breakers are the perfect solution to wiring made easier. The design allows for more circuits in a smaller loadcenter. Installed indicator flags disappear when the load wires are inserted correctly. Siemens CAFCI Plug-On breakers now have a single load lug(s) only. Wiring made easier with the neutral lug removed. These breakers can be installed in the same manner as the thermal magnetic breakers. This allows the installer to land ground and neutral conductors in the load center before installing the breaker and load conductor. Tandem AFCI breakers without the rejection feature can be installed in any panel that lists that breaker type or where a substitution letter exists for that breaker type. The schematic, located on the wiring diagram, will indicate the positions where these breakers can be placed by showing two circuits per space. The total circuits listed for panel should not be exceeded.



***Pigtail***

Plug-On Neutral



### Features

- One breaker feeds two circuits to save on space and time

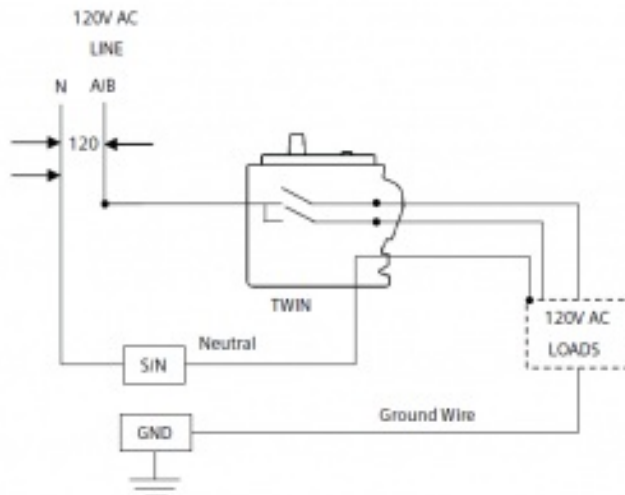
- Installed indicator flags disappear when the load wires are inserted correctly
- Load Lug(s) only
- Available in pigtail and Plug-On neutral types
- Trusted Plug-On Neutral connection
- LED indicators for troubleshooting
- Insta-wire connectors

## Technical Data

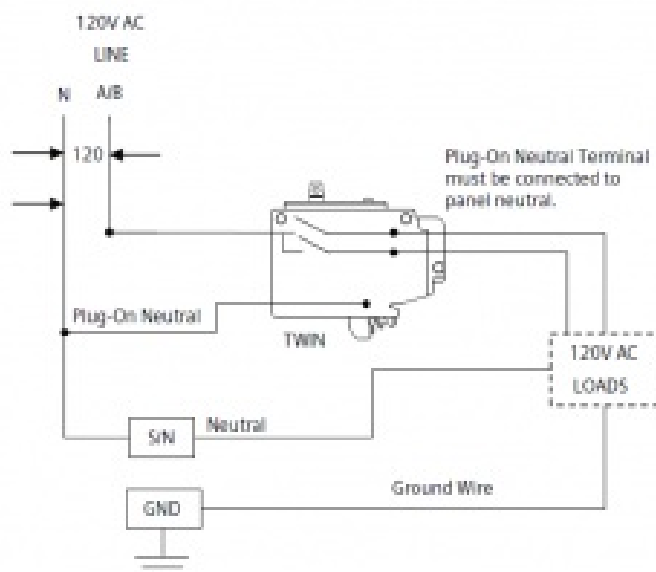
- 10,000 AIC
- 120V
- UL Listed
- HACR and SWD rated

## Wiring Diagrams

### Pigtail

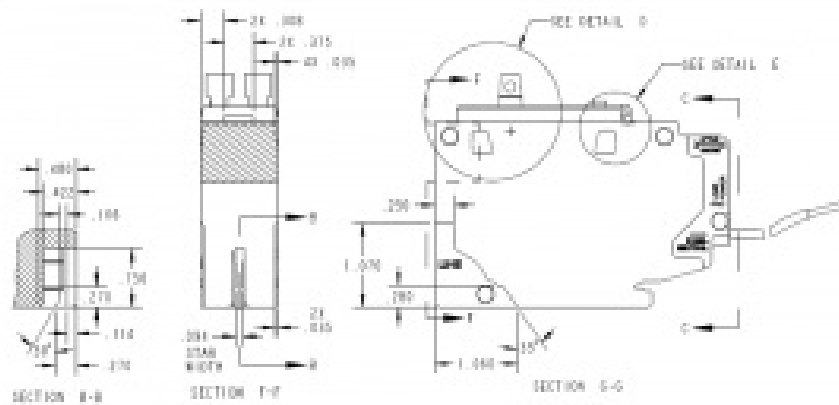


### Plug-On Neutral

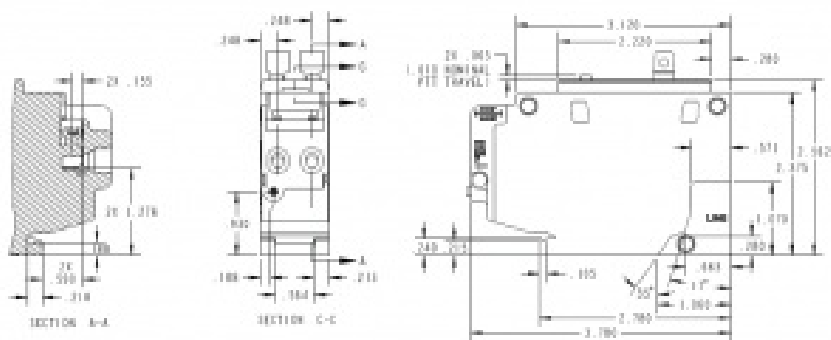


## Dimension Diagrams

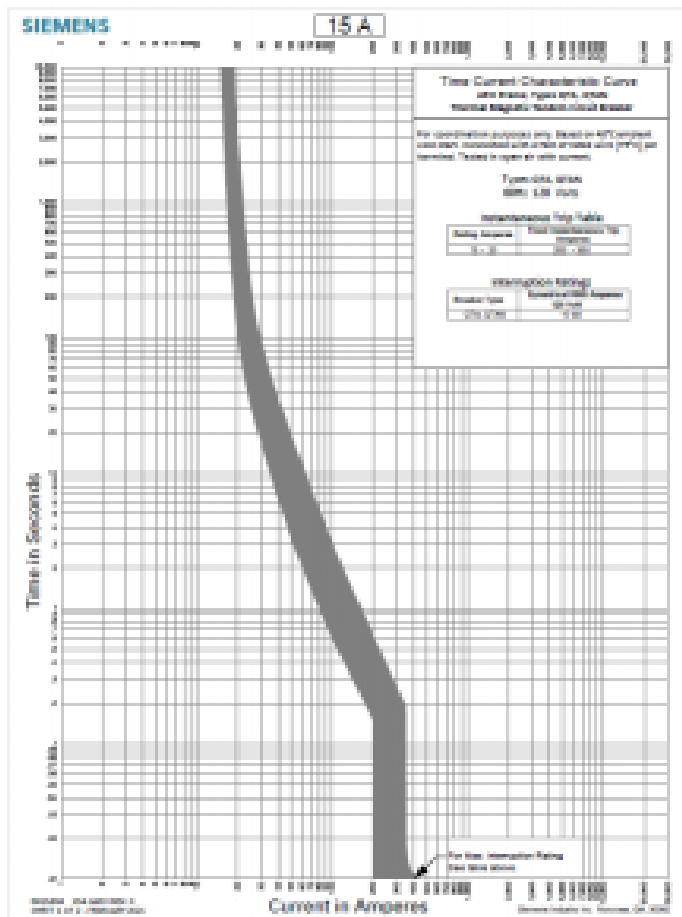
## Pigtail



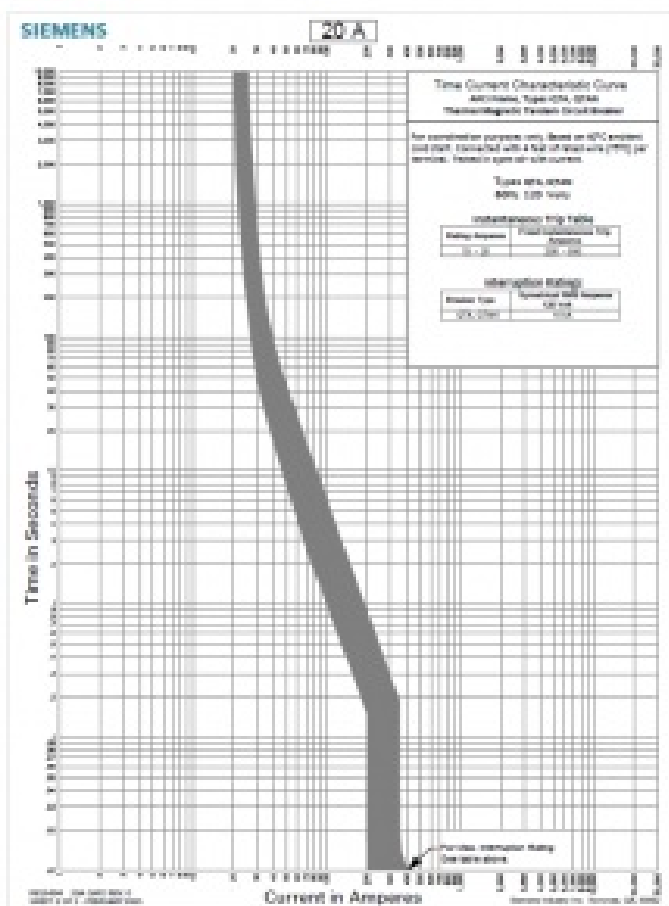
## Plug-On Neutral



### Time Current Characteristic Curve – 15A




**Time Current Characteristic Curve – 20A Time in**



The technical data presented in this document is based on an actual case or on as-designed parameters, and therefore should not be relied upon for any specific application and does not constitute a performance guarantee for any projects. Actual results are dependent on variable conditions. Accordingly, Siemens does not make representations, warranties, or assurances as to the accuracy, currency or completeness of the content contained herein. If requested, we will provide specific technical data or specifications with respect to any customer’s particular applications. Our company is constantly involved in engineering and development. For that reason, we reserve the right to modify, at any time, the technology and product specifications contained herein

***Read More About This Manual & Download PDF:***

**Documents / Resources**



[\*\*SIEMENS Tandem Combination Type Arc-Fault Circuit Intereupters\*\*](#) [pdf] Instructions  
CAFCI, Tandem Combination Type Arc-Fault Circuit Intereupters

**References**

- [\*\*S Arc Fault Breakers - AFCI Breakers | Circuit Breakers - Residential Breakers | Siemens USA\*\*](#)