



# SIEMENS STRI-M Addressable Interface Module Instruction Manual

[Home](#) » [SIEMENS](#) » SIEMENS STRI-M Addressable Interface Module Instruction Manual 

## SIEMENS

### Contents

- [1 SIEMENS STRI-M Addressable Interface Module](#)
- [2 Installation Instructions Model STRI-M](#)
- [3 WIRING](#)
- [4 MOUNTING](#)
- [5 Documents / Resources](#)
  - [5.1 References](#)
- [6 Related Posts](#)

### SIEMENS STRI-M Addressable Interface Module



### Installation Instructions Model STRI-M

### Addressable Interface Module

The Model STRI-M Series Addressable Interface Module from Siemens Building Technologies, Inc. interfaces direct shorting devices to the FDLC loop circuit of the FS-250C System. The STRI-M can monitor a normally open or closed dry contact and it can report the status of the contact.

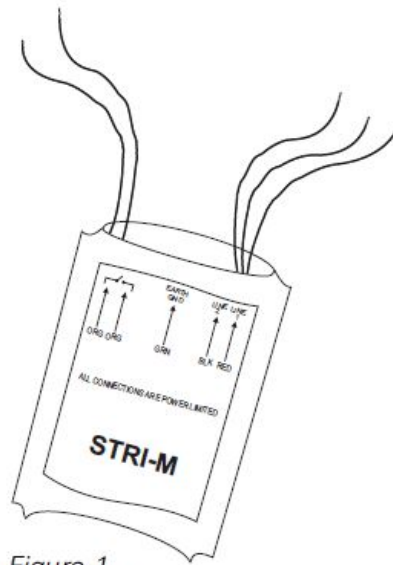


Figure 1  
STRI-M Module

## PROGRAMMING

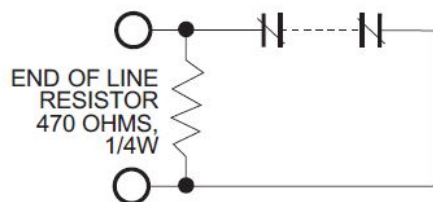
Refer to Figure 1 to locate the red and black FDLC loop circuit wires of the STRI-M. Connect the Addressable Loop Driver circuit wires of the STRI-M to the Model SDPU Programmer/Tester. Use the cable provided with the Programmer/Tester and the 2 alligator clip to banana plug adapters provided.

## CAUTION

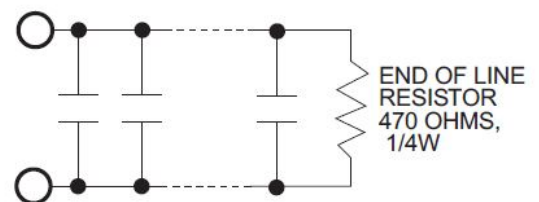
### To Prevent Damage To The SDPU:

DO NOT connect a STRI-M to the SDPU until all field wiring is removed from the red and black FDLC loop circuit wires of the STRI-M. Connection from the SDPU to the STRI-M is not polarity sensitive. Refer to Figure 3 for the proper connections to the control panel. (Refer to Figure 2.) Follow the instructions in the SDPU Programmer/Tester Manual (P/N 315-033260C) to program the desired address into STRI-M. Record the device address on the label located on the STRI-M. The STRI-M can now be installed and wired to the system.

### NORMALLY CLOSED PROGRAMMABLE SWITCHES (SEE NOTE 4)



### NORMALLY OPEN PROGRAMMABLE SWITCHES (SEE NOTES 2 AND 3)



## NOTES:

1. There can be any number of normally closed or normally open switches.
2. The end of line resistor must be located at the last switch.
3. Do not wire a normally closed switch across the end of line resistor.
4. Only for use with status applications.

Figure 2  
Wiring Switches

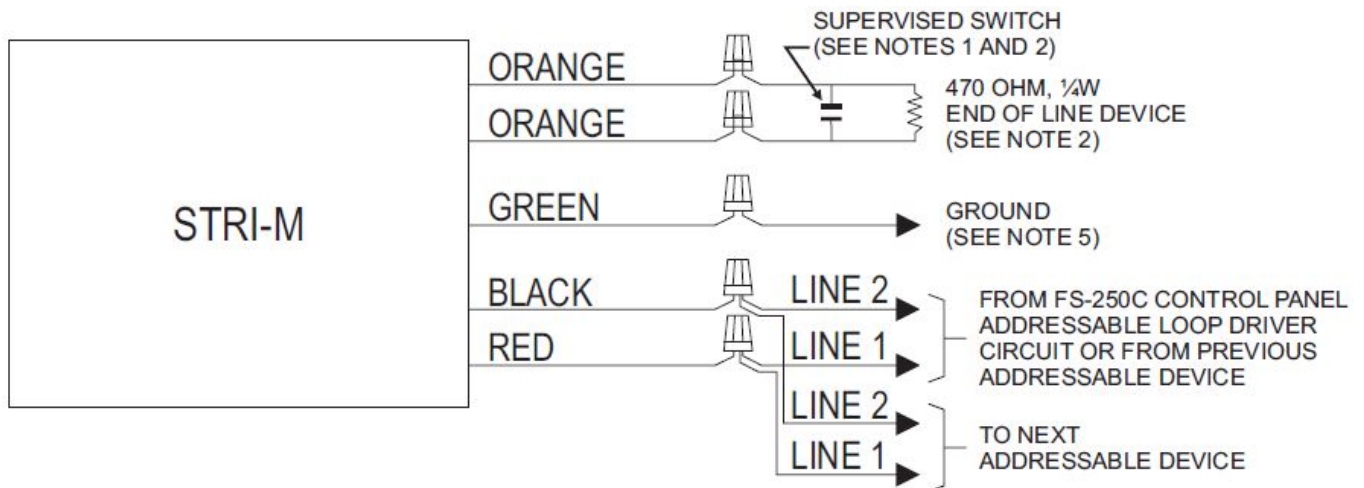
## WIRING

(Refer to Figure 3.) Refer to the wiring diagram and wire the addressable interface module accordingly.

### NOTE

#### Recommended wire size:

- 18 AWG minimum
- 14 AWG maximum



**Figure 3**

Installing the STRI-M Wiring.

### NOTES:

1. All supervised switches must be held closed and/or open for at least a quarter of a second to guarantee detection.
2. End of line device: 470 ohm, 1/4W resistor, P/N 140-820164. Use Model EL-33 with 470 ohm, 1/4W resistor.
3. STRI-M is polarity insensitive. Line 1 and Line 2 can be either line of the loop.
4. Addressable Loop Electrical ratings:  
**Voltage:** 24 VDC pulsing, 31 VDC max.  
**Current maximum:** 1.3mA during polling
5. The supervised switches have the following ratings:  
**Voltage maximum:** 6 VDC  
**Current maximum:** 6mA during polling Contact resistance maximum: 10 ohms.  
**Maximum cable length:** 200 feet (18 AWG)  
**Max line size:** 14 AWG  
**Min line size:** 18 AWG

### CAUTION

Ground shield ONLY at the specified location on the Control Panel. EOL device must be a 470 ohm, 1/4 W resistor. When replacing an existing STRI on a device loop, you must also replace the EOL resistor if it is not 470 ohms, 1/4W.

6. The green wire must be connected to earth ground.

- Use wire nuts to pass the shield wire through the electrical box with NO connection to the device green wire.
- Use shielded wire to connect the switch wiring.
- Tie the switch wiring shield to earth ground.

7. In supervisory: STRI-M draws 1.3mA

8. All circuits are power limited.

9. Positive and negative ground fault detected at <60K ohms for orange terminals.


## MOUNTING

The Model STRI-M mounts directly into a single gang switchbox (user supplied). Connect the appropriate wires using wire nuts. Tuck the STRI-M module inside the electrical box and dress the wiring as required. (See Figure 4.).

**Siemens Building Technologies, Ltd. 2 Ken view Boulevard**  
Brampton, Ontario L6T 5E4 Canada.

[firealarmresources.com](http://firealarmresources.com)

## Documents / Resources

 <p><b>SIEMENS</b> Supervisory Technology Model STRI-M</p> <p>The STRI-M module is a single gang switchbox (user supplied) that provides a means for connecting the STRI-M module to the fire alarm system. The module is designed to be installed in a single gang switchbox and provides a means for connecting the STRI-M module to the fire alarm system. The module is designed to be installed in a single gang switchbox and provides a means for connecting the STRI-M module to the fire alarm system.</p>	<p><a href="#">SIEMENS STRI-M Addressable Interface Module</a> [pdf] Instruction Manual STRI-M, STRI-M Addressable Interface Module, Addressable Interface Module, Interface Module, Module</p>
--	---

## References

-  [Fire Alarm Resources | Download fire alarm documents](#)