


SIEMENS RTL – Real Time Reliability User Guide

[Home](#) » [SIEMENS](#) » SIEMENS RTL – Real Time Reliability User Guide 

Contents

- 1 SIEMENS RTL – Real Time Reliability
- 2 Product Information
- 3 Product Usage Instructions
- 4 The Registration Process
- 5 Navigation
- 6 Profile
- 7 Dashboard
- 8 PO Overview – Entry
- 9 PO Overview – Data
- 10 PO Overview – Corrections
- 11 KPI View – Entry
- 12 Documents / Resources
 - 12.1 References
- 13 Related Posts

SIEMENS

SIEMENS RTL – Real Time Reliability

RTL – Real Time Reliability Quick Guide for suppliers

SIEMENS

Product Information

Specifications:

- Product Name: Siemens Supplier Portal
- Language: German (English translation available)
- Access: Online portal

Product Usage Instructions

Registration Process:

1. Open <https://rtl-portal.siemens.cloud>
2. Note: The registration form is only available in German
3. Click “Registrieren” and fill out the form with your email address, password, surname, and last name.
4. Complete the process by clicking “Registrieren”. Verify your email address through the confirmation email from SiemensID.
5. Log in to SiemensID using your email address and password.
6. Complete the one-time registration with RTL by filling out the data form.
7. Wait to be unlocked by an admin. You will receive feedback once unlocked.

Navigation:

- **Dashboard:** Shows delivery performance over the last six months and displays supplied plants as a reference.
- **PO Overview:** Displays all orders over a period with options to view delivery dates, goods receipt, and report delivery delays.
- **Profile:** View and adjust settings such as language and linked Supplier ID.
- **KPI View:** Displays supplier letter data and allows saving as PDF or sending via email.

Profile:

In the Profile section, you can adjust your displayed name, change language settings, and view the linked Supplier ID.

Dashboard:

The Dashboard provides an overview of plants supplied in the last six months, notifications for corrections, and delivery performance details.

PO Overview – Entry:

Select the period to view orders, choose plants for order display, and filter data based on goods receipt or delivery date.

PO Overview – Data:

View all relevant order information in the table, configure table settings, and show/hide columns as needed.

PO Overview – Actions:

Select order lines to take actions like editing or processing orders.

FAQ:

- **Q: Can I change my registration details after completing the initial registration?**

A: Yes, you can adjust your registration details at any time in the Profile section of the portal.

- **Q: How can I report delivery delays within the system?**

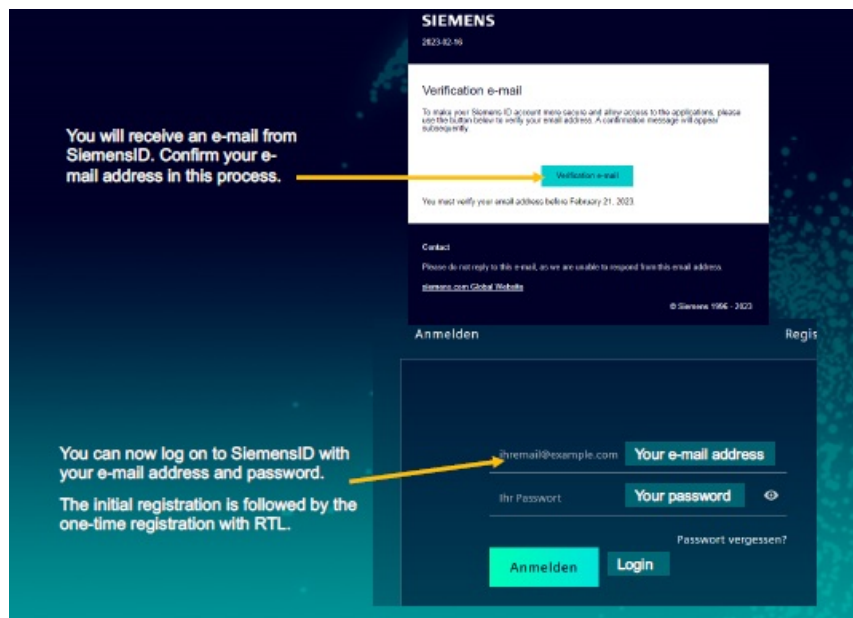
A: You can report delivery delays in the PO Overview section by selecting the respective order and using the available options.

The Registration Process

Open <https://rtl-portal.siemens.cloud>

Note registration form is only available in German

The screenshot shows the 'Siemens ID Login Service' interface. On the left, there is a dark blue sidebar with white text. At the top, it says 'Note: The registration form is only available in German'. Below this, it says 'Click "Registrieren" and fill out the form. You can use your own name here.' At the bottom of the sidebar, it says 'Complete the process by clicking "Registrieren". Now follows the verification of the e-mail address.' Two yellow arrows originate from this sidebar: one points to the 'Registrieren' button at the top of the main form, and the other points to the 'Registrieren' button at the bottom of the main form. The main form has a dark blue header with the title 'Siemens ID Login Service'. Below the header, there are two tabs: 'Anmelden' (left) and 'Registrieren' (right). The 'Registrieren' tab is active. The registration form contains the following fields: 'ihremail@example.com' (with a label 'Your e-mail address'), 'Ihr Passwort' (with a label 'Your password' and an eye icon), 'Ihr Vorname' (with a label 'Your surname'), and 'Ihr Nachname' (with a label 'Your last name'). There is a 'Pass' label next to the password field. At the bottom of the form, there is a checkbox labeled 'Ich stimme den Nutzungsbedingungen zu' and a 'Registrieren' button. The Siemens logo is visible in the bottom right corner.



Supplier user not registered 🇩🇪 🇬🇧

Please fill out the data form.

Name
Enter your name

Email address
Enter your e-mail

Supplier Name
Enter your supplier name

Enter an example purchase order number (optional)
Enter a purchase order number

Select default language
English

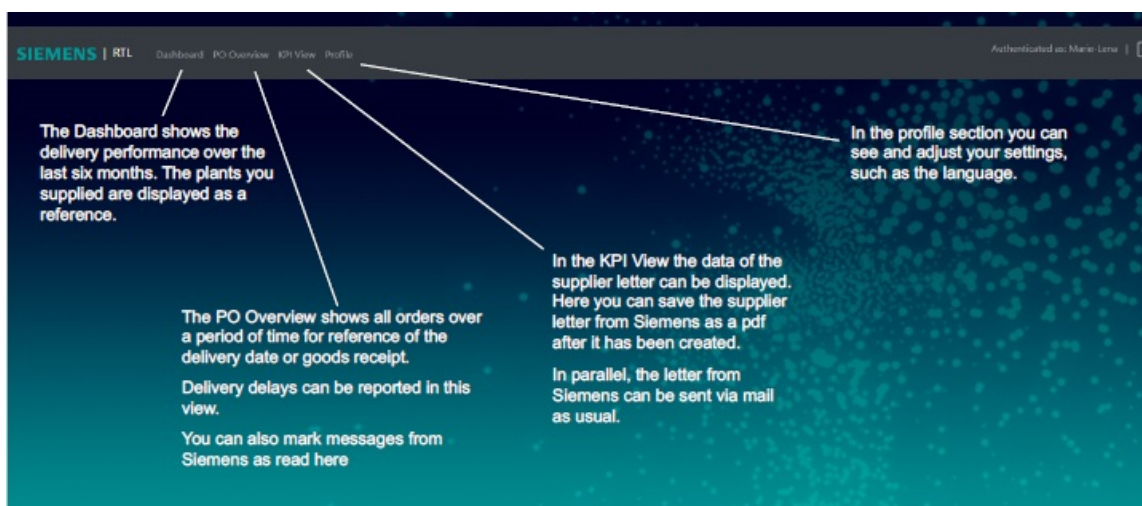
Submit

After completing this step, you need to be unlocked by an admin.

You will receive feedback once you are unlocked.

After completing this step, you need to be unlocked by an admin. You will receive feedback once you are unlocked.

Navigation



Profile

- In the Profile section your data are taken from the registration. You can adjust them at any time.
- Here you can customize the displayed name or change the language setting.
- In addition, we display the linked Supplier ID. This is the Siemens internal number with which we link your orders.

In the Profile section your data are taken from the registration. You can adjust them at any time.

Here you can customize the displayed name or change the language setting.

In addition, we display the linked Supplier ID. This is the Siemens internal number with which we link your orders.

User Profile

Full name

Email Address

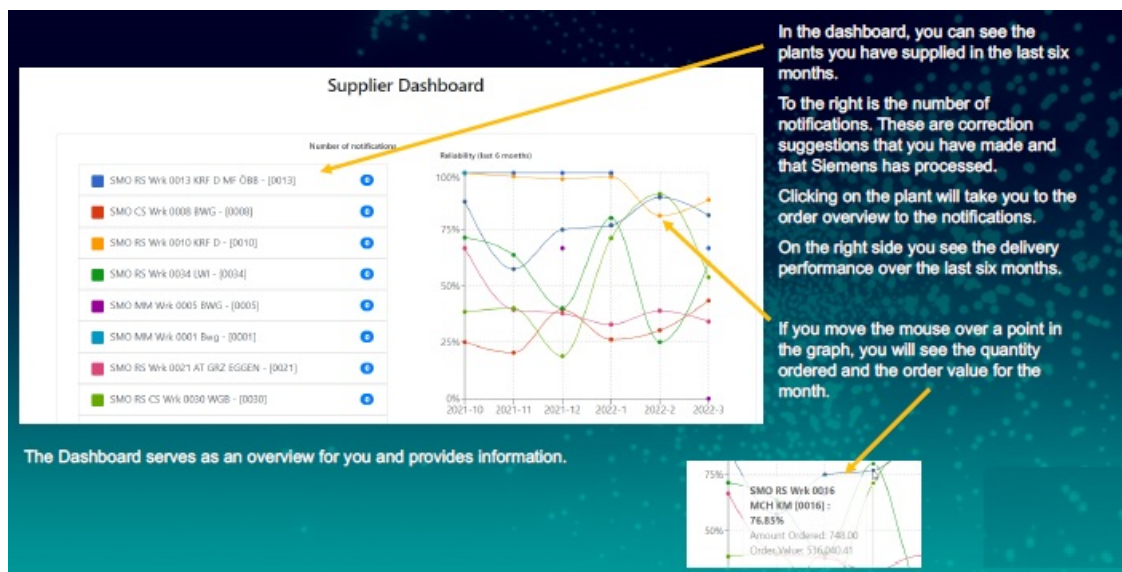
Select default language

English

Supplier Name

Supplier ID

Dashboard



- In the dashboard, you can see the plants you have supplied in the last six months.
- To the right is the number of notifications. These are correction suggestions that you have made and that Siemens has processed.
- Clicking on the plant will take you to the order overview to the notifications.
- On the right side you see the delivery performance over the last six months.
- If you move the mouse over a point in the graph, you will see the quantity ordered and the order value for the month.

The Dashboard serves as an overview for you and provides information.

PO Overview – Entry

SIEMENS | RTL Dashboard PO Overview KPI View Profile

Authenticated as: Marie-Lene | [Logout]

Year from: 2022 Month from: April To: 2022 To: April Goods receipt: Updated Data is updated ✓

SMD RS Wk 0010 KRF D [0010]

Actions Remove filter

STATUS	System	Client	Purchase order number	Item	Schedule line	Order placement	Order confirmation
P22		747		00010	0001	2021-02-23	2022
P22		747		00040	0001	2021-03-16	2021
P22		747		00070	0001	2021-03-16	2022

The PO Overview displays all orders over a period of time for reference of the delivery date or the goods receipt.

Select the period for which you want to see the data.

You can also display only those data that have a notification

You can select the time reference here. The following options are available:

1. Goods receipt
2. Delivery date

If you change a filter, the data will be updated. You can see the status here.

The system will show you which plants you can select to display the orders.

PO Overview – Data

Actions Remove filter

STATUS	System	Client	Purchase order number	Item	Schedule line	Order placement	Order confirmation
P22		747		00010	0001	2021-02-23	2022
P22		747		00040	0001	2021-03-16	2021
P22		747		00070	0001	2021-03-16	2022

In the table you can see all relevant information about an order.

The button allows you to configure the table. There is a default view. But you can also show and hide individual columns or change the width.

Select Columns to View/Hide

View	Hide
<input checked="" type="checkbox"/> STATUS	<input type="checkbox"/> System
<input checked="" type="checkbox"/> Purchase order number	<input type="checkbox"/> Client
<input checked="" type="checkbox"/> Item	<input type="checkbox"/> Order placement
<input checked="" type="checkbox"/> Schedule line	<input type="checkbox"/> Order confirmation from the supplier
<input checked="" type="checkbox"/> Delivery date	<input type="checkbox"/> Provisioning for dispatch
<input checked="" type="checkbox"/> Confirmed date	<input type="checkbox"/> 1st delivery date (S240R)
<input checked="" type="checkbox"/> Goods receipt	<input type="checkbox"/> Last order confirmation (S240C)
<input checked="" type="checkbox"/> Delivery reliability actual	<input type="checkbox"/> Supplier Suggested Date
<input checked="" type="checkbox"/> Delivery reliability actual %	<input type="checkbox"/> Purchase type

Close Apply Default Selection Save Layout

Actions Remove filter

STAT Add correction Mark as read Purchase order number

3203556500
3203570550

If you select one or more lines and go to Actions, two options are available.

Add correction: You can add a proposal for the selected lines to correct the delivery reliability.

Mark as read: When Siemens has processed the correction, you can mark it as read. After that, it will disappear as a notification.

Action Add correction:

With this action you can enter a correction code.

If Siemens accepts the correction, this position is measured as 100% delivery reliability.

If the proposal is rejected and the delivery is delivered out of tolerance, the position is unreliable.

Select Reason Code

Reason Code	Comment
Changeover settlement form (S240T)	
Maintenance MRP/Procurement (SMDPR)	
Goods Receipt Maintenance (RM, GR)	Keine MWLT verfügbar
Forwarding processing (FWDPF)	
Provision (MATPR)	
Missing shuttle packing (MSPR)	

Select date

28.04.2022

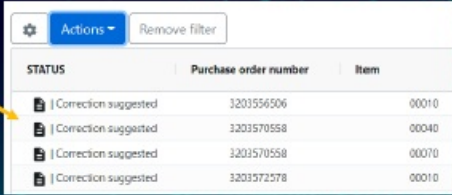
You can additionally define a date when the goods are likely to be ready for shipment or when they will arrive at Siemens. The date depends on the Incoterms.

- If you select one or more lines and go to Actions, two options are available.
- Add correction: You can add a proposal for the selected lines to correct the delivery reliability.
- Mark as read: When Siemens has processed the correction, you can mark it as read. After that, it will disappear as a notification.

PO Overview – Corrections

All statuses for corrections are visible in the "Status" column.

If you have submitted a proposal, it will get the status "Correction suggested".



STATUS	Purchase order number	Item
Correction suggested	3203556506	00010
Correction suggested	3203570558	00040
Correction suggested	3203570558	00070
Correction suggested	3203572578	00010

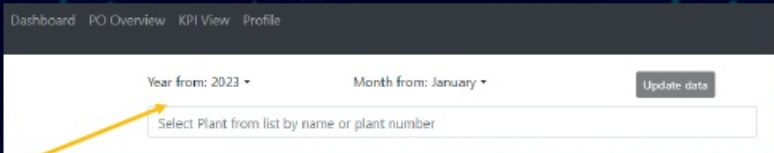
Other statuses are:

1. Marked as read / accepted
2. Marked as read / rejected

KPI View – Entry

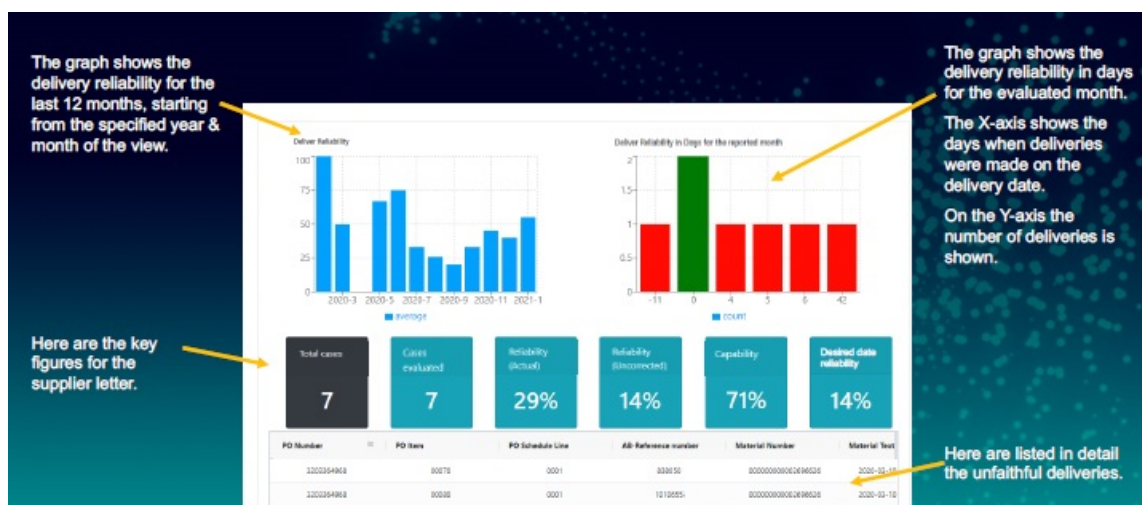
The KPI View shows the data of a plant that has released the supplier letter for one month.

To view the data, select a specific month and select the plant.



- Siemens can also continue to send the supplier letter via e-mail.
- Furthermore, after Siemens has approved the supplier letter, you will have the option to save the letter as a pdf in the KPI View.

KPI View – Data



Support

- If you have any problems or questions, please contact our mailbox:

- MO LOG Source sourcing-logistics.mobility@siemens.com
- For a clear assignment of the request we ask you to include "RTL – Topic " in the subject.

Documents / Resources



[SIEMENS RTL - Real Time Reliability](#) [pdf] User Guide
RTL Real Time Reliability, Time Reliability, Reliability

References

-  [Siemens ID - Authentication Error](#)
- [User Manual](#)

Manuals+, [Privacy Policy](#)

This website is an independent publication and is neither affiliated with nor endorsed by any of the trademark owners. The "Bluetooth®" word mark and logos are registered trademarks owned by Bluetooth SIG, Inc. The "Wi-Fi®" word mark and logos are registered trademarks owned by the Wi-Fi Alliance. Any use of these marks on this website does not imply any affiliation with or endorsement.