



SIEMENS NCCXP Series FireFinder Network Command Center Instruction Manual

[Home](#) » [SIEMENS](#) » SIEMENS NCCXP Series FireFinder Network Command Center Instruction Manual 

SIEMENS

FireFinder
Network Command Center
Graphics
Software Installation Manual

Contents

- [1 Introduction](#)
- [2 Minimum PC Requirements](#)
- [3 Software Installation](#)
- [4 NCC-2F Driver Installation](#)
- [5 Documents / Resources](#)
 - [5.1 References](#)
- [6 Related Posts](#)

Introduction

This manual describes the installation for Siemens NCC – Network Command Center
The Network Command Center Graphics product family comprises of two system series:

- The NCC-G Series, which includes the NCC-GL, NCC-1G, NCC-2G, NCC-3G and NCC-4G software packages.
- The NCCWAN Series, which includes the NCCWAN1G, NCCWAN2G, NCCWAN3G, NCCWAN4G, NCCWAN5G and NCCWAN6G, NCCWAN7G software packages.

These software packages, when operating in the appropriate UL 864 listed computer, form the FireFinder Network Command Center Graphics system (NCC-G).

For new installations, the NCC-G and NCCWAN software package includes the FireFinder CD-ROM program, software key, keyboard templates, the NCC manual, and this software installation manual.

Minimum PC Requirements

UL 864 9th Edition Listed Industrial Computer Requirements

Model	NCCXP Series
CPU	Pentium 4 2.8 GHz
O/S	Windows XP ® Professional
RAM	1 GB
Hard Disk	80 GB
Floppy	1.44M Bytes
SVGA LCD Monitor	22" or 42" {55.8 cm. -or- 106.7 cm.}
Touch Screen	22" or 42" {55.8 cm. -or- 106.7 cm.}
Serial Ports	2
Parallel Ports	2
Printer	PAL-1 (UL 864 9th Edition Listed parallel printer)
CD-ROM	R / W, DVD-ROM
USB	4 ports
Ethernet	(10110OBT & Gigabit LAN)

UL 864 9th Edition Listed Industrial Computer Requirements

Model	NCCW7I7 Series
O/S	Windows® 7; 64-bit software
O/S Processor	Intel 7
RAM	8GB DDR3
Hard Disk	250 GB SSD, 2 TB SATA
Floppy	1.44M Bytes
SVGA LCD Monitor	22" or 42" {55.8 cm. -or- 106.7 cm.}
Touch Screen	22" or 42" {55.8 cm. -or- 106.7 cm.}
Serial Ports	Six (6) RS-232; COM1-6
Parallel Ports	LPT1
Printer	PAL-1 (UL 864 9th Edition Listed parallel printer)
CD-ROM	DVD-RJW
USB	Two (2) ports (located behind locked door)
Graphics Card	On-board CPU card, Multi-monitor capable
Ethernet	(101100BT & Gigabit LAN)
Dimensions	16.8" [W] —x- 17.6" [D] —x- 7" [H] 42.6 cm. [w] —x- 44.7 cm. [o] -x- 17.7 cm. [H]
Weight	17.4 Lbs. (7893g.)

Software Installation

All SIEMENS FireFinder Network Command Center computers are preloaded with the NCC-G software in SIEMENS computer models SCD550, SCD550T, and NCCW7I7. Complete the following procedure to:

- re-install the software when necessary
- upgrade a system
- install the system on a computer that is not preconfigured from SIEMENS

1. Install the NCC-2F card driver in the PC (refer to Section 3.1).
2. Insert the CD into the CD drive. The installation will start with the Preparing to Install dialog. If the installation does not start automatically, click Run Setup in the AutoPlay window.

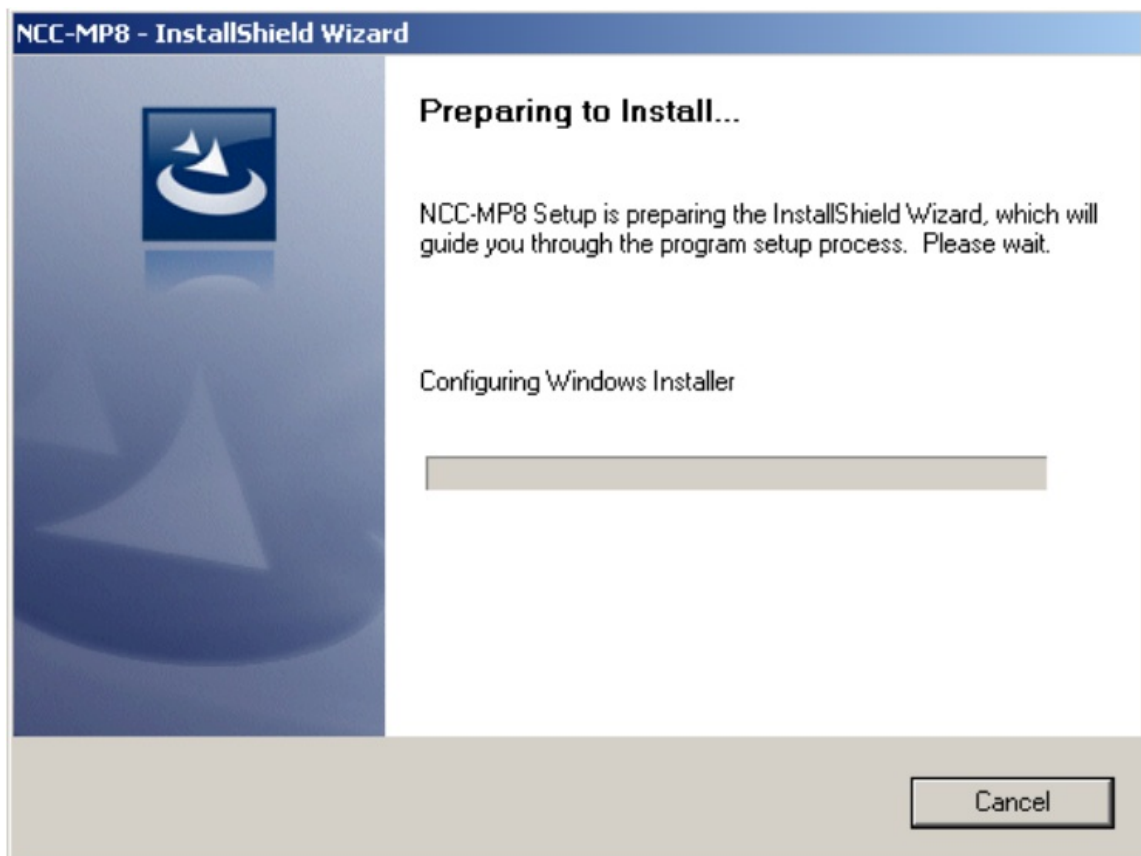


Figure 3-1 - Preparing to Install

3. The NCC will start with the installation for PostgreSQL and Acrobat Reader to the computer.

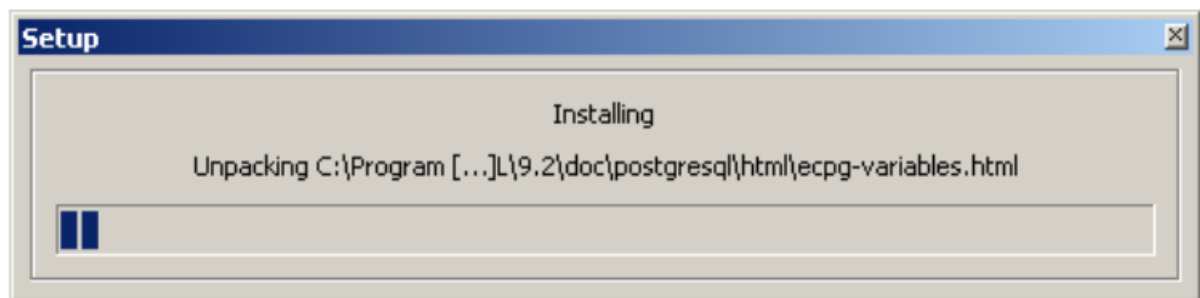


Figure 3-2 - Setup - PostgreSQL Installation

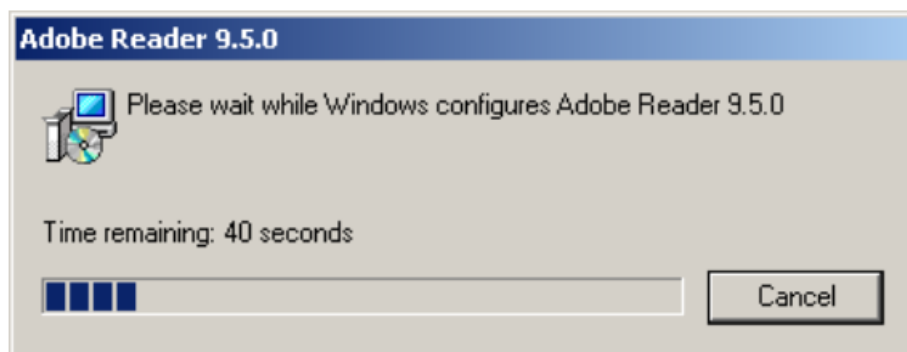


Figure 3-3 - Setup - Adobe Reader Installation

4. After the PostgreSQL and Acrobat Reader installation is completed, for Windows XP™ first time installation, the Microsoft IIS installation will start with the following screen. Note that this step may not show if IIS is available on the hard disk or if you are installing on Windows 7.

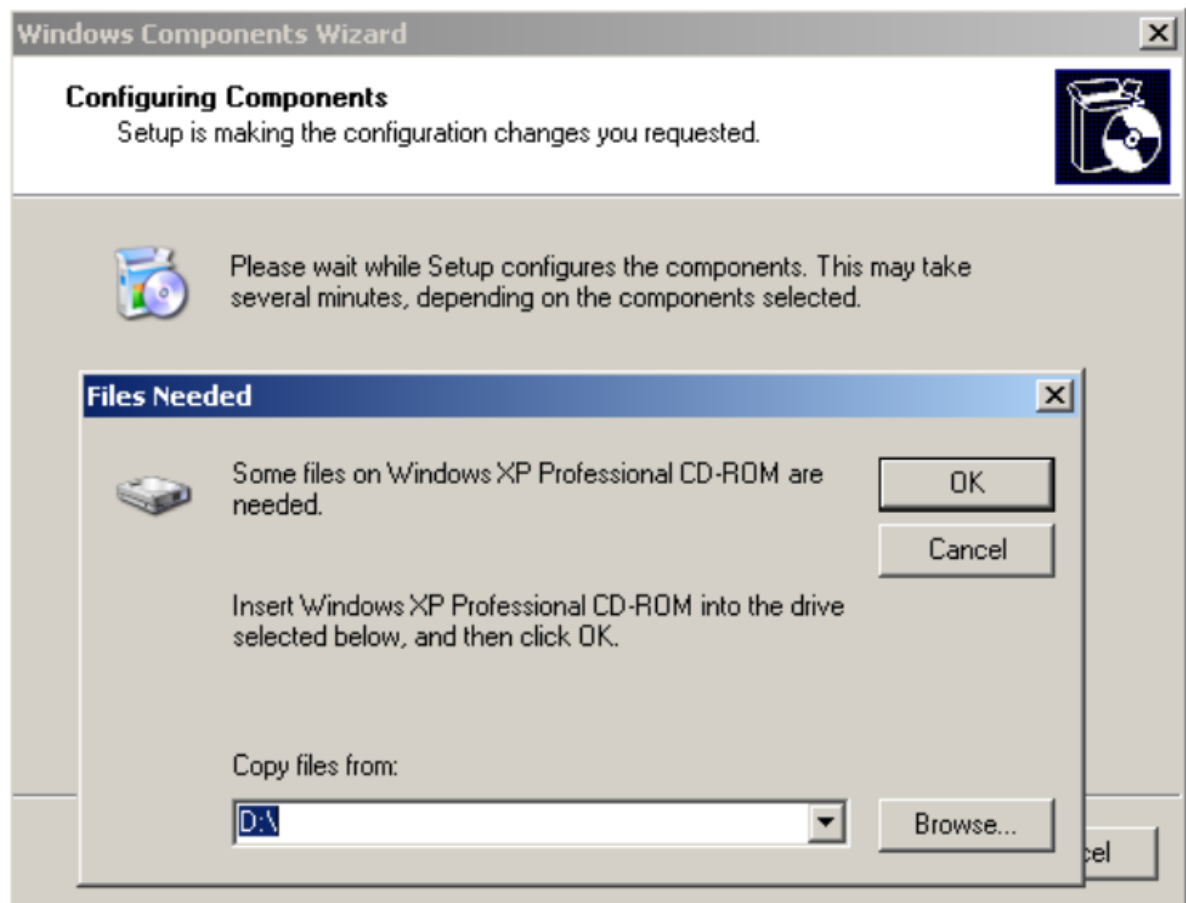


Figure 3-4 - Microsoft IIS Opening Screen

5. Remove the NCC CD from the CD-ROM drive and insert the Windows XP™ CD. Browse the Windows XP™ CD and select the I386 folder. Click OK.

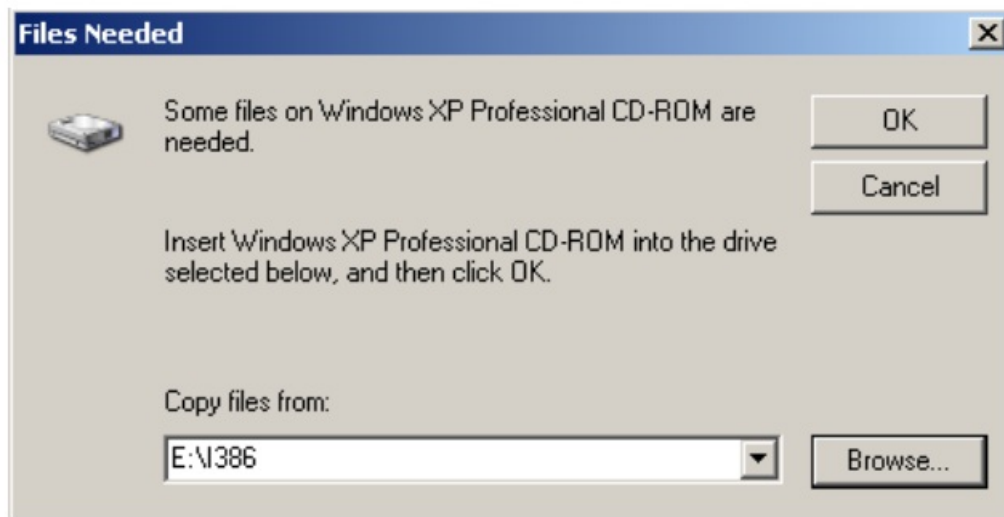


Figure 3-5 - Windows XP - Files Needed



Figure 3-6 - Microsoft Windows XP™ Welcome Screen

6. If the Welcome to Microsoft Windows XP™ screen appears, click Exit to close the window.
7. After the IIS installation is completed, the NCC installation will start with the following screen:

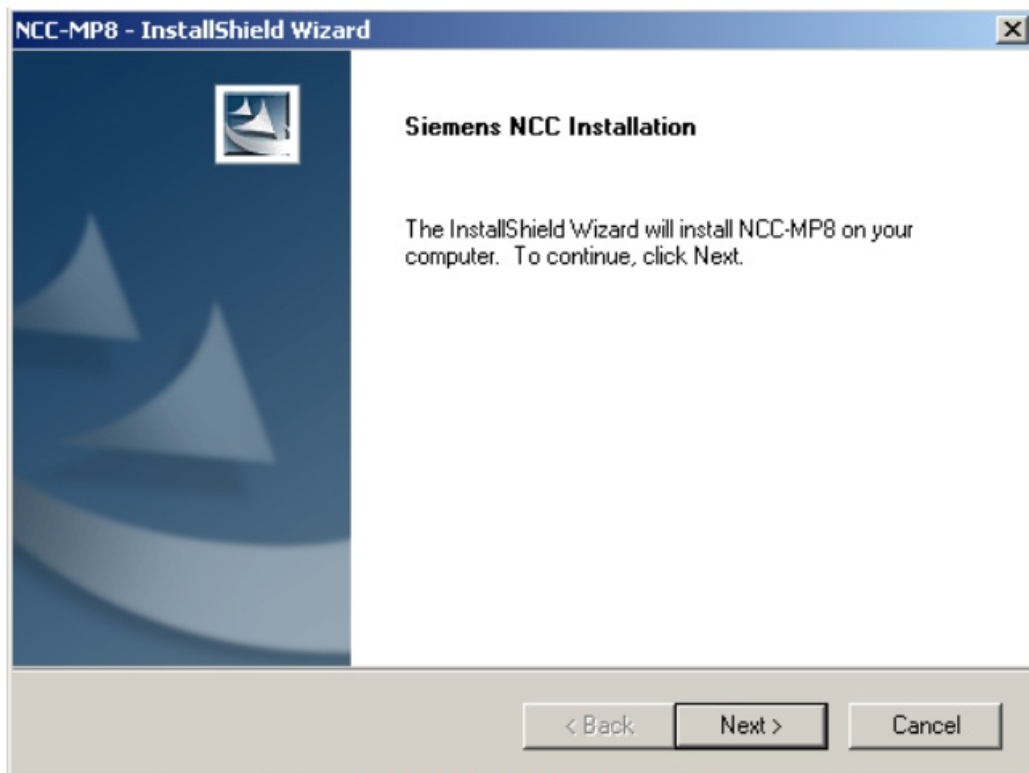


Figure 3-7 - NCC MP Installation Opening Screen

8. Click Next> to continue the installation process. The Setup Type screen will appear.

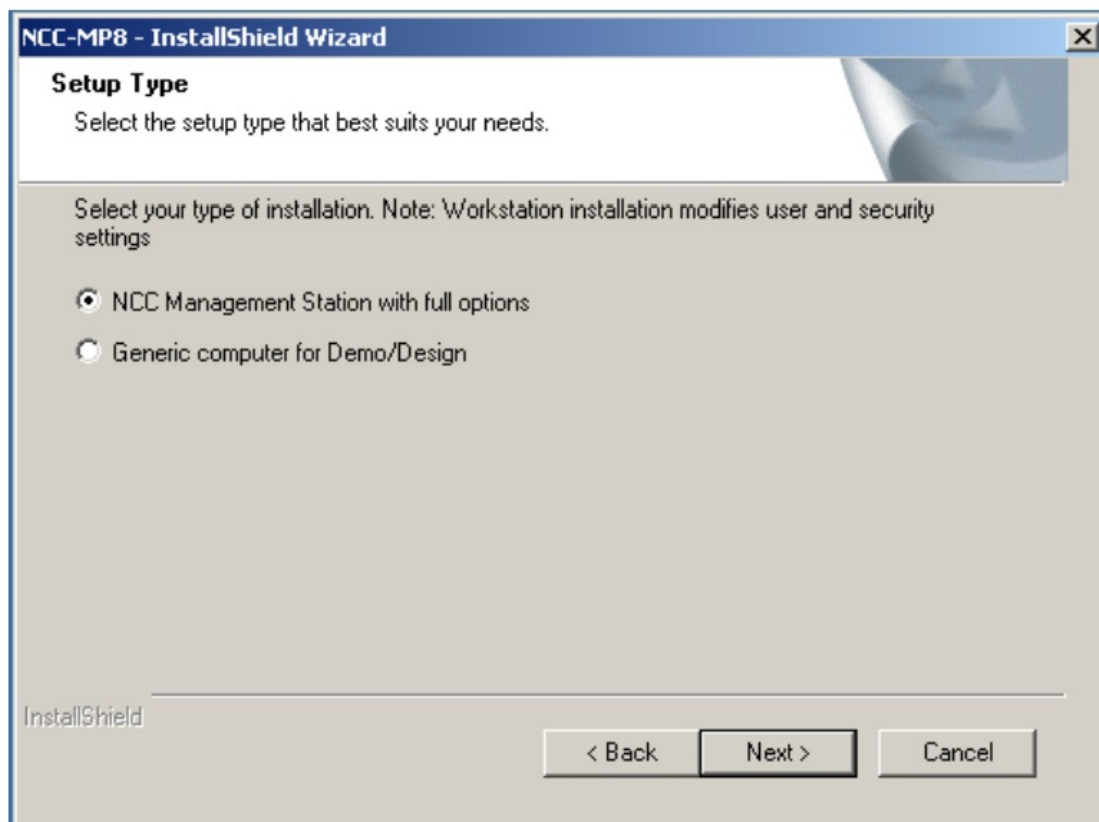


Figure 3-8 - NCC Setup Type

9. Select NCC Management Station with full options to install the complete NCC Management Station software to the computer. Select Generic computer for Demo/Design to install the NCC demo to a laptop for offline editing, configuration, or demonstration. A confirmation dialog will appear.

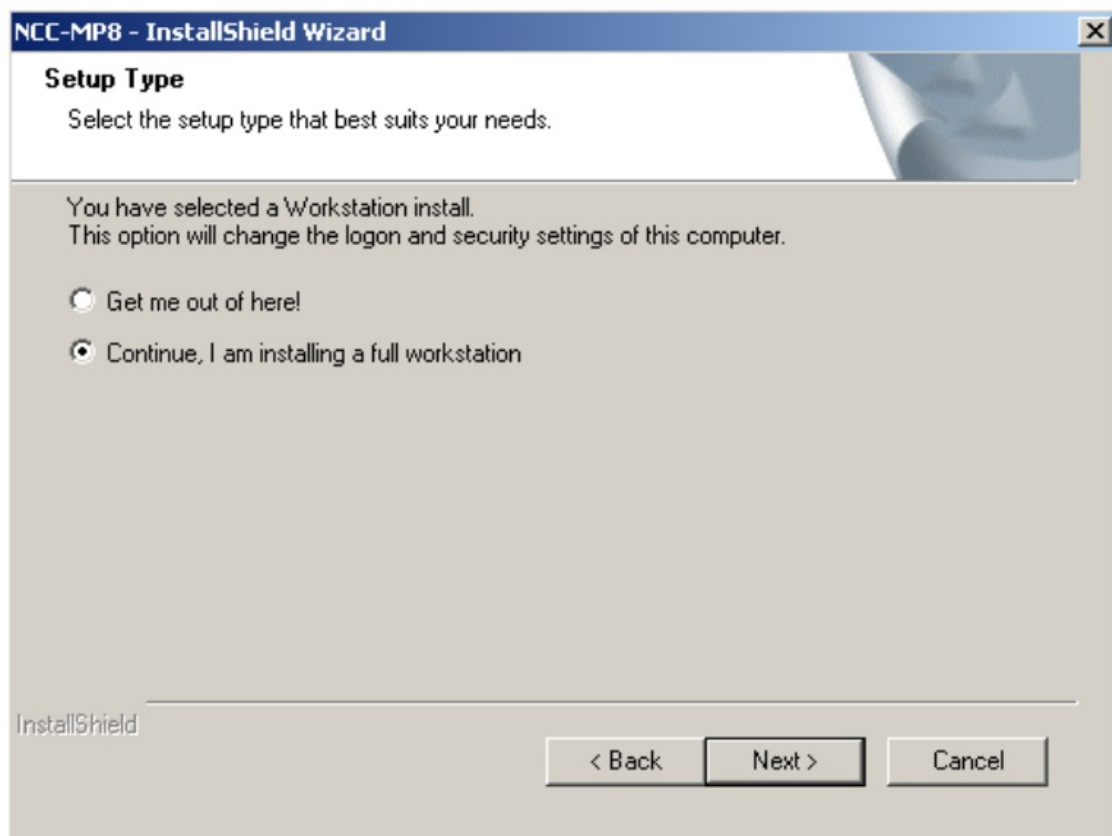


Figure 3-9 - NCC Setup Type

10. The option for the complete installation will change the logon and security settings of the computer. Select the Continue, I am installing a full workstation option to confirm the choice for the full installation. Select Get me out of here or click Back to change the installation choice.

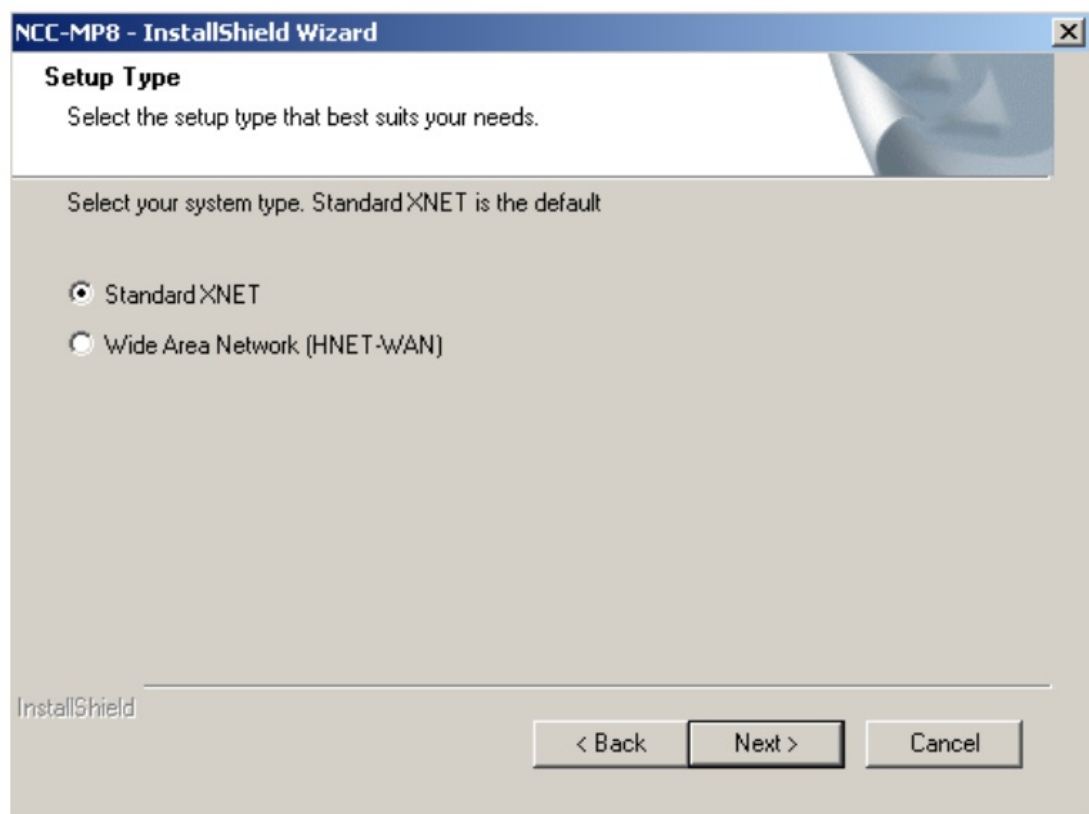


Figure 3-10 - Setup Type - Select system type

11. Select the type of NCC system to be installed. Click Next> to continue.

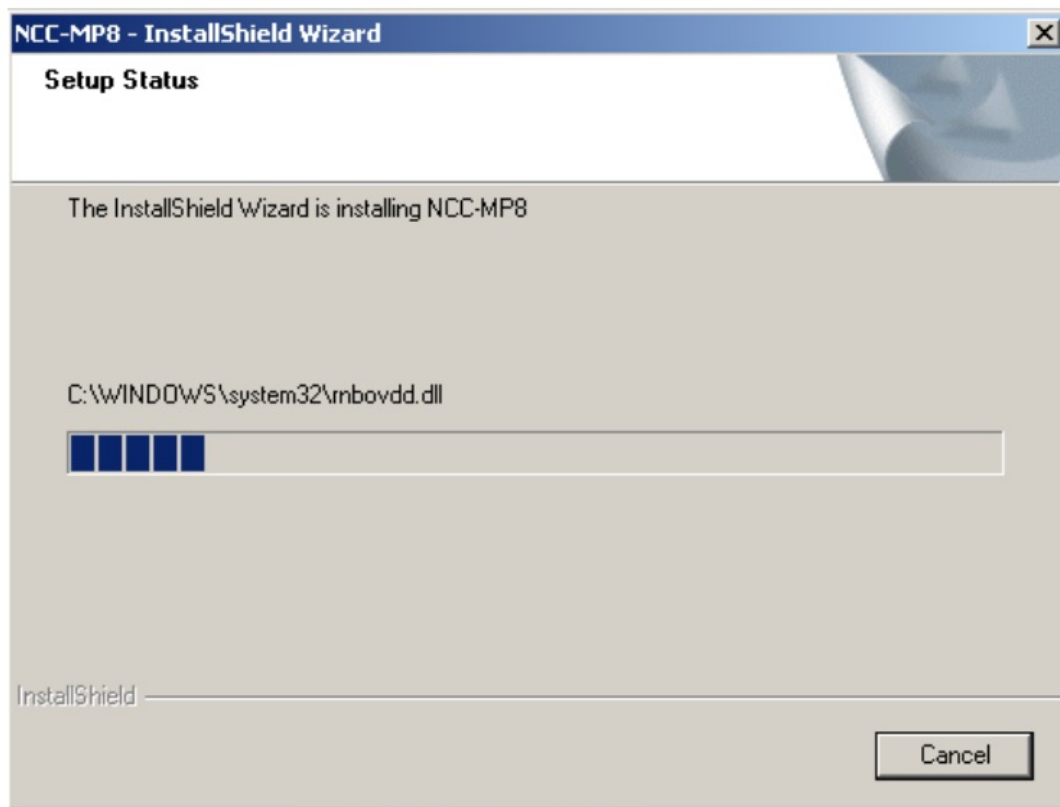


Figure 3-11 - Setup Status

12. The installer will install the NCC software to the computer. By default, the NCC files will be installed in a folder named NCC2 when installation is completed.

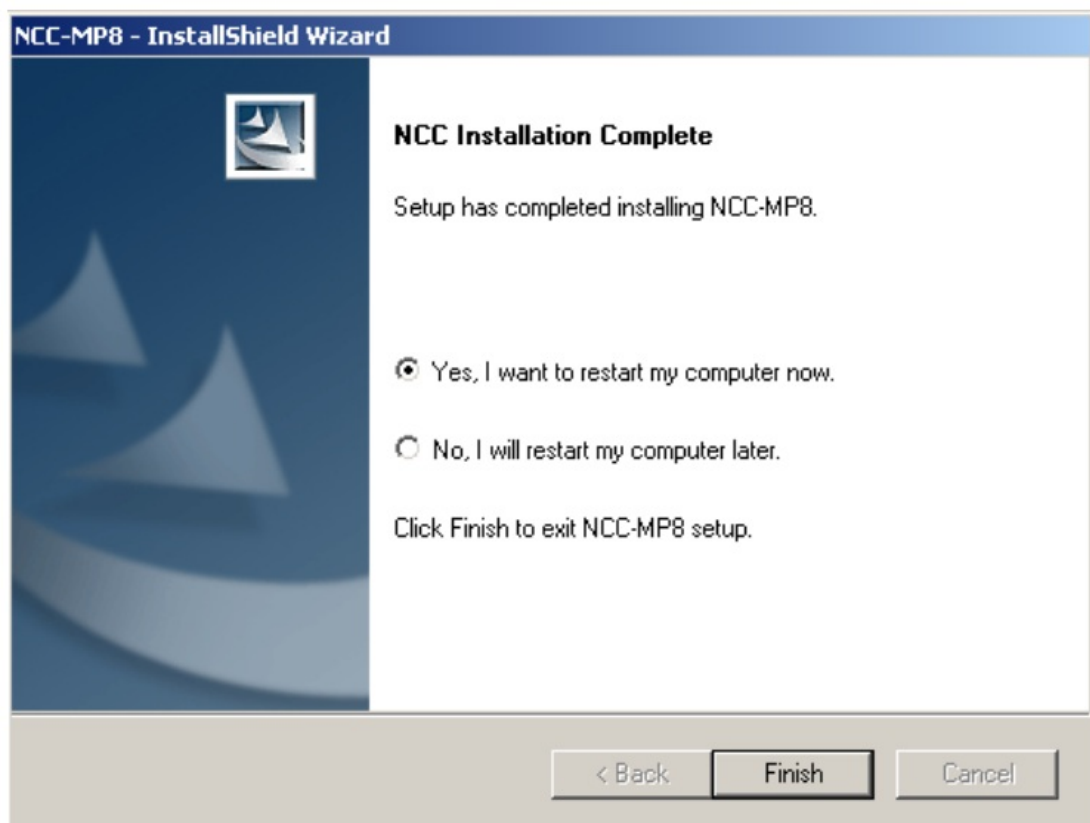


Figure 3-12 - Setup Completed

13. A reboot is required to complete the installation. Select Yes, I want to restart my computer now. Click Finish to restart the PC.
14. After the computer reboots, at the Windows logon dialog, enter the following to log on to Windows and start the NCC:
Username: firefinder

Password: firefinder

15. If this is a first time NCC installation, a prompt for NCC Database Initialization will be displayed. This is fine because there is currently no NCC configuration in the PC. Click OK to continue.

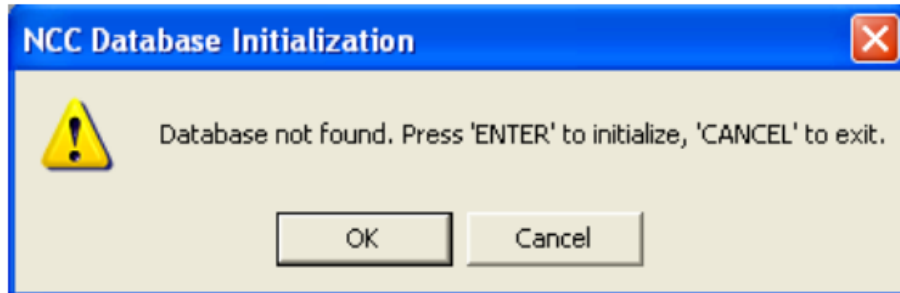


Figure 3-13 – NCC Database Initialization warning

16. If the NCC key is not installed prior to the software installation, a prompt for Software Key Missing will be displayed. Plug in your Software Key. You will have five chances to install the Software Key before continuing with the NCC installation. If the installation is for testing purposes, click OK to continue and choose the default type of operation. Without the NCC key, the software will run in Emergency Mode and a warning will appear until a valid NCC key is installed.

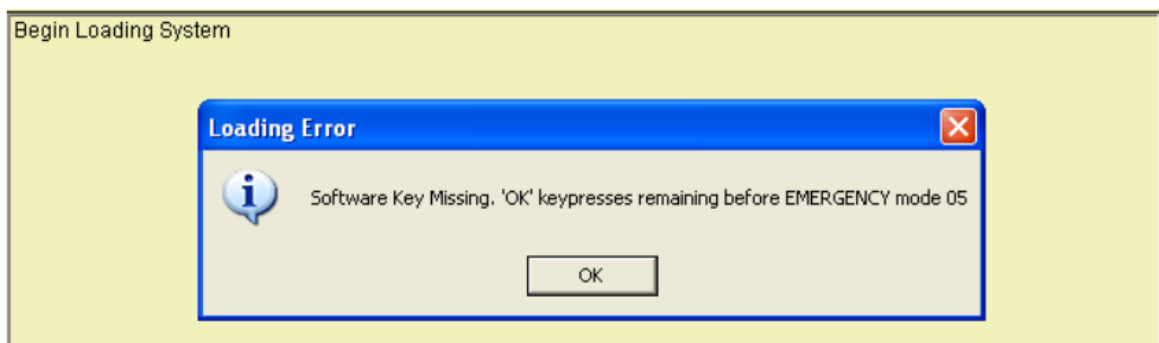


Figure 3-14 - Software Key Missing warning



Figure 3-15 - Security Key Error Default

17. If the NCC Software Key has been installed, the installation will proceed with the site configuration setup.



Figure 3-16 - NCC-GL Installation And Setup

18. Click Next>> to continue with the site setup.

The image shows a window titled "NCC Network Node and Module Address". Inside, the title "NCC-GL System" is centered. Below it, a text block explains: "Enter the node number of this NCC-GL and the MXL[IQ], typically 2 and 1. The node numbers must be different. You must also enter the NCC-GL module number that was assigned in the CSGM. These values can be changed later in the network setup dialog." The window is divided into two sections: "NCC Settings" and "MXL Settings". In the "NCC Settings" section, there is a checkbox labeled "Use Nim Interface" which is unchecked. Below it are three fields: "Module Number:" with a spinner box set to 3, "Node Number:" with a spinner box set to 2, and "Node Button Label:" with a text box containing "Undefined". The "MXL Settings" section has a "Type" label above two radio buttons, "MXL" (which is selected) and "XLS". Below these are two more fields: "Node Number:" with a spinner box set to 1, and "Node Button Label:" with a text box containing "Undefined". At the bottom center of the window is a "Done" button.

Figure 3-17 - NCC-GL Network Node and Module Address

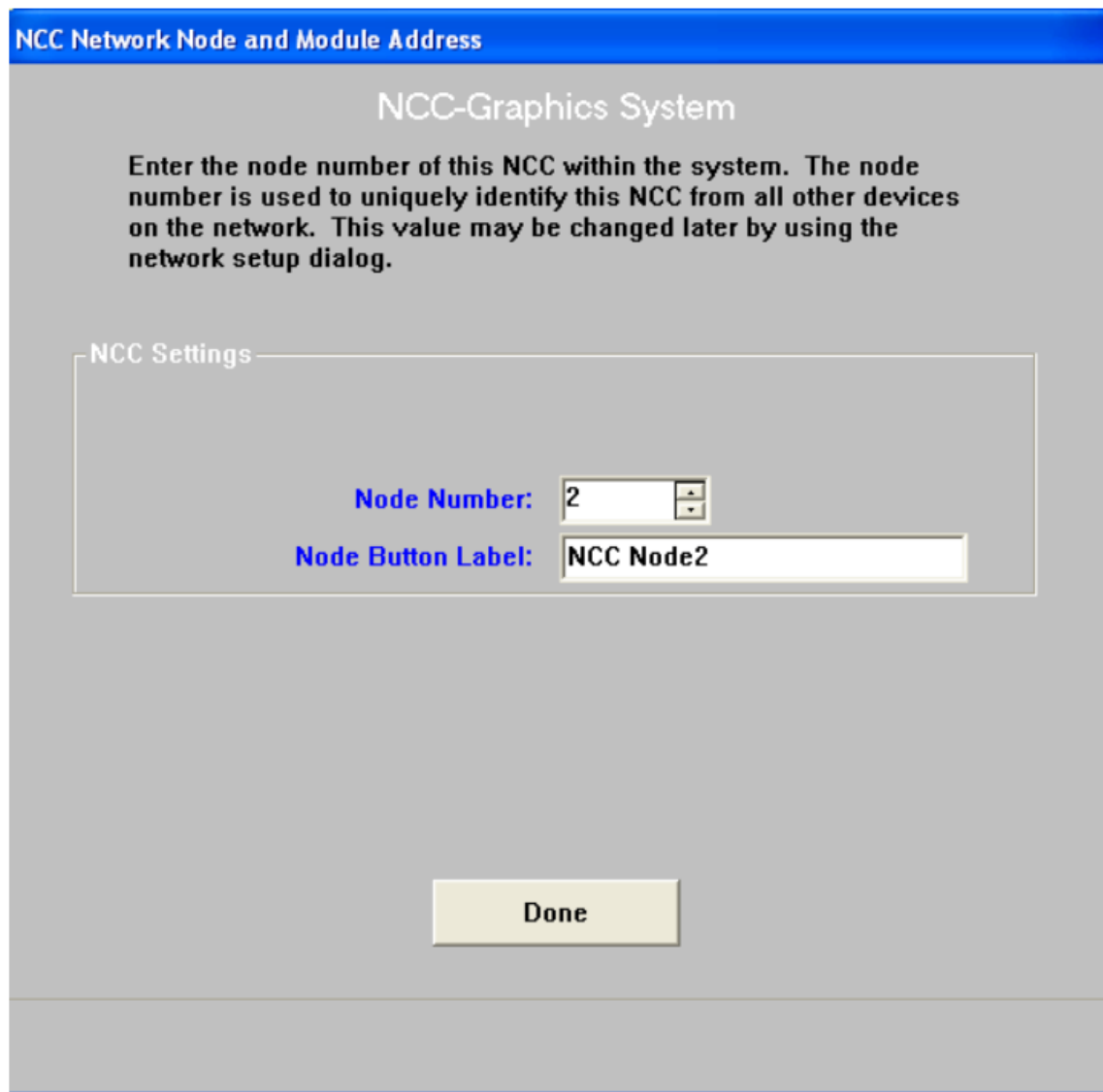


Figure 3-18 - NCC Network Node and Module Address

18. The Use NIM Interface option is used with the NIM-1W/R to extend the NCC-GL topography. This option allows the NCC-GL to be used on a system with multiple nodes, however, the NCC-GL will only monitor and control one node. In order for this option to operate, a NIM-1W/R card must be installed in the node which the NCC-GL will be monitoring and controlling. The proper module and node number for the NIM-1R must agree with the programming in the MMB for the NCC-GL module.

Enter the Node Number assignment for the NCC-G/GL system and a Node Button label. These values can be changed later in the system dialog box.

19. If you do not complete this information, the following dialog box appears (as applicable) and you cannot continue with the installation.

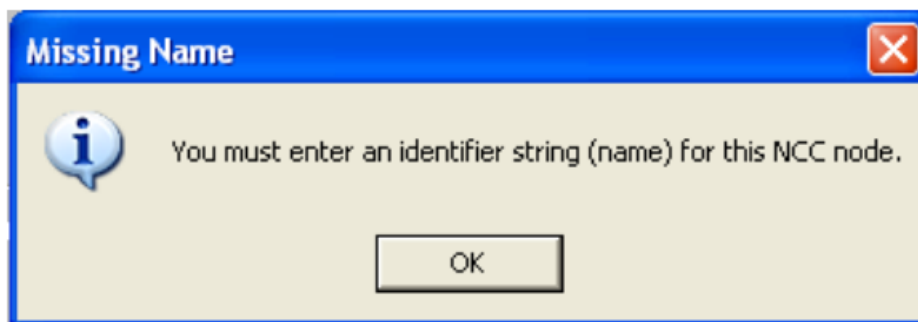


Figure 3-19 - Missing Node Button Label error

20. Once the node number assignment and label have been accepted, the following screen appears.

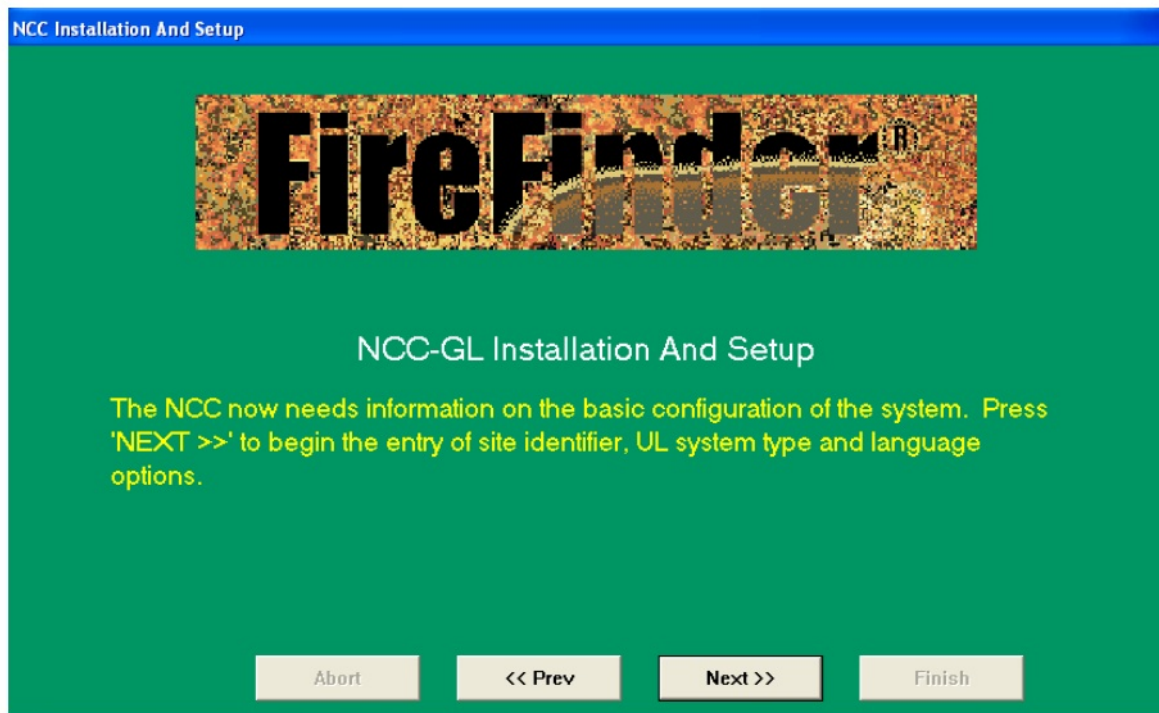


Figure 3-20 – NCC-GL Installation and Setup – Continue to Site Information Setup

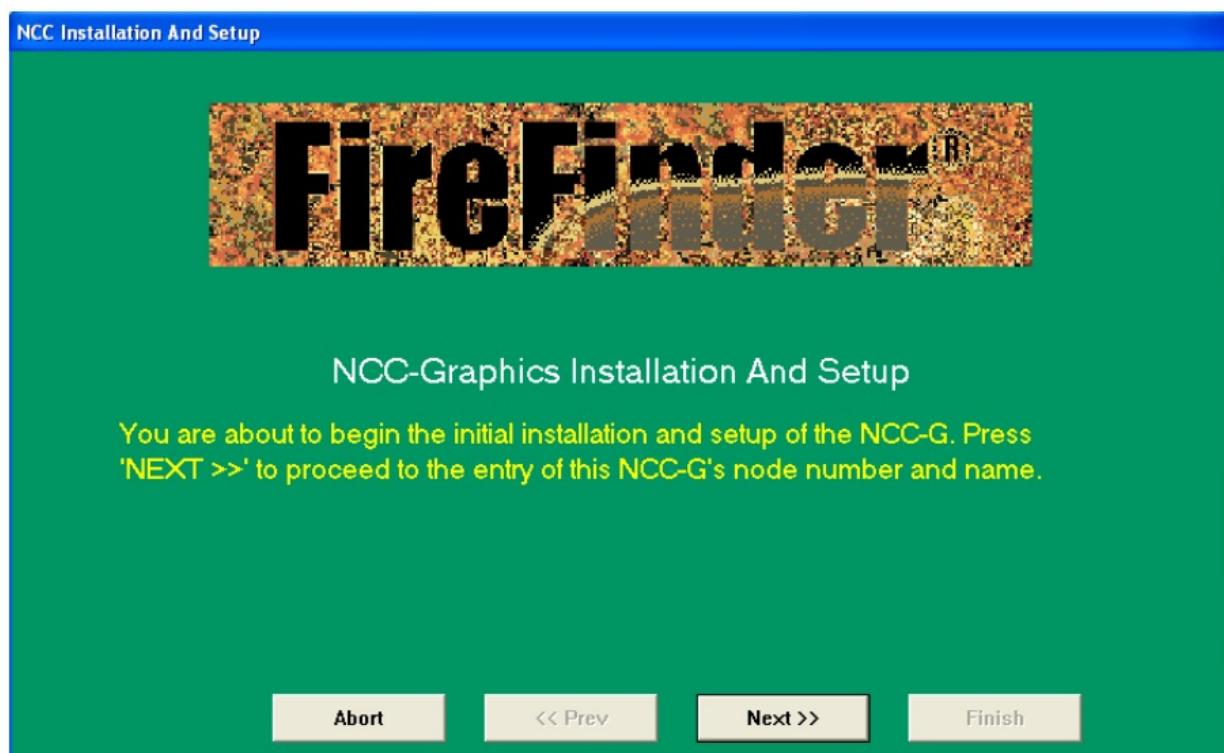


Figure 3-21 – NCC-Graphics Installation and Setup – Continue to Site Information Setup

21. Press NEXT>> to continue with the basic system configuration. The following screen appears.

Site Information

System Identification

Serial #

Command Seq #

☒ **UL System**

Foreign Country Support

☐ **Enable Support**

Country

Language

☐ **Default**

Done

Figure 3-22 - NCC Site Information

System Identification: Enter the name of the installed site (up to 52 characters long). This is a required field. If System Identification is left blank, the following dialog box appears:

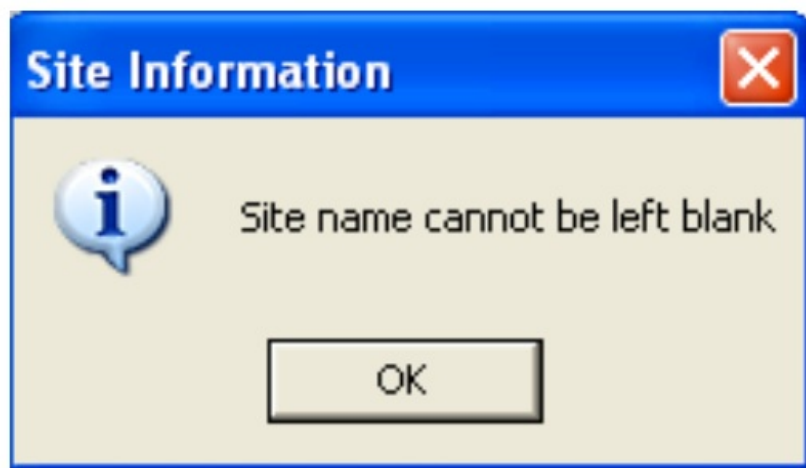


Figure 3-23 – NCC-G Missing Site Information error

- Serial #: The number displayed is the version of the NCC-G software.
- Select the correct UL system configuration.
- o UL System: Select the NFPA 72 mode of operation. The possible selections are:
 - NFPA 72 Local – Campus
 - NFPA 72 Local – Highrise
 - NFPA 72 Proprietary
- o NOTE: All NCCs on a network system need to be set to the same UL system setting.
- Command Seq #: The number displayed is the number of commands executed since the system was

installed.

→ Foreign Language Support: The default country and language setting is USA and English. If the site location is in Canada, select the check box to Enable Support for Foreign Country support and change the country and language.

22. After clicking DONE in the site information section, the following screen appears, as applicable.



Figure 3-24 - NCC-G/NCCWAN and NCC-GL Installation Completion Screens

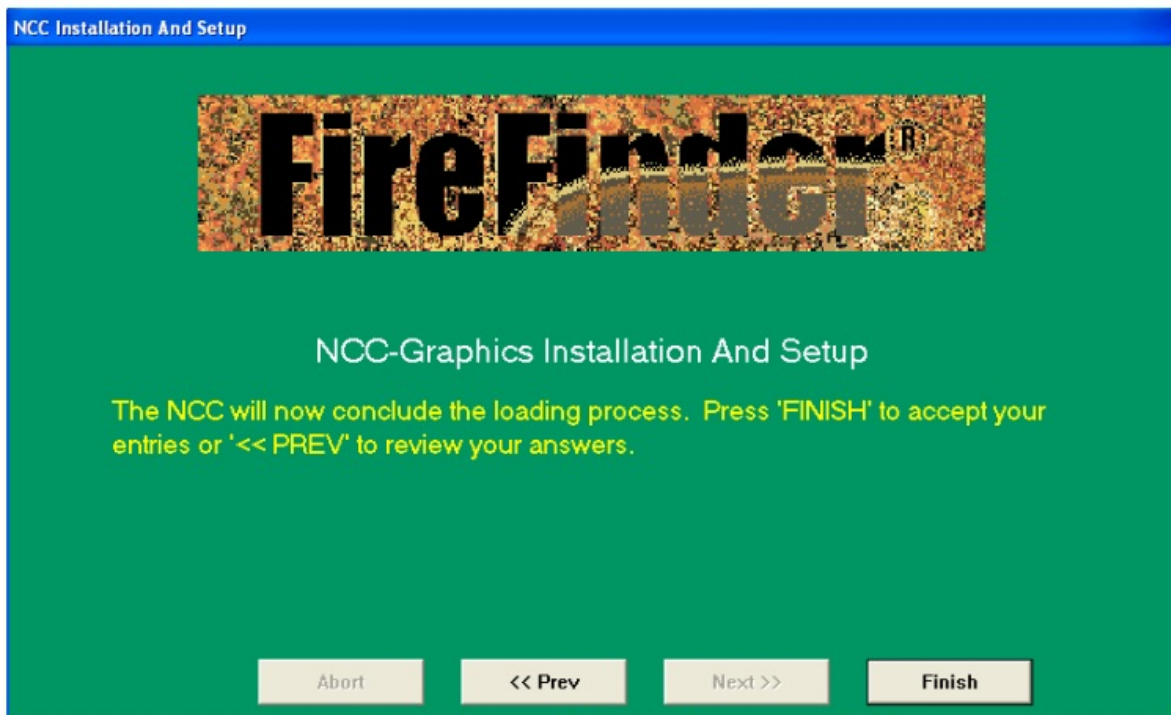


Figure 3-25 - NCC-Graphics Installation And Setup Completion Screens

23. If you want to review your entries, click <<Prev. Click Finish if you want to save your entries. This completes the NCC software installation.

3.1 NCC-2F Driver Installation

Refer to Section 4 for detailed steps on NCC-2F driver installation instruction. An error will be displayed if the NCC-2F driver has not been installed.

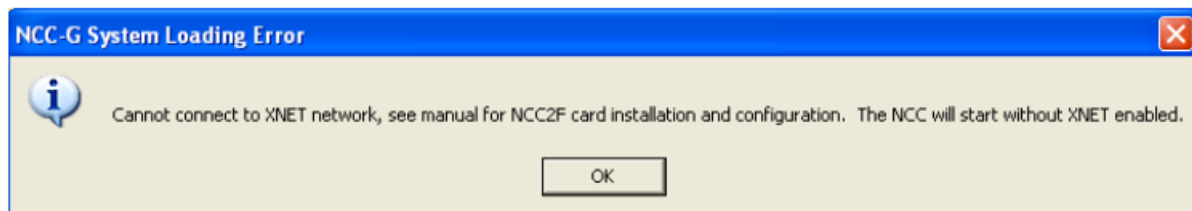


Figure 3-26 - NCC-G System Loading Error

3.2 Un-configured NCC-2F Cards

1. On a new installation, or if the NCC-2F card is replaced, the Configure Network Hardware setup screen will be displayed during boot up.

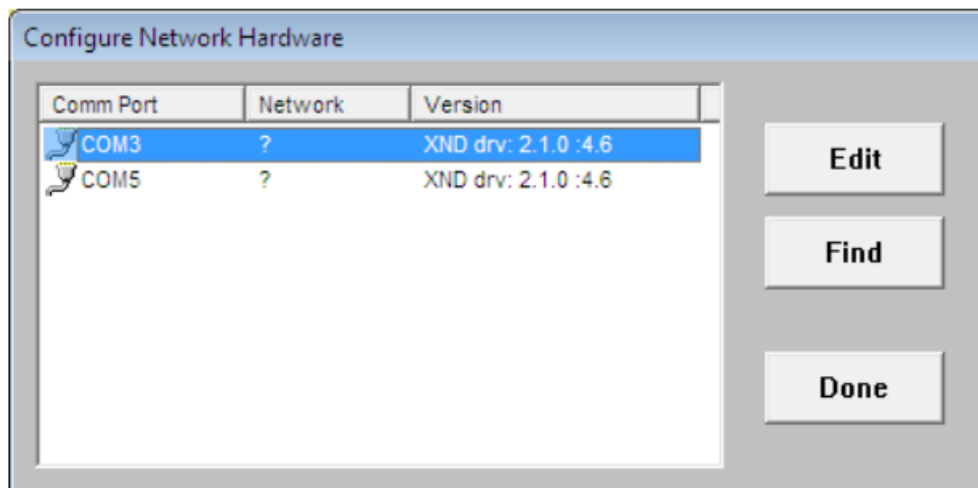


Figure 3-27 - NCC-2F Configure Network Hardware

2. Select a port and click Find to assign a network to this port. Notice, at the back of the PC, the flashing activity LEDs on the selected card. Click Edit to display or change the card's assigned network type (XNET or HNET) properties.

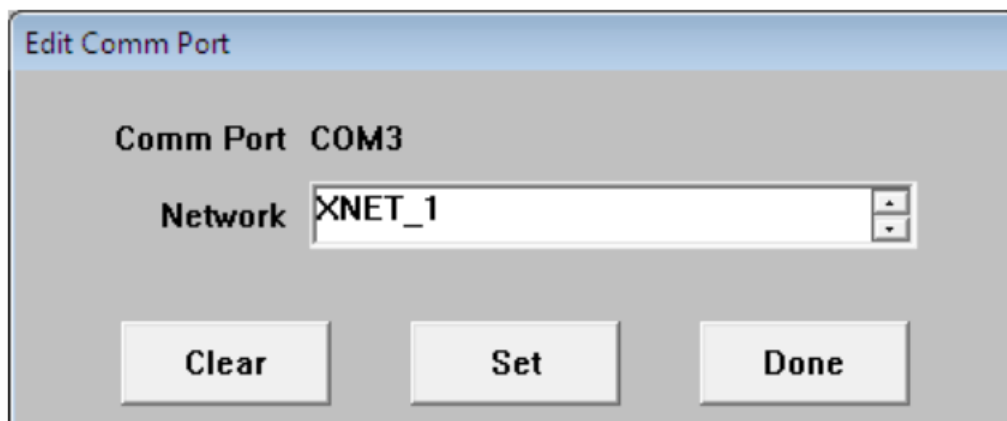


Figure 3-28 - NCC-2F Configure Network Hardware – Edit Comm Port

3. The Network field will select between XNET_1 and HNET_1. When the desired type is showing, click Set and then click Done to complete the operation. You will be asked to confirm your selection. If it is desired to un-configure a port, click Clear and then click Done.
4. After all the required hardware is assigned, the Network Hardware screen should resemble the following.

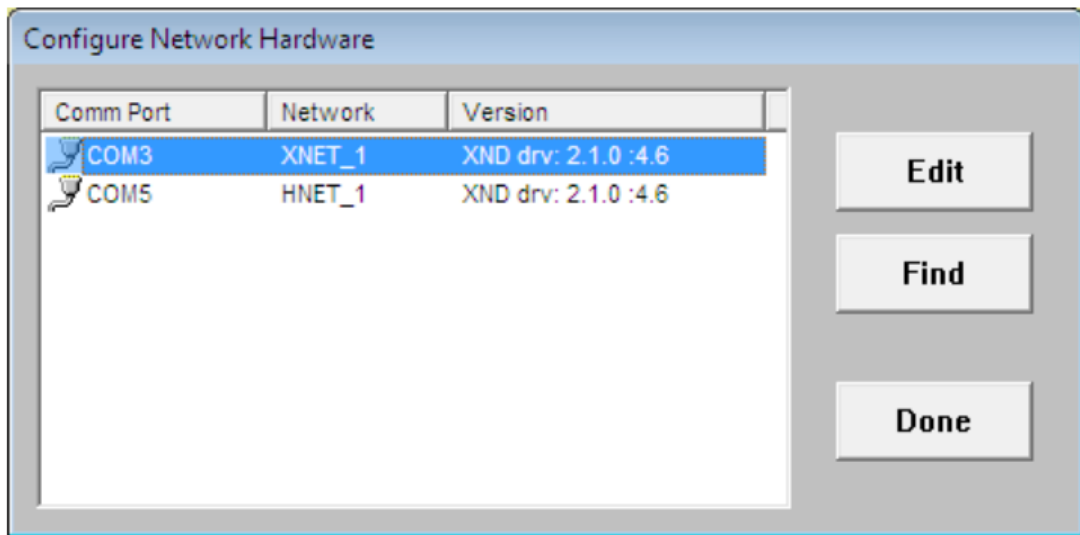


Figure 3-29 - NCC-2F Configure Network Hardware - Assign Comm Port

- Now click Done and the normal boot process will continue. If a change is required in the future, this setup dialog can be accessed by navigating to More > Setup > Network > Net Hardware.

3.3 Printer Installation

- For printer installation, refer to page 2-26 in the FireFinder Network Command Center Graphics Operation, Installation, and Maintenance Manual.

NCC-2F Driver Installation

The NCC-2F is a PCI-compliant network card used with the NCC and NCC WAN systems.

The NCC-2F allows the user to interface MXL and XLS systems over XNET and to connect to WAN components using HNET. The NCC-2F provides the NCC with an RS-485 supervised network.

The module fits in any available PCI 5V-compliant slot. The card is keyed so that it will only fit in the appropriate PCI slot. The module comes preinstalled in the NCC. When a PC with an NCC-2F card is first started, the card will be detected in Windows, and the user will be prompted to install the drivers. The drivers are on the Firefinder NT (P/N 316-099108) and the Firefinder NCC NT WAN (P/N 316-048853) installation disks. Load the appropriate disk (both disks have the same drivers) in the CD-ROM drive, and follow the instructions for installing the drivers. Each card will automatically prompt the user for drivers. There are three drivers to install: one for the PCI card UART, and two for the PCI communication ports. The outlined installation steps are repeated three times.

After the first card is installed, the next card will prompt the user for its drivers. Repeat the following steps for the second card. When all is complete, refer to the Device Manger to check the COM port designations, and view any installation issues. Use the following step to perform the procedure.

4.1 Installing NCC-2F Driver on Windows XP

- When the NCC-2F is first installed, Windows will detect the new hardware. At this point, select the No, not at this time option and click Next>.



Figure 4-1 - Found New Hardware Wizard

2. Select Install from a list or specific location (Advanced) and then click Next>.



Figure 4-2 - Install from a list or specific location

3. Select Browse and navigate to the CD-ROM and locate the OXUART_v512_DRIVERS folder. On the Firefinder NCC, this location is:
D:\drivers\NCC2F_DRIVERS\OXUART_v512_Drivers.
NOTE: If the CD-ROM drive is not D, substitute the proper drive letter for your PC.

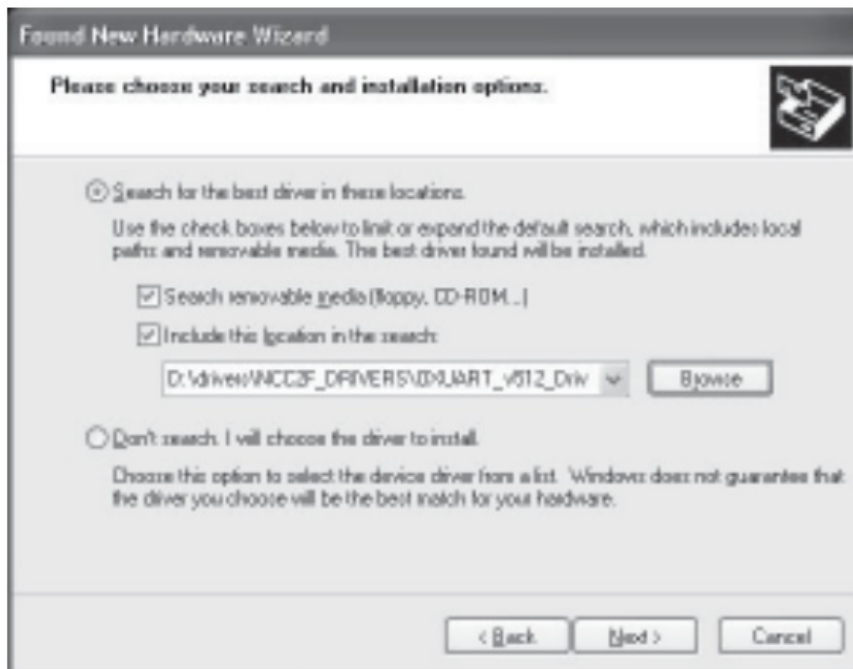


Figure 4-3 - Please choose your search and installation options

4. After you highlight the folder, click OK to proceed. Now that the path is populated, click Next>. Windows will install the appropriate drivers.
5. When you see the following Hardware Installation warning, click Continue Anyway.

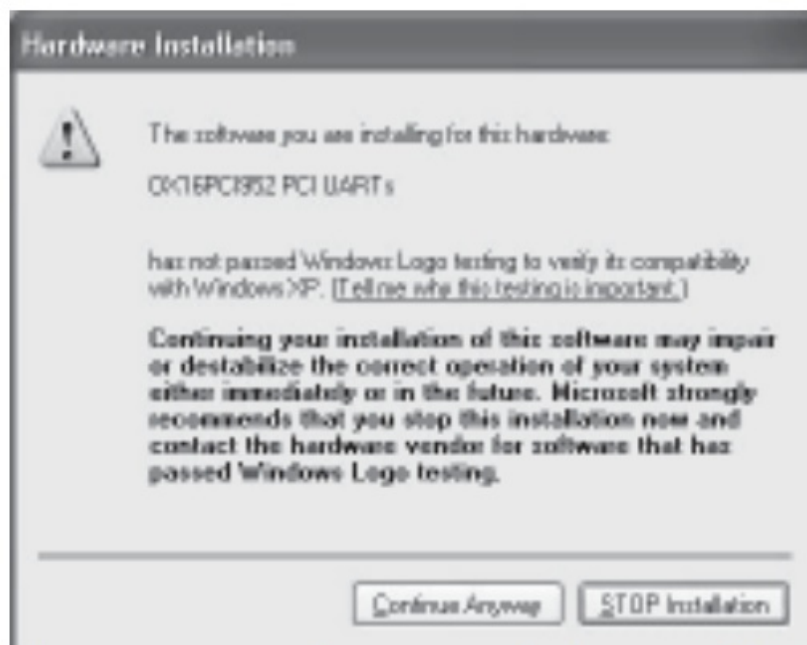


Figure 4-4 - Hardware Installation warning

6. The Windows XP Hardware Wizard will install the drivers as shown in the following image.

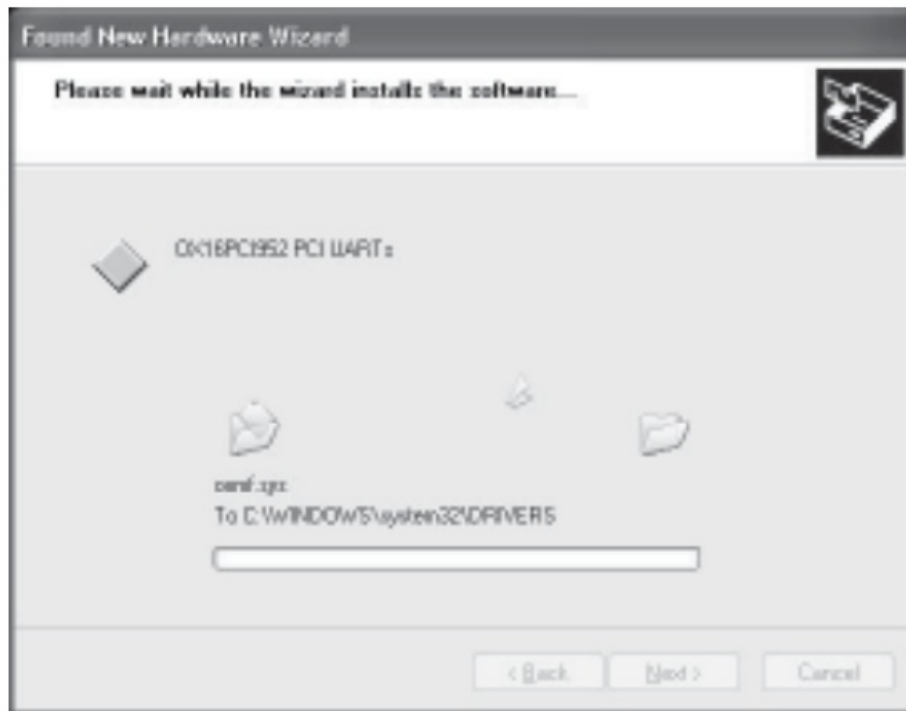


Figure 4-5 - Installation of drivers

7. Once the drivers are successfully installed, the following message will be displayed. Click Finish.

NOTE: Windows will prompt the user to install the drivers for the serial port.

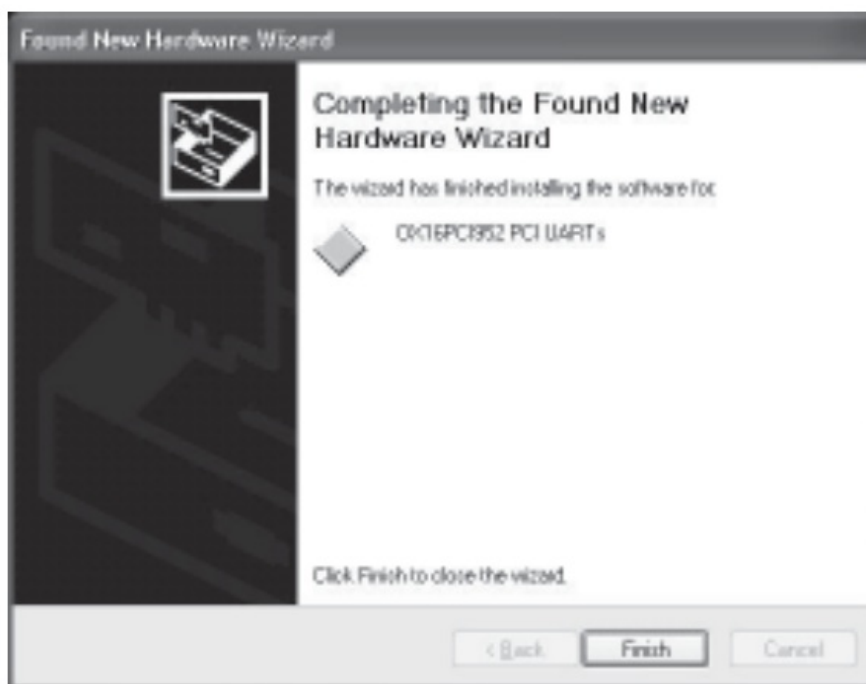


Figure 4-6 - Completing the Found New Hardware Wizard

8. On the Welcome to the Found New Hardware Wizard window, select Install from a specific location [Advance].

NOTE: Windows will use the first available COM port for communication.



Figure 4-7 - Welcome to the Found New Hardware Wizard

9. Select Next> and search for the CD-ROM drive where the OXUART_v512_DRIVERS folder is located. On the Firefinder NCC, this location is:
D:\drivers\NCC2F_DRIVERS\OXUART_v512_Drivers

NOTE: If the CD-ROM is not D, substitute the proper driver letter for your PC.

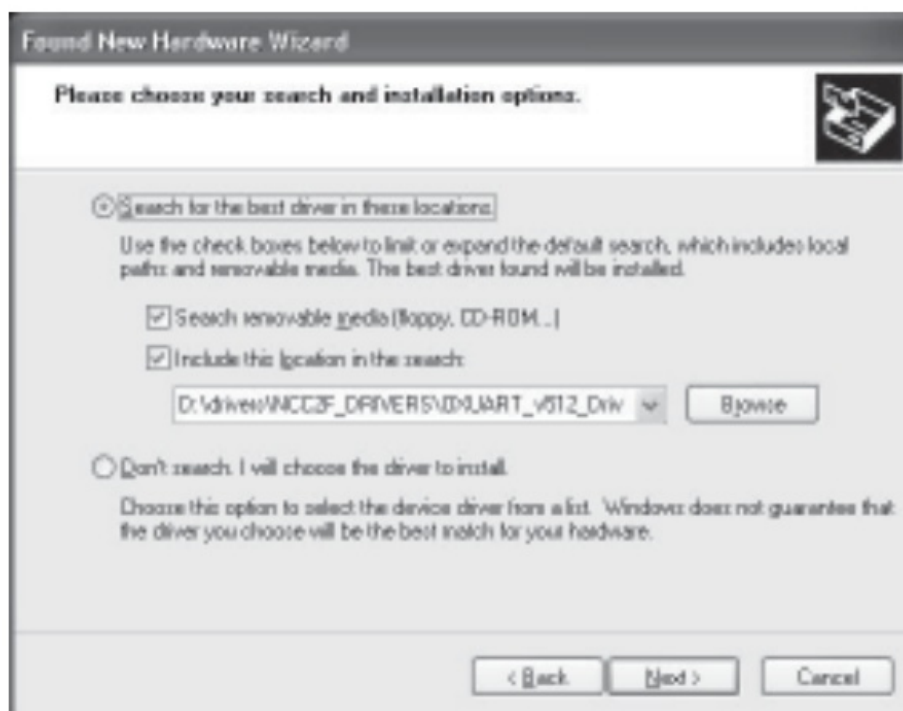


Figure 4-8 - Please choose your search and installation options

10. After you highlight the folder, click OK to proceed. Now that the path is populated, click Next>. Windows will install the appropriate drivers.
11. When you see the following Hardware Installation warning, click Continue Anyway.

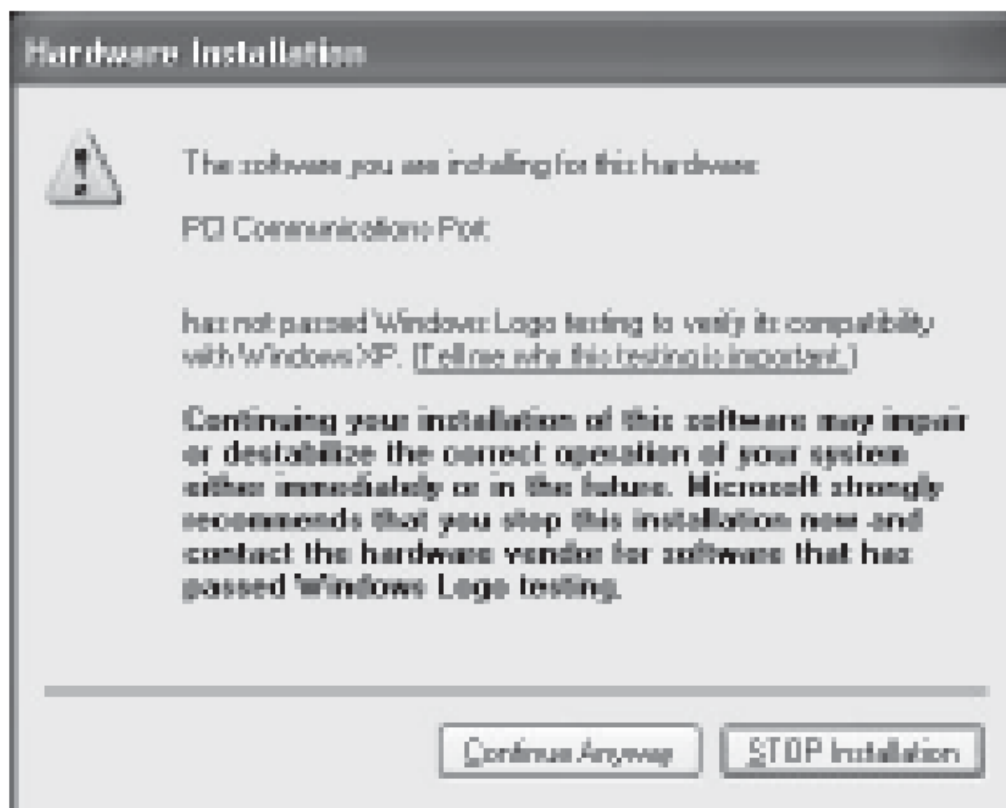


Figure 4-9 - Hardware Installation warning

12. Once the drivers are successfully installed, the following message will be displayed.



Figure 4-10 - Completing the Found New Hardware Wizard

13. Click Finish.

NOTE: Windows will prompt the user to install the drivers for the additional PCI Communications Port.



Figure 4-11 - Welcome to the Found New Hardware Wizard

14. Select Install from a list or specific location [Advance].
15. Select Next> and search for the CD-ROM driver where the OXUART_v512_DRIVERS folder is located. On the Firefinder NCC Install CD, this location is:
D:\drivers\NCC2F_DRIVERS\OXUART_v512_Drivers
NOTE: If the drive is not D, substitute the proper drive letter for your PC.
16. Highlight the folder and click OK to proceed. Once the path is populated in the field, click Next>. Windows will install the appropriate drivers.
17. On the Hardware Installation warning message, click Continue Anyway.

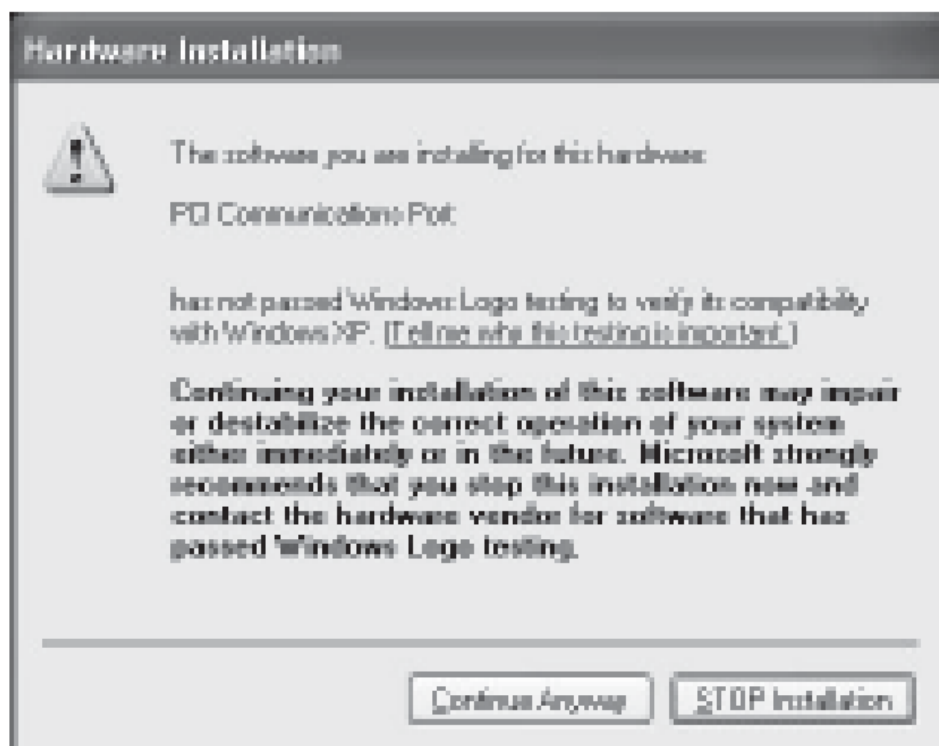


Figure 4-12 - Hardware Installation warning

18. Once the drivers are successfully installed, the following message will be displayed. Click Finish.

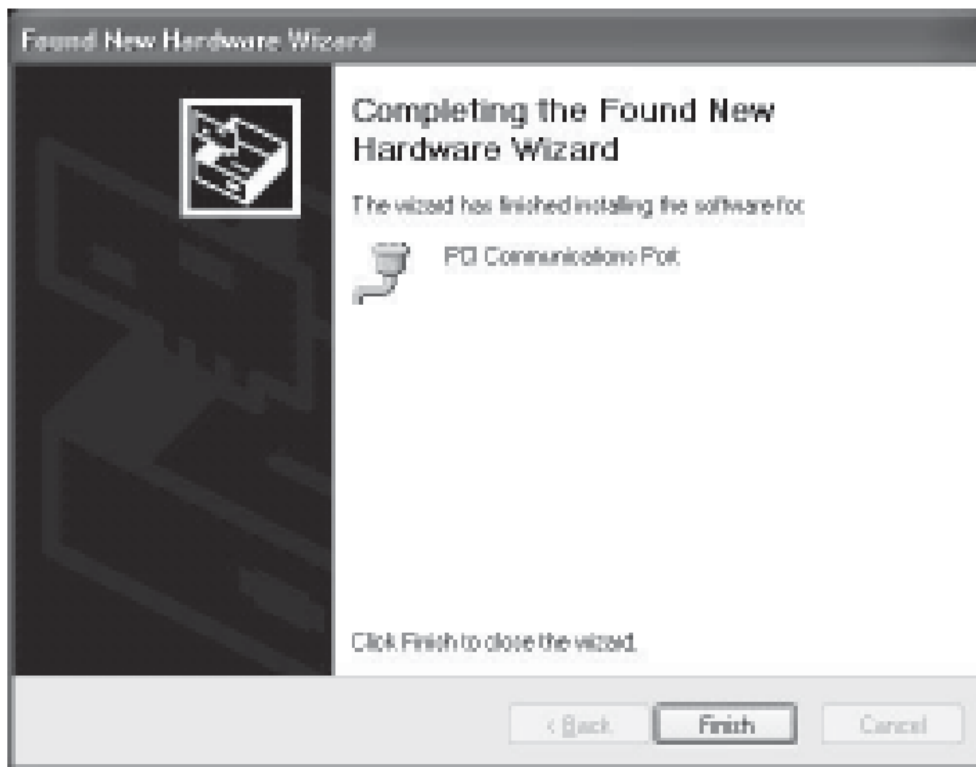


Figure 4-13 - Completing the Found New Hardware Wizard

19. To verify which COM ports were installed and to check that there are no issues, right click on My Computer on the desktop and select Properties.
20. Then click the Hardware tab.



Figure 4-14 - System Properties

21. Click Device Manager.

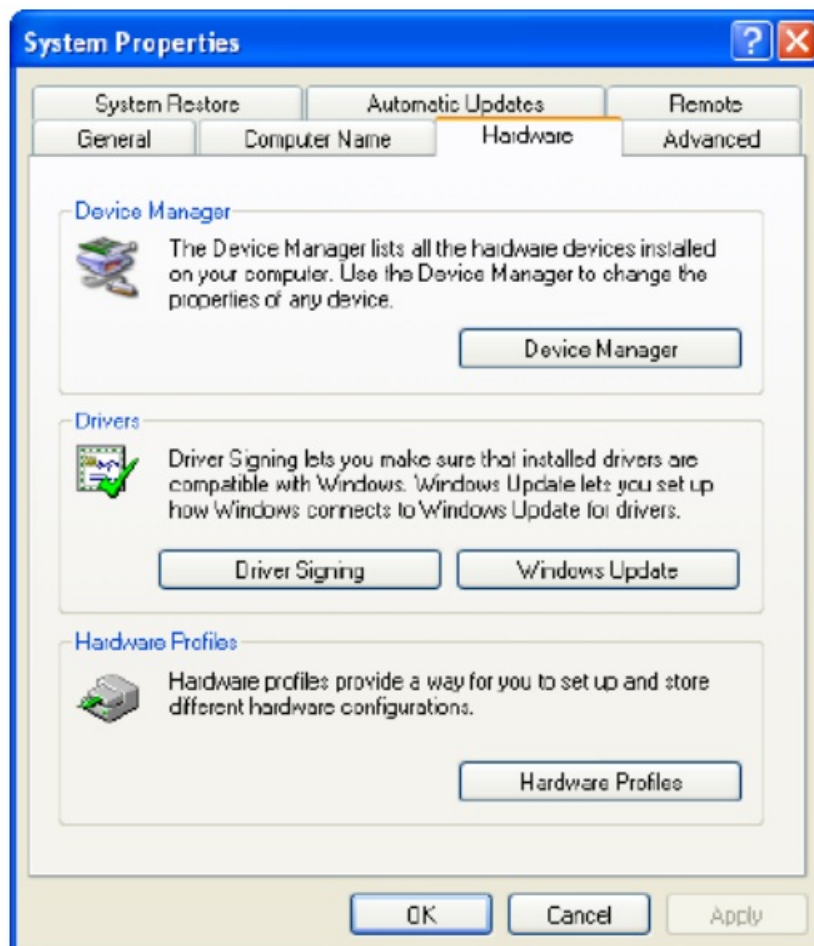


Figure 4-15 - Hardware tab

22. Click the + sign next to Ports (COM & LPT) to expand.

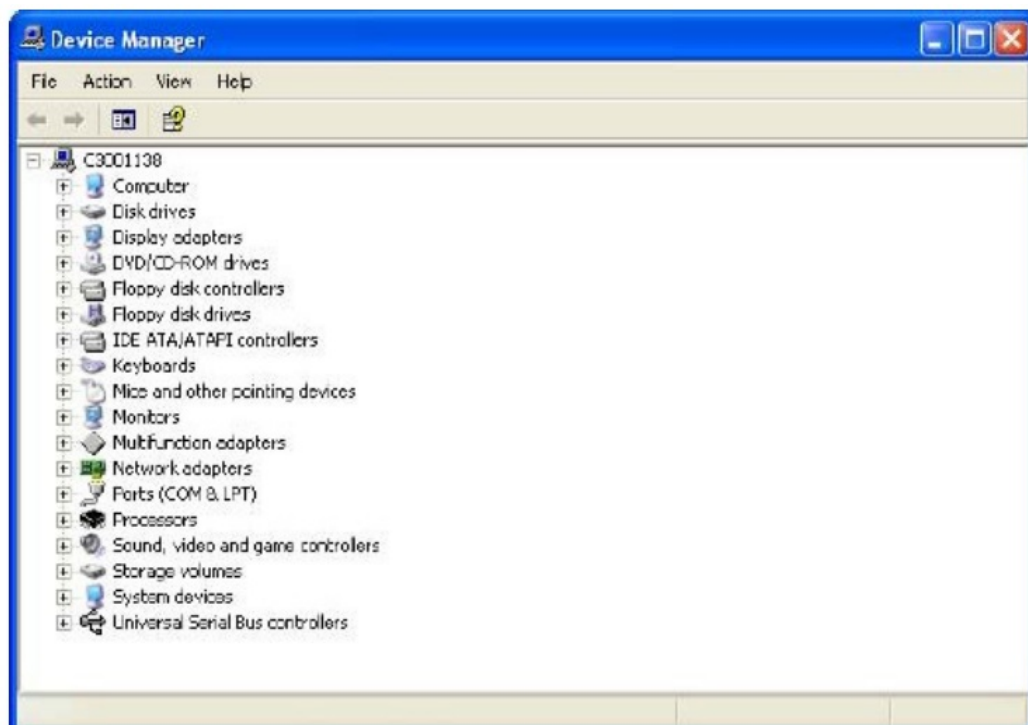


Figure 4-16 - Device Manager

23. The following example displays two NCC-2F cards installed. They are configured in pairs, for example, COM 3 and COM 4 are the first NCC-2F and COM 5 and COM 6 are the second NCC-2F. The NCC will use COM 3 for the first card and COM 5 for the second card.

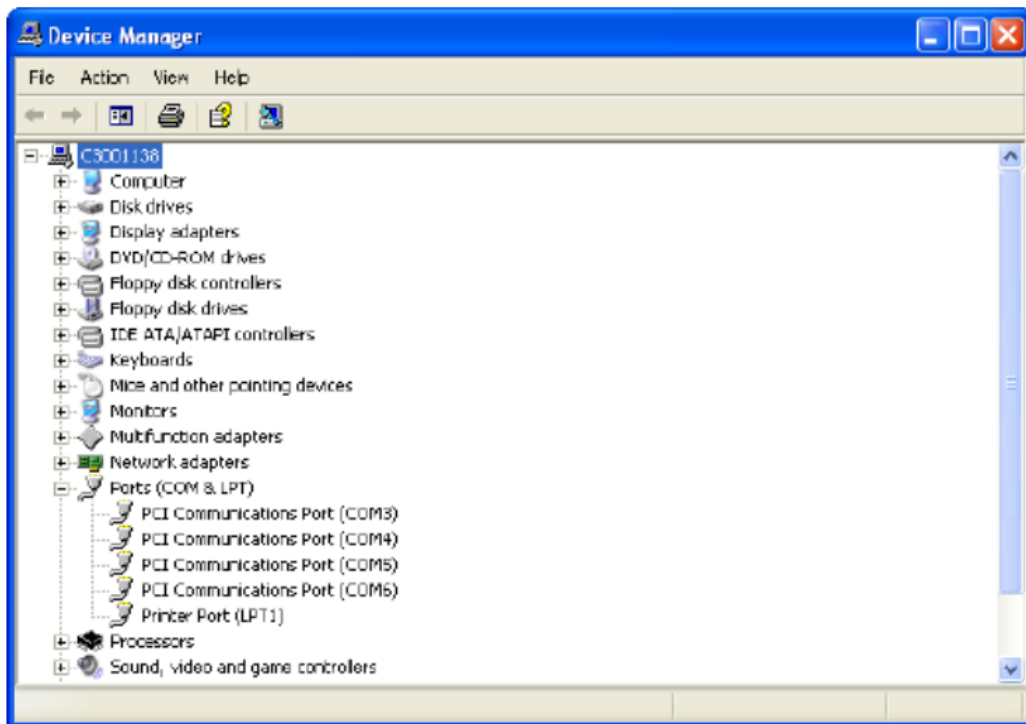


Figure 4-17 - COM 3 and COM 5

4.2 Installing NCC-2F Driver on Windows 7

After installing the NCC-2F card on the PC, Windows 7 will attempt to install a driver for the NCC2F card.

The installation should fail with the following message: 'Device driver software was not successfully installed', click Close.

To install Windows 7 drivers:

1. Insert the NCC-2F CD card driver software in the CD drive on the computer.
2. On the Windows desktop, right click on the Computer icon and select Properties from the drop-down menu.

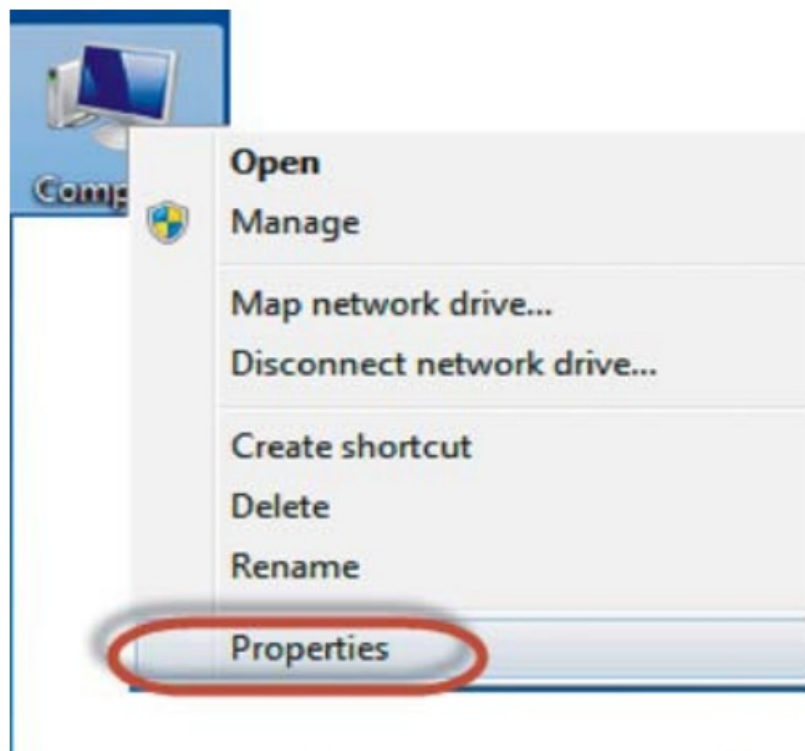


Figure 4-18 – Computer > Properties

3. Select Device Manager from the Properties menu.

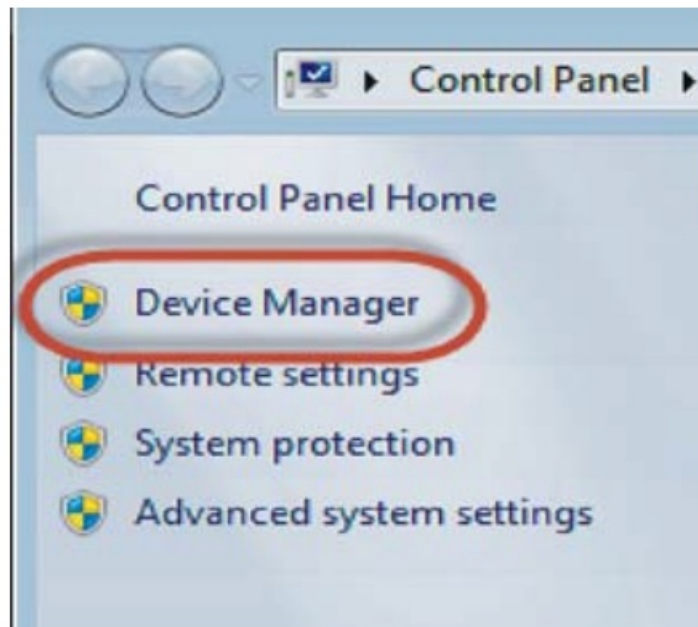


Figure 4-19 - Device Manager

4. On the message box, Do you want to allow the following program to make changes to this computer, select Yes.
5. From the Device Manager list, select PCI Serial Port (XP) or 16c95x Serial Port (Win7) under Other Devices from the list.

NOTE: You may need to observe and choose the serial port name as appropriate.

Depending on the computer and the operating system, there may be other names for the serial port device.

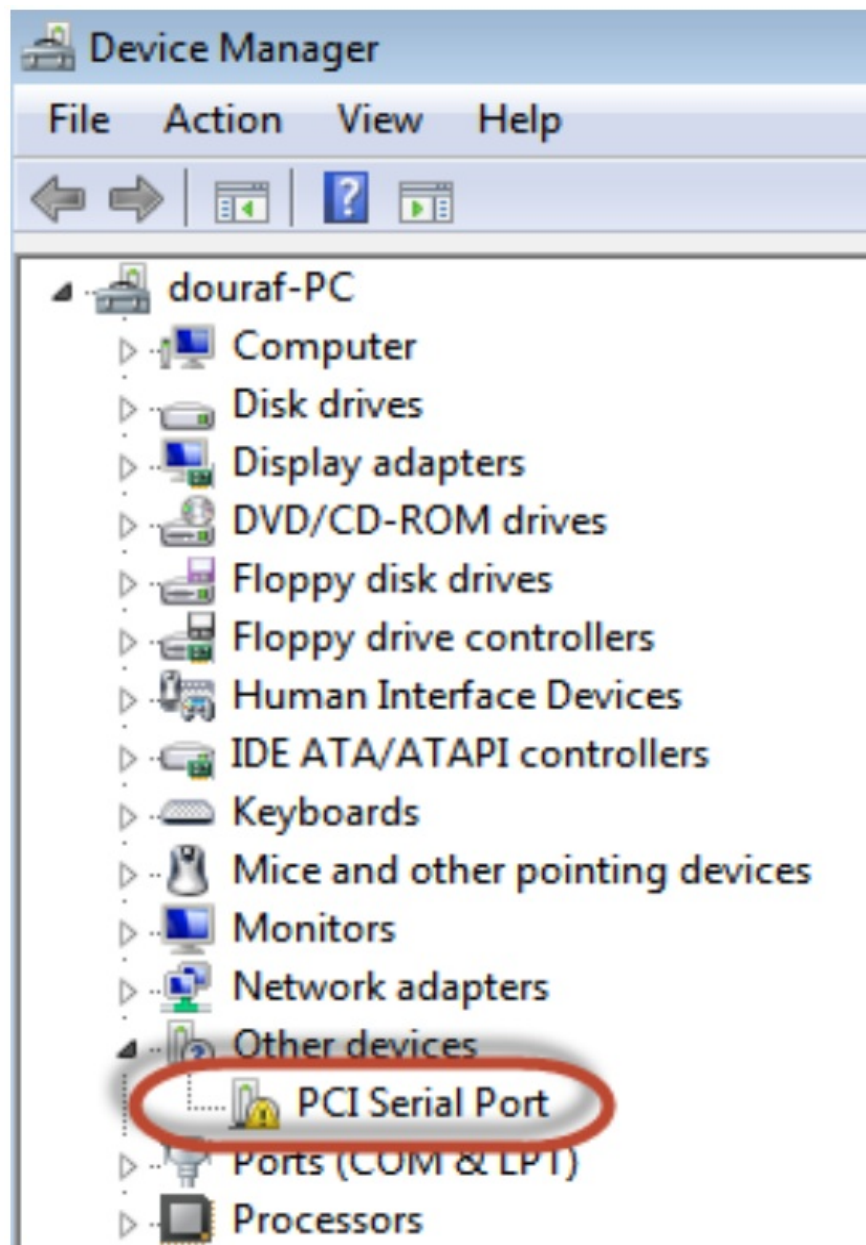


Figure 4-20 – PCI Serial Port

6. Highlight PCI Serial Port and right-click on it, then select Update Driver Software from the drop-down menu.

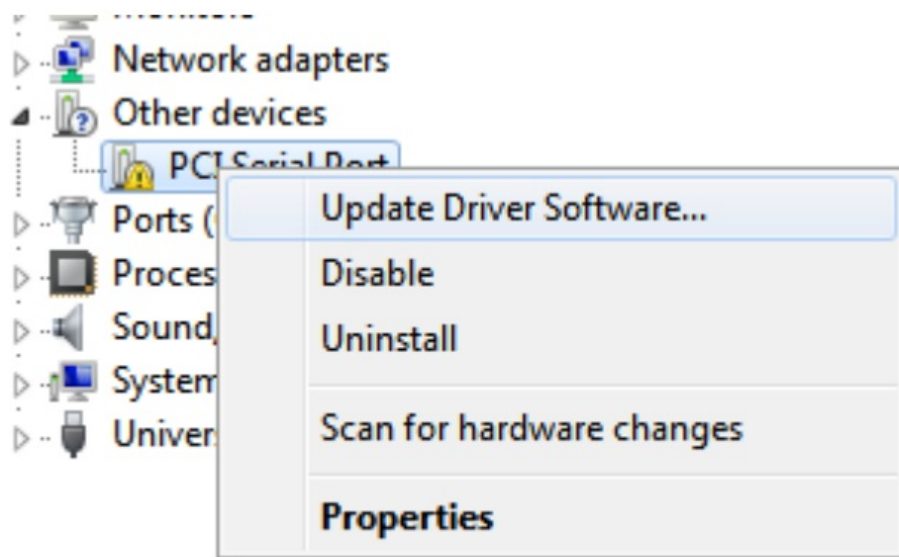


Figure 4-21 – Update Driver Software

7. Click Browse my computer from driver software from the message box.

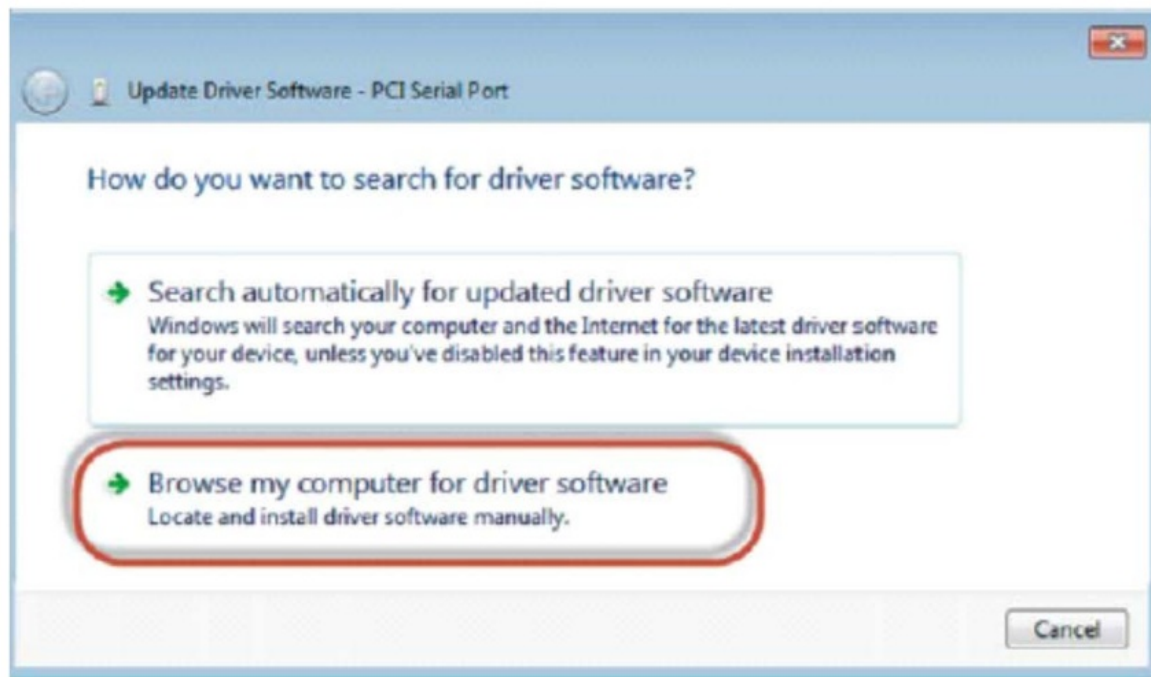


Figure 4-22 – Browse my computer from driver software

8. Click on Browse and navigate to the CD-ROM drive and locate the SP45463>X86 folder.

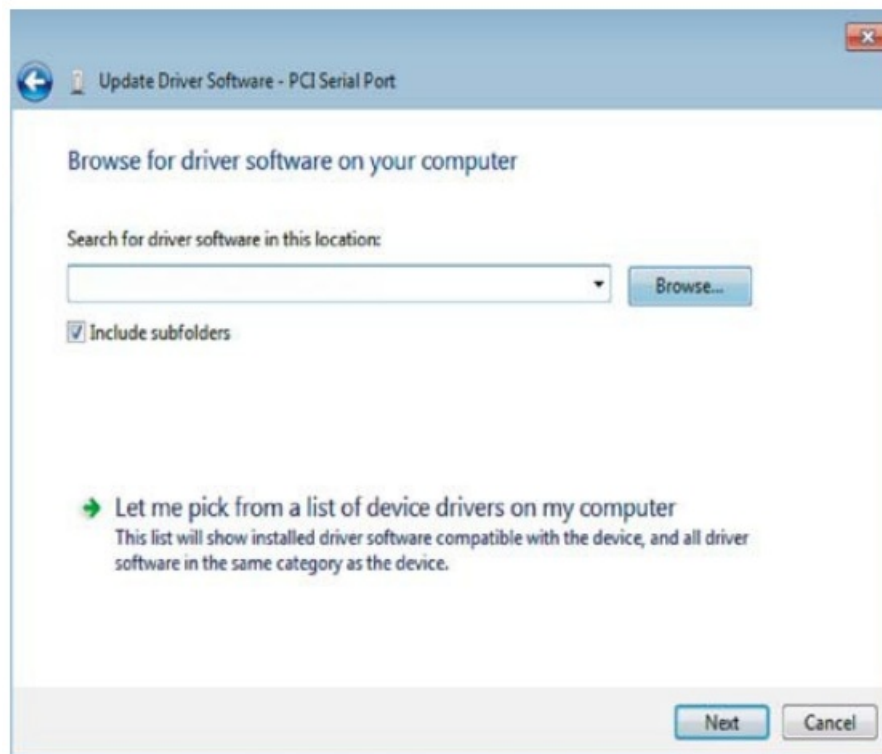


Figure 4-23 – Search for driver software

9. Highlight the folder x86 and click OK to proceed.

D:\drivers\NCC2F_DRIVERS\OxDriver_V70

NOTE: D = the CD Driver

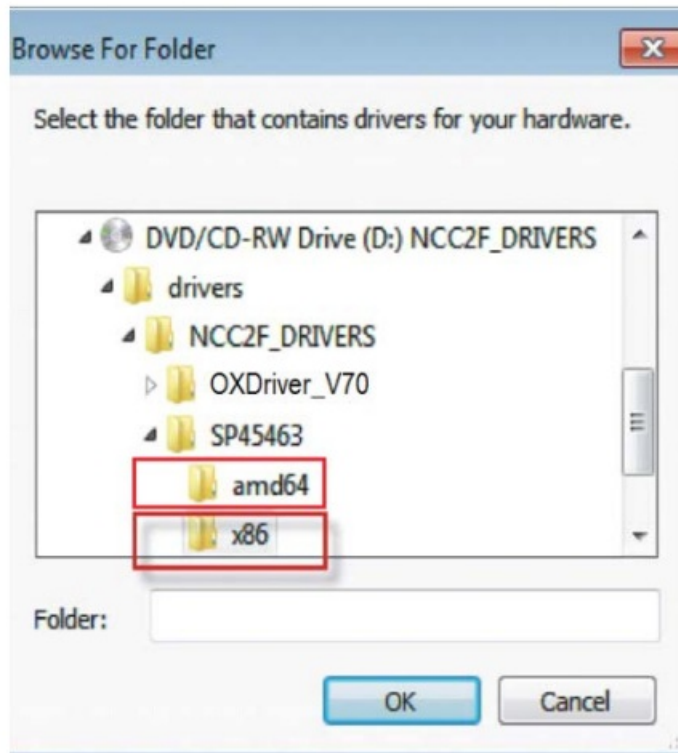


Figure 4-24 – Browse For Folder

10. Select the folder amd64 for 64bit PC or the folder x86 for 32bit PC.
11. On the Update Driver Software-PCI Serial Port window, the path will automatically be populated in the field. Verify the path and select Next.

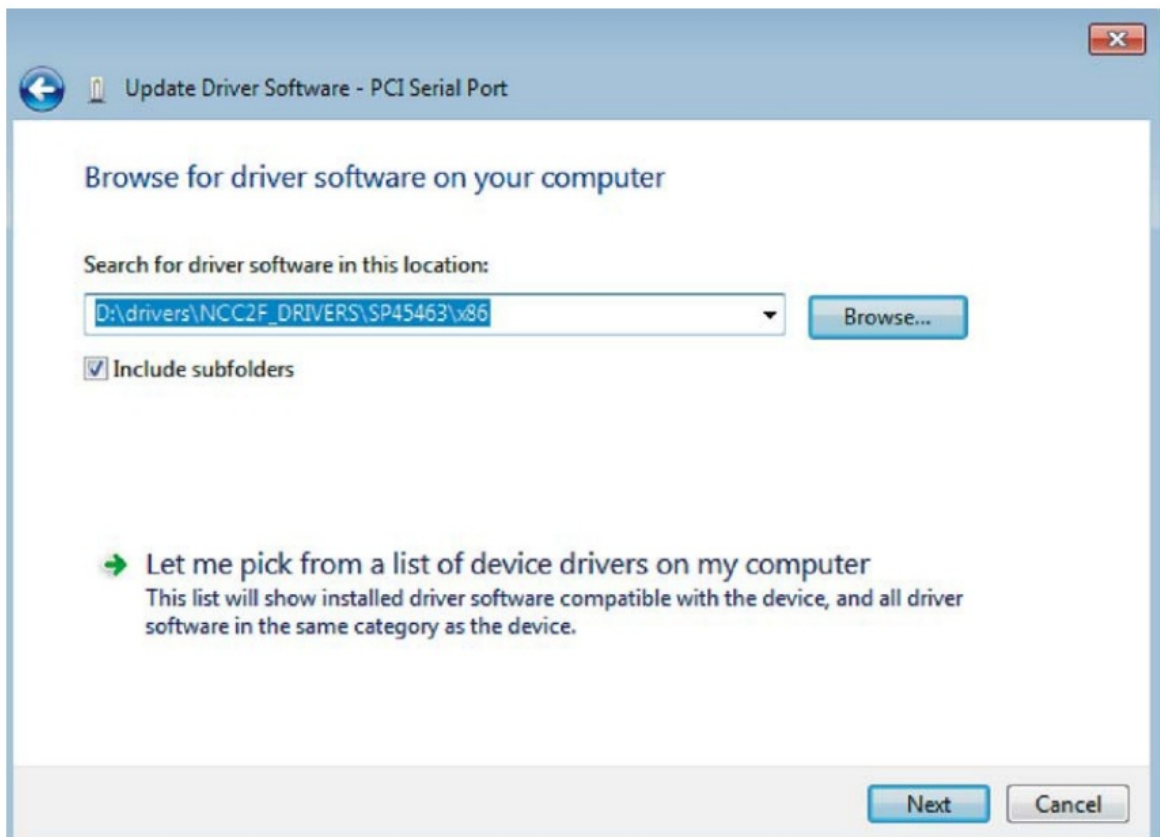


Figure 4-25 – Verify the path

12. Windows will prompt a Successful message once the install is completed. Click Close.



Figure 4-26 – Windows has successfully updated your driver software

13. To verify that the new COM Ports are ready to be used, refresh the Device Manager tree (F5) under Ports (COM & LPT). Enhanced Communication Port (COM3) and Enhanced Communication Port (COM4) will be displayed.

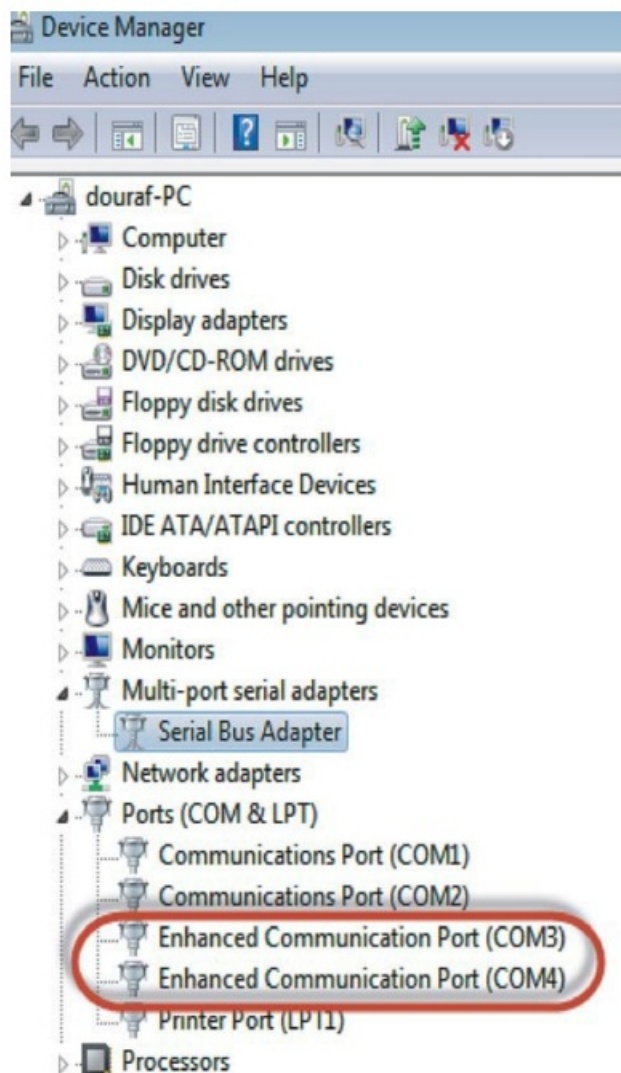



Figure 4-27 – Ports (COM & LPT)

14. If additional cards are required, follow the procedure from Step 1 of section Installing NCC-2F Driver on Windows 7 to install additional cards.
15. Process is complete.

Siemens Industry, Inc.
Building Technologies Division
Florham Park, NJ
Document ID A6V10451921_en--_a
P/N A5Q00064526
Siemens Canada Limited
Building Technologies Division
2 Kenvue Boulevard
Brampton, Ontario L6T 5E4 Canada
firealarmresources.com

Documents / Resources

	<p>SIEMENS NCCXP Series FireFinder Network Command Center [pdf] Instruction Manual NCCXP Series, NCCXP Series FireFinder Network Command Center, FireFinder Network Com mand Center, Network Command Center, Command Center</p>
---	---

References

-  [Fire Alarm Resources | Download fire alarm documents](#)

Manuals+.