



SIEMENS MLC MXL Addressable Device Line Card Instruction Manual

[Home](#) » [SIEMENS](#) » SIEMENS MLC MXL Addressable Device Line Card Instruction Manual 

Contents

- [1 SIEMENS MLC MXL Addressable Device Line Card](#)
- [2 INTRODUCTION](#)
- [3 OPERATION](#)
- [4 PRE-INSTALLATION](#)
 - [4.1 INSTALLATION](#)
- [5 FIRMWARE UPGRADES](#)
- [6 WIRING](#)
- [7 COMPATIBILITY](#)
- [8 License](#)
- [9 Cyber security disclaimer](#)
- [10 Documents / Resources](#)
 - [10.1 References](#)
- [11 Related Posts](#)

SIEMENS

SIEMENS MLC MXL Addressable Device Line Card



INTRODUCTION

The Model MLC MXL Line Card loop driver from Siemens Industry, Inc., is a module that allows MXL intelligent addressable smoke detectors, manual stations, monitor devices, and control devices to interface to the FireFinder- XLS/Desigo Fire Safety Modular/Cerberus PRO Modular System. The MLC uses two consecutive addresses on the HNET network. The application program that is loaded into the on-board microprocessor controls the MLC operation. An XLS/Desigo Fire Safety Modular/Cerberus PRO Modular system can support a maximum of 2500 MXL intelligent field devices using up to 25 MLC cards. The MLC contains nine diagnostic LEDs. Ground fault detection is provided. A USB port is included to allow firmware upload via the front panel. All field devices connected to the MLC are addressed and tested using the Device Programming Unit (DPU) or the FPI-21 Programmer/Tester. The select system setting on the DPU and FPI-32 must be set to MXL.

OPERATION

The MLC initializes, operates, and maintains all devices residing on the loop. The MLC communicates all relevant device and event information, such as alarms and troubles, to the PMI/PMI-2/PMI-3 (XLS), FCM2041-U2 (Desigo Fire Safety Modular), FCM2041-U3 (Cerberus PRO Modular). The sensitivity of any intelligent smoke detector and the logic functions of any intelligent output devices can be checked and adjusted from the PMI/PMI-2/PMI-3 (XLS), FCM2041-U2 (Desigo Fire Safety Modular), FCM2041-U3 (Cerberus PRO Modular) through the MLC. All information about the devices on the loop can be displayed on the PMI/ PMI-2/PMI-3 (XLS), FCM2041-U2 (Desigo Fire Safety Modular), FCM2041-U3 (Cerberus PRO Modular). To see the available information for each device on the loop, refer to the FireFinder-XLS IOM Manual, P/N 315-033744, the Desigo Fire Safety Modular IOM, Document ID A6V11231620, or the Cerberus PRO Modular IOM, Document ID A6V11231627. The MLC supports two separate circuits of MXL intelligent field devices. Each circuit can monitor and control up to 60 intelligent devices as well as device accessories (relay bases, audible bases, and remote lamps) in any combination. Each circuit has a separate address on the HNET network. The installer sets the address on the module for the first circuit which can be either odd or even. A consecutive address is automatically assigned to the second circuit internally. The on-board microprocessor provides the MLC with the ability to function and initiate alarm conditions even if the PMI/PMI-2/PMI-3 (XLS), FCM2041-U2 (Desigo Fire Safety Modular), FCM2041-U3 (Cerberus PRO Modular) fails.

Controls and Indicators

The front panel of the MLC contains one reset switch, 9 LEDs, and three HNET address switches, as shown in Figure 1. Pushing the reset switch re-initializes the MLC operation. The MLC must be re-initialized by pushing the module Reset switch any time the 24VDC supply is interrupted.

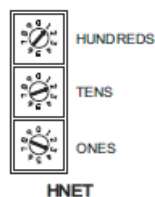


Figure 1
MLC Line Card

The LED functions are defined as follows:

POWER	(Green)	Normally ON. When illuminated, indicates the power for the MLC is applied to the card.
CARD FAIL	(Yellow)	Normally OFF. When illuminated, indicates hardware failure on the card or unsuccessful firmware upload. During firmware upload, this LED should blink.
HNET FAIL	(Yellow)	Normally OFF. When illuminated, indicates that the HNET communication with the MLC has terminated.
ALARM	(Red)	Normally OFF. When illuminated, indicates that the MLC has detected an alarm.
TROUBLE	(Yellow)	Normally OFF. When illuminated, indicates that a trouble is present on the MLC that is not related to its field wiring or slave ALD driver.
MAIN CIRCUITS TROUBLE	(Yellow)	Normally OFF. When illuminated, indicates that the MLC has detected a wiring trouble (fault) on device loop 1 or 2.
MAIN CIRCUITS GND FAULT	(Yellow)	Normally OFF. When illuminated, indicates that the MLC has detected a ground fault on device loop 1 or 2 field wiring.
EXPANSION CIRCUITS TROUBLE	(Yellow)	Normally OFF. Not used at this time.
EXPANSION CIRCUITS GND FAULT	(Yellow)	Normally OFF. Not used at this time.

PRE-INSTALLATION

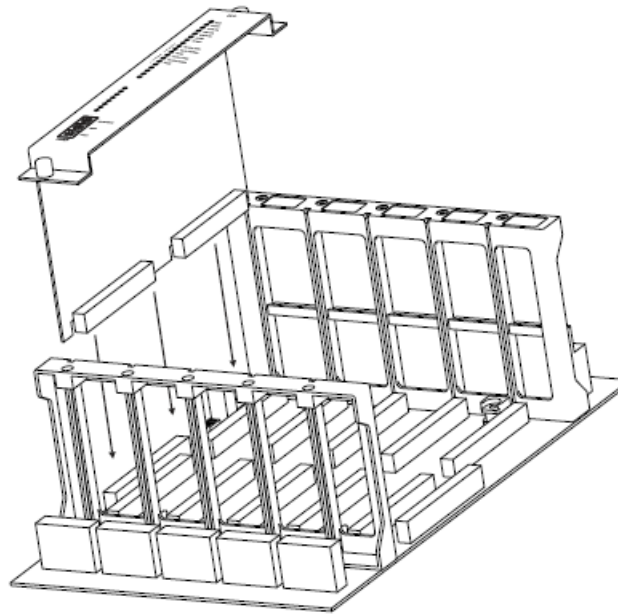


The following components must be set prior to inserting the card into the CC-5/CC-2 (refer to Figure 2): The MLC uses two module addresses in the HNET network. Set the lower of the two consecutive three-digit HNET network addresses (odd or even) for the MLC using the three rotary dial switches located near the bottom of the front panel. (Refer to Figure 1 for the location of the switches.) The address for the MLC must be the same as the address selected for it in the Zeus Programming Tool. To set the address, turn the pointers on each of the three dials to the numbers for the selected address. For example, if the address is 123, set the pointer for the HUNDREDS dial to “1”, set the pointer for the TENS dial to “2”, and set the pointer for the ONES dial to “3”. The range of allowable addresses is from 001 to 251 (leading zeros must be used).

INSTALLATION

Remove all system power before installation, first battery then AC. (To power up, connect the AC first, then the battery.) The MLC plugs perpendicularly into one slot in the CC-5/CC-2 card-cage via two 96-pin DIN connectors

and can occupy any slot in the card cage. (Refer to Figure 2.) Insert the MLC card into the card guides rightside up (lettering on the front panel is legible).




*Figure 2
Installing The MLC*

- Slide the card in until the card edge connectors contact the receptacles on the motherboard.
- Verify that the DIN connectors of the card and the card-cage aligned properly. The card can only plug in one direction to the card cage, if it does not align, DO NOT FORCE the card.
- Place thumbs on the front panel adjacent to the captive screws and gently apply even pressure on the card until the connectors seat in the receptacles on the motherboard.
- Secure with the captive screws.

FIRMWARE UPGRADES

The MLC is shipped with the latest firmware and the user should not have to upgrade unless suggested to do so by Siemens Industry, Inc. Technical Support. From time to time, modules used in XLS/Desigo Fire Safety Modular/Cerberus PRO Modular systems are upgraded to improve their operation or to add to their capabilities with new features. Firmware in the MLC is field upgradable. Refer to the Zeus Quickstart Manual, P/N 315-033875, and Zeus Help for additional details.

1. Plug one end of a user-supplied USB A to B cable into the USB port on the front of the MLC. Plug the other end into the host PC.
2. In Zeus, select the module to be upgraded in the Physical Tree. Then select the Build>Transfer>Module Firmware to Panel menu.
3. The Firmware via USB Port dialog displays a list of available firmware for the selected module. Select the firmware to be transferred.
4. Reset the module by depressing the reset switch with a pointed object, such as a pencil. The power and card fail LEDs should be blinking.
5. Click on Transfer to begin the module firmware transfer.
If the Transfer button is not pressed within 30 seconds of resetting the MLC, the module will revert back to operation mode.
6. After the transfer is completed, click on the  button to view the transfer detail status.
7. Disconnect the USB cable and reset the module.

Find MLC Software Version

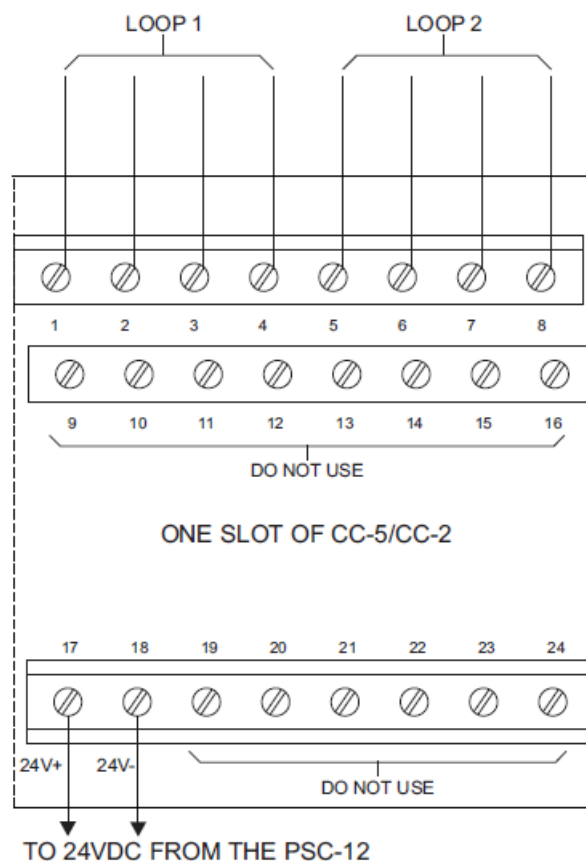
To check for the current version of MLC software in an installed MLC, go to the PMI/ PMI-2/PMI-3 (XLS), FCM2041-U2 (Desigo Fire Safety Modular), FCM2041-U3 (Cerberus PRO Modular) and press the Menu button, select Report, press the More Info button and select the MLC at that address. Press the Configuration soft key, press Appl Rev for the Application Version and press View.

WIRING

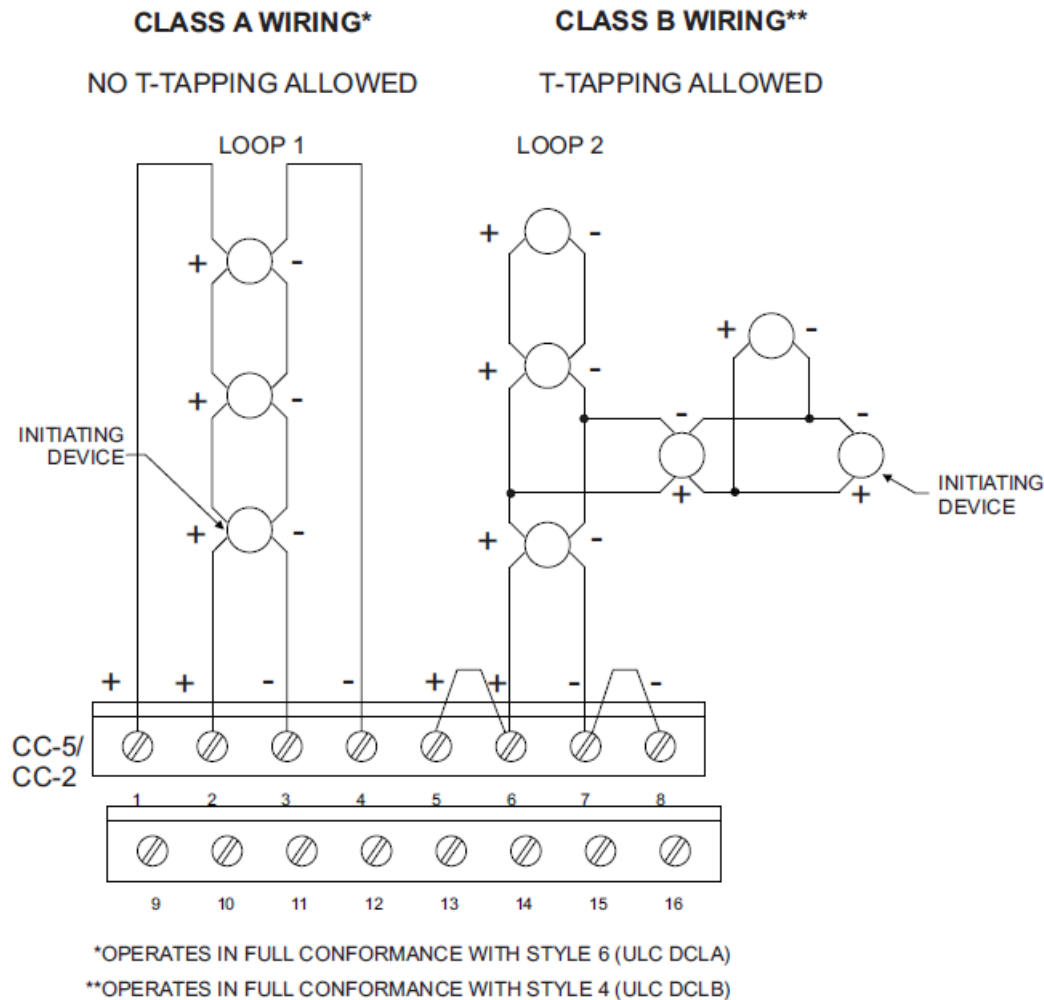
All field wiring to the MLC is connected to the terminal blocks of the CC-5/CC-2 card cage slot in which it is installed.

To Connect External Wiring

1. Loosen the screw of the terminal by turning it counterclockwise.
2. Insert the wire into the side of the terminal block.
3. Tighten the screw of the terminal block by turning it clockwise.



Connect +24V from the PSC-12/PSX-12 to terminal 17 and -24V from the PSC-12/ PSX-12 to terminal 18 of the slot in the CC-5/CC-2 where the MLC will be installed. (Refer to Figure 3.) Each device loop circuit can be wired Class B or Class A. MLC field circuit wiring does not require twisted, shielded wire. It can be installed in conduit containing low voltage power, notification appliance circuits, audible and speaker zone circuits, and RS-485 and other data circuits. Do not mix MLC and DLC circuits in the same conduit if the wire is untwisted and the run length exceeds 2000 feet. Electrical connections for the two loops are shown in Figure 4. Each device loop circuit can be independently wired in either Class A or Class B configuration.



NOTES:

1. EITHER LOOP MAY BE WIRED AS CLASS A OR CLASS B.
2. NO END OF LINE DEVICE REQUIRED.
3. BOTH CIRCUITS SUPERVISED AND POWER LIMITED PER NEC 760.
4. POSITIVE OR NEGATIVE GROUND FAULT DETECTED AT <25K OHMS ON TERMINALS 1-8.
5. IF LOOP 1 IS UNUSED, CONNECT A WIRE FROM TERMINAL 1 TO 2 AND A WIRE FROM TERMINAL 3 TO 4.
6. IF LOOP 2 IS UNUSED, CONNECT A WIRE FROM TERMINAL 5 TO 6 AND FROM TERMINAL 7 TO 8.

COMPATIBILITY

1. The MLC supports only the intelligent devices listed in Table 1 and Table 2. The compatibility identifiers for the compatible devices are the model numbers listed in Table 1. Use any combination of those listed.
2. The MLC supports two device loops of up to 60 intelligent field devices each. Each loop draws a maximum of 90mA from the MLC.
3. All circuits are power limited per NEC 760. The MLC supports the use of 12- 18 AWG non-shielded, non-twisted, thermoplastic fixture wire without conduit, if permitted by local building codes.
4. No end of line device is required.
5. Total circuit resistance of each zone must not exceed 100 ohms.
 - **Maximum capacitance:**
 - 0.4μF between loop+ and loop-

- 0.8μF between loop+ and chassis
- 0.8μF between loop- and chassis

6. T-tapping is not allowed on Class A loops.

7. Does not support P2 (H-Series) devices.

8. Alarm verification shall not be used in initiating device circuits intended for cross-zone operation.

TABLE 1

MLC COMPATIBLE DEVICES

Compatible Devices	Base	Installation Instructions	Maximum Quantity on the Loop
CZM-1B6	—	P/N 315-095355	30
	DB-3S/DB-X3RS with DB-ADPT	P/N 315-095921	
FP-11*	or		60
	DB-11/DB-X11RS/ADBX-11	P/N 315-095921	
	DB-3S/DB-X3RS with DB-ADPT	P/N 315-095921	
FPT-11	or		60
	DB-11/DB-X11RS/ADBX-11	P/N 315-095921	
ICP	—	P/N 315-092471	12
ICP-B6	—	P/N 315-095306	12
ILI-1*/-1H*	DB-3S, DB-X3RS	P/N 315-095387	60
ILI-1A*/-1AH*	DB-3S, DB-X3RS	P/N 315-095387	60

ILI-1B(d)*/-1BH(d)*	AD-3I, AD-3XRI	P/N 315-093234 P/N 315-093235	60
ILP-1*/ILPT-1*	DB-3S, DB-X3RS	P/N 315-092594	60
ILP-1(d)*	AD-3ILP	P/N 315-093234	60
ILP-2	DB-3S, DB-X3RS	P/N 315-095028	60
ILP-2(d)	AD-3ILP	P/N 315-093234	60
ILT-1	DB-3S	P/N 315-093336	60
MSI-1/-2		P/N 315-090437	30
MSI-10/-20	—	P/N 315-090903	30
MSI-10B/-20B	—	P/N 315-093329	30
MSI-30B(C)	—	P/N 315-099274	30
MSI-B6F	—	P/N 315-095302	30
MSI-MB6	—	P/N 315-093613	30
TRI-B6/-B6D/-B6R**	—	P/N 315-093315	60
TRI-B6M**	—	P/N 315-049485	60
TRI-S/-D/-R**	—	P/N 315-049481	60

- duct application

- supports drift compensation (IEC)
- TRI devices with security usage cannot be mixed on the same loop with devices having any other usage.

TABLE 2

MLC COMPATIBLE LEGACY RETROFIT DEVICES UL864 8TH EDITION†

Compatible Devices	Base	Installation Instructions	Maximum Quantity on the Loop
CZM-1	—	P/N 315-090725	30
ID-60I/-60IH*	DB-3S, DB-X3RS	P/N 315-090287	60
ID-60IA/-60IAH*	DB-3S, DB-X3RS	P/N 315-090287	60
ID-60IB(d)/-60IBH(d)*	AD-3I, AD-3XRI	P/N 315-093234 P/N 315-093235	60 60
ID-60P/-60PT*	DB-3S, DB-X3RS	P/N 315-090289	60
ID-60T	DB-3S, DB-X3RS	P/N 315-090289	60
TRI-2/-2R/-2D**	—	P/N 315-090556	60
TRI-60/-60R/-60D**	—	P/N 315-092329	60
TRI-MMS**	—	P/N 315-699547	60
TRI-MTD**	—	P/N 315-699548	60

CZM-1/-1B6 Compatibility

Table 3 contains compatibility data for the CZM-1/-1B6 when the CZM-1/-1B6 is configured to perform alarm verification. Each detector model is listed with the allowable Zeus alarm verification delay range in seconds. This

setting is made in Zeus. In the Physical View, select the panel. In the Detail View, select the Properties tab. Make the appropriate setting in the field labeled “DLC Alarm Verification Delay Time (sec),” as shown in Figure 5.

TABLE 3

CZM-1/-1B6 ALARM VERIFICATION COMPATIBILITY

Detector Model	Allowable DLC Alarm Verification Delay Time (sec.)	Category
DI-3/3H	23-54 (23-30 in Canada and California)	A
DI-A3/A3H	23-54 (23-30 in Canada and California)	A
DI-B3/B3H	23-54 (23-30 in Canada and California)	A
DT-3P-135	Not Compatible	—
DT-11	Not Compatible	—
PB-1191	Not Compatible	—
PE-3	39-54 (Cannot be used in Canada or California)	B
PE-11/11T	Not Compatible	—

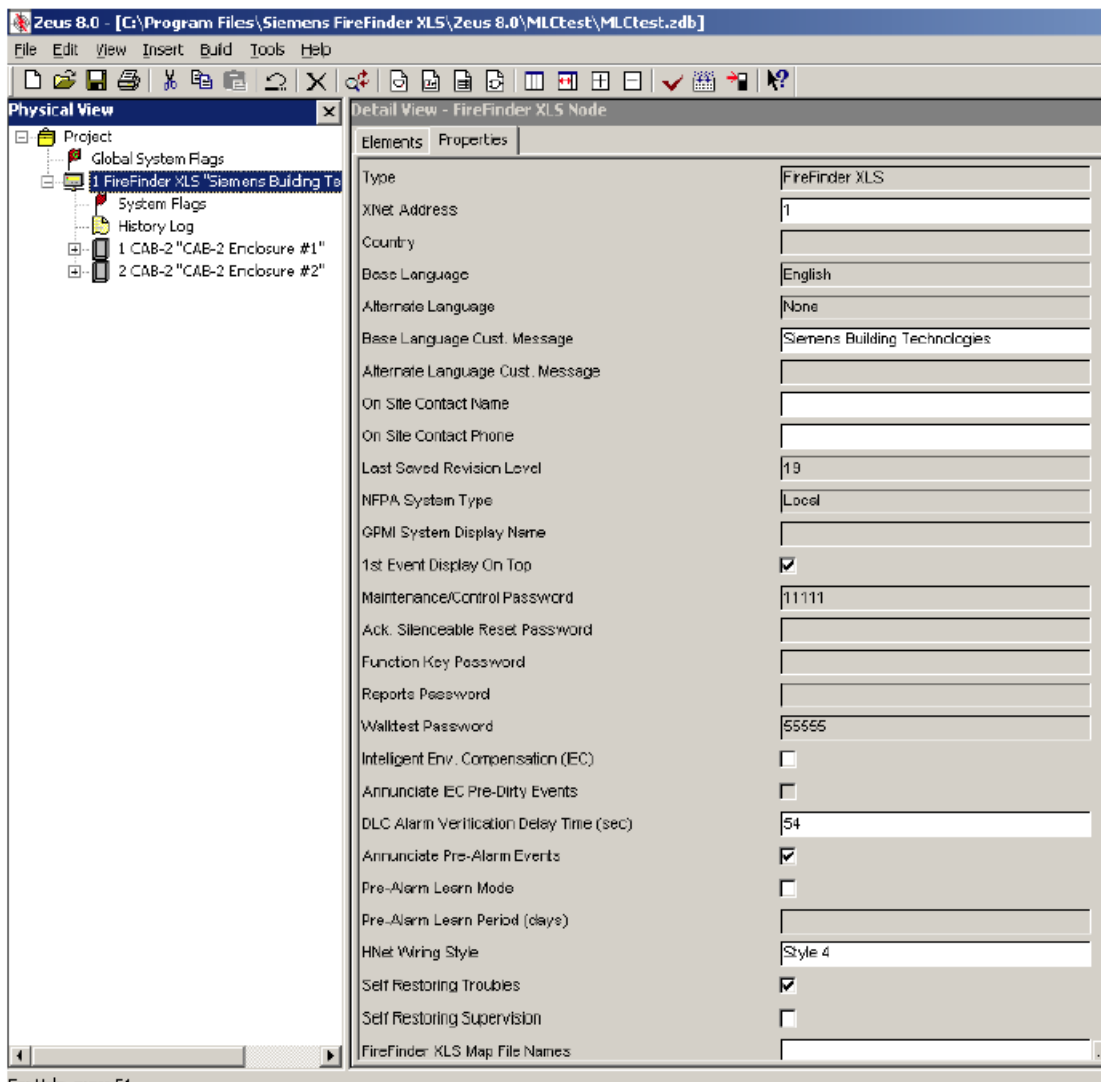


Figure 5
Selecting "DLC Alarm Verification Delay Time (sec.)"

Detectors with "Not Compatible" shown in Table 3 cannot be used with the CZM-1/-1B6 alarm verification feature, but can be used when alarm verification is disabled. Each detector is assigned a category. Do not mix detectors from different categories on the same circuit.

ELECTRICAL RATINGS

- 24V Back Plane Current 28mA
- Screw Terminal 24V Current 90mA + 1.5mA per device
- 6.2 Back Plane Current 1.5mA
- 24V Standby Current 120mA + 1.5mA per device

License

Embedded in this product are free software files that you may copy on a data carrier, distribute and/or modify under the terms of their respective license:

1. MD5 Message Digest Algorithm – 1.0 – MD5 License

Generally, these embedded free software files are distributed in the hope that they will be useful, but WITHOUT

ANY WARRANTY, without even implied warranty such as for MERCHANTABILITY or FITNESS FOR A PARTICULAR PURPOSE, and without liability for any Siemens entity other than as explicitly documented in your purchase contract.

MD5 License

License to copy and use this software is granted provided that it is identified as the “RSA Data Security, Inc. MD5 Message-Digest Algorithm” in all material mentioning or referencing this software or this function. License is also granted to make and use derivative works provided that such works are identified as “derived from the RSA Data Security, Inc. MD5 Message-Digest Algorithm” in all material mentioning or referencing the derived work. RSA Data Security, Inc. makes no representations concerning either the merchantability of this software or the suitability of this software for any particular purpose. It is provided “as is” without express or implied warranty of any kind. These notices must be retained in any copies of any part of this documentation and/or software.

BSD license

THIS SOFTWARE IS PROVIDED BY FREESCALE “AS IS” AND ANY EXPRESSED OR IMPLIED WARRANTIES, INCLUDING, BUT NOT LIMITED TO, THE IMPLIED WARRANTIES OF MERCHANTABILITY AND FITNESS FOR A PARTICULAR PURPOSE ARE DISCLAIMED. IN NO EVENT SHALL FREESCALE OR ITS CONTRIBUTORS BE LIABLE FOR ANY DIRECT, INDIRECT, INCIDENTAL, SPECIAL, EXEMPLARY, OR CONSEQUENTIAL DAMAGES (INCLUDING, BUT NOT LIMITED TO, PROCUREMENT OF SUBSTITUTE GOODS OR SERVICES; LOSS OF USE, DATA, OR PROFITS; OR BUSINESS INTERRUPTION) HOWEVER CAUSED AND ON ANY THEORY OF LIABILITY, WHETHER IN CONTRACT, STRICT LIABILITY, OR TORT (INCLUDING NEGLIGENCE OR OTHERWISE) ARISING IN ANY WAY OUT OF THE USE OF THIS SOFTWARE, EVEN IF ADVISED OF THE POSSIBILITY OF SUCH DAMAGE.

Permission Notice SUN RPC

Redistribution and use in source and binary forms are permitted provided that the above copyright notice and this paragraph are duplicated in all such forms and that any documentation, advertising materials, and other materials related to such distribution and use acknowledge that the software was developed by Carnegie Mellon University. The name of the University may not be used to endorse or promote products derived from this software without specific prior written permission. THIS SOFTWARE IS PROVIDED “AS IS” AND WITHOUT ANY EXPRESS OR IMPLIED WARRANTIES, INCLUDING, WITHOUT LIMITATION, THE IMPLIED WARRANTIES OF MERCHANTABILITY AND FITNESS FOR A PARTICULAR PURPOSE

Copyright notices

- Copyright (c) 2006-2009 by HCC Embedded
- Copyright: 1997 – 2009 Freescale Semiconductor, Inc. All Rights Reserved
- Copyright © 1993-1998 Metrowerks, Inc. All Rights Reserved.
- Copyright (C) Siemens Industry Inc. Building Technologies Div.
- Copyright (C) 1984, Sun Microsystems, Inc.
- Copyright (C) 1991-2008 Altera Corporation — Your use of Altera Corporation
- Copyright (c) 1989 Carnegie Mellon University.** All rights reserved.
- Copyright (c) 1989-2009 ARC International;* All Rights Reserved
- Copyright (c) 2004-2010 Embedded Access Inc.;* All Rights Reserved
- Copyright (c) 2008 – 2010 Freescale Semiconductor;* All Rights Reserved
- Copyright (C) 1991-2, RSA Data Security, Inc. Created 1991. All rights reserved.

Cyber security disclaimer

Siemens products and solutions provide security functions to ensure the secure operation of building comfort, fire safety, security management and physical security systems. The security functions on these products and solutions are important components of a comprehensive security concept. It is, however, necessary to implement


and maintain a comprehensive, state-of-the-art security concept that is customized to individual security needs. Such a security concept may result in additional site-specific preventive action to ensure that the building comfort, fire safety, security management or physical security system for your site are operated in a secure manner. These measures may include, but are not limited to, separating networks, physically protecting system components, user awareness programs, defense in depth, etc. For additional information on building technology security and our offerings, contact your Siemens sales or project department. We strongly recommend customers to follow our security advisories, which provide information on the latest security threats, patches and other mitigation measures. <http://www.siemens.com/cert/en/cert-security-advisories.htm>.

Siemens Industry, Inc.

Building Technologies Division
Florham Park, NJ
Siemens Canada, Ltd.
1577 North Service Road East
Oakville, Ontario
L6H 0H6 Canada

firealarmresources.com

Documents / Resources

	<p>SIEMENS MLC MXL Addressable Device Line Card [pdf] Instruction Manual MLC, MLC MXL Addressable Device Line Card, MXL Addressable Device Line Card, Addressable Device Line Card, Device Line Card, Line Card</p>
--	---

References

- [🔥 Fire Alarm Resources | Download fire alarm documents](#)
- [S CERT Services | Services | Siemens Global](#)