

# SIEMENS

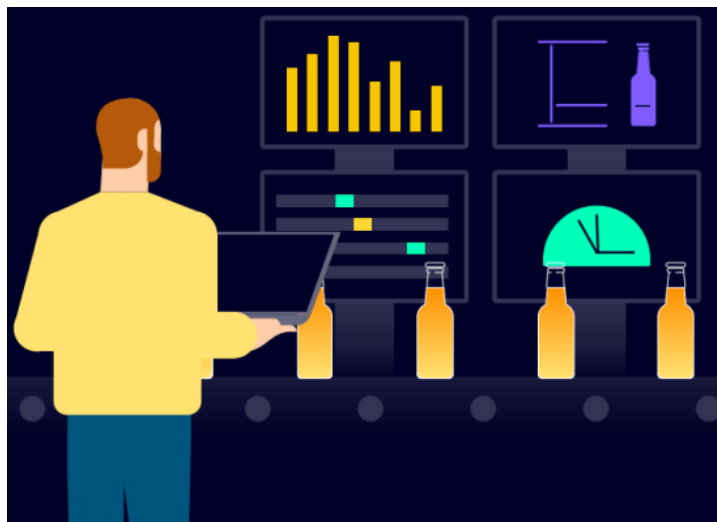
## FOOD & BEVERAGE INDUSTRY

Brewing Transparency

and Efficiency with

Real-Time Digitalization

Carlsberg India



### Contents [ [hide](#) ]

- 1 [Digital Brewing Intelligence](#)
- 2 [Siemens Solution for “Digital Brewing Intelligence”](#)
- 3 [Real-Time Insights and Tangible Benefits](#)
- 4 [Documents / Resources](#)
  - 4.1 [References](#)

## Digital Brewing Intelligence

### Enhancing Process Visibility and Performance



Carlsberg India, a global leader in the brewing industry, embarked on a digital transformation journey at its Mysuru facility located in Nanjangud to modernize its Brewhouse and Process (B&P) operations. The goal was to transition from manual logbooks to a fully digital, real-time monitoring system that would enhance operational efficiency, ensure data integrity, and support continuous improvement.

The brewery faced challenges such as manual tracking of brew batches, fragmented data on quality parameters, and limited visibility into equipment performance. These issues impacted consistency, traceability, and responsiveness. To address this, Carlsberg partnered with Siemens to implement a pilot “Digitalization of Brewhouse & Process Performance Management System” as part of its Industry 4.0 roadmap.

### **Siemens Solution for “Digital Brewing Intelligence”**

Siemens’ comprehensive digital solution seamlessly integrates with Carlsberg’s existing automation infrastructure. The system captures real-time data directly from the source, eliminating manual intervention and ensuring accuracy and transparency across the brewing process.

Key components of the solution include:








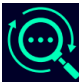


- WinCC V8.0 SCADA and PM Add-ons 10.4 for real-time process visualization and analytics
- Automated Brew Cards and Filtration Charts for batch-wise tracking
- Key Activity Indicator (KAI) Dashboards for performance benchmarking
- Automated email reporting to key stakeholders for enhanced shopfloor transparency
- Live dashboards for machine status, brew cycle time, and fermentation tracking

The system also supports historical data analysis, enabling brewers and management to identify trends, optimize processes, and respond proactively to deviations.



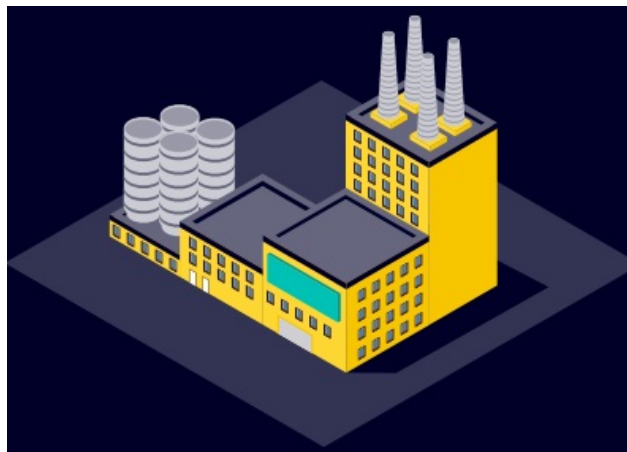
## Real-Time Insights and Tangible Benefits

The digital platform provides a plant-wide view of the brewing process, from raw material handling to fermentation. Operators and managers can monitor:

	Live brew tracking with cycle time and batch status
	Fermentation progress across all unitanks with deviation alerts
	Machine performance including ON/OFF status, idle time, and breakdowns
	Shift-wise operator performance and maintenance schedules
	Reduction in beer loss and improved quality control
	Golden batch prediction for consistent product quality
	Customized reports for daily, weekly, and monthly production metrics
	Remote access for SMEs to monitor and analyze brew quality anytime
	Improved operator ownership through intuitive dashboards
	Enhanced traceability and compliance with digital logbooks

The digitalization of Carlsberg's brewing operations has delivered measurable improvements across multiple dimensions. Operators now have access to live dashboards that provide real-time insights into machine status, brew progress, and fermentation conditions. This has enabled faster response times, reduced downtime, and improved ownership among shop floor personnel.

The system has also contributed to tangible resource savings. Steam consumption has been reduced by 0.2 KWH per hectoliter, while power savings have reached 200 units per month. These efficiencies have supported Carlsberg's sustainability goals and optimized energy utilization across the plant.



With the ability to track each brew in real time and analyze historical data, Carlsberg has introduced the concept of a “golden batch”—a benchmark for quality that can be replicated in future production cycles. The digital platform also facilitates lean manufacturing by maintaining historical data for up to one year, enabling brewers to investigate customer complaints and continuously improve processes.

Partnering with Siemens has been a game-changer for Carlsberg India.

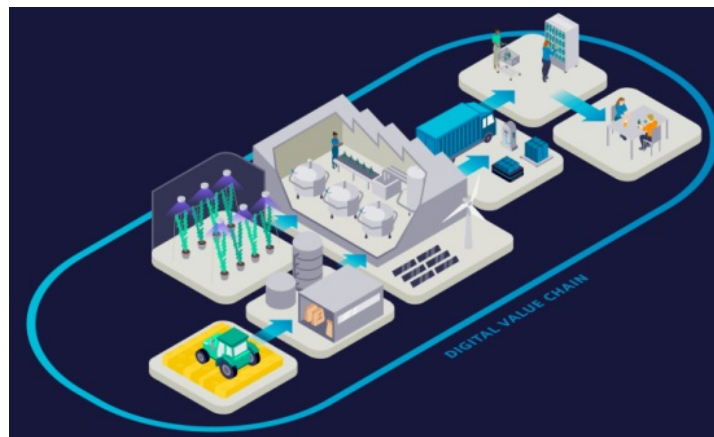
Their domain expertise and advanced easy to adapt solutions have enabled us to seamlessly integrate our brewing and filtration processes, automate data collection, and enhance real-time monitoring. As a result, we've achieved significant improvements in operational efficiency, data accuracy, and resource utilization. Siemens' solutions have empowered us to set new standards in the brewing industry, ensuring consistent quality and optimal performance.

Alokesh Biswas, Head Manufacturing Operations, Carlsberg India

### **Holistic approach from the field to glass with Siemens Xcelerator**

The increasing demands for healthy, sustainable products and their sustainable production require a holistic approach. Digitization enables manufacturers to prove at all times, from the field to the table, that they comply with regulations and ensure the best possible quality of beers. To do this, they need to become a Digital Enterprise, which is

possible with Siemens Xcelerator at speed and scale. It is our open digital business platform that serves as a catalyst for accelerating your digitalization journey. Siemens Xcelerator makes it easier than ever before for companies to navigate digital and sustainable transformation. It provides step-by-step support, enabling you to undergo digital & sustainable transformation with minimal resources and tangible impact. By combining the real and the digital worlds across operational and information technology, we empower you to boost productivity, competitiveness and scale up innovations with Siemens Xcelerator.



<https://www.siemens.com/in/en/company/topic-areas/digital-enterprise/references/carlsberg.html>

Click here / Scan to read the full story

**Siemens Limited**

Digital Industries, R&D Technology Centre

Thane Belapur Road, Airoli, Navi Mumbai – 400 708

[www.siemens.co.in](http://www.siemens.co.in)

© 2025 Siemens. A list of relevant Siemens trademarks can be found herOther trademarks belong to their respective owners.

For more information call us on 1800 209 1800


For Life Cycle Support of Products,

Systems and Solutions call us on 1800 208 0987

For more information, visit: [siemens.com/automotive-smart-manufacturing](https://www.siemens.com/automotive-smart-manufacturing)



Disclaimer: The contents of this document are proprietary information of Siemens.  
Unauthorised use of any part of the images or content is prohibited and liable for legal action.

## Documents / Resources

	<a href="#">SIEMENS Digital Brewing Intelligence System [pdf]</a> Instructions Digital Brewing Intelligence System, Brewing Intelligence System, Intelligence System, System
---	--

## References

- [User Manual](#)

 Brewing Intelligence System, Digital Brewing Intelligence System, Intelligence System, SIEMENS,  
 SIEMENS System

---

## Leave a comment

Your email address will not be published. Required fields are marked \*

Comment \*

Name

Email

---

Website

☐ Save my name, email, and website in this browser for the next time I comment.

**Post Comment**

**Search:**

e.g. whirlpool wrf535swhz

**Search**

[Manuals+](#) | [Upload](#) | [Deep Search](#) | [Privacy Policy](#) | [@manuals.plus](#) | [YouTube](#)

This website is an independent publication and is neither affiliated with nor endorsed by any of the trademark owners. The "Bluetooth®" word mark and logos are registered trademarks owned by Bluetooth SIG, Inc. The "Wi-Fi®" word mark and logos are registered trademarks owned by the Wi-Fi Alliance. Any use of these marks on this website does not imply any affiliation with or endorsement.