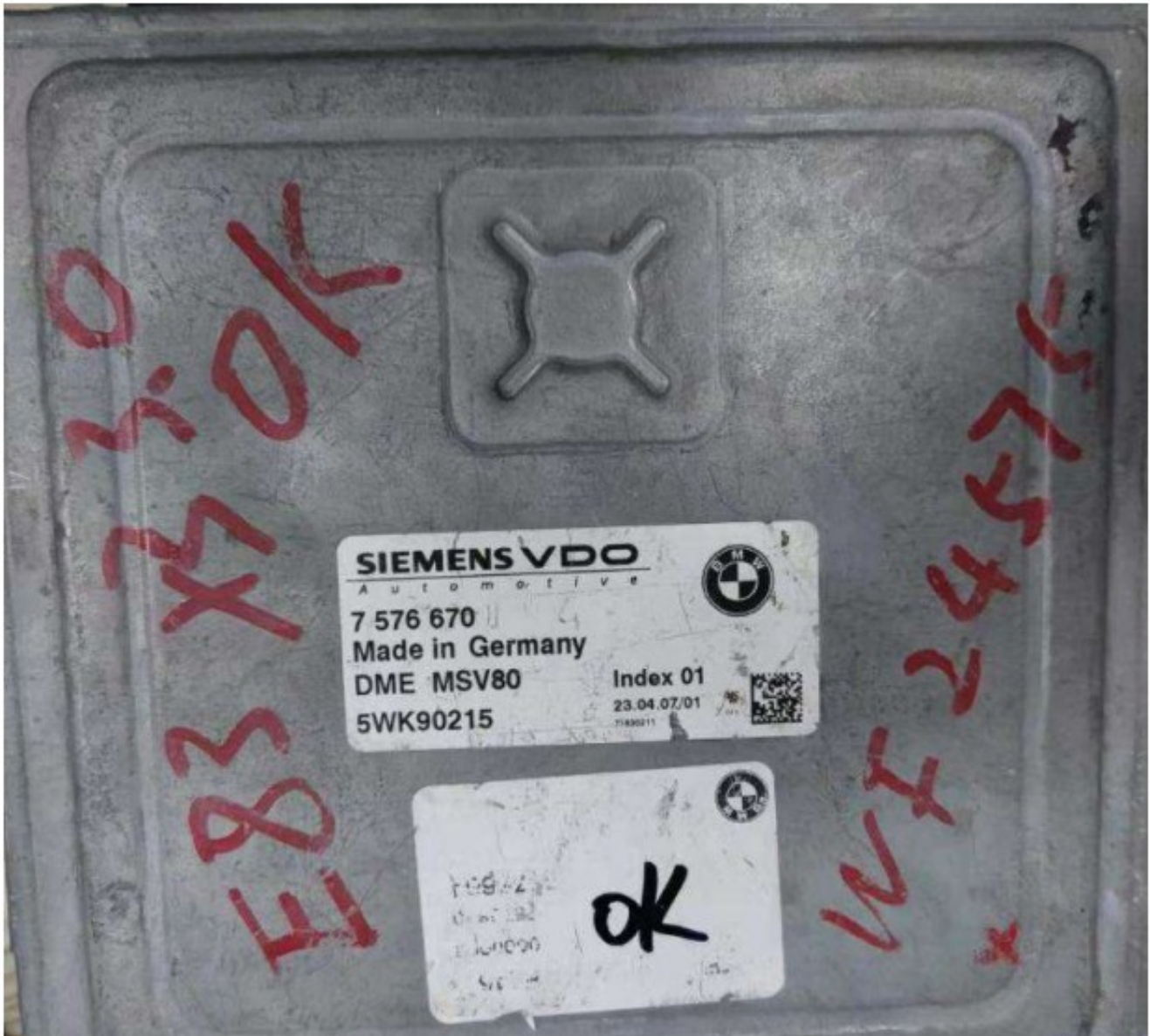


SIEMENS AT200 MSV80 Read Write ISN and Backup Data User Guide

[Home](#) » [SIEMENS](#) » SIEMENS AT200 MSV80 Read Write ISN and Backup Data User Guide 

SIEMENS

AT200 MSV80 Read Write ISN and Backup Data
User Guide



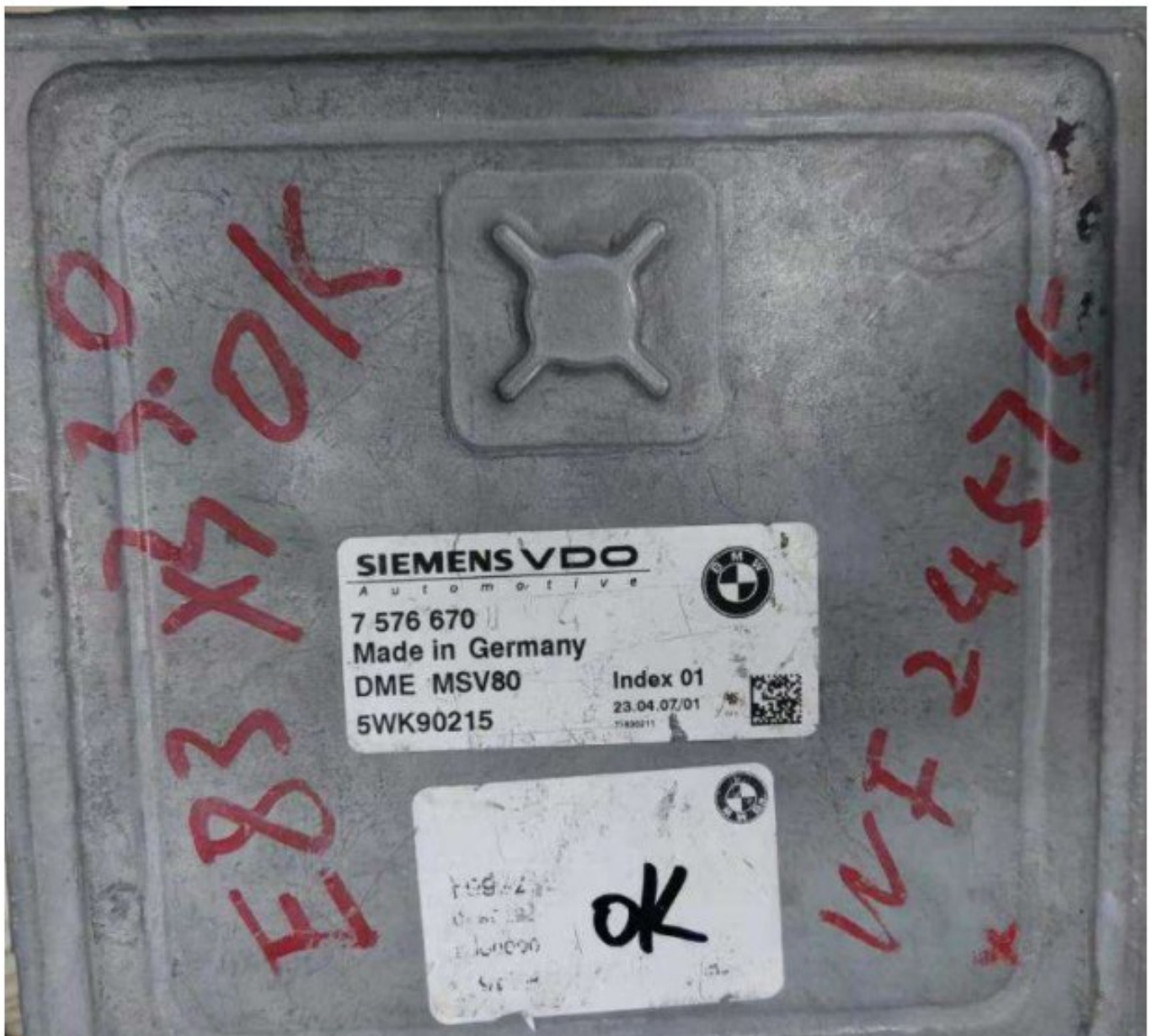
AT200 MSV80 read/ write ISN and back up data

Contents

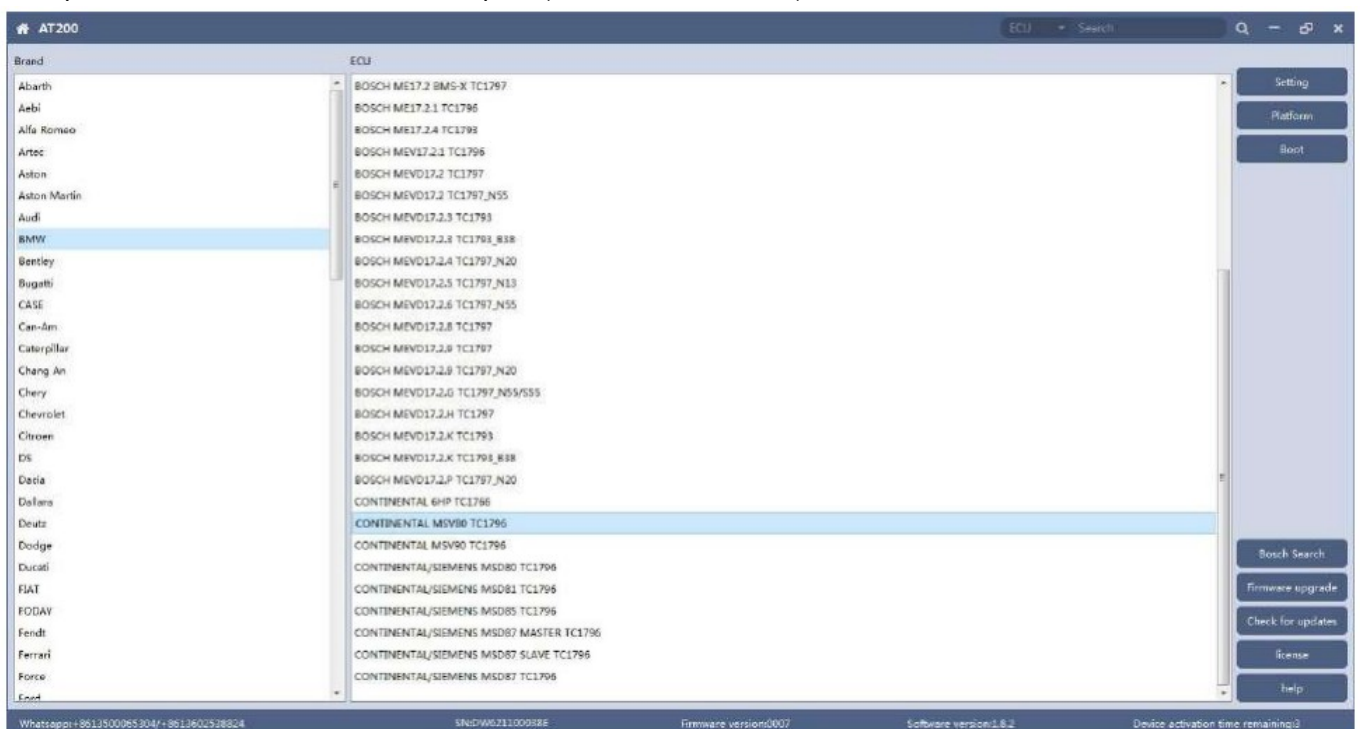
- 1 Connection
- 2 Identification ECU(Confirm whether ECU information can be recognized normally at this time)
- 3 Read ISN
- 4 Write ISN
- 5 Backup data
- 6 Restore data
- 7 Documents / Resources
 - 7.1 References

Connection

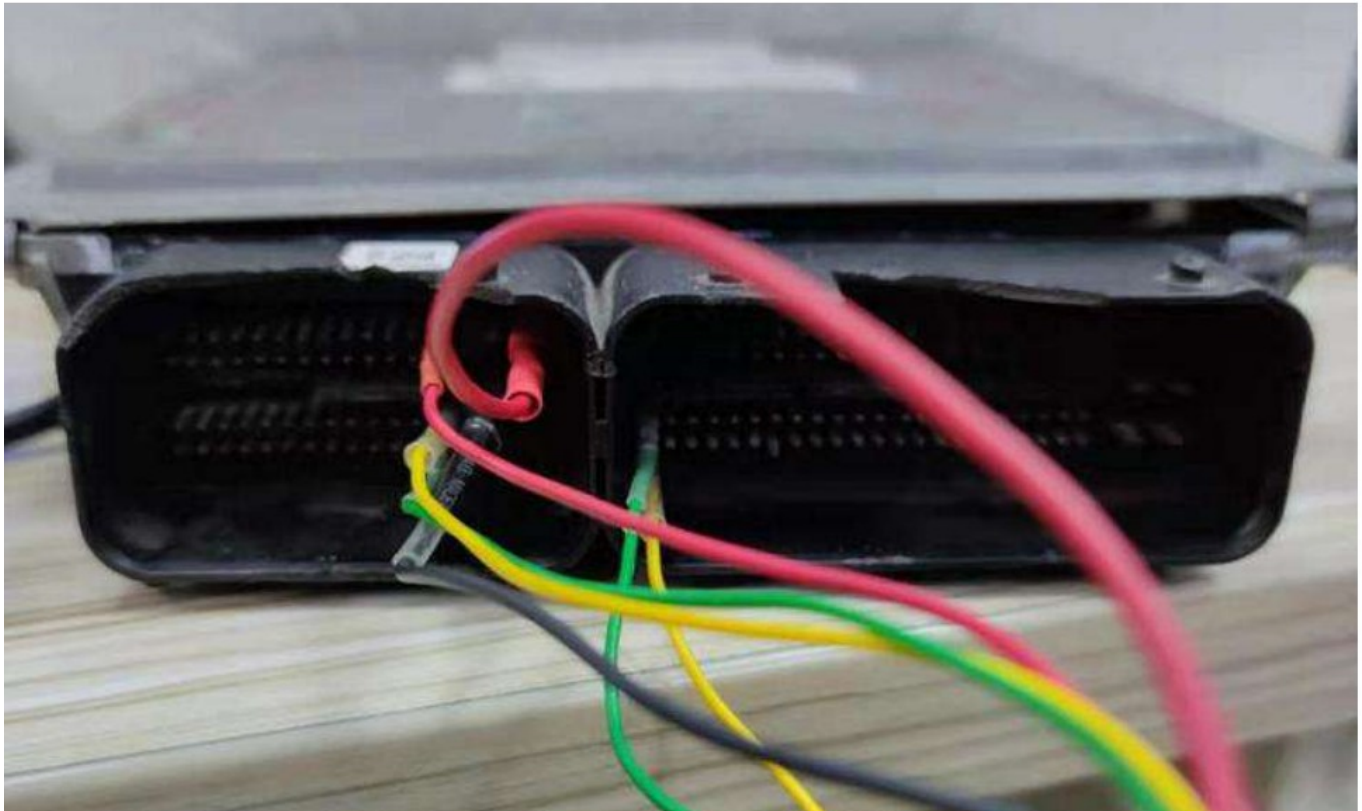
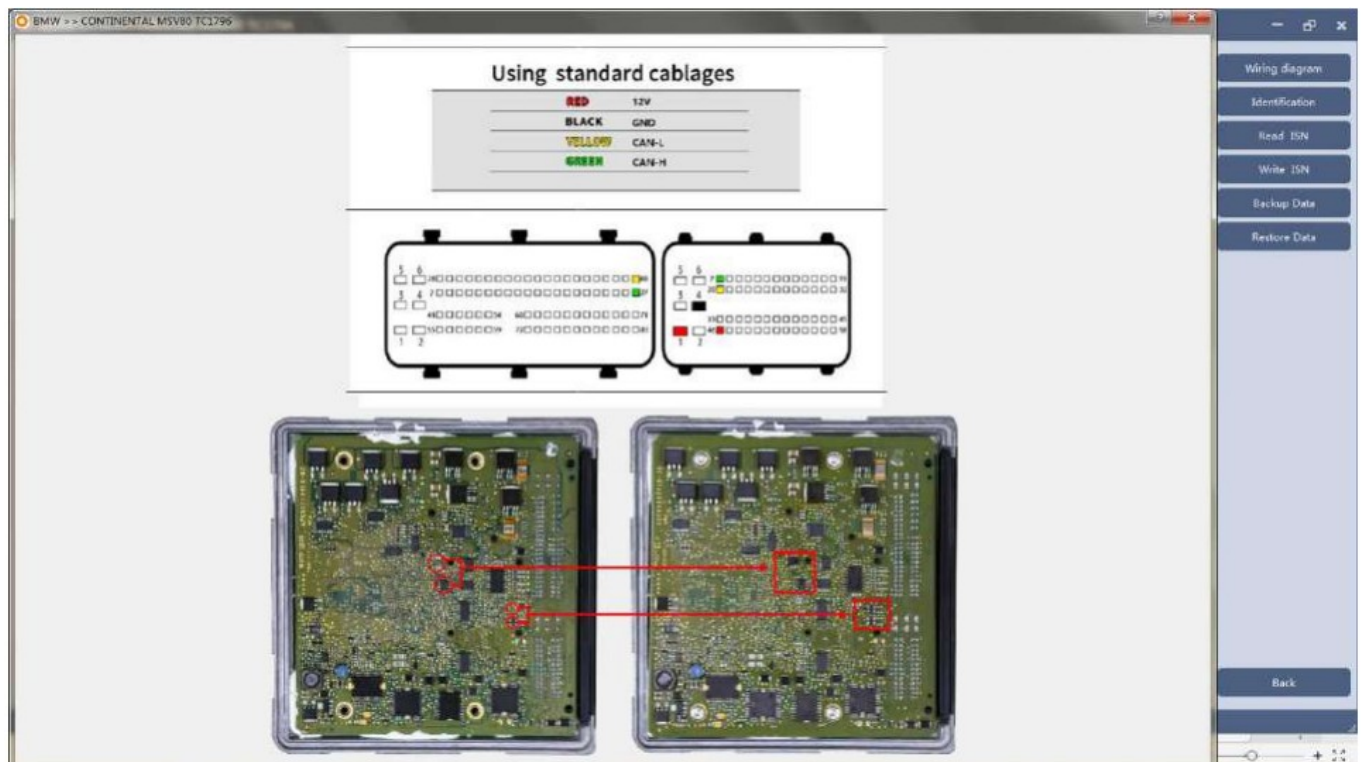
- 1.1 Check the ecu version first



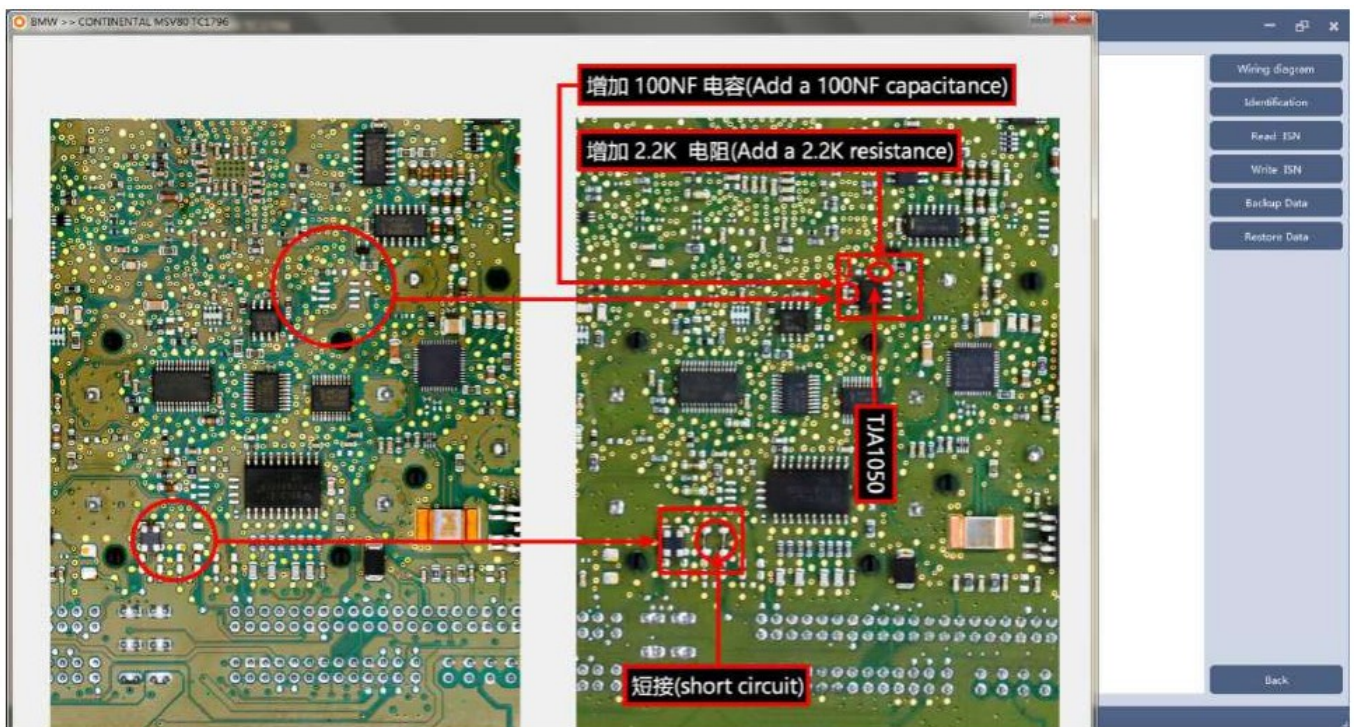
1.2 Open software and find the correct option(choose MSV80 here)



1. 3 When the wires of the adapter is connected only according to the first wiring diagram, only the ISN can be read. At this time, other functions such as writing ISN will fail.



1.4 In second diagram, Need to remove ecu cover and add a 2.2K resistor, a 100NF capacitor and a TJA1050 communication chip, and short circuit in place that marked in diagram. The complete operation can only be carried out after the wiring here is completed(Need to plug 12V to AT200).



Identification ECU(Confirm whether ECU information can be recognized normally at this time)

(There is no VIN information in our ECU. Cgdi BMW can be used to program ECU and modify VIN information)



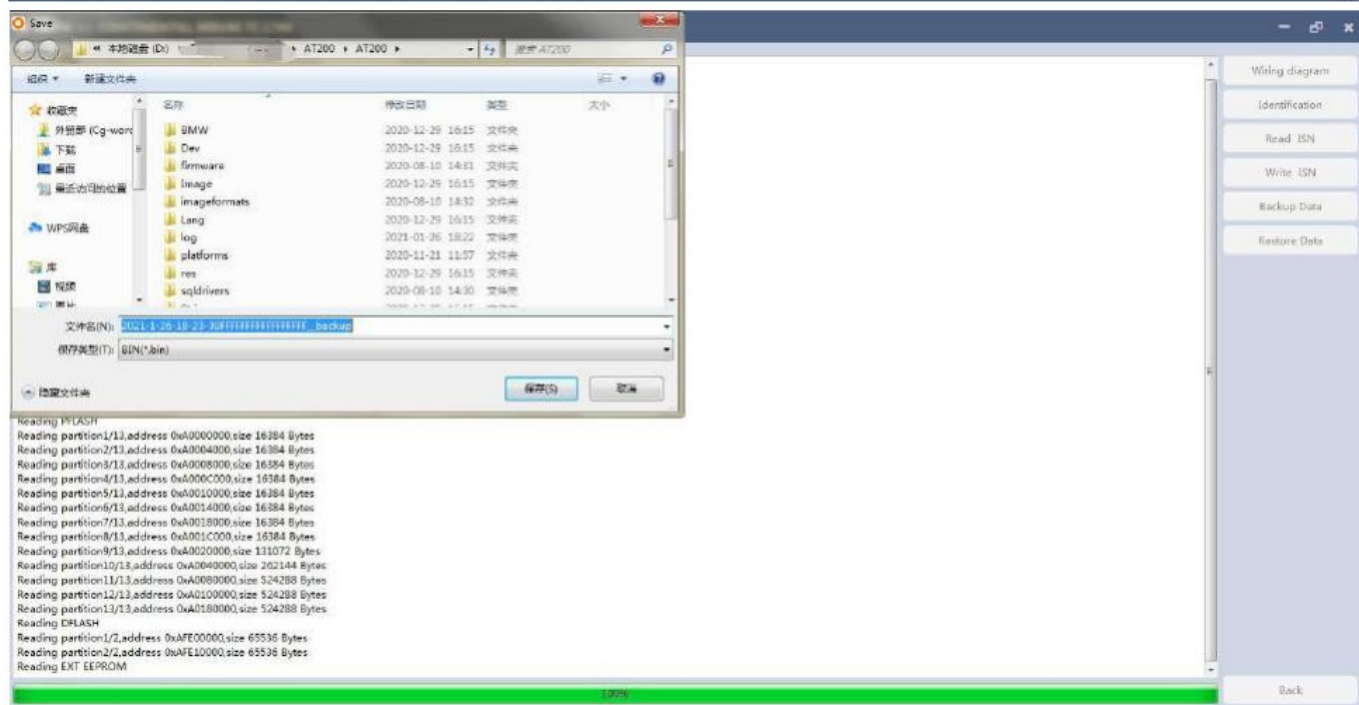
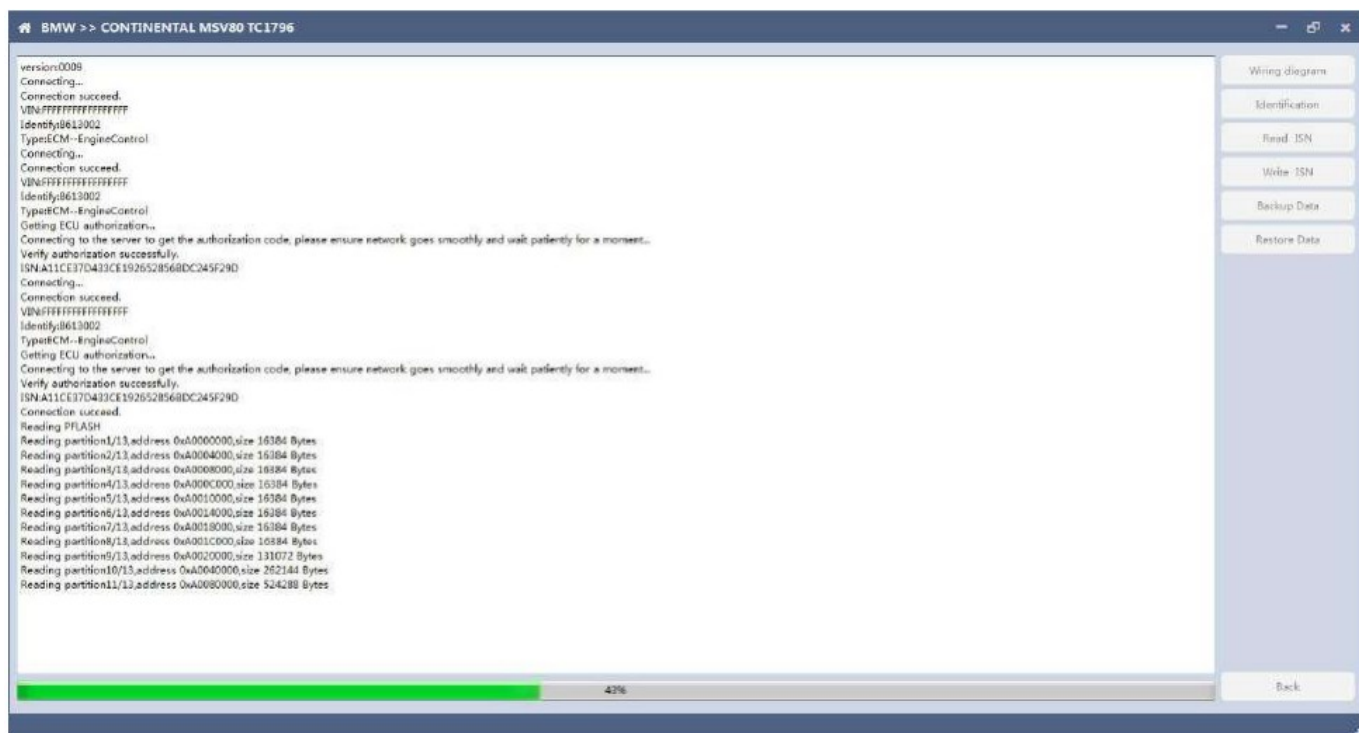
Read ISN

Click "Read ISN" button to read ISN(Please note: this operation need to be connected internet.)



Write ISN

4.1 Click "Write ISN" button, it will start to read and need to save it(saved in at200 folder by default).



4.2 After saving successfully, a pop-up window will pop up to modify the ISN. Modify the ISN needed ,click OK and will start to write the ISN information.

BMW >> CONTINENTAL MSV80 TC1796

Connecting...
Connection succeed.
VIN:FFFFFFFFFFFFFFF
Identify:8612002
Type:ECM--EngineControl
Connecting...
Connection succeed.
VIN:FFFFFFFFFFFFFFF
Identify:8612002
Type:ECM--EngineControl
Getting ECU authorization...
Connecting to the server to get the authorization code, please ensure network goes smoothly and wait patiently for a moment...
Verify authorization successfully.
ISNA11CE37D433CE1926528568DC245F29D
Connecting...
Connection succeed.
VIN:FFFFFFFFFFFFFFF
Identify:8612002
Type:ECM--EngineControl
Getting ECU authorization...
Connecting to the server to get the authorization code, please ensure network goes smoothly and wait patiently for a moment...
Verify authorization successfully.
ISNA11CE37D433CE1926528568DC245F29D
Connection succeed.
Reading PFLASH
Reading partition1/13,address 0xA0000000,size 16384 Bytes
Reading partition2/13,address 0xA0004000,size 16384 Bytes
Reading partition3/13,address 0xA0008000,size 16384 Bytes
Reading partition4/13,address 0xA000C000,size 16384 Bytes
Reading partition5/13,address 0xA0010000,size 16384 Bytes
Reading partition6/13,address 0xA0014000,size 16384 Bytes
Reading partition7/13,address 0xA0018000,size 16384 Bytes
Reading partition8/13,address 0xA001C000,size 16384 Bytes
Reading partition9/13,address 0xA0020000,size 131072 Bytes
Reading partition10/13,address 0xA0040000,size 202144 Bytes
Reading partition11/13,address 0xA0080000,size 324288 Bytes
Reading partition12/13,address 0xA0100000,size 324288 Bytes
Reading partition13/13,address 0xA0180000,size 324288 Bytes
Reading DFLASH
Reading partition1/2,address 0xAFE00000,size 65536 Bytes
Reading partition2/2,address 0xAFE10000,size 65536 Bytes
Reading EXT EEPROM
Backup data successfully

Please Input

Original ISN: A11CE37D433CE1926528568DC245F29D

New ISN: A11CE37D433CE1926528568DC245F29D

OK

Wiring diagram

Identification

Read ISN

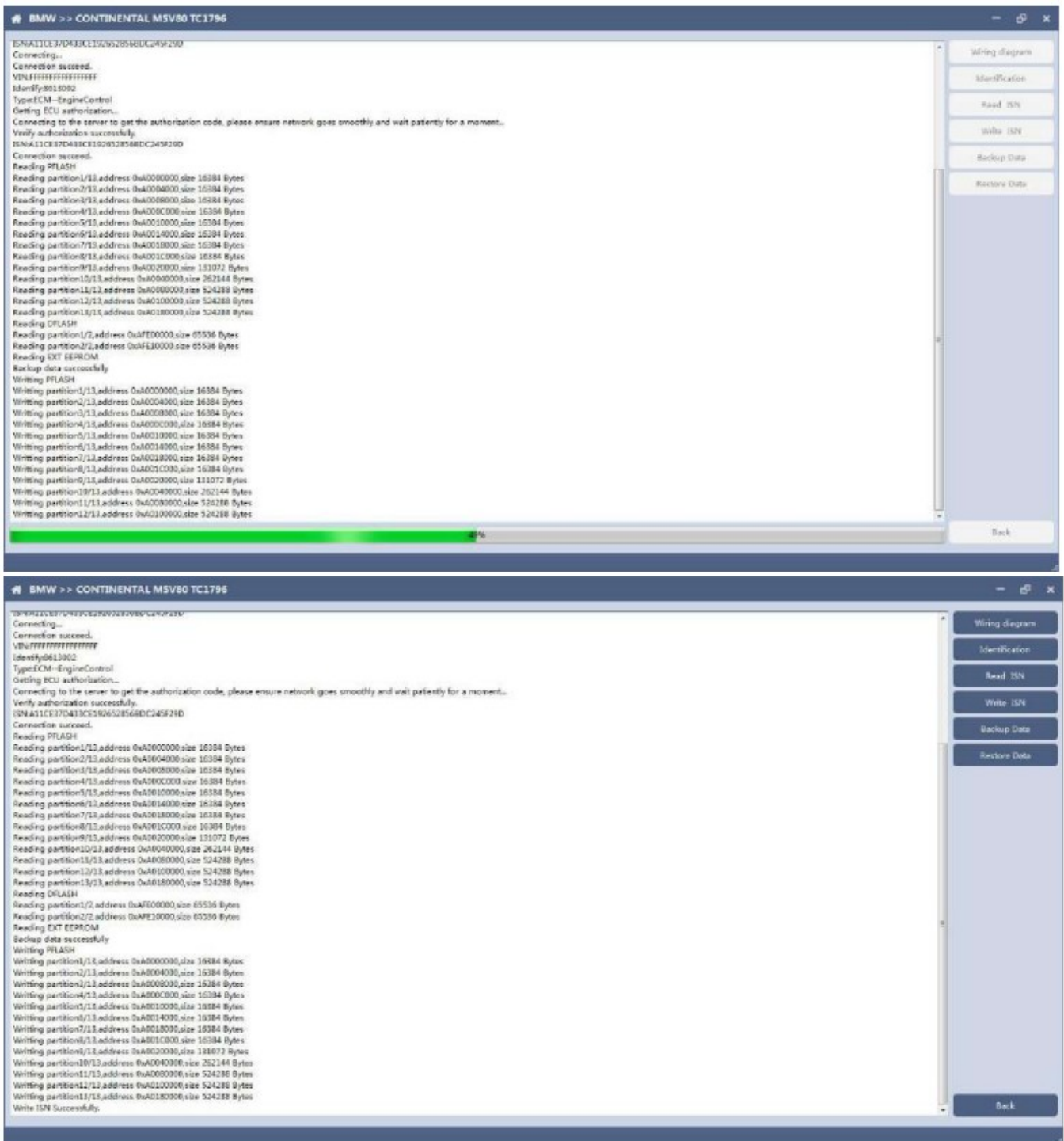
Write ISN

Backup Data

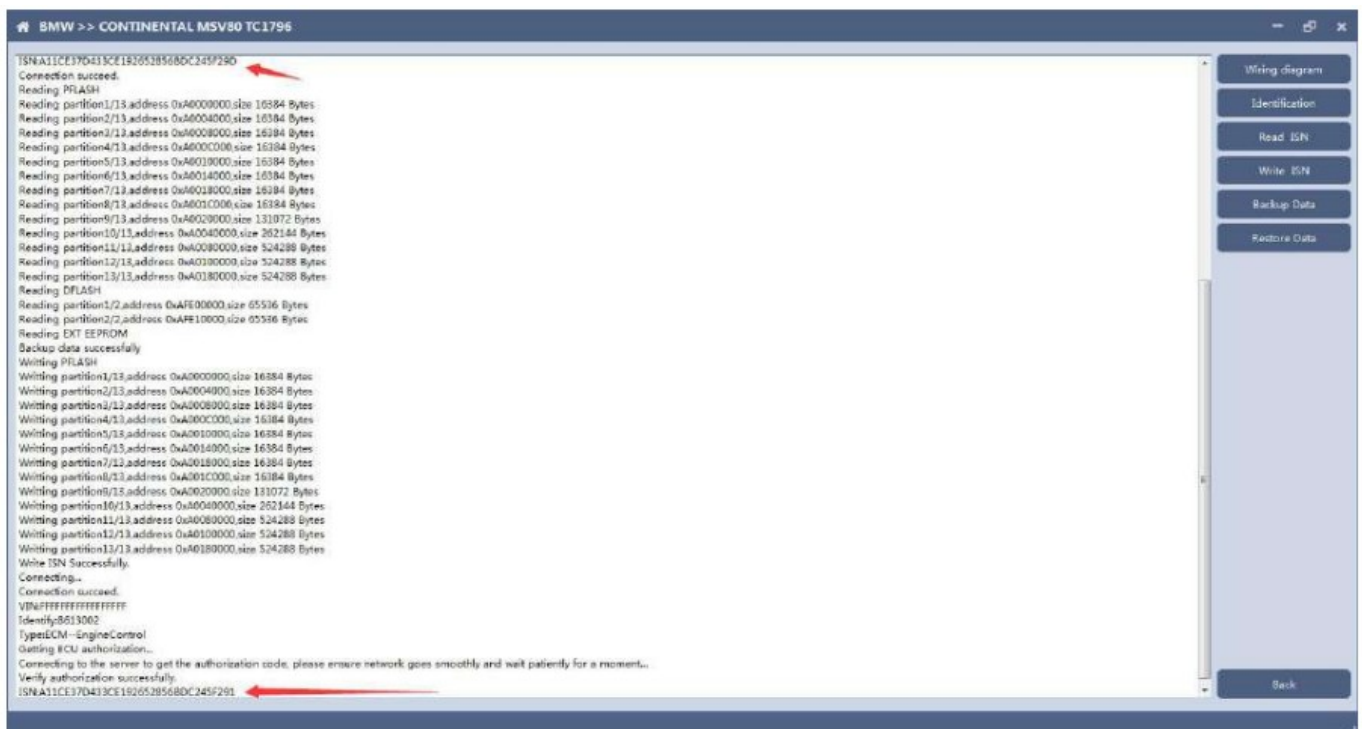
Restore Data

Back

100%

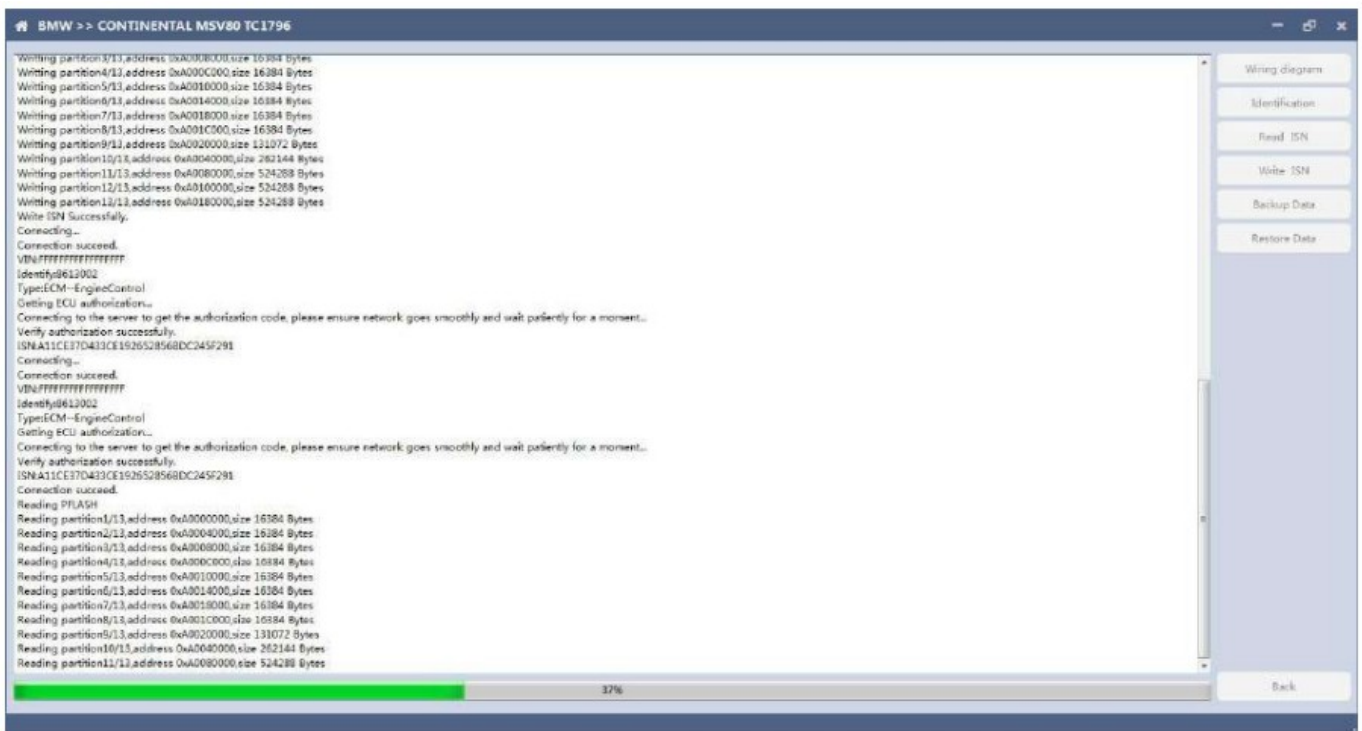


4.3 Read ISN again to check if write success.



Backup data

5.1 Click "Backup data" button to read data and save it (Please note: this operation need to be connected internet.)



5.2 Software will ask to save the data after backup success (saved in at200 folder by default).

BMW >> CONTINENTAL MSV80 TC1796

Writing partition1/1, address 0xA0020000, size 131072 Bytes
Writing partition10/1, address 0xA0040000, size 262144 Bytes
Writing partition11/1, address 0xA0080000, size 524288 Bytes
Writing partition12/1, address 0xA0100000, size 524288 Bytes
Writing partition13/1, address 0xA0180000, size 524288 Bytes
Write ISN Successfully.
Connecting...
Connection succeed.
VIN: #FFFFFFFFFFFFFFF
Identify: 8613002
Type: ECM--EngineControl
Getting ECU authorization...
Connecting to the server to get the authorization code, please ensure network goes smoothly and wait patiently for a moment...
Verify authorization successfully.
ISNA11CE37D433CE1928528568DC249F291
Connecting...
Connection succeed.
VIN: #FFFFFFFFFFFFFFF
Identify: 8613002
Type: ECM--EngineControl
Getting ECU authorization...
Connecting to the server to get the authorization code, please ensure network goes smoothly and wait patiently for a moment...
Verify authorization successfully.
ISNA11CE37D433CE1928528568DC249F291
Connection succeed.
Reading FLASH
Reading partition1/1, address 0xA0080000, size 16384 Bytes
Reading partition2/1, address 0xA0094000, size 16384 Bytes
Reading partition3/1, address 0xA00B0000, size 16384 Bytes
Reading partition4/1, address 0xA00C0000, size 16384 Bytes
Reading partition5/1, address 0xA00E0000, size 16384 Bytes
Reading partition6/1, address 0xA0014000, size 16384 Bytes
Reading partition7/1, address 0xA0018000, size 16384 Bytes
Reading partition8/1, address 0xA001C000, size 16384 Bytes
Reading partition9/1, address 0xA0020000, size 131072 Bytes
Reading partition10/1, address 0xA0040000, size 262144 Bytes
Reading partition11/1, address 0xA0080000, size 524288 Bytes
Reading partition12/1, address 0xA0100000, size 524288 Bytes
Reading partition13/1, address 0xA0180000, size 524288 Bytes
Reading DF.LASH
Reading partition1/2, address 0xAFED0000, size 65536 Bytes
Reading partition2/2, address 0xAFE10000, size 65536 Bytes
Reading EXT EEPROM
Backup data successfully

Wiring diagram

Identification

Read ISN

Write ISN

Backup Data

Restore Data

Back

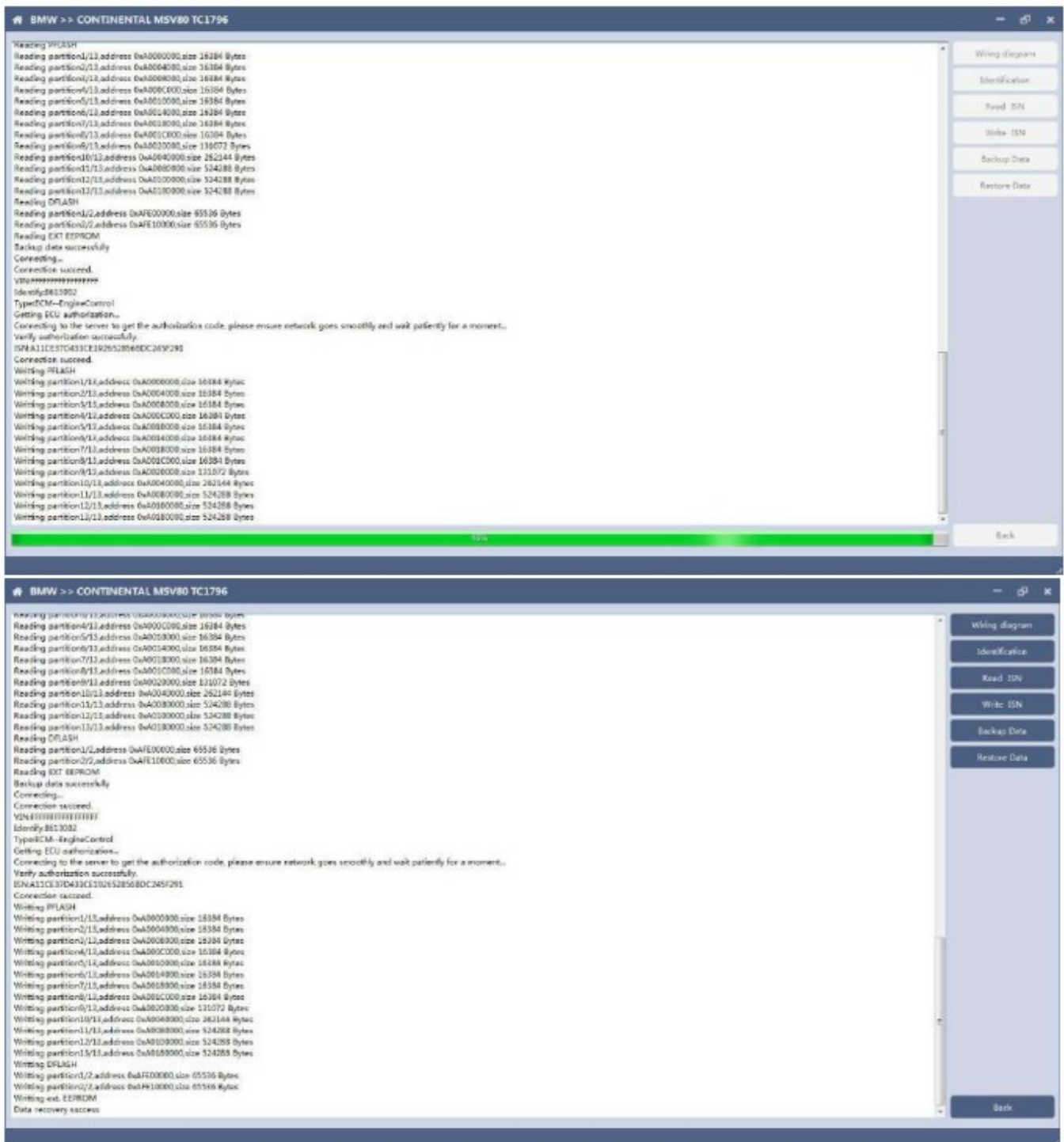
confirm

?

Data is about to be written. This operation will overwrite the original data of the ECU. Please ensure that the data is backed up. Whether to continue?

Yes

No



SIEMENS

Website: www.cgsulit.com/

Youtube video:

AT200 – BMW MSV80 Engine Computer Read and Write ISN and Module Cloning.
<https://www.youtube.com/watch?v=xvshuuGMXY&feature=youtu.be>

Documents / Resources

AT200 MSV80 read/write ISN and back up data

1. Connect

2. Read/Write/Backup



[SIEMENS AT200 MSV80 Read Write ISN and Backup Data](#) [pdf] User Guide

AT200 MSV80 Read Write ISN and Backup Data, AT200, MSV80 Read Write ISN and Backup Data, ISN and Backup Data, Backup Data, Data

References

- [Automotive Diagnostic Tools](#)

[Manuals+](#).