



sielinvest S1-R Proximity Reader User Manual

[Home](#) » [sielinvest](#) » sielinvest S1-R Proximity Reader User Manual 

sielinvest

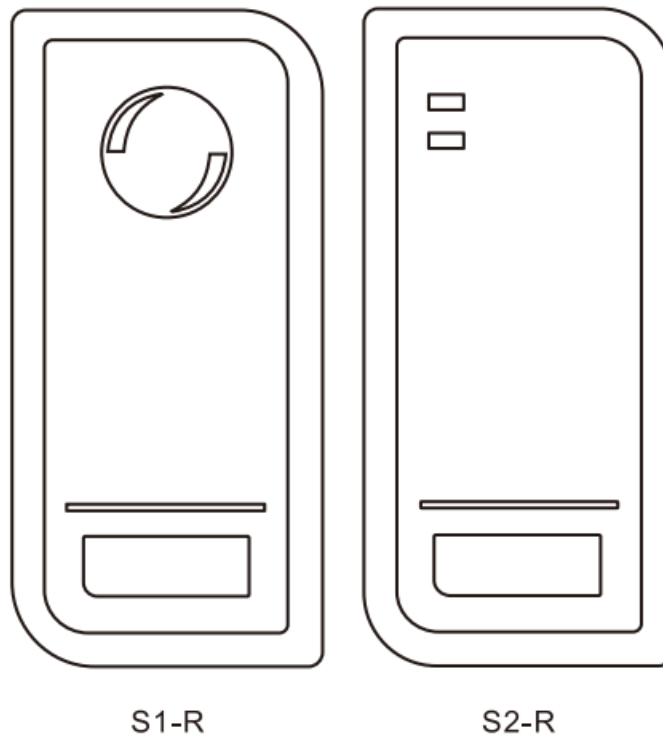


Proximity Reader
User Manual

Contents

- [1 S1-R Proximity Reader](#)
- [2 Introduction](#)
- [3 Specifications](#)
- [4 Installation](#)
- [5 Functions Table Sheet](#)
- [6 Packing List](#)
- [7 Documents / Resources](#)
- [7.1 References](#)

S1-R Proximity Reader



Introduction

It is a slim Wiegand output proximity reader compatible with any Wiegand input controller.

The reader is fully potted, and can function at extreme temperatures (-40°C~60°C), which allows it is capable to be mounted either indoor or outdoor.

\$1/S2-R: Read 125KHz EM + HID cards

\$1/S2-R EM: Read 125KHz EM card

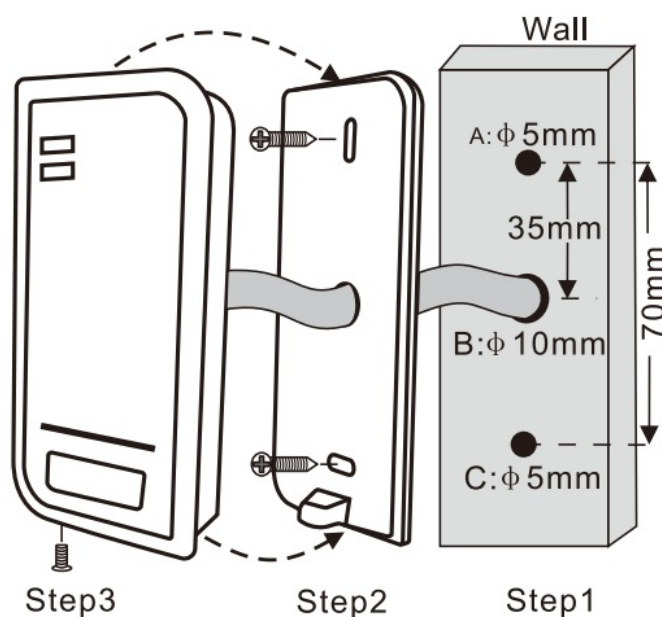
(Please use the appropriate card according to your device version)

Specifications

Model	S1/S2-R	S1/S2-R EM
Frequency	125KHz	
Card Type	EM + HID	EM
Operation Voltage	9-18V DC	
Standby Current	-C- 25mA	
Read Range	Up to 2.8 inches (7cm)	
Output Format	26 bits Wiegand (default) 26-37 bits available upon request	
Operating Temperature	-40°C-60t (-40 F-140 F)	
Operating Humidity	10% to 95% RH	
Color	Black (White optional)	
Index of Protection	IP66	
Dimension(H x W x T)	103 x 48 x 20 mm	
Net Weight	100g	
Shipment Weight	150g	

Installation

- Drill 2 holes (A, C) on the wall for the screws and one hole for the cable
- Knock the rubber bungs to the holes (A, C)
- Fix the back cover on the wall with 2 screws
- Thread the cable though the cable hole (B)
- Attach the unit to the back cover

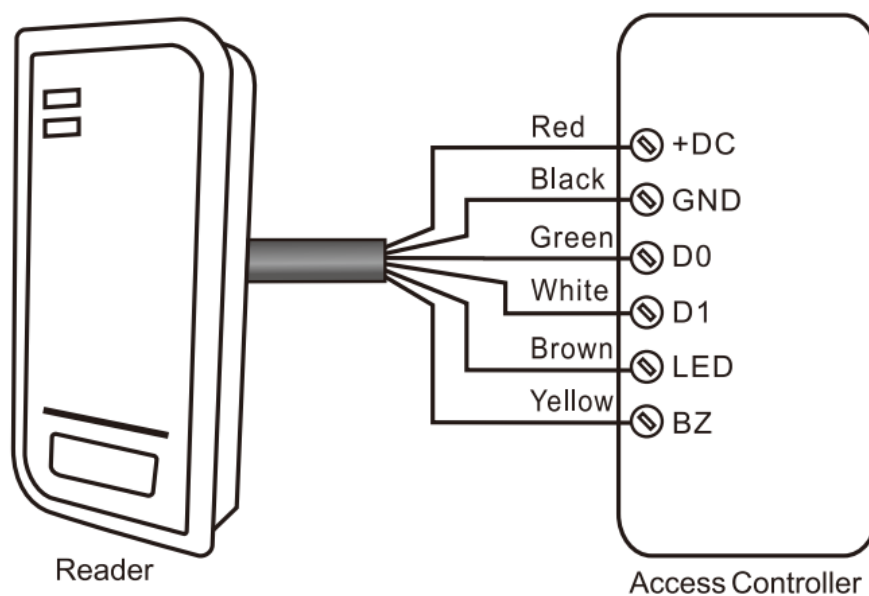


Wiring

Color	Function	Notes
Red	Power	+DC (9-18V DC)
Black	GND	Ground
Green	DO	Data 0
White	D1	Data 1
Brown	LED	Green LED Light Control
Yellow	Buzzer	Buzzer Control

(Remarks: Brown and Yellow wires are optional connections)

Connection Diagram



Functions Table Sheet

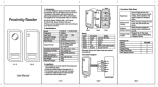
Read Card	The LED light will turn into Green, and the buzzer sounds a beep, at the meantime, the reader outputs the Wiegand signal
External LED ,Control	When the input voltage for LED is low, the LED will turn into Green
External Buzzer Control	When the input voltage for Buzzer is low, the Buzzer will sounds
Wiegand Data Output	Wiegand 26-37 bits range available, factory default setting is Wiegand 26 bits

Packing List

Name	Quantity
Reader	1
Manual	1
Screw Driver	1
Wall Fixing Plugs	2
Self Tapping Screws	2

sielinvest

Documents / Resources

	sielinvest S1-R Proximity Reader [pdf] User Manual S1-R Proximity Reader, S1-R, Proximity Reader, Reader
---	---

References

- [User Manual](#)

[Manuals+](#), [Privacy Policy](#)

This website is an independent publication and is neither affiliated with nor endorsed by any of the trademark owners. The "Bluetooth®" word mark and logos are registered trademarks owned by Bluetooth SIG, Inc. The "Wi-Fi®" word mark and logos are registered trademarks owned by the Wi-Fi Alliance. Any use of these marks on this website does not imply any affiliation with or endorsement.