



SIDE-POWER 8909C Control Panel Instruction Manual

[Home](#) » [SIDE-POWER](#) » SIDE-POWER 8909C Control Panel Instruction Manual 

Contents

- [1 SIDE-POWER 8909C Control Panel](#)
- [2 Product features](#)
- [3 Cut-out dimensions](#)
- [4 Installation](#)
- [5 Visual wiring diagram](#)
- [6 With Manual Main Switch](#)
- [7 General use](#)
- [8 Warranty Statement](#)
- [9 Documents / Resources](#)
 - [9.1 References](#)
- [10 Related Posts](#)



SIDE-POWER 8909C Control Panel



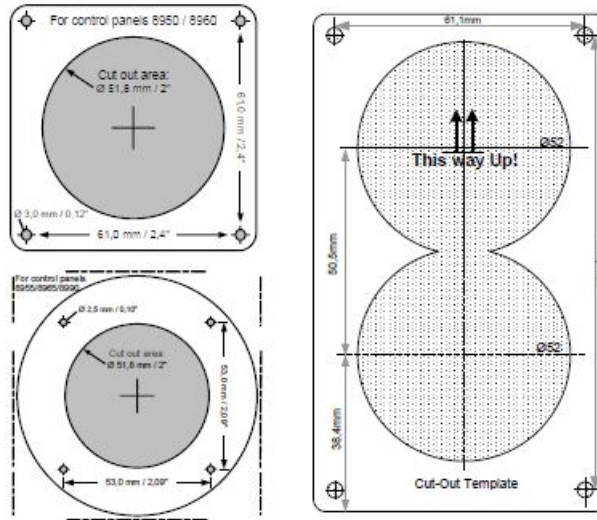
IMPORTANT!

This panel will only work with Side-Power electric thrusters with a built-in electronic control box and a 4/5 lead control cable system. These panels are waterproof from the front end when correctly installed. However, you must ensure that they can never be submerged in water as this might cause a short circuit and thereby causing the thruster to start unintendedly.

Product features



Cut-out dimensions



IMPORTANT!

Use only attached template!

Installation

Find a comfortable position for the panel where it does not obstruct or are obstructed by other controls. Use the enclosed cut-out pattern to mark the area. Cut out the circular area as shown on pattern.

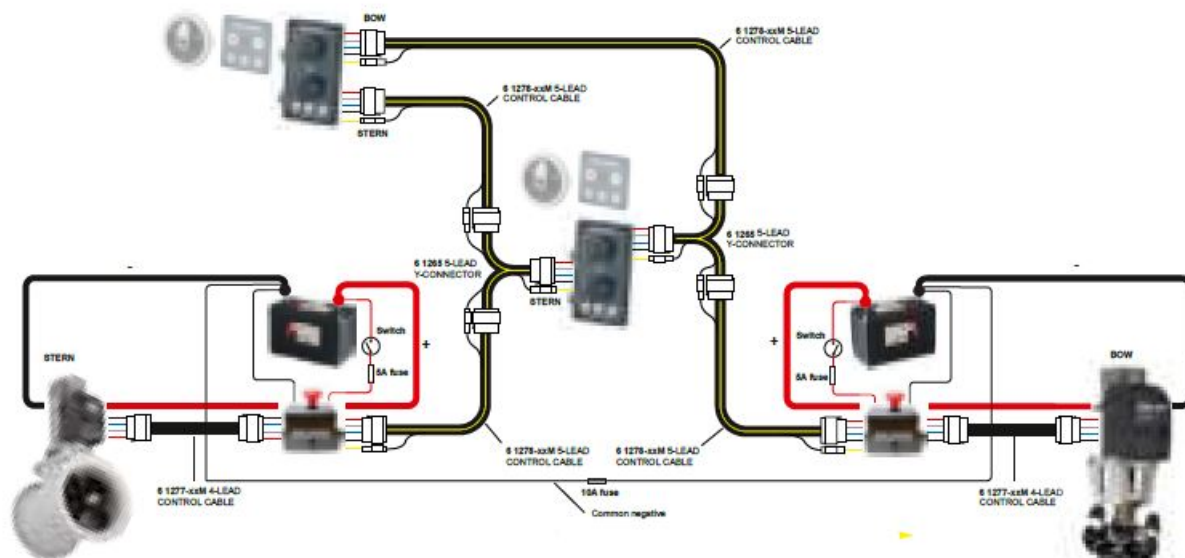
If the front surface around your cut-out is jagged or chipped, use a sealant to assist the gasket.

- Find a comfortable position for the panel where it does not obstruct or are obstructed by other controls. Use the enclosed cut-out pattern to mark the area. Cut out the circular area as shown on the pattern.
- If the front surface around your cut-out is jagged or chipped, use a sealant to assist the gasket.
- Put the panel (1) in place and screw in and tighten the four screws (3)
- Press gently each of the four corner clips (4) into their corner slot

Note! If the thruster runs the opposite way of the panel, swap positions of the grey and the blue control cables in one contact, either by the thruster or by the panel.

Visual wiring diagram

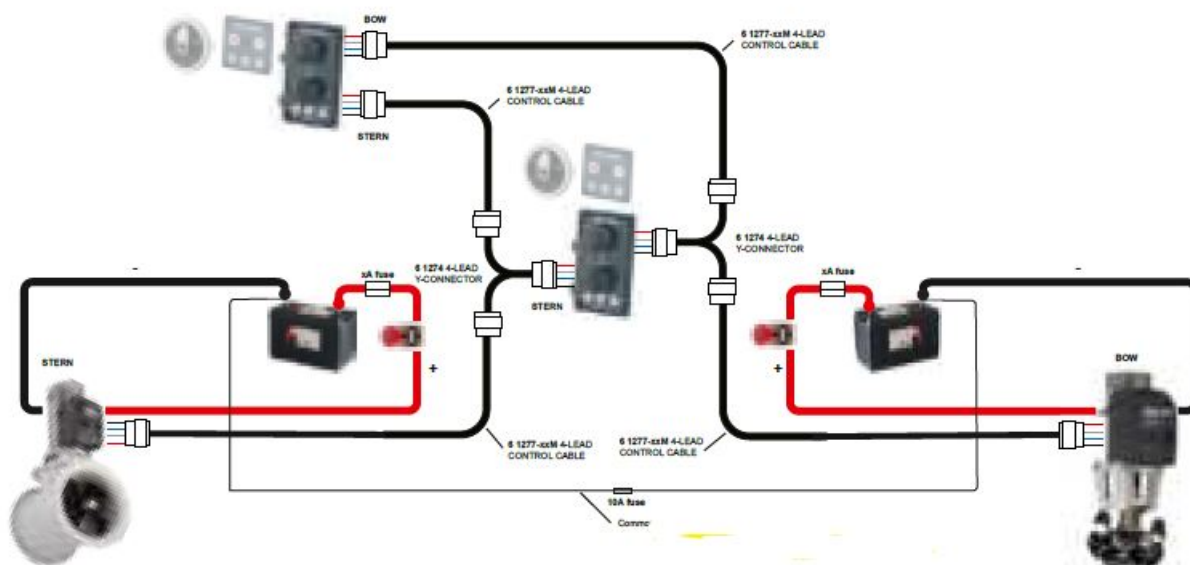
With Automatic Main Switch:



IMPORTANT!

Common negative **MUST** be wired when using control panels 8940 and 8909C if separate battery banks are installed. (Bow and Stern thrusters combined)

With Manual Main Switch



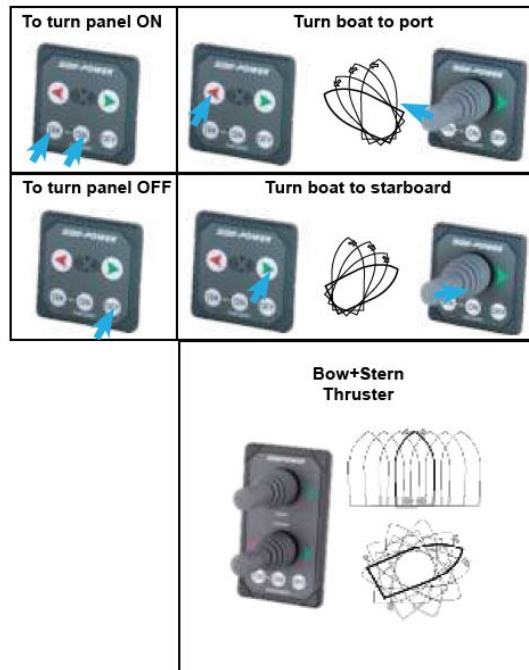
IMPORTANT!

Common negative **MUST** be wired when using control panels 8940 and 8909C if separate battery banks are installed. (Bow and Stern thrusters combined)

IMPORTANT! Very important to check the following with the main switch in off position:

After all electrical connections have been completed check with an ohmmeter that there is no electrical connection between electromotor body and the positive terminal on the motor and between the electromotor body and the negative (A1) terminal on the motor. If you feel unsure on how to perform this check, contact skilled personnel for guidance.

General use



How to use Side-Power thrusters

1. Turn main power switch for the bowthruster on. (Always turn off the main power switch when not onboard.)
2. Please take some time to exercise thruster usage in open water to avoid damages to your boat.
3. Turn the control panel on by pushing both “ON” buttons on the original Side-Power panel simultaneously. If another type of control is installed, engage the On/Off switch for the bowthruster.
4. Turn the bow in the desired direction by pushing the red button for port movement or the green button for starboard movement. If you have a joystick control, move it in the direction you wish the bow to move. Other controls like footswitches or toggle-switches on the throttle can be used. These are normally logically installed, so by engaging the port control, the bow goes port etc. In case of any doubts, try in open waters first.
5. Depending on the sideways speed of the bow, you must disengage the control device shortly before the bow is in the desired direction, as the boat will continue to move after stopping the bowthruster.

How to use a single stern thruster

Some boats might however have installed a single stern thruster because of space limitation in the bow. In this case the stern thruster is used in the same way as a single bow thruster (see above) for moving the boat's stern.

How to use a bow and stern thruster combined

The combination of a bow and stern thruster offers total manoeuvrability to the boat and the opportunity to move the bow and the stern separately from each other. This enables you to move the boat sideways in both directions and to turn the boat around its own axis staying at the same place.

- Again, if in doubt, try in open water first!
- If original Side-Power panel is used, the panel shuts off automatically approx 6-9 minutes after last use.

Warranty Statement

1. The equipment manufactured by Sleipner Motor AS (The “Warrantor”) is warranted to be free from defects in workmanship and materials under normal use and service.


2. This Warranty is in effect for of two years (Leisure Use) or one year (Commercial use) from the date of purchase by the user. Proof of purchase must be included, to establish that it is inside the warranty period.
3. This Warranty is transferable and covers the product for the specified time period.
4. In case any part of the equipment proves to be defective, other than those parts excluded in paragraph 5 below, the owner should do the following:
 1. Prepare a detailed written statement of the nature and circumstances of the defect, to the best of the Owner's knowledge, including the date of purchase, the place of purchase, the name and address of the installer, and the Purchaser's name, address and telephone number;
 2. The Owner should return the defective part or unit along with the statement referenced in the preceding paragraph to the warrantor, Sleipner Motor AS or an authorized Service Centre, postage/shipping prepaid and at the expense of the Purchaser;
 3. If upon the Warrantor's or Authorized Service Centre's examination, the defect is determined to result from defective material or workmanship, the equipment will be repaired or replaced at the Warrantor's option without charge, and returned to the Purchaser at the Warrantor's expense;
 4. no refund of the purchase price will be granted to the Purchaser, unless the Warrantor is unable to remedy the defect after having a reasonable number of opportunities to do so. Prior to refund of the purchase price, Purchaser must submit a statement in writing from a professional boating equipment supplier that the installation instructions of the Installation and Operation Manual have been complied with and that the defect remains;
 5. warranty service shall be performed only by the Warrantor, or an authorized Service Centre, and any attempt to remedy the defect by anyone else shall render this warranty void.
5. There shall be no warranty for defects or damages caused by faulty installation or hook-up, abuse or misuse of the equipment including exposure to excessive heat, salt or fresh water spray, or water immersion except for equipment specifically designed as waterproof.
6. No other express warranty is hereby given and there are no warranties which extend beyond those described in section 4 above. This Warranty is expressly in lieu of any other expressed or implied warranties, including any implied warranty of merchantability, fitness for the ordinary purposes for which such goods are used, or fitness for a particular purpose, and any other obligations on the part of the Warrantor or its employees and representatives.
7. There shall be no responsibility or liability whatsoever on the part of the Warrantor or its employees and representatives for injury to any person or persons, or damage to property, loss of income or profit, or any other consequential or resulting damage or cost which may be claimed to have been incurred through the use or sale of the equipment, including any possible failure or malfunction of the equipment, or part thereof.
8. The Warrantor assumes no liability for incidental or consequential damages of any kind including damages arising from collision with other vessels or objects.
9. This warranty gives you specific legal rights, and you may also have other rights which vary from country to country.

Worldwide sales and service



www.side-power.com

Documents / Resources

	<p>SIDE-POWER 8909C Control Panel [pdf] Instruction Manual 8950, 8955, 8960, 8965, 8940, 8909C, 8909C Control Panel, Control Panel</p>
--	--

References

- [↔ Sleipner - Ocean born. Tech bred.](#)