



**Contents** [ [hide](#) ]

- [1 SICCE XStream SDC Propeller Pump](#)
- [2 IMPORTANT SAFETY INSTRUCTIONS](#)
- [3 TECHNICAL DATA](#)
- [4 SPARE PARTS](#)
- [5 COMPONENTS](#)
- [6 INSTALLATION](#)
- [7 CONTROLLER USE AND PUMPS REGULATION](#)
- [8 HOW TO USE THE CONTROLLER XStream SDC](#)
- [9 WI-FI SET UP](#)
- [10 BACK UP BATTERY](#)
- [11 REGULAR MAINTENANCE](#)
- [12 ONLINE HELP](#)
- [13 PRODUCT REGISTRATION](#)
- [14 WARRANTY](#)
- [15 CHECKLIST BEFORE USING APP](#)
- [16 FAQ](#)
- [17 Documents / Resources](#)
  - [17.1 References](#)



## **SICCE XStream SDC Propeller Pump**



## SICCE CORPORATE

SICCE CORPORATE



You Tube™



## IMPORTANT SAFETY INSTRUCTIONS

### WARNING

To guard against injury, basic safety precautions should be observed, including the following.

### READ AND FOLIOW ALL SAFETY INSTRUCTIONS

**WARNING:** To avoid possible elecbic shock, special care should be taken since water is employed in the use of aquarium equipment. For each of the following situations, do not attempt repairs by yourself. Return the appliance to an authorized service facility for service or discard the appliance.

1. CAUTION: If the appliance shows any sign of abnormal water leakage, immediately unplug it from the power source.
2. Carefully examine the appliance after installation. It should not be plugged in if there is water on parts not intended to be wet.

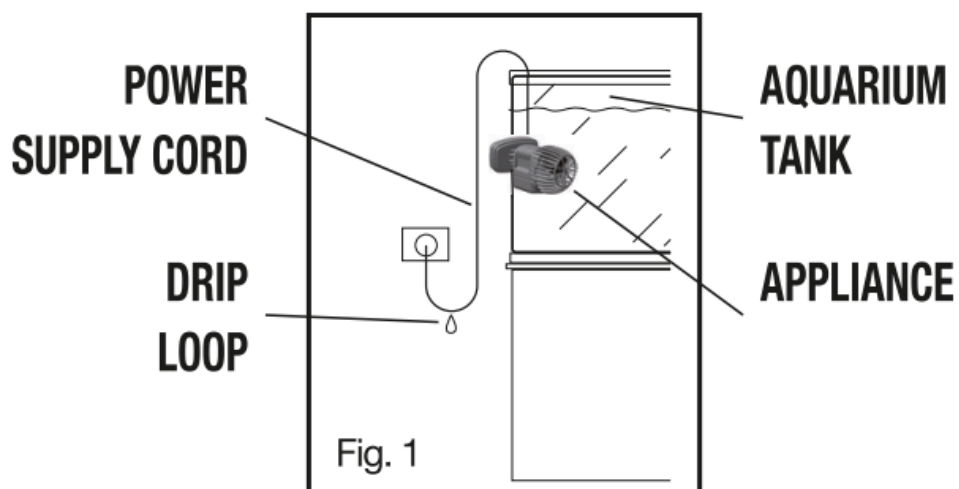
3. Do not operate any appliance if it has a damaged cord or plug, or if it doesn't work properly or has been dropped or damaged in any manner.
4. To avoid the possibility of the appliance plug or receptacle getting wet, position aquarium stand and tank or the fountain to one side of a wall-mounted receptacle to prevent water from dripping onto the receptacle or plug.  
A "drip-loop" (fig. 1) should be arranged by the user for each cord connecting an aquarium appliance to a receptacle. The "drip-loop" is the part of the cord below the level of the receptacle or the connector if an extension cord is used, which prevents water travelling along the cord and coming in contact with the receptacle.  
If the plug or socket does get wet, DON'T unplug the cord. Disconnect the fuse or circuit breaker that supplies power to appliance. Then unplug and examine for presence of water in the receptacle.
5. Close supervision is necessary when any appliance is used by near children.
6. To avoid injury, do not contact moving parts or hot parts such as heaters, reflectors, lamp bulbs and similar.
7. Always unplug an appliance from an outlet when not in use, before putting on or taking off parts and before cleaning. Never yank cord to pull plug from outlet.  
Grasp the plug and pull to disconnect.
8. Do not use an appliance for other than intended use. The use of attachments, not recommended or sold by the manufacturer of the appliance, may cause an unsafe condition.
9. Do not install or store the appliances where it will be exposed to the weather or to temperatures below freezing.
10. Make sure an appliance mounted on a tank is securely installed before operating it.
11. Read and observe all the important notices of the appliance.
12. If an extension cord is necessary, a cord with a proper rating should be used. A cord rated for less amperes or watts than the appliance rating may overheat. Care should be taken to arrange the cord so that it will not be tripped over or pulled.
13. This appliance has a polarized plug (one blade is wider than othe?. As a safety feature, this plug will fit in a polarized outlet only one way. If the plug does not fit fully in the outlet, reverse the plug. If it still does not fit, contact a qualified electrician. Never use with an extension cord unless plug can be fully inserted. Do no attempt to defeat this safety feature.

**WARNING:** To reduce the risk of electric shock, use only on portable self-contained

fountains no larger than 5 feet in any dimension.

**CAUTION:** The appliance is to be connected to a circuit that is protected by a Ground Fault Circuit Interrupter.

**SAVE THESE INSTRUCTIONS**



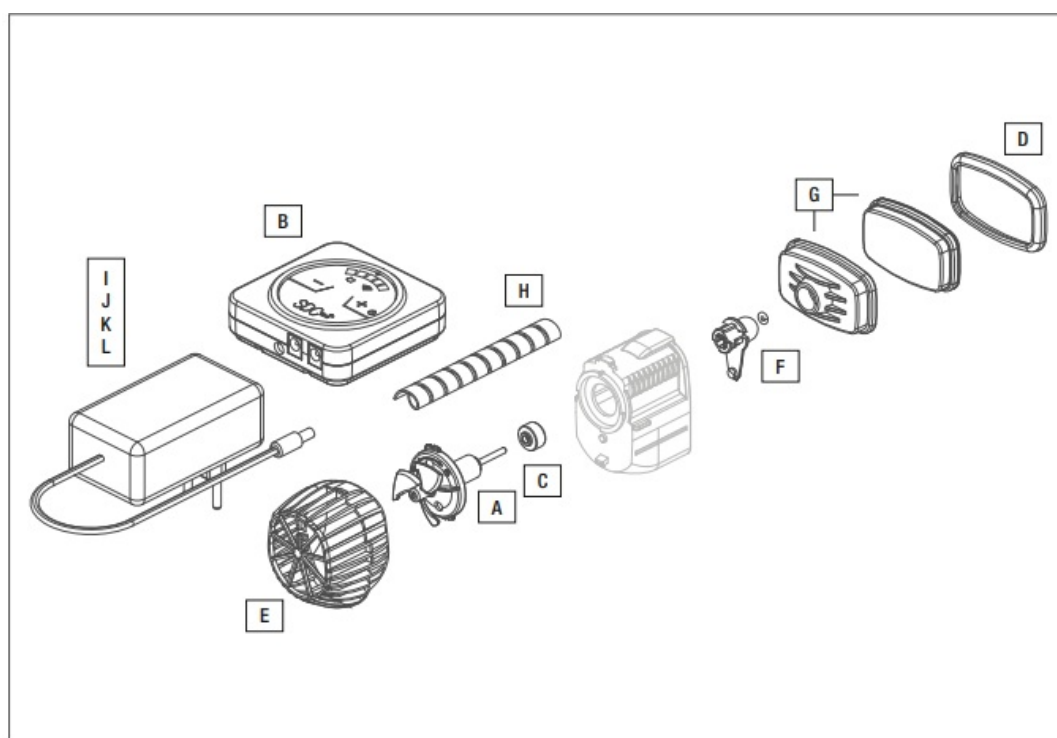
**TECHNICAL DATA**

Q max	220 – 240 V · 50 Hz	1000 – 8500 l/h
	110 – 120 V · 60 Hz	270 – 2250 US gph
Watt	220 – 240 V · 50 Hz	12 W
	110 – 120 V · 60 Hz	12 W
Cable length		2,2 m · 6.0 ft

**SPARE PARTS**

Rotor + stainless steel shaft	A	12 V	SGR0239
Controller	B		SKT0224/A
Bottom bearing with O-ring	C		SPL0120 (2 pcs.)

Anti-vibration rubber case	D		SPL0088
Grid with O-ring	E		SPL0086
Rotating mount + bearing	F		SPL0105
Magnet mount	G		SPL106
Chewsafe spiral cord cover	H		SPL0089
AC/DC power adaptor (EU)	I		SKT0220
AC/DC power adaptor (US)	J		SKT0221
AC/DC power adaptor (UK)	K		SKT0222
AC/DC power adaptor (AU)	L		SKT0223



Thank you for choosing the SICCE XStream SDC The XStream SDC propeller pump is the latest addition to the cloud based family of interconnected Wi-Fi aquarium devices introduced by SICCE. It is ideal to be used in advanced marine tanks to create the most natural flow patterns. With the FREE download of ContrALL, the end user can choose between several preset programs, create a custom program or schedule to suit the needs of their aquarium. As an option to controlling through the app, the water flow rate

of the XStream SDC may also be adjusted directly using the attached controller. XStream SDC has been designed and made in Italy to rigorous quality standards on components and production.

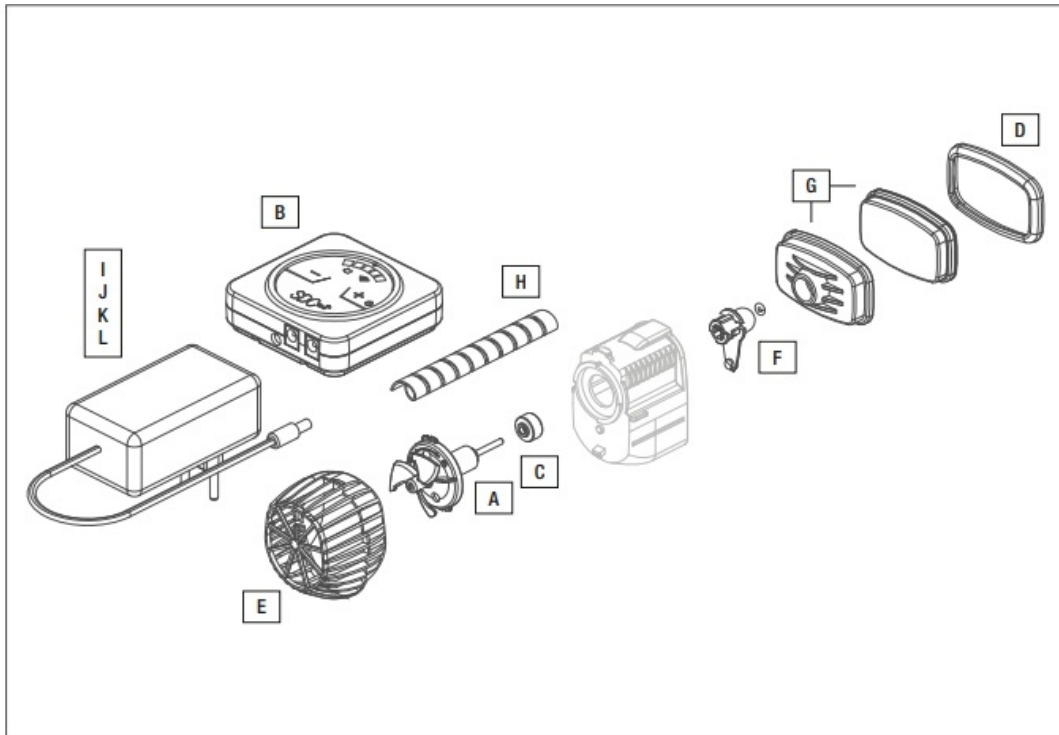
## **IMPORTANT SAFETY INFORMATION**

### **Please read carefully.**

XStream SDC range are made in conformity with the national and international security laws.

1. Always isolate the pump from the mains electricity before installing or carrying out any maintenance. Power to the pump must be supplied through a Residual Current Device (RCD) with a rated residual operating current not exceeding 30mA.
2. This pump is designed to be used indoors and is not suitable for any outdoor applications.
3. Before connecting the pump to the electricity supply, check there is no damage to the cord or plug.
4. The pump has a type Z cable link. The cable and the plug cannot be substituted or repaired; in case of damage to the cable, the entire pump must be replaced.
5. ATTENTION: do not operate any appliance if it has a damaged cord or plug, if it is malfunctioning, or if it has been dropped or damaged in any way.
6. Never operate the pump without water inside the impeller chamber or with liquids at a temperature higher than 95° F / 35° C. 7) Do not use the pump with corrosive and abrasive liquids.
7. Do not use the pump for uses different (i.e. in bathroom or other applications) to those for which it has been designed.
8. This pump requires adult supervision.
9. Avoid closeness with blades, sharp objects or other magnets to prevent accidental injuries as the magnets of the support attract metal objects and other magnets with high force.
10. The magnets can provoke permanent damages to electronic devices and to other objects that are sensitive to magnetic field such as pacemakers, credit cards and keys: always keep them at least 30 cm (12 inches) distance.

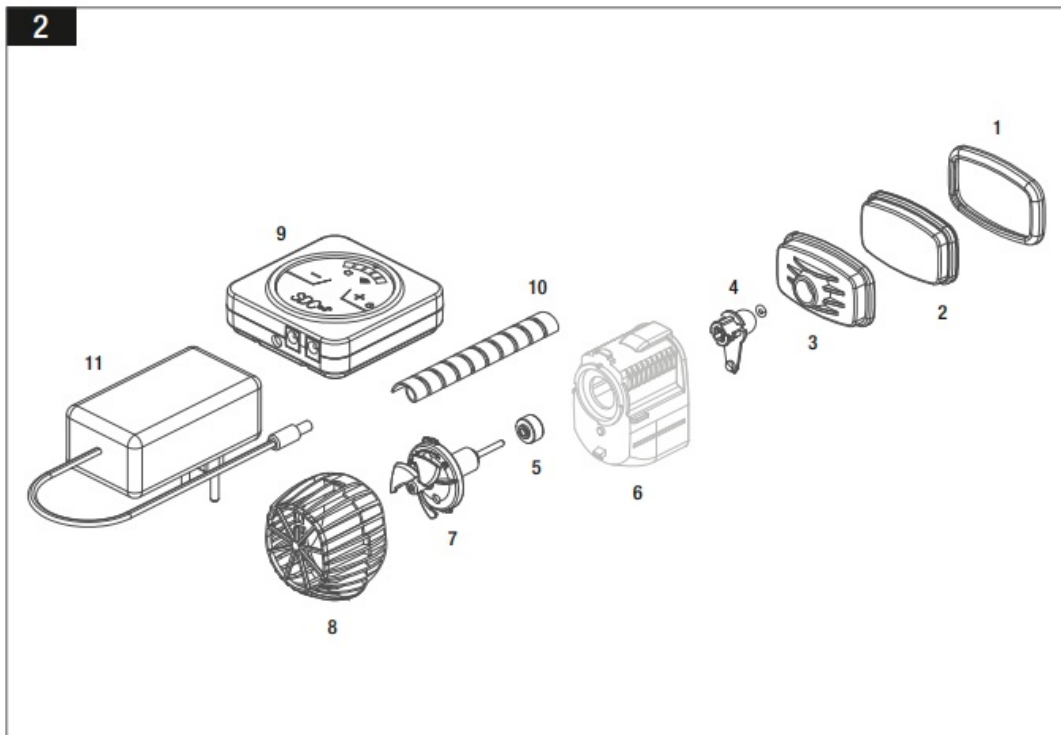
11. The magnets could loose partially or completely their attracting power if exposed to temperature higher than 50° C (122° F).
12. Always leave a drip-loop in the pump cable to prevent water running down the cable and reaching the power source (pic. 1).



13. Avoid taking the pump by the cord during the installation or maintenance.
14. Do not try to attach directly the two magnets holder because the magnetic attraction is very high. Hold them only on the external sides paying attention not to put your hands or fingers in between.

## COMPONENTS

1. Anti-vibration rubber case
2. External magnet holder
3. Internal magnet holder
4. Shaft holder + o-ring
5. Ceramic bearing
6. Pump body
7. Rotor kit
8. Prefilter grid
9. Electronic controller
10. Chewsafe spiral cord cover
11. AC/DC power adaptor (pic. 2).



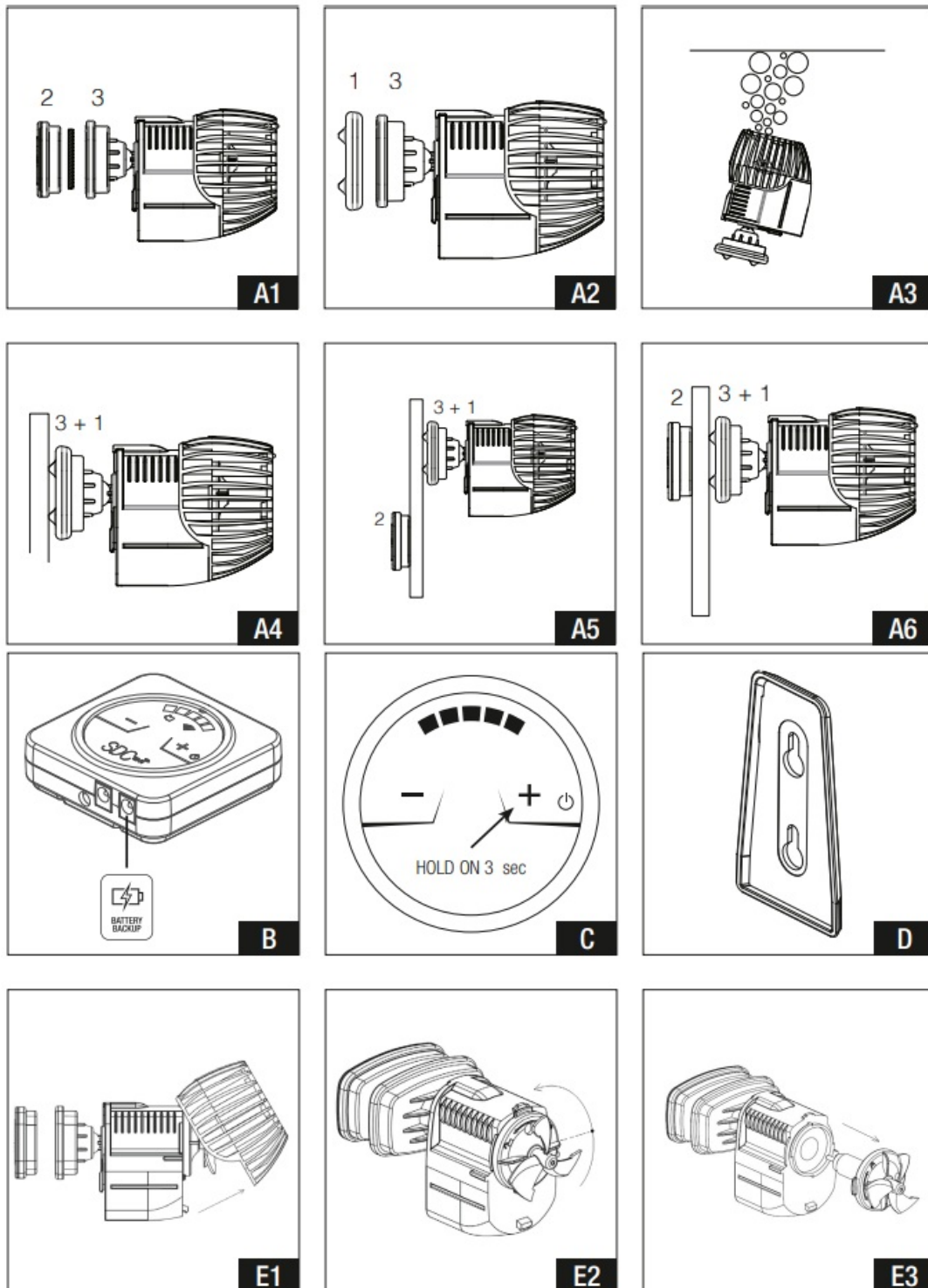
## INSTALLATION

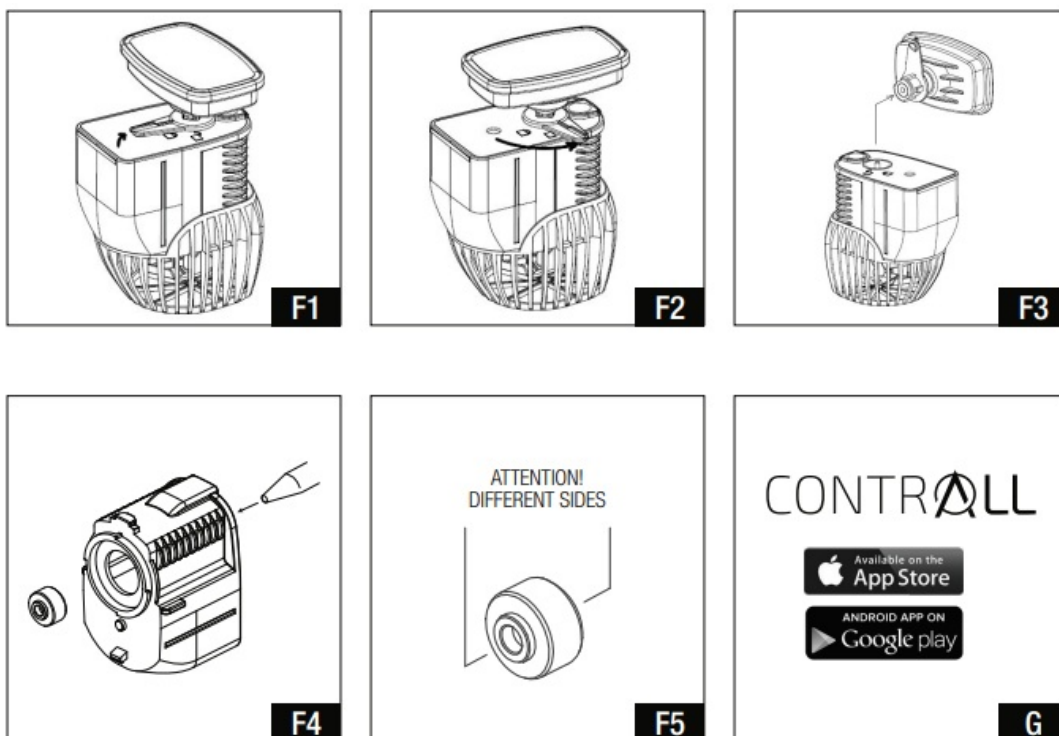
To install XStream SDC Pump proceed as follows:

1. Check the pump for damage.
2. Clean the aquarium glass where the pump will be attached.
3. Disconnect 2 from 3 removing the separator magnet (pic. A1).
4. Place the antivibration rubber case 1 on the magnet holder 3 (pic. A2).
5. Fully submerge the pump into the water keeping it in vertical position to release air trapped in the rotor and prevent some noise in the start up phase (pic. A3).
6. To avoid resonances and vibrations, do not put the pump directly in contact with the lateral surfaces nearby. Do not place the pump too close to sand and gravel at the bottom of the tank.
7. Place the pump in the desired location with holder 3 and the anti-vibration rubber case 1 adherent to the glass (pic. A4).
8. Attach the external magnetic support 2 to the tank at a 10 cm (3.93 inches) distance from the center of the internal support 3 (pic. A5). Drag it until feeling of the opposite magnetic force. Position the center of the supports 2 and 3 on the same axis (pic. A6).  
ATTENTION: Strong magnets. Use caution attaching the pump to the aquarium. Keep hands and fingers clear.
9. Turn the pump so that the flow is directed where desired.



10. Connect the pump cable to the controller's one, taking care to match it correctly, and tighten the ring nut.
11. Insert the power supply JACK type, on the left-hand side of the controller (to avoid errors, it does not enter the one on right). The right one has been designed to insert the back up battery case (optional) (pic. B).
12. Connect it to the electricity supply.
13. See the XStream SDC PROGRAMMING paragraph for pump operation





## CONTROLLER USE AND PUMPS REGULATION

By connecting the power supply to the controller, all the LEDs light up once. After about 20 seconds the WIFI symbol will start to flash slowly to indicate that it is ready and awaiting the set-up. If the controller has already been set-up, once powered, the WI FI automatically reconnects to the network and reloads the programs set in the CONTRALL APP.

## HOW TO USE THE CONTROLLER XStream SDC

To activate the pump, keep the right key (+) pressed for 3 “. The pump starts at 50% of the operating range. Pressing the keys (+) and ( - ) it is possible to increase or decrease the pump flow. Consequently, the luminous intensity of the 5 LEDs will vary. The pump symbol will light up in the color set via the CONTRALL app. The Wi-Fi symbol will flash blue slowly while waiting to be connected to the Wi-Fi network via the CONTRALL App. If the pump is managed via CONTRALL, it will not be possible to modify its operation using the controller. It will only be possible to switch it off by keeping the right key (+) pressed for 3 “.

The Controller supplied can only regulate the flow. It can only be powered with the included transformer and manages only the supplied pump. Any other use could irreparably damage the device and void the warranty.

## **WI-FI SET UP**

- CONTRALL App Free download
- Select MY DEVICES and tab on +
- Choose SICCE XSTREAM
- Read the text and then Confirm PROCEED
- Next: select the Wi fi network you wish to link the pump and the Wi-Fi psw.
- Give a name to your pump and confirm with DONE.

## **BACK UP BATTERY**

It is possible to connect to the controller, in the socket on the right, a pack of batteries (NOT SUPPLIED\*) that ensure the pump operation for up to 5 hours (variable duration depending on the capacity of the batteries). If you decide to equip XStream SDC with this additional protection system, you need to connect the battery pack (3 x 3.7 V lithium batteries model 18650) to the appropriate socket in the controller. During normal operation, the battery pack will be kept charged by the controller itself and will enter in action when a temporary black out occurs, guaranteeing controller and pump operation for the estimated time. The pump, regardless of the programs set, will go to 50% of the power to increase its autonomy. At the same time, if the alerts have been activated in the CONTRALL App profile and the connected router is still functioning, the lack of electrical power will be notified. After a few minutes, the Wi-Fi module will turn off to extend the batteries life. When the batteries life is about to run out, the pump will shut off to prevent damage to them. When power is restored, everything will resume as before.

\*In SICCE accessory range you can purchase the specific battery box with a connection cable to plug in the controller. The batteries (3 lithium 3.7 V model 18650) must be purchased separately from your dealer.

2-year Warranty for Controller, Power adaptor and electronic components.

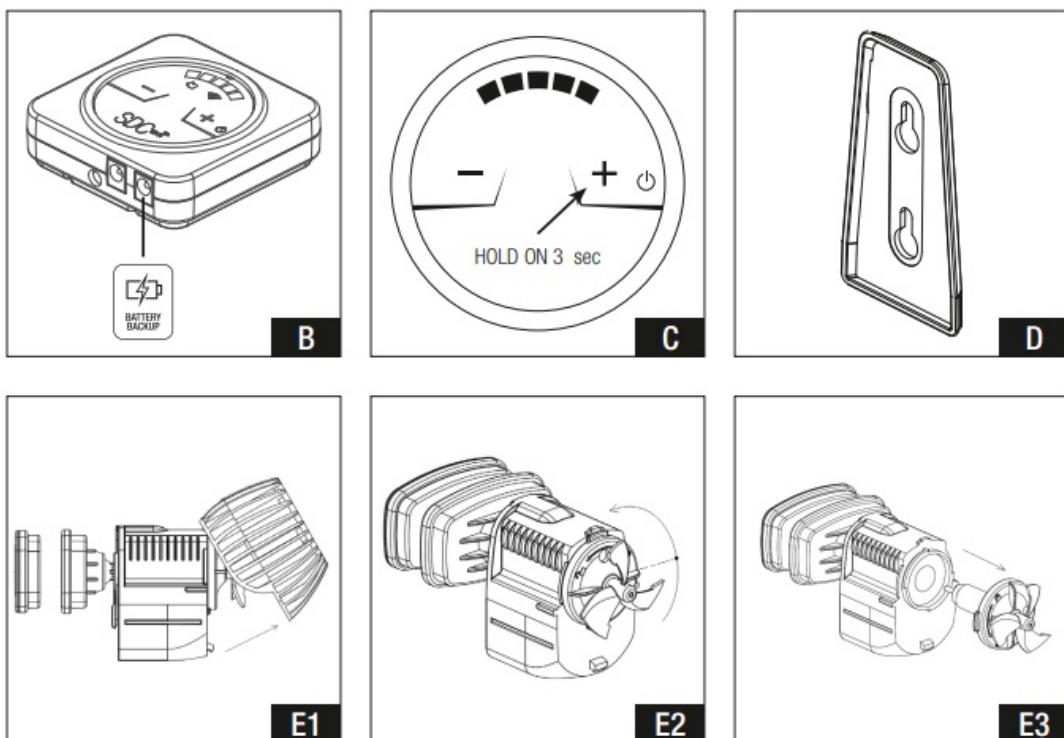
## **REGULAR MAINTENANCE**

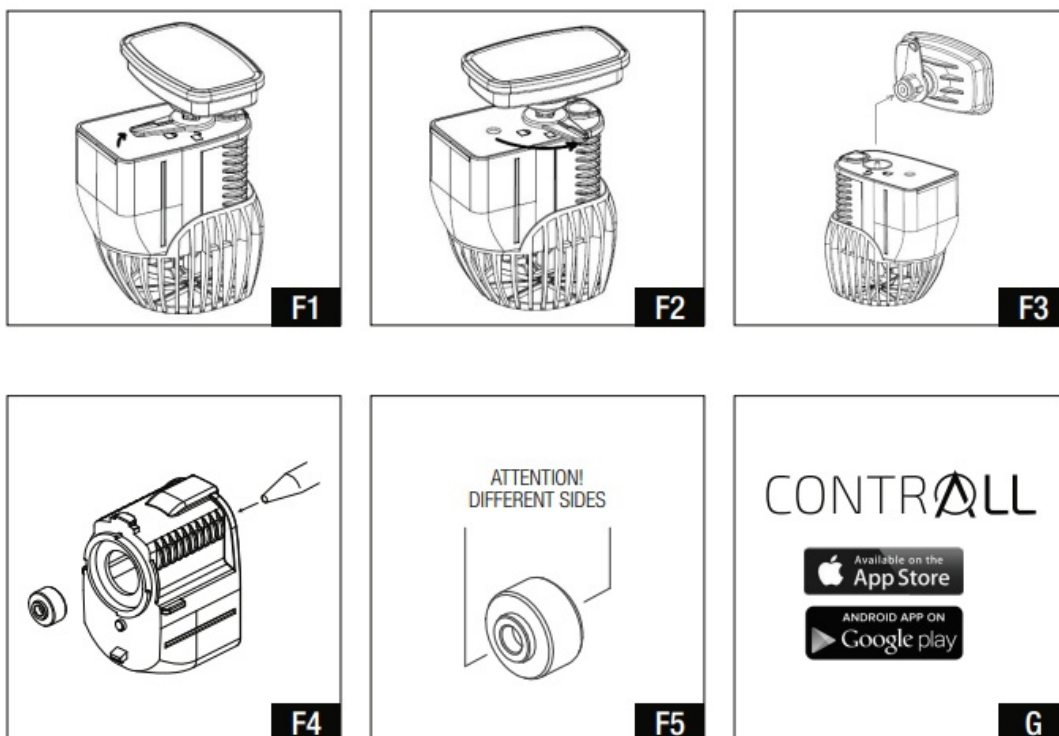
For the periodic maintenance, unplug the pump from the electric outlet/socket and remove the pump from the tank. Clean the pump and the rotor at regular intervals. Lime build up or heavy detritus in the water may necessitate more frequent cleaning. Remove the prefilter grid 8 from the pump 6 with light pressure to the sides by pulling it down (pic.

E1). Rotate the front counterclockwise and remove the rotor 7 (pic. E2-E3). Carefully clean the pump's components with fresh water or using a soft brush with soap or vinegar. Rinse all parts well before returning the pump to the tank. After cleaning, reassemble all components. SICCE products are designed for a long life and high, reliable service. Nevertheless, wear over time can create a little noise even after regular maintenance. Replacement parts are available.

## ADDITIONAL MAINTENANCE

1. Remove the plug from the electrical socket and then completely remove the pump from the water.
2. Lift the lever slightly (pic. F1) and turn it 90° anticlockwise (pic. F2). Pull to remove components 3 and 4 (pic. F3) from the back of the pump. Remove the prefilter grid and the rotor kit (pic. E1-E3), with the aid of a pen, push from the back towards the front to take out the ceramic bearing 5 (pic. F4). Pay attention on his positioning to then replace it correctly (pic. F5).
3. Clean the ceramic bearing 5 with a soft brush to remove any residues or incrustations of salt or organic material, taking care not to remove it from the rubber. Reassemble everything correctly before reconnecting the pump to the electrical socket.





## ONLINE HELP

Watch our tutorial videos on THE SICCE YOU TUBE official channel

[www.youtube.com/user/SICCEspa](http://www.youtube.com/user/SICCEspa)

## INSTRUCTIONS FOR THE CORRECT DISCHARGE OF THE PRODUCT ACCORDING TO EU DIRECTIVE 2002/96/EC

When used or broken, the product does not have to be discharged with the other waste. It can be delivered to the specific electric waste collection centers or to dealers who give this service. Discharge separately an electric tool avoid negative consequences for the environment and for the Health and allows to regenerate the materials so to have a great saving of energy and resources.

## PRODUCT REGISTRATION

By registering the product online in the “register the product” section on the website [www.sicce.com](http://www.sicce.com), and filling in the required data, you will activate the “special online warranty” on the group rotor for 6 months from the date of purchase, cash register receipt will validate the registration. In case of no registration, the warranty will be managed as follows.

## WARRANTY

This product is guaranteed against defects of materials and workmanship for a period of 3 years from the date of purchase, except the rotor kit. The warranty certificate must be filled in by the dealer and must accompany the pump if it is returned for repair, along with the cash register receipt or similar document. The warranty covers the replacement of the defective parts. In case of improper use, tampering or negligence by the buyer or user, the guarantee is void and expires immediately. The guarantee is also void in absence of the cash register receipt or similar document. The shipping cost to and from the factory, or the repair station, have to be paid by the buyer. FIND OUT HOW TO GET YOUR PRODUCT GUARANTEED FOR 5 YEARS: to improve our service and our clients' satisfaction, SICCE offers the possibility of adding a 2 years extension to the warranty by simply registering your product on our website [www.sicce.com](http://www.sicce.com) in "Sicce for you/Product registration". Fill-in the form and upload the product's purchase receipt. After having correctly inserted all your data, complete the warranty extension request.

## **CHECKLIST BEFORE USING APP**

- Check the distance between the device and the wireless router (Wi-Fi network). A long distance may weaken the signal strength and take a long time to record the device, in worst scenario the installation may fail.
- To check the WI-FI connection, make sure that the WI-FI icon is on.
- The device only supports 2.4 GHz Wi-Fi networks. To check the frequency of your network, you need to contact your internet service provider or refer to your wireless router manual.
- SICCE Srl is not responsible for any problems relating to the network connection or for failures, malfunctions or errors caused by the network connection.
- SICCE Srl is not responsible for any problems relating to the network connection or for failures, malfunctions or errors caused by the network connection.
- In case connecting the device to the Wi-Fi network does not succeed, it is possible that the device is too far from the router. Buy a repeater (range extender) to increase the intensity of the Wi-Fi signal.
- The Wi-Fi connection may not occur or be interrupted due to the environment of the home network.
- The network connection may not work properly depending on the Internet service provider.

- The surrounding wireless environment may slow down the wireless network service.
- The device cannot be registered due to problems with wireless signal transmission.  
Disconnect the device and wait for about a minute before trying again.
- If the firewall on the wireless router is active, disable it or add an exception.
- The name of the wireless network (SSID) should be a combination of English letters and numbers. (do not use special characters).
- The smartphone user interface (IU) may vary depending on the operating system (OS), the manufacturer or following updates to the APP CONTRALL or the operating system itself.
- If the router security protocol is set to WEP, it may not be possible to set up the network. Change the protocol (WPA2 is the recommended one) and register again the product.

## CONTRALL APP INFOS

Periodic updates of the APP are recommended in order to take advantage of any improvements to the service and the application itself.

### INITIAL SCREEN

- MY DEVICES: these are the single devices registered and manageable individually.
- MY SMART SYSTEMS: it is possible to group together a series of individual devices, for example 2 XSTREAM SDC pumps, a SYNCRA SDC pump and a pump for skimmer PSK SDC and create a system to which to assign a distinctive name. In case you want to manage multiple aquariums, this function allows you to control them more immediately and efficiently. It will be possible to switch off and switch on all devices by pressing a single button and schedule FEED TIME.
- NOTIFICATIONS: in this session the received notifications will be automatically recorded.
- PROFILE: within this session it is recommended to activate the NOTIFICATIONS, to adapt the units of measurement to the country system, to give consent to the newsletter to receive updates and communications, to select the desired language.



# CONTRALL APP



## **SICCE S.r.l.**

Via V. Emanuele, 115 – 36050 Pozzoleone (VI) – Italy

Tel. +39 0444 462826 – Fax +39 0444 462828 – P. IVA / VAT 02883090249

[info@sicce.com](mailto:info@sicce.com) · [www.sicce.com](http://www.sicce.com)

## **SICCE US Inc.**

[infous@sicce.com](mailto:infous@sicce.com) · [www.sicce-us.com](http://www.sicce-us.com)

## **SICCE AUSTRALIA Pty Ltd**

[info@sicce.com.au](mailto:info@sicce.com.au) · [www.sicce.com.au](http://www.sicce.com.au)

## **FAQ**

Q: Can I use the SICCE XStream SDC pump outdoors?

A: No, the pump is designed for indoor use only.

Q: How do I adjust the flow rate of the pump?


A: You can adjust the flow rate using the attached controller or through the ContrALL app.

Q: What should I do if the pump cord is damaged?

A: In case of damage to the cord, the entire pump must be replaced as the cable and plug cannot be repaired.

## **Documents / Resources**



	<a href="#">SICCE XStream SDC Propeller Pump [pdf]</a> Instruction Manual XStream SDC Propeller Pump, SDC Propeller Pump, Propeller Pump, Pu mp
--	---

## References

- [User Manual](#)

◆ Propeller Pump, pump, SDC Propeller Pump, SICCE, XStream SDC Propeller  
■ SICCE Pump

## Leave a comment

Your email address will not be published. Required fields are marked \*

Comment \*

Name

Email

Website

☐ Save my name, email, and website in this browser for the next time I comment.

Post Comment

## Search:

e.g. whirlpool wrf535swhz

Search

[Manuals+](#) | [Upload](#) | [Deep Search](#) | [Privacy Policy](#) | [@manuals.plus](#) | [YouTube](#)

This website is an independent publication and is neither affiliated with nor endorsed by any of the trademark owners. The "Bluetooth®" word mark and logos are registered trademarks owned by Bluetooth SIG, Inc. The "Wi-Fi®" word mark and logos are registered trademarks owned by the Wi-Fi Alliance. Any use of these marks on this website does not imply any affiliation with or endorsement.