

# SICCE Syncra pump User Manual

[Home](#) » [SICCE](#) » SICCE Syncra pump User Manual 

## Contents

- [1 SICCE Syncra pump](#)
- [2 SPARE PARTS](#)
- [3 TECHNICAL DATA](#)
- [4 IMPORTANT SAFETY INSTRUCTIONS](#)
- [5 SAFETY INSTRUCTIONS:](#)
- [6 USE AND MAINTENANCE INSTRUCTIONS](#)
- [7 PUMP INSTALLATION: USE AND REGULATION](#)
- [8 MAINTENANCE](#)
- [9 WARRANTY](#)
- [10 FIND OUT HOW TO GET YOUR PRODUCT GUARANTEED FOR 5 YEARS](#)
- [11 Documents / Resources](#)
  - [11.1 References](#)
- [12 Related Posts](#)



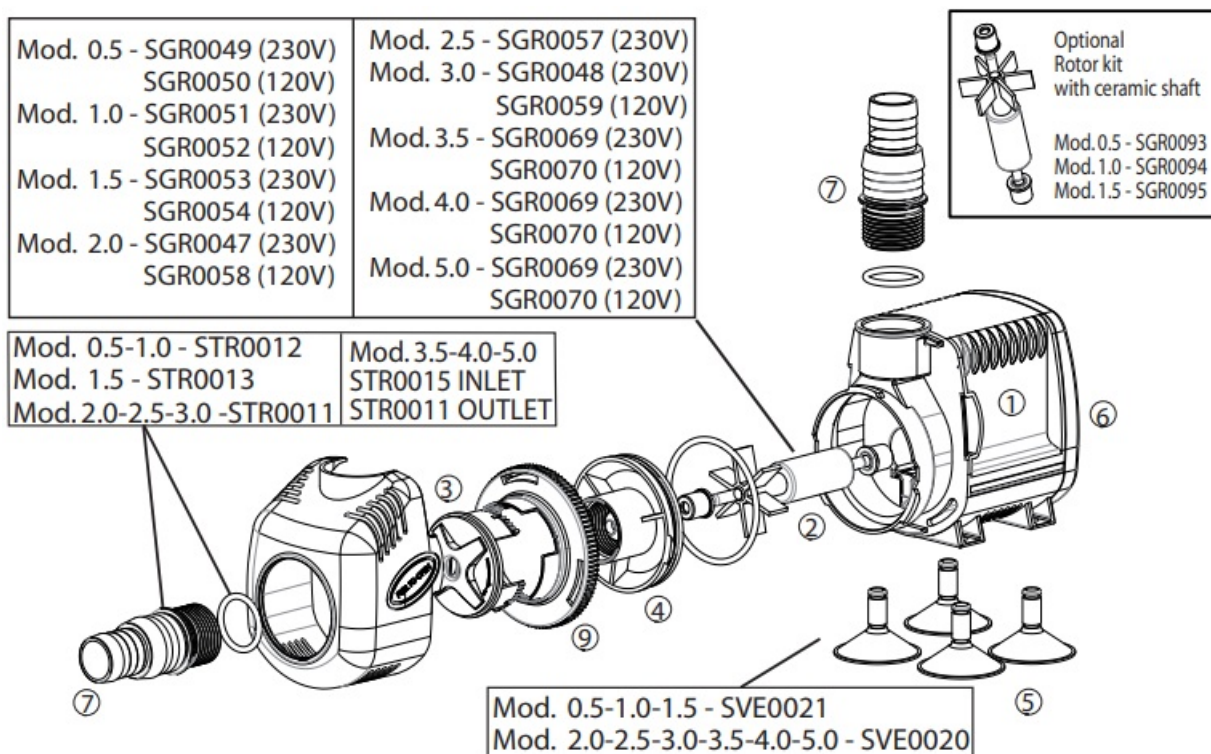
**SICCE Syncra pump**



**IMPORTANT** – The wires in this lead are coloured as follows:

- Blue-Neutral/Brown-Live. The colours of the wires of the main lead of this appliance may not correspond with the coloured markings identifying the terminals in your plug. In this case, connect as follows:
  - the BROWN wire must be connected to the terminal marked with L or in RED colour; the BLUE wire must be connected to the terminal marked N or in BLACK colour.
  - CAUTION – The BROWN or BLUE leads must NEVER be connected to the earth terminal (marked E or in GREEN/YELLOW colour) of a 3 pins plug.

## SPARE PARTS



## TECHNICAL DATA

Syncra Silent	0.5	1.0	1.5	2.0	2.5	3.0	3.5	4.0	5.0
230V – 50 Hz									
Max flow rate	700 l/h	950 l/h	1.350 l/h	2.150 l/h	2.400 l/h	2.700 l/h	2.500 l/h	3.500 l/h	5.000 l/h
Watt	8 W	16 W	23 W	32 W	40 W	45 W	65 W	80 W	105 W
Ampere	0,06 A	0,14 A	0,17 A	0,30 A	0,30 A	0,21 A	0,34 A	0,40 A	0,60 A
Head max	1,2 m	1,5 m	1,8 m	2,0 m	2,4 m	3,0 m	3,7 m	3,7 m	3,8 m
Cord length	1,5 m – INDOOR			2,2 m – INDOOR					
	10 m – OUTDOOR								

120V – 60 Hz									
Max flow rate	185 US gal	251 US gal	357 US gal	568 US gal	–	714 US gal	687 US gal	951 US gal	1321 US gal
Watt	8 W	16 W	23 W	35 W	–	48 W	68 W	85 W	105 W
Ampere	0.12 A	0.25 A	0.43 A	0.65 A	–	0.43 A	0.70 A	0.85 A	0.95 A
Head max	4 ft	5 ft	6 ft	6.5 ft	–	9.9 ft	12.5 ft	12.5 ft	12.6 ft
Cord length	6 ft – INDOOR				7.2 ft – INDOOR				
	20 ft – OUTDOOR								

## IMPORTANT SAFETY INSTRUCTIONS

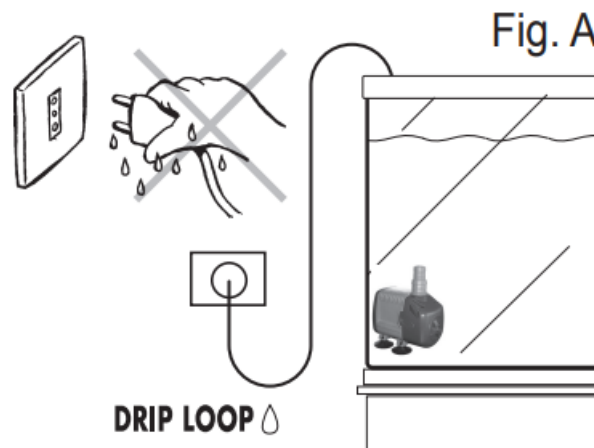
**WARNING** – To guard against injury, basic safety precautions should be observed, including the following:

### READ AND FOLLOW ALL SAFETY INSTRUCTIONS

**DANGER:** To avoid possible electric shock, special care should be taken since water is employed in the use of aquarium equipment. For each of the following situations, do not attempt repairs by yourself, return the appliance to an authorized service facility for service or discard the a appliance.

1. CAUTION: If electrical components of the appliance get wet, unplug the appliance immediately.
2. If the appliance shows any sign of abnormal water leakage, immediately unplug it from the power source.
3. Carefully examine the appliance after installation. It should not be plugged in if there is water on parts not intended to be wet.
4. Do not operate any appliance if it has a damaged cord or plug, or if it is malfunctioning or has been dropped or damaged in any manner.
5. To avoid the possibility of the appliance plug or receptacle getting wet, position aquarium stand and tank or the fountain to one side of a wall-mounted receptacle to prevent water from dripping onto the receptacle or plug. A “drip-loop” shown in fig. A should be arranged by the user for each cord connecting an aquarium appliance to a

receptacle. The “drip-loop” is the part of the cord below the level of the receptacle or the connector if an extension cord is used, to prevent water traveling along the cord and coming in contact with the receptacle. If the plug or receptacle does get wet, DON'T unplug the cord. Disconnect the fuse or circuit breaker that supplies power to appliance. Then unplug and examine for presence of water in the receptacle. Fig. A



6. Close supervision is necessary when any appliance is used by or near children.
7. To avoid injury, do not contact moving parts or hot parts such as heaters, reflectors, lamp bulbs and the like.
8. Always unplug an appliance from an outlet when not in use, before putting on or taking off parts and before cleaning. Never yank cord to pull plug from outlet. Grasp the plug and pull to disconnect.
9. Do not use an appliance for other than intended use. The use of attachments not recommended or sold by the appliance manufacturer may cause an unsafe condition.
10. Do not install or store the appliances where it will be exposed to the weather or to temperatures below freezing.
11. Make sure an appliance mounted on a tank is securely installed before operating it.
12. Read and observe all the important notices of the appliance.
13. If an extension cord is necessary, a cord with a proper rating should be used. A cord rated for less amperes or watts than the appliance rating may overheat. Care should be taken to arrange the cord so that it will not be tripped over or pulled.
14. This appliance has a polarized plug (one blade is wider than other). As a safety feature, this plug will fit in a polarized outlet only one way. If the plug does not fit fully in the outlet, reverse the plug. If it still does not fit, contact a qualified electrician. Never use with an extension cord unless plug can be fully inserted. Do not attempt to defeat this safety feature.

**CAUTION:** Pump is to be connected to a circuit that is protected by a Ground Fault Circuit Interrupter.

**WARNING:** To reduce the risk of electric shock, use only on portable self-contained fountains no larger than 5 feet in any dimension.

### **SAVE THESE INSTRUCTIONS**

Dear valued Customer thank you for choosing , SYNCRA SILENT, a pump ideal to be used for marine and fresh water aquariums, decorative fountains, protein skimmers and water cooling systems. With its modern design, small dimensions, powerful and silence performances ,SYNCRA Line offers the best choice in the pumps market. SYNCRA pumps can be used fully submersed or in inline applications and come with two stepped hoses included. It is easy to use and to maintain thanks to the complete absence of screws. Please, read carefully and save the following instructions to use in the best way your SYNCRA pump.

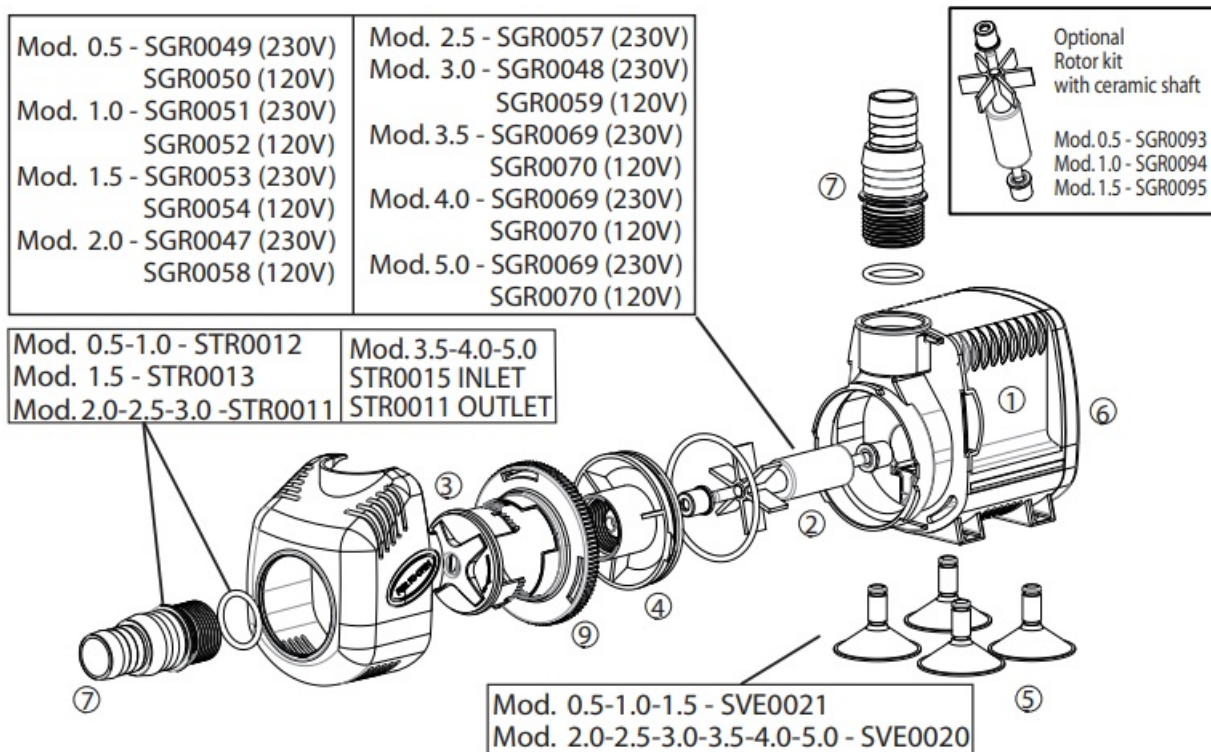
## **SAFETY INSTRUCTIONS:**

SYNCR A is in conformity with the national and international security laws.

1. Always isolate the pump from the mains electricity before installing or carrying out any maintenance. Power to the pump must be supplied through a Residual Current Device (RCD) with a rated residual operating current not exceeding 30mA.
2. The pump can work "Wet & Dry", in or out of water.
3. Before connecting the pump to the electricity supply, check there are any damages on cord or plug.
4. The pump has a type Z cable link. The cable and the plug cannot be substituted or repaired; in case of damage of them replace the entire pump.
5. ATTENTION: do not operate any appliance if it has a damaged cord or plug, if it is malfunctioning, or if it has been dropped or damaged in any way.
6. The pump must not work without water to avoid damages to the motor.
7. The pump can be used in liquids or in environment with a temperature not higher than 35° C / 95° F.
8. Do not use the pump for uses different to those for which it has been projected as, i.e. in bathroom or similar applications.
9. Avoid to use the pump with corrosive and abrasive liquids.
10. The pump cannot be used by people with handicaps or by children if they are not supervised by a person responsible for their safety.
11. To avoid that accidental drips wet the plug or the socket, make a loop with the cord under the socket level (Fig. A).
12. Avoid to take the pump by the cord during the installation or maintenance.
13. The pump can be used only in the above mentioned applications and it is only for internal use.
14. If the pump or the filter is supplied with a cable 10 metres long, or a cable more than 6 feet long for the American type (USA), these appliances are intended for outdoor use as required by international standards.fig A

## **USE AND MAINTENANCE INSTRUCTIONS**

The multi functional pumps SYNCRA are made by the following components (Fig. 2):



1. Motor body completely submersible and insulated by epoxy resin
2. Impeller assembly wear-resistant and noise-proof (ceramic shaft from mod. 2.0/2.5/3.0/3.5/4.0/5.0)
3. Water flow regulator from min. (-) to max. (+) assembled to the pre-chamber
4. Threaded pre-chamber ( $\frac{1}{2}$ " Gas mod.0.5/1.5/2.0;  $\frac{3}{4}$ " Gas mod. 2.0/2.5/3.0; 1" Gas mod. 3.5/4.0/5.0)
5. Suction cups
6. Pump back cover
7. Threaded adaptors
8. Pre-filter
9. Intake grill

## PUMP INSTALLATION: USE AND REGULATION

Proceed as follow to install the pump:

Insert the suction cups in the holes under the pump body (5+1); clean the basin, fountain or aquarium wall and pressing the pump on the suction cups to fix it. Turn the water flow regulator on the front side of the pump to change the flow (3). SYNCRA is provided with 2 threaded adaptor (7) to which can be attached either flexible or rigid tubes suitable to adapt the pump for many uses. In case of "dry" use (out of water), take away the intake grill (9). Position the flow regulator according to the graining and detach it (3) pushing it softly out of its place. Screw the 2 adaptors in the inlet and outlet holes and connect the tubes. Insert the plug in the socket.

## MAINTENANCE

For the periodic maintenance of the pump, first of all unplug the plug from the electric socket and then take the pump. Proceed in the following way: take away the pre-filter (8), the ring nut (9) and then the threaded pre-chamber (4); take away the rotor (2) and rinse it under fresh water. Always check the condition of the o-rings. Any damage to the o-rings, even small, can seriously endanger the pump performances. In this case it is recommended to substitute them. Rinse each part with water, using a soft brush to remove the deposit. Then assemble everything in the inverse order.

## ONLINE HELP

Watch our tutorial videos on THE SICCE YOU TUBE official channel [www.youtube.com/SICCEspa](http://www.youtube.com/SICCEspa).

## INSTRUCTIONS FOR THE CORRECT DISCHARGE OF THE PRODUCT ACCORDING TO EU DIRECTIVE 2002/96/EC

When used or broken, the product does not have to be discharged with the other waste. It can be delivered to the specific electric waste collection centers or to dealers who give this service. Discharge separately an electric tool avoid negative consequences for the environment and for the Health and allows to regenerate the materials so to have a great saving of energy and resources.

## WARRANTY

This product is guaranteed against defects of materials and workmanship for a period of 3 years from the date of purchase, except the rotor 2. The warranty certificate must be filled in by the dealer and must accompany the pump if it is returned for repair, along with the cash register receipt or similar document. The warranty covers the replacement of the defective parts. In case of improper use, tampering or negligence by the buyer or user, the guarantee is void and expires immediately. The guarantee is also void in absence of the cash register receipt or similar document. The shipping cost to and from the factory, or the repair station, have to be paid by the buyer.


## FIND OUT HOW TO GET YOUR PRODUCT GUARANTEED FOR 5 YEARS

To improve our service and our clients' satisfaction, SICCE offers the possibility of adding a 2 years extension to the warranty by simply registering your product on our website [www.sicce.com](http://www.sicce.com) in "Sicce for you/Product registration". Fill-in the form and upload the product's purchase receipt. After having correctly inserted all your data, complete the warranty extension request.




## ATTENTION!

The limestone deposits and the natural wear-out of the components might cause a raise of the pump's noise. However, they do not affect the good functioning of the pump. In this case, we recommend you to replace the impeller.

## Documents / Resources

	<a href="#">SICCE Syncra pump</a> [pdf] User Manual Syncra pump
---	--

## References

-  [Sicce Corporate](#)
-  [Register a .US.COM domain today!](#)
-  [Sicce Corporate](#)
-  [Sicce Corporate](#)
-  [Sicce Corporate](#)