



Contents [[hide](#)]

- [1 SICCE Space Eko External Filter](#)
- [2 IMPORTANT SAFETY INSTRUCTIONS](#)
- [3 GROUNDING INSTRUCTIONS](#)
- [4 SPARE PARTS](#)
- [5 ASSEMBLY](#)
- [6 PRIMING THE FILTER](#)
- [7 MAINTENANCE](#)
- [8 PUMP CLEANING](#)
- [9 WARRANTY](#)
- [10 Documents / Resources](#)
 - [10.1 References](#)



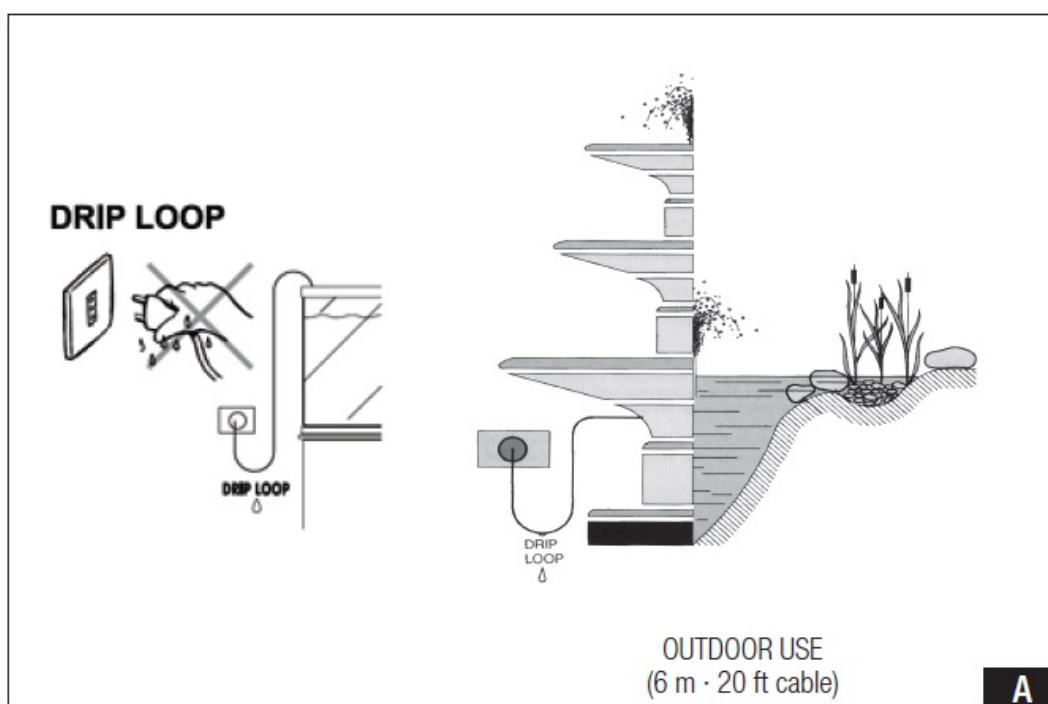
SICCE Space Eko External Filter



Space EKO

Space EKO			100	200	300
Max flow rate	220 – 240 V · 50 Hz	l/h	550	700	900
	110 – 120 V · 60 Hz	US gph	145	190	240
Head max	220 – 240 V · 50 Hz	m	0,8	1,0	1,5
	110 – 120 V · 60 Hz	ft	2.6	3.3	5.0
Watt	220 – 240 V · 50 Hz	W	5	6	14
	110 – 120 V · 60 Hz		5	6	14
Canister volume		L	4,0	5,4	5,4
		US gal	1.0	1.4	1.4
Filtration volume		L	2,0	3,0	3,0
		US gal	0.5	0.8	0.8
Tank capacity		L	< 100	< 200	< 300
		US gal	< 30	< 50	< 80
Baskets		pcs.	2	3	3
		m	2,0	3,0	3,0
Tubes		(Ø mm)	(Ø 12 – 16)	(Ø 16 – 22)	(Ø 16 – 22)

		ft	6.5	9.8	9.8
		(Ø inch)	(Ø ½")	(Ø ½")	(Ø ½")
Cord length		m	1,5		
		ft	6.0		



IMPORTANT SAFETY INSTRUCTIONS

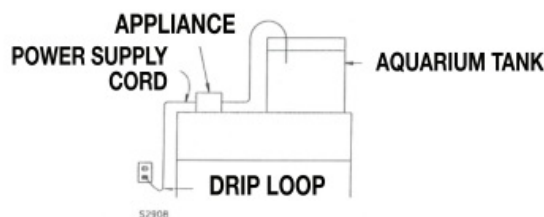
WARNING – To guard against injury, basic safety precautions should be observed, including the following:

- READ AND FOLLOW ALL SAFETY INSTRUCTIONS
 - DANGER: To avoid possible electric shock, special care should be taken since water is employed in the use of aquarium equipment. For each of the following situations, do not attempt repairs by yourself; return the appliance to an authorized service facility for service or discard the appliance:
1. If the appliance falls into the water, DON'T reach for it! First unplug it and then retrieve it. If electrical components of the appliance get wet, unplug the appliance immediately.

(Non-immersible equipment only)

2. If the appliance shows any sign of abnormal water leakage, immediately unplug it from the power source. (Immersible equipment only)
3. Carefully examine the appliance after installation. It should not be plugged in if there is water on parts not intended to be wet.
4. Do not operate any appliance if it has a damaged cord or plug, or if it is malfunctioning or has been dropped or damaged in any manner.
5. To avoid the possibility of the appliance plug or receptacle getting wet, position aquarium stand and tank or the fountain to one side of a wall-mounted receptacle to prevent water from dripping onto the receptacle or plug. A “drip-loop” shown in the figure below should be arranged by the user for each cord connecting an aquarium appliance to a receptacle. The “drip-loop” is the part of the cord below the level of the receptacle or the connector if an extension cord is used, to prevent water traveling along the cord and coming in contact with the receptacle.

If the plug or receptacle does get wet, DON'T unplug the cord. Disconnect the fuse or circuit breaker that supplies power to appliance. Then unplug and examine for presence of water in the receptacle.



- Close supervision is necessary when any appliance is used by or near children.
- To avoid injury, do not contact moving parts or hot parts such as heaters, reflectors, lamp bulbs and the like.
- Always unplug an appliance from an outlet when not in use, before putting on or taking off parts and before cleaning. Never yank cord to pull plug from outlet. Grasp the plug and pull to disconnect.
- Do not use an appliance for other than intended use. The use of attachments not recommended or sold by the appliance manufacturer may cause an unsafe condition.
- Do not install or store the appliances where it will be exposed to the weather or to temperatures below freezing.
- Make sure an appliance mounted on a tank is securely installed before operating it.

- Read and observe all the important notices of the appliance.
- If an extension cord is necessary, a cord with a proper rating should be used. A cord rated for less amperes or watts than the appliance rating may overheat. Care should be taken to arrange the cord so that it will not be tripped over or pulled.

SAVE THESE INSTRUCTIONS

SOC are made in conformity with the national and international security laws.

READ AND FOLLOW ALL SAFETY INSTRUCTIONS

1. Check that the current on the pump's label matches the outlet current. The pump has a differential switch (protector) through which the nominal current must be lower or equal to 30 mA.
2. Never operate the pump without water to avoid damage to the pump motor.
3. Before plugging in the pump, check that the cord and pump are not damaged.
4. The pump has a type Z cable link. The cable and plug cannot be substituted or repaired. In case of damage, replace the entire pump
5. CAUTION: disconnect all submerged electrical products before doing maintenance in the water; in case the plug or electrical outlet is damaged, switch off the circuit breaker before disconnecting the plug from the outlet.
6. The pump can be run in liquids or in any environment with a maximum temperature of 35°C/95° F.
7. Do not use the pump for purposes (i.e. in bathroom or similar applications) other than for which it was designed for.
8. Avoid pump use with corrosive or abrasive liquids.
9. The pump has not been designed for use by children or mentally challenged individuals. Appropriate adult supervision or persons responsible for personal safety is required.
10. Do not disconnect the pump from an electrical outlet by pulling the cord.
11. The pump can only be used in the above-mentioned applications and is only for indoor use.
12. This appliance has no user serviceable parts.

INSTRUCTIONS FOR THE CORRECT DISPOSAL OF THE PRODUCT ACCORDING

TO EU DIRECTIVE 2002/96/EC

When used or broken, this product does not have to be disposed with other waste. It can be delivered to specific electrical waste collection centers or to dealers who provide this service. Disposal of electrical products separately avoids negative consequences for the environment and for overall public health and allows the reuse of materials providing savings of energy and resources.

GROUNDING INSTRUCTIONS

This appliance should be grounded to minimize the possibility of electric shock. This appliance is equipped with an electric cord having an equipment grounding conductor and a grounding type plug. The plug must be plugged into an outlet that is installed and grounded in accordance with all appropriate codes and ordinances.

This appliance is for use on a nominal 120-volt circuit, and has a grounding plug that looks like the plug illustrated in (N) below. A temporary adapter which looks like the adapter illustrated in (8) and (C) below may be used to connect this plug to a two-pole receptacle as shown in (8) if a grounded outlet is not available. The temporary adapter should be used only until a grounded outlet can be installed by a qualified electrician. The green-colored rigid ear lug, and the like) extending from the adapter must be fastened to a permanent ground such as a grounded outlet box.

Congratulations on choosing SPACE EKO External Filter. All filters in the SPACE EKO range are specifically designed to offer highly efficient filtration of your aquarium water. Each model features an innovative self-priming mechanism for easy start up and simplified maintenance. SPACE EKO Filters are guaranteed to give you quiet operation and low consumption. This high quality product, Made in Italy, is designed to give you many years of trouble-free service.

HOW DO I CHOOSE THE RIGHT FILTER FOR MY AQUARIUM?

SPACE EKO are available in three sizes, for aquariums up to 300 L (100 US gal), and are suitable for every type of aquarium and turtle tanks. Flow rates range from 550 – 900 l/h (145 – 240 US gph). Flow can be adjusted to ensure proper water circulation inside the aquarium, essential for maintaining good oxygenation. Oxygen is vital for fish and for the beneficial bacteria that carry out biological filtration. All SPACE EKO Filters

are supplied with high quality filter media and all the other accessories required, to ensure that setting up your new filter is quick and easy.

SAFETY INSTRUCTIONS

Please read all safety instructions carefully before using the SPACE EKO.

For indoor use only. Intended for aquariums.

All electrical equipment in water must be disconnected during routine care and maintenance work.

1. **DANGER!** To avoid electrical shock, in any of the following situations, do not try to personally make repairs. Return the unit to an authorized repair center: Check that the tension on the filter's label is correspondent to the network tension. The filter has to be supplied by a differential switch (protector), through which the nominal current is lower or equal to 30 mA. The filter must not work without water to avoid damages to the motor.
 - If SPACE EKO falls in water do not try retrieve it with your hands! First pull out the wall plug and then recover the filter.
 - If SPACE EKO develops a water leak, pull out the wall plug before checking for the cause of the leak.
 - After installation carefully inspect the filter. It should not be plugged in if water is present on the plug.
 - Do not use SPACE EKO if plug or cable are damaged, in case of malfunction or if the filter has been dropped or damaged in any way. A "drip loop" should be used (Pic. A) for each cable making the connection between the aquarium to a socket. The "drip loop" loops below the level of the plug or of the connector when an extension cord is used. Any water running along the cable drips from the bottom of the loop before it comes in contact with the electricity. If the plug or socket become wet, do not unplug the cable. Instead, remove the fuse or switch off the breaker for that circuit. Then unplug the filter and carefully inspect the electrical socket.
2. We suggests supervising children closely when using any type of appliance.

This equipment is not intended for use by persons (including children) with limited physical, sensory or mental abilities or for persons with no experience or knowledge, unless they are supervised by a person responsible for their safety, or unless they

have received, from that person, instructions on how to use the equipment.

3. The electrical plug must be detached before performing any maintenance or cleaning operations.
4. SPACE EKO must be used only for filtering as indicated in this instruction manual.
5. Do not install or place the filtering areas exposed to fumes, smoke or vapor, or in freezing temperatures. The filter can be used in liquids or in environment with a temperature not higher than 35° C / 95° F.
6. Read and follow all notices printed on the equipment or found in the instruction manual.
7. We recommend using electric extension cords with technical characteristics that avoid dangerous cable over-heating.
8. We suggest placing the cable so that it will not be stepped on or damaged.
9. SAVE THESE INSTRUCTIONS AND KEEP WITH SPACE EKO.

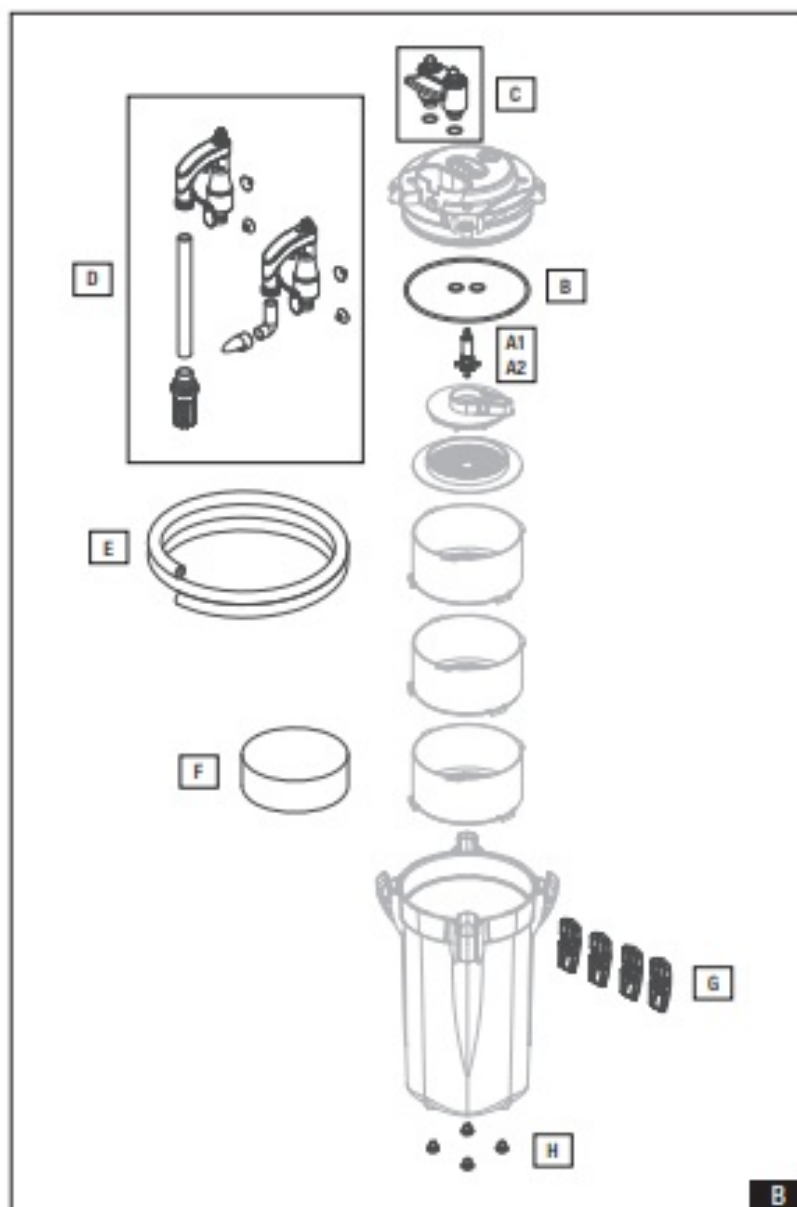
This product is qualified in accordance with the respective national regulations and guidelines and meets EC standards.

SPARE PARTS

Rotor+ stainless steel shaft+ rubbers	A1	220 – 240 V · 50 Hz	SGR0143	SGR0145	SGR0189
	A2	110 – 120 V · 60 Hz	SGR0144	SGR0146	SGR0145
O-ring	B		SVE0043(4 pcs.)		
Disconnect system	C		SKT0068	SKT0067	
Self priming kit	D		SKT0133	SKT0134	
Flex tube transparent	E		STR0022 (2 m)	STR0023 (3 m)	
Filter foams	F		SSP0023(3 pcs.)		
Opening closing hooks	G		SPL0085(2 pcs.)		

Silicon feet	H		SVE0039(4 pcs.)
Filter Media AQUAMA T	I		SSP0024

SPARE PARTS (Pic. B):



- A – Rotor + stainless steel shaft + rubbers
- B – O-ring
- C – Disconnect system
- D – Self priming kit
- E – Flex tube transparent
- F – Filter foams

- G – Opening closing hooks
- H – Silicon feet
- I – Filter Media AQUAMAT

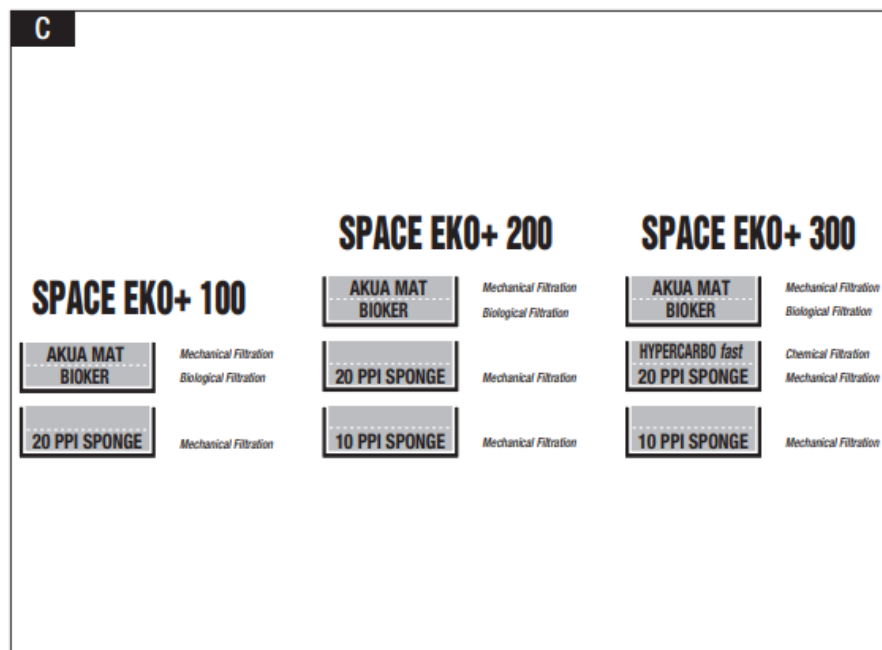
ASSEMBLY

- SPACE EKO are multi-purpose filters that can be used with any type of filter media in separate baskets. Each basket can be removed easily for maintenance.
- Before opening the filter, always remove the hosetail fitting from the lid. To do this, fully pull out the plastic lever which is on the top of the filter and the hosetail fitting will be released (Pic. 1/2).

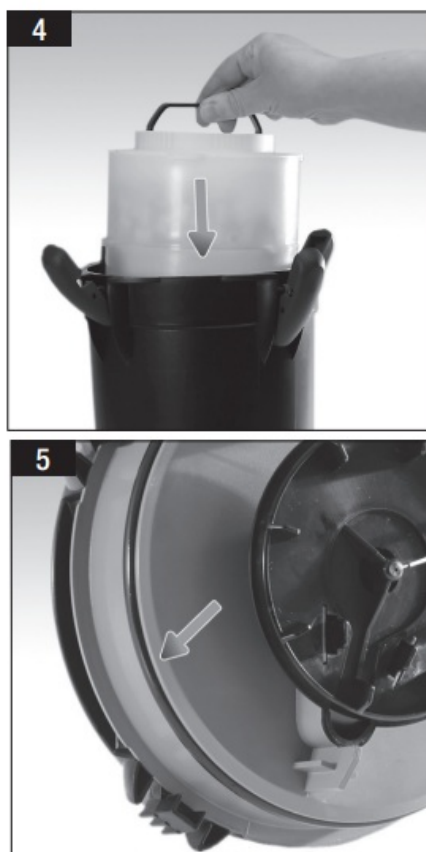


- Rinse the sponges well in running water before putting them in the corresponding basket.

- Place the filter media and sponges in the baskets as shown in (Pic. C).



- Place baskets back into the filter (Pic. 4). Make sure the sealing ring is placed correctly (Pic.5), then replace the lid. Close the four clamps (Pic. 6) and re-attach the hosetail fitting.

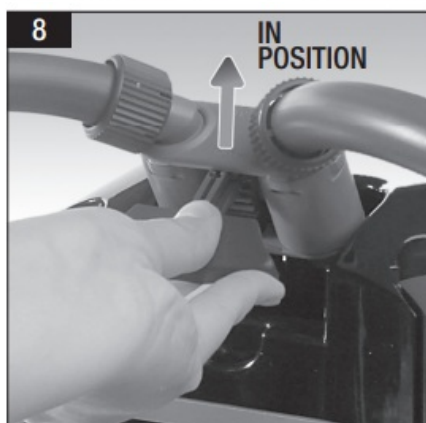
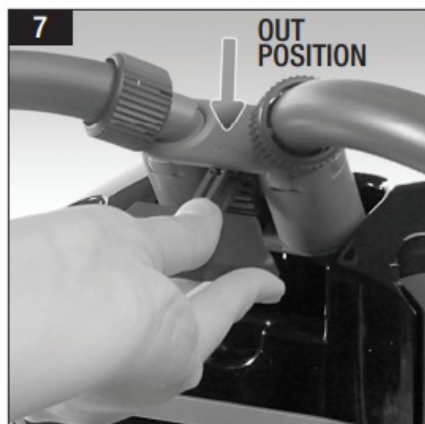
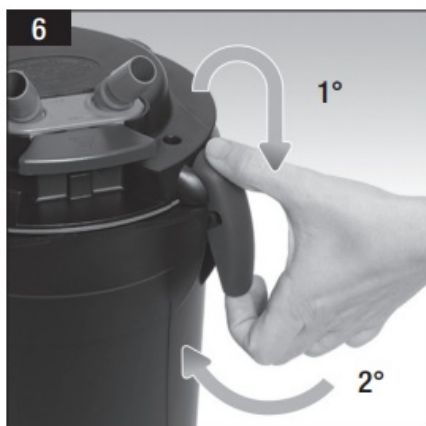


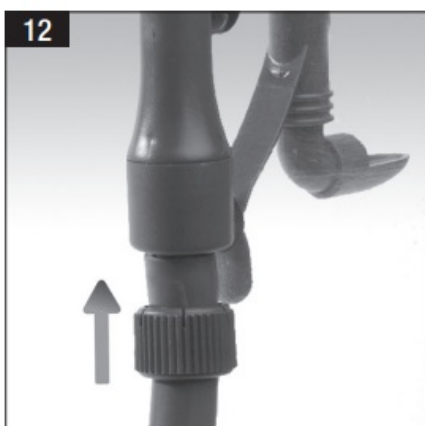
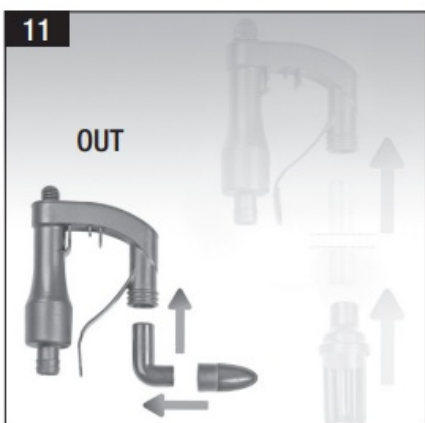
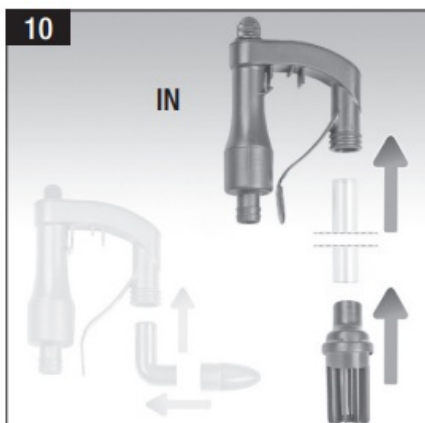
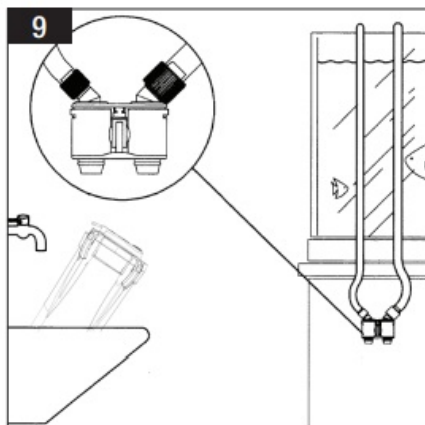
- Your SPACE EKO is now ready for installation on your aquarium.

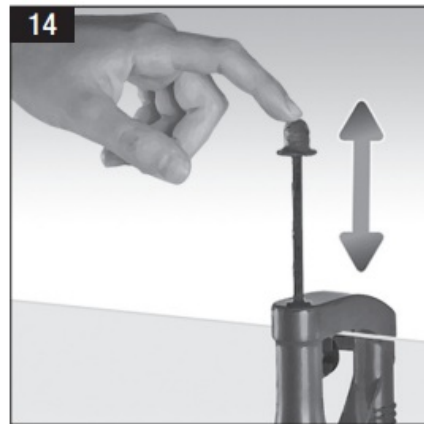
INSTALLATION

Place the filter in your desired location before connecting the flexible tubing.

- The distance between the water level of the tank and the lowest part of the filter body must not exceed 1,5 m.
- The flexible tubing must follow a linear course from the filter to the edge of the aquarium, avoiding kinks or loops.
- The water level must never drop more than 17,5 cm / 6.88 ft below the top of the aquarium.
- Never install the filter above the water level.
- To avoid a drop in filter efficiency, do not place the suction tube near aerators.
- Connect the corresponding flexible tube to the hosetail fitting. When done, push the security locks down to the final position so that the clamps are firmly in place (Pic. 6). With the lever in the “OUT” position, push down until the hosetail fitting is in place (Pic. 8). Complete the operation by switching the lever to the “IN” position (Pic. 10-14).

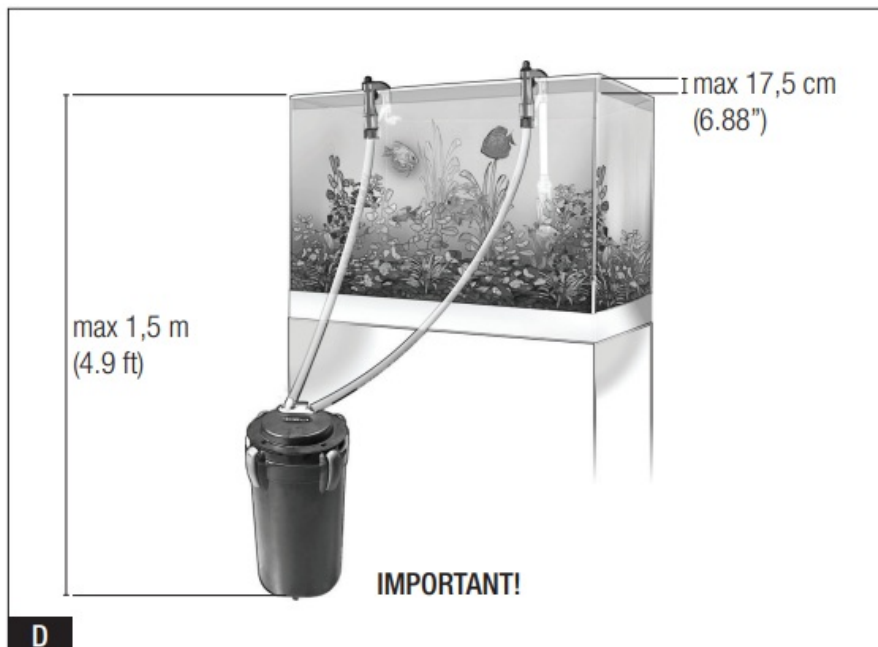






- The curved inlet tube should be assembled as per (Pic. 12) and must be connected to the flexible hose on the IN hosetail. The flexible tubing should be cut to length as required and connected to the unions, inserting the retention clips. Make sure the unions are fitted to the hosetails the correct way round: suction “IN” union (Pic. 10), outflow “OUT” union (Pic. 11).
- Install the suction cups to the water inlet/outlet tubes as required (Pic. 13).
- Position both the tube unions in the desired positions on the glass at the back of the aquarium.

Before turning the filter on, check that all in-take and out-put tubes have their extremities in water, as indicated in (Pic. D).



ATTENTION! Ensure that the flexible tubing is stretched out with no kinks and, if necessary, shorten it.

ATTENTION! The filter must only be operated in a vertical position.

PRIMING THE FILTER

- SPACE EKO are supplied with a simple but effective filter priming system as indicated in (Pic. 14).
- The priming operation is carried out with the filter disconnected from the mains power.
- While holding the filter inlet fitting (Pic. 10), pump the lever, which is on it (Pic. 14), up and down several times so that water is drawn into the unit through the rigid tube. The filter, whilst being filled with water, pushes air through the outlet tube. Continue pumping the lever until you can feel water being forced into the filter (there will be some resistance when the filter has been filled). Once the filter is full (when no more air comes out of the outlet tube), the SPACE EKO can be connected to the power supply.

MAINTENANCE

- The filter must be unplugged from the power supply before any maintenance is carried out.
- For correct maintenance, follow the procedure below:

- Pull the hosetail fitting off of the filter (Pic. 15). During maintenance, the SPACE EKO hosetail fitting allows you to disconnect the tubes (filled with water) from the filter whilst keeping them connected to the aquarium, allowing the filter to be easily cleaned (this system also avoids the need to repeat the start-up process after maintenance is carried out). Unhook the filter head (Pic. 16), remove the baskets containing the filter material to be cleaned or changed (Pic. 17). **WARNING:** We advise you NOT to remove the ceramic bio-rings (biological filtration) from the basket so not to damage the colonies of bacteria.



WARNING: If you are replacing the filter media (e.g. ceramic bio-rings), we suggest you replace only a small quantity of exhausted material, in order to promote a faster regeneration of the bacterial flora. Wash the filter basket (s) in clean water (ATTENTION: do not use any type of detergent, because this will pollute the aquarium water). A small brush can be used to remove any calcium deposits.

PUMP CLEANING

- To clean the pump, remove the pre-chamber by unscrewing it anti-clockwise, and remove the impeller (Pic. 18).



- Carefully clean the impeller housing cover, the pre-chamber gasket, the impeller and the impeller chamber using a soft brush and then rinse with water.
- Replace the impeller and check that it rotates freely on its shaft.
- Replace the filter cover after checking that the O-ring is positioned correctly (Pic. 5), close the 4 clamps, and then connect the hoesail fitting.
- When inserting the handle of the hoesail fitting the water flow fills the filter automatically.
- The SPACE EKO is now ready for use again: plug it in and make sure that it is working correctly.

INSTALLATION OF THE FILTER IN A TURTLE TANK

When selecting the filter for a turtle tank, choose the model that can manage twice the water volume in the tank, due to the high amount of waste produced by turtles.

WARNING: when initially installing the filter and after cleaning it, be sure to increase the water level in the tank or partially fill the filter canister to avoid the water level in the tank dropping too low during the priming operation. The minimum water level in the tank must be around 8 – 10 cm.

WARNING: position the intake grid in the area of the tank with maximum water depth so it is always submersed and it doesn't suck air. Both the inlet and outlet tubes can be

shortened according to the height of the tank.

ONLINE HELP

Watch our tutorial videos on THE SICCE YOU TUBE official channel

www.youtube.com/SICCEspa

INSTRUCTIONS FOR THE CORRECT DISCHARGE OF THE PRODUCT ACCORDING TO EU DIRECTIVE 2002/96/EC

When used or broken, the product does not have to be discharged with the other waste. It can be delivered to the specific electric waste collection centers or to dealers who give this service. Discharge separately an electric tool avoid negative consequences for the environment and for the Health and allows to regenerate the materials so to have a great saving of energy and resources.

WARRANTY

This product is guaranteed against defects of materials and workmanship for a period of 3 years from the date of purchase, except the rotor n1. The warranty certificate must be filled in by the dealer and must accompany the pump if it is returned for repair, along with the cash register receipt or similar document. The warranty covers the replacement of the defective parts. In case of improper use, tampering or negligence by the buyer or user, the guarantee is void and expires immediately. The guarantee is also void in absence of the cash register receipt or similar document. The shipping cost to and from the factory, or the repair station, have to be paid by the buyer.

ATTENTION!

The limestone deposits and the natural wear-out of the components might cause a raise of the pump's noise. However, they do not affect the good functioning of the filter. In this case, we recommend you to replace the impeller.

SICCE S.r.l.

Via V. Emanuele, 115 – 36050 Pozzoleone (VI) – Italy

- Tel. +39 0444 462826 – Fax +39 0444 462828 – P. IVA / VAT 02883090249
- info@sicce.com ·

- www.sicce.com


SICCE US Inc.

- infous@sicce.com · www.sicce-us.com

SICCE AUSTRALIA Pty Ltd

- info@sicce.com.au · www.sicce.com.au

Documents / Resources

	SICCE Space Eko External Filter [pdf] Instruction Manual 100, 200, 300, Space Eko External Filter, Space Eko, External Filter, Filter
---	--

References

- [User Manual](#)

📁 100, 200, 300, External Filter, Filter, SICCE, Space Eko, Space Eko External
SICCE Filter

Leave a comment

Your email address will not be published. Required fields are marked *

Comment *

Name

Email

Website

☐ Save my name, email, and website in this browser for the next time I comment.

Post Comment

Search:

e.g. whirlpool wrf535swhz

Search

[Manuals+](#) | [Upload](#) | [Deep Search](#) | [Privacy Policy](#) | [@manuals.plus](#) | [YouTube](#)

This website is an independent publication and is neither affiliated with nor endorsed by any of the trademark owners. The "Bluetooth®" word mark and logos are registered trademarks owned by Bluetooth SIG, Inc. The "Wi-Fi®" word mark and logos are registered trademarks owned by the Wi-Fi Alliance. Any use of these marks on this website does not imply any affiliation with or endorsement.