



SIAMP TOSCA Low Level Exposed Cistern Instruction Manual

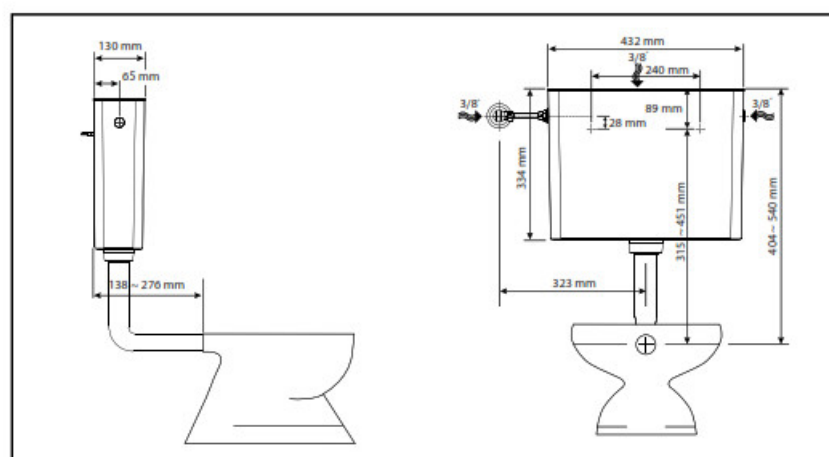
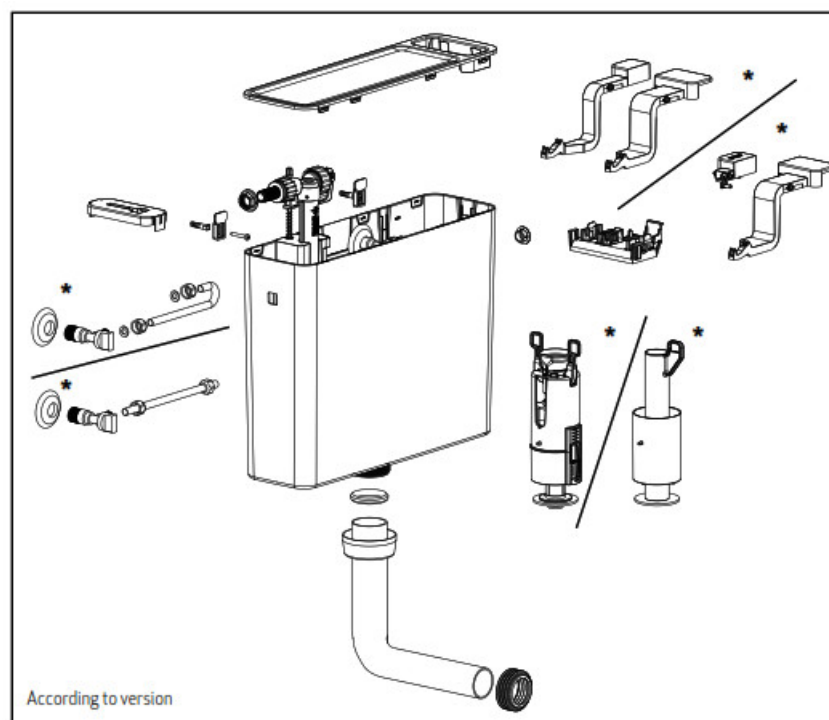
[Home](#) » [SIAMP](#) » SIAMP TOSCA Low Level Exposed Cistern Instruction Manual 



Contents

- [1 TOSCA Low Level Exposed Cistern](#)
- [2 Maintenance](#)
- [3 Documents / Resources](#)
 - [3.1 References](#)

TOSCA Low Level Exposed Cistern



Keep this manual for future interventions.

Read toilet and cover seat instructions before installing this tank. Find out about the characteristics of the water supply network.

Empty the water network before connecting the toilet tank.

The float valve, included, works with drinking water. The network operating pressure must be between 1 and 10 bar.

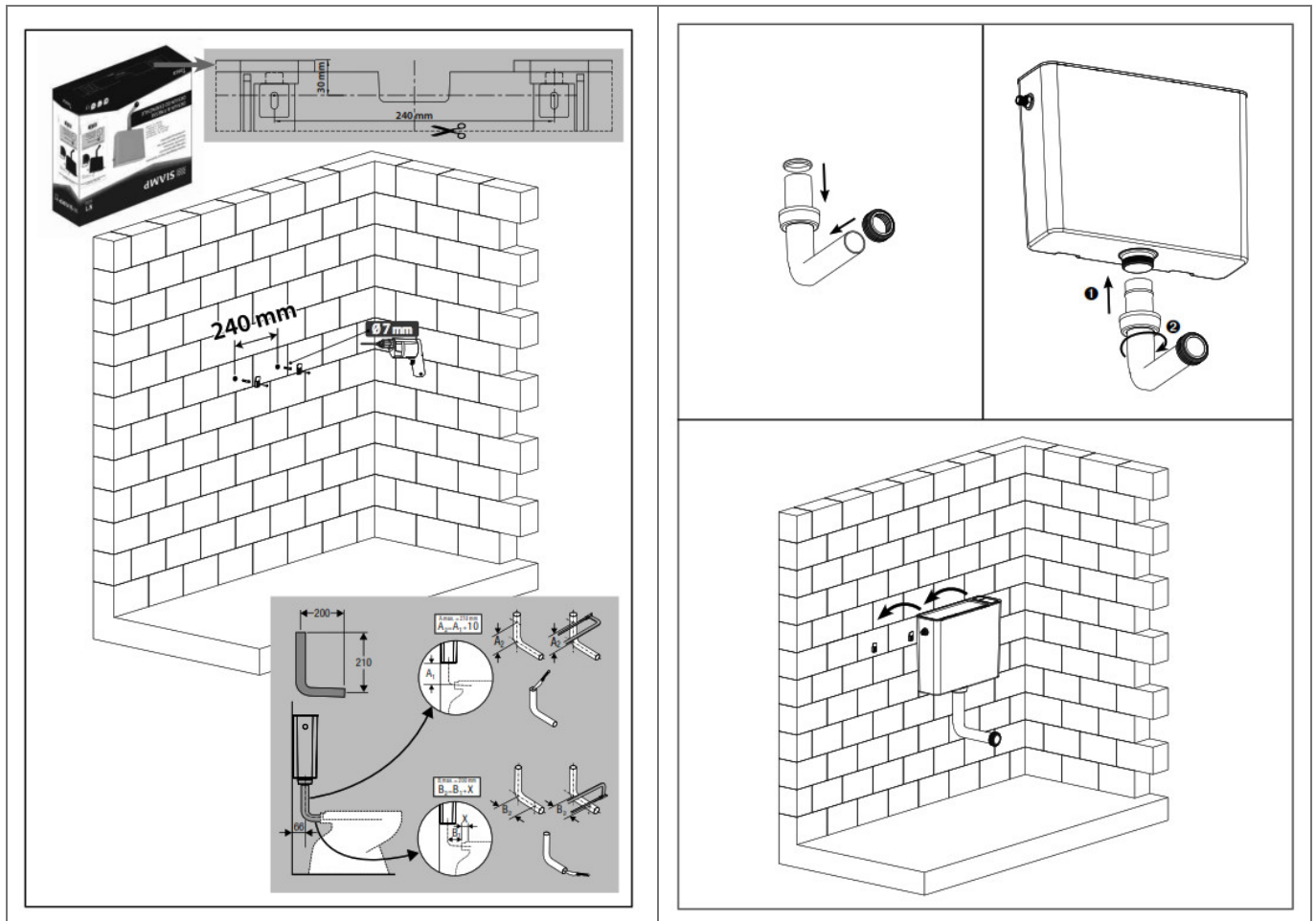
It is equipped with a filter to prevent foreign bodies from damaging it. This filter may require occasional cleaning.

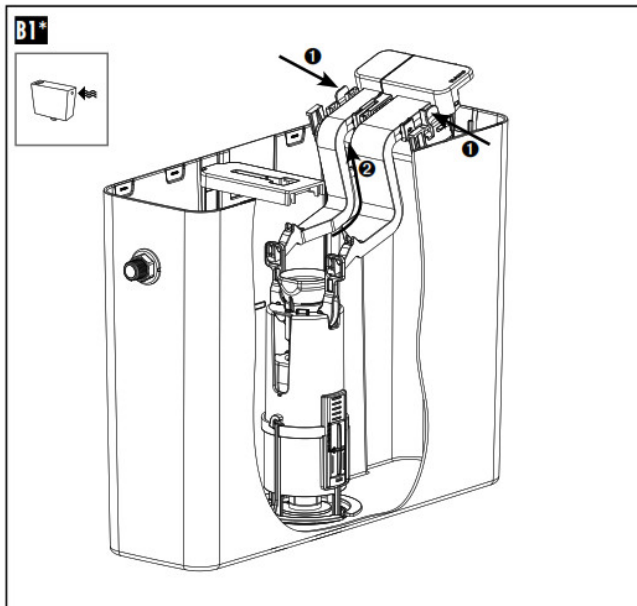
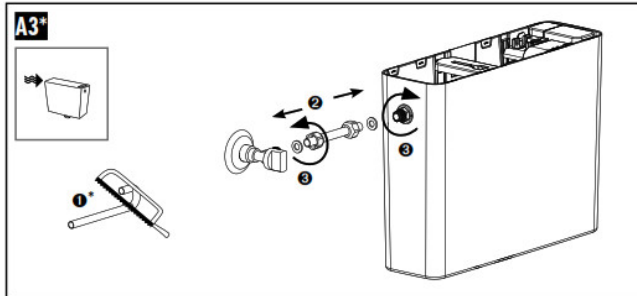
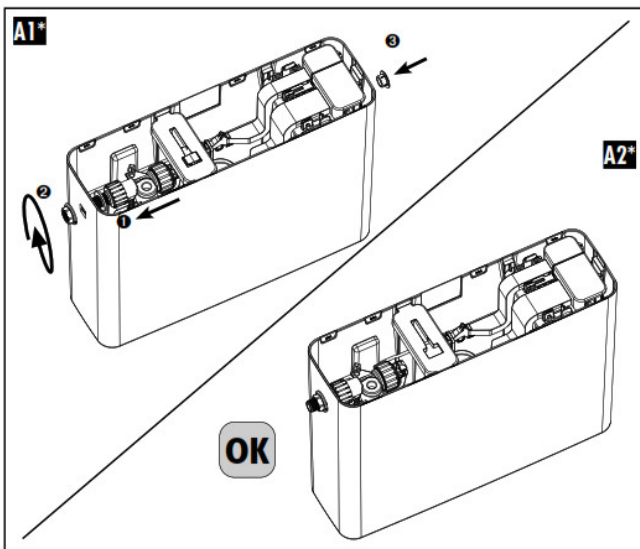
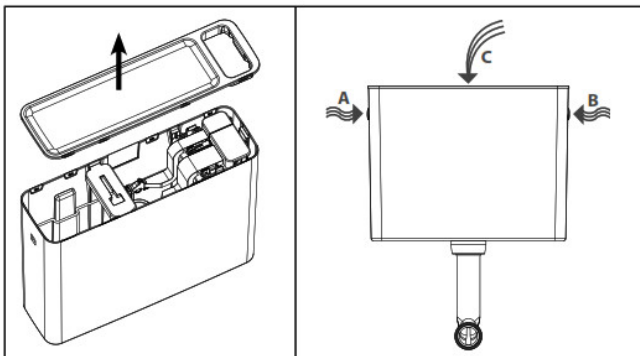
The shut-off valve should be operated occasionally to prevent blockage.

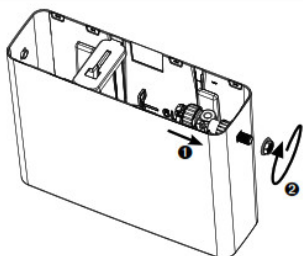
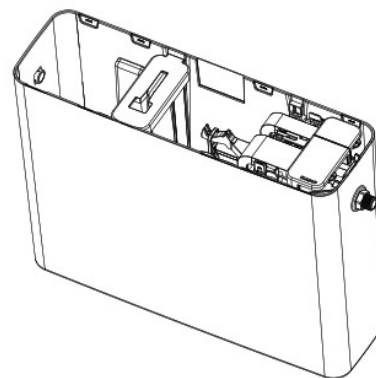
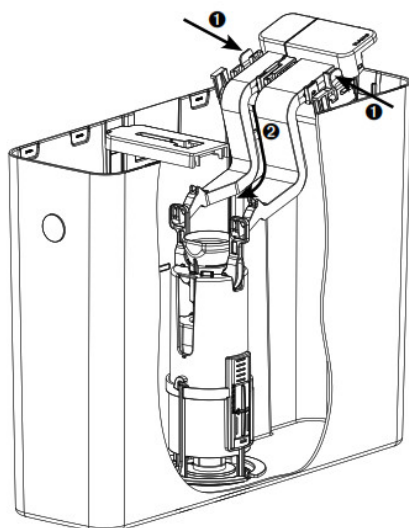
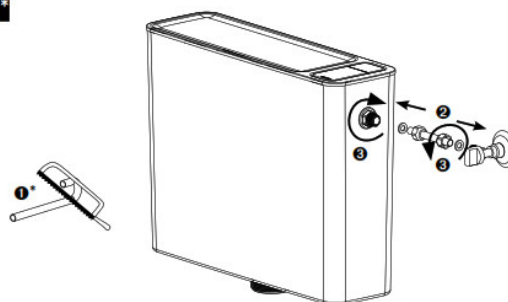
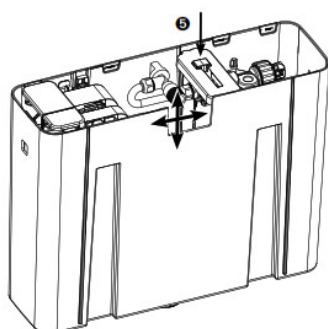
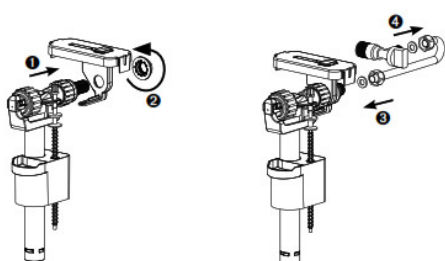
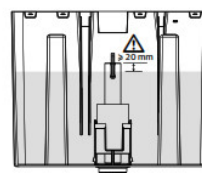
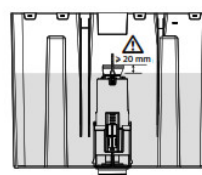
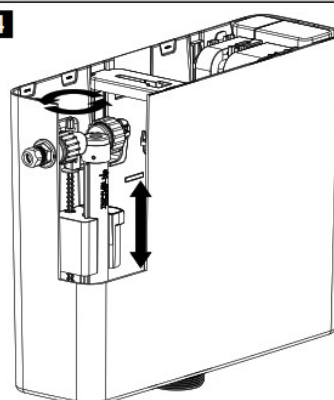
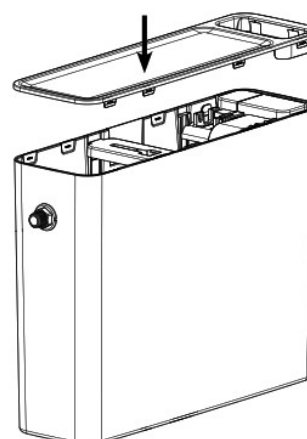
In the presence of water with a hardness $> 30^\circ\text{f}$, periodically treat the tank against limestone.

Tighten the nuts with moderate force.

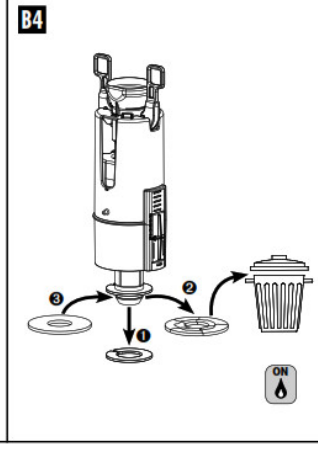
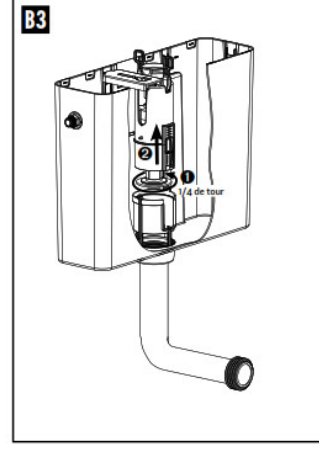
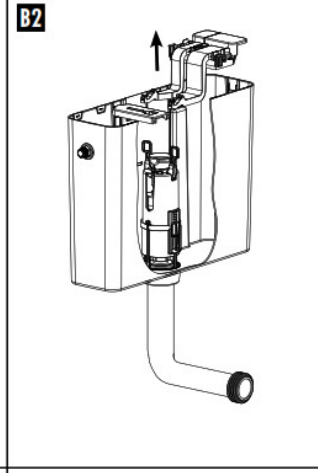
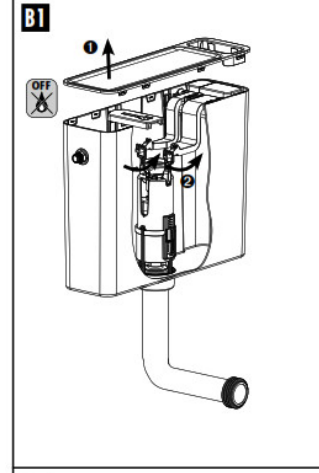
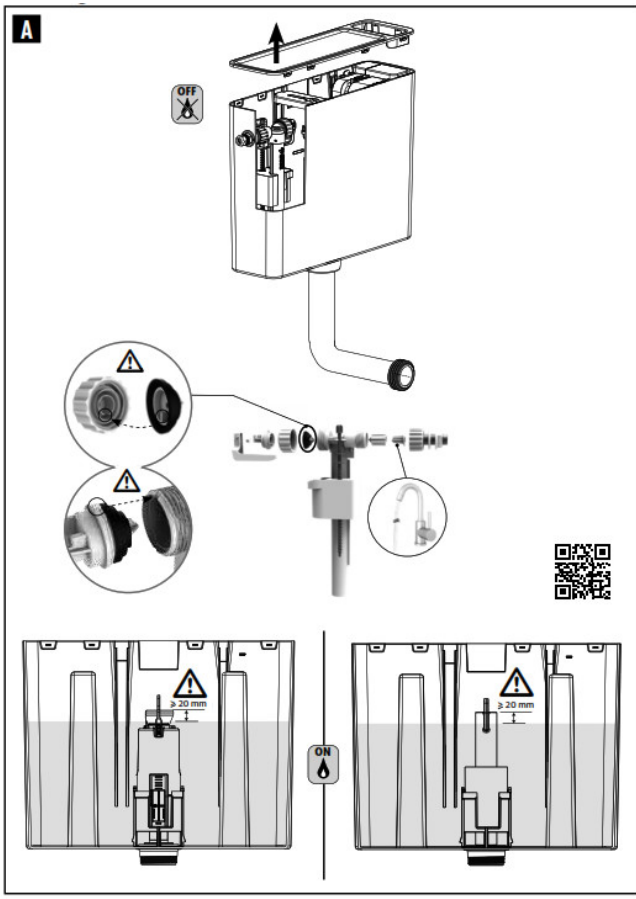
To seal, never use paste or sealant.

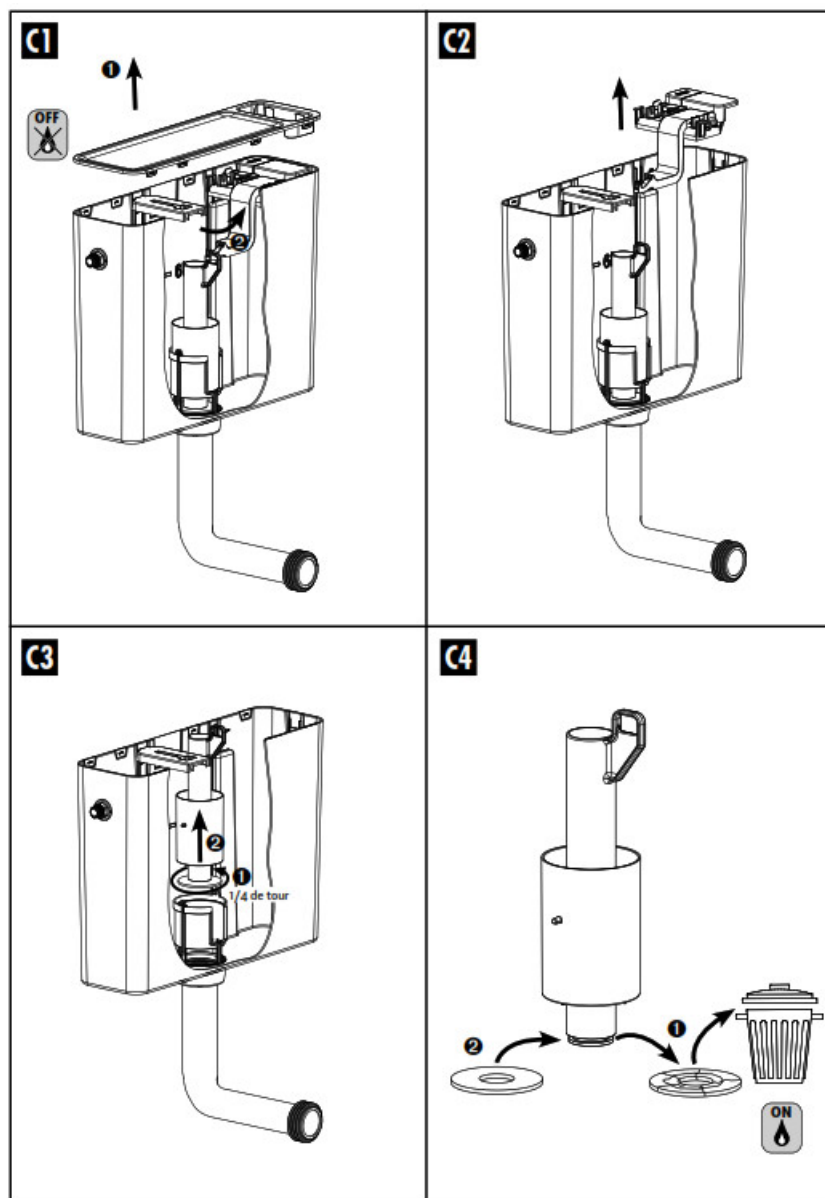




B2***OK****B3*****B4*****C*****4****5****"CLIC"**

Maintenance





Thank you!

You have just installed an exposed cistern by SIAMP and we would like to thank you for your confidence in our products.

As expert in technical equipment and accessories for the toilet, SIAMP has taken every possible measure to apply all the necessary care to the design and production of this product, offering a ten year guarantee except for rubber parts and manpower.

The company reserves the right to modify the product without notice while ensuring the permanence of its functions.




4, quai Antoine 1er – BP 219 – MC 98007 Monaco

Fax : +377 92 05 71 04 / contact@siamp.com

www.siamp.com

Réf. 10 0138 42

Documents / Resources

 <p>The image shows a white, rectangular, wall-mounted cistern with a curved outlet pipe at the bottom. Above the cistern, the text 'TOSCA' is visible, followed by several lines of small, illegible text. Below the cistern, the SIAMP logo is present.</p>	<p>SIAMP TOSCA Low Level Exposed Cistern [pdf] Instruction Manual</p> <p>TOSCA Low Level Exposed Cistern, TOSCA, Low Level Exposed Cistern, Level Exposed Cistern, Exposed Cistern, Cistern</p>
--	---

References

- [Home - Siamp](#)
- [User Manual](#)