



SHXCM600WIFI Infrared Mirror Heater with Wifi User Manual

[Home](#) » [SHX](#) » SHXCM600WIFI Infrared Mirror Heater with Wifi User Manual 

Contents

- 1 SHXCM600WIFI SHXCM600WIFI Infrared Mirror Heater with Wifi
- 2 Product Information
- 3 Product Usage Instructions
- 4 Intended Use
- 5 Symbol markings on the appliance
- 6 Recycling, disposal and Declaration of Conformity
- 7 Scope of delivery
- 8 Description of the appliance
- 9 SAFETY INFORMATION FOR INSTALLATION
- 10 Before assembly
- 11 Installation instructions
- 12 Starting up and functions
- 13 WI-FI and APP operation
 - 13.1 Connecting to Wi-Fi:
- 14 Cleaning and maintenance
- 15 Technical information
- 16 WARRANTY
- 17 Documents / Resources
 - 17.1 References
- 18 Related Posts





Product Information

Artikelnummer	SHXCM600WIFI
Hersteller	Schuss Home Electronic GmbH
Typenbezeichnung	–
Herstellungsland	–

Product Usage Instructions

- 1. Unpack the product and keep children away from packaging materials.
- 2. Do not use the heater if it has been dropped previously.
- 3. Avoid covering the device during operation and cooling phase.

Installation

Follow the installation instructions provided in the user manual.

Operation and Functions

To operate the infrared mirror heater, use the following controls:

- Hauptschalter (Main switch)
- Touch Display
- + Taste (+ Button)
- – Taste (- Button)
- Timer
- WIFI Anzeige (WIFI Indicator)

WLAN and APP Operation

To connect the infrared mirror heater to your WiFi network, follow these steps:

1. Download the Smartlife APP.
2. Connect the heater to your WiFi network using the APP.

Cleaning and Maintenance

Refer to the user manual for cleaning and maintenance instructions.

PLEASE READ THE OPERATING MANUAL CAREFULLY BEFORE BEGINNING ASSEMBLY,, INSTALLATION, OPERATION OR MAINTENANCE. PROTECT YOURSELF AND OTHERS BY FOLLOWING THE SAFETY INSTRUCTIONS. FAILURE TO COMPLY WITH THESE INSTRUCTIONS MAY RESULT IN PERSONAL INJURY AND/OR PROPERTY DAMAGE AND/OR LOSS OF CLAIMS UNDER WARRANTY.

Intended Use

This appliance is intended exclusively for the heating of domestic living spaces and may not be used for any other purpose.

IMPORTANT INFORMATION ON SAFETY, STANDARDS AND ELECTRICAL CONNECTIONS

1. Use this appliance only in accordance with the guidelines in this operating manual. Any other use not recommended by the manufacturer may result in fire, electrical shock or personal injury.
2. Do not use this heater if it has previously been dropped.
3. Do not use this heater if it shows visible signs of damage.
4. This heater should be operated on a level, stable surface or attached to a wall if necessary.#
5. Keep children under the age of 3 away from the appliance unless they are under constant supervision.
6. Remove the packaging and check that the appliance is not damaged. If you are in doubt, do not use the appliance and contact your dealer.
7. Before connecting to the power supply, check that the mains voltage and type matches the information provided on the type plate of the appliance.
8. The electrical socket to which you connect the appliance must not be defective or loose, must be suitable for the current load required, and above all must be reliably earthed.
9. Avoid using an extension cable because this could overheat and cause a fire.
10. Do not position the appliance directly beneath a wall power socket. In case of doubt, have your electrical installation checked by a qualified electrician.
11. It is forbidden to adapt or modify the properties of this appliance in any way. Use only replacement parts and

accessories recommended by the manufacturer (failure to do so may result in loss of warranty cover).

12. Do not use this heater if it shows visible signs of damage.
13. Do not operate the appliance unattended. Whenever you leave the room, always switch off the appliance.
14. Do not use the appliance in small rooms where people are present who are unable to leave the room by themselves, unless they are under constant supervision.
15. Children shall not play with the appliance.
16. Keep children under the age of 3 away from the appliance unless they are under constant supervision.
17. Children over the age of 3 and under the age of 8 may only switch the appliance on or off under supervision or if they have been instructed in its safe use and understand the resultant dangers, on the condition that the appliance is positioned or installed in its normal place of use. Children over 3 and under 8 years must not be allowed to insert the plug into the socket, alter the settings, clean the appliance or perform user maintenance on the appliance.
18. Children of 8 years and above and persons with limited physical, sensory or mental capabilities or without experience or knowledge may use the appliance under supervision or if they have been instructed in its safe use and understand the resultant dangers. Children shall not play with the appliance. Do not allow children to clean or perform user maintenance on the appliance without supervision.
19. If the power cable to this appliance becomes damaged, it must be replaced by the manufacturer, its customer service department or a similarly qualified person in order to prevent hazards.
20. Keep the packaging materials away from children.
21. If swallowed, these pose a risk of suffocation!
22. The appliance is not suitable for continuous or high-precision operation.
23. Do not use this heater if it has previously been dropped.
24. This appliance is for use in dry indoor spaces only.
25. Do not use the appliance near water or high humidity, e.g. in damp cellars, or near swimming pools, baths or showers. Make sure that water cannot get into the appliance.
26. Do not use the appliance in close proximity to petrol, gas, oil, alcohol or other explosive or flammable liquids or gases.
27. To minimise the risk of fire, ensure a distance of at least one metre between the air outlet of the appliance and any highly flammable materials such as:
 - a. Pressurised containers (e.g. spray cans)
 - b. Furniture
 - c. Textiles of any kind
28. This heater should be operated on a level, stable surface or attached to a wall if necessary.
29. Never cover the appliance while it is in operation or while cooling down after use.
30. Ensure that no objects come between the appliance and the mounting wall that could touch the heating surface.
31. Always switch the appliance off before unplugging it.
32. Caution: certain parts of this appliance may become very hot and cause burns. Take particular care if children or vulnerable persons are present. Always allow the appliance to cool down before cleaning it or removing it from its mounting.
33. Unplug the appliance when you are not using it and before cleaning it or performing any maintenance.
34. Do not allow children to clean or perform user maintenance on the appliance without supervision.
35. To avoid electric shocks, do not touch the plug with wet hands.

ATTENTION	<p><u>RISK OF INJURY</u></p> <p>The appliance becomes hot while it is in operation!</p> <p>Never touch the appliance while it is in operation è this may result in severe BURNS.</p>
WARNING	<p><u>RISK OF FIRE</u></p> <p>WARNING: To prevent the heater becoming overheated, do not cover it or place any item over it.</p>
ATTENTION	<p><u>SAFE DISTANCE</u></p> <p>Maintain a safe distance of at least 1 metre from highly flammable items such as furniture , curtains, paper and similar!</p> <p><u>PLACE OF USE</u></p> <p>Position the appliance in such a way that air can flow in and out without hindrance.</p> <p><u>RISK OF BURNS</u></p> <p>This appliance becomes very hot during use and can cause burns. Take particular care if children or vulnerable persons are present.</p> <p><u>RISK OF OVERHEATING</u></p> <p>Do not use the appliance in rooms with a volume less than 4m³.</p>

Symbol markings on the appliance

Symbol:

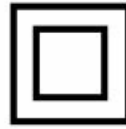


Meaning:

Attention! Do not cover

The symbol on the device indicates that it is not permitted to suspend any item (e.g. towels, clothing etc.) above the appliance or directly in front of it. To prevent overheating and the risk of fire, the heater must not be covered!

Symbol:



Protection class 2

This symbol indicates that the appliance is classified as protection class 2 (double insulated).

Class 2 appliances are not connected to the earth of the electricity supply. Instead, they feature an enhanced or doubled insulation up to the rated insulation voltage between the live parts and the parts that can be touched.

Accordingly, electrically conductive surfaces or other parts that can be touched are isolated by an enhanced or doubled insulation from live parts.

Recycling, disposal and Declaration of Conformity

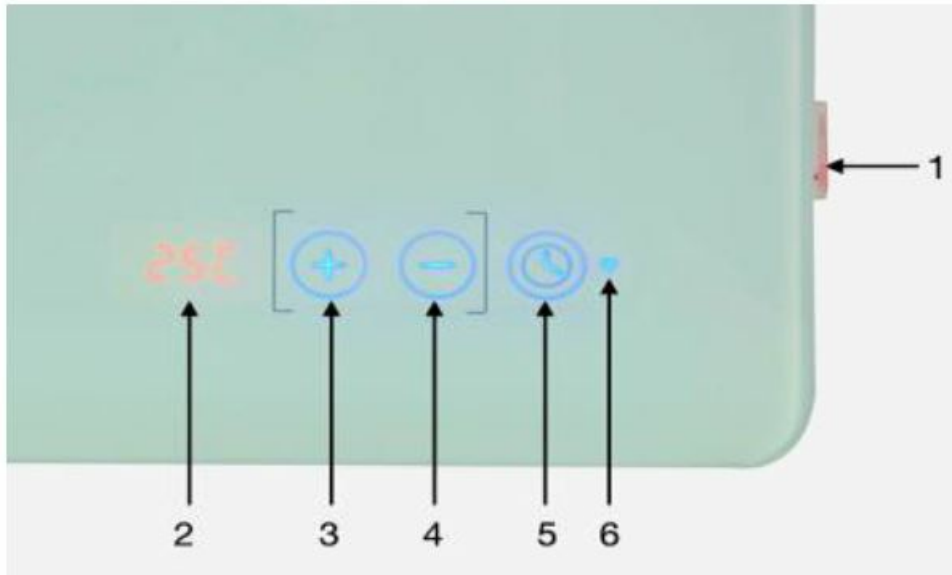
	<p><u>RECYCLING</u></p> <p>The packaging materials can be recycled. It is recommended that you dispose of them in separated waste.</p>
	<p><u>DISPOSAL</u></p> <p>The pictogram with the crossed out dustbin indicates that electrical and electronic appliances must be disposed of separately from household waste (WEEE). Electrical and electronic appliances can contain harmful and environmentally hazardous materials. Do not dispose of them in unsorted residual waste, but at a registered collection centre for waste electrical and electronic equipment. By doing so, you will help to conserve resources and protect the environment. For further information please consult your dealer or your local authorities. Directive 2012/19/EU</p>
	<p><u>DECLARATION OF CONFORMITY</u></p> <p>We hereby confirm that this article complies with the essential requirements, regulations and guidelines of the EU. The detailed declaration of conformity can be viewed at any time via following link:</p> <p>https://www.schuss-home.at/downloads</p>

Scope of delivery

- Heating panel
- Wall mounting accessories
- Operating manual

Description of the appliance

1. (49) Main switch
2. (50) Touch display
3. (51) + key
4. (52) – key
5. (53) Timer
6. (54) Wi-Fi indicator



SAFETY INFORMATION FOR INSTALLATION

The heating panel can be mounted on walls or other vertical surfaces. Please note the following points for installation:

1. Make sure that the wall or vertical surface you mount the heating panel on can carry the weight of the appliance.
2. To avoid overloading the circuit, do not connect the panel to a circuit to which other devices are already connected.
3. Do not mount the heating panel directly under a wall socket, since the strong heat development takes place above the panel and the socket could be damaged.
4. A space of at least 50 cm should be kept above, below and to the sides of the heating panel and other objects (window sill, power socket, etc.). A space of at least 1–2 metres should be kept to large items and flammable objects.
5. Make sure that there is no material in the immediate surrounding of the heating panel that can deform or discolour when the temperature is above 100°C.
6. In order not to impair the heating efficiency, do not position any furniture or other objects in front of the heating panel.
7. Never install the cable behind the panel.

NOTE We recommend that assembly be carried out by two people in order not to damage the heating panel.

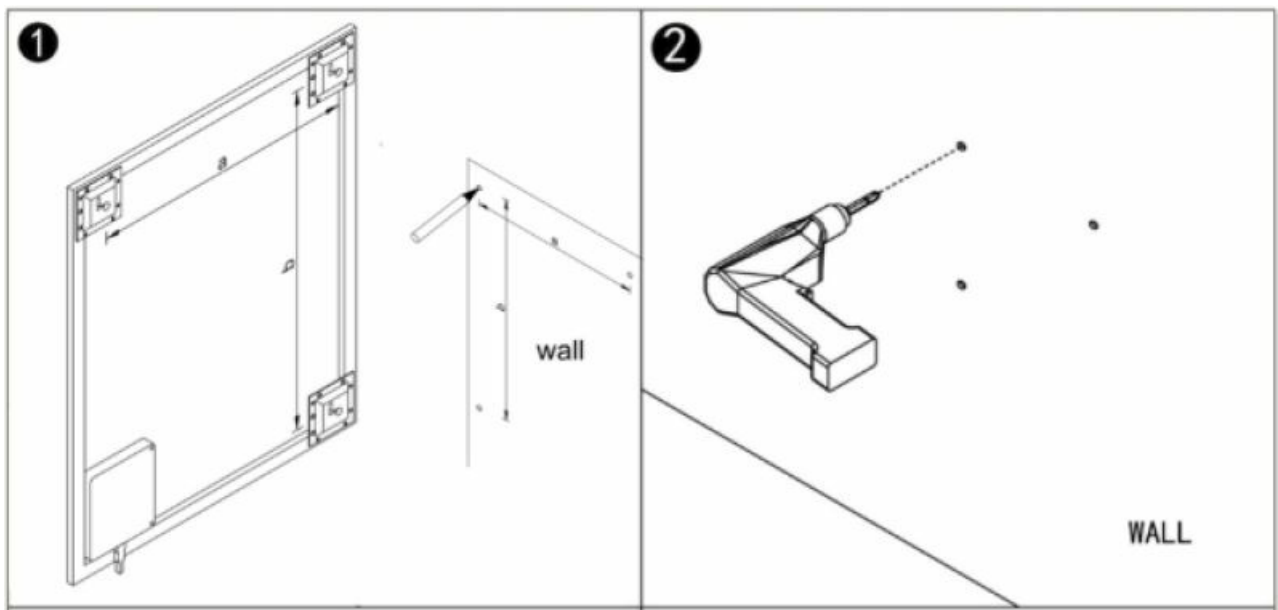
Before assembly

1. Open the box and take out the appliance.
2. Remove all packaging from the appliance.
3. Next, check the appliance for any damage.
4. Carefully unwind the power cable and check it for damage too.

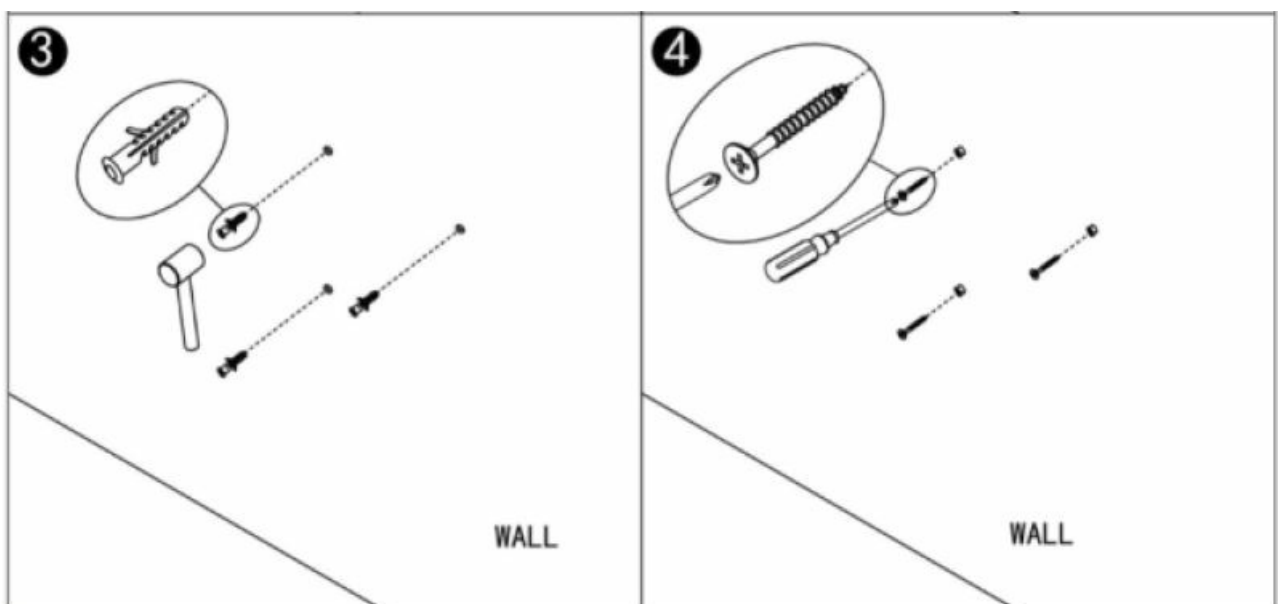
Installation instructions

Note: The kit supplied in the scope of delivery is designed for vertical installation to a stable wall. For installation on other types of walls, you will need the appropriate fittings (not included in the scope of delivery). Please make sure that heating panel can be securely installed. We highly recommend having the panel installed by a qualified electrician or SHX authorised installation technician. The heater must be installed at least 20 cm away from all items, walls, etc. A space of at least 20 cm must be kept to the floor, and a distance of at least 20 cm above the heater must also be kept.

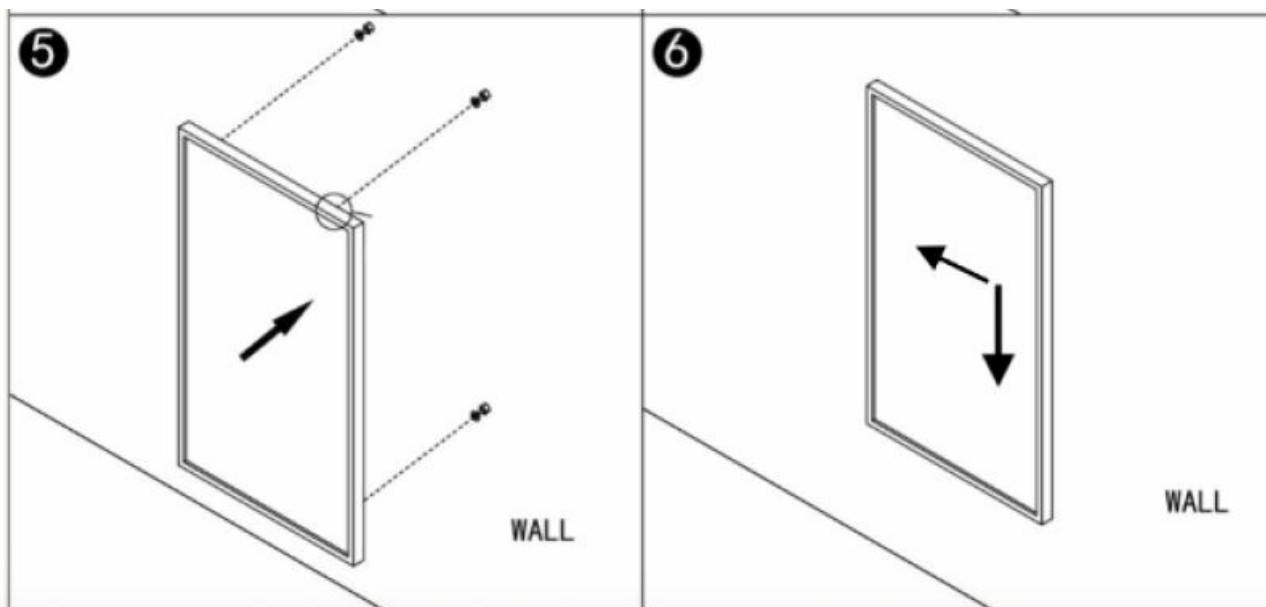
- Step 1. Use the supplied template to mark the positions of the holes on the wall.



- Step 2. Drill holes with with an 8 mm drill bit.
- Step 3. Insert the wall plugs in the holes.



- Step 4. Screw the supplied screws into the wall .
- Step 5. Attach the panel to the screws.



- Step 6. Move the panel to the left and then down until it is secured.

Starting up and functions

1. Insert the power plug in the power socket.
2. Activate the main switch (1). The current temperature is shown on the display shortly thereafter.
3. Press the + (3) or – (4) button to set the desired temperature.
4. Press the button (5) to access the manual timer. Each subsequent press increases the heating time by one hour. One press for 1 hour up to 24 presses for 24 hours are possible. The appliance switches itself off after the time has been set.
5. Press and hold the + (3) button to switch off the heater directly on the panel.

Wi-Fi and APP operation

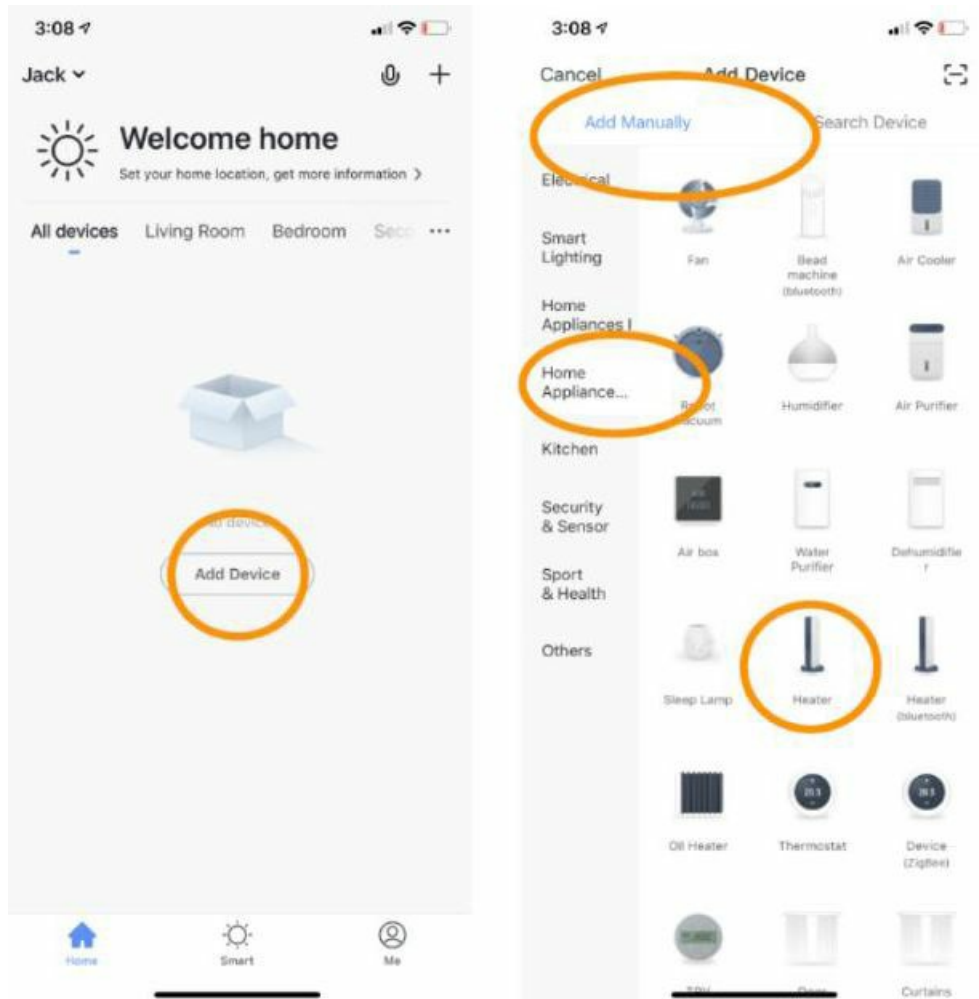
Download the Smartlife APP

Scan the QR code below to download the 'Smartlife' app, or search for the 'Smartlife' app in the App Store or in Google Play to start the procedure to download the app. Open the app and register your telephone number or email address.



Connecting to Wi-Fi:

- Step 1: Activate the ON/OFF switch. Press the ON/OFF button. The WI-FI symbol will start to flash rapidly. Open the APP on your smartphone and add your device. Select 'Add device', then 'Add manually', 'Home appliances (small)' and then select 'Heater' to add the appliance.
- Step 2: Enter the your home network's WI-FI password. Make sure that your home Wi-Fi is working and position the heater and the smartphone as close as possible to the Wi-Fi router. Please note that this heater only works with 2.4 GHz WI-FI networks. It does not currently support 5 GHz networks. Also, make sure that your internet router has enough capacity to add a new device.



- Step 3: Wait till the connecting status shows 100% to finish the settings, and the WI-FI signal on the control box will stop flashing. If no connection could be established, switch off the heater and power it back on again after a few seconds. Press and hold the WI-FI button on the control box until the WI-FI symbol is flashing slowly, and then repeat the connection process.

Note: The developers of the app are constantly striving to improve the app, meaning that changes in the operation may occur. You can use the QR code shown below to download the latest version of the WI-FI app.



Disconnecting the WI-FI connection

To disconnect the WI-FI of your current heater, press and hold the WI-FI button for 5 seconds until the WI-FI indicator begins flashing again. Now the heater can be operated manually, without having to establish a connection to Wi-Fi.

Cleaning and maintenance

Keep the heating panel clean. Before cleaning or performing maintenance, switch the appliance off, remove the plug from the socket and allow to cool.

Clean the outside of the heating panel regularly with a dry or very slightly moistened cloth. Do not use any abrasive soap, spray, detergents or scouring agents, wax, glazing agents or other chemical solutions. Dust can be removed from the rear of the appliance with a duster. To clean the back of the appliance thoroughly, unscrew the heating panel from the wall.

Technical information

Article number:	SHXCM600WIFI
Input voltage:	220-240 V
Frequency:	50 Hz
Power range:	600 W
Heating temperature range:	5–37 °C
Protection class:	II
Weight/Dimensions	7.5 kg / 60 × 80 × 5 cm
Contact address for further information:	Schuss Home Electronic GmbH Scheringgasse 3, A-1140 Vienna, Austria Serviceline: +43 (1) 97 0 21 www.schuss-home.at FB no.: 236974 t / FB court: Vienna

Required data for single-room electrical heating devices

Article number SHXCM600WIFI						
Information	Symbol	Value	Unit		Information	Unit

Single-room electric storage heaters only: Method of heat transfer control	
Manual control of heat transfer with integrated thermostat	No
Manual control of heat transfer with feed back of room and/or outside temperature	No
Fan-assisted heat outlet	No
Type of heat output/room temperature control	
Single heat output level, no room temperature control	No
Two or more manually settable output levels, no room temperature control	No
Room temperature control with mechanical thermostat	No
With electronic room temperature control	No
Electronic room temperature control and timed control through the day	No
Electronic room temperature control and timed control through the week	Yes
Other control options	
Room temperature control with presence detection	No
Room temperature control with detection of open windows	No
With remote control option (WiFi)	Yes
With adaptive start-up control	No
With operating time limiter	No

		With ball-type sensor	No
Contact information:	Schuss Home Electronic GmbH Scheringgasse 3 – 1140 Vienna – Austria Tel.: +43 (0)1/ 970 21		

WARRANTY

By purchasing this SHX quality product, it means you have decided to place trust in durability, reliability and innovation.

For this SHX appliance, we grant a warranty period of 2 years from the date of purchase valid in Austria and Germany!

If, contrary to expectations, service work on your appliance is still necessary during this period, we hereby guarantee either free repairs (spare parts and working time) or (at the discretion of Schuss) that we will replace the product. If it is not possible to either repair or exchange the product for economic reasons, we reserve the right to create a time value credit.

In any case, please contact the customer hotline as a first step (see the operating manual – ‘contact addresses for further information and service line’).

We would like to point out that repair work that has not been performed by authorised contract workshops will immediately terminate the validity of this warranty.

This warranty does not cover:

- Damage due to non-adherence to the operating manual
- Repair or replacement of parts due to normal wear and tear
- Appliances that are used commercially, even in part
- Appliances mechanically damaged due to external influence (any fall(s), impact(s), breakage(s), improper use, etc.) as well as signs of wear and tear of an aesthetic nature
- Appliances that have been improperly treated
- Appliances that have not been opened by our authorised service workshop
- Unfulfilled consumer expectations
- Damage caused by force majeure, water, lightning and overvoltage
- Appliances that have had their type designation and/or serial number on the appliance changed, deleted, made illegible or removed
- Defects due to extreme contamination
- Services outside our contract workshops, the transport costs to either an authorised workshop or to us and back, and the associated risks

We would like to expressly point out that a fixed amount of €60 (indexed basis CPI 2015, June 2020) will be charged within the warranty period in the event of operating errors or if no error has been detected.

The provision of a warranty service (repairs or replacement of the appliance) does not extend the absolute warranty period of 2 years from the date of purchase.

The 2-year warranty is only valid upon presentation of the proof of purchase (name and address of the dealer as well as the complete appliance designation must be included) and the corresponding warranty certificate, on which the appliance type and the serial number (on the box and on both the back and underside of the appliance) are to be noted! Without presenting the warranty certificate, only the legal warranty applies!

We would like to expressly point out that the statutory warranty rights are unaffected by this warranty and continue unabated.

A liability for damage on the part of Schuss Home Electronic GmbH and its vicarious agents only exists in the event of gross negligence or intent. In any event, liability for lost profits, *expected but not occurred savings*, *consequential damage and damage arising from claims of third parties is excluded*.

The *contact* address of the respective service workshop is available on our homepage www.schuss-home.at. Congratulations on making your choice. We wish you a lot of pleasure with the SHX appliance!

DECLARATION OF CONFORMITY

Schuss Home Electronic GmbH Scheringgasse 3 – 1140 Vienna – Austria

Declares that the product

Description: INFRARED MIRROR HEATER with Wi-Fi **Model no.:** SHXCM600WIFI

complies with following directives, standards and/or regulations:

EMC Directive 2014/30/EU, LVD Directive 2014/35/EU, RED Directive 2014/53/EU, ErP Directive 2009/125/EC Regulation (EC) No. / Regulation (EC) No. EU 206/2012 RoHS Directive 2011/65/EU and (EU) 2015/863 RED Directive 2014/53/EU

Safety:

- EN 60335-2-30:2009+A11:2012+A1:2020+A12:2020
- EN 60335-1:2012+A11:2014+A13:2017+A1:2019+A2:2019+A14:2019 EN 60335-2-30:2009+A11:2012+A1:2020
- EN 60335-1:2012+A11:2014+A13:2017+A1:2019+A2:2019+A14:2019

Health:

- EN 62233:2008
- EN 62233:2008
- EN 62311:2008, EN 50665:2017

EMC:

- EN 301 489-1 V2.2.3 (2019-11)
- EN 301 489-17 V3.2.4 (2020-09)

- EN 55014-1:2017+A11:2020, EN 55014-2:2015
- EN IEC 61000-3-2:2019, EN 61000-3-3:2013+A1:2019

Radio:

EN 300 328 V2.2.2 (2019-07)

CE marking on the product



Declaration reference:

Schuss Home Electronic GmbH Scheringgasse 3 – 1140 Vienna – Austria


Authorised representative of the manufacturer Place and date of issue: Vienna, 2022-04-11

 **SCHUSS**
HOME ELECTRONIC GMBH
1140 Wien, Scheringgasse 3
Tel. 43(0)1 870 21, Fax: 01 222
www.schuss-home.at





[Signature]

Bevollmächtigter Vertreter des Herstellers
Authorized representative of manufacture

Documents / Resources

 <p>BEDIENUNGSANLEITUNG INFRAROTHEIZUNG MIT WIFI SHXCM600WIFI</p> <p>WICHTIGES HINWEIS: VIELLEICHT, DASS SIE BEI DER BESICHTIGUNG VON DIESEM PRODUKT MIT EINER VON UNSEREN PRODUKTEN VEREINBARTE VEREINBARTEN.</p>	<p>SHX SHXCM600WIFI Infrared Mirror Heater with Wifi [pdf] User Manual SHXCM600WIFI Infrared Mirror Heater with Wifi, SHXCM600WIFI, Infrared Mirror Heater with Wifi, Infrared Mirror Heater, Mirror Heater, Heater</p>
---	---

References

-  [Welcome to Your New Home Page!](#)
-  [Home » Schuss Home Electronic](#)
-  [Home » Schuss Home Electronic](#)
-  [Downloads » Schuss Home Electronic](#)

