



## Shuttle X50V8 All In One XPC User Guide

[Home](#) » [Shuttle](#) » Shuttle X50V8 All In One XPC User Guide 

### Contents

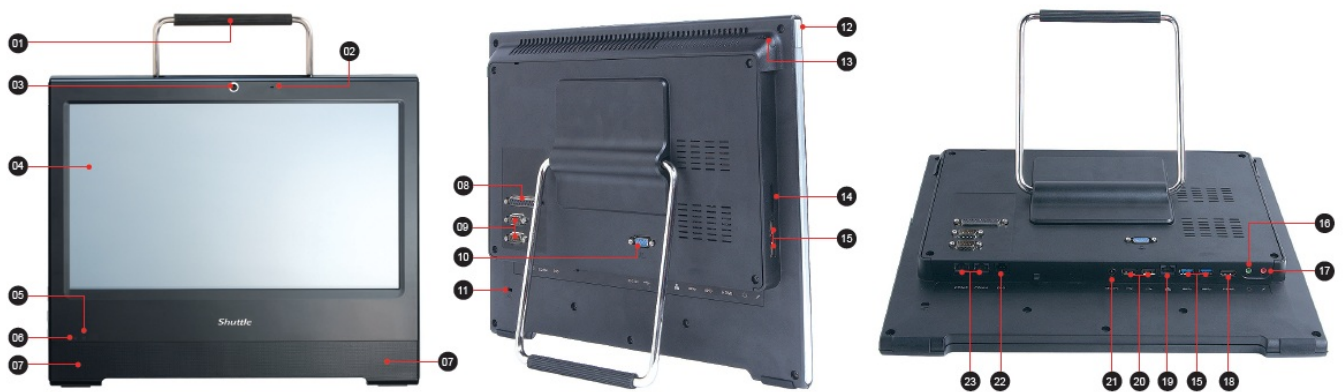
- 1 Shuttle X50V8 All In One XPC
- 2 Product Overview
- 3 Hardware Installation
  - 3.1 Begin Installation
  - 3.2 Memory Module Installation
  - 3.3 HDD or SSD Installation
  - 3.4 M.2 Device Installation
  - 3.5 How to use the Touch Panel
- 4 Safety Information
- 5 Documents / Resources
  - 5.1 References
- 6 Related Posts

# *Shuttle*<sup>®</sup>

**Shuttle X50V8 All In One XPC**



## Product Overview



1. Stand / Handle
2. Microphone
3. Webcam
4. LCD Display (Single Touch)
5. Hard Disk Drive LED
6. Power LED
7. Stereo Speakers
8. Printer Port (Optional)
9. COM1 and COM2 Ports (Optional)
10. VGA Port
11. Kensington® Lock Hole
12. Power Button
13. Stylus
14. SD Card Reader
15. USB 3.2 Gen 1 Ports
16. Headphones / Line-out Jack

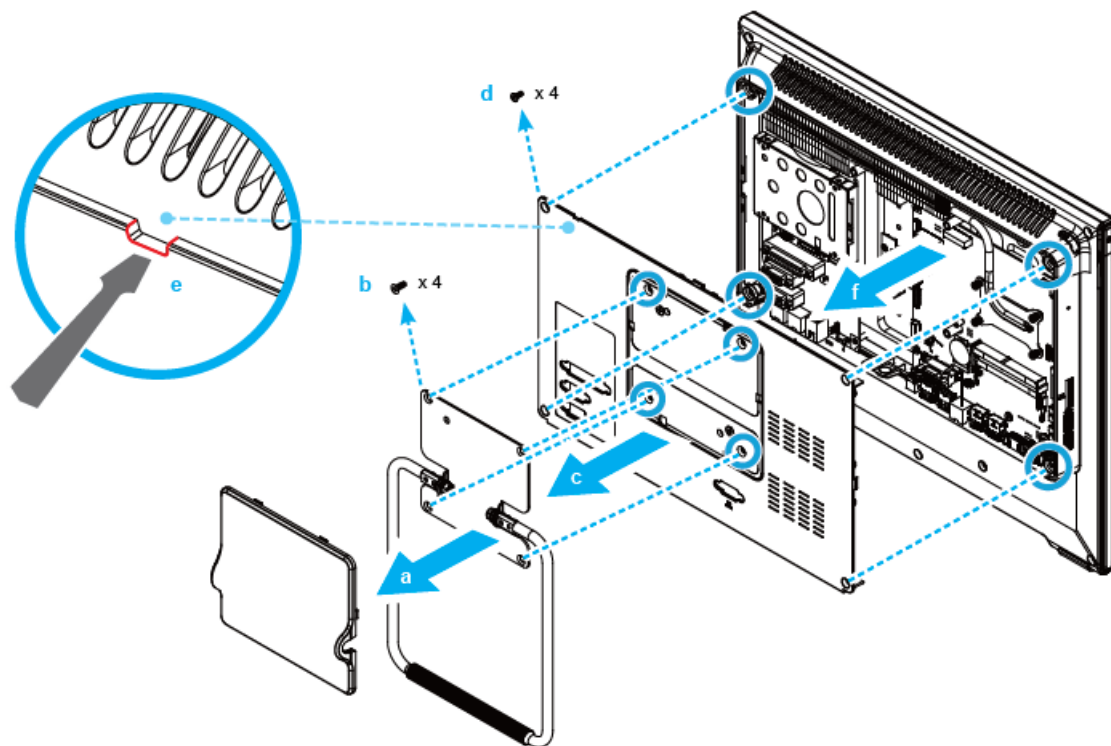
- 17. Microphone Jack
- 18. HDMI Port HDMI
- 19. LAN Port
- 20. USB 2.0 Ports
- 21. Power jack (DC-IN) DC-IN
- 22. RJ11 DIO Port for Cash Drawer (Optional)
- 23. COM3, COM4 over RJ45 (Optional)

## Hardware Installation

### Begin Installation

For safety reasons, please ensure that the power cord is disconnected before opening the case.

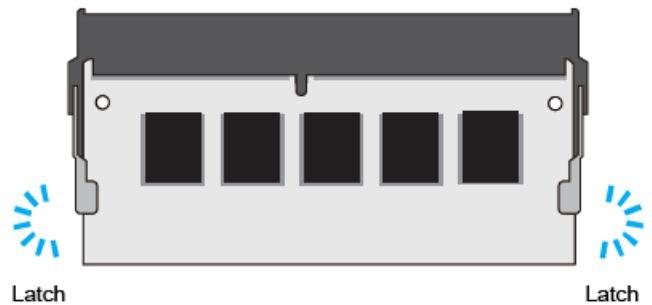
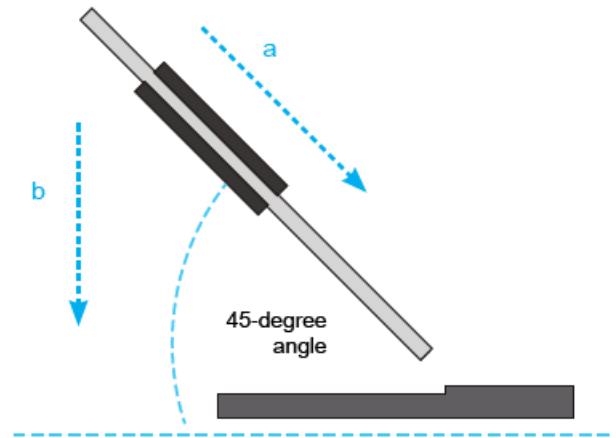
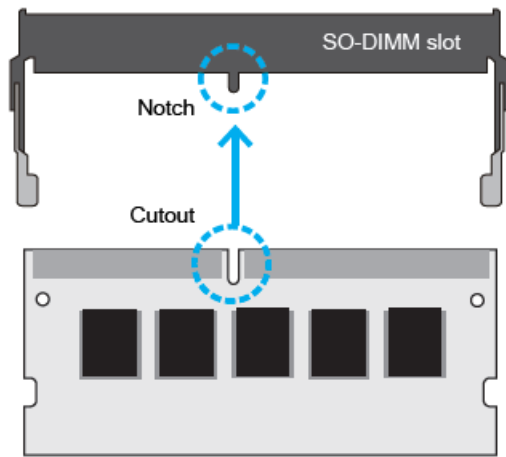
1. Remove the cover on the back of the X50V8 first, unscrew four screws of the stand mount and remove the stand.
2. Unscrew four screws of the back cover and remove it.



### Memory Module Installation

This motherboard does only support 1.2 V DDR4 SO-DIMM memory modules.

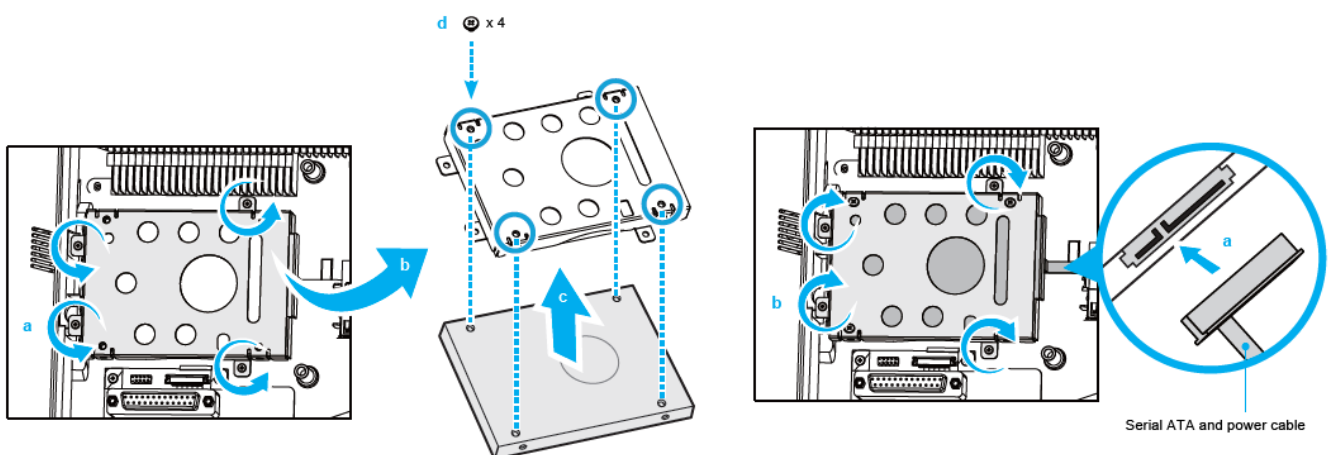
1. Locate the SO-DIMM slots on the motherboard.
2. Align the notch of the memory module with the one of the relevant memory slot.
3. Gently insert the module into the slot in a 45-degree angle.



4. Carefully push down the memory module until it snaps into the locking mechanism and put the mylar back in place.
5. Repeat the above steps to install an additional memory module, if required.

### HDD or SSD Installation

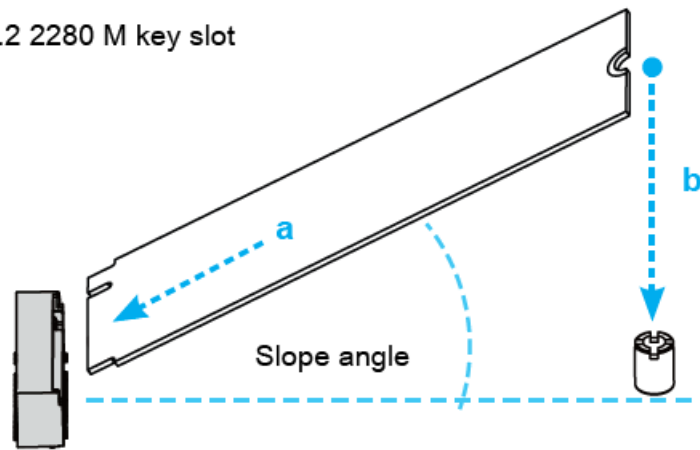
1. Unscrew four screws of the bracket and remove it.
2. Mount the HDD or SSD into the bracket with four screws.
3. Connect the Serial ATA and power cable to the HDD or SSD.
4. Install the HDD or SSD & bracket in the chassis and tighten the HDD or SSD & bracket with four screws.



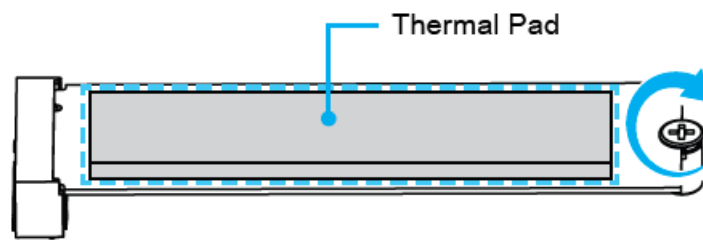
### M.2 Device Installation

1. Locate the M.2 key slots on the motherboard.

➤ M.2 2280 M key slot



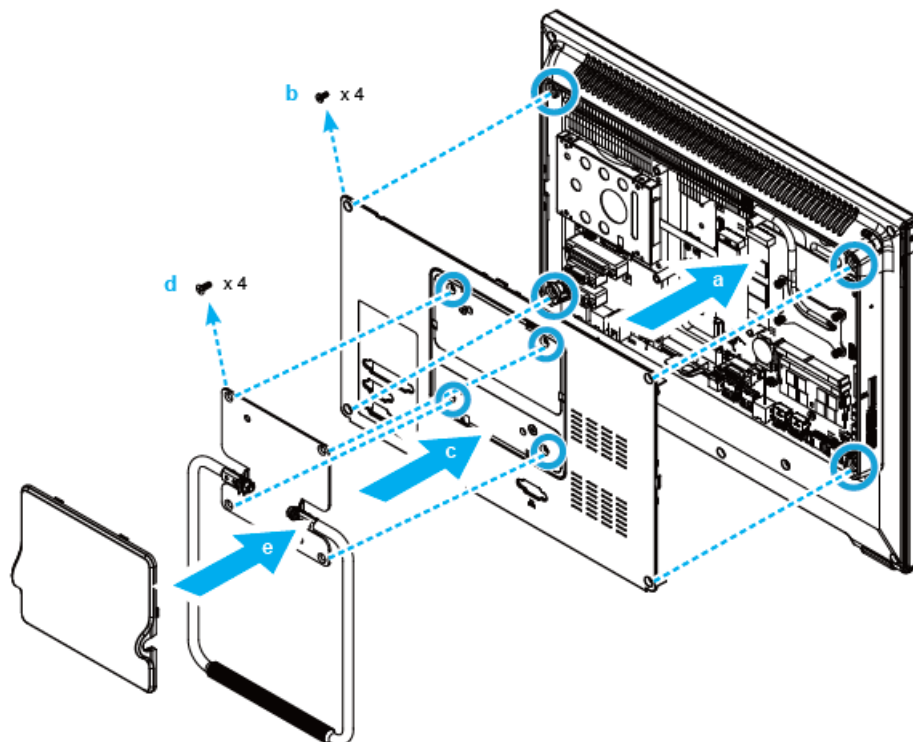
2. Install the M.2 device into the M.2 slot and secure with the screw.



Pasting a thermal pad on the M.2 SSD can effectively reduce its temperature.

### Complete

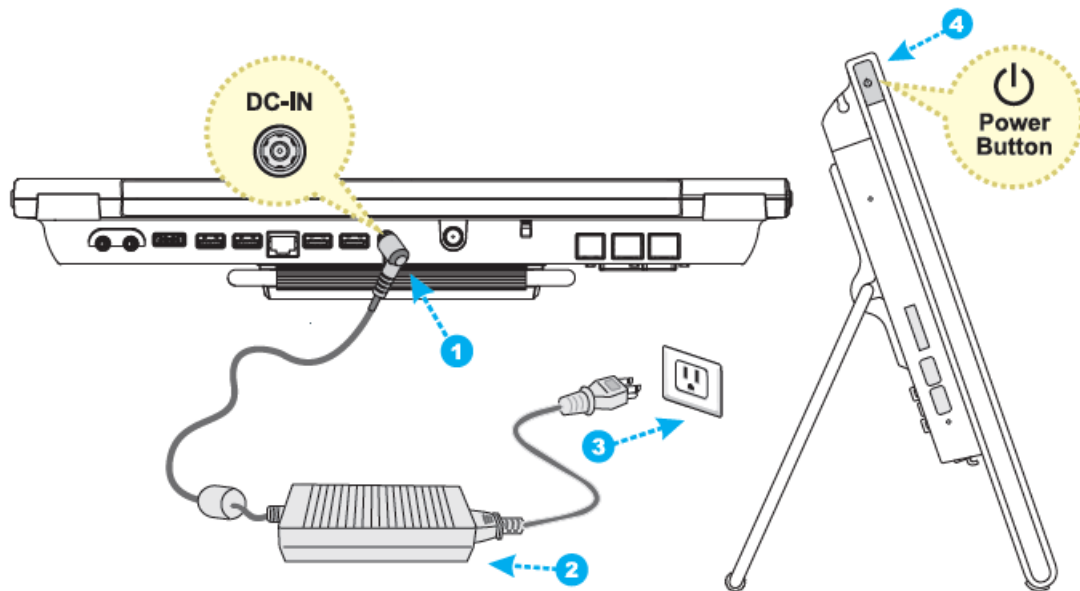
1. Replace the back cover. Refasten the standard the back cover with eight screws.
2. Replace the cover, complete.



### Powering on the system

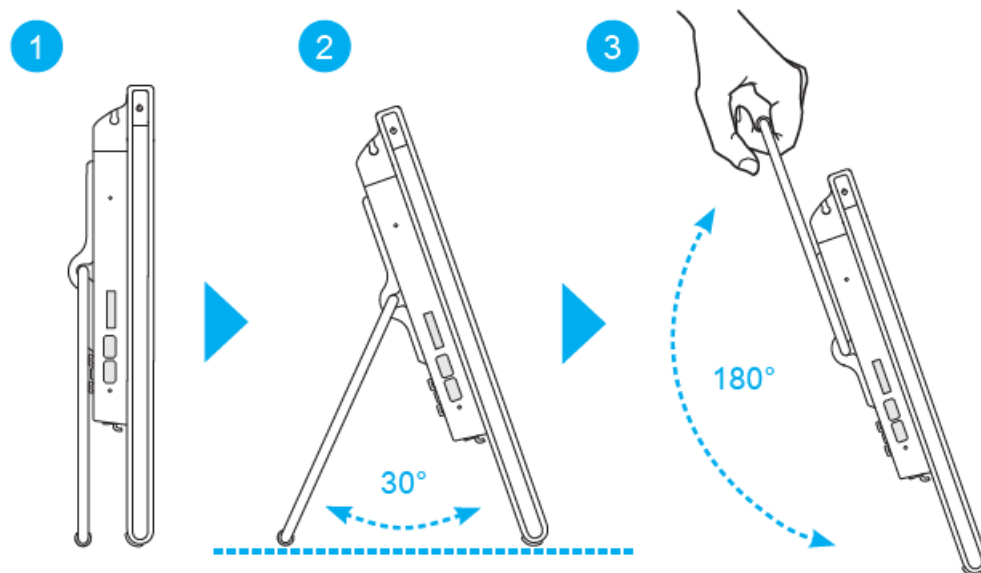
- Follow the steps (1~3) below to connect the AC adapter to the “DC-IN jack”.

Press the “Power Button” to turn on the system.



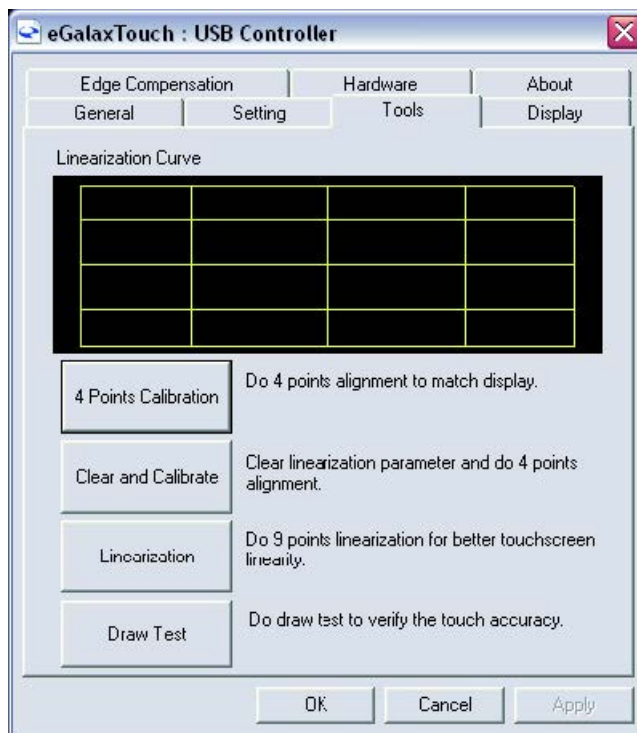
### Placing on a desk

- To place the machine on a desk and to carry it, do the following:
  1. Place the X50V8 on a flat surface such as a table.
  2. Pull the stand upwards to an angle of 30°.
  3. To carry or move your X50V8, fully extend the angle to 180°.

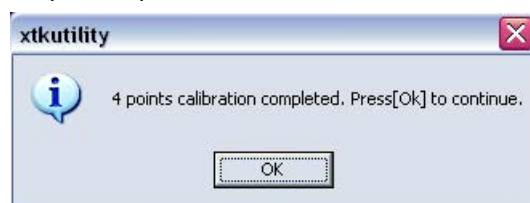


### 4. Points Calibration (Installation from CD-ROM)

- Run the screen calibration program and perform a 4 points on-screen calibration.  
Click Start / All Programs / Galax Touch / Configure Utility Select [Tools] tab and click [4 Points Calibration]

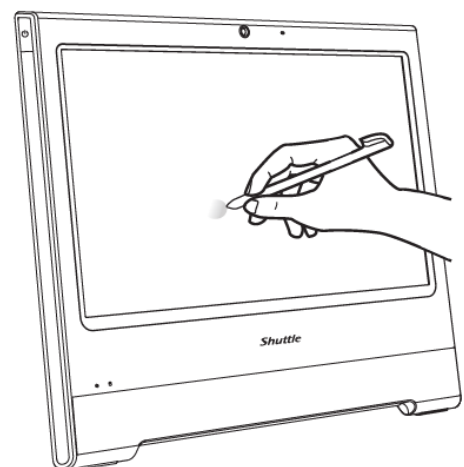
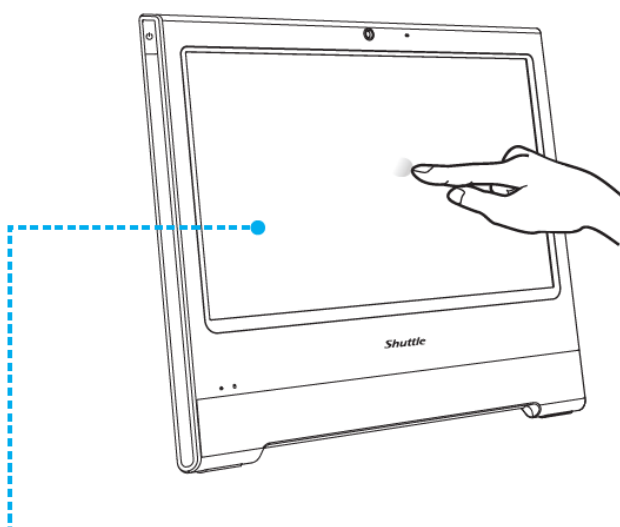


- Touch and hold the center of the target.  
Repeat on four corners and the screen will adjust automatically.
- When the 4 points calibration is completed, press “OK” to continue.



### How to use the Touch Panel

- Experience the ease of managing your digital life with a few touches by using the stylus.  
The touch of your finger replaces the mouse and this is all you need to interact with the X50V8.
  - Touch = left-click on the mouse
  - Touch and hold = right-click on the mouse



### Cleaning the screen

Follow these guidelines for cleaning the outside and handling the screen of the computer:

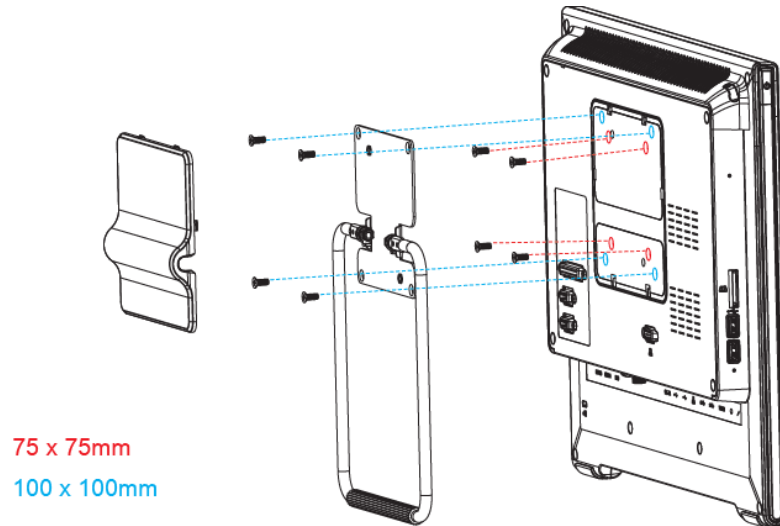
Turn off the system and disconnect all cables. Use a cleaning cloth which is soft, lint-free and a little



damp to gently wipe the screen surface. Do not spray liquids directly onto the device.

## VESA mounting it to the wall

- If you are mounting your X50V8 to a wall, remove the cover on the back of the X50V8 first. Unscrew four screws of the stand mount and remove the stand. The VESA standard lets users mount it on to walls easily. Please refer to the user guide of the wall/arm mount kit you bought separately to install it.



The X50V8 can be mounted to a wall using a VESA compatible 75 x 75 mm or 100 x 100 mm wall/arm bracket.

## Safety Information

Incorrectly replacing the battery may damage this computer. Replace only with the same or equivalent as recommended by Shuttle. Dispose of used batteries according to the manufacturer's instructions

This device complies with Part 15 of the FCC Rules. Operation is subject to the following two conditions:

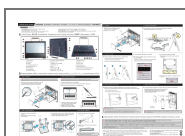
1. This device may not cause harmful interference, and
2. This device must accept any interference received, including interference that may cause undesired operation.

This device meets the requirements for the EU conformity in accordance to the currently valid EU directives.

\* The equipment was evaluated for use in a maximum air ambient temperature of 40 °C.  
All bundled parts, power cord included, shall not be used without this product.

The product's colour and specifications may vary from the actually shipping product.

## Documents / Resources



[Shuttle X50V8 All In One XPC](#) [pdf] User Guide  
X50V8 All In One XPC, X50V8, All In One XPC, XPC, X50V8 XPC

## References



-  [Shuttle Global - X50V8 SERIES](#)

Manuals+.