



Shuttle Series Quick Guide User Manual

[Home](#) » [Shuttle](#) » Shuttle Series Quick Guide User Manual 













Shuttle Series Quick Guide

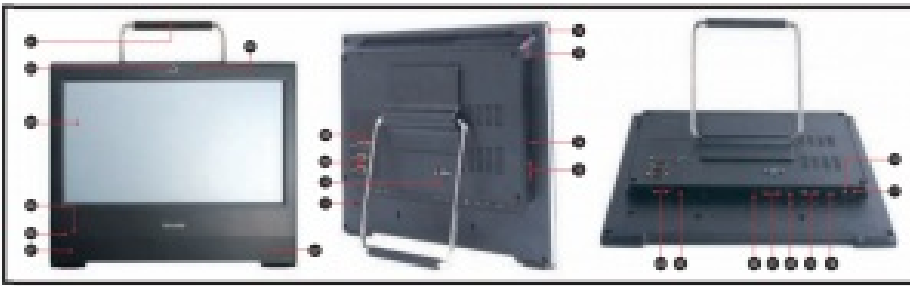


Contents

- [1 Front / Rear / Side View](#)
- [2 Begin Installation](#)
- [3 HDD Installation](#)
- [4 Memory Module Installation](#)
- [5 Complete](#)
- [6 Placing on the desk](#)
- [7 Powering on the system](#)
- [8 Cleaning the screen](#)
- [9 How to use the Touch Panel](#)
- [10 VESA mounting it to the wall](#)
- [11 4 Point Calibration \(CD-ROM drive install\)](#)
- [12 Safety Information](#)
- [13 Documents / Resources](#)
- [14 Related Posts](#)

Front / Rear / Side View

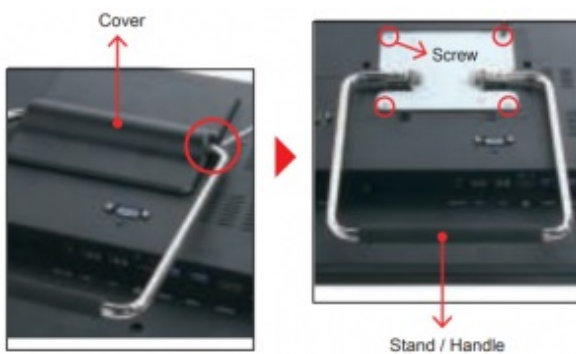
1. Stand / Handle
2. Microphone
3. Webcam
4. LCD Display (Single Touch)
5. Hard Disk Drive LED 
6. Power LED 
7. Stereo Speakers
8. Printer Port (Optional)
9. COM1 and COM2 Ports (Optional)
10. VGA Port 
11. Kensington® Lock Port 
12. Power Button 
13. Stylus Pen
14. SD Card Reader 
15. USB 2.0 Ports 
16. Headphone / Line-out Jack 
17. Microphone Jack 
18. HDMI Port **HDMI**
19. USB 3.0 Ports 
20. LAN Port 
21. USB 2.0 Ports 
22. DC In **DC-IN**
23. RJ11 DIO Port for Cash Drawer (Optional)
24. COM3, COM4 over RJ45 (Optional)



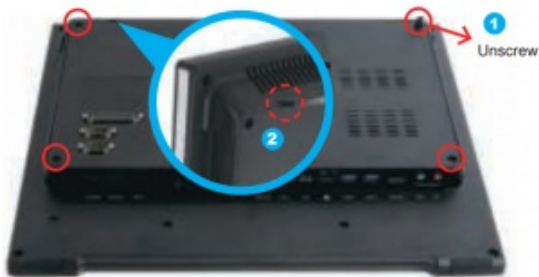
Begin Installation

⚠ For safety reasons, please ensure that the power cord is disconnected before opening the case.

1. Remove the cover on the back of the X50V4 first, unscrew four screws of the stand mount and remove the stand.

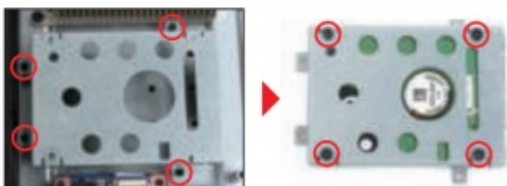


2. Unscrew four screws of the back cover and remove it.

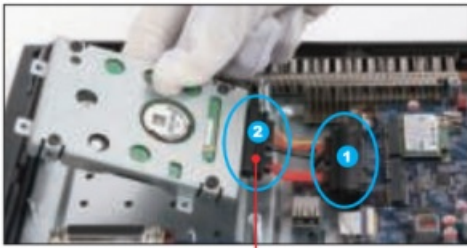


HDD Installation

1. Unscrew four screws of the bracket and remove it.
2. Mount the HDD into the bracket with four screws.



3. Connect the Serial ATA and power cables to the HDD.



Take out the Serial ATA and power cables from accessory box.

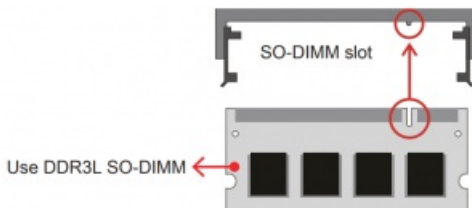
4. Install the HDD & bracket in the chassis and tighten the HDD & bracket with four screws.



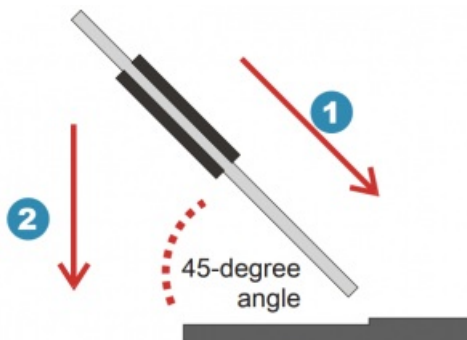
Memory Module Installation

⚠ *This mainboard does only support 1.35V DDR3L memory modules.*

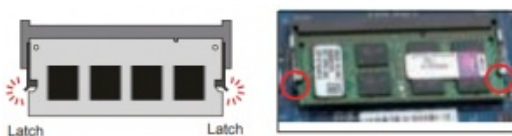
1. Locate the SO-DIMM slot on the mainboard.
2. Align the notch of the memory module with the one of the memory slot.



3. Gently insert the module into the slot in a 45-degree angle.

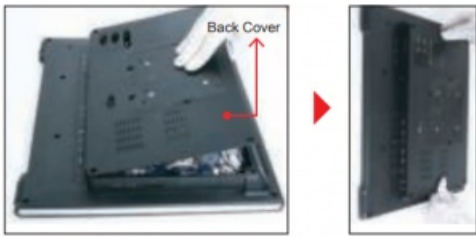


4. Carefully push down the memory module until it snaps into the locking mechanism.

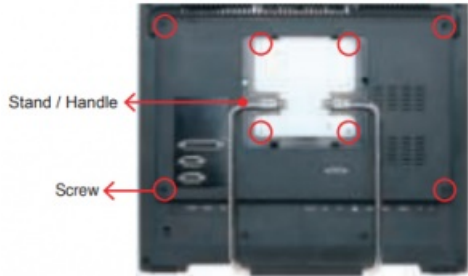


Complete

1. Replace the back cover.



2. Refasten the stand and the back cover with eight screws.



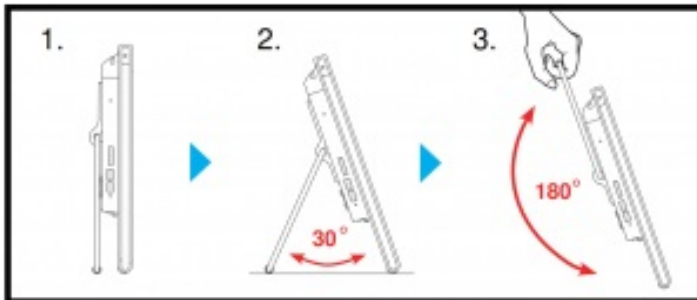
3. Replace the cover, complete



Placing on the desk

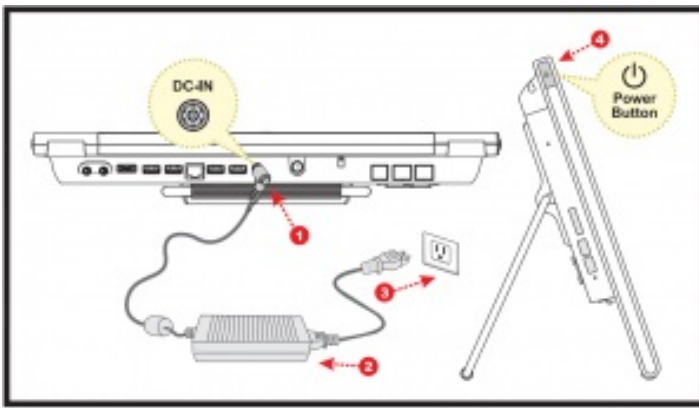
- To place the machine on the desk and to carry it, do the following:

Place the X50V4 on a flat surface such as a table (Picture 1), and pull the stand upwards to an angle of 30° (Picture 2). To carry or move your X50V4 fully extend the angle to 180° (Picture 3).



Powering on the system

- Follow the steps (1~3) below to connect the AC adapter to the “DC-IN jack”.
Press the “Power Button” to turn on the system.



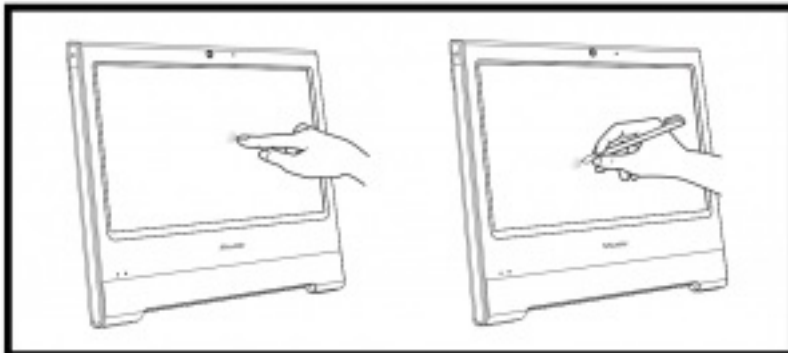
Cleaning the screen

- Follow these guidelines for cleaning the outside and handling the screen of the computer:
Turn off the system and disconnect all cables.
Use a damp, or cleaning cloth, soft, lint-free cloth with gentle water only and gently wipe the screen surface.



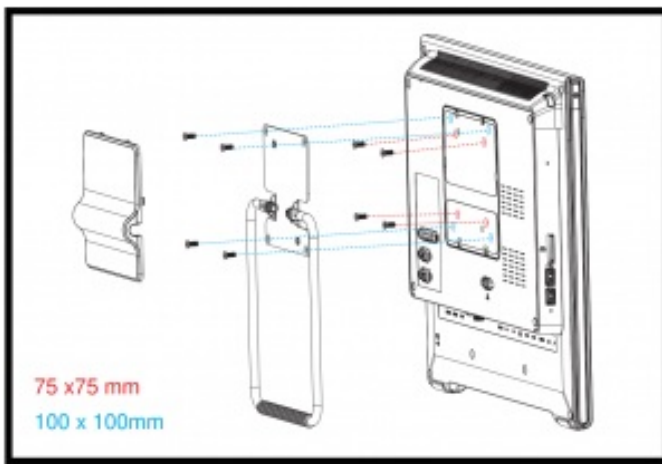
How to use the Touch Panel

- X50V4 brings digital life for an easy touch experience. Experience the ease of managing your digital life with a few touches or the use of the stylus pen. The touch of your finger replaces the mouse and is all you need to interact with the X50V4.
- Touch = left-click on the mouse
- Touch and hold = right-click on the mouse



VESA mounting it to the wall

- If you are mounting your X50V4 to the wall, remove the cover on the back of the X50V4 first.
Unscrew four screws of the stand mount and remove the stand.
The VESA standard lets users mount it on to walls easily.
Please refer to the user guide of the wall/arm mount kit you bought to install it.



Note : The X50V4 can be mounted to a wall using a VESA compatible 75 x 75 mm or 100 x 100mm wall/arm bracket.

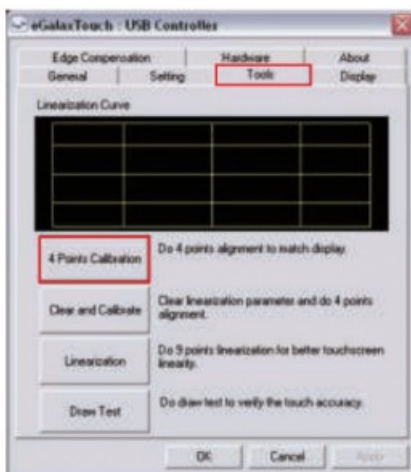


4 Point Calibration (CD-ROM drive install)

- Run the screen calibration program and correct 4 point locations on screen with the panel.

Click Start / All Programs / eGalax Touch / Configure Utility

Select [Tools] tab and click [4 Points Calibration]



Safety Information

Read the following precautions before setting up a Shuttle X50V4.

CAUTION

Do not walk on the power cord or allow anything to rest on it.

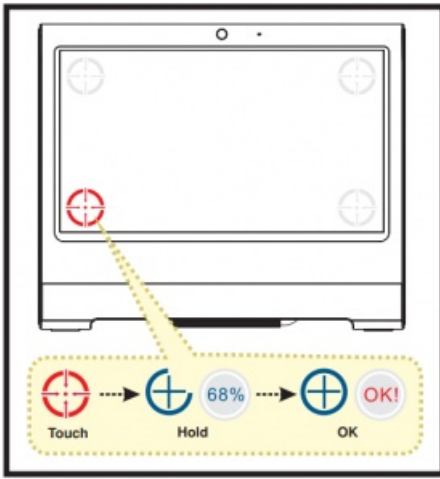
CAUTION

Danger of explosion if battery is incorrectly replaced. Replace only with the same or equivalent type recommended by the manufacturer.

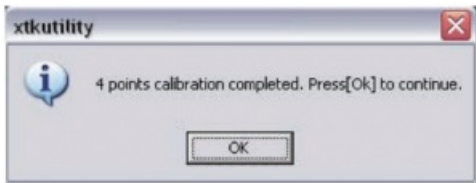
Dispose of used batteries according to the manufacturer's instructions.

- Touch and hold the center of the target.

Repeat on four corners and the screen will adjust automatically.



- When the 4 points calibration completed, press “OK” to continue.



Documents / Resources



[Shuttle Series Quick Guide](#) [pdf] User Manual
Series Quick Guide