



# Shuttle P92U PC with Capacitive Touchscreen User Guide

[Home](#) » [Shuttle](#) » Shuttle P92U PC with Capacitive Touchscreen User Guide 

## Contents

- [1 Shuttle P92U PC with Capacitive Touchscreen](#)
- [2 Product Information](#)
- [3 Product Using Instructions](#)
- [4 Product Overview](#)
- [5 Hardware Installation](#)
- [6 Fcc Statement](#)
- [7 Documents / Resources](#)
  - [7.1 References](#)

# *Shuttle*<sup>®</sup>

**Shuttle P92U PC with Capacitive Touchscreen**



## Product Information

- **Product Name:** P92U
- **Model Number:** 53R-P92U03-2002
- **Product Website:** <http://bit.ly/P92USERIES>

## Product Using Instructions

### M.2 Device Installation

1. Locate the M.2 key slots on the motherboard.
  - M.2 2242/2260/2280 M key slot
  - M.2 2230 E Key slot
2. Install the M.2 device into the M.2 slot and secure with the screw.
  - M.2 2242/2260/2280 M key slot Thermal Pad
  - M.2 2230 E Key slot

### Memory Module Installation:

**Note:** This motherboard only supports 1.2V DDR4 SO-DIMM memory modules.

1. Locate the SO-DIMM slots on the motherboard and lift the mylar (Do not tear it off).
2. Align the notch of the memory module with the relevant memory slot.

3. Gently insert the module into the slot at a 45-degree angle.

Repeat the above steps to install an additional memory module, if required.

## HDD or SSD Installation

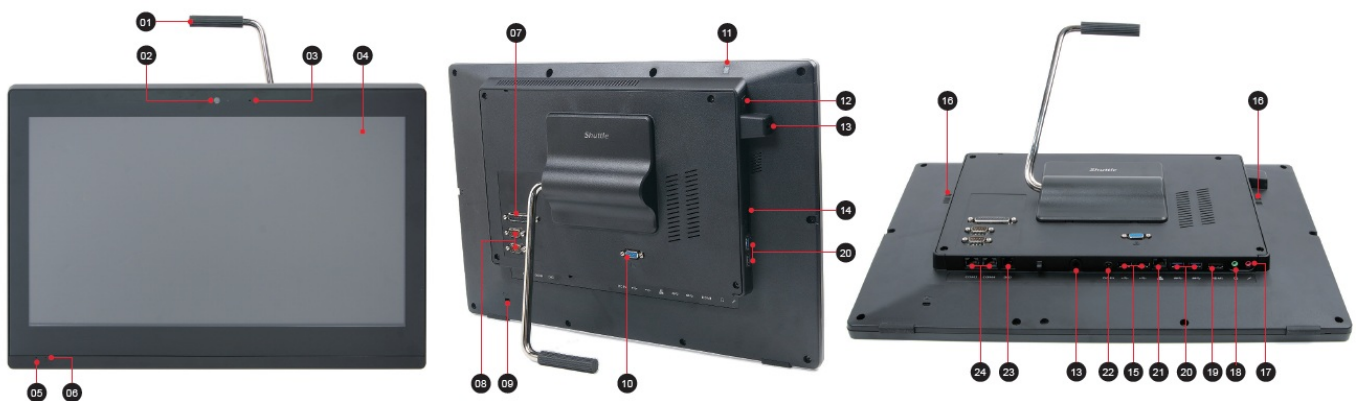
1. Unscrew four screws of the bracket and remove it.
2. Mount the HDD or SSD into the bracket with four screws.

## Powering on the system

1. Connect the AC adapter to the power jack (DC-IN).
2. Press the Power button to turn on the system.

More information on this product can be found at: <http://bit.ly/P92USERIES>

## Product Overview



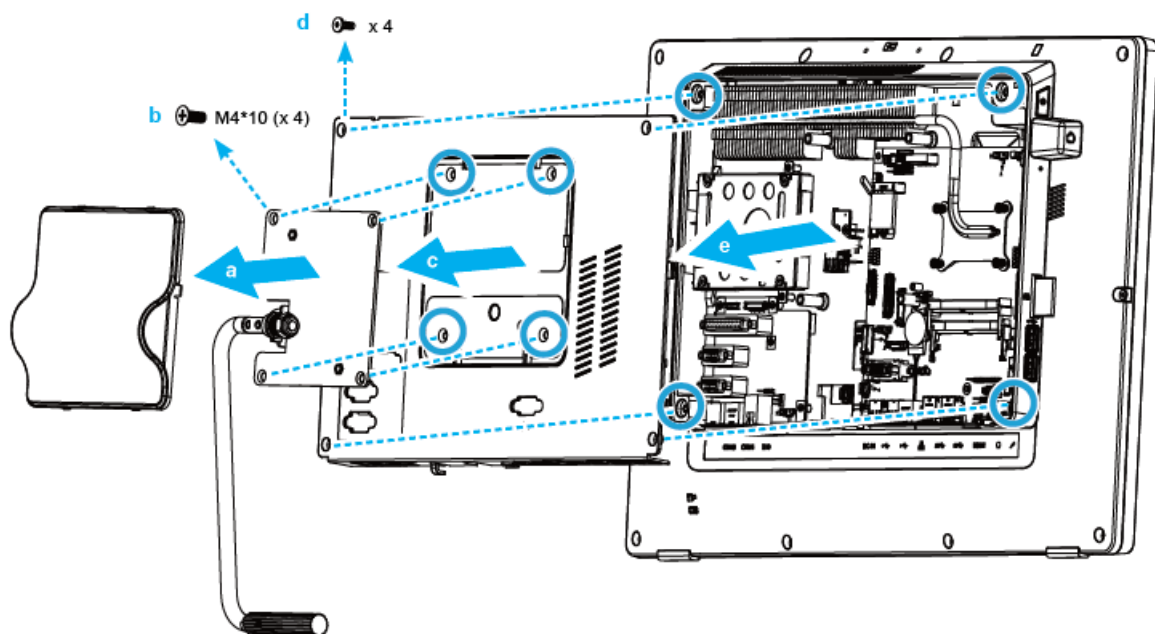
1. Stand / Handle
2. Webcam
3. Microphone
4. LCD display (Multi-touch)
5. Power LED
6. Hard disk drive LED
7. Parallel port (optional)
8. COM 1 and COM 2 ports (optional)
9. Kensington® Lock hole
10. D-Sub (VGA) port
11. NFC (optional)
12. Power button
13. Two 4G external antennas (optional)
14. SD card reader
15. USB 2.0 ports
16. Stereo speakers
17. Microphone jack

- 18. Headphone / Line-out jack
- 19. HDMI port
- 20. USB 3.2 Gen 1 ports
- 21. LAN (RJ45) port
- 22. Power jack (DC-IN)
- 23. Cash drawer (RJ11) port (optional)
- 24. COM 3 and COM 4 ports (optional)

## Hardware Installation

### Begin Installation

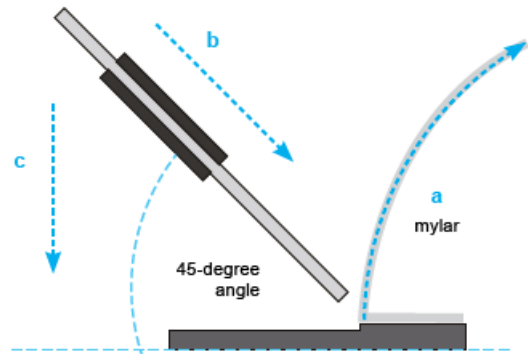
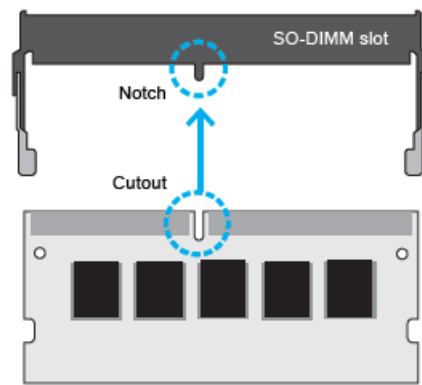
**Warning:** For safety reasons, please ensure that the power cord is disconnected before opening the case.



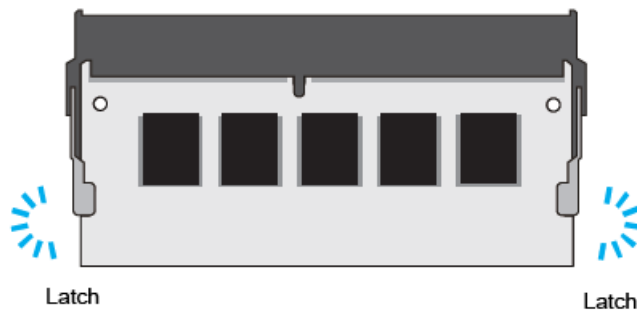
1. Remove the cover from the back of the P92U first, unscrew four screws of the stand mount and remove the stand.
2. Unscrew four screws of the back cover and remove it.

### Memory Module Installation

**Warning:** This motherboard does only support 1.2 V DDR4 SO-DIMM memory modules.

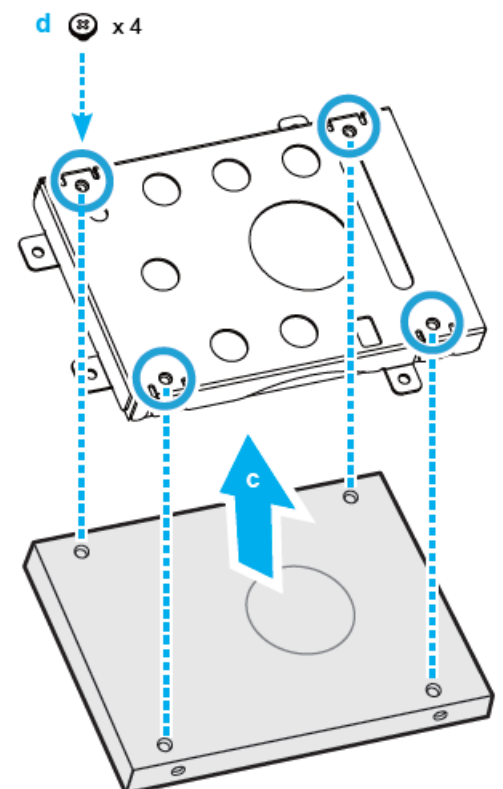
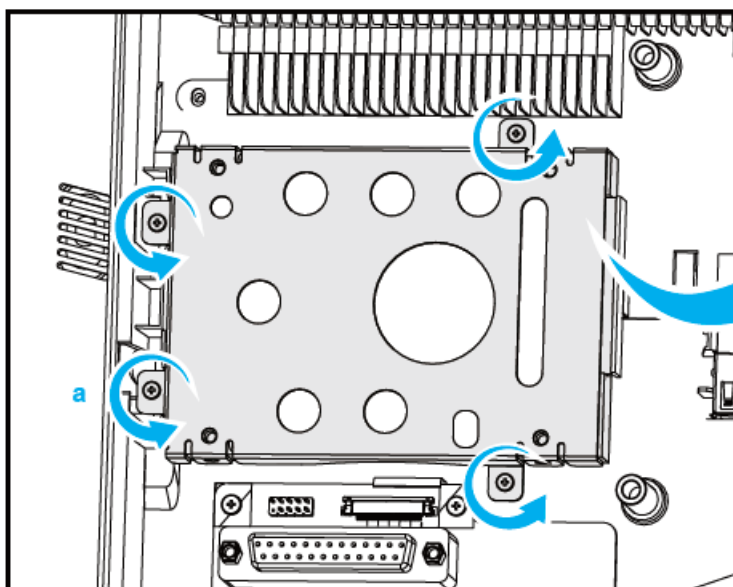


1. Locate the SO-DIMM slots on the motherboard and lift the mylar (Don't tear the mylar off).
2. Align the notch of the memory module with the one of the relevant memory slot.
3. Gently insert the module into the slot in a 45-degree angle.



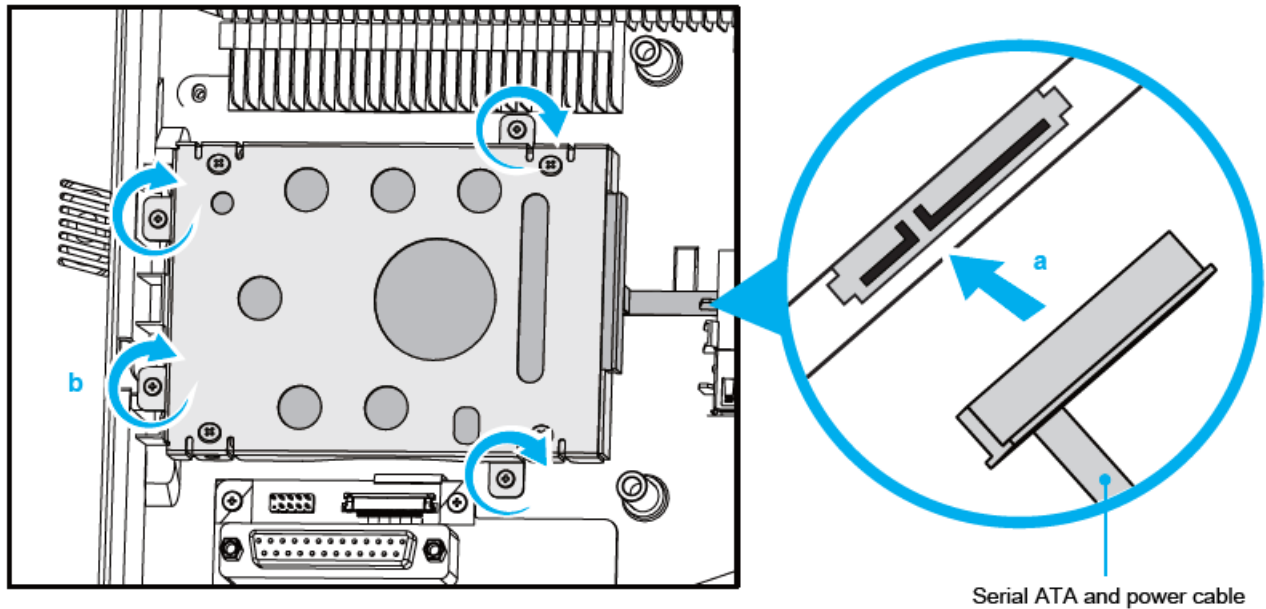
4. Carefully push down the memory module until it snaps into the locking mechanism and put back the mylar.
5. Repeat the above steps to install an additional memory module, if required.

## HDD or SSD Installation



1. Unscrew four screws of the bracket and remove it.

2. Mount the HDD or SSD into the bracket with four screws.

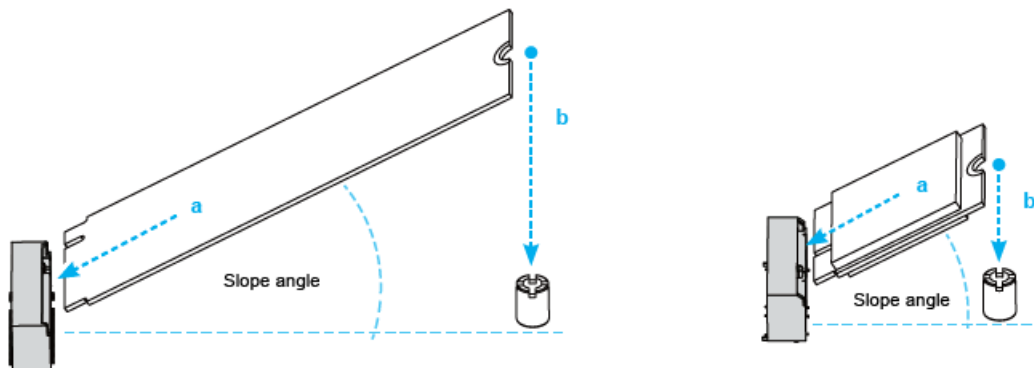


3. Connect the Serial ATA and power cable to the HDD or SSD.

4. Install the HDD or SSD & bracket in the chassis and tighten the HDD or SSD & bracket with four screws.

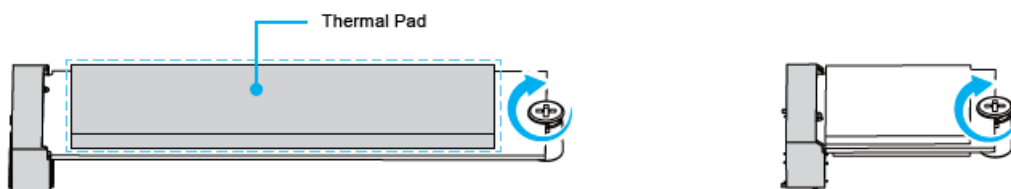
## M.2 Device Installation

1. Locate the M.2 key slots on the motherboard.



- M.2 2242/2260/2280 M key slot
- M.2 2230 E Key slot

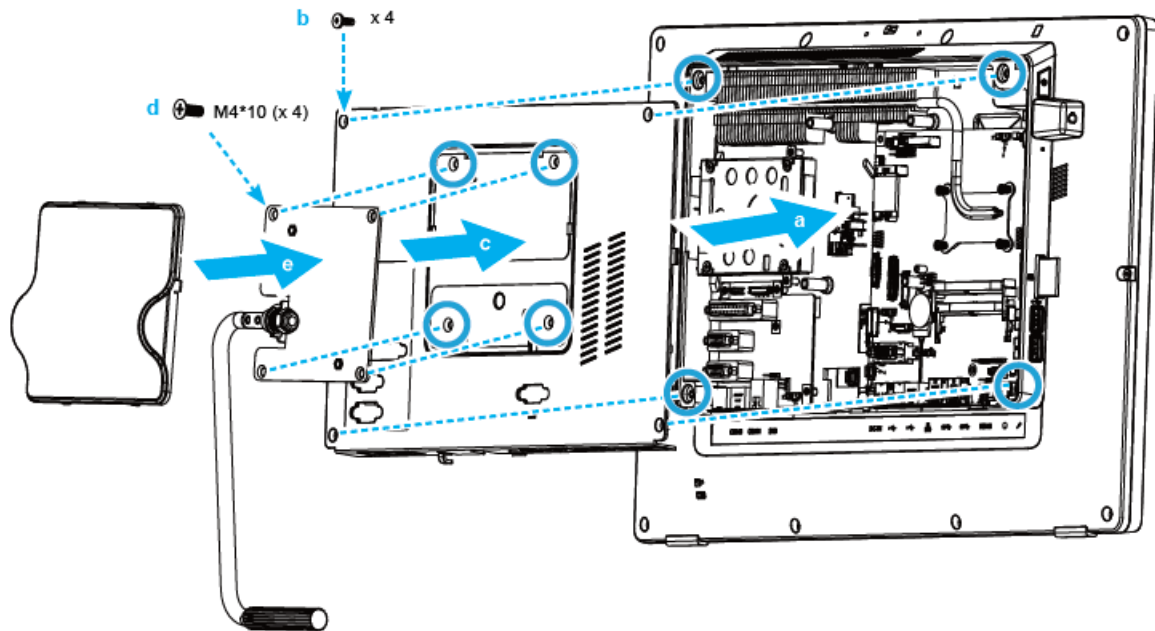
2. Install the M.2 device into the M.2 slot and secure with the screw.



- M.2 2242/2260/2280 M key slot
- M.2 2230 E Key slot

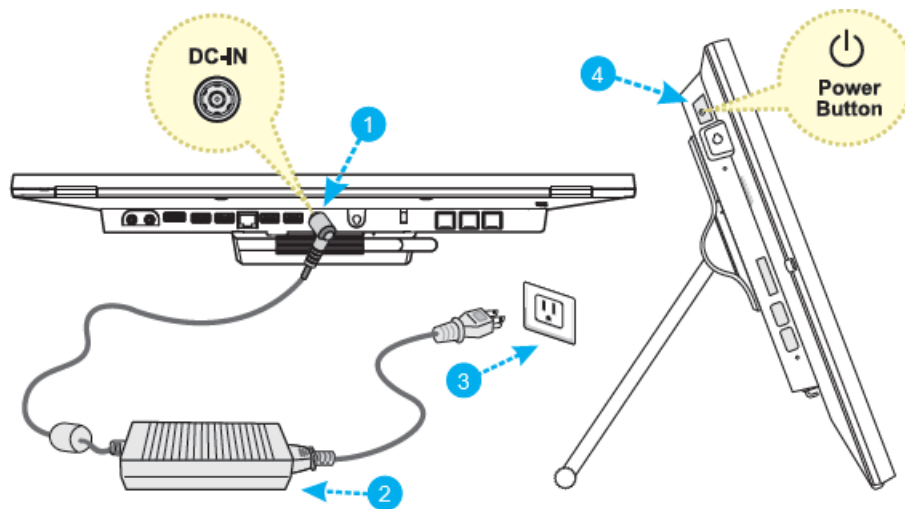
**Warning:** Pasting a thermal pad on the M.2 SSD can effectively reduce its temperature.

**Complete**



1. Replace the back cover. Refasten the stand and the back cover with eight screws.
2. Replace the cover, complete.

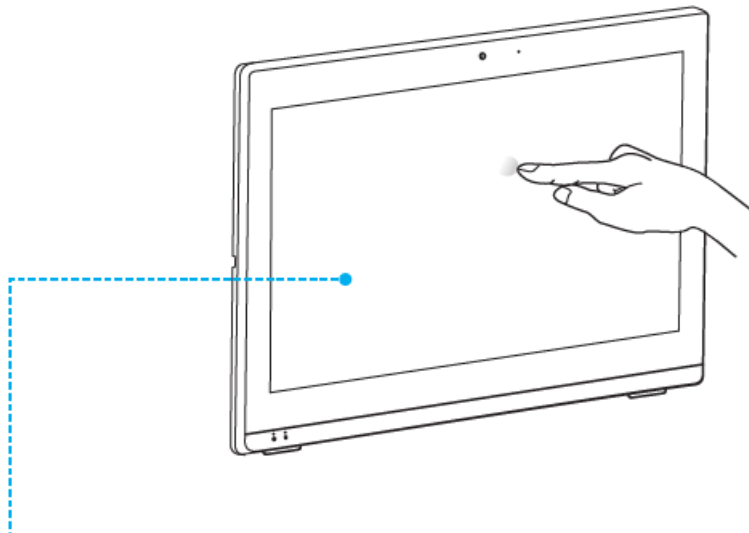
### Powering on the system



- Follow the steps (1-3) below to connect the AC adapter to the power jack (DC-IN).
- Press the (4) Power button to turn on the system.

**Warning:** Please press the “Del” key while booting to enter BIOS. Here, please load the optimised BIOS settings.

### How to use the Touch Panel

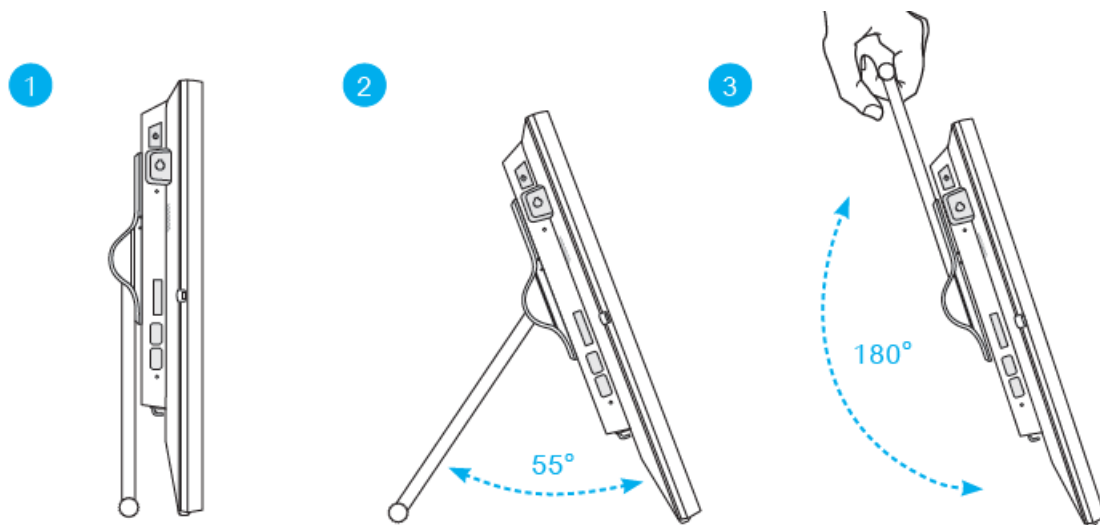


#### **Cleaning the screen**

Follow these guidelines for cleaning the outside and handling the screen of the computer:  
Turn off the system and disconnect all cables. Use a cleaning cloth which is soft, lint-free and a little damp to gently wipe the screen surface. Do not spray liquids directly onto the device.

### **Placing on a desk**

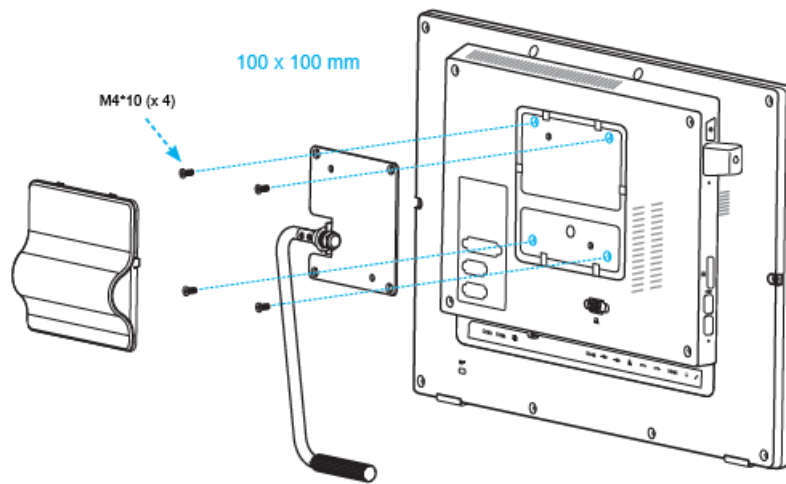
To place the machine on a desk and to carry it, do the following:



1. Place the P92U on a flat surface such as a table.
2. Pull the stand upwards to an angle of 55°.
3. To carry or move your P92U, fully extend the angle to 180°.

### **VESA mounting it to the wall**





If you are mounting your P92U to the wall, remove the cover from the back of the P92U first. Unscrew four screws of the stand mount and remove the stand. The VESA standard makes it easy to mount the P92U on to walls. Please refer to the user guide of the wall/arm mount kit you bought separately how to install it.

**Warning:** The P92U can be mounted to a wall using a VESA compatible 100 x 100 mm wall/arm bracket.

## Fcc Statement

## Safety Information



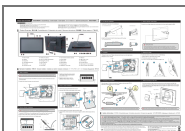
Incorrectly replacing the battery may damage this computer. Replace only with the same or equivalent as recommended by Shuttle. Dispose of used batteries according to the manufacturer's instructions.

This device complies with Part 15 of the FCC Rules. Operation is subject to the following two conditions:

1. this device may not cause harmful interference
2. this device must accept any interference received, including interference that may cause undesired operation.

This device meets the requirements for the EU conformity in accordance to the currently valid EU directives.

## Documents / Resources



[Shuttle P92U PC with Capacitive Touchscreen](#) [pdf] User Guide  
53R-P92U03-2002, P92U, P92U PC with Capacitive Touchscreen, PC with Capacitive Touchscreen, Capacitive Touchscreen, Touchscreen

## References

- [Shuttle Global - P92U](#)