



Shuttle P21WL01 Series Multi Touch Panel Computer User Guide

[Home](#) » [Shuttle](#) » Shuttle P21WL01 Series Multi Touch Panel Computer User Guide 

Contents

1 P15xxxx Series

- 1.1 Package Contents
- 1.2 Product Overview
- 1.3 Begin Installation
- 1.4 How to replace the M.2 SSD
- 1.5 Optional installation of WLAN antennas (appropriate chassis version required)
- 1.6 VESA mounting it to the wall (optional)
- 1.7 Using the Vertical Stand (optional)
- 1.8 Powering on the system
- 1.9 How to use the Touch Panel
- 1.10 Cleaning the screen

2 Documents / Resources

3 Related Posts

P15xxxx Series

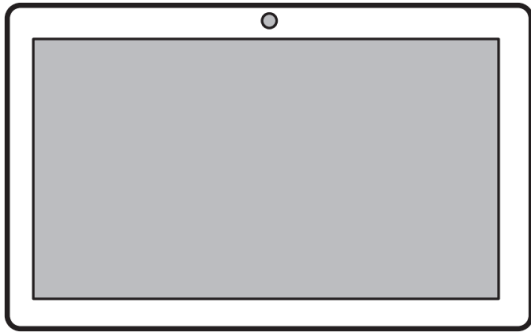
Quick Start Guide

Shuttle[®]
www.shuttle.com



53R-P15003-2001

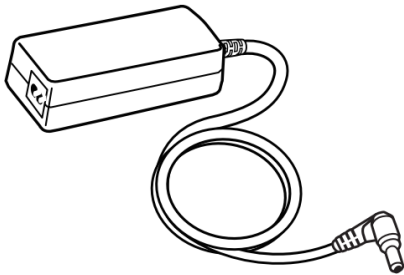
Package Contents



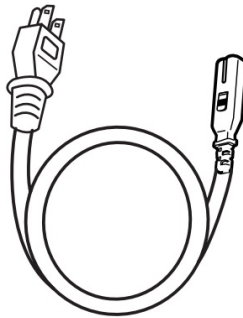
P15xxx (x 1)



Quick Start Guide (optional)



AC Adapter (x 1)



Power Cord (x 1)



1 pcs screw (M3 x 4L) to mount the M.2 device (optional)



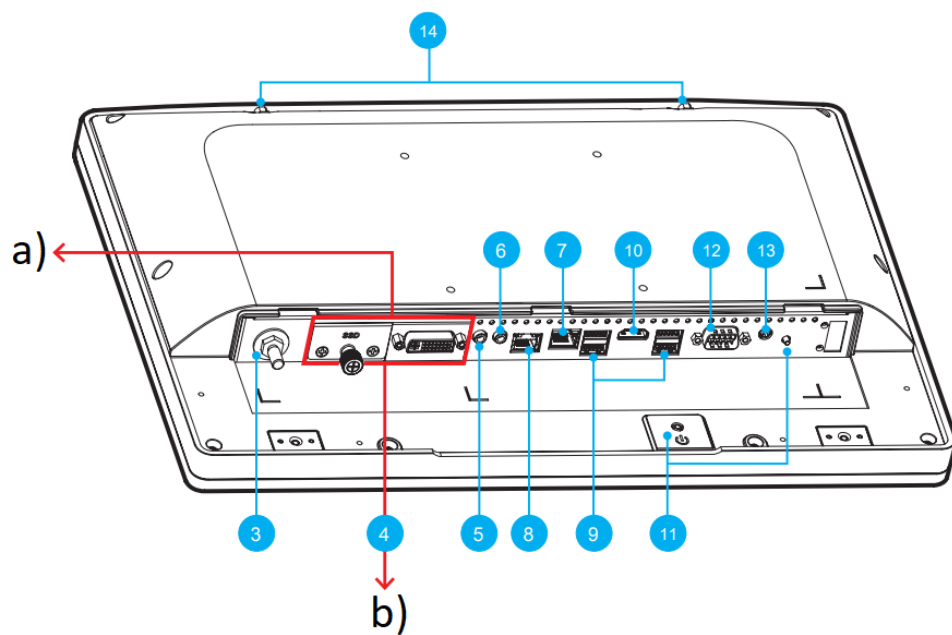
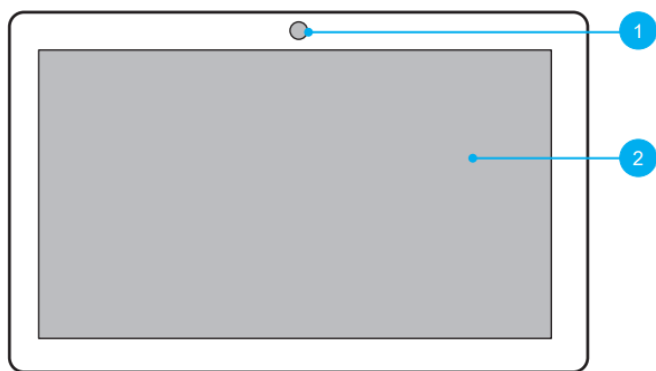
VESA screws 4 pcs (M4 x 6L) (optional)


Product Overview

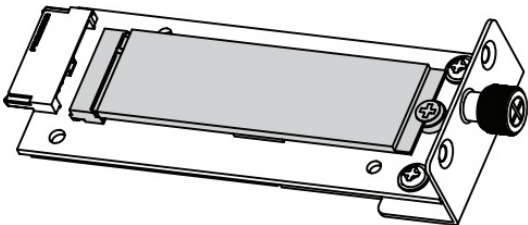
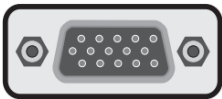


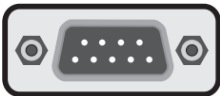


The product's colour and specifications may vary from the actually shipping product.

1. Webcam
2. 15" FHD LCD display
3. Potential equalization pin (POAG, optional)



- a)**  Optional I/O ports are available depending on the specs of the actually shipping product.
- b)**

Optional I/O Port	Occupied Sections		Specifications / Limitations
M.2 SSD	1		M.2 2280 M key slot
D-Sub (VGA) port	1		Max. resolution: D-Sub (VGA): 1920×1080 DVI-I (Single Link): 1920×1080
DVI-I port	1		
USB 2.0 Ports	1		USB2.0 x 4pcs
COM Port	1		RS232 only

5.Headphones / Line-out Jack

6. Microphone jack

7.8 LAN (RJ45) ports

(7) 1st LAN on MB, (8) 2nd LAN via optional daughter board (support wake on LAN)

9. USB 3.2 Gen1 Type-A ports

10. HDMI port

11. Power button

12. COM 1 port (RS232 only)

13. Power jack (DC-IN)

14. Connector for external antenna (optional)

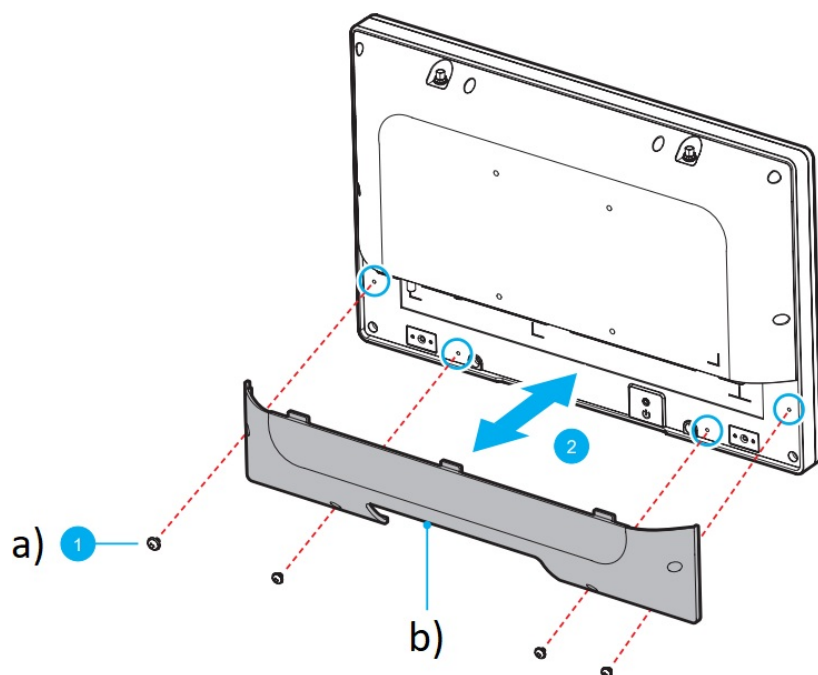
Begin Installation

Before using the rear I/O connectors, you need to remove the connector cover first.



For safety reasons, please ensure that the power cord is disconnected before opening the case.

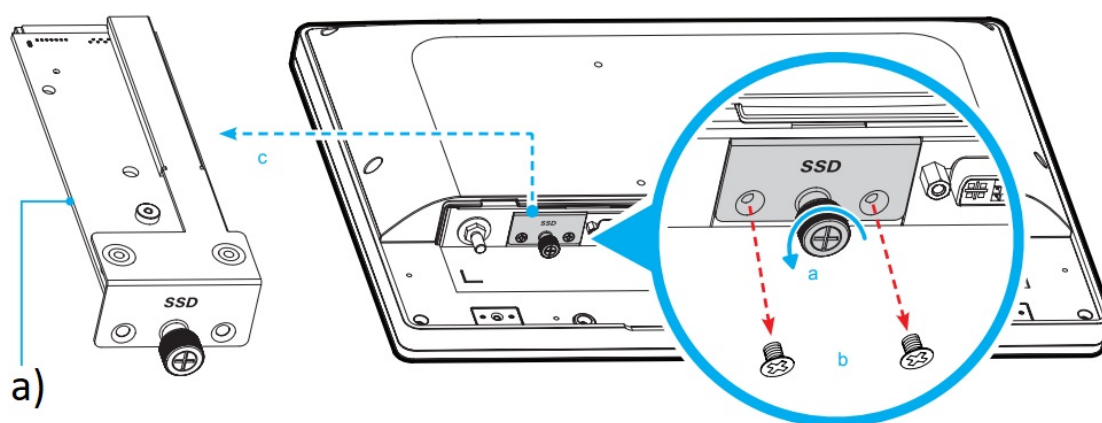
- Follow the steps 1 → 2 to remove the connector cover.
- Follow the steps 2 → 1 to install the connector cover.



- a) Four screws
b) Connector cover (optional)

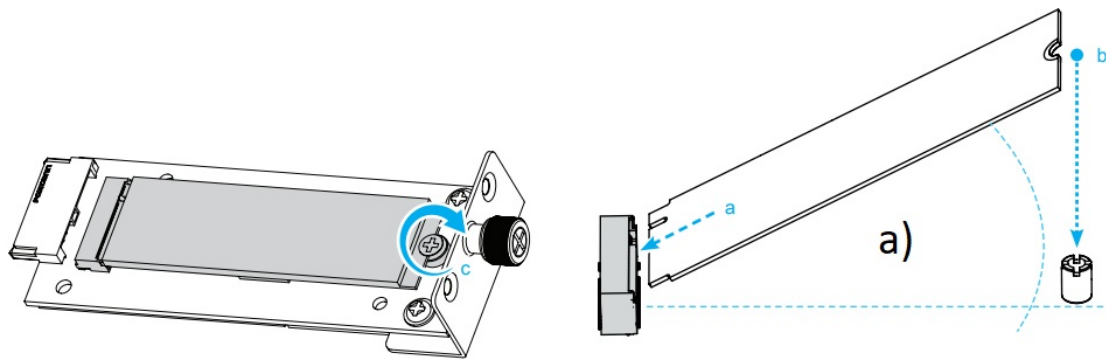
How to replace the M.2 SSD

1. If you want to replace the M.2 SSD, unscrew the thumbscrew and two screws of the bracket and remove it.



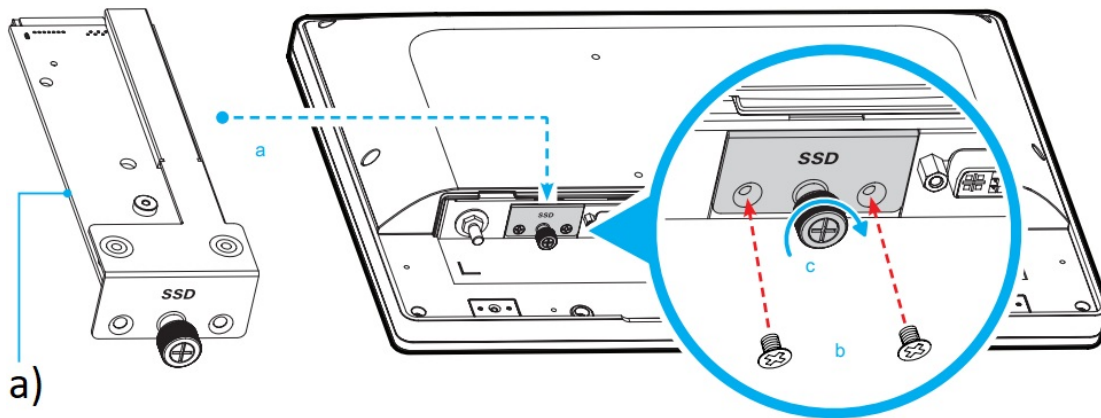
- a) Old SSD

2. Install the M.2 device into the M.2 slot and secure with the screw.



a) Slope angle

3. Slide the bracket back into the chassis and tighten the thumbscrew and two screws.



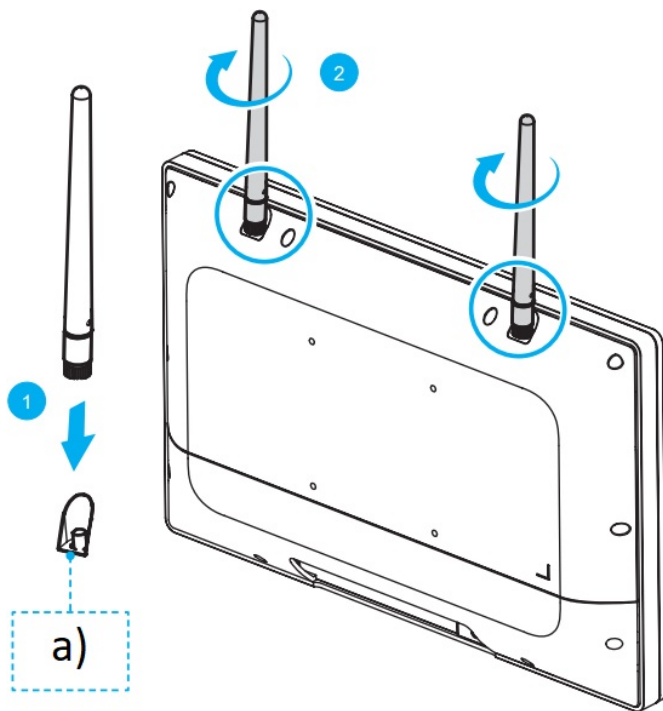
a) New SSD



The thumbscrews should be tightened with a tool after both initial installation and subsequent access to the panel PC.

Optional installation of WLAN antennas (appropriate chassis version required)

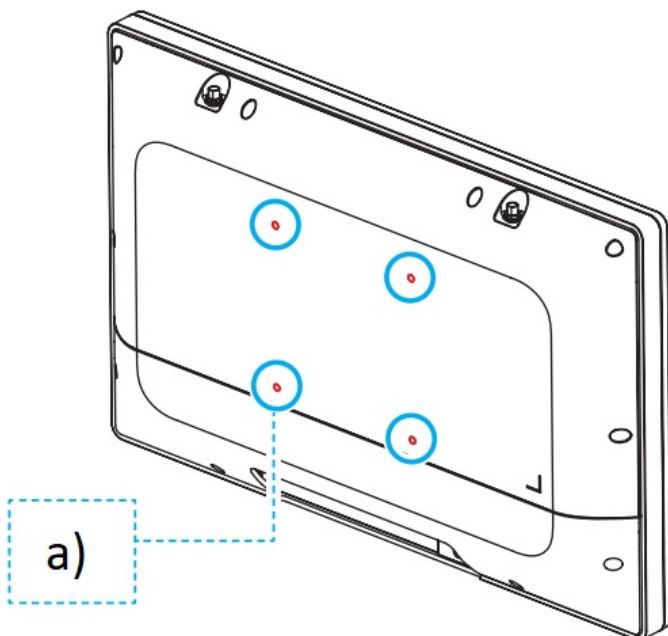
1. Take the two antennas out of the accessory box.
2. Screw the antennas on to the appropriate connectors on the back panel. Make sure the antennas are aligned vertically or horizontally to achieve the best possible signal reception.



a) Connector for WLAN antennas

VESA mounting it to the wall (optional)

- The standard VESA openings show where an arm / wall mount kit which is available separately can be attached.



a) Screws M4 x 6L * 4pcs



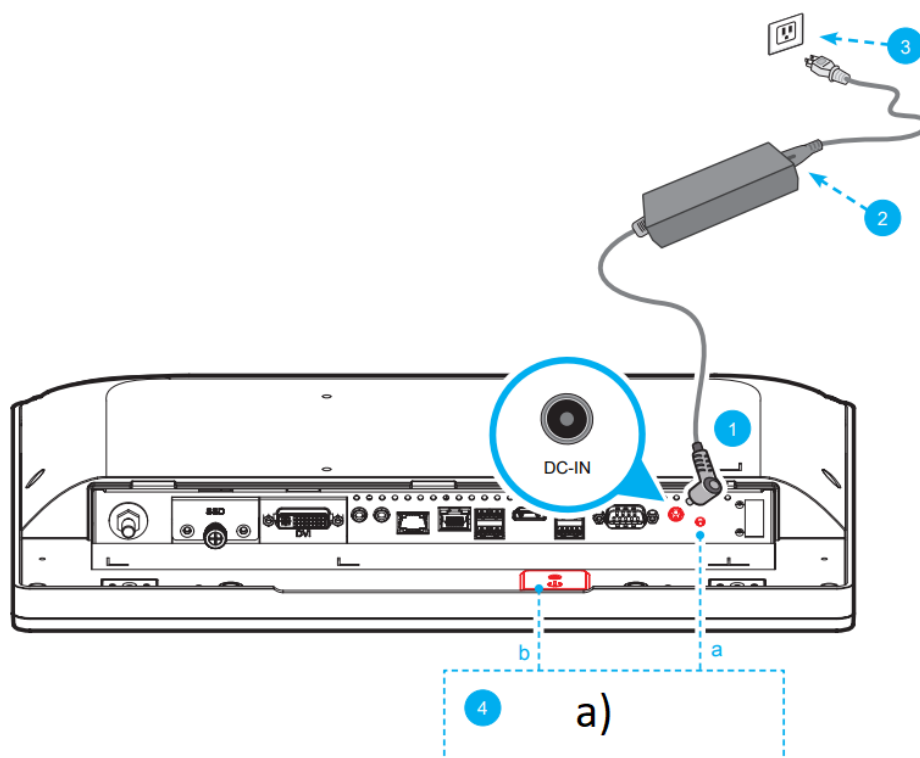
The Panel PC can be wall-mounted using a VESA compatible 100 mm x 100 mm wall / arm bracket. The maximum load capacity is 10 kg and mounting suitable in heights of ≤ 2 m only. The metal thickness of the VESA mount must be between 1.6 and 2.0 mm.

Using the Vertical Stand (optional)

-

Powering on the system

Press the power switch/button (4) to turn on the system.



a) Press the power button (a or b) to turn on the system.



Press and hold the power button (a or b) for 5 seconds to force shutdown.



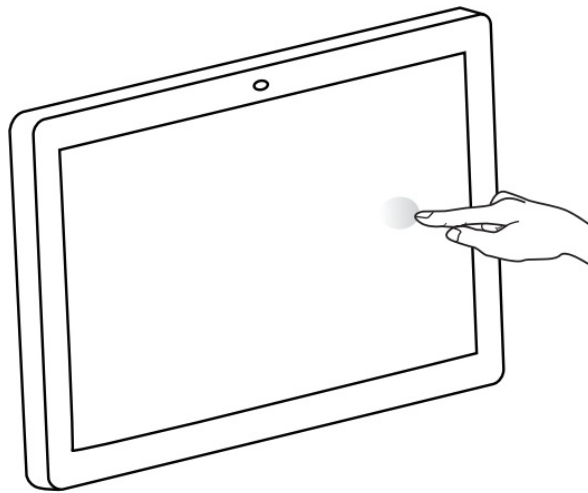
Do not use inferior extension cords as this may result in damage to your panel PC. The panel PC comes with its own AC adapter.

Do not use a different adapter to power the panel PC and other electrical devices.

How to use the Touch Panel

Touch panel brings digital life for an easy touch experience. Experience the ease of managing your digital life with a few touches. Your touch functions like a mouse device and all you need to interact with the touch panel.

- Touch = left-click on the mouse
- Touch and hold = right-click on the mouse



Cleaning the screen

Follow these rules for cleaning the outside and handling your screen on the panel PC :

1. Moisten a soft cloth with a little water or alcohol (max. 75%) to clean the screen.
Please never spray alcoholic cleaning agents directly onto the touchscreen.
2. Note that only the front side is IP65 protected. Be sure to avoid moisture on the other components.



CAUTION: Do not use or spray strong solvents such as benzine, thinner or any other solvent.



Should any accessories be required, please contact Shuttle or your relevant supplier.



The unit can be operated at an ambient temperature of max. 40°C (104°F). Do not expose it to temperatures below 0°C (32°F) or above 40°C (104°F).



Incorrectly replacing the battery may damage this computer. Replace only with the same or equivalent as

recommended by Shuttle. Dispose of used batteries according to the manufacturer's instructions.



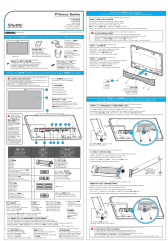
THIS PRODUCT CONTAINS A BUTTON BATTERY

If swallowed, a lithium button battery can cause severe or fatal injuries within 2 hours.

Keep batteries out of reach of children.

If you think batteries may have been swallowed or placed inside any part of the body, seek immediate medical attention.

Documents / Resources



[Shuttle P21WL01 Series Multi Touch Panel Computer](#) [pdf] User Guide
P21WL01, P15xxxx Series, 53R-P15003-2001, P21WL01 Series Multi Touch Panel Computer,
Multi Touch Panel Computer, Touch Panel Computer, Computer