



# Shuttle®

## NT10H Series Quick Guide

### Contents [ [hide](#) ]

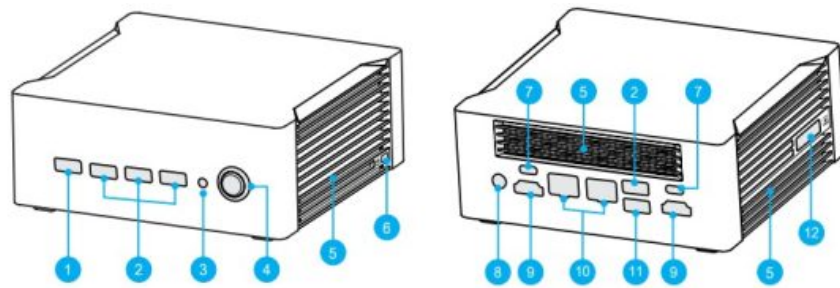
- [1 NT10H Series AI-Powered Performance Booster](#)
- [2 Product Overview](#)
- [3 Hardware Installation](#)
- [4 Safety Information](#)
- [5 Product Overview](#)
- [6 Hardware Installation](#)
- [7 Documents / Resources](#)
  - [7.1 References](#)

## NT10H Series AI-Powered Performance Booster

More information on this product can be found at: <https://bit.ly/NT10H-D>

### Product Overview

1.



USB 3.2 Gen2 Type-A port power rating USB 3.2: 0.9A (always on)

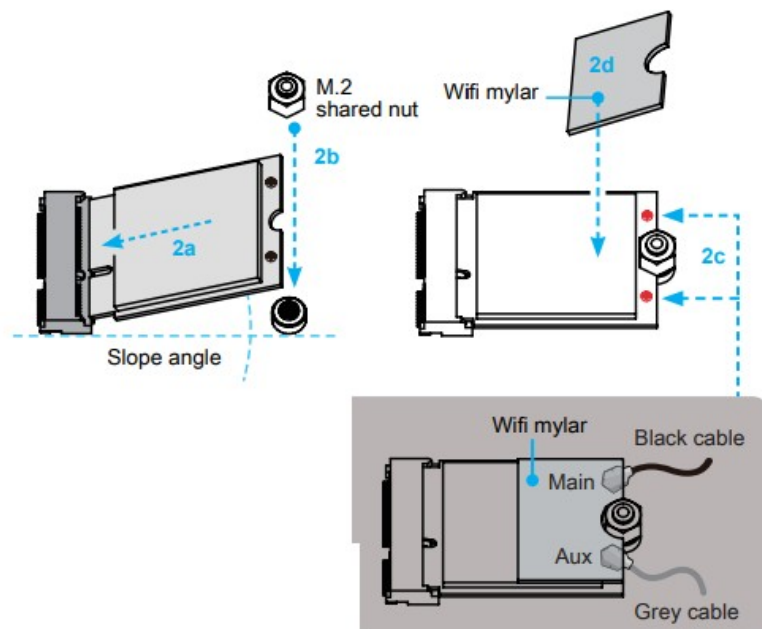
2. USB 3.2 Gen2 Type-A ports
3. Headphone / Mic in jack
4. Power button / Power LED
5. Ventilation Hole
6. Kensington® Lock Hole
7. USB 4.0 Type-C Ports (with DisplayPort / Power Delivery)
8. Power Jack (DC IN)
9. HDMI 2.0 Ports
10. LAN Ports
11. USB 2.0 Port
12. SD Card Reader

## Hardware Installation

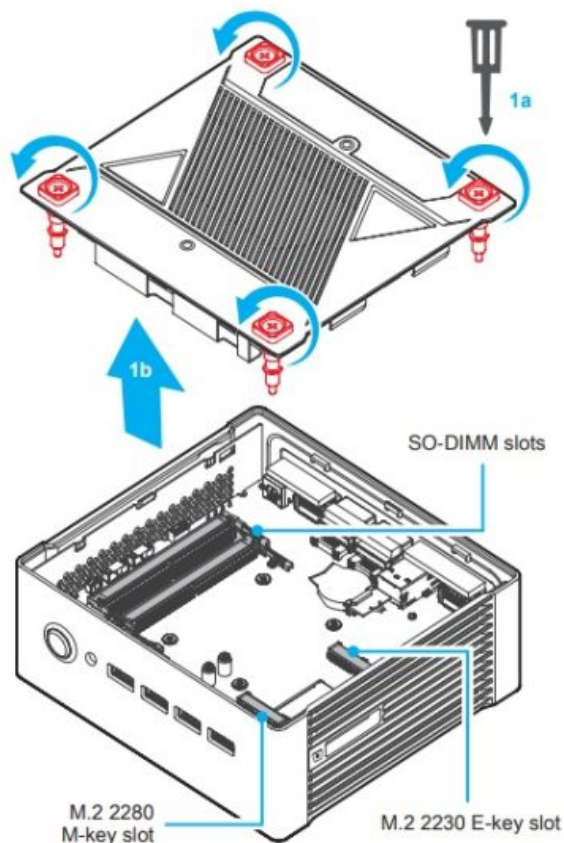
### A. M.2 Device, Memory Module Installation

**!** For safety reasons, please ensure that the power cord is disconnected before opening the case.

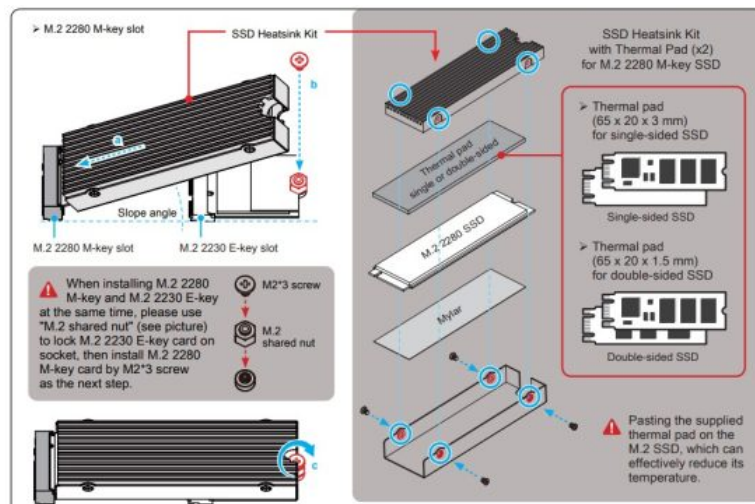
1. Unscrew four screws of the back cover and remove it.
2. Locate the M.2 key slots on the motherboard. Install the M.2 device into the M.2 slot and secure with the screw.
  - M.2 2230 E-key slot



**!** If the M.2 2230 E-key slot should be equipped with the wifi card, please connect the two antenna cables to (grey cable → Aux) and (black cable → Main) on the wifi card and affix them with the wifi mylar, as shown.



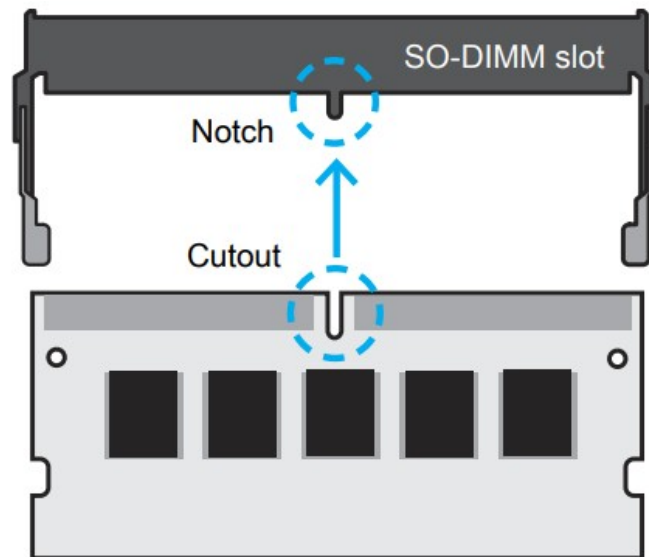
**i** The product's colour and specifications may vary from the actually shipped product.



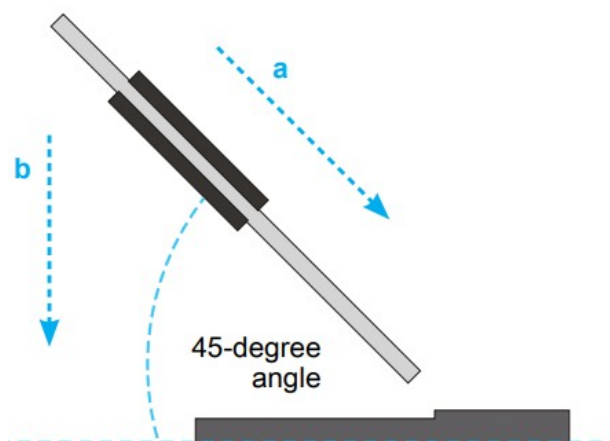
3. Locate the SO-DIMM slots on the motherboard.

**!** This motherboard does only support 1.1 V DDR5 SO-DIMM memory modules.

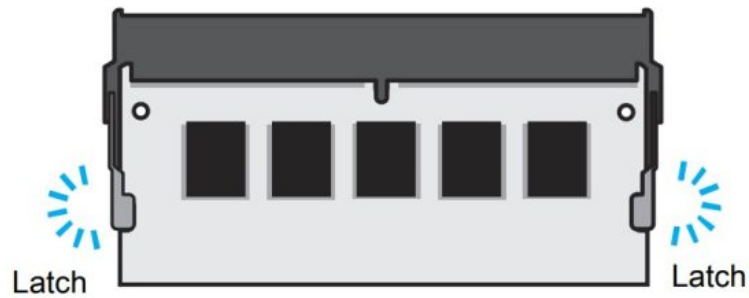
4. Align the notch of the memory module with the one of the relevant memory slot.



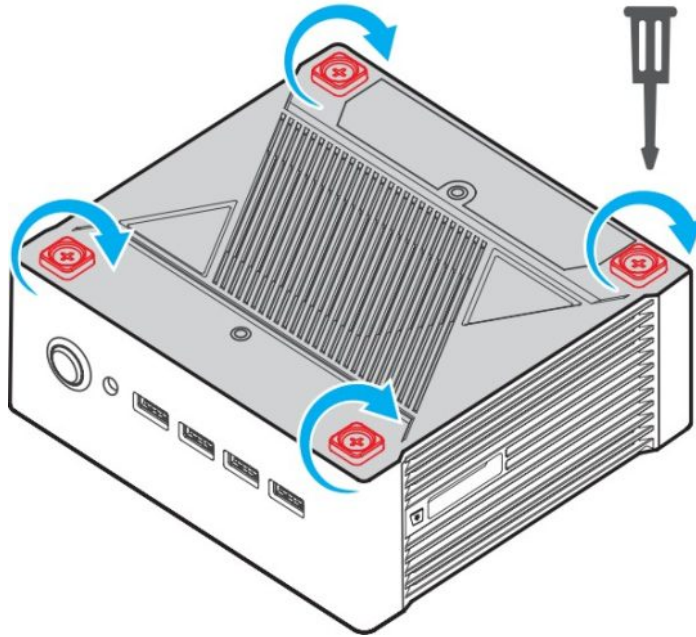
5. Gently insert the module into the slot in a 45-degree angle.



6. Carefully push down the memory module until it snaps into the locking mechanism.

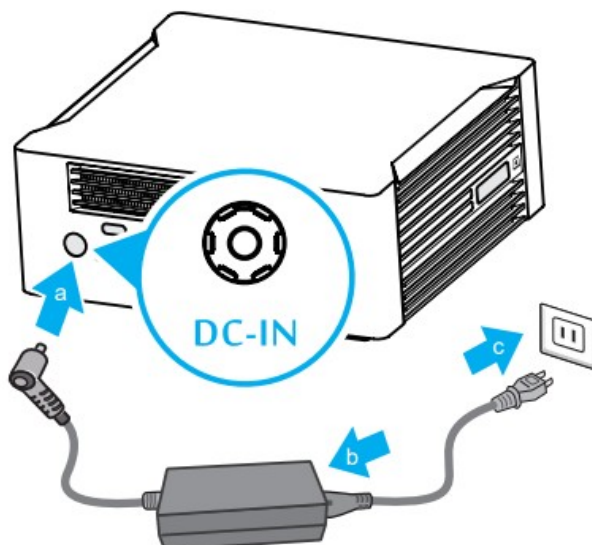


7. Repeat the above steps to install an additional memory module, if required.
8. Please replace and affix the case cover with four screws.



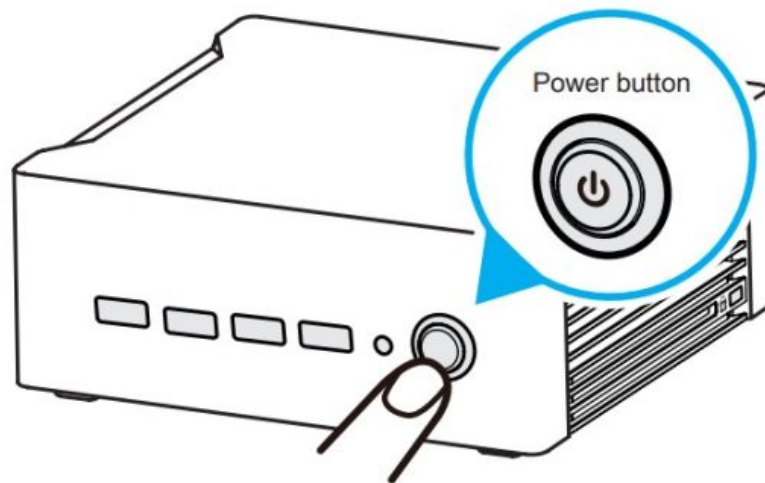
## B. Connecting to Power

1. Follow the steps (a-c) below to connect the AC adapter to the power jack (DC-IN).
2. Press the power button to turn on the system.



**!** Do not use inferior extension cords as this may result in damage to your NT10H. The NT10H comes with its own AC adapter. Do not use a different adapter to power the

NT10H and other electrical devices.

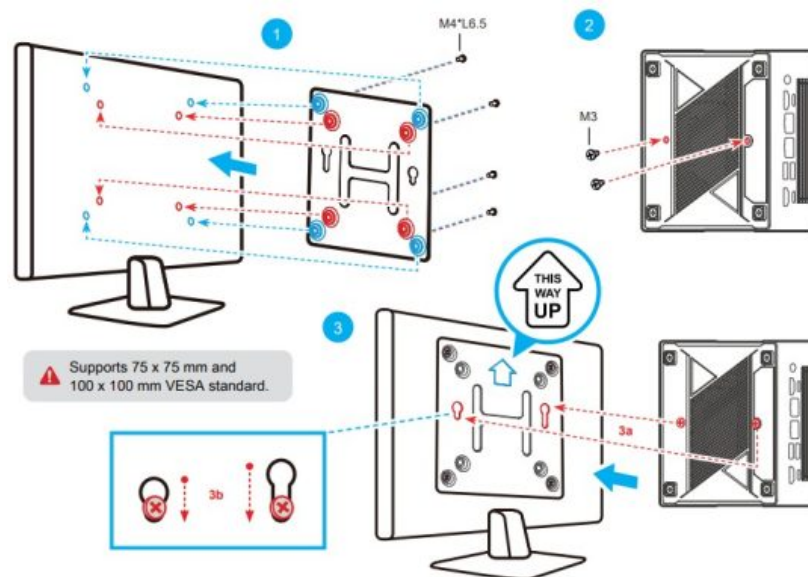


**!** To put your NT10H on Sleep mode, press the “Power button” once. If the NT10H is frozen or slow to respond, press and hold the “Power button” at least for 10 seconds to force it shutdown.

**!** Please press the “Del” key while booting to enter BIOS. Here, please load the optimised BIOS settings.

## Installation of VESA Mount

➤ Follow the steps 1-3 to install the VESA mount.



## Safety Information

**!** Incorrectly replacing the battery may damage this computer. Replace only with the same or equivalent as recommended by Shuttle. Dispose of used batteries in accordance with the laws of your country.

This device complies with Part 15 of the FCC Rules. Operation is subject to the following



two conditions:

(1) this device may not cause harmful interference, and (2) this device must accept any interference received, including interference that may cause undesired operation.

CAN ICES-003(B) / NMB-003(B)

CE This device meets the requirements for the EU conformity in accordance to the currently valid EU directives.



All bundled parts, power cord included, shall not be used without this product.



\* The equipment was evaluated for use in a maximum air ambient temperature of 40 °C.



## WARNING

### THIS PRODUCT CONTAINS A BUTTON BATTERY

If swallowed, a lithium button battery can cause severe or fatal injuries within 2 hours.

Keep batteries out of reach of children.

If you think batteries may have been swallowed or placed inside any part of the body, seek immediate medical attention.



## WARNING

The product contains non-replaceable batteries

The statement “remove and immediately recycle or dispose of used batteries according to local regulations and keep away from children. Do NOT dispose of batteries in household trash or incinerate.”

(a) Remove and immediately recycle or dispose of used batteries according to local regulations and keep away from children.

Do NOT dispose of batteries in household trash or incinerate.

(b) Even used batteries may cause severe injury or death.

(c) Call a local poison control center for treatment information.

(d) Indicating the compatible battery type CR2032.

(e) Indicating the nominal battery voltage.

(f) Non-rechargeable batteries are not to be recharged.

(g) Do not force discharge, recharge, disassemble, heat above (manufacturer’s specified temperature rating) or incinerate.

Doing so may result in injury due to venting, leakage or explosion resulting in chemical burns.

 The unit can be operated at an ambient temperature of max. 40°C (104°F).


Do not expose it to temperatures below 0°C (32°F) or above 40°C (104°F).

## Product Overview

1. USB 3.2 Gen2 Type-A Port Power rating USB 3.2: 0.9A (always on)
2. USB 3.2 Gen2 Type-A Ports
3. Headphones / MIC-in jack
4. Power button / Power LED
5. Ventilation Hole
6. Kensington® Lock Hole
7. USB 4.0 Type-C Ports (with DisplayPort / Power Delivery)
8. Power Jack (DC IN)
9. HDMI 2.0 Ports
10. LAN Ports
11. USB 2.0 Port
12. SD Card Reader

## Hardware Installation

### A. M.2 Device, Memory Module Installation

 For safety reasons, please ensure that the power cord is disconnected before opening the case.

1. Unscrew four screws of the back cover and remove it.
2. Locate the M.2 key slots on the motherboard. Install the M.2 device into the M.2 slot and secure with the screw.



The product's colour and specifications may vary from the actually shipped product.

3. Locate the SO-DIMM slots on the motherboard.



This motherboard does only support 1.1 V DDR5 SO-DIMM memory modules.

4. Align the notch of the memory module with the one of the relevant memory slot.



5. Gently insert the module into the slot in a 45-degree angle.
6. Carefully push down the memory module until it snaps into the locking mechanism.
7. Repeat the above steps to install an additional memory module, if required.
8. Please replace and affix the case cover with four screws.

## B. Connecting to Power

**!** Do not use inferior extension cords as this may result in damage to your NT10H. The NT10H comes with its own AC adapter. Do not use a different adapter to power the NT10H and other electrical devices.

**!** If the M.2 2230 E-key slot should be equipped with the wifi card, please connect the two antenna cables to (grey cable → Aux) and (black cable → Main) on the wifi card and affix them with the wifi mylar, as shown.

**!** When installing M.2 2280 M-key and M.2 2230 E-key at the same time, please use “M.2 shared nut” (see picture) to lock M.2 2230 E-key card on socket, then install M.2 2280 M-key card by M2\*3 screw as the next step.

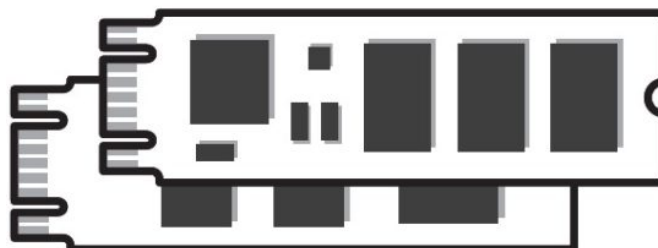
SSD Heatsink Kit with Thermal Pad (x2) for M.2 2280 M-key SSD

➤ Thermal pad (65 x 20 x 3 mm) for single-sided SSD



Single-sided SSD

➤ Thermal pad (65 x 20 x 1.5 mm) for double-sided SSD



Double-sided SSD

**!** Pasting the supplied thermal pad on the M.2 SSD, which can effectively reduce its temperature.

1. Follow the steps (a-c) below to connect the AC adapter to the power jack (DC-IN).
2. Press the power button to turn on the system.

**!** To put your NT10H on Sleep mode, press the “Power button” once.

If the NT10H is frozen or slow to respond, press and hold the “Power button” at least for 10 seconds to force it shutdown.

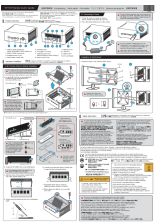
**!** Please press the “Del” key while booting to enter BIOS. Here, please load the optimised BIOS settings.

### Installation of VESA Mount

- Follow the steps 1-3 to install the VESA mount.
- Supports 75x75mm and 100x100mm VESA standard.

# Shuttle®

## Documents / Resources

	<a href="#">Shuttle NT10H Series AI-Powered Performance Booster [pdf]</a> User Guide 53R-DH6703-2001, NT10H Series AI-Powered Performance Booster, NT 10H Series, AI-Powered Performance Booster, Performance Booster, Boo ster
---	---

## References

- [User Manual](#)

Shuttle

53R-DH6703-2001, AI-Powered Performance Booster, Booster, NT10H Series, NT10H Series AI-Powered Performance Booster, Performance Booster, Shuttle

—Previous Post

**Shuttle NT10H Semi Ruggedized Mini Pc User Manual**

Next Post—

**Shuttle P55U 15.6 inch All in One PC User Manual**

---

## Leave a comment

Your email address will not be published. Required fields are marked \*

Comment \*

Name

Email

Website

☐ Save my name, email, and website in this browser for the next time I comment.

**Post Comment**

Manuals+, Privacy Policy | @manuals.plus | YouTube

This website is an independent publication and is neither affiliated with nor endorsed by any of the trademark owners. The "Bluetooth®" word mark and logos are registered trademarks owned by Bluetooth SIG, Inc. The "Wi-Fi®" word mark and logos are registered trademarks owned by the Wi-Fi Alliance. Any use of these marks on this website does not imply any affiliation with or endorsement.