



# Shuttle NS02A XPC Nano Android-based Fanless User Guide

[Home](#) » [Shuttle](#) » Shuttle NS02A XPC Nano Android-based Fanless User Guide 

## Contents

- [1 Shuttle NS02A XPC Nano Android-based Fanless](#)
- [2 Product Overview](#)
- [3 Package Contents](#)
- [4 Installation of VESA Mount](#)
- [5 Connecting to Power](#)
- [6 Begin Installation](#)
- [7 Component Installation](#)
- [8 Documents / Resources](#)
- [9 Related Posts](#)

*Shuttle®*

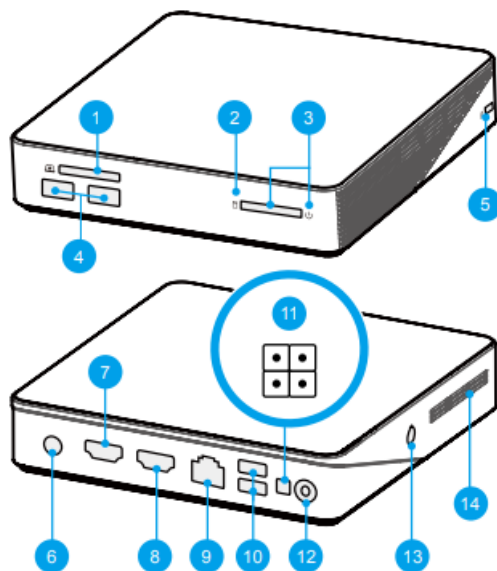
## Shuttle NS02A XPC Nano Android-based Fanless



### IMPORTANT:

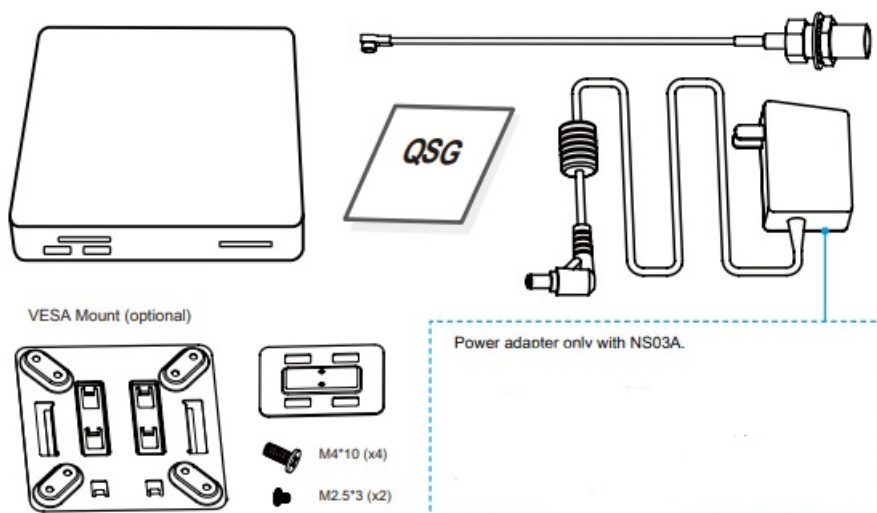
The unit can be operated at an ambient temperature of max. 40°C (104°F). Do not expose it to temperatures below 0°C (32°F) or above 40°C (104°F).

## Product Overview



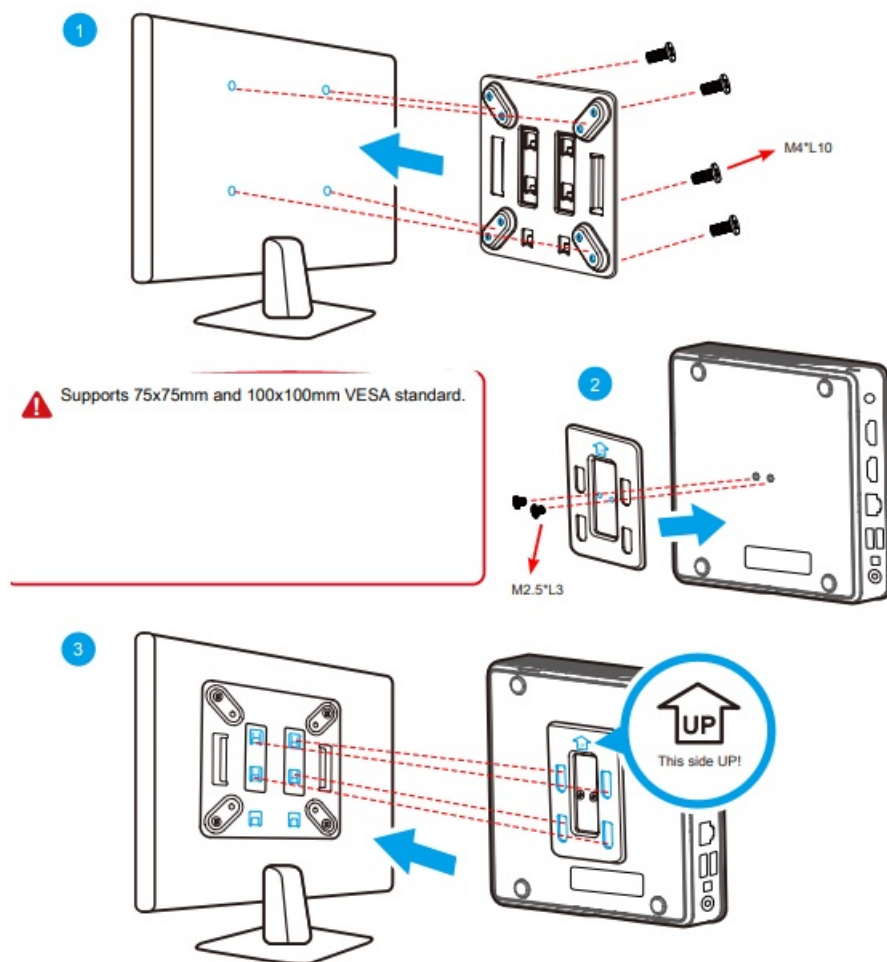
1. SD Card Reader
2. HDD LED
3. Power Button / Status LED
4. USB 3.2 Gen1 Type-A ports
5. Kensington® Lock Hole
6. Power Jack (DC IN)
7. HDMI 1.4 Port
8. HDMI 2.0 Port
9. NS03A: LAN Port
10. USB 2.0 ports
11. Connector for external power button
  - Recovery Mode
12. Headphones / Line-out Jack
13. Perforation for optional WLAN (optional)
14. Thermal Vent

## Package Contents

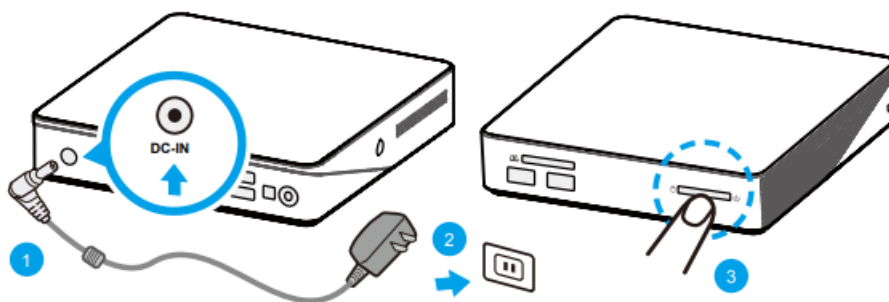


## Installation of VESA Mount

- Follow steps 1-3 to install the VESA mount.
- Siga los pasos 1-3 para instalar el soporte VESA.



## Connecting to Power



### WARNING:

Incorrectly replacing the battery may damage this computer. Replace only with the same or equivalent as recommended by Shuttle. Dispose of used batteries according to the manufacturer's instructions.

This device complies with Part 15 of the FCC Rules. Operation is subject to the following two conditions: (1) this device may not cause harmful interference, and (2) this device must accept any interference received, including interference that may cause undesired operation.

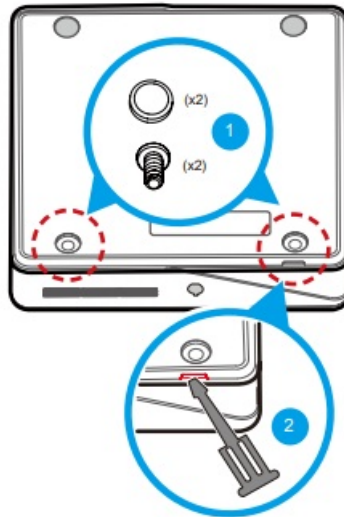
This device meets the requirements for EU conformity in accordance to the currently valid EU directives.

## Begin Installation

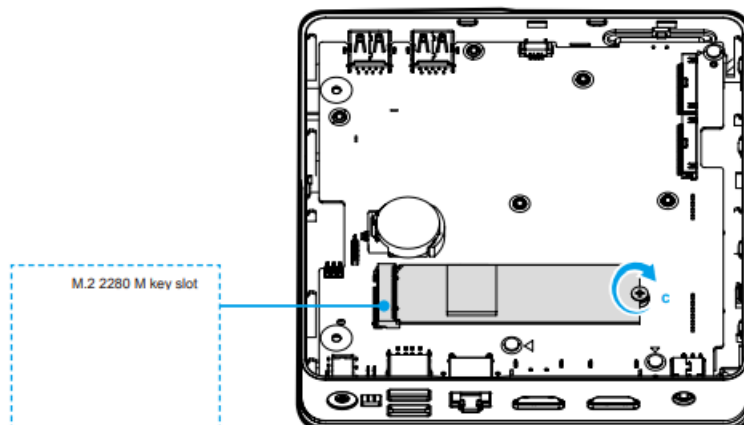
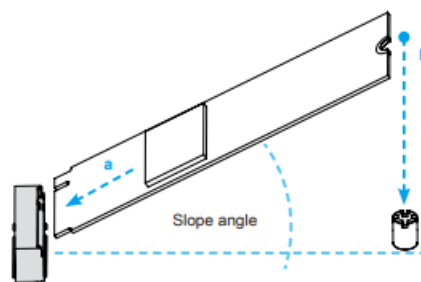
### WARNING:

For safety reasons, please ensure that the power cord is disconnected before opening the case.

- Unscrew two screws of the back cover and remove it.



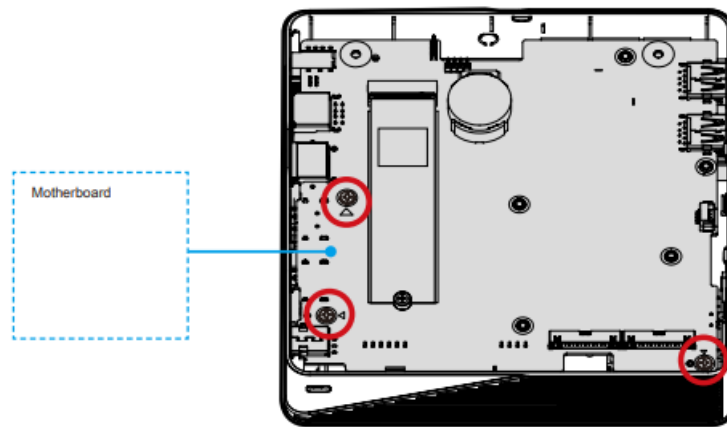
## Component Installation



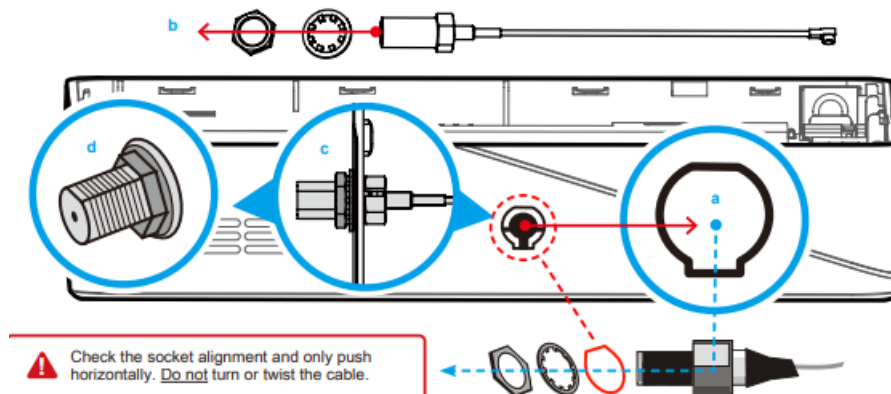
1. Locate the M.2 key slots on the motherboard.
2. Install the M.2 device into the M.2 slot and secure with the screw.

**WARNING:** For installation of a WLAN antenna, start with step 3, otherwise proceed to step 7.

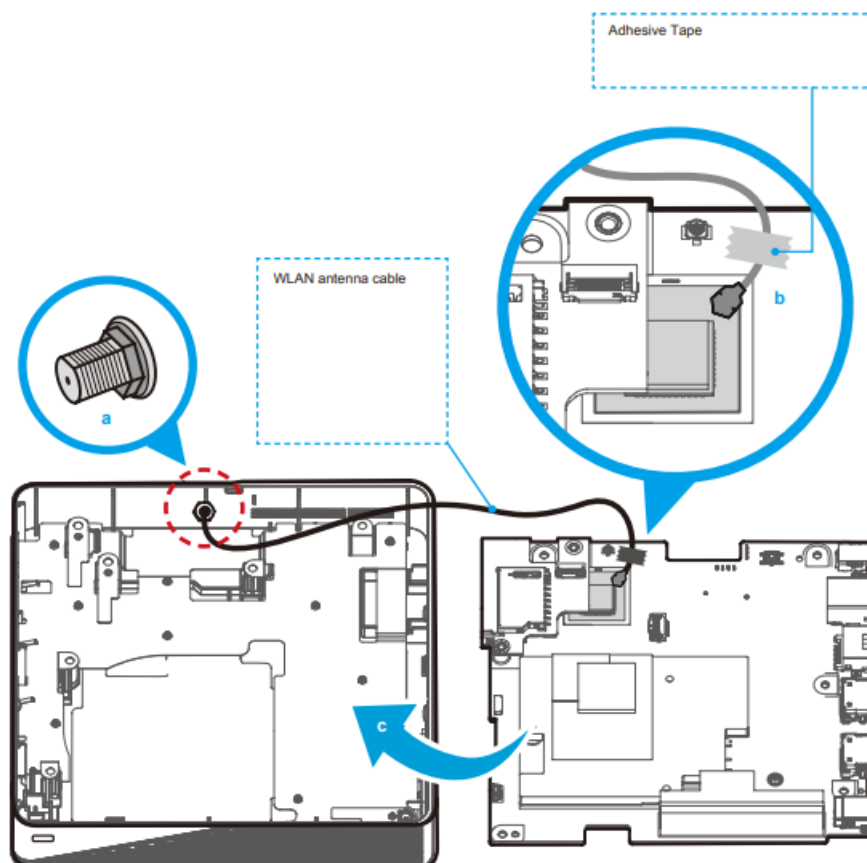
3. Unfasten three screws of the motherboard and put it aside.



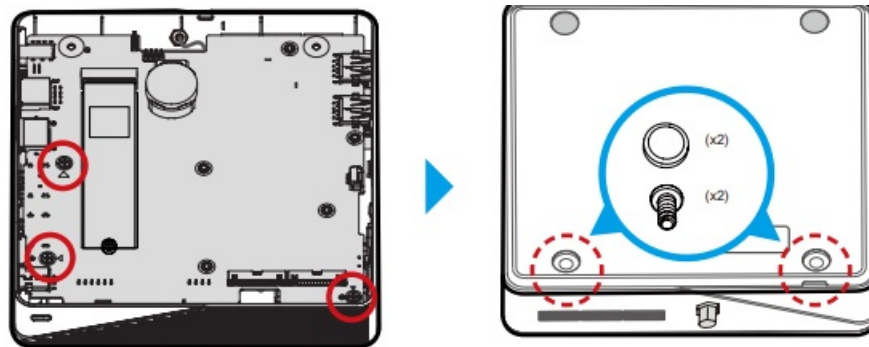
4. Clear the opening for the antenna at the side of the chassis (see picture). Take the antenna cable and remove the locks. Lead the cable through the mentioned opening and use the locks to affix the antenna from the outside.



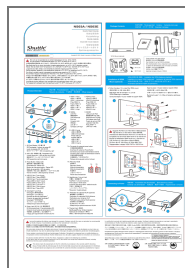
5. Please remove the connector of the internal antenna. To avoid a short circuit, please ensure that insulation tape is wrapped around the antenna connector before putting it aside. Now connect the WLAN antenna cable to the I-PEX connector and affix with adhesive tape, as shown.



6. As shown, replace the motherboard and refasten three screws.
7. Replace the cover and refasten two screws.



## Documents / Resources



[Shuttle NS02A XPC Nano Android-based Fanless](#) [pdf] User Guide

NS03, S8CNS03, NS03A, NS03E, NS02A XPC Nano Android-based Fanless, NS02A, XPC Nano Android-based Fanless