



Shuttle NS02A V2 0.5-Litre Fanless PC with Android Supports HDMI 2.0 User Guide

[Home](#) » [Shuttle](#) » Shuttle NS02A V2 0.5-Litre Fanless PC with Android Supports HDMI 2.0 User Guide 

Contents

- [1 Shuttle NS02A V2 0.5-Litre Fanless PC with Android Supports HDMI 2.0](#)
- [2 Product Overview](#)
- [3 Package Contents](#)
- [4 Installation of VESA Mount \(optional\)](#)
- [5 Connecting to Power](#)
- [6 Begin Installation](#)
- [7 Component Installation](#)
- [8 Documents / Resources](#)
- [9 Related Posts](#)

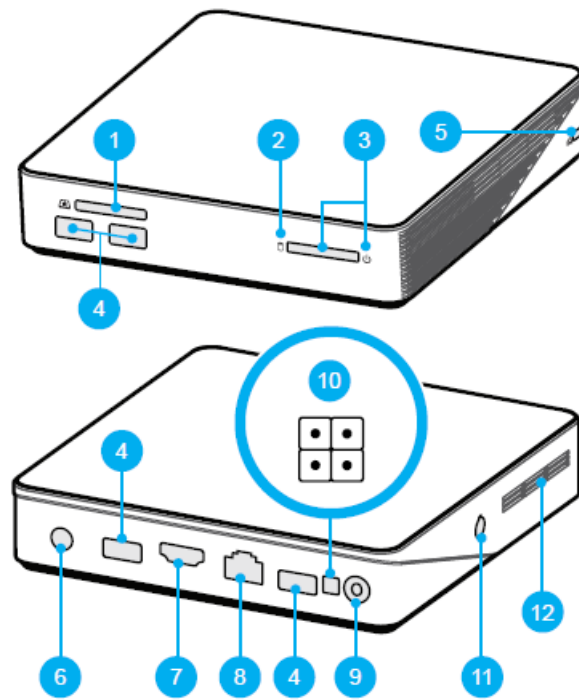
Shuttle

Shuttle NS02A V2 0.5-Litre Fanless PC with Android Supports HDMI 2.0



The unit can be operated at an ambient temperature of max. 40°C (104°F).
Do not expose it to temperatures below 0°C (32°F) or above 40°C (104°F).

Product Overview

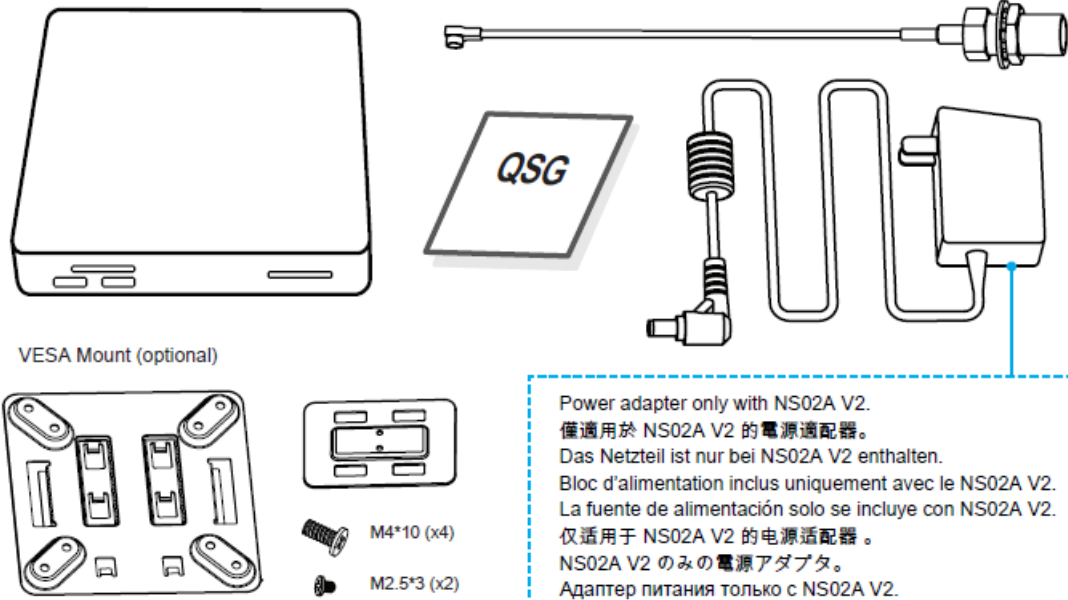


1. SD Card Reader
2. HDD LED
3. Power Button / Status LED
4. USB 2.0 (x4)

When the system is shut down in AC mode, the power rating of the USB 2.0 ports is 500mA. (Do not connect other storage devices via a USB hub.)

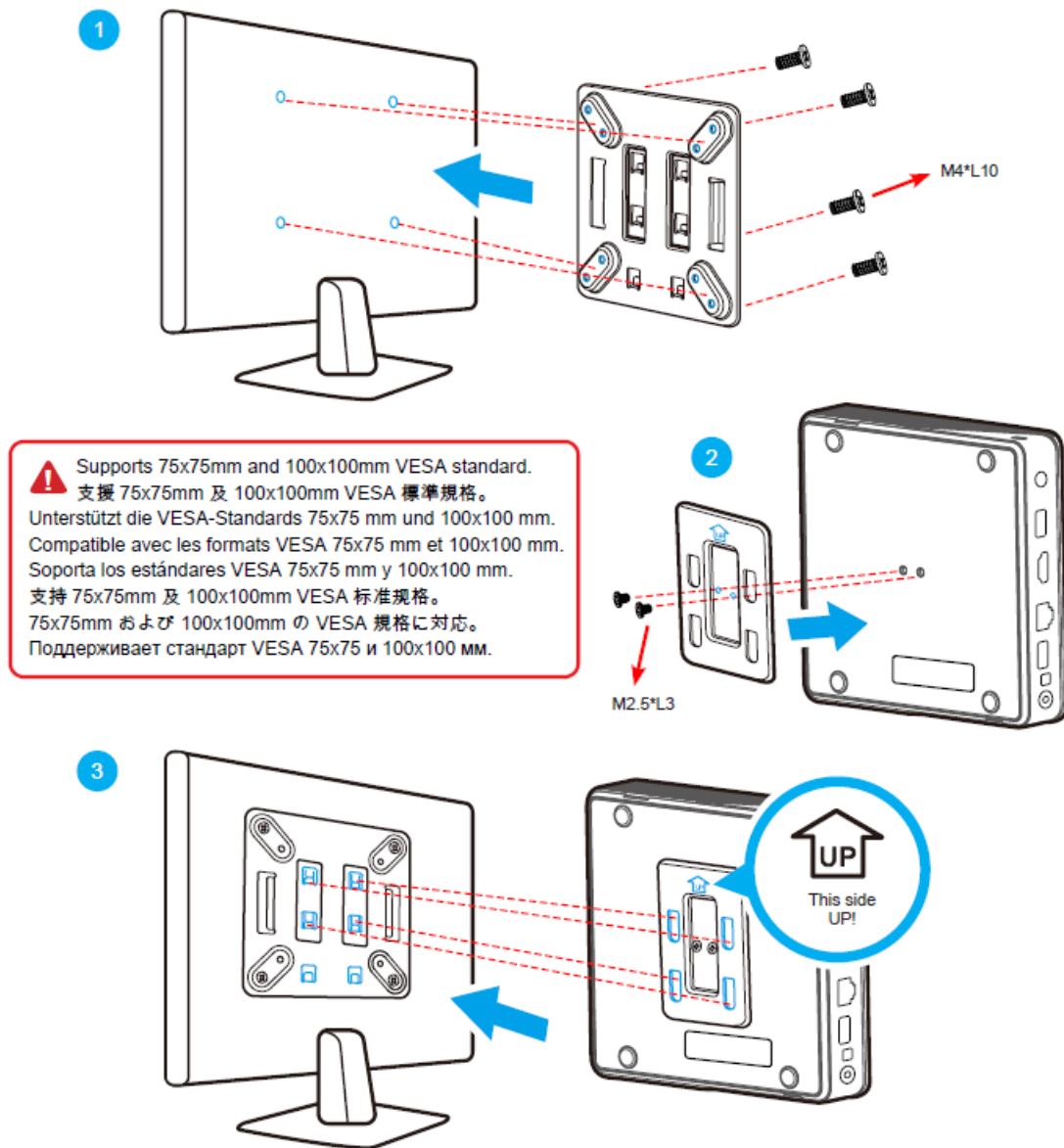
5. Kensington® Lock Hole
6. Power Jack (DC IN) \ DC
7. HDMI Port \ HDMI
8. **NS02A V2:**
LAN Port
- NS02E V2:**
LAN port with PoE
9. Headphones / Line-out Jack
10. Connector for the external power button
Recovery Mode
11. Perforation for optional WLAN (optional)
12. Thermal Vent

Package Contents

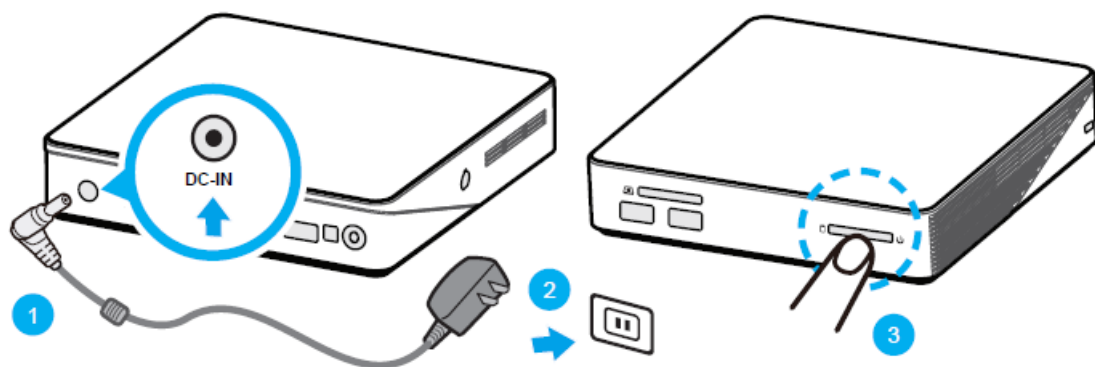


Installation of VESA Mount (optional)

- Follow steps 1-3 to install the VESA mount.



Connecting to Power



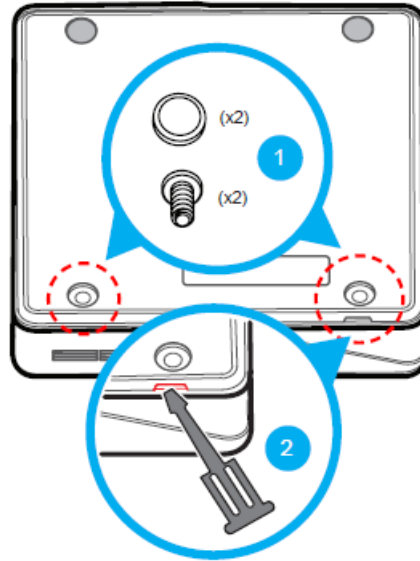
Incorrectly replacing the battery may damage this computer. Replace only with the same or equivalent as recommended by Shuttle. Dispose of used batteries according to the manufacturer's instructions.

This device complies with Part 15 of the FCC Rules. Operation is subject to the following two conditions:
 (1) this device may not cause harmful interference, and (2) this device must accept any interference received, including interference that may cause undesired operation.

This device meets the requirements for the EU conformity in accordance to the currently
 All bundled parts, power cord included, shall not be used without this product.

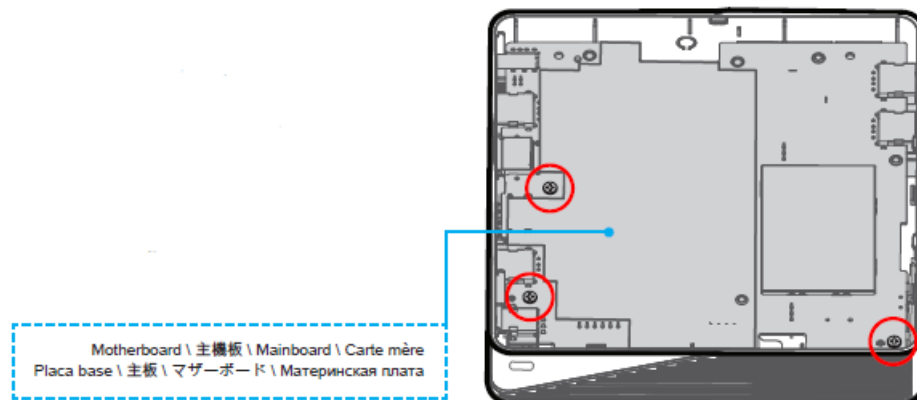
Begin Installation

Unscrew two screws of the back cover and remove it.



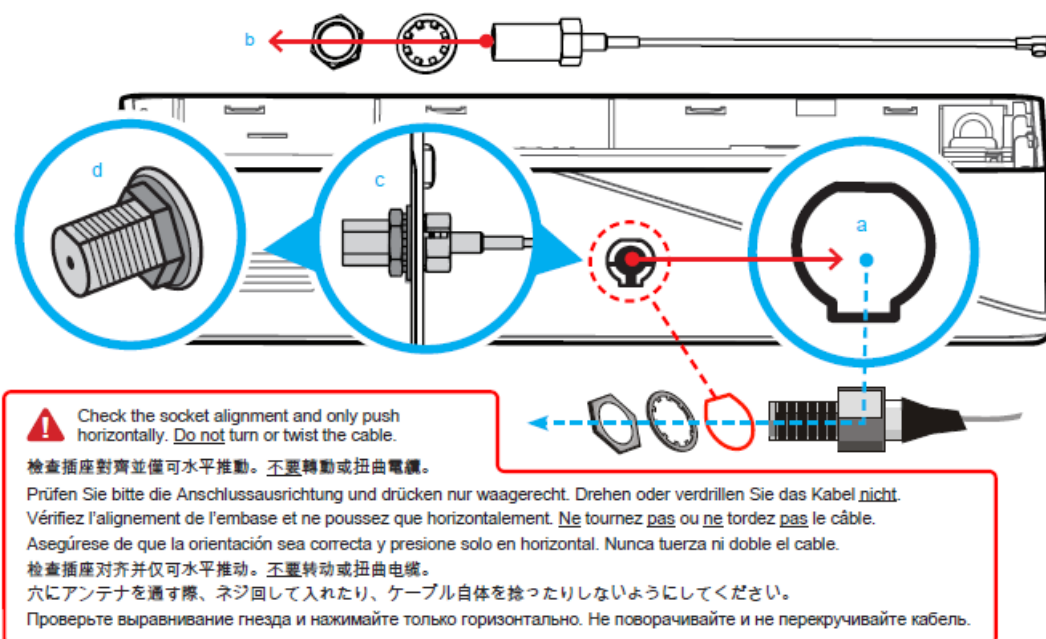
Component Installation

1. Unfasten three screws of the motherboard and put it aside.

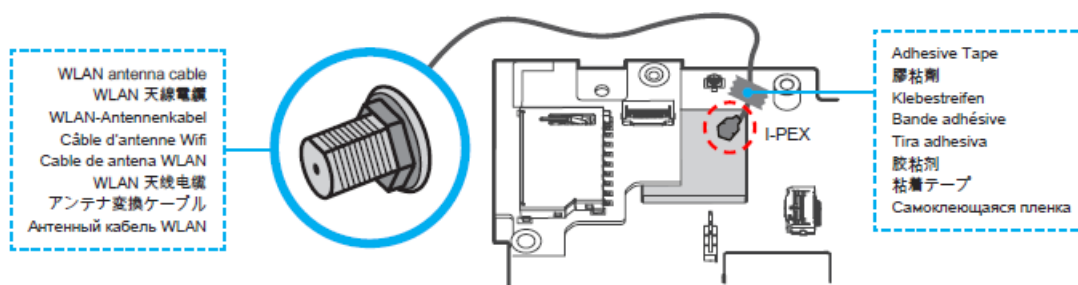


2. Clear the opening for the antenna at the side of the chassis (see picture). Take the antenna cable and remove the locks.

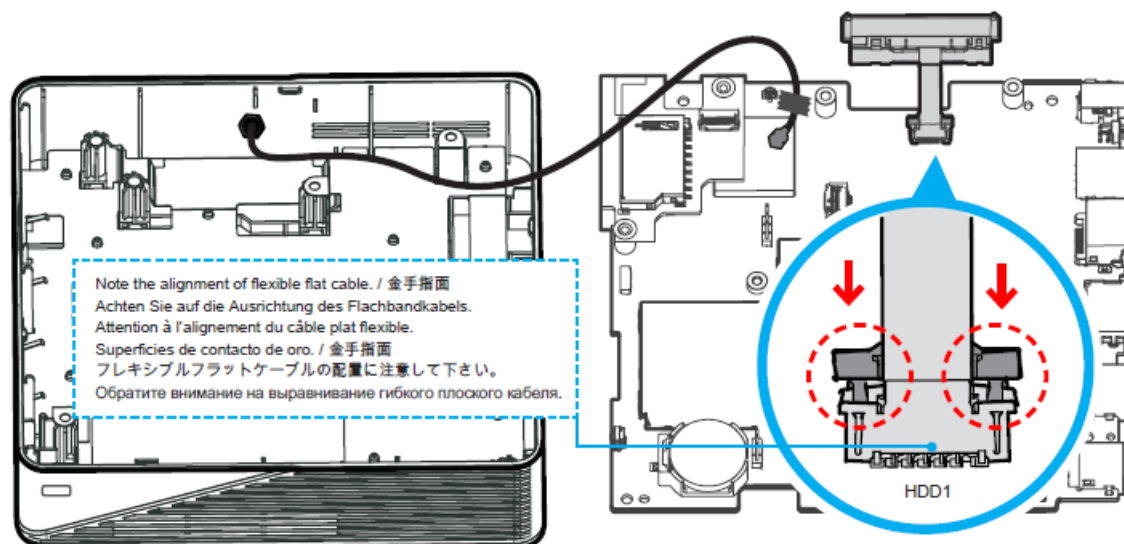
Lead the cable through the mentioned opening and use the locks to affix the antenna from the outside.



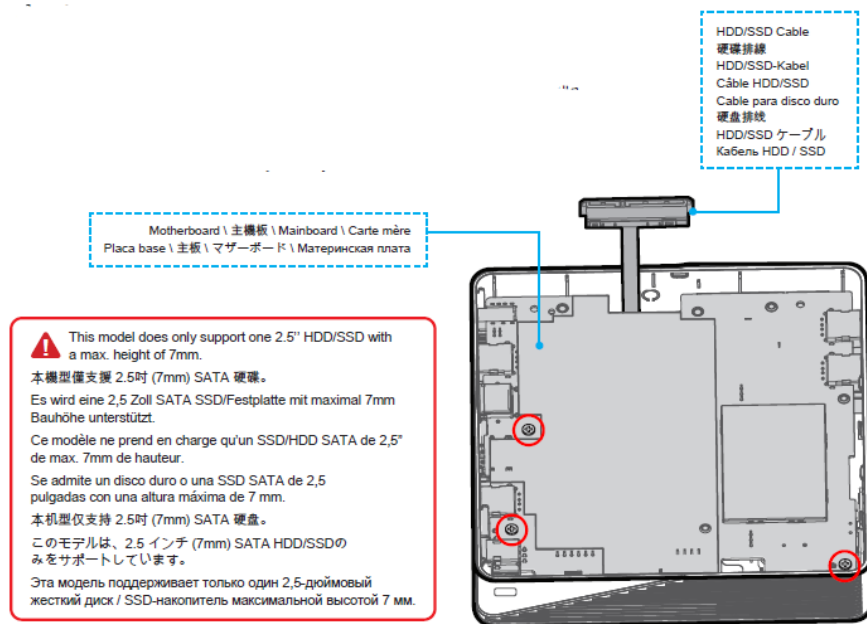
- Please remove the connector of the internal antenna. To avoid a short circuit, please ensure that insulation tape is wrapped around the antenna connector before putting it aside. Now connect the WLAN antenna cable to the I-PEX connector and affix with adhesive tape, as shown.



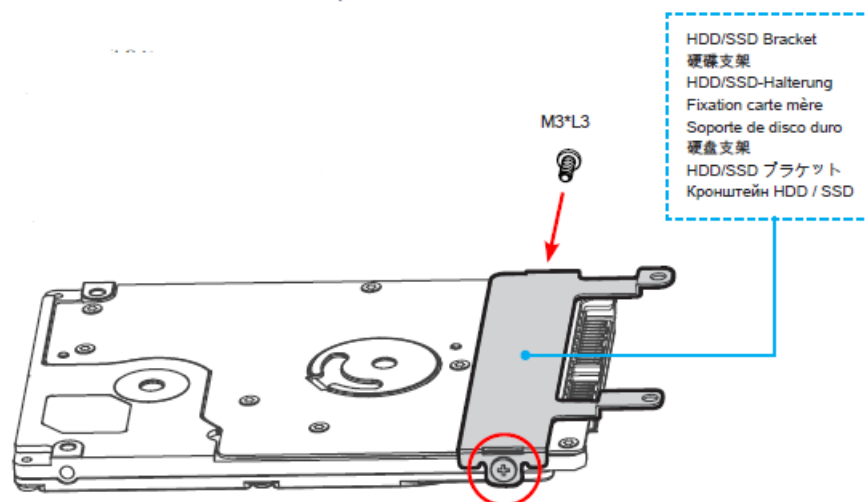
- Pull up two latches of "HDD1" first, then plug the HDD/SSD cable to "HDD1" and slide two latches into the lock position.



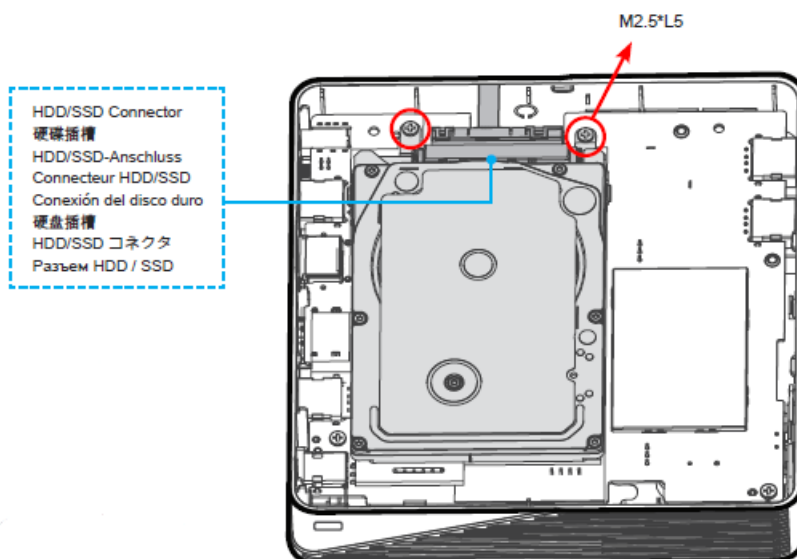
- As shown, replace the motherboard and refasten three screws.



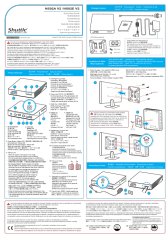
6. Place the HDD/SSD in the bracket and secure with two screws.



7. Connect the HDD/SSD with the appropriate cable and fasten the screws on the mainboard.



8. Replace the cover and refasten two screws.

	<p>Shuttle NS02A V2 0.5-Litre Fanless PC with Android Supports HDMI 2.0 [pdf] User Guide NS02V2, S8CNS02V2, NS02A V2, NS02E V2, 0.5-Litre Fanless PC with Android Supports HD MI 2.0</p>
---	--