



Shuttle Kiosk K15 Series High-Traffic Kiosk Computers User Guide

[Home](#) » [Shuttle](#) » Shuttle Kiosk K15 Series High-Traffic Kiosk Computers User Guide 

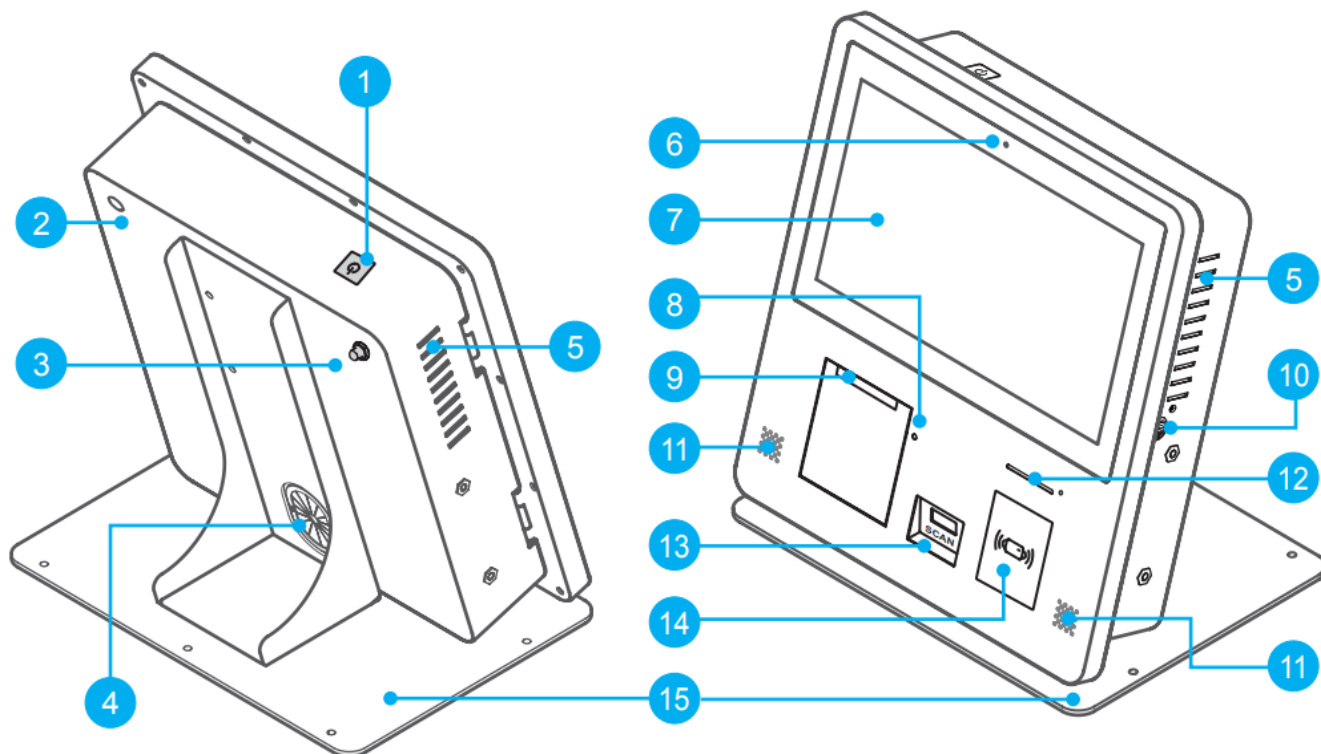
Shuttle Kiosk K15 Series High-Traffic Kiosk Computers User Guide



Contents

- [1 Product Overview](#)
- [2 Opening / Closing the Kiosk](#)
- [3 Package Contents](#)
- [4 Changing the Thermal Roll Paper](#)
- [5 Wifi Antennas Installation \(optional\)](#)
- [6 VESA mounting to the wall \(optional\)](#)
- [7 Powering on the system](#)
- [8 How to use the Touch Panel](#)
- [9 Counter mount and Handle Installation \(optional\)](#)
- [10 Documents / Resources](#)
- [11 Related Posts](#)

Product Overview



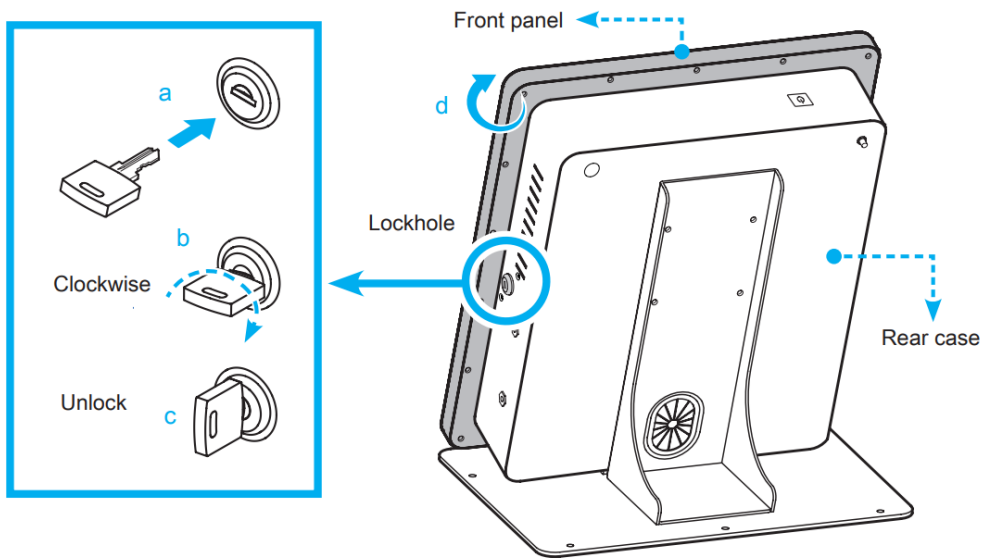
1. Power switch
2. Rear case
3. Connector for wifi antennas
4. Cable hole
5. Thermal vent
6. Webcam
7. 15" Touch display
8. Release button
9. Receipt printer
10. Front panel's lockhole
11. Speakers
12. IC card reader
13. Barcode scanner
14. NFC RFID reader
15. Counter mount (optional)

Opening / Closing the Kiosk

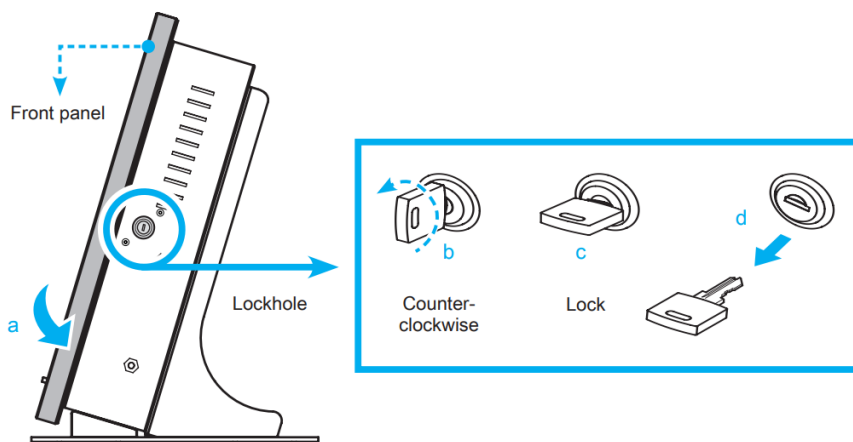


For safety reasons, please ensure that the power cord is disconnected before opening the case. Do not attempt to open the system unless by authorized qualified personnel.

1. Insert the key into the lockhole at the rear case and turn it clockwise to open the front panel.

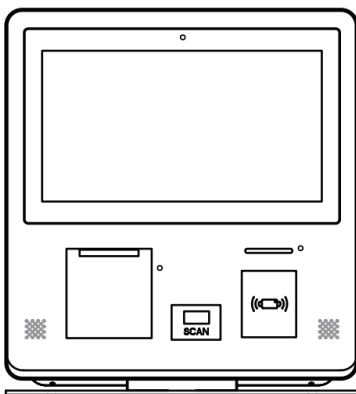


2. Close the front panel in reverse order and remove the key.



Package Contents

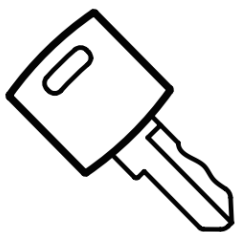
- Kiosk K15WL01 / K15RK01 (x1)



- Wi-Fi Antenna (x1)



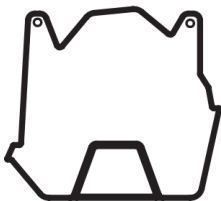
- The key to the case rear door. (x2)



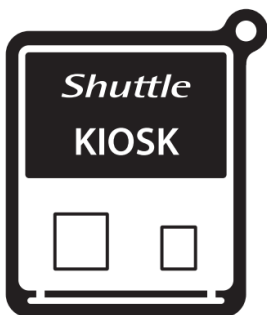
- The key to the printer cover. (x3)



- Roll Paper Partition (x1)



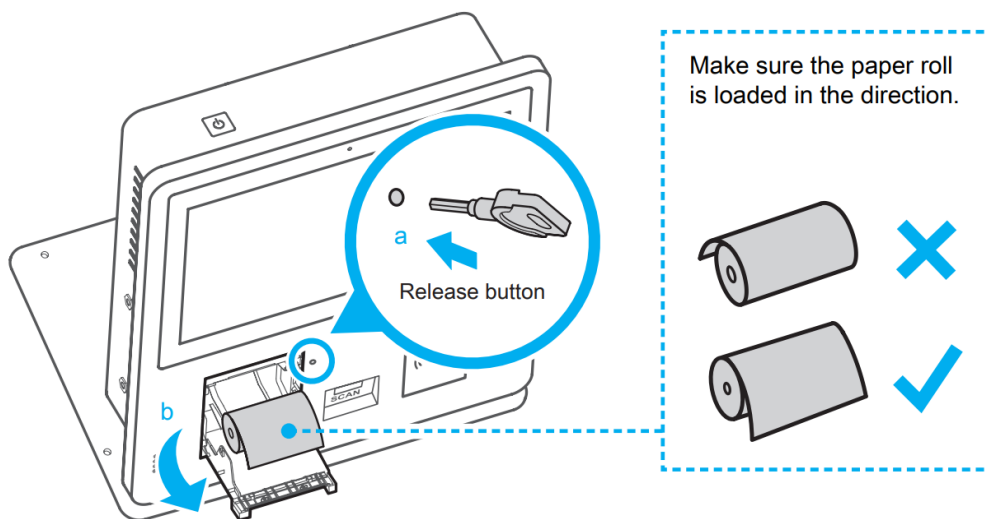
- Magnetic Keychain (x1)



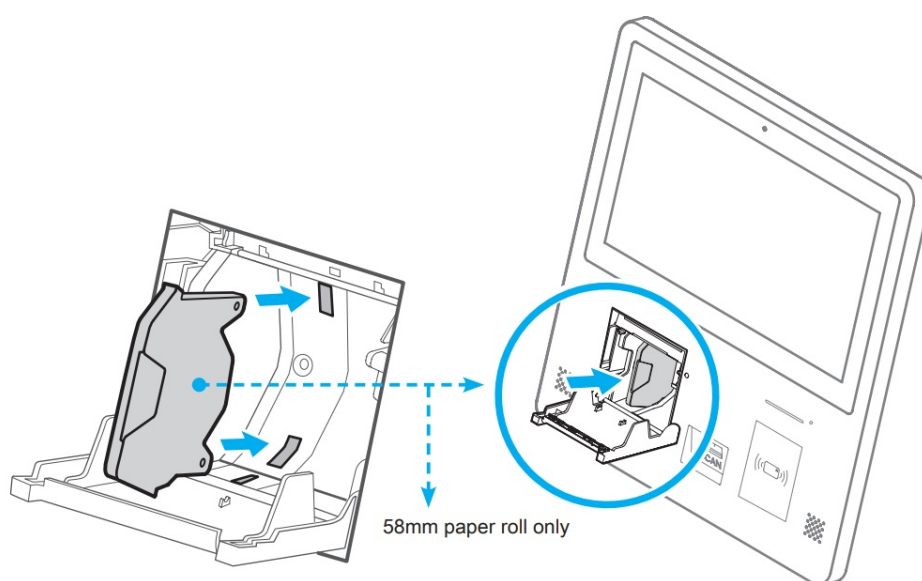
The product's colour and specifications may vary from the actually shipping product. Should any accessories be required, please contact Shuttle or your relevant supplier

Changing the Thermal Roll Paper

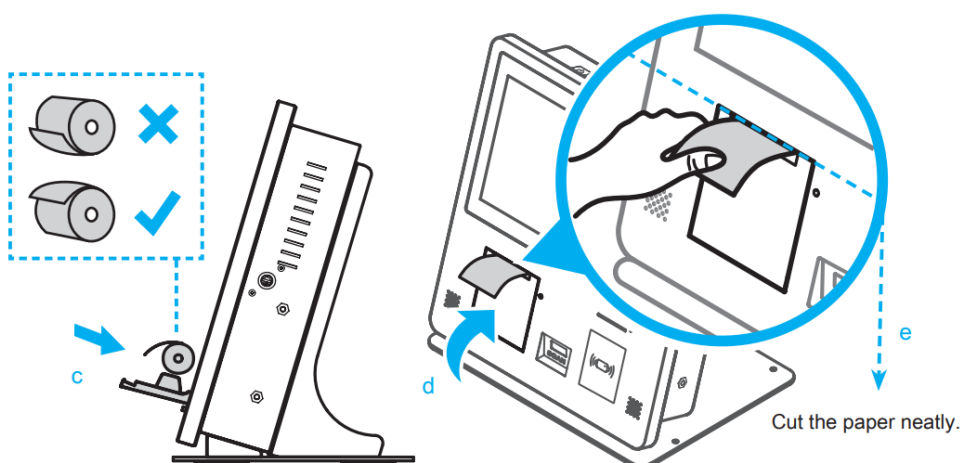
1. As shown, use the key to push the release button to open the printer cover.
2. Remove the used paper roll from the paper tray and load the new paper roll.



- 58mm thermal paper partition installation.
Paper roll width 80mm / 58mm selectable.



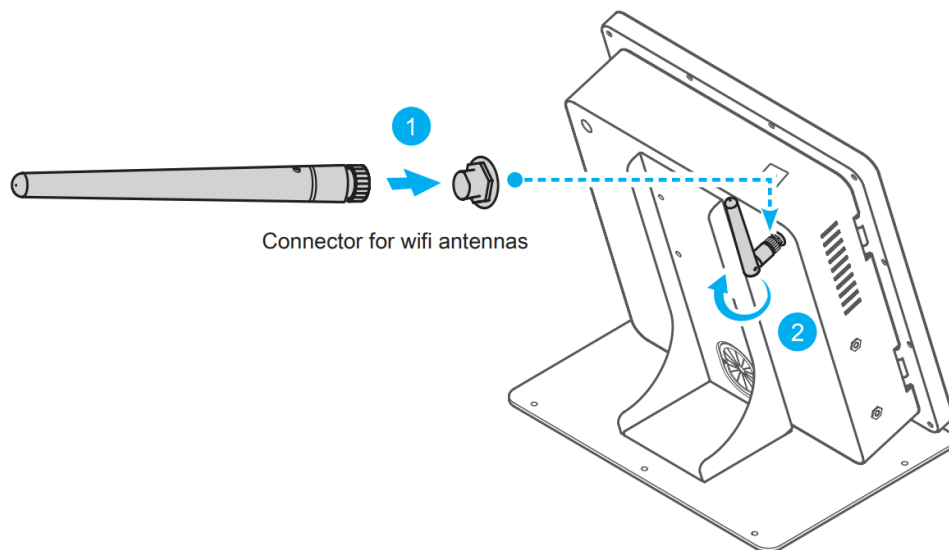
3. Close the printer cover. Tear the excess paper across the tear bar.



Do not touch the print head thermal elements. The print head becomes very hot just after printing and is very dangerous. Be sure to allow the print head to cool down (after printing) before cleaning it. Also, be sure to turn off the printer power before cleaning the print head.

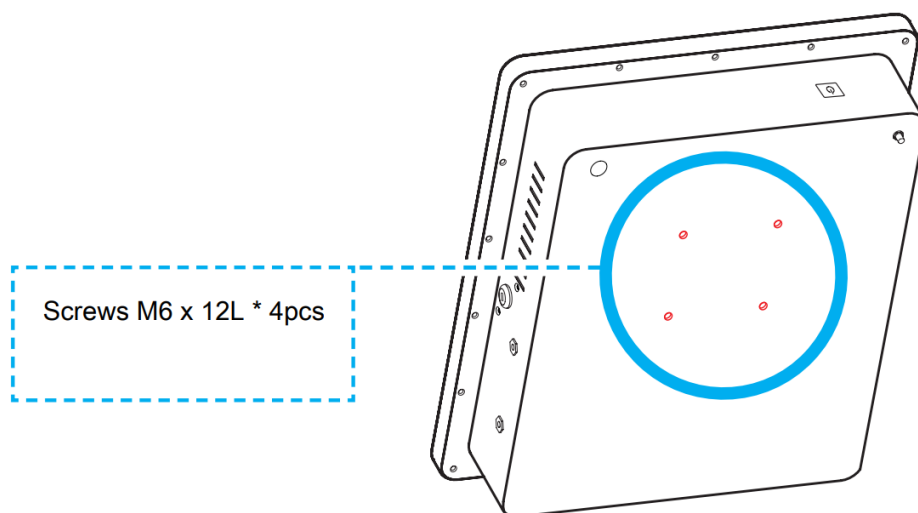
Wifi Antennas Installation (optional)

Take the antennas out of the accessory box. Screw the included antennas on the appropriate connector at the rear case. Make sure it is aligned vertically or horizontally to achieve the best possible signal reception.



VESA mounting to the wall (optional)

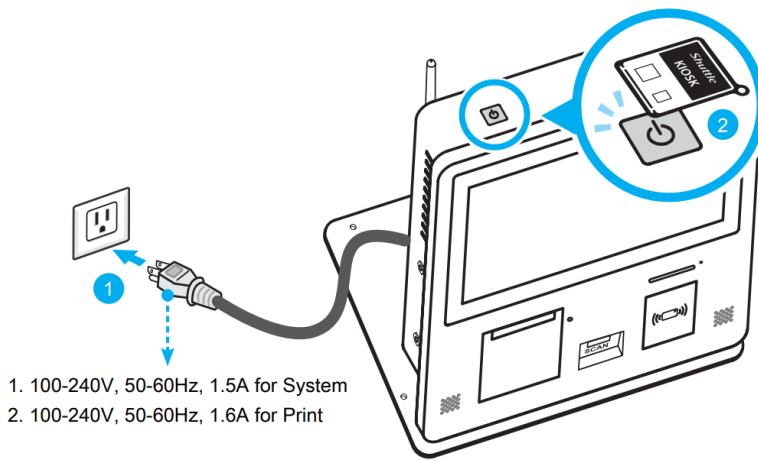
The standard VESA openings show where an arm / wall mount kit which is available separately can be attached.



The K15 series can be wall-mounted using a VESA compatible 100 mm x 100 mm wall / arm bracket. The maximum load capacity is 25 kg and mounting suitable in heights of ≤ 2 m only

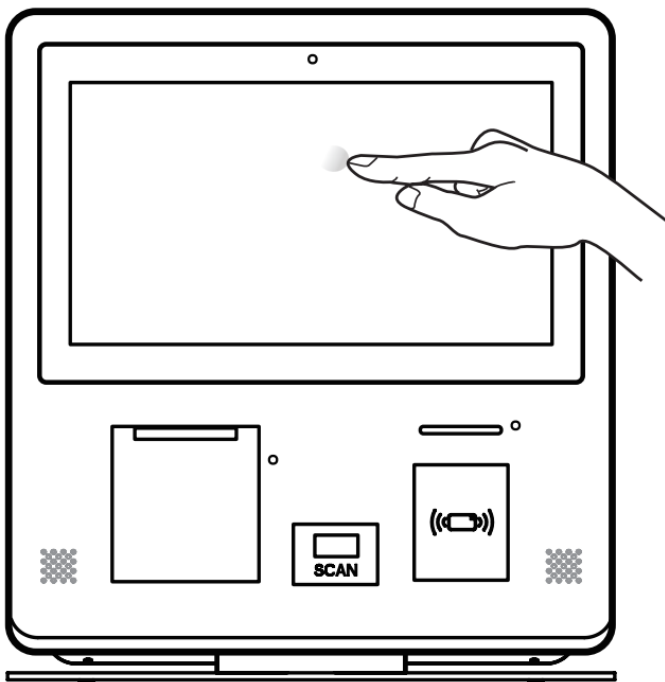
Powering on the system

1. Connect the two power cords to a wall outlet.
 2. Place the magnetic keychain against the power switch for 1 seconds and remove it, then the power status LED will start to blink for 2 seconds and turn on the system.
- Repeat the steps above to turn off the system.



How to use the Touch Panel

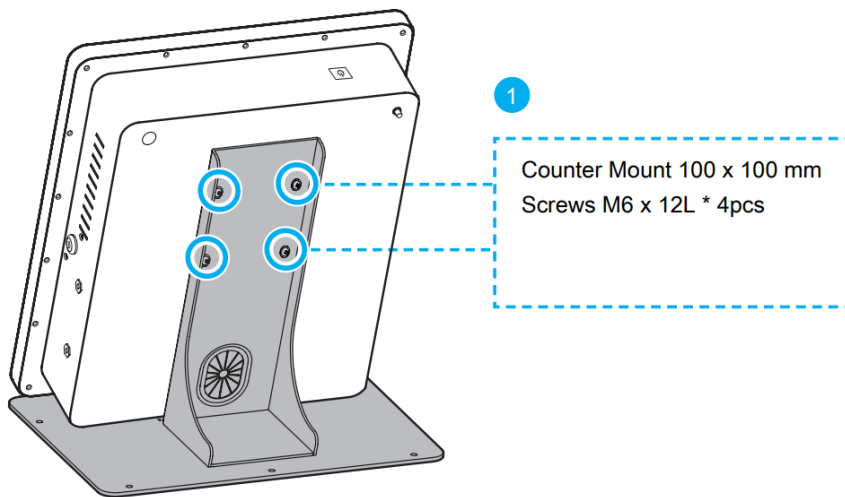
The touch of your finger replaces the input devices and is all you need to operate the Kiosk.



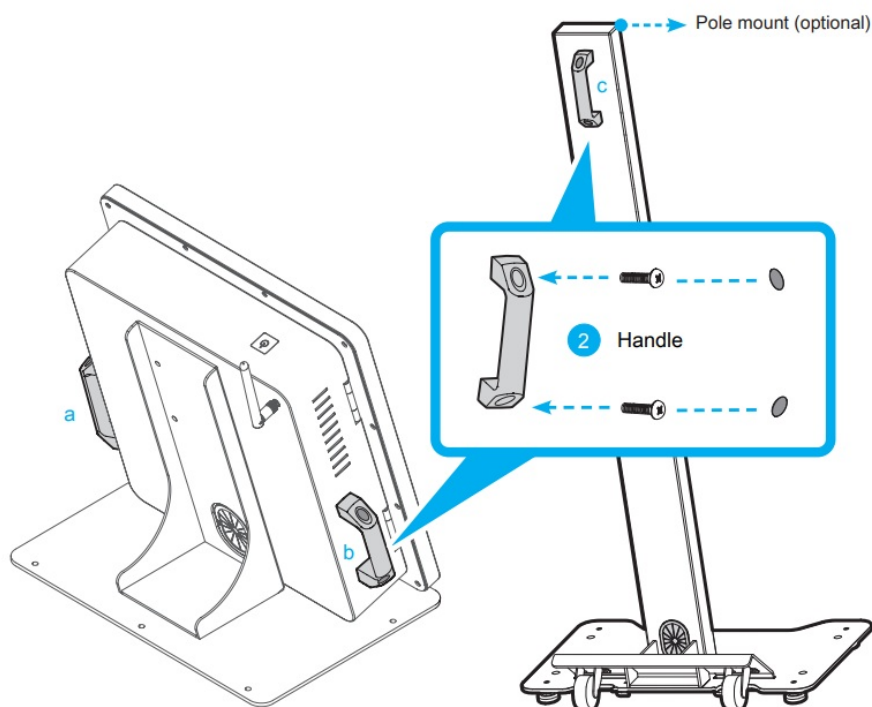
Cleaning the screen: Turn off the system and disconnect all cables. Use a cleaning cloth which is soft, lint-free and a little damp to gently wipe the screen surface. Do not spray liquids directly onto the device.

Counter mount and Handle Installation (optional)

1. As shown, install the counter mount and secure with the four screws.
2. As shown, install the left and right (a, b) handles on the both sides of rear case and secure with the four screws. Gently push the four rubber cover into the four screw holes until it properly sits in place.



! If you want to move the Kiosk, please use the left and right (a, b) handles on the machine and the handle (c) on the pole base to assist in the operation. Do not pull the white front frame parts to avoid structural damage caused by uneven force on the left and right sides of the Kiosk.



! Incorrectly replacing the battery may damage this computer. Replace only with the same or equivalent as recommended by Shuttle. Dispose of used batteries according to the manufacturer's instructions.

Kiosk is recommended to be used in an indoor environment to avoid exposure to a humid environment. If it is not used for a long time, it is recommended to be moisture-proof to avoid affecting the life of the appliance; if it is in a humid environment, it is normal to produce a little fog in front of the screen. It can be automatically eliminated after a period of normal use.

- for PLUGGABLE EQUIPMENT, the socket-outlet shall be installed near the equipment and shall be easily accessible.
- That all power sources shall be disconnected before servicing to avoid shock hazard.

The unit can be operated at an ambient temperature of max. 35°C (95°F).

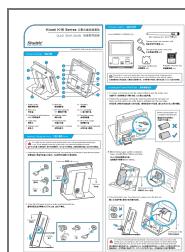
Do not expose it to temperature below 5°C (41°F) or above 35°C (95°F).

- **Stability of equipment**

- Do not place the product in an unstable location.
- Arrange the wires and cables connected to the product to prevent tripping, pulling or entanglement.
- Make sure the product does not hang over the edge of the supporting furniture.
- Do not place the product on supporting furniture higher than 1 meter.
- Do not place objects that attract children to climb, such as toys.

Shuttle[®]

Documents / Resources



[Shuttle Kiosk K15 Series High-Traffic Kiosk Computers](#) [pdf] User Guide
Kiosk K15 Series, High-Traffic Kiosk Computers, Kiosk K15 Series High-Traffic Kiosk Computer
s, Kiosk Computers, Computers

[Manuals+](#)