



Shuttle BPCWL02 Dual Gigabit Lan Rugged Embedded Box PC User Guide

[Home](#) » [Shuttle](#) » Shuttle BPCWL02 Dual Gigabit Lan Rugged Embedded Box PC User Guide 

Contents

- [1 Shuttle BPCWL02 Dual Gigabit Lan Rugged Embedded Box PC](#)
- [2 Product Overview](#)
- [3 Begin Installation](#)
- [4 Documents / Resources](#)
 - [4.1 References](#)
- [5 Related Posts](#)

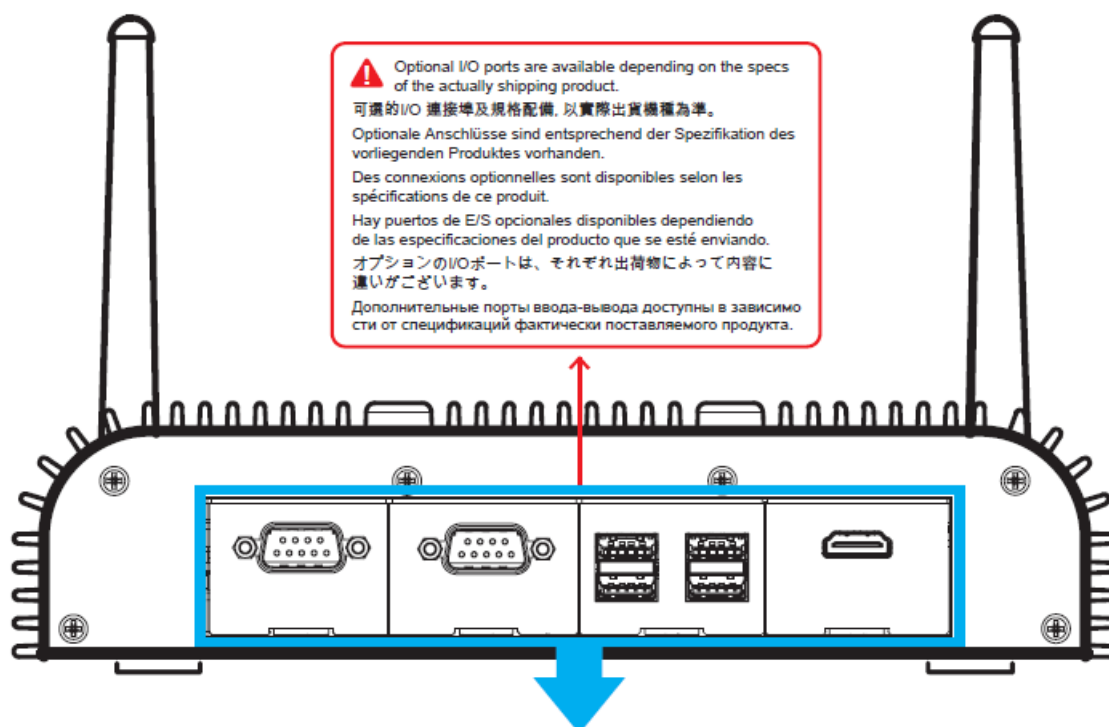
Shuttle®

Shuttle BPCWL02 Dual Gigabit Lan Rugged Embedded Box PC



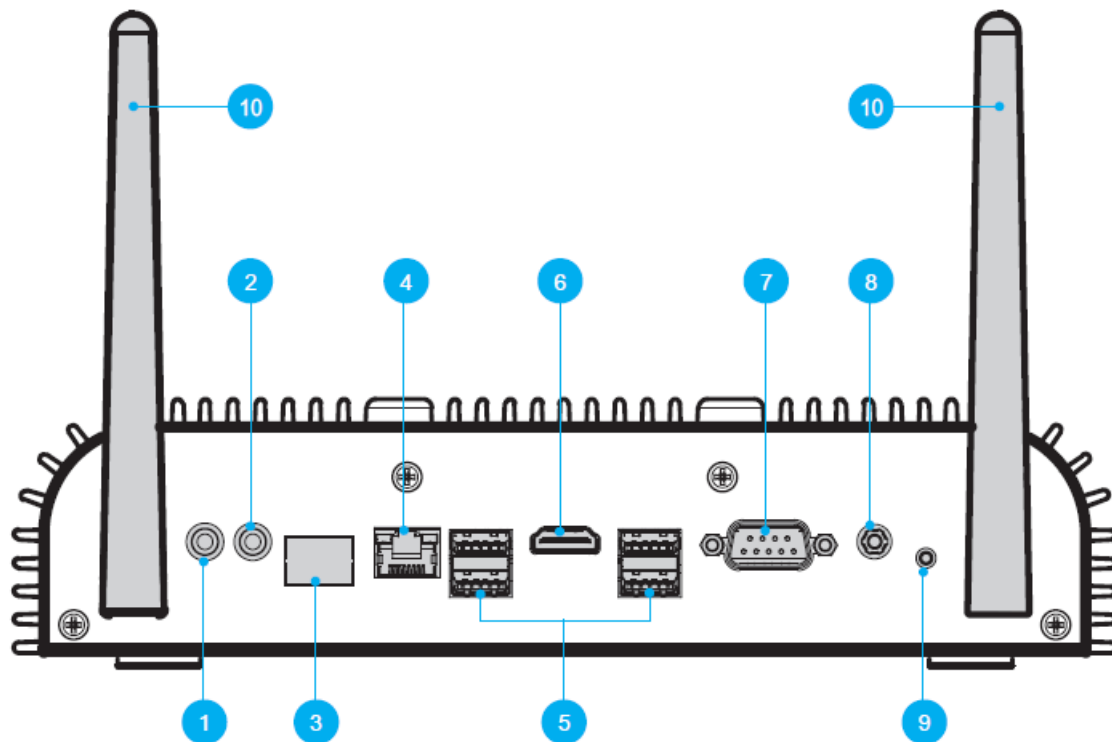
Product Overview

Front Panel



Optional I/O Port 可選的 I / O 端口 Optionaler Anschluss Connexion optionnelle Puerto de E/S opcional オプション I/O ポート Дополнительный порт ввода-вывода	Occupied Sections 佔用部分 Belegte Bereiche Sections occupées Secciones ocupadas 専有부분 Занятые секции	Specifications / Limitations 規格 / 限制 Spezifikation / Einschränkungen Spécifications / Limitations Especificaciones / Limitaciones 規格及び制限 Спецификации / Ограничения
HDMI 1.4 / 2.0	1	Choose one from four optional display boards. 顯示面板連接埠四選一。 Es stehen vier optionale Grafikports zur Verfügung. Quatre ports vidéos optionnels sont disponibles. Hay cuatro puertos gráficos opcionales disponibles. オプションの映像出力端子を選択します。 Выберите один из четырех видов дополнительной панели дисплея.
DisplayPort 1.2 (DP)	1	
D-Sub (VGA)	1	
DVI-I (Single Link)	1	Max. resolution: \ 最高解析度: \ Max. Auflösung: Résolution max: \ Máxima resolución: 最大解像度: \ Максимальное разрешение: 1. HDMI 1.4: 4k/30Hz 2. HDMI 2.0: 4k/60Hz 3. DisplayPort: 4k/60Hz 4. DVI-I/D-Sub: 1920x1080
USB 2.0	1	Maximum: 2 x Quad USB 2.0 board 最多: 2 個 Quad USB 小板 Max. zwei Quad-USB-Boards Maximum : 2x cartes Quad USB 2.0 Máximo: 2x Quad USB 2.0 board 最大: 4 基 USB ポート x 2 Максимум: 2 платы Quad USB 2.0
COM4	1	RS232 only 僅適用於 RS232 Nur für RS232 uniquement en RS232
COM2, COM3	2	RS232 / RS422 / RS485 Power supply : Ring in/5V 電源支援 : Ring in/5V 5V Hilfsspannung (RI-Pin) Tension auxiliaire de 5V (RI-Pin) 5V de voltaje auxiliar (RI-Pin) 供給電源 : Ring in / 5V Электропитание: вход Ring / 5V

Back Panel

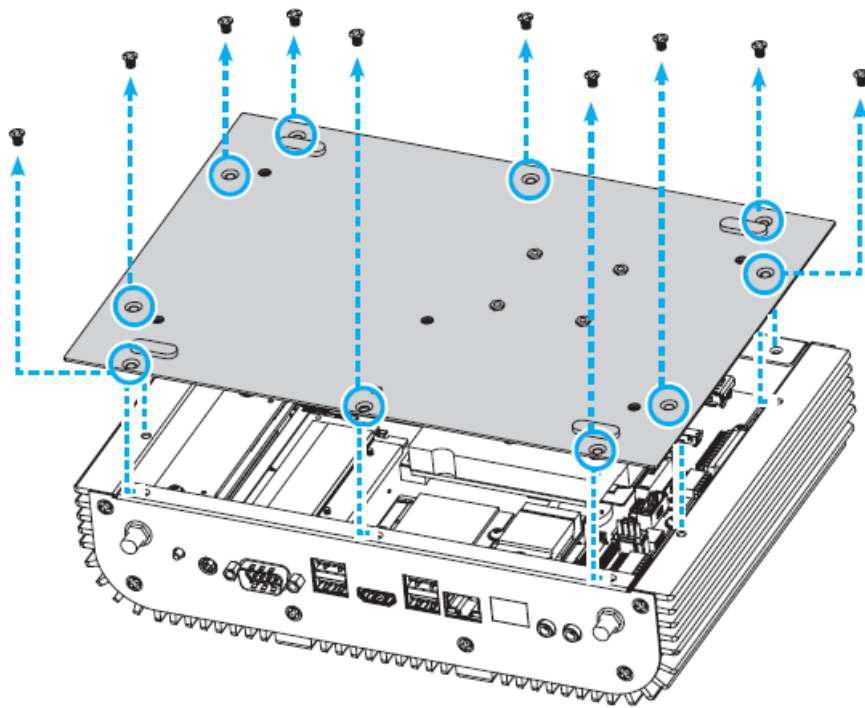


1. Headphones / Line-out jack
2. Microphone
3. LAN port (supports wake on LAN)(optional)
4. LAN port (supports wake on LAN)
5. USB 3.0 ports
6. HDMI port
7. COM port (RS232 only)
8. Power jack (DC-IN)
9. Power button
10. Connector for WLAN Dipole antennas (optional)

Begin Installation

For safety reasons, please ensure that the power cord is disconnected before opening the case.

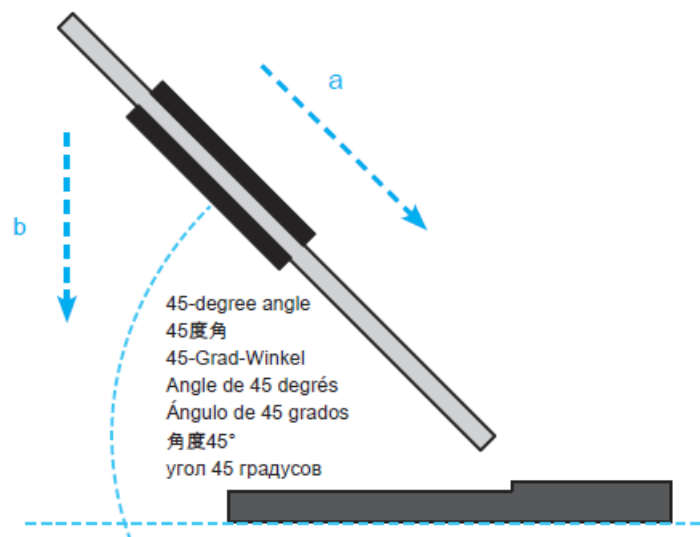
1. Unscrew the ten screws of the chassis cover and remove it.

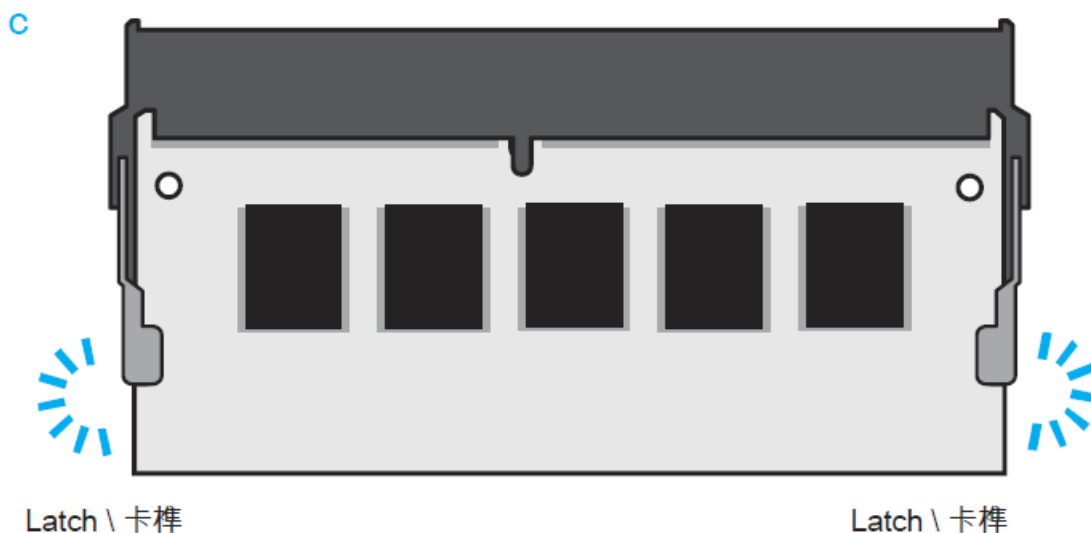


Memory Module Installation

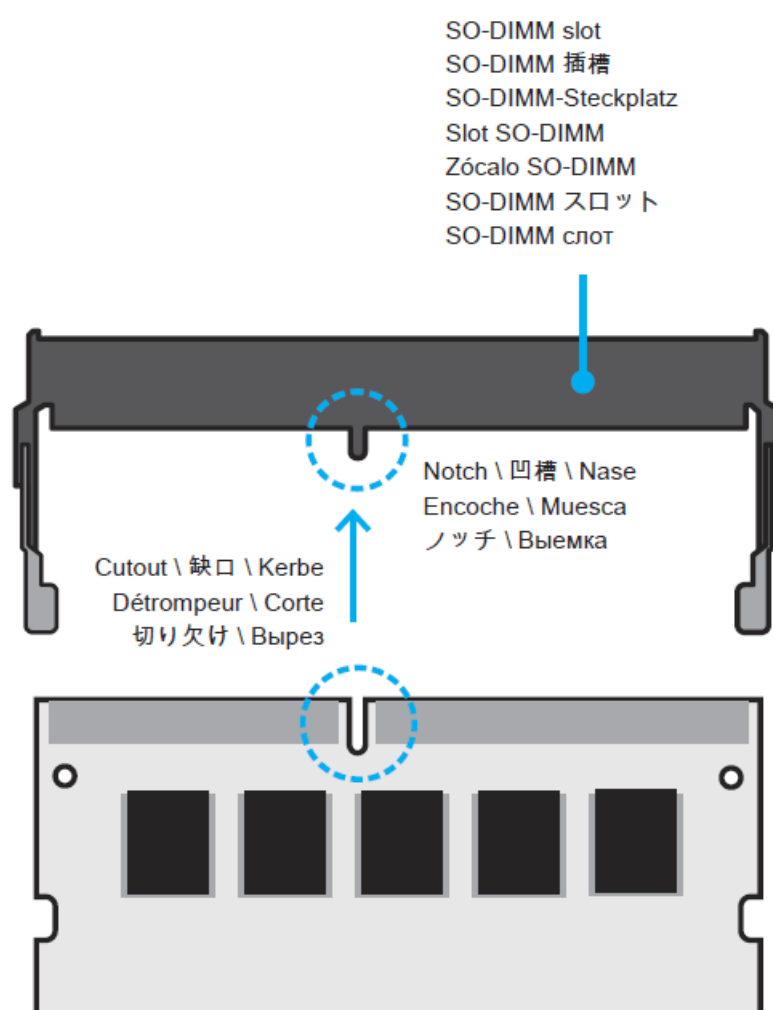
This motherboard does only support 1.2 V DDR4 SO-DIMM memory modules.

1. Locate the SO-DIMM slots on the motherboard.
2. Align the notch of the memory module with the one of the relevant memory slot.
3. Gently insert the module into the slot in a 45-degree angle.





- Carefully push down the memory module until it snaps into the locking mechanism.

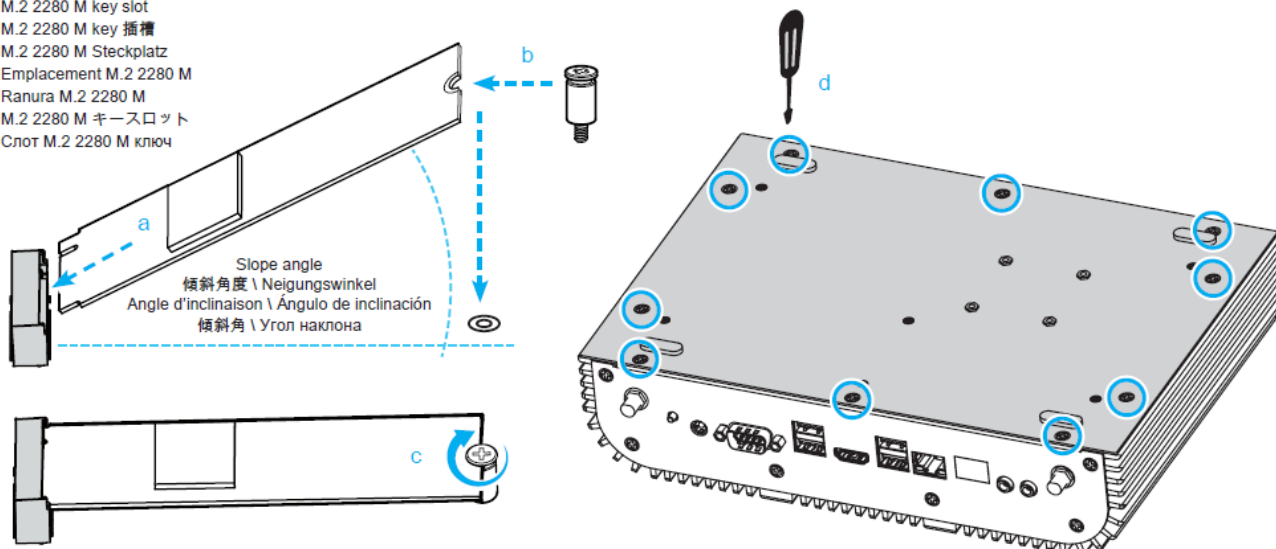


- Repeat the above steps to install an additional memory module, if required.

M.2 Device Installation

- Locate the M.2 key slots on the motherboard, unfasten the screw first.
- Install the M.2 device into the M.2 slot and secure with the screw.

➤ M.2 2280 M key slot
 M.2 2280 M key 插槽
 M.2 2280 M Steckplatz
 Emplacement M.2 2280 M
 Ranura M.2 2280 M
 M.2 2280 M キースロット
 Слот M.2 2280 M ключ

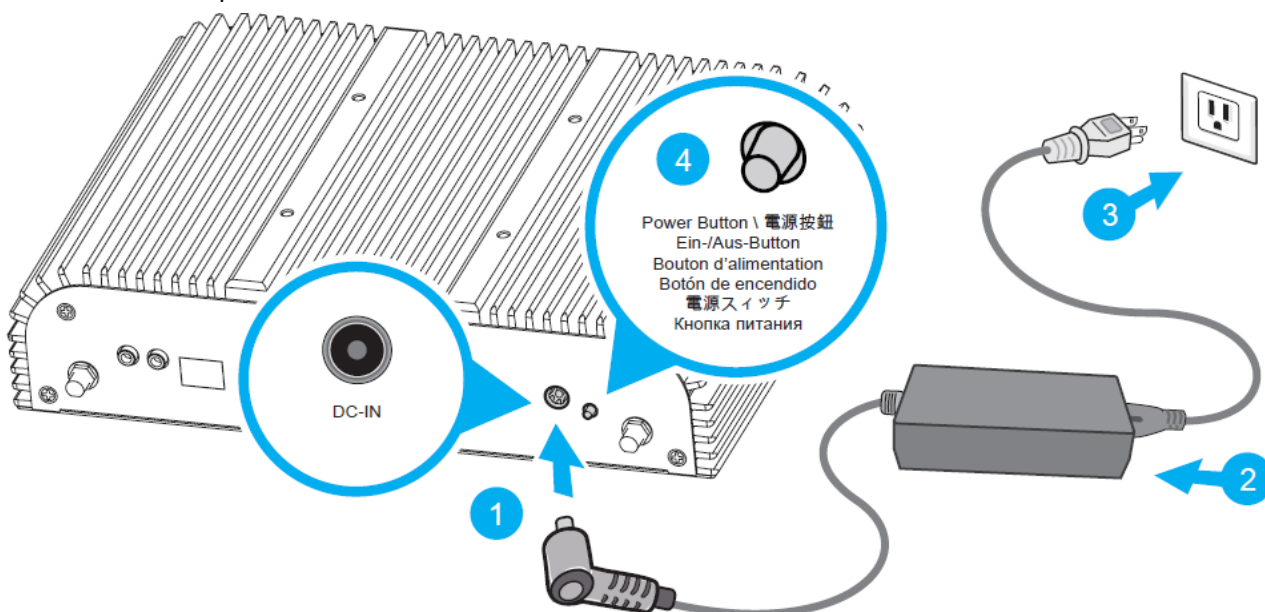


3. Please replace and affix the chassis cover with ten screws.

Powering on the system

Follow the steps (1-3) below to connect the AC adapter to the power jack (DC-IN). Press the power button (4) to turn on the system.

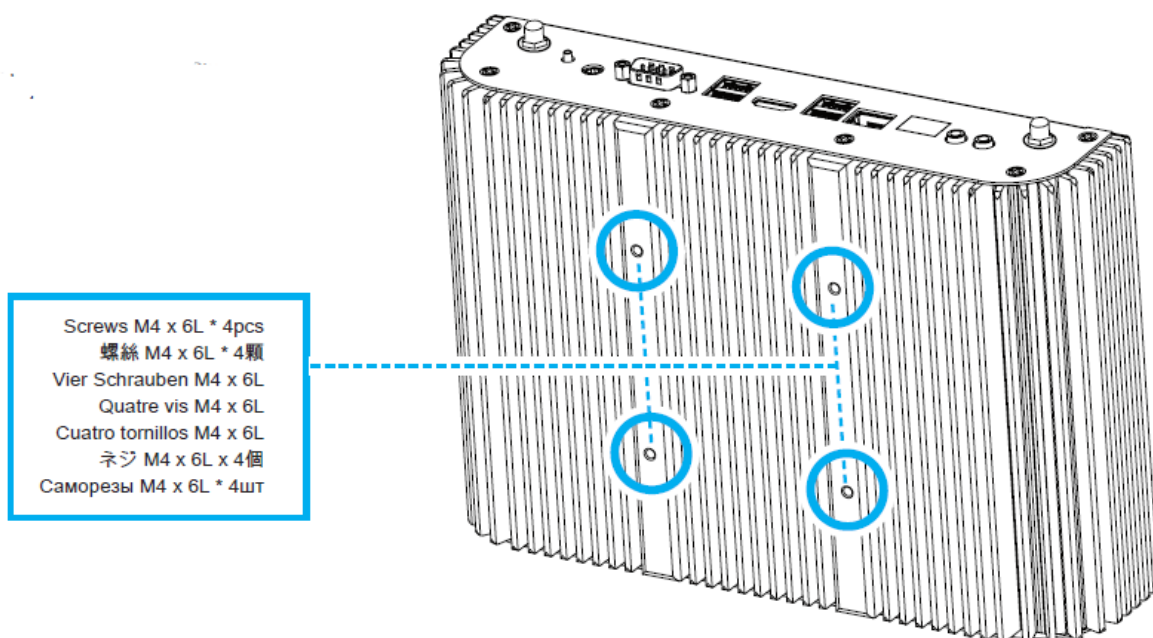
- Press and hold the power button for 5 seconds to force shutdown.



- Do not use inferior extension cords as this may result in damage to your Box-PC. The Box-PC comes with its own AC adapter.
- Do not use a different adapter to power the Box-PC and other electrical devices.

VESA mounting it to the wall (optional)

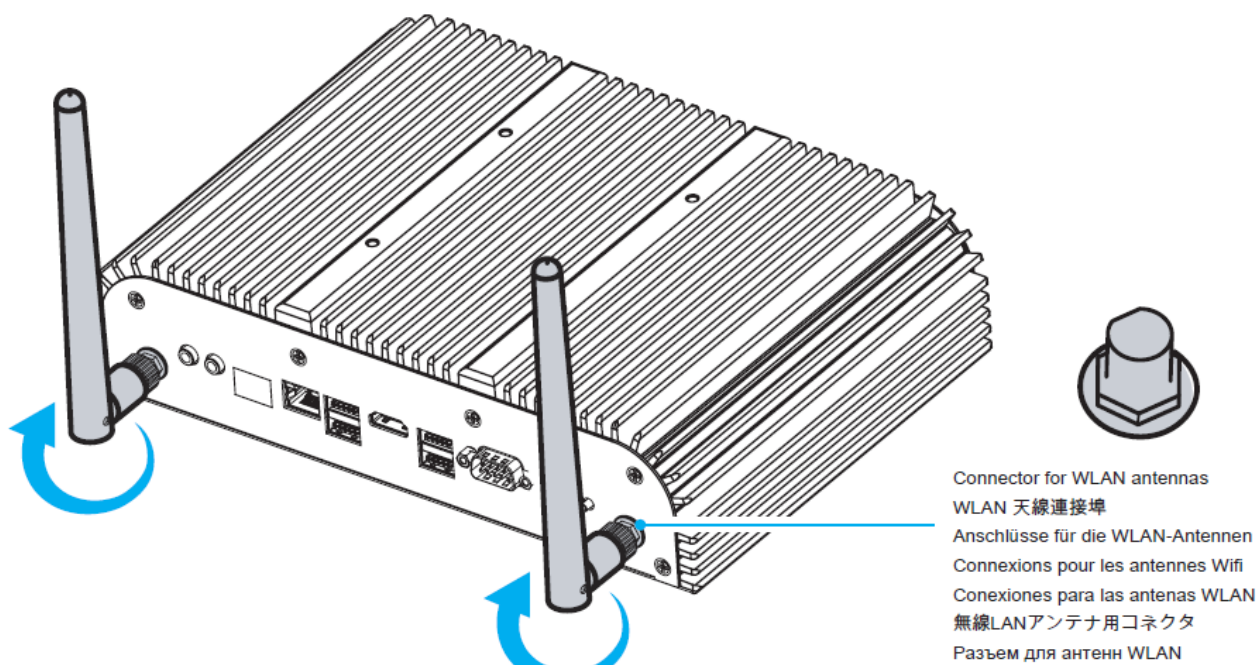
- The standard VESA openings show where an arm/wall mount kit which is available separately can be attached



The Box-PC can be wall-mounted using a VESA compatible 75 mm x 75 mm wall/arm bracket. The maximum load capacity is 10 kg and mounting suitable in heights of ≤ 2 m only. The metal thickness of the VESA mount must be between 1.6 and 2.0 mm.

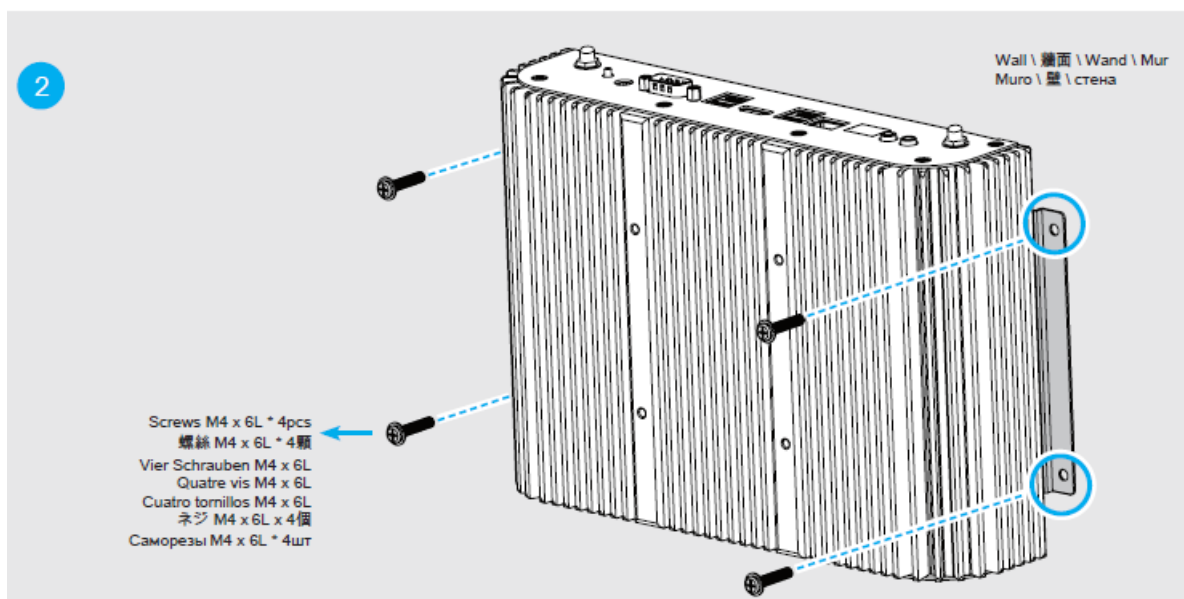
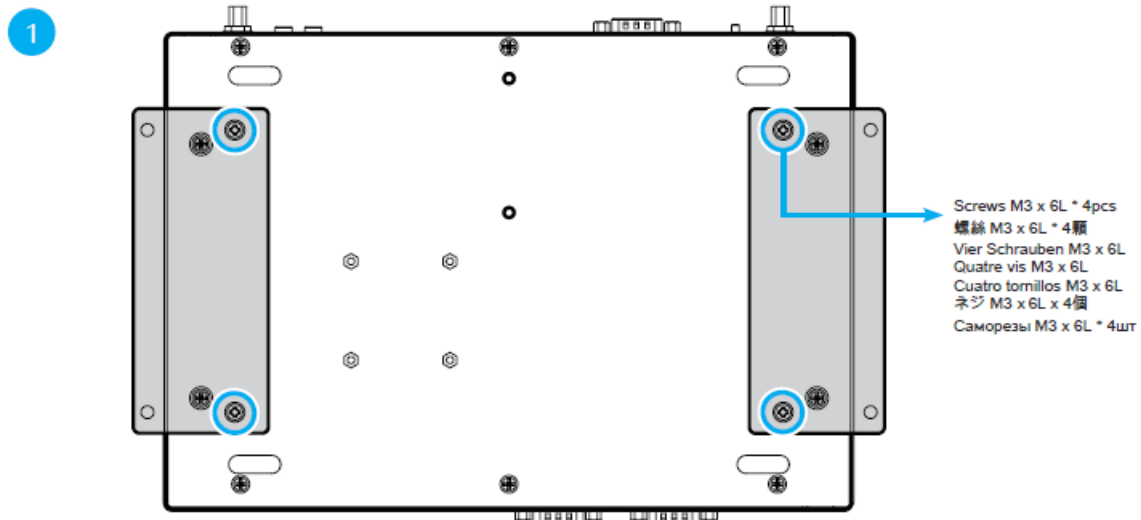
Installation of WLAN antennas (optional)

1. Take the two antennas out of the accessory box.
2. Screw the antennas on to the appropriate connectors on the back panel.



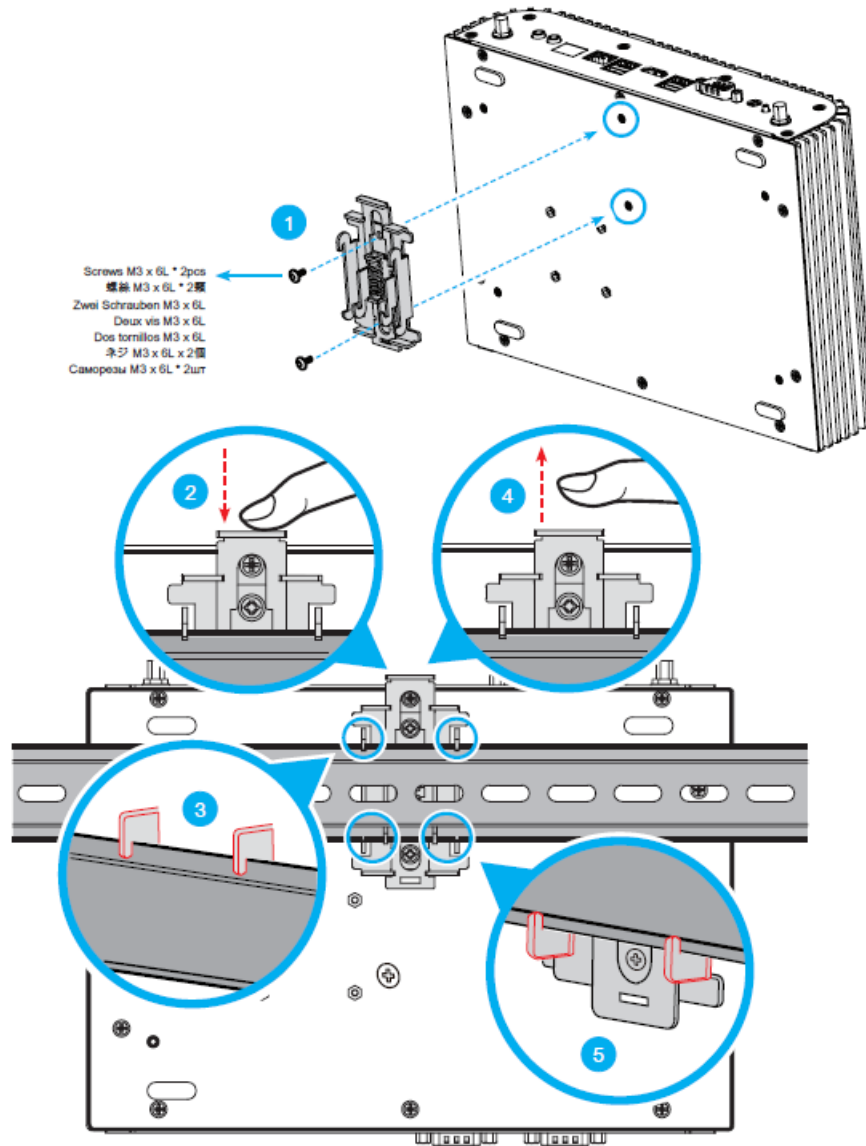
Ear mounting to the wall (optional)

- Follow the steps 1-2 to install the ear mount.



Using the Din Rail (optional)

Follow the steps 1-5 to affix the Box-PC on a DIN rail.

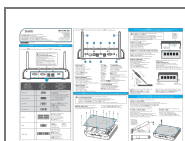


Safety Information

Incorrectly replacing the battery may damage this computer. Replace only with the same or equivalent as recommended by Shuttle. Dispose of used batteries according to the manufacturer's instructions. Should any accessories be required, please contact Shuttle or your relevant supplier.

More information on this product can be found at: <https://bit.ly/BPCWL02>

Documents / Resources



Shuttle BPCWL02 Dual Gigabit Lan Rugged Embedded Box PC [pdf] User Guide
 BPCWL02 Dual Gigabit Lan Rugged Embedded Box PC, BPCWL02, Dual Gigabit Lan Rugged Embedded Box PC, Gigabit Lan Rugged Embedded Box PC, Lan Rugged Embedded Box PC, Rugged Embedded Box PC, Embedded Box PC, Box PC, PC

References

- [Shuttle Global - BPCWL02](https://bit.ly/BPCWL02)

