

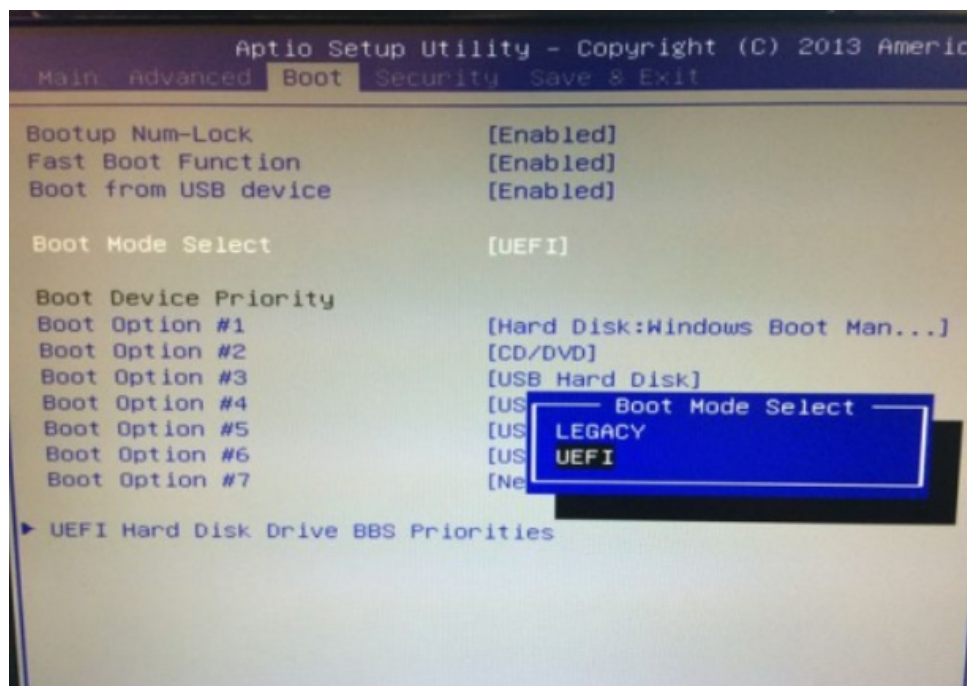


## Contents [ [hide](#) ]

- [1 Shuttle BIOS EL Series Windows 10 Boot Menu](#)
- [2 Notice](#)
- [3 BIOS Setup](#)
- [4 BIOS Setup Menu](#)
- [5 Documents / Resources](#)
  - [5.1 References](#)



## Shuttle BIOS EL Series Windows 10 Boot Menu



For the : WL/AL/EL Series

## **Notice**

The illustrations in this user's manual are for reference only.

Actual product specifications may vary with territory.

The information in this user's manual is subject to change without notice.

THE MANUFACTURER OR RESELLER SHALL NOT BE LIABLE FOR ERRORS OR OMISSIONS CONTAINED IN THIS MANUAL AND SHALL NOT BE LIABLE FOR ANY CONSEQUENTIAL DAMAGES, WHICH MAY RESULT FROM THE PERFORMANCE OR USE OF THIS MANUAL.

The information in this user's manual is protected by copyright laws. No part of this manual may be photocopied or reproduced in any form without prior written authorization from the copyright owners.

Product names mentioned herein may be trademarks and/or registered trademarks of their respective owners/companies.

The software described in this manual is delivered under a license agreement. The software may be used or copied only in accordance with the terms of the agreement. This product incorporates copyright protection technology that is protected by U.S. patents and other intellectual property rights.

Reverse engineering or disassembly is prohibited.

Do not throw this electronic device into the trash when discarding. To minimize pollution and ensure utmost protection of the global environment, please recycle.

For more information on the Waste from Electrical and Electronics Equipment (WEEE) regulations, visit [http://ec.europa.eu/environment/waste/weee/index\\_en.htm](http://ec.europa.eu/environment/waste/weee/index_en.htm)

## **BIOS Setup**

### **About BIOS Setup**

The default BIOS (Basic Input/Output System) is already properly configured and optimized, there is normally no need to run this utility.

### **When to Use BIOS Setup ?**

You may need to run the BIOS Setup when:

- An error message appears on the screen during the system booting up and is requested to run SETUP.
- You want to change the default settings for customized features.
- You want to reload the default BIOS settings.

**CAUTION!** We strongly recommend that you change the BIOS settings only with the help of trained service personnel.

## How to run BIOS Setup ?


To run the BIOS Setup Utility, turn on the Box-PC and press the [Del] or [F2] key during the POST procedure.

If the message disappears before you respond and you still wish to enter Setup, either restart the system by turning it OFF and ON, or simultaneously pressing [Ctrl]+[Alt]+[Del] keys to restart.

The setup function can only be invoked by pressing [Del] or [F2] key during POST, which provides an approach to change some setting and configurations the user prefers, and the changed values will be saved in the NVRAM and will take effect after the system reboots.

Press [F7] key for the oot Menu.


## When OS support is Windows 11 :

1. Click the “Start  menu” and select “Settings”.
2. Select “Windows Update” and Click “Advanced options”.
3. Click “Recovery”.
4. Under “Advanced startup”, click “Restart now”.

The system will restart and show the Windows 11 boot menu.

5. Select “Troubleshoot”.
6. Choose “Advanced options”.
7. Select “UEFI Firmware Settings”.
8. Click “Restart” to restart the system and enter UEFI (BIOS).

## When OS support is Windows 10 :

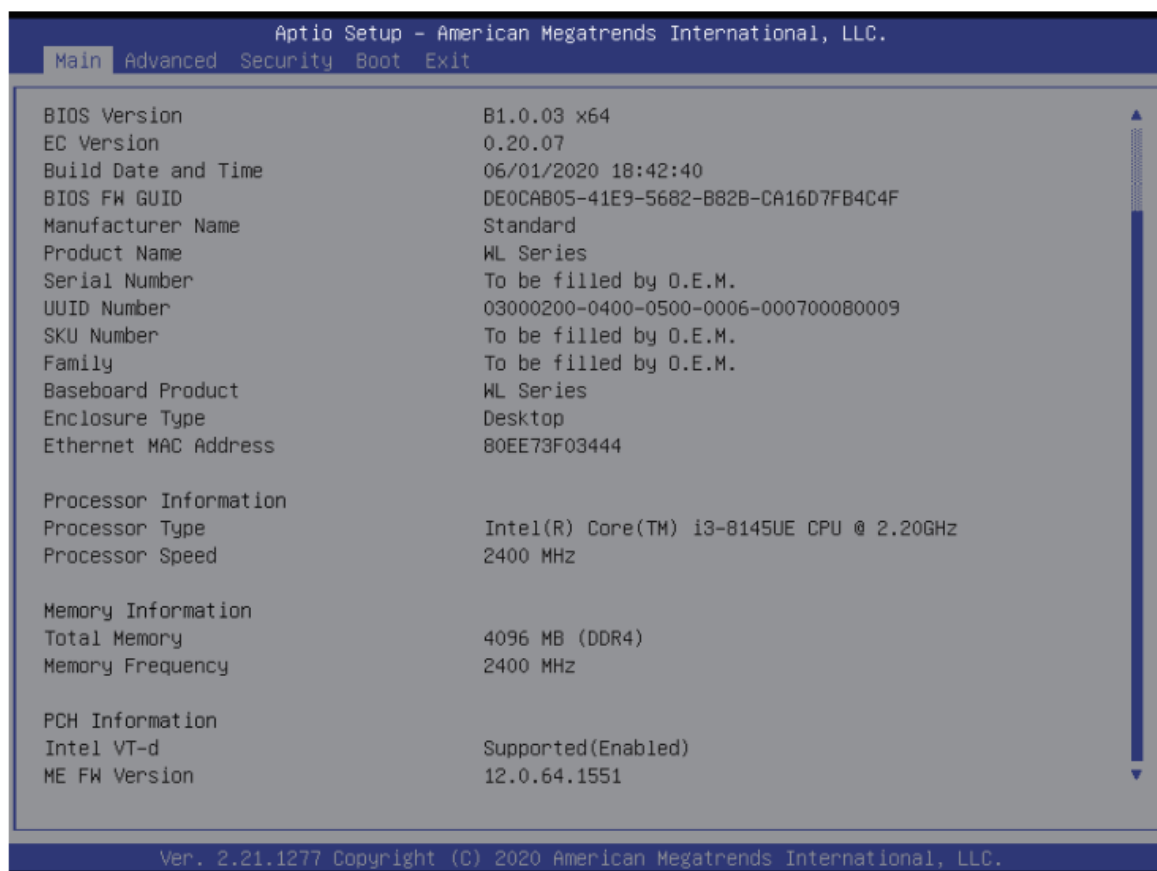
1. Click the “Start  menu” and select “Settings”.
2. Select “Update and Security”.
3. Click “Recovery”.
4. Under “Advanced startup”, click “Restart now”.

The system will restart and show the Windows 10 boot menu.

5. Select “Troubleshoot”.
6. Choose “Advanced options”.
7. Select “UEFI Firmware Settings”.
8. Click “Restart” to restart the system and enter UEFI (BIOS).

## BIOS Setup Menu

### Main Menu

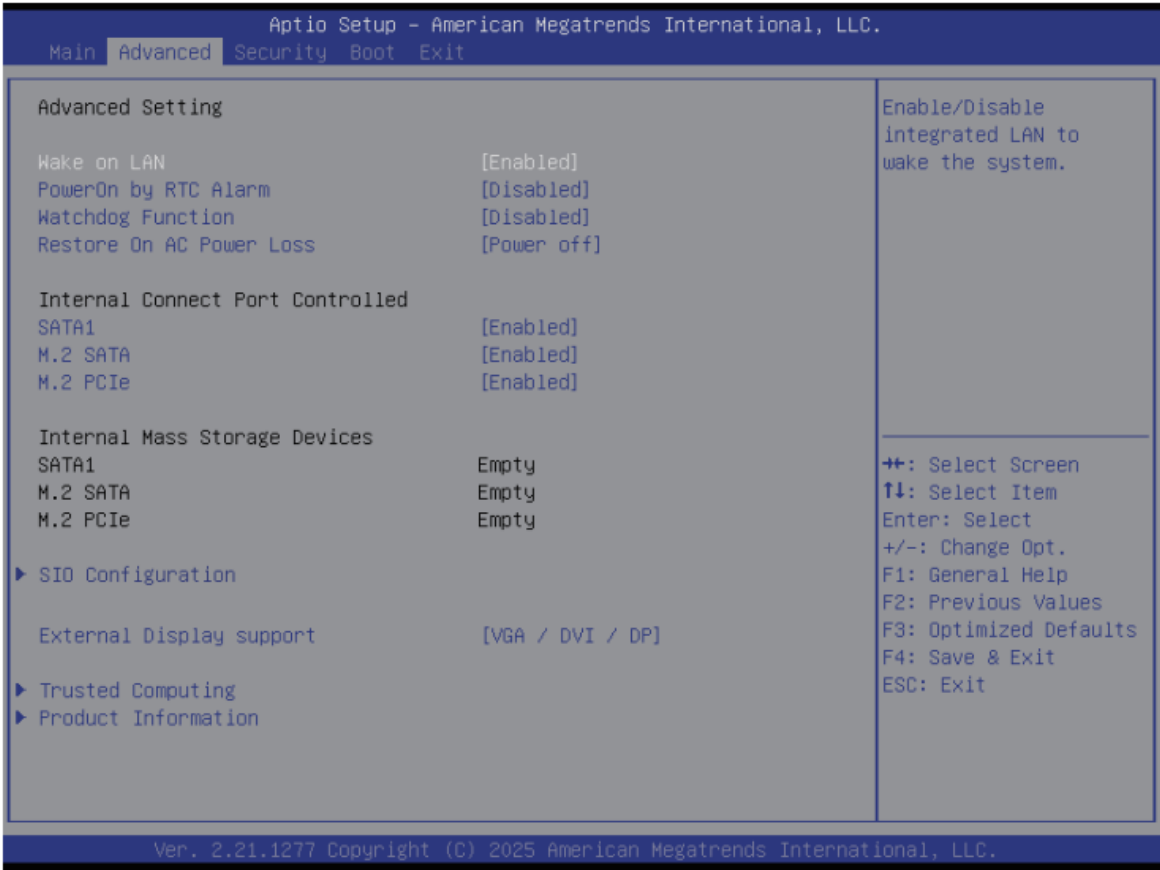


### System Time/System Date

Use this option to change the system time and date. Highlight System Time or System

Date using the <Arrow> keys. Enter new values through the keyboard. Press the <Tab> key or the <Arrow> keys to move between fields. The date must be entered in MM/DD/YY format. The time is entered in HH:MM:SS format.

Advanced Menu



Wake on LAN

Enable/Disable integrated LAN to wake the system.

PowerOn by RTC Alarm

Enable/Disable system wake on Alarm event. When enabled,the System will wake on the hr, mm, sec specified

Watchdog Function

Watchdog Function triggers on the Win OS.

Restore On AC Power Loss

Specify what state to go to when power is re-applied after a power failure (G3 state).

## SATA1/M.2 SATA/M.2 PCIE

Enable/Disable Connect port.

## SIO Configuration

Set SIO configuration.

## External Display support

Select Type for the External Display board.

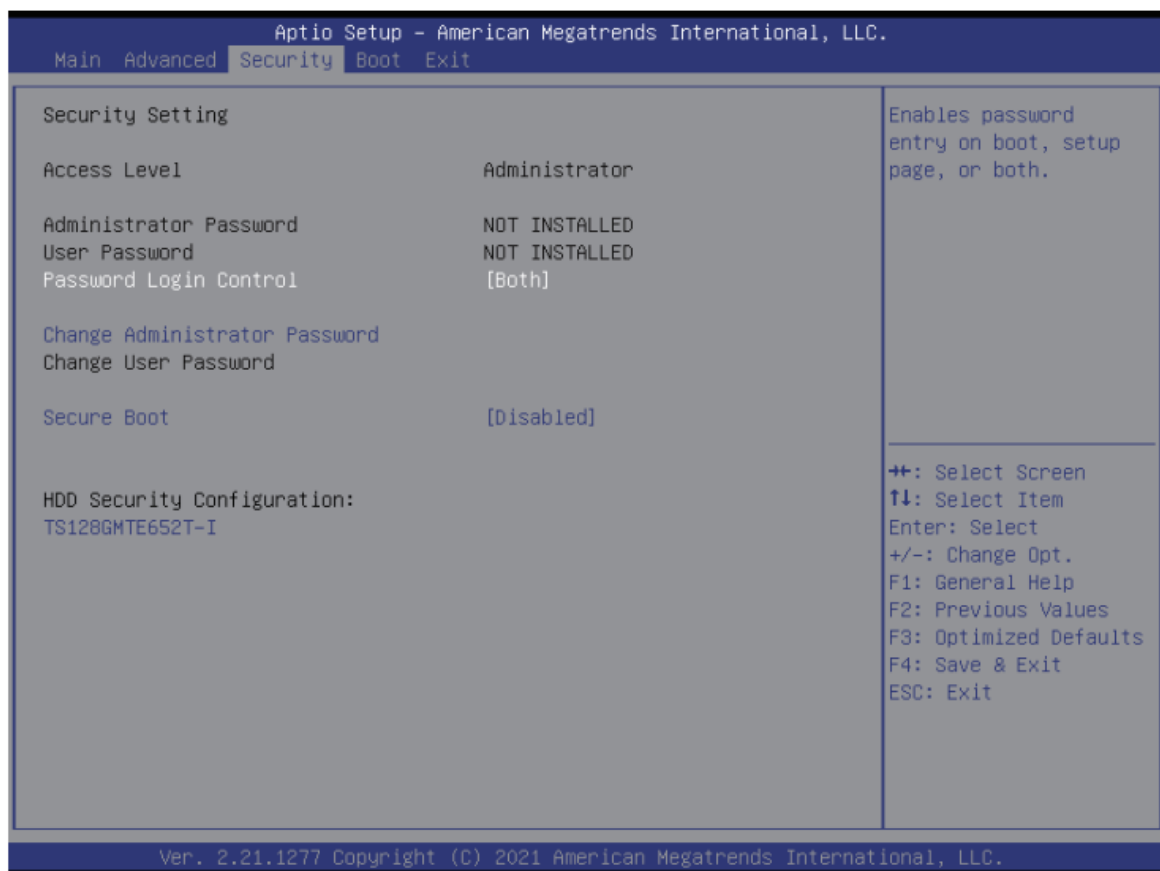
## Trusted Computing

Trusted Computing (TPM) setting

## Product Information

Allows you to insert the Serial Number and UUID

## Security Menu



## Password Login Control : [Setup / Boot / Both]

It's the timing for the password prompt. If the user chooses the setup, the system only

asks for the password when the user gets into the setup. If the user chooses the boot option, the system only asks for the password when booting.

## Change Administrator Password

It's the option for the administrator password.

## Change User Password

It's the option for the user password.

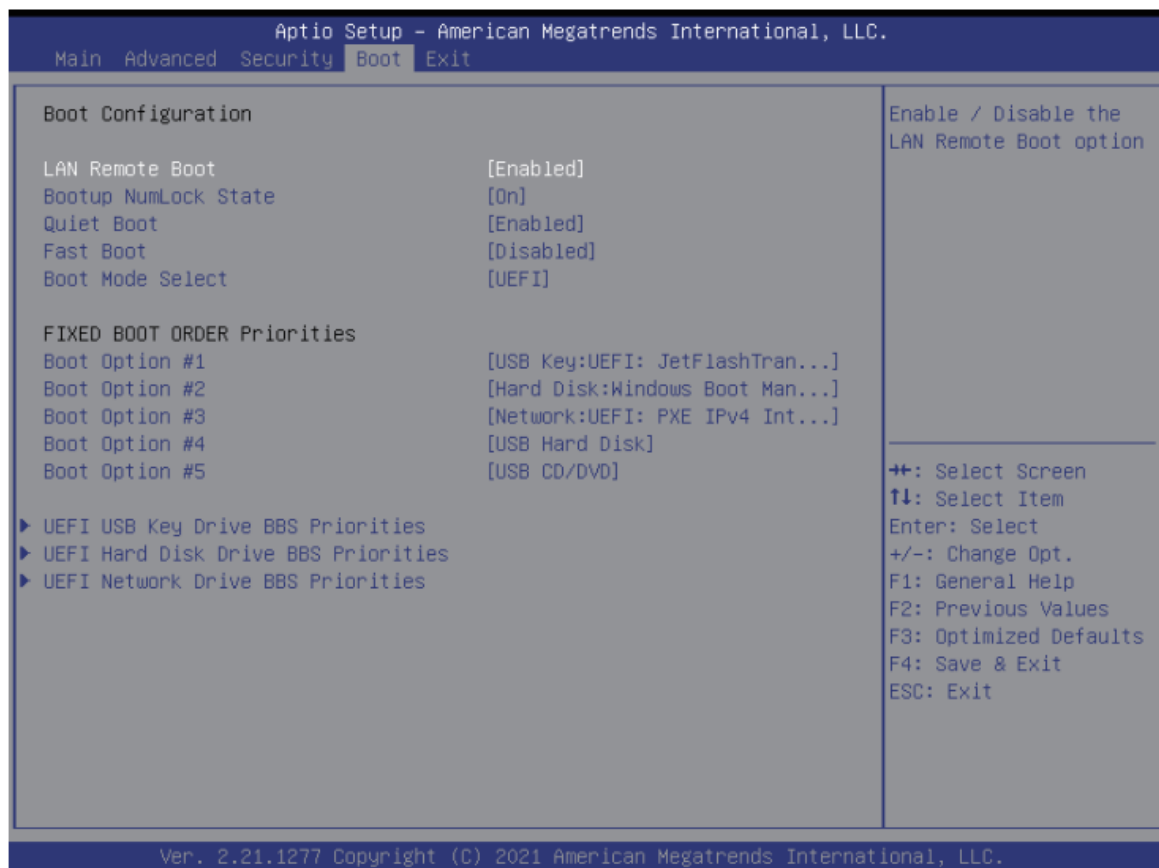
## Secure Boot

Enable / Disable the Secure Boot Support.

## Secure Boot Mode

Set the Secure Boot Mode status.

## Boot Menu



## LAN Remote Boot

Enable/Disable UEFI network stack.

## Bootup NumLock state

Select the keyboard NumLock state.

## Quiet Boot

Enables/disables Quiet Boot option.

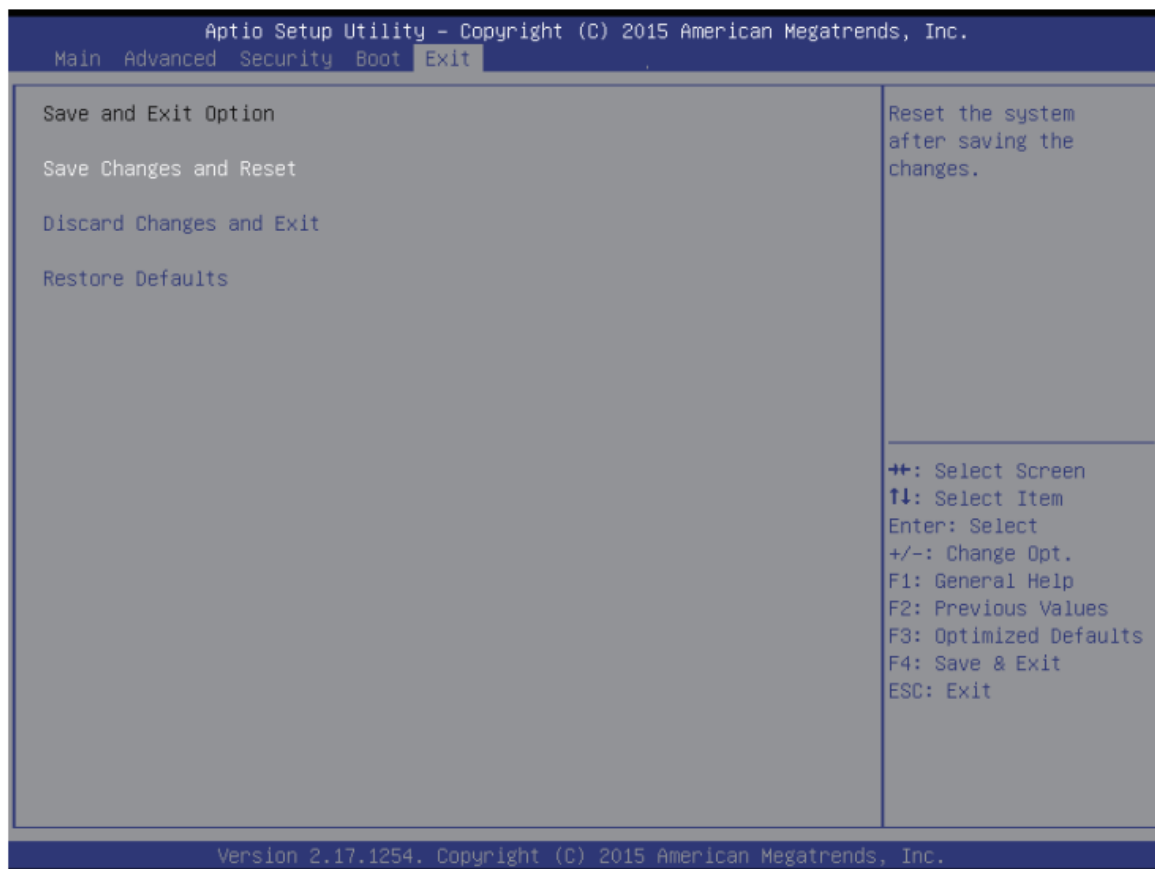
## Fast Boot

Enables/disables Fast Boot option.

## Boot mode select (WL series only)

The default setting is UEFI because secure boot enable.

## Exit Menu



## Documents / Resources

<div><div>BIOS User Manual</div><div>For the BIOS EL Series</div></div>	<div><a href="#">Shuttle BIOS EL Series Windows 10 Boot Menu [pdf]</a> User Manual</div> <div>BIOS EL Series Windows 10 Boot Menu, BIOS EL Series, Windows 10 Boot Menu, Boot Menu</div>
-------------------------------------------------------------------------	------------------------------------------------------------------------------------------------------------------------------------------------------------------------------------------

## References

- [User Manual](#)

BIOS EL Series, BIOS EL Series Windows 10 Boot Menu, Boot Menu, Shuttle, Windows 10 Boot

Shuttle Menu

—Previous Post

[Shuttle P55U 15.6 inch All in One PC User Manual](#)

Next Post—

[Shuttle SPCEL02 Rugged Industrial Computers User Guide](#)

## Leave a comment

Your email address will not be published. Required fields are marked \*

Comment \*

Name

Email

Website

☐ Save my name, email, and website in this browser for the next time I comment.

**Post Comment**

**Search:**

**Search**

[Manuals+](#) | [Upload](#) | [Deep Search](#) | [Privacy Policy](#) | [@manuals.plus](#) | [YouTube](#)

This website is an independent publication and is neither affiliated with nor endorsed by any of the trademark owners. The "Bluetooth®" word mark and logos are registered trademarks owned by Bluetooth SIG, Inc. The "Wi-Fi®" word mark and logos are registered trademarks owned by the Wi-Fi Alliance. Any use of these marks on this website does not imply any affiliation with or endorsement.