

[Skip to content](#)

## Manuals+

User Manuals Simplified.



# SHURE MVi Digital Audio Interface User Manual

[Home](#) » [Shure](#) » SHURE MVi Digital Audio Interface User Manual

Contents [hide](#)

[1 SHURE MVi Digital Audio Interface User Manual](#)

[2 MVi](#)

[3 General Description](#)

[4 Features](#)

[5 Overview](#)

[6 Quick Setup](#)

[7 Touch Panel Interface Controls](#)

[8 Volume Control Slider](#)

[9 ② LED bar](#)

[10 ③ Mute Button](#)

[11 ④ Mode Selector](#)

[12 ⑤ Headphone Volume Selector](#)

[13 Rear Panel](#)

[14 Headphone output \(3.5 mm\)](#)

[15 ② Microphone/Instrument Input](#)

[16 ③ Micro-USB Port](#)

[17 ④ Phantom Power Indicator](#)

[18 1/4" Instrument Input Monitoring](#)

[19 The MOTIV App](#)

[20 Device Setup](#)

[21 Preset Modes](#)

[22 Custom Presets](#)

[22.1 Advanced Mic Settings](#)

[22.2 Limiter](#)

[22.3 Compressor](#)

[22.4 Equalizer](#)

[22.5 Adjusting Microphone Level](#)

[22.6 Tips:](#)

[22.7 Adjusting Headphone Level](#)

[22.8 Accessing the Control Panel](#)

[22.8.1 PC](#)

[22.8.2 Mac](#)

[22.9 Input Meter Level](#)

[22.10 Monitoring with the MOTIV Device](#)

[22.11 Sampling Rate and Bit Depth](#)

[22.12 Troubleshooting](#)

[22.13 System Requirements](#)

[22.13.1 System Requirements and Compatibility: iOS](#)

[22.14 System Requirements and Compatibility: Android](#)

[22.15 System Requirements and Compatibility: Mac](#)

[22.16 System Requirements and Compatibility: Windows](#)

[22.17 Specifications](#)

[22.18 MFi Certified](#)

[22.18.1 Yes](#)

[22.19 DSP Modes \(Presets\)](#)

[22.19.1 Speech/Singing/Acoustic/Loud/Flat](#)

[22.20 Input](#)

[22.20.1 Combination XLR and 6.35 mm \(1/4"\) TRS](#)

[22.21 Input Impedance](#)

[22.21.1 1/4 inch instrument input > 1 MΩ](#)

[22.22 Bit Depth](#)

[22.22.1 16-bit/24-bit](#)

[22.23 Sampling Rate](#)

[22.23.1 44.1/48 kHz](#)

[22.24 Frequency Response](#)  
[22.24.1 20 Hz to 20,000 Hz \[1\]](#)  
[22.25 Adjustable Gain Range](#)  
[22.26 Maximum Input Level](#)  
[22.27 Power Requirements](#)  
[22.27.1 Powered through USB or Lightning connector](#)  
[22.28 Phantom Power](#)  
[22.28.1 +48V USB/+12V iOS](#)  
[22.29 Mute Switch Attenuation](#)  
[22.29.1 Yes](#)  
[22.30 Housing](#)  
[22.30.1 all metal construction](#)  
[22.31 Accessories](#)  
[22.31.1 Furnished Accessories](#)  
[22.32 Certifications](#)  
[22.32.1 Information to the user](#)  
[22.33 Read More About This Manual & Download PDF:](#)  
[22.34 Documents / Resources](#)  
[22.35 Related Posts](#)

## SHURE MVi Digital Audio Interface User Manual



### MVi

Digital Audio Interface

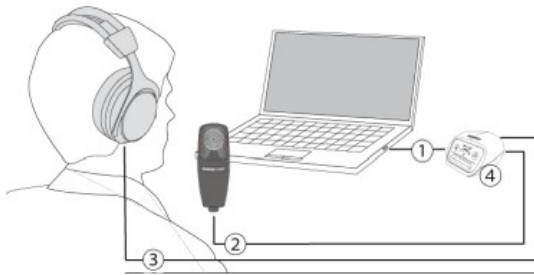
### General Description

The Shure MVi is a compact digital audio interface used to connect a microphone, guitar, or other instrument to a computer or mobile device. Audio and power are delivered through a single USB or Lightning connection to provide a simple and portable recording solution. The MVi headphone output delivers the microphone/instrument signal for real-time monitoring, in addition to audio from the computer for playback and overdubbing.

### Features

- Easily adjust settings with the intuitive touch panel interface
- Compatible with most iDevices (iPhone, iPad, and iPod) through Lightning interface
- Compatible with most computers, tablets and smart phones through USB interface
- Sleek design includes all-metal housing for professional-grade durability
- Headphone output allows real-time monitoring of the live signal and audio from the computer or device
- Preset DSP modes include equalization and compression settings for specific applications

### Overview



#### 1. USB connection

The MicroUSB port on the MV8i rear panel connects it to a computer or mobile device through a USB or Lightning connection. Both power and audio are passed through this connection.

#### 2. Microphone or Instrument A microphone, instrument, or line source plugs into the combo XLR-1/4" input.

#### 3. Headphone Monitoring

Connect headphones to hear real-time audio from the microphone and audio playback from the computer.

#### 4. Controls

The MV8i touch-panel provides control of microphone gain, headphone level, and recording mode selection.

### Quick Setup

The MV8i is compatible with most devices that have a USB or Lightning connector.

#### 1. Connect the MV8i to a computer or mobile device. Use the appropriate cable (USB or Lightning).

Drivers will be installed automatically. The touch panel illuminates to indicate a successful connection.

#### 2. The MV8i is automatically assigned as the active audio device.

If MV8i is not the selected audio device, open the sound control panel and select the Shure MV8i driver.

#### 3. Adjust the headphone volume on the MV8i device driver.

Open the Shure MV8i driver from the sound control panel and raise the headphone volume from the playback or output tab.

#### 4. Plug a microphone or instrument into the input on the rear panel.

The XLR/TRS combo input is compatible with microphones, guitars, instruments, and other line-level sources.

**Note:** Condenser microphones require phantom power to operate. To turn on phantom power, press and hold the mute button for 3 seconds. The PH

PWR LED on the rear panel illuminates when phantom power is activated.

**Caution:** Never activate phantom power if using a ribbon microphone, as this may cause damage to the microphone.

#### 5. Use the MODE button to select the preset mode that fits your application and adjust the microphone gain to suit the application.

If the audio is too quiet or causes distortion, adjust the gain manually. Refer to the "Adjusting Microphone Level" topic in this guide for more details.

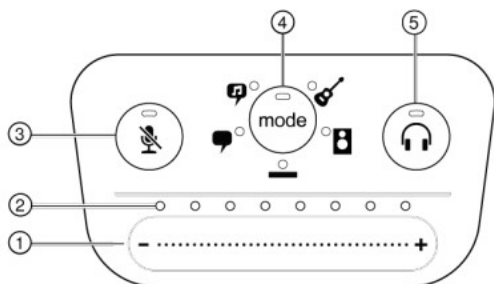
**Note:** When using the MV8i, you can monitor and listen to playback through the device headphone output.

#### 6. Plug in headphones to monitor the real-time audio and playback.

Pressing the headphone button changes to volume control slider to adjust the headphone volume (LEDs switch from green to orange when adjusting headphone volume).

**Note:** Do not use the gain adjustment to get more volume from the headphones.

### Touch Panel Interface Controls



### Touch Panel

#### Volume Control Slider

Adjust microphone or headphone level by sliding your finger across the control surface.

- Press the mode button to activate microphone
- Press the headphone button to activate headphone

## ② LED bar

Displays microphone and headphone level. The LED color indicates the level being displayed or adjusted.

- **Green:** Microphone level
- **Orange:** Headphone level

## ③ Mute Button

Press to mute and unmute the microphone.

## ④ Mode Selector

Press to select preset mode.

## ⑤ Headphone Volume Selector

Press to select headphone level controls (orange LED bar). Then use the volume control slider to adjust headphone level. Press again to return to microphone level display (green LED bar).

## Rear Panel

### Headphone output (3.5 mm)

Connect headphones to monitor audio.

### ② Microphone/Instrument Input

Accepts an XLR or 1/4" connection.

### ③ Micro-USB Port

Connects to a computer or mobile device with the appropriate cable.

### ④ Phantom Power Indicator

Illuminates when active (press and hold mute for 3 seconds to switch on/off).

## 1/4" Instrument Input Monitoring

The MVi features a combination XLR and 1/4" TRS input. When a 1/4" input is inserted to an MVi, input mode switches to Hi-Z (instrument) and only flat mode is available. The flat preset mode enables the input monitor to be turned on or off.

**Note:** When a 1/4" input is inserted no other preset modes are available and the Mode button toggles the input monitor on and off.

**Mode LED on:** Input monitoring is enabled

**Mode LED off:** Input monitoring is disabled

Use input monitoring when you want to hear the input signal as you record. If you want to hear the signal after it has been effected, turn off input monitoring and monitor through the recording device.

## The MOTIV App

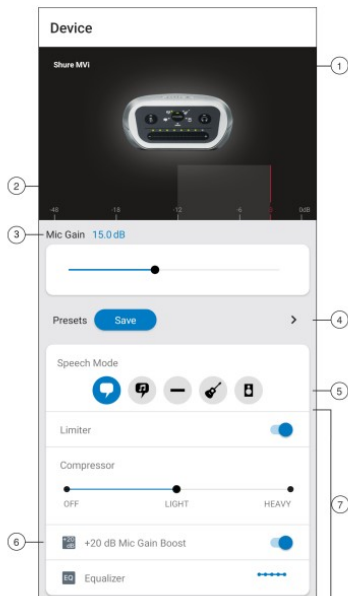
Use the MOTIV app to change device settings and to record, edit, and share audio. The MVi device stores the most recently used settings for quick setup each time you record.

**Tip:** Turn on Airplane Mode and Do Not Disturb to prevent interruptions to the recording caused by phone calls, text messages, or alerts.

## Device Setup



Tap Device on the navigation bar to access microphone settings



**Notifications** The top row displays which device is connected. A red flashing dot next to the name let you know whether recording is active. The charms show which advanced features are on. Tap the headphone icon to access direct monitoring control. Tap the lock to lock or unlock the settings.

**Note:** Lock the settings to prevent accidental changes to settings when handling your device during recording. When mic settings are Locked, the setting screen is grayed out.

- ② **Input Meter** Displays the strength of the input signal and whether that signal is mono or stereo. The loudest peaks should reach within the target range (indicated by the shaded region between -12 and -3 dB).
- ③ **Microphone Gain** Adjust the mic gain slider to set the volume of the sound source.
- ④ **Custom Presets** Tap the caret to quickly access your saved presets. Or tap the Save button to save current settings. See Custom Presets for more information.
- ⑤ **Preset Modes** Set stereo width, equalization, and compression for specific applications. See “Preset Modes” for more information.
- ⑥ **+20 dB Mic Gain Boost** Mic Gain Boost is useful for adding gain to microphones that tend to have a lower output, like dynamic microphones.
- ⑦ **Advanced Features** Fine tune your audio recording with limiter and compressor controls, and equalization settings.

## Preset Modes

Five selectable modes optimize settings for equalization and compression to fit your recording needs. Set the microphone level and select the preset mode that best fits your application. Or experiment with each of the modes to find which sounds best. Preset modes can affect the strength of the input signal, so adjust the microphone level as needed after changing presets.

Mode	Application	Characteristics
		
<b>Speech</b>		
	speech	Equalization that emphasizes clarity and fullness with gentle compression.
<b>Singing</b>		
	solo or group vocal performances	Subtle equalization to add richness and clarity for a natural sound.
<b>Flat</b>		
	any	An unprocessed signal (no equalization or compression settings used). Adds flexibility when processing the audio after recording.
<b>Acoustic</b>		
	acoustic instruments and quiet music	Light, transparent compression to smooth out volume spikes and bring out quiet passages. The equalizer setting emphasizes detail and an overall natural sound.
	live performance and louder sources	Equalization improves definition by reducing frequencies that can make the instrumentation sound crowded.

Mode	Application	Characteristics
------	-------------	-----------------

**Loud**

## Custom Presets

Create and save custom presets to quickly access frequently used mic settings.

1. Start with the preset mode that best suits your application
2. Adjust advanced settings, like compression, for clarity and
3. Tap Save to rename your preset, or use the default
4. Custom preset is added to your

To access saved presets:

1. Tap the caret (arrow) in the Preset row to view your list of saved
2. Tap custom preset and Apply Preset to instantly apply gain, stereo, equalization, and compression

**Tip:** You can save a custom preset at any point by tapping Save.

## Advanced Mic Settings

After you have selected the preset mode for your application, fine tune the sound of your recording with limiter, compressor, and equalizer controls. Your settings will be retained in the microphone when using other audio and video recording applications.

### Limiter

Toggle the limiter on to set an input threshold and prevent distortion from volume peaks in your recordings.

### Compressor

Choose no compression, or select light or heavy compression to control volume when your sound source is dynamic. The compressor will narrow the dynamic range, which means that quiet signals are boosted and loud signals are lowered.

### Equalizer

Change the preset modes to hear the DSP changes, and then use the equalizer to boost or cut bands of frequencies to improve sound clarity.

**Note:** Equalization within presets will not be displayed. However, the equalizer graphic in the advanced settings status bar displays the userselected equalization.



## Adjusting Microphone Level

Select the correct preset mode for your recording application. If you hear distortion or the audio is too low, adjust the microphone level in the audio or sound control panel of your computer or recording device.

### Tips:

Set the microphone level before adjusting headphone volume.

The headphone volume does not affect the signal level sent to the computer.

Use the volume slider on the front panel to adjust the microphone gain level.

**Note:** The microphone gain control is independent of the preset modes. Set your microphone level and experiment with dynamic processing options via the preset modes.

## Adjusting Headphone Level

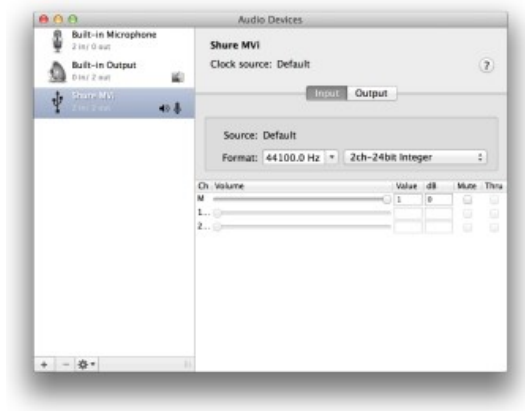
The headphone monitoring level is affected by the MVi device level and the computer settings level. Raise your computer volume up and easily adjust headphones through the MVi touch panel headphone control.

## Accessing the Control Panel

Open the sound control panel and select the Recording tab.  
Open the Shure MVi device.  
Under the Levels tab, adjust the volume using the slider.

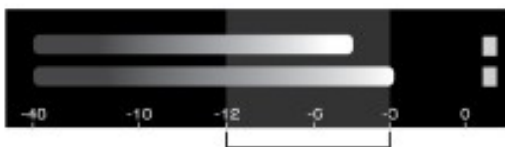
## Mac

Open the Audio Midi Settings panel. Select the Shure MVi device.  
Click on Input to adjust the gain using the slider.



## Input Meter Level

If your digital audio workstation or recording software has input meters, adjust the microphone level so it peaks between -12 and -6 dB. Otherwise, simply listen to the audio to make sure it is loud enough and not distorting.



## Peak Levels

## Monitoring with the MOTIV Device

The headphone output provides an equal blend of the direct microphone signal and audio playback from the computer. This allows you to conveniently adjust the overall headphone volume with one control on the device touch panel. To change the playback\ audio level relative to the direct microphone signal level, adjust the computer or DAW mixer settings.

Tip: When first connecting the microphone to your computer, make sure to raise the volume level in the sound control panel of the computer for a strong audio signal. Then adjust headphone level on the device for comfortable monitoring.

## Sampling Rate and Bit Depth

Sample Rate and Bit Depth settings are found in a drop down menu in the audio or sound control panel of your computer. You can adjust these variables to fit your needs. Select a lower sample rate for podcast recording, when it is important to have a smaller file for easy download. Select a higher sample rate for music and more dynamic recordings.

Tip: Record at a higher sample rate and bounce down to an M4A for a file with the highest sound quality at a manageable size.

Tip for PC users: Make sure that the sample rate and bit depth microphone settings, found in the sound control panel of the computer, match with the sample rate and bit depth selected in your software.

## Troubleshooting



Issue	Solution
<b>The display does not illuminate</b>	Make sure that the MVi is fully plugged in.
<b>Audio is too low</b>	Check the computer sound control panel settings. When first connecting the MVi to your computer, make sure to raise the computer volume level.
<b>Audio sounds bad</b>	Check the sound control panel of the computer to ensure that the MVi is fully plugged in and recognized.
<b>Issue</b>	<b>Solution</b>
<b>Audio is distorted</b>	Use the audio meter to ensure that volume peaks are within the target range. If level is reaching the red peak indicator of the input meter, turn the gain down.
<b>Audio sounds unnatural or jittery</b>	Make sure that the sample rate and bit depth microphone settings, found in the sound control panel of the computer, are consistent with the sample rate and bit depth selected in your software.
<b>Device not working with USB hub.</b>	The MVi requires 250 mA per port. Check USB hub documentation for current/port specification.

## System Requirements

### System Requirements and Compatibility: iOS

- **iOS:** iOS 14 and higher
- **iPhone:** iPhone 6s and higher
- **iPod Touch:** 7th gen
- **iPad:** iPad 5th gen and higher
- **iPad Mini:** iPad Mini 4th gen and higher

### System Requirements and Compatibility: Android

Will work with any Android device that has:

- Android Pie 0 and higher
- USB Host Power Requirement of  $\geq 100$  mA
- USB Audio Class 1 support and higher

Android is a trademark of Google Inc.

**Note:** See <https://www.shure.com/MOTIVcompatibility> for information on supportive Android devices.

### System Requirements and Compatibility: Mac

- MacOS 13 to 10.15
- 64 bit
- Minimum 2 GB of RAM
- Minimum 500 MB of hard disk space

### System Requirements and Compatibility: Windows

- Windows 10
- 64 bit
- Minimum 2 GB of RAM

Minimum 500 MB of hard disk space

## Specifications

### MF i Certified

Yes

DSP Modes (Presets)

Speech/Singing/Acoustic/Loud/Flat

Input

Combination XLR and 6.35 mm (1/4") TRS

Input Impedance

1/4 inch instrument input>1 MΩ

Bit Depth

16-bit/24-bit

Sampling Rate

44.1/48 kHz

Frequency Response

20 Hz to 20,000 Hz [1]

Adjustable Gain Range

3-pin XLR	0 to +36 dB
6.35 mm (1/4") TRS	+9 dB

Maximum Input Level

3-pin XLR	0 dBV [1]
6.35 mm (1/4") TRS	+9 dBV [1]

Power Requirements

Powered through USB or Lightning connector

Phantom Power

+48V USB/+12V iOS

Mute Switch Attenuation

Yes

Housing

all metal construction

Accessories

Furnished Accessories

1 m USB cable	AMV-USB
---------------	---------

1 m USB-C cable	95C38076
-----------------	----------

Certifications

## Information to the user

This device complies with part 15 of the FCC Rules. Operation is subject to the following two conditions:

1. This device may not cause harmful
2. This device must accept any interference received, including interference that may cause undesired

**Note:** This equipment has been tested and found to comply with the limits for a Class B digital device, pursuant to part 15 of the FCC Rules. These limits are designed to provide reasonable protection against harmful interference in a residential installation. This equipment generates uses and can radiate radio frequency energy and, if not installed and used in accordance with the instructions, may cause harmful interference to radio communications. However, there is no guarantee that interference will not occur in a particular installation. If this equipment does cause harmful interference to radio or television reception, which can be determined by turning the equipment off and on, the user is encouraged to try to correct the interference by one or more of the following measures:

- Reorient or relocate the receiving
- Increase the separation between the equipment and the
- Connect the equipment to an outlet on a circuit different from that to which the receiver is
- Consult the dealer or an experienced radio/TV technician for

## Industry Canada ICES-003 Compliance Label: CAN ICES-3 (B)/NMB-3(B)

**Note:** Testing is based on the use of supplied and recommended cable types. The use of other than shielded (screened) cable types may degrade EMC performance.

This product meets the Essential Requirements of all relevant European directives and is eligible for CE marking. The CE Declaration of Conformity can be obtained from: [www.shure.com/europe/compliance](http://www.shure.com/europe/compliance)

Authorized European representative: Shure Europe GmbH

## Global Compliance

Jakob-Dieffenbacher-Str. 12 75031 Eppingen, Germany

Phone: +49-7262-92 49 0

Email: [info@shure.de](mailto:info@shure.de) [www.shure.com](http://www.shure.com)



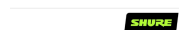
Use of the Made for Apple badge means that an accessory has been designed to connect specifically to the Apple product(s) identified in the badge and has been certified by the developer to meet Apple performance standards. Apple is not responsible for the operation of this device or its compliance with safety and regulatory standards.

Apple, iPad, iPhone, iPod and Lightning are trademarks of Apple Inc., registered in the U.S. and other countries. tvOS is a trademark of Apple Inc. The trademark "iPhone" is used in Japan with a license from iPhone K.K.

Mac and Lightning are registered trademarks of Apple Inc.

## Read More About This Manual & Download PDF:

## Documents / Resources



[SHURE MV1 Digital Audio Interface](#) [pdf] User Manual

MV1, Digital Audio Interface, MV1 Digital Audio Interface, Audio Interface, Interface

## Manuals+,

- [home](#)
- [privacy](#)