



SHOWVEN Sparkular Fall User Manual

[Home](#) » [Showven](#) » SHOWVEN Sparkular Fall User Manual

Contents [[hide](#)]

- 1 SHOWVEN Sparkular Fall
- 2 Safety Considerations
- 3 Operating Panel:
 - 3.1 Light emitting diode display area
 - 3.2 Bottom Indication Light
 - 3.3 Control button area
 - 3.4 Radio frequency identification area
- 4 Interface
- 5 Error informations display table
 - 5.1 Setting interface:
 - 5.2 Advanced menu
- 6 Use:
- 7 Wireless remote control mode
 - 7.1 Attention
 - 7.2 Wireless host Sparkular Fall mode (requires communication cables):
- 8 Warranty Instructions
- 9 Documents / Resources
 - 9.1 References
- 10 Related Posts

SHOWVEN®

SHOWVEN Sparkular Fall



Safety Considerations

- Never touch the nozzle of SPARKULAR TRIPLE, danger of getting burnt.
- Never touch the sparks which shooting out from the nozzle.
- Unauthorized repair are prohibited, it may cause serious incident.
- Keep SPARKULAR FALL dry and do NOT use in rain or snow.
- Make sure lid of feeding hopper are well covered when use Sparkular Fall. Accidentally Burning of Composite Ti can only use sands to extinguish. Composite Ti should keep away from moisture and stored in a dry sealed environment.
- Keep audience and flammable material at a minimum distance of 3m from SPARKULAR FALL and it's drop sparks. Make sure sparks shoot out from Sparkular FALL can NOT touch any objects.
- Ensure that children, animals and unauthorized persons don't have access to the SPARKULAR FALL.
- Clear material for Sparkular Fall is necessary both before the show and after the show, to clear the Composite Ti remains in the pipe. Check whether there are Composite Ti aggregate in the nozzle after each show, if any, please clean it up, or it will affect the shooting effect or even damage Sparkular Fall.
- The Sparkular FALL power supply cable (sparkular fall power supply EX-cable) maximum allowed cascade for Sparkular Fall is 6pcs (BT04)/ 3pcs (BT05), exceeded connecting may result in damage or even cause fire.
- For better heat dissipation, block the air intake and air outlet is prohibited.
- Cover of nozzle of Sparkular Fall is prohibited.

Sparkular Fall Model No.BT04/BT05

	Parameter	
	Dimension	192×208×192mm
	Weight	6kg

Input	200-240VAC, 50/60Hz (BT04) 100-120VAC, 50/60Hz (BT05)
Working Power	400w
Working Temperature	-10°C~ 50 °C
Casing	Anti-Flaming ABS
Fountain Height	2m ~ 7m Depend on different type of Composite Ti
Interface	Double DMX input interfaces, Double AC power interfaces
Hopper capacity	280g
Hanger Diam	40-60mm

Operating Panel:



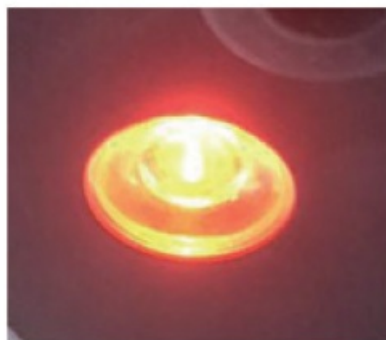
LCD information display area, showing operate menu and working status of machine.

Light emitting diode display area



READY After turning on machine, it will automatically preheat around 5 minutes, when the "READY" green light turns from flashing into long on, indicates that the machine is ready to work
DMX Flashing shows that DMX signal is connected, otherwise is without signal
FAULT When any malfunction, the light turns on
HEAT When the machine is heating, signal light turns on.

Bottom Indication Light



Off Sparking or Not in preheating
Quick Flashing Preheating
Long on Preheated
Slow Flashing Error warning

Control button area



MENU Short press to switch interface, press for 3 seconds can switch to the advanced setup interface.

- Parameters down

+ Parameters up.

ENTER Confirm and save parameters.

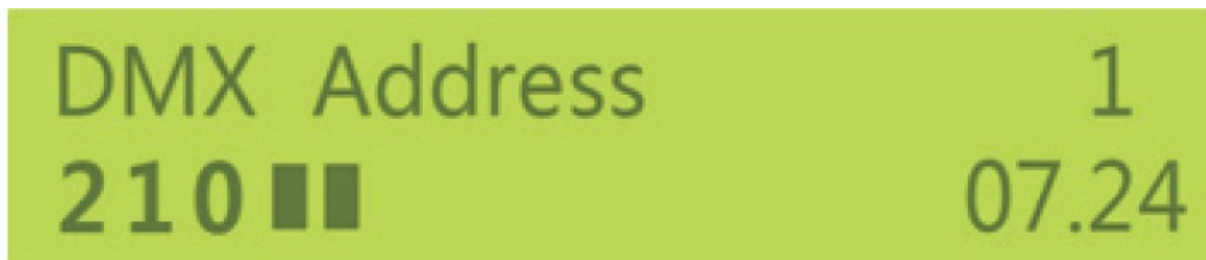
Radio frequency identification area



- Composite Ti with RFID card, swiping cards used to identify parameters and types of granules.
- Please note that granules RFID card can increase the single machine specific working time. The card is disposable, one card can only use one time.

Interface

Main interface



First line Display DMX address is “1”.

Second line: Display the present inner core temperature and the temperature progress bar; displays remaining time is 7 minutes and 24 seconds.

Error informations display table

Error Informations	Explanation
E0 System IC	System error.
E2 Temp. Sensor	Temperature sensor was damaged.
E3 P Temp. Over	Chassis temperature is too high to shut down.
E4 Time Remain	Insufficient granules or remaining time, please swiping time card.
E5 K Temp. Over	Inner core temperature is too high to shut down
E6 Heat Fail	Heating failed.

Setting interface:

Press “MENU” to enter the Setting interface, press the “MENU” button to enter different options until you return to the main interface.

Options	Range	Explanation
Set DMX Address	1-512	Set the DMX address,machine become a wireless host and can send out DM X signal when its address is “1++”.
Wireless Control	ON/OFF	Wireless function switch,you can match code when shows “ON”
Manual Fountain	ON/OFF	Manual fountain switch , for testing purpose only.

Advanced menu

Press “MENU” 3 seconds to enter the advanced setup interface, press MENU key to enter different options, press MENU till 3 seconds to return to the main interface.

Options	Range	Explanation
Set Temperature	500-610	Setup inner Core temperature.
Auto Heat	ON/OFF	Auto preheat function switch after turning on machine.
Density	70-100	Adjust the sparks density.
Mode Selection	Factory Mode/User Mode	Factory Mode is factory debugging mode, User Mode is using mode.
Default Parameter		Press "ENTER" to restore all parameters to the factory settings.

Use:

Power cable connection:

- For convenient use, there are power supply cable and power supply ex-cable. Power Supply ex-cable can achieve multiple devices connected, maximum cascade is 6pcs(BT04)/3pcs(BT05). All power plugs are industrial plug with lock, it need to toggle snap and rotate when using.

Host controller mode

Using the host controller to monitor the working status of Sparkular Fall to achieve multiple dynamic effects and stable controlling. Sparkular Fall has high/low level the height settings 1-5 in host controller is low level,6-10 is high level. Please see the details in host controller manual.



Cable DMX mode

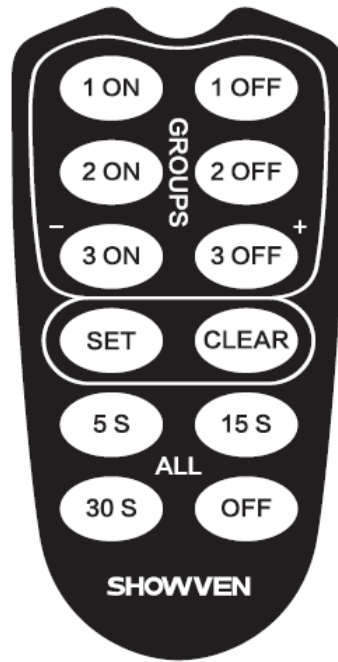
When using the DMX controller, the system takes 2 channels

The First channel	Functions
0-15	Fountain OFF
16-135	Low Level Fountain ON
136-255	High Level Fountain ON
The second channel	Functions
60-80	Clear Material
20-40	Emergency Stop
0-10	Pre-heat OFF Disable in Auto-heat
240-255	Pre-heat ON Disable in Auto-heat

Wireless remote control mode

- If the remote control cannot work, please check whether wireless function was turn on. Press MENU to switch to wireless control setting , menu is set to “ON” , press “ENTER”. In this interface, you can also match code with remote controller.
- Sparkular Fall can controlled by both DMX and remote controller, when there are DMX signal input, wireless remote controller will not work.
- When using remote controller you need to pull out the antenna.
-
-

- After pressing “set” button, press “3 on” button immediately to change to low level press “3 off” to change to high level.



1 ON	Address “1” ON	1 OFF	Address “1” OFF
2 ON	Address “3” ON	2 OFF	Address “3” OFF
3 ON	Address “5” ON Low Level	3 OFF	Address “5” OFF High Level
Set	<ul style="list-style-type: none"> ◆ When use different remote controller ◆ Change Levels 	CLEAR	<ul style="list-style-type: none"> ◆ Automatically clean material for 3 seconds ◆ Start Pre-heat
5 S	All Starts 5 seconds	15 S	All Starts 15 seconds
30 S	All Starts 30 seconds	OFF	All stop

Attention

- The first group machines correspond to DMX address “1”, the second group DMX address is “3”, the third DMX address is “5”, remote controller controls 3 groups of machines. You can also set all Sparkular Fall address as “1”.
- When the lamp is not lit or becomes weak on the remote controller, please replace the battery. It is better to take battery out when transporting to prevent consumption of battery power by unmeant press of button.
Battery model 12V 23A
- When the machine is occasionally not working, may be caused by interference, please press the start button again.

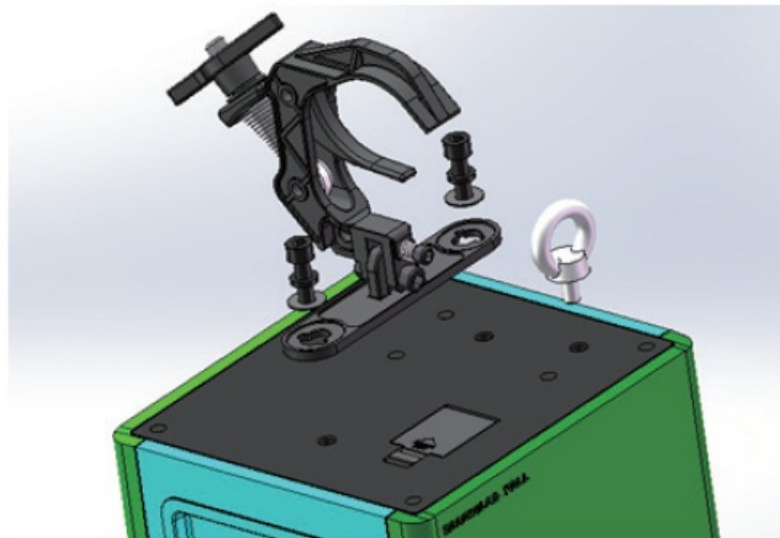
- Wireless control is easily influenced by interference, it suggests to stay as close to machine as possible when use remote controller, and machines cannot use metal shielding.

Wireless host Sparkular Fall mode (requires communication cables):

In occasion of strong interference, using the wireless host can avoid interference, ensure stable control. Enter into Set DMX Address option menu,press “-”when the DMX address is “1”to set the first unit of Sparkular Fall’s DMX address into “1++”, this machine address is “1”, but it can also output DMX signal and turns into wireless host Sparkular Fall. Use communication cables to connect all the Sparkular Fall, the host Sparkular Fall will receive the signal from remote controller and transfer to all other Sparkular Fall via communication cables to realize stable signal transmission.

Attention: In this mode, please don’t connect to other control mode to prevent from communication disorder.

Hanger and Lifting Ring installation Method



Consumptive Material Type Options Instruction

HC8200	Fall length (Low Level)	Fall length (High Level)
MEDIUM	2m	3m
LARGE	3m	4m
LARGE-I	4m	5m
LARGE-II	5m	7m

Warranty Instructions

- Sincere thanks for your choosing our products, you will receive quality service from us.


- The product warranty period is one year. If there is any quality problems, we can exchange a brand new same model machine to you within seven days after receiving the product.
- We will offer free of charge maintenance service for machines which with hardware malfunction (except for the instrument damage caused by human factors) in warranty period. Please don't repair machine without factory permission.
- Below situations NOT included in warranty service:
 - Damage caused by improper transportation, usage, management, and maintenance, or damage caused by human factors;
 - Disassemble, modify or repair products without Showven's permission;
 - Damage caused by external reasons (lightning strike, power supply etc.);
 - Damage caused by improper installation or use;
- For product damage not included in warranty range, we can provide paid service. Invoice and warranty card are necessary when asking for maintenance service from SHOWVEN.

Warranty card

Product Name		Serial NO .	
Purchase Date:			
Contact Number:			
Address:			
Customer Feedback Information:			
Actual malfunction:			
Maintenance details:			
Maintenance person:		Maintenance Date:	

SHOWVEN®

Documents / Resources

 <p>SPARKULAR FALL USER MANUAL V1.1</p> <p>SHOWVEN</p> <p>Sparkular Fall V1.1</p> <p>Showven Technologies Co., Ltd.</p>	<p>SHOWVEN Sparkular Fall [pdf] User Manual Sparkular Fall V1.1</p>
--	---

References

-  [Founder of Sparkular, Sparkular Machine Maker | Showven](#)