

**SHOWVEN**

**FXbutton Compact  
DMX Console**



# SHOWVEN FXbutton Compact DMX Console User Manual

[Home](#) » [Showven](#) » SHOWVEN FXbutton Compact DMX Console User Manual 

## Contents

- 1 [SHOWVEN FXbutton Compact DMX Console](#)
- 2 [Product Description](#)
- 3 [Features](#)
- 4 [Technical Specifications](#)
- 5 [Safety Considerations](#)
- 6 [Structure of FXbutton](#)
- 7 [Interface and Menu](#)
- 8 [Operation Guide](#)
- 9 [Device Lib Download Operation](#)
- 10 [Battery Installation](#)
- 11 [Contact](#)
- 12 [Documents / Resources](#)
  - 12.1 [References](#)

# SHOWVEN

## SHOWVEN FXbutton Compact DMX Console



### Technical Specifications

- **DIMENSION:** 165 x 165 x 90mm
- **WEIGHT:** 1.5kg
- **VOLTAGE:** AC100-240V, 50/60Hz
- **WORK POWER:** 10W
- **WORK TEMP.:** -20°C to 50°C
- **INTERFACE:** 3-pin and 5-pin XLR OUT, File download port
- **BATTERY:** 2\*18650 cells (customer buy it locally), standby 16h (3500mAH battery)
- **SAFETY SWITCH:** YES
- **PACKAGE:** durable suitcase

### Product Description

The FXbutton is a compact DMX console designed for party, DJ, etc. applications. It features multiple DMX device support, timer function, built-in battery, preset firing modes, and easy operation.

### Safety Considerations

1. Keep FXbutton dry and do NOT use in rain or snow.
2. Pull out power plug during a thunderstorm or prolonged non-use.
3. If liquid spills on the machine, power off immediately and clean it.
4. Unauthorized repairs are prohibited as they may damage the machine.

### Structure of FXbutton

1. Button and Screen
2. DMX Arm switch
3. Power ON/OFF

4. AC Input indicator light
5. AC Input
6. DMX 5-PIN OUT
7. DMX 3-PIN OUT
8. Download port for software update

## Interface and Menu

1. Main interface
2. Setting Menu

Options	Range	Default	Explanation
Duration Interval	0-300s (0 is JOG) 0-300s	0-300s	Firing duration. When duration time is 0 (JOG), hold button firing, release to stop.
Timer	10-999s	—	DMX output interval. For cycle mode please set interval 0.
—	—	—	Set the feeding consumable consumption time, machine will count down 60s automatically, the timer circle displays on main screen show the remaining percentage.
Device No.	1 – 36	6	This item will hide under Sync firing mode.
Mode	, —>,	—	—

Thanks for choosing SHOWVEN® FXbutton, we wish it will bring you lots of exciting moments. Please read the following manual carefully before operating this product.

## Product Description

The FXbutton is the most compact DMX console available on market, it is designed to be a simple and easy-to-use console for party, DJ etc. applications. All settings can be finished with an infinite rotary button simply yet efficiently.

## Features

- Compact size, powerful functions
- Support multiple DMX device and effects setting
- Timer function to tracking the consumable remains
- Built-in battery design
- 5 preset firing modes
- JOG or timing trigger, and can also work with cycle mode.
- Aluminum housing
- Durable suitcase package
- Easy to use

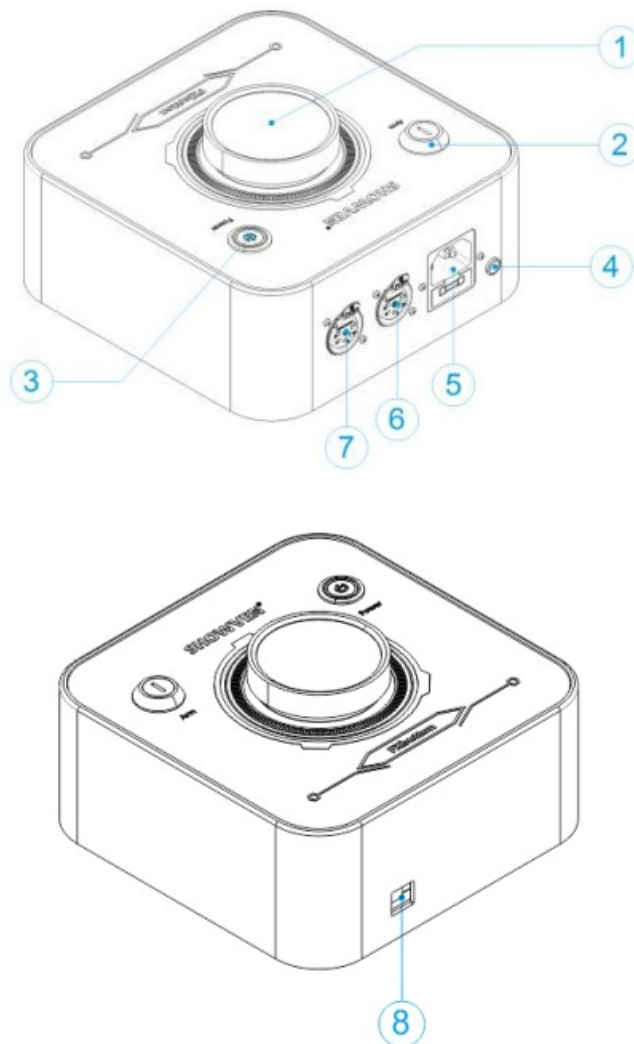
## Technical Specifications

- DIMENSION: 16516590mm
- WEIGHT: 1.5kg
- VOLTAGE: AC100-240V, 50/60Hz
- WORK POWER: 10W
- WORK TEMP.: -20~50
- INTERFACE: 3-pin and 5-pin XLR OUT, File download port
- BATTERY: 2\*18650 cells (customer buy it locally), standby 16h (3500 battery).
- SAFETY SWITCH: YES
- PACKAGE: durable suitcase

## Safety Considerations

1. Keep FXbutton dry and do NOT use in rain or snow.
2. Pull out power plug during a thunderstorm or not use for a long time.
3. If any liquid is spilled on this machine, please power off immediately and clean it.
4. Unauthorized repair are prohibited, it may damage the machine

## Structure of FXbutton



1. Button and Screen
2. DMX Arm switch
3. Power ON/OFF (the indicator light blinking when DMX armed)
4. AC Input indicator light
5. AC Input
6. DMX 5-PIN OUT (pin4 with 5V output to charge wireless DMX transmitter)
7. DMX 3-PIN OUT
8. Download port for software update

## Interface and Menu

### Main interface



1. Timer Circle: Indicate the remaining consumables left based on the setting time
2. FXbutton Battery Volume
3. DMX Arm status. If shows “ARMED” here means machine enabled.
4. Device types
5. Effects
6. Duration
7. Interval
8. Device No.: device quantity. (shows DMX address range under custom device mode)
9. Firing mode rules (sync, center to ends, ends to center, right to left, left to right)

### NOTE:

Menu switch disabled when DMX armed. Switch Arm key under setting menu, FXbutton will switch to main interface automatically.

### Setting Menu

Parameters in main menu show in below table, press “UP”/ “DOWN” to change the value, please remember to press “SAVE” to save the setting.

Options	Range	Default	Explanation
Duration	0-300s(0 is JOG)	0s	Firing duration. when duration time is 0 (JOG), hold button firing, release to stop.
Interval	0-300s	0s	DMX output interval. For cycle mode please set interval 0.
Timer	10-999s	60s	Set the feeding consumable consumption time, machine will count down automatically, the timer circle displays on main screen show the remaining percentage.
Device No.	1 -36	6	This item will hide under Sync firing mode
Mode	, --->, <---, <--->, --> <--		Except sync mode, please allocate a unique DMX address for each unit of FX device and set the Device No.

Device	Custom / uFlamar 2CH-N / SPARKULAR 2CH / CIRCLEFLAMER 6CH / SONICBOOM 11CH	SPARKULAR 2CH	Select different device or custom effects
Effect	0-100	0	Effect select such as sequence list of CIRCLE FLAMER
Start Addr	1-512	1	Start address. Enable only in custom effects
End Addr	1-512	2	End address. Enable only in custom effects
DMX value	1-255	255	DMX value from start address to end address. Enable only in custom effects
Safety Channel	1-512	512	Safety channel. Enable only in custom effects
Safety Value	0-255	255	Safety channel value, Enable only in custom effects

## Operation Guide

1. Press the Power button to turn on FXbutton. The indicator light on power button will blink three times.
2. Rotate the button clockwise or anti-clockwise to enter a different setting menu interface.
3. In the related setting menu, press the button to enter the editing mode (the edited value is red), turn the button clockwise/anti-clockwise to change the value in the editing interface (slow rotation adds or subtracts 1 each time, fast rotation adds or subtracts 5 each time), press the button again to save the value and return to the setting interface.
4. Rotate the button can switch back to main interface.
5. After setting finished, switch the DMX Arm key to armed status (power indicator light flash).
6. Press the button to firing. It will firing automatically according to the settings, and also shows the countdown time, if press the button again during firing, DMX output stops. If duration is 0, press and hold the button to firing, release to stop.

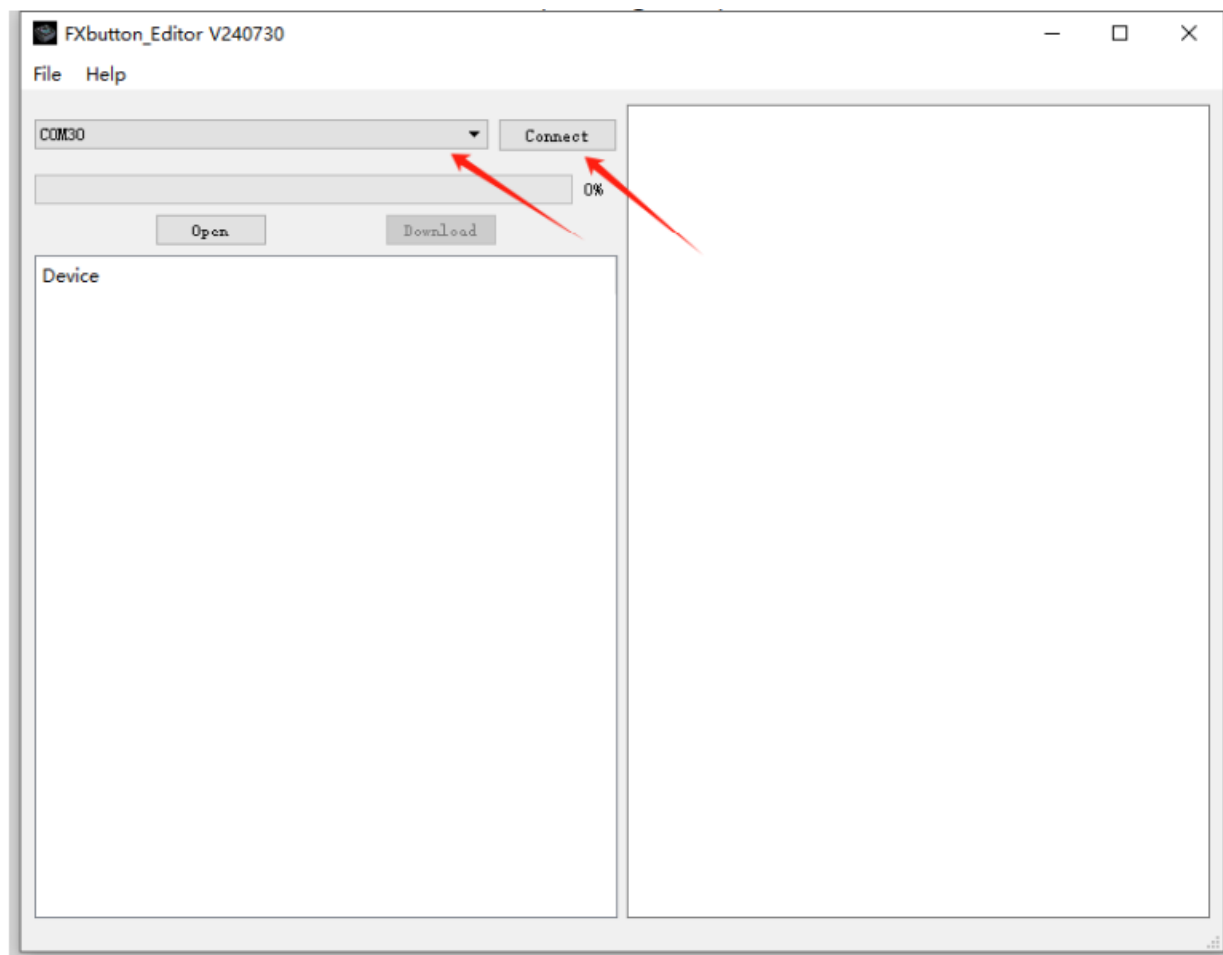
## NOTE:

When using a non-custom device, the DMX device address needs to be set to 1, or calculated according to the number of channels. Except sync mode, please allocate a unique DMX address for each unit of FX device

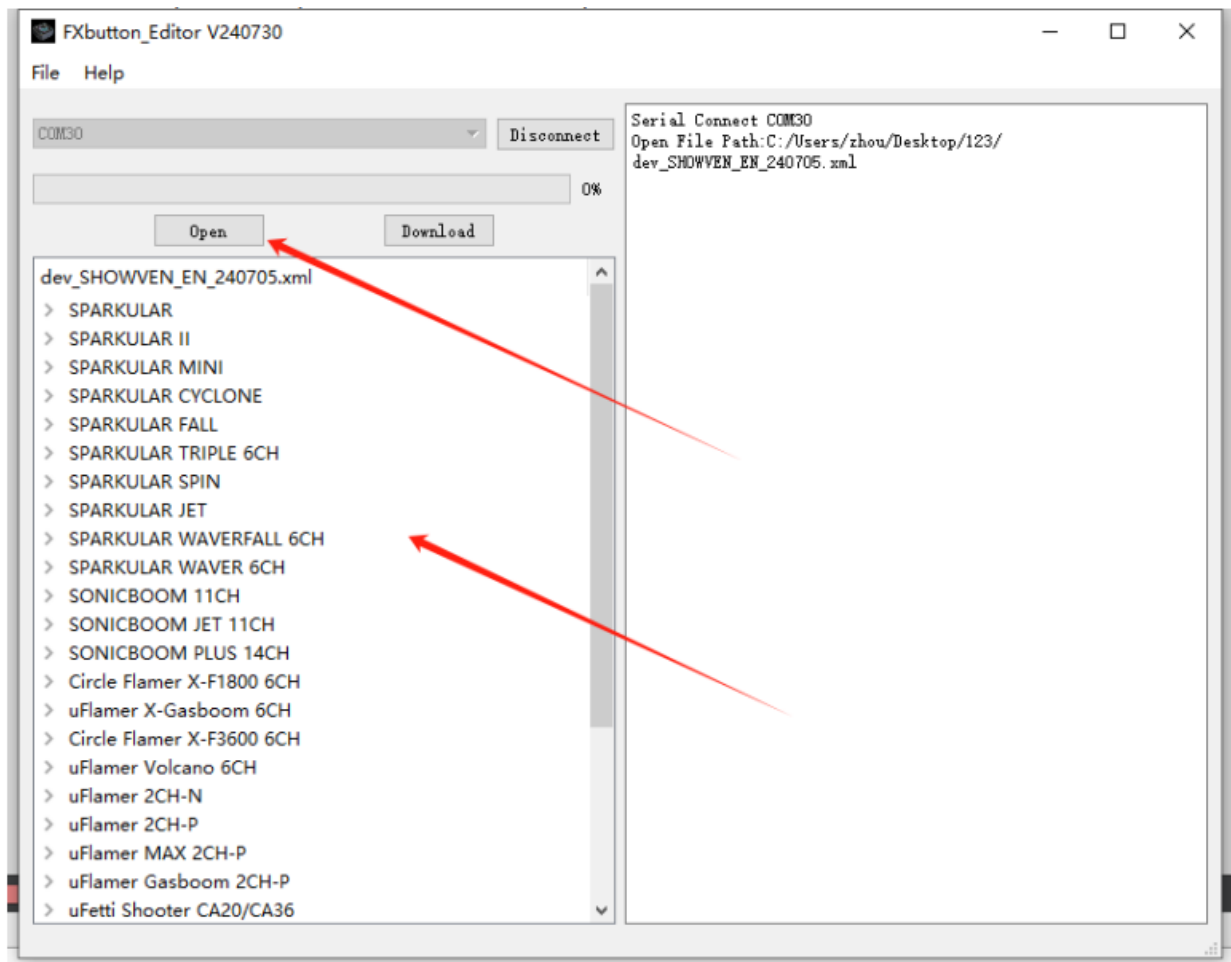
## Device Lib Download Operation

In the new version FXbutton (delivery time from SHOWVEN factory after 23th July 2024), FXbutton with a new function that is to edit your own device lab with FXbutton\_Editor software. The operations are as below:

1. Power on FXbutton, connect FXbutton and computer with download cable. Open FXbutton\_Editor software find corresponding com port, click "connect".

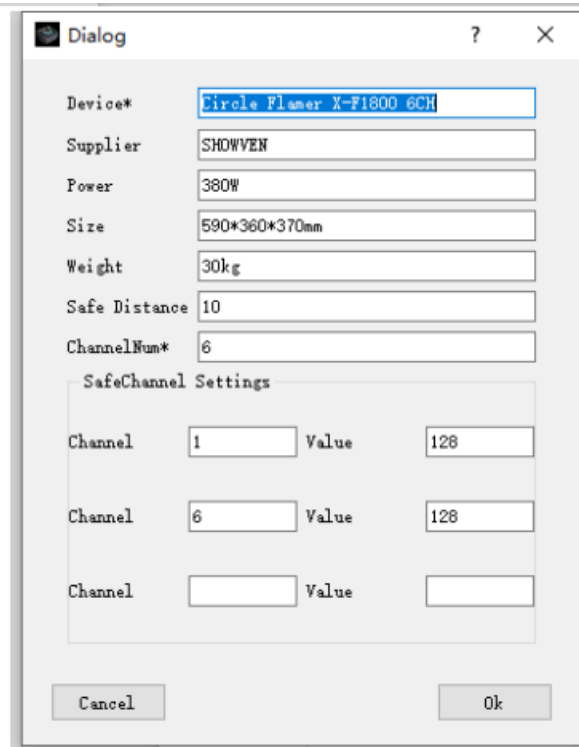
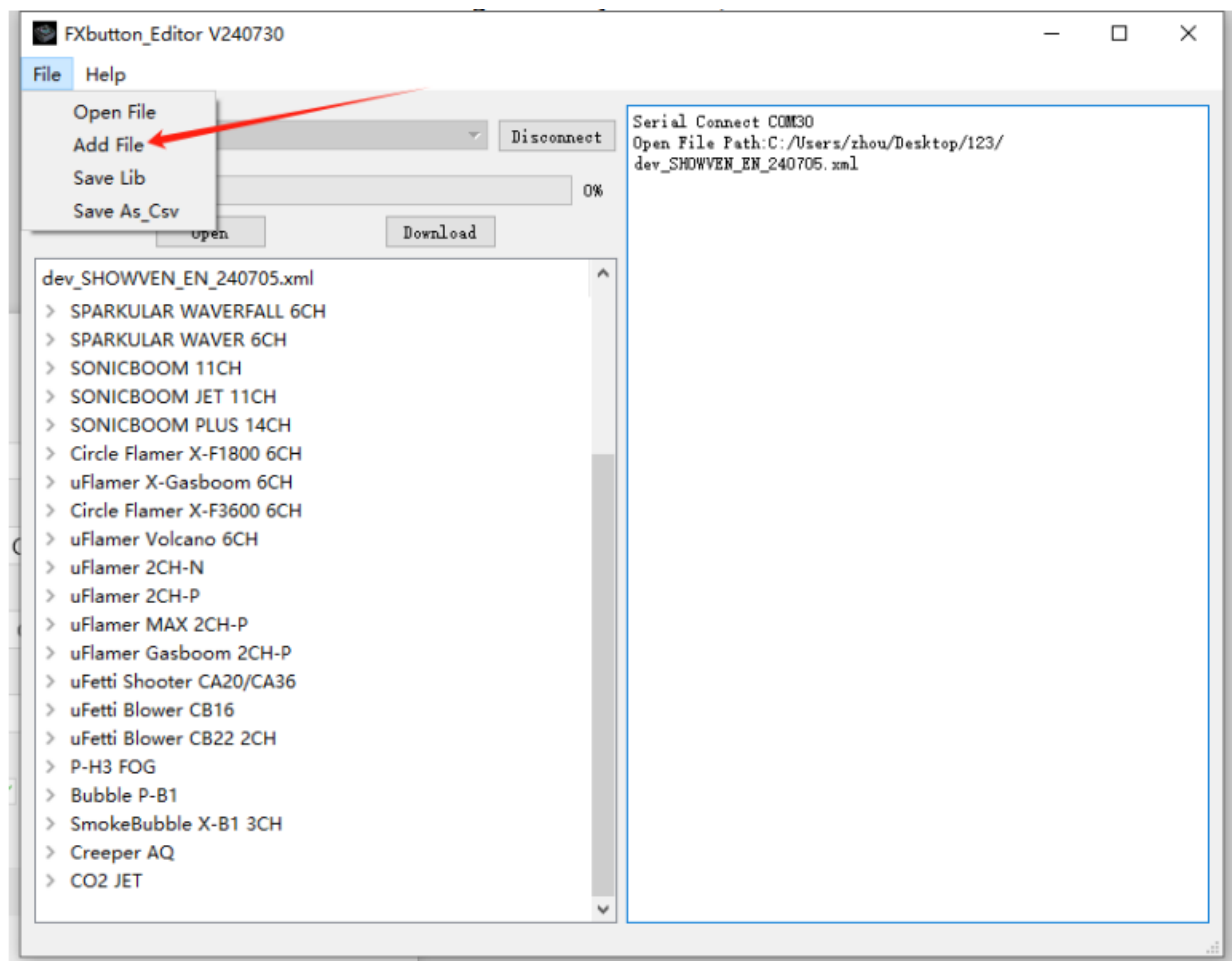


2. Click "open" to open the device lib. All preset devices will show it here.

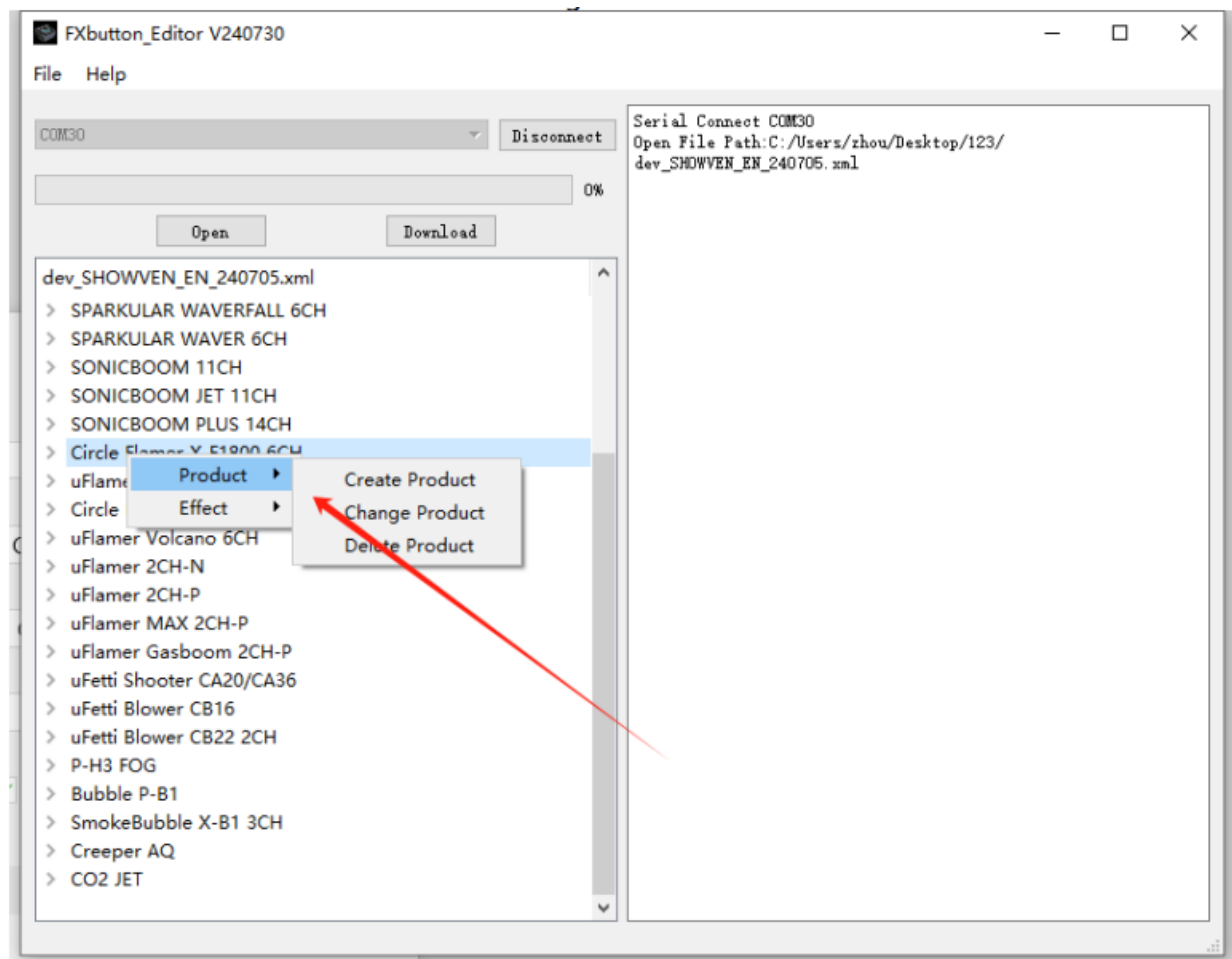


3. To add a new device please click “File / Add File”. Item with \* are required data, Device is the name of the device, ChannelNum means channels related device occupy. Safety Channel Settings is the safety channel setting information. If there is no safety channel, it can be left blank. If need to assign a safety channel, it can't exceed the ChannelNum.

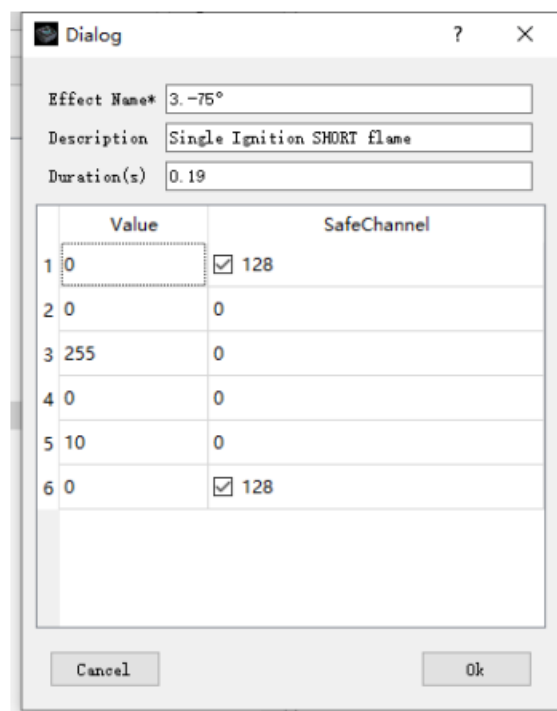




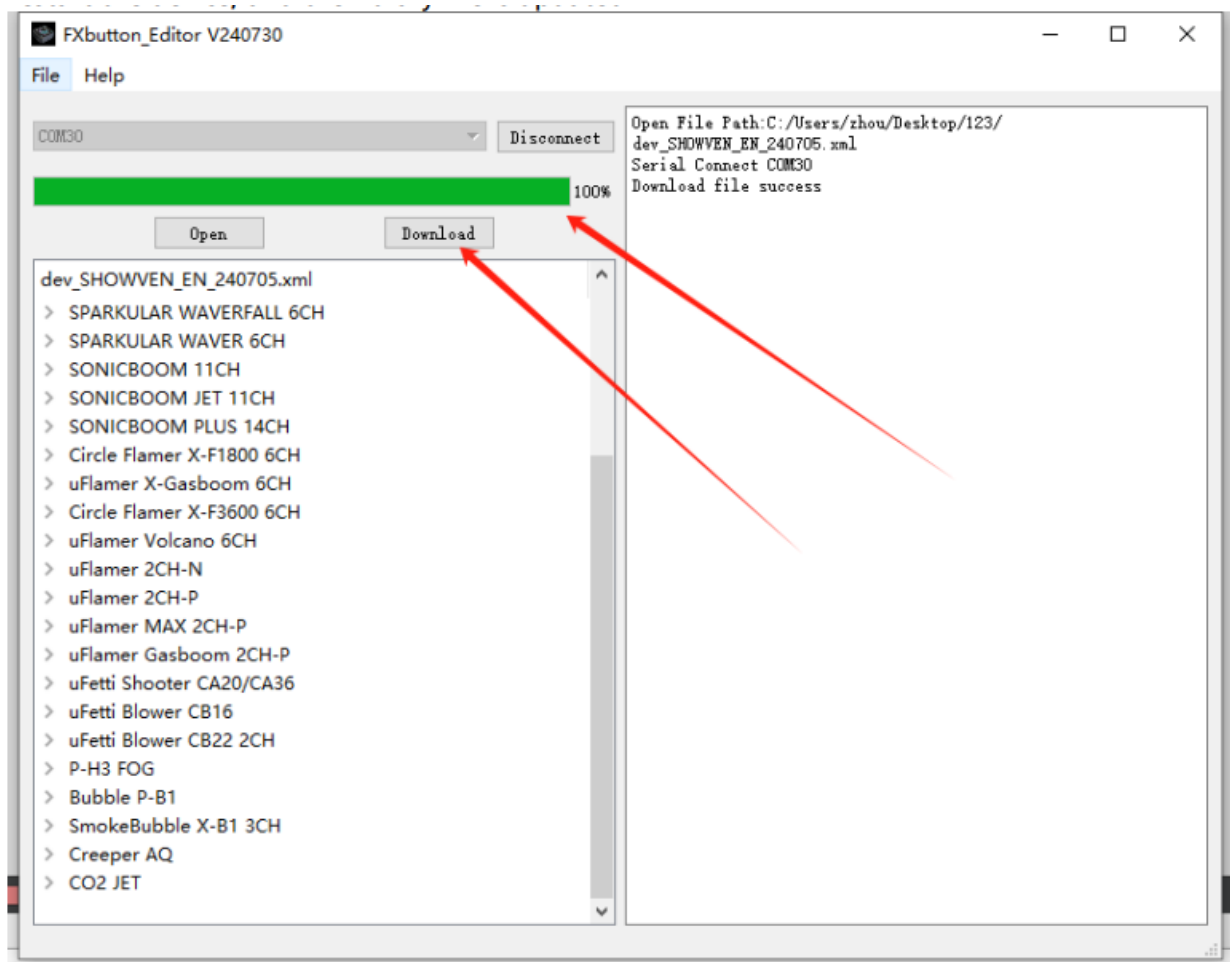
4. Operator can also create, edit or delete device or effects by right click the mouse on device, effect or blank area of the device lib region



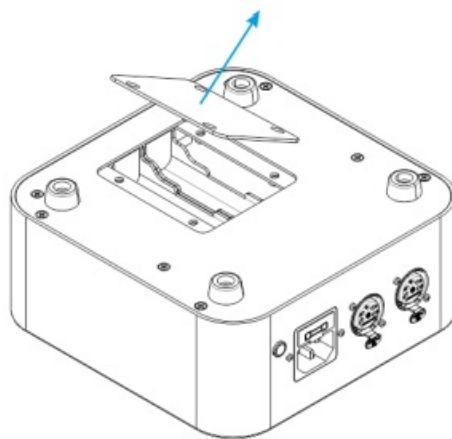
For example, when create an effect it will pop up a dialog as below. Vaule is the DMX value of the effect, SafeChannel is value of safe channel, when there are value in both Value and SafeChannel, DMX value will overwrite SafeChannel value.



Click "Download" to download device lib to FXbutton, wait for the progress bar to complete, restart the device, and the library file is updated.



## Battery Installation



Remove the battery cover at the bottom of the FXButton as shown in the figure, and two 18650 cells needed, the battery is not included in the standard configuration, please prepare it by yourself.

1. Please install battery in the right direction;
2. After installing the battery, you need to connect to AC power or press the RESET button near battery to activate the battery.
3. When AC power supply is connected, the system will manage battery charging automatically, even POWER button is stay at OFF status;
4. To elongate battery service life, no matter use it or not, please charge the battery once per month;
5. Battery specification is flat head, 3.7V or 4.2V.

## Warranty Instructions

- Sincere thanks for your choosing our products, you will receive quality service from us
- The product warranty period is one year. If there are any quality problems within 7 days after shipping out from our factory, we can exchange a brand new same model machine for you
- We will offer free-of-charge maintenance service for machines which with hardware malfunction (except for the instrument damage caused by human factors) in warranty period. Please don't repair machine without factory permission

### Below are situations NOT included in warranty service:

- Damage caused by improper transportation, usage, management, and maintenance, or damage caused by human factors;
- Disassemble, modify or repair products without permission;
- Damage caused by external reasons (lightning strike, power supply etc.)
- Damage caused by improper installation or use;

For product damage not included in warranty range, we can provide paid service. Invoice is necessary when applying for maintenance service from SHOWVEN


## Contact

### Showven Technologies Co., Ltd.



- Tel: +86-731-83833068
- Web: [www.showven.cn](http://www.showven.cn)
- E-mail: [info@showven.cn](mailto:info@showven.cn)
- Add: No.1 Tengda Road, Liuyang Economic & Technical Development Zone, Changsha, Hunan, 410300, P.R.China



## Documents / Resources

 <p>USER MANUAL FXbutton Compact DMX Console Showven Technologies Co., Ltd.</p>	<p><a href="#">SHOWVEN FXbutton Compact DMX Console</a> [pdf] User Manual FXbutton Compact DMX Console, FXbutton, Compact DMX Console, DMX Console, Console</p>
--	---

## References

-  [Founder of Sparkular, Sparkular Machine Maker | Showven](#)
-  [Founder of Sparkular, Sparkular Machine Maker | Showven](#)
- [User Manual](#)

[Manuals+](#), [Privacy Policy](#)

This website is an independent publication and is neither affiliated with nor endorsed by any of the trademark owners. The "Bluetooth®" word mark and logos are registered trademarks owned by Bluetooth SIG, Inc. The "Wi-Fi®" word mark and logos are registered trademarks owned by the Wi-Fi Alliance. Any use of these marks on this website does not imply any affiliation with or endorsement.