



Contents [[hide](#)]

- [1 SHOWVEN 20250616 Blaster Handheld Sparkular Machine](#)
- [2 Technical Specifications](#)
- [3 Product Usage Instructions](#)
- [4 Operation Panel](#)
- [5 FAQs](#)
- [6 Documents / Resources](#)
 - [6.1 References](#)

SHOWVEN®

SHOWVEN 20250616 Blaster Handheld Sparkular Machine



Technical Specifications

- DIMENSION: 585 270 95mm
- WEIGHT: 3.1kg (excluding battery)
- VOLTAGE: AC100-240V, 50/60Hz
- WORK POWER: 140W

- BATTERY: 18650 * 14pcs (Not included in standard configuration)
- HEATING UP TIME: 2min
- STANDBY TIME: 90min (with PANASONIC NCR18650B)
- CHARGING TIME: 40min
- HC8600 CONSUMPTION: 17g/min
- EFFECT HEIGHT ADJUSTABLE: YES
- FIRING ANGLE: between 0°~ 60°
- INTERFACE: ARM and Trigger key
- WORK TEMP.: -10 C~50 C
- CONSUMABLE AND EFFECT HEIGHT: MEDIUM (2-4m)

Product Usage Instructions

Safety Instructions

If the consumable in the hopper is accidentally ignited, pour it out as soon as possible. Consumables should be kept away from moisture and stored in a dry, sealed environment. Check whether there is consumable aggregate in the output nozzle both before and after use.

Operation Panel

- **Keypad Area:** Use the keypad for menu navigation and parameter adjustment.
- **RFID Area:** Utilise this area for RFID card reading.
- **Display Interface**
 - **Welcome Interface:** Displays product information such as model and software version.
 - **Main Interface:** Shows output level, ARM status, battery volume, time remaining, core temperature, and BLASTER status.
 - **Alert/Error Information:** Provides details on potential issues that may arise and troubleshooting steps to resolve them.
- **Main Menu Parameters**

Adjust various settings such as density, set temperature, standby switch, output level, and manual fan activation through the main menu.
- **Operation Guide**

Ensure correct installation to prevent damage to the battery box or machine. Charge

the battery at least once per month to maintain optimal performance. Incorrect battery installation may lead to device damage.

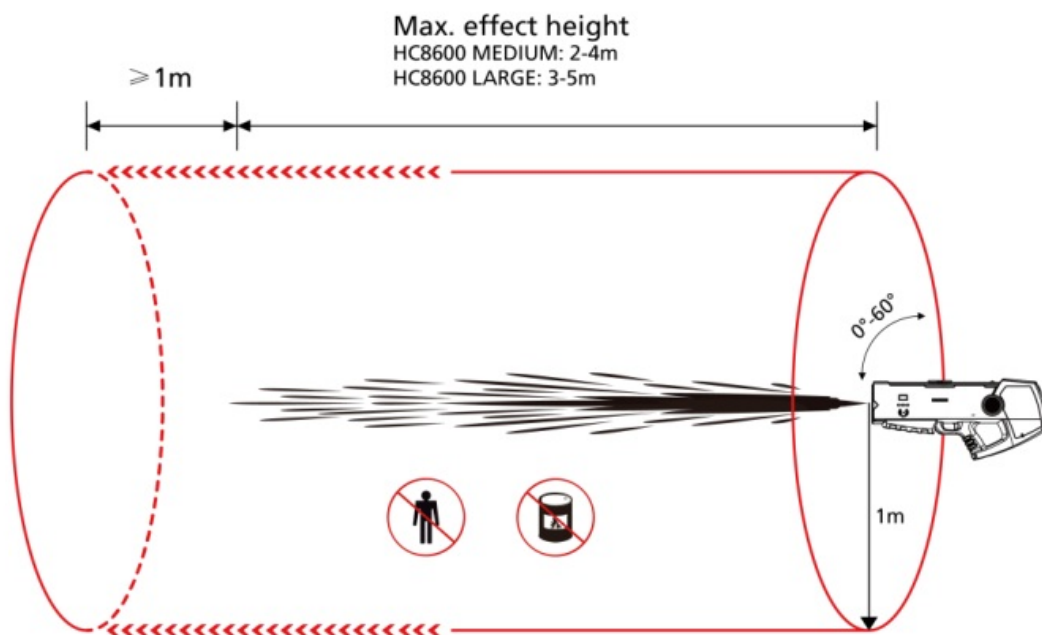
Thanks for choosing SPARKULAR® BLASTER.. We hope it will spice up your show. Please read the following manual carefully before operating this product.

Safety Instructions

- Unauthorised repairs are prohibited; they may cause a serious incident.
- SPARKULAR® BLASTER can't be used in rain; please keep the device dry.
- Make sure the lid of the feeding hopper is well covered when using SPARKULAR® BLASTER. If the consumable in the hopper is accidentally ignited, pour it out as soon as possible.
- Consumables should be kept away from moisture and stored in a dry, sealed environment.
- Check whether there is consumable aggregate in the output nozzle both before and after each show; if any, please clean it up, or it will affect the firing effect, damage the machine, or even cause a serious incident.
- There will be some sparks dropped to the ground, make sure there are no flammable objects s, such as carpet, on the ground within the safety radius of the machine.
- Please only use HC8600 MEDIUM originally from SHOWVEN; otherwise, it may cause jamming or even damage the machine.
- Make sure that children, unauthorised people and animals do not obtain access to the SPARKULAR® BLASTER.
- Only use the original 29.4V charger for charging. It is prohibited to use other chargers for charging; otherwise, it may damage the machine.
- Do not store the battery for a long time after being completely discharged (it is recommended to charge it at least once every two months) to prevent the battery from entering an over-discharge state, resulting in the ttery dying.
- Covering the output air inlet and outlet of SPARKULAR® BLASTER is forbidden.
- Never touch the nozzle of SPARKULAR® BLASTER, danger of getting burned.
- Never touch the sparks which shooting out from the nozzle.

Safety Distance

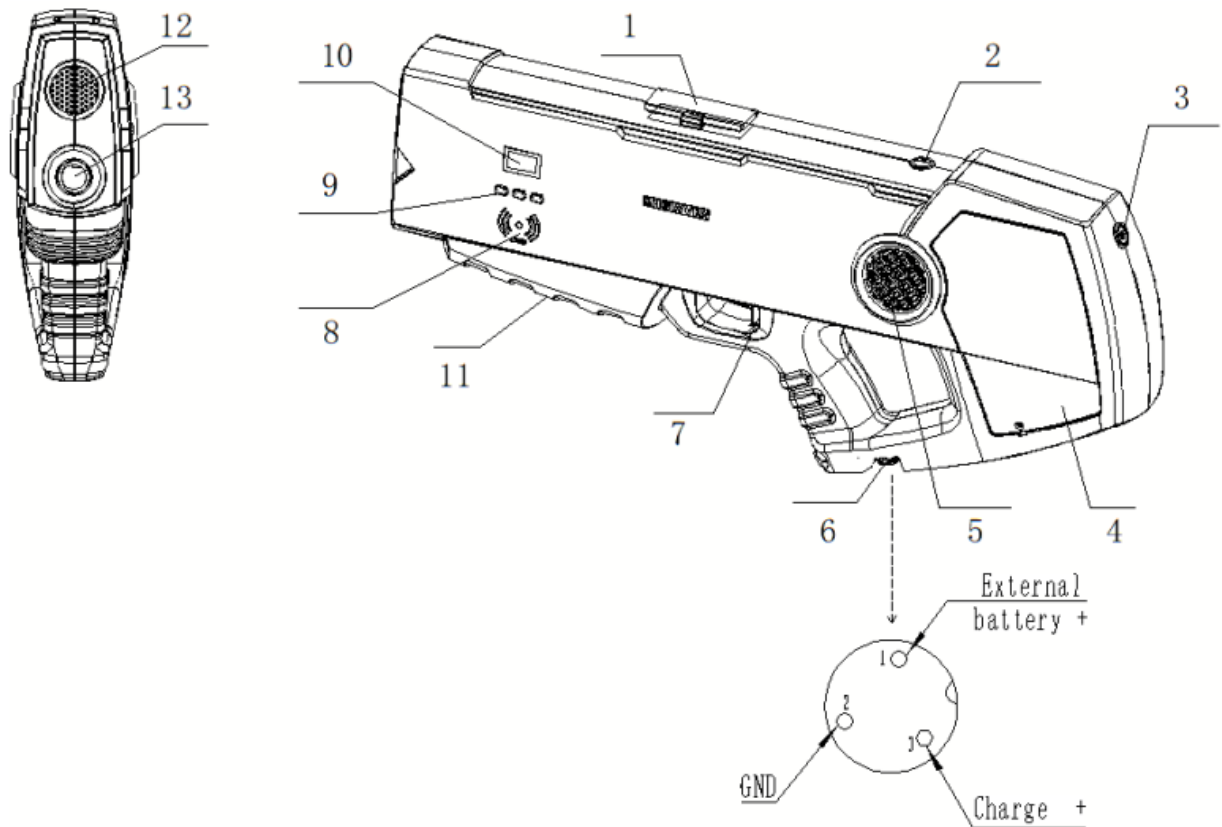
- Safety distance for SPARKULAR® BLASTER is divided into two parts: the safety radius around the machine is 1m, and the safety distance at the firing direction is 5m. SPARKULAR® BLASTER with a suggested 0-60 manual waving firing angles. No person and flammable materials are allowed to stay inside the safety isolation zone (including all waving angle directions) when SPARKULAR® BLASTS are armed.
- Due to SPARKULAR® BLASTER being a hand-held wireless system, please make sure there are no objects near the machine and within the output distance that can be damaged or catch fire by the emitted powder and sparks from it.
- In a windy environment, increase the safety distance according to the wind direction and speed.
- Sparks and consumables from the machine can lead to serious eye injury. Always wear safety goggles when firing it or entering the safety zone.



Description

SPARKULAR® BLASTER is a brand-new handheld SPARKULAR® machine. We break through the traditional SPARKULAR® design and creatively adopt a brand new structural concept, making SPARKULAR® BLASTER a fantastic handheld spark effects device for DJs, singers, etc. applications on stage.

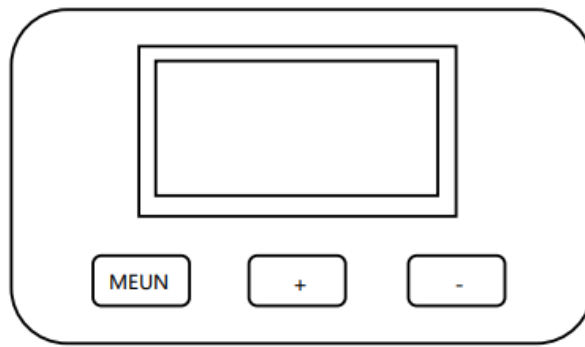
Structure of SPARKULAR® BLASTER



1. Feeding Hopper Lid
2. ARM Switch: switch to ON before firing, when the indicator light FLASH means the machine is in the process of heating up, ON means armed and ready to fire.
3. Power Switch
4. Battery Box Cover: Install the battery on both sides
5. Air Inlet
6. Charging
7. Firing Trigger
8. RFID Card Reader
9. Keypa
10. LCDay
11. Type C port: for software update
12. Heat Dissipate Vent
13. Output Nozzle

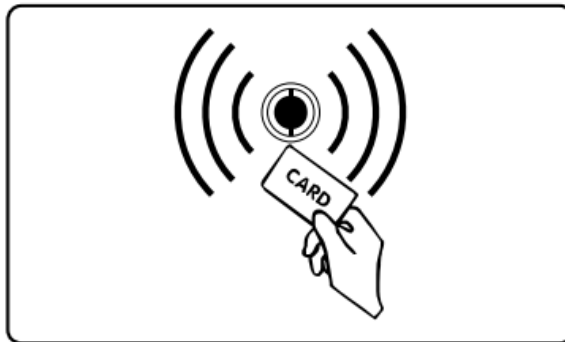
Operation Panel

1. Keypad area



- MENU: Press Enter to set the interface
- UP: Parameter up
- DOWN: Parameter down

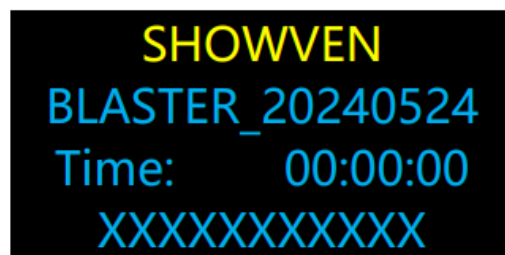
2. RFID area



RFID card comes with consumable HC8600 bags, swiping card to identify parameters and types of granules. The RFID card is disposable; one card can only be used once. Each card can increase a single machine 20min working time; the maximum recharge time for SPARKULAR® BLASTER is 30 minutes.

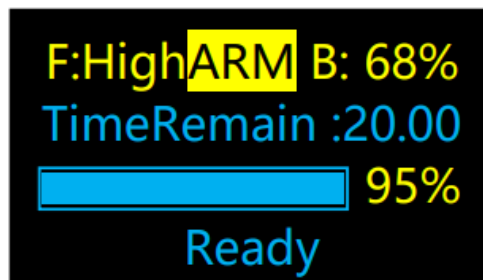
Display Interface

Welcome interface



- First Line: SHOWVEN
- Second Line: MODEL and software version
- Third Line: Accumulated heating time
- Fourth Line: Serial No.

Main Interface



- First Line: Output Level (High, Mid, Low); ARM status display, Battery Volume
- Second Line: Time Remain
- Third Line: Current Core Temp. And temp. progress bar
- Fourth Line: BLASTER status and alert/error message

Alert / Error information

Alert Message	Why it appears	How to remove
E0 System IC	Not original powder, machine will stop working	Contact SHOWVEN
E1 FAN Motor Un	Fan not well connected or circuit problem	Check the fan terminal connection, if can't solve please contact SHOWVEN.
E1 Fan Stall	Fan stuck	Restart BLASTER, if still not solve please check the fan and clean it.
E1 Shaft Stall	Shaft stuck	Restart BLASTER, if still not solve please contact SHOWVEN.
E2 Temp.Sensor	Temp. sensor terminal connector loose or sensor damage	Check connection or replace a new sensor
E3 PTemp.Over	PCB over temp.	Power OFF BLASTER and let it cool down
E4 TimeRemain	Time Remain less than 10min	Read a RFID card
E5 KTemp.Over	Heating coil over temp.	Power OFF BLASTER and let it cool down
E6 Heat Fail	Heating fail	Restart BLASTER, if still not solve the problem might be heating PCB or mainboard
E9 Battery Error	Battery voltage error	Charge first, if not solve then need to change battery

Main Menu

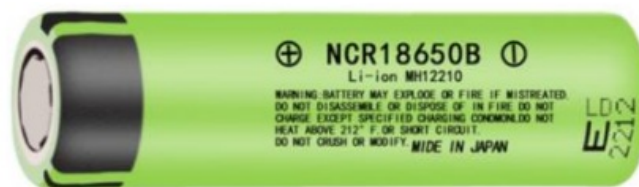
Parameters in the main menu are shown in the table below. Press “UP”/ “DOWN” to change the value.

Options	Range	Default	Explanation
Density	30%-100%	100%	Density set
Set Temperature	420-480	450	Heating coil temp. setting
Standby Switch	ON/OFF	OFF	ON: Temp. need to achieve set temp. before BLASTER can be firing
Output	High / Mid / Low	High	Output set up
Manual Fan	ON/OFF	OFF	ON: fan will keep working at low speed even not firing.

Operation Guide

Battery installation

SPARKULAR® BLASTER can be powered by 14 pieces of 18650 cells. The new SPARKULAR® BLASTER come only with a battery compartment; customers need to get 18650 cells locally. The battery we suggest using is with a flat head as shown below:



The battery installation steps:

- Unscrew the screw of the battery box on both sides of SPARKULAR® BLASTER.
- Install the battery in the correct direction, paying attention to the positive and negative poles. Wrong installation will damage the battery box or even the machine.
- Install the battery box cover.

NOTICE: To avoid damage to the battery, charge the battery at least once per month.

- **NOTICE:** Installing the battery in the wrong direction may cause the battery to heat up and damage the device. If any abnormality is found, remove the battery as soon as possible.
- **NOTICE:** In case the battery level is abnormal, remove all batteries and measure the voltage of each battery. If the voltage is less than 3V, the battery is damaged; please replace a new one.
- **NOTICE:** Only use an insulated plastic spudger to remove the battery. A metal spudger will cause short circuits and damage the machine.

Charging

Power OFF SPARKULAR® BLASTER, use SHOWVEN original 29.4V charger to charge the machine. There is a indicator light on the charger, RED means charging, GREEN means charging is completed.

NOTICE: Only use the original 29.4V charger for charging. It is prohibited to use other chargers for charging; otherwise,, it may damage the machine.

NOTICE: In case the operator needs to keep heating up and firing BLASTER whenever they want for a long period. We can charge the SPARKULAR® BLASTER when it is powered on. But please keep the device in a well-ventilated area for heat dissipation.

SPARKULAR® BLASTER

- Open powder bags and fill the feeding hopper.
- Only HC8600 MEDIUM is suggested to use on SPARKULAR® BLASTER.
- Please note that there may be sparks or remnants that fall to the ground. Make sure no flammable material on the ground or in the region where going to use the SPARKULAR® BLASTER.
- Make sure the lid of the hopper is locked tight after filling.
- Swipe an RFID card to activate BLASTER.

NOTICE: Accidentally burning of consumable HC8600 in the hopper, please pour it out as soon as possible and use sand to extinguish.

NOTICE: SPARKULAR® BLASTER report E4 when the remaining time is less than 10 minutes.

Heating up and Firing

- Power ON the machine, and it will heat up automatically. It will show a loading progress bar on the screen.
- Adjust the output by setting it in the menu.
- Double confirm the prescribed safety isolation zone is clear, no person, animal or other property within this region.

- The operator should not fire towards people, animals, flammable objects or other objects which might be damaged by sparks.
- Switch ON the arm button..
- Press and hold the firing trigger, have fun!
- **NOTICE:** The best output angle for SPARKULAR® BLASTER is between 0° to 60° upward. NOTICE: The Blower will keep working for a few seconds after releasing the firing trigger. NOTICE: Suggest switching off the arm switch for
- SPARKULAR® BLASTER after firing, switch on again when needed.

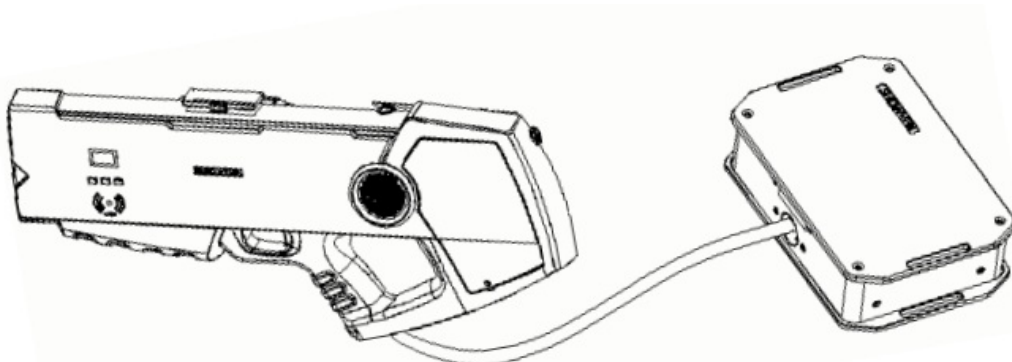
Turn off and clean up..

- Switch OFF the arm switch, power off SPARKULAR® BLASTER, and allow SPARKULAR® BLASTER to cool down.
- Empty the remaining HC8600 in the hopper, and store the remaining HC8600 in a dry, sealed bottle for next time use. Never touch the output nozzle of SPARKULAR® BLASTER when emptying the hopper. DANGER OF GETTING BURNED!
- Clean the machine and put it back in the suitcase after it has fully cooled down.

Optional parts

External Battery Pack The

External Battery Pack is an optional part to extend SPARKULAR® BLASTER's standby time; it can double the standby time for SPARKULAR® BLASTER. Extremely suitable for touring or outdoor use when charging is not accessible.



BLASTER Stand

Assemble the stand as shown below, raise one end of the “Y” holder to the highest position and the other “Y” holder end to the lowest position, so that the BLASTER is in a

horizontal state when placed on it.



Maintenance

- Empty the feeding hopper before shipment of the machine.
- Empty the feeding hopper if long time not use, . For high humidity environment we suggest emptying the hopper after each show.
- Firing the machine a few seconds after emptying the feeding hopper to clear remaining material which may exist inside the machine after each show.

Warranty Instructions

- Sincere thanks for choosing our products, you will receive quality service from us..
- The product warranty period is one year. If there are any quality problems within 7 days after shipping out from our factory, we can exchange a brand new, ew same

model machine for you..

- We will offer free of charge maintenance service for machines with hardware malfunction (except for the instrument damage caused by human factors) in the warranty period. Please don't repair the machine without factory permission.

Below situations are NOT included in warranty service:

- Damage caused by the use of other types of consumables which is not originally from SHOWVEN® .
- Damage caused by improper transportation, usage, management, and maintenance, or damage caused by human factors;
- Disassemble, modify or repair products without permission;
- Damage caused by external reasons (lightning strike, power supply, etc.)
- Damage caused by improper installation or use;
- For product damage not included in the warranty range, we can provide paid service.
- An invoice is necessary when applying for maintenance service from SHOWVEN®.



Showven Technologies Co., Ltd.

- Tel: +86-731-83833068
- Web: www.showven.cn E-mail: info@showven.cn
- Add: No.1 Tengda Road, Liuyang Economic & Technical Development Zone, Changsha, Hunan, 410300, P.R.China

FAQs

Q: What should I do if the machine displays an error message?

A: Refer to the provided error code list to identify the issue and follow the recommended troubleshooting steps. If the problem persists, contact SHOWVEN for assistance.

Q: How often should I charge the battery?

A: Charge the battery at least once per month to ensure proper functionality and avoid damage to the device.

Q: What precautions should be taken when handling consumables?

A: Keep consumables away from moisture, store them in adrr,, sealed environment, and check for any aggregate in the output nozzle before and after use.

Documents / Resources

	SHOWVEN 20250616 Blaster Handheld Sparkular Machine [pdf] User Manual 20250616 Blaster Handheld Sparkular Machine, 20250616, Blaster Handheld Sparkular Machine, Handheld Sparkular Machine, Sparkular Machine
---	---

References

- [User Manual](#)

■ Showven

🔍 20250616, 20250616 Blaster Handheld Sparkular Machine, Blaster Handheld Sparkular Machine, Handheld Sparkular Machine, Showven, Sparkular Machine

Leave a comment

Your email address will not be published. Required fields are marked *

Comment *

Name

Email

Website

☐ Save my name, email, and website in this browser for the next time I comment.

Post Comment

Search:

e.g. whirlpool wrf535swhz

Search

[Manuals+](#) | [Upload](#) | [Deep Search](#) | [Privacy Policy](#) | [@manuals.plus](#) | [YouTube](#)

This website is an independent publication and is neither affiliated with nor endorsed by any of the trademark owners. The "Bluetooth®" word mark and logos are registered trademarks owned by Bluetooth SIG, Inc. The "Wi-Fi®" word mark and logos are registered trademarks owned by the Wi-Fi Alliance. Any use of these marks on this website does not imply any affiliation with or endorsement.