



# SHOKZ CL101A Loop100 USB A Bluetooth Adapter User Guide

[Home](#) » [SHOKZ](#) » SHOKZ CL101A Loop100 USB A Bluetooth Adapter User Guide 

## Contents

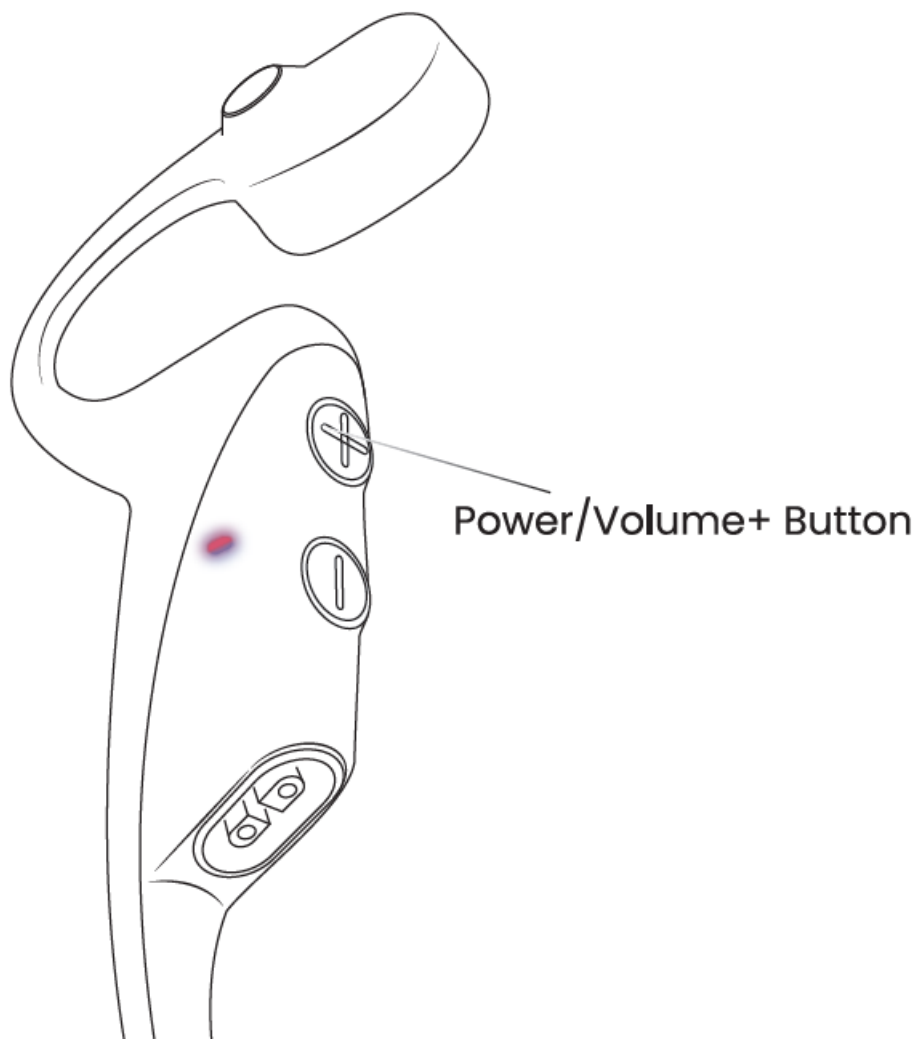
- [1 SHOKZ CL101A Loop100 USB A Bluetooth Adapter](#)
- [2 PAIRING](#)
- [3 Multifunction Button](#)
- [4 Safety Instructions](#)
- [5 FCC](#)
- [6 Documents / Resources](#)
- [7 Related Posts](#)



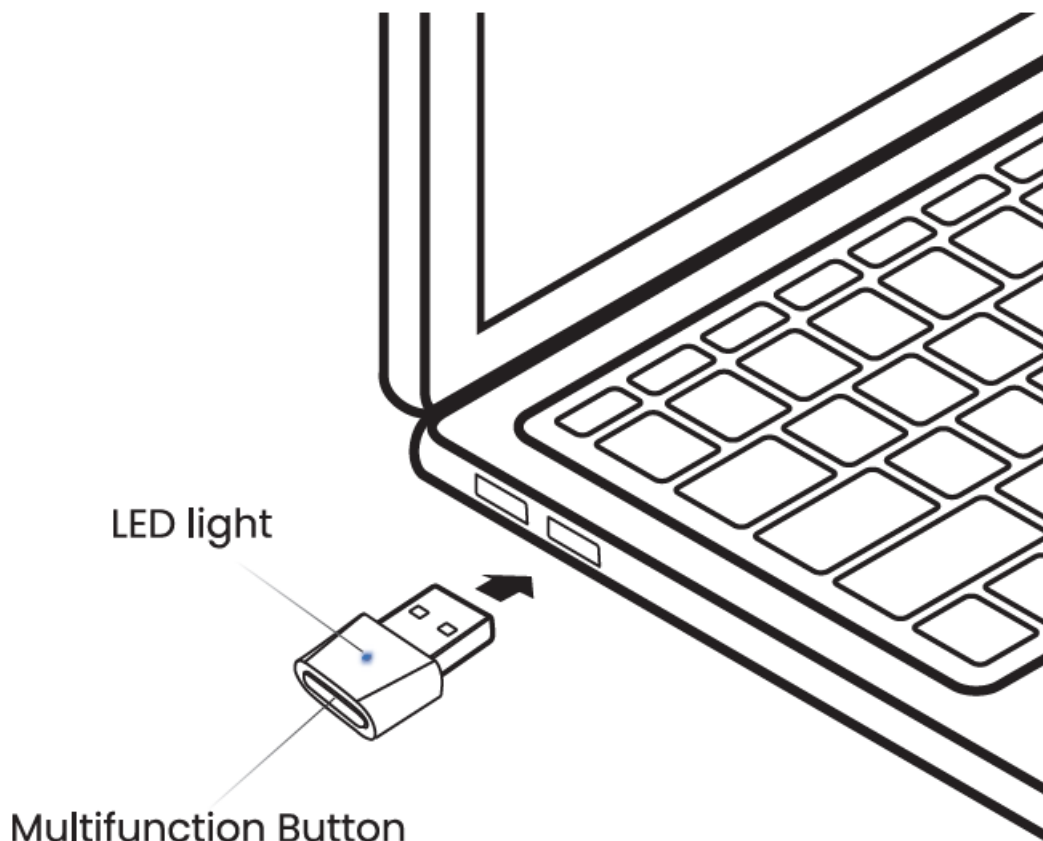
**SHOKZ CL101A Loop100 USB A Bluetooth Adapter**



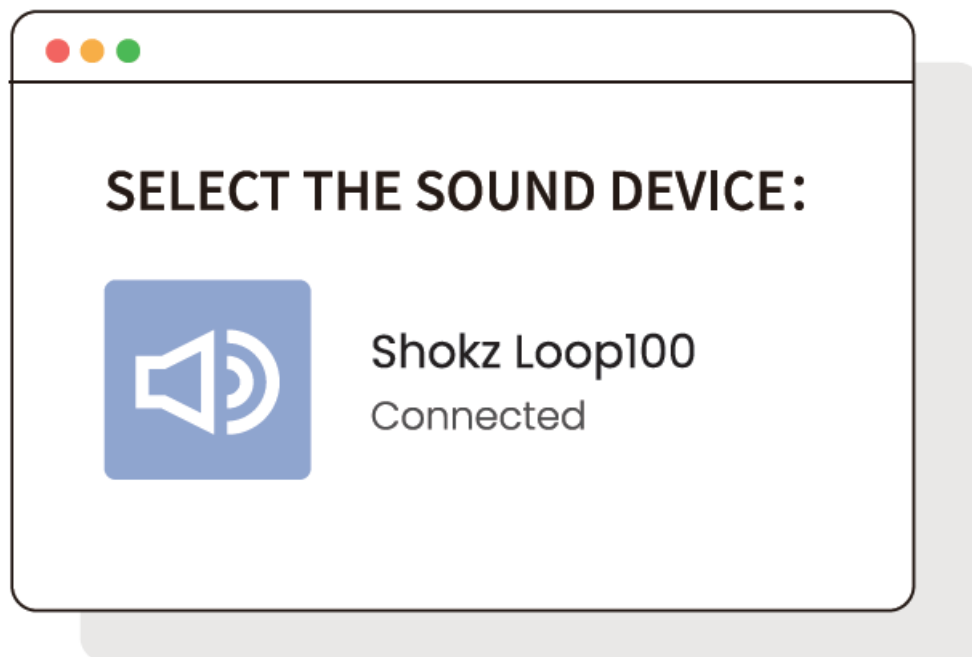
## PAIRING



1. Start with OpenComm turned off. Press and hold the Volume+ button until the LED Indicator flashes red and blue.



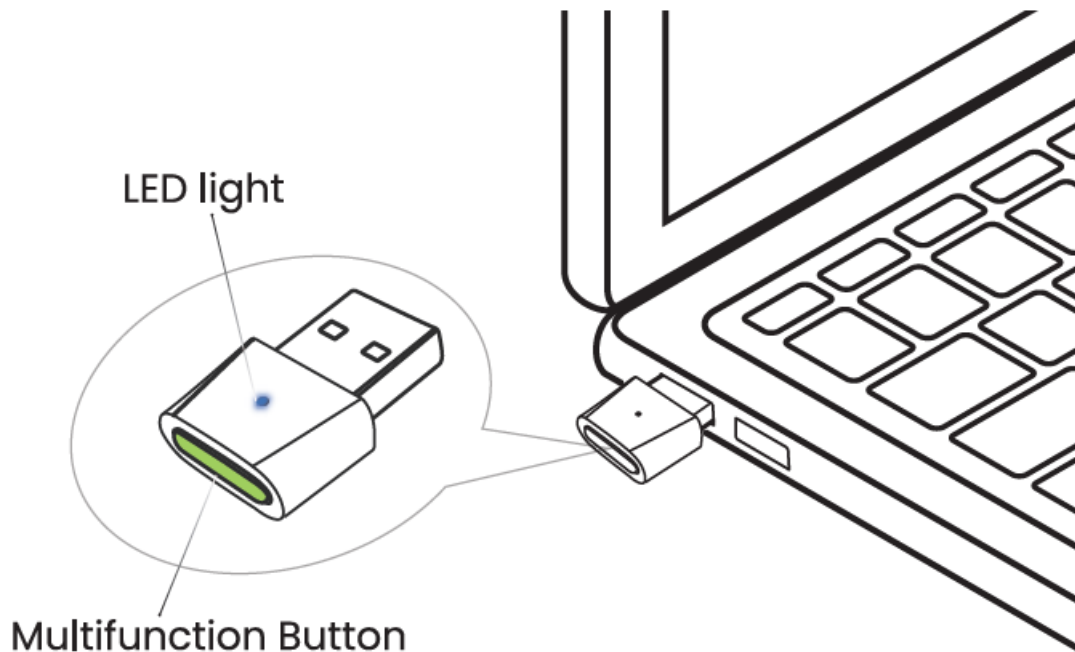
2. Plug the USB adapter into a USB port on your PC. The LED will flash blue rapidly.
3. Connection is established when Audrey says "connected" or beeps, and the LED on the USB adapter is solid blue.



### Configure

To play music or take calls on the headset, please ensure that "Shokz Loop100" is both identified as the default input and output devices in your operating system's audio settings.

### Multifunction Button



Multifunction Button

**Pair to a headset:**

Press and hold for 2 seconds LED: Flashes blue rapidly

**Reconnect to the last connected headset:**

Click once

LED: Flashes blue every second

## Safety Instructions

- Store the product in a cool, dry place. The working and storage temperature should be 0°C-55°C (32°F-131°F).
- Never allow children and pets to play with the product
  - small parts may be a choking hazard. If accidental ingestion happens, seek immediate medical attention.
- Keep the produce away from heat sources, direct sunlight, combustible gas, or other liquids.
- Do not disassemble the product.
- Unplug, discontinue use, and contact Shokz if the product overheats or has a damaged outer casing or plug.

**Note**

Design and specification are subject to change without notice. For the most up-to-date product information, please visit [www.shokz.com](http://www.shokz.com).

## FCC

**FCC Caution**

Any changes or modifications not expressly approved by the party responsible for compliance could void the user's authority to operate the equipment. This device complies with Part 15 of the FCC Rules. Operation is subject to the following two conditions:

1. this device may not cause harmful interference, and
2. this device must accept any interference received, including interference that may cause undesired operation.

## **FCC Statement**

This equipment has been tested and found to comply with the limits for a Class B digital device, pursuant to part 15 of the FCC Rules. These limits are designed to provide reasonable protection against harmful interference in a residential installation. This equipment generates, uses and can radiate radio frequency energy and, if not installed and used in accordance with the instructions, may cause harmful interference to radio communications. However, there is no guarantee that interference will not occur in a particular installation.

If this equipment does cause harmful interference to radio or television reception, which can be determined by turning the equipment off and on, the user is encouraged to try to correct the interference by one or more of the following measures:

- Reorient or relocate the receiving antenna.
- Increase the separation between the equipment and receiver.
- Connect the equipment into an outlet on a circuit different from that to which the receiver is connected.
- Consult the dealer or an experienced radio/TV technician for help.

This equipment complies with FCC/IC radiation exposure limits set forth for an uncontrolled environment and meets the FCC radio frequency (RF) Exposure Guidelines and RSS-102 of the IC radio frequency (RF) Exposure rules. This equipment has very low levels of RF energy that is deemed to comply without testing of specific absorption rate (SAR).

Responsible party (contact for FCC matters only): AfterShokz LLC.  
3200 Gracie Kiltz Lane, Suite 400 Austin, TX 78758 USA [www.shokz.com](http://www.shokz.com)

This equipment complies with FCC radiation exposure limits set forth for an uncontrolled environment. End user must follow the specific operating instructions for satisfying RF exposure compliance. This transmitter must not be co-located or operating in conjunction with any other antenna or transmitter.

The portable device is designed to meet the requirements for exposure to radio waves established by the Federal Communications Commission (USA). These requirements set a SAR limit of 1.6 W/kg averaged over one gram of tissue. The highest SAR value reported under this standard during product certification for use when properly worn on the body.

## **Industry Canada**

This device complies with Industry Canada licence-exempt RSS standard(s): Operation is subject to the following Two conditions: (1) this device may not cause interference, and (2) this device must accept any interference, including interference that may cause undesired operation of the device.

This equipment complies with ISSED radiation exposure limits set forth for an uncontrolled environment. End user must follow the specific operating instructions for satisfying RF exposure compliance. This transmitter must not be co-located or operating in conjunction with any other antenna or transmitter.

The portable device is designed to meet the requirements for exposure to radio waves established by the ISSED. These requirements set a SAR limit of 1.6 W/kg averaged over one gram of tissue. The highest SAR value reported under this standard during product certification for use when properly worn on the body.

## **CE Declaration of Conformity**

Shokz Holding Limited hereby declares that this product is in compliance with the essential requirements and other relevant provisions of Directive 2014/53/EU and all other applicable EU Directive requirements. The complete declaration of conformity can be found at:

<https://shokz.com/pages/policies>. Shokz's EU representative is AfterShokz Euro B.V., Schipholweg 103, 2316XC Leiden, Netherlands.

Frequency: 2400-2483.5MHz	Maximum Power: 12dbm
Input: 5V 1000mA	

## WEEE Declaration of Conformity

This WEEE logo means that this product must not be discarded as household waste, and should be delivered to an appropriate collection facility for recycling. Proper disposal and recycling helps protect natural resources, human health and the environment. For more information on disposal and recycling of this product, contact your local municipality, disposal service, or the shop where you bought this product.


## UK Declaration of Conformity

Shokz Holding Limited hereby declares that this product is in compliance with the essential requirements and all other applicable United Kingdom's regulations. The complete declaration of conformity can be found at: <https://shokz.com/pages/policies>. Shokz's authorised representative in the UK is Pinpoint Consumer Electronics Ltd., Unit 35, Meridian House, Road One, Winsford Industrial Estate, Winsford, Cheshire CW7 3QG.

## Manufacturer

**Warranty:** Shokz Holding Limited gives a warranty of 24 months on this product. For the current warranty conditions, please visit our website at [www.shokz.com](http://www.shokz.com) or contact your Shokz partner. Before putting the product into operation, please observe the respective country-specific regulations.

## Documents / Resources

 <p>Shokz Loop100 USB-A Bluetooth Adapter</p> <p>Model CL101A</p> <p><small>*Compatible products: Shokz Comfy, Shokz Comfy UC</small></p>	<p><a href="#">SHOKZ CL101A Loop100 USB A Bluetooth Adapter</a> [pdf] User Guide</p> <p>CL101A, Loop100 USB A Bluetooth Adapter, CL101A Loop100 USB A Bluetooth Adapter, USB A Bluetooth Adapter, Bluetooth Adapter, Adapter</p>
--	--