



SHINING 3D RN-113 Multifunctional Handheld 3D Scanner User Guide

[Home](#) » [SHINING 3D](#) » SHINING 3D RN-113 Multifunctional Handheld 3D Scanner User Guide 



SHINING 3D®

For More Shining Ideas
EinScan Pro HD
Multifunctional Handheld 3D Scanner



Quick Start Guide
Getting Started with EinScan Pro HD

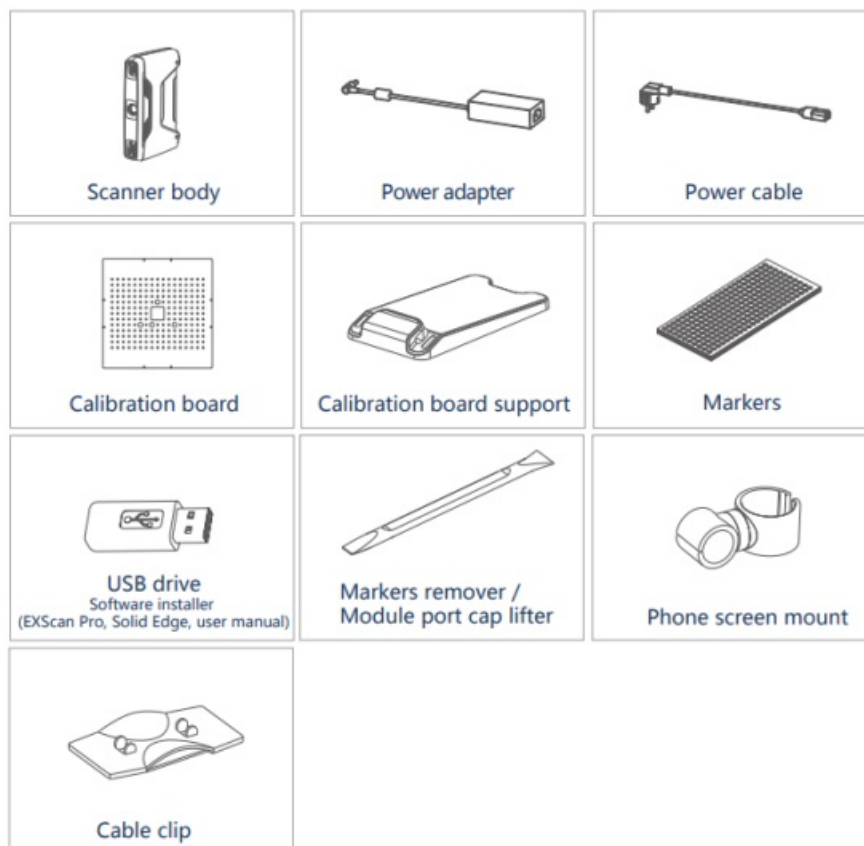
Contents

- 1 Preparation
- 2 Installation
- 3 Software Installation
- 4 Calibration
- 5 Fixed Scan
- 6 Handheld HD Scan
- 7 Handheld Rapid Scan
- 8 Scanning Tips
- 9 Summary
- 10 Documents / Resources
 - 10.1 References

Preparation

Device List

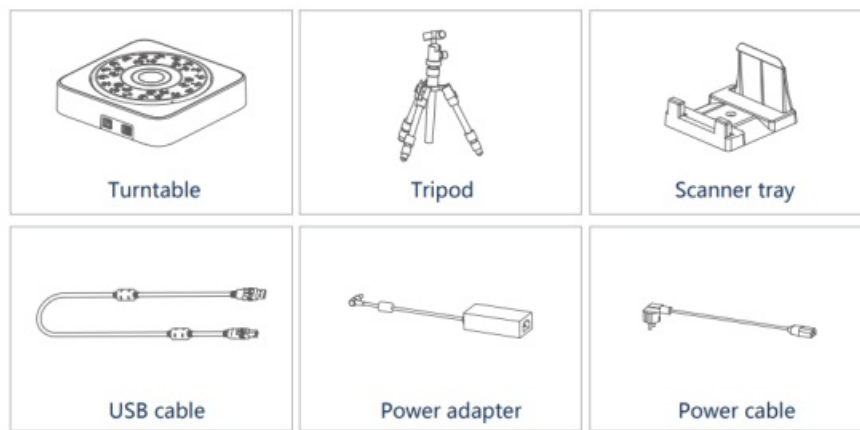
Standard Pack



Note:

1. Plug in dongle before opening Solid Edge software
2. Find the use of phone screen mount in Support-Help at www.einscan.com

Industrial Pack (optional)



Color Pack (optional)



*Please only use water to clean the calibration board, avoid touching any corrosive liquid.

Recommended

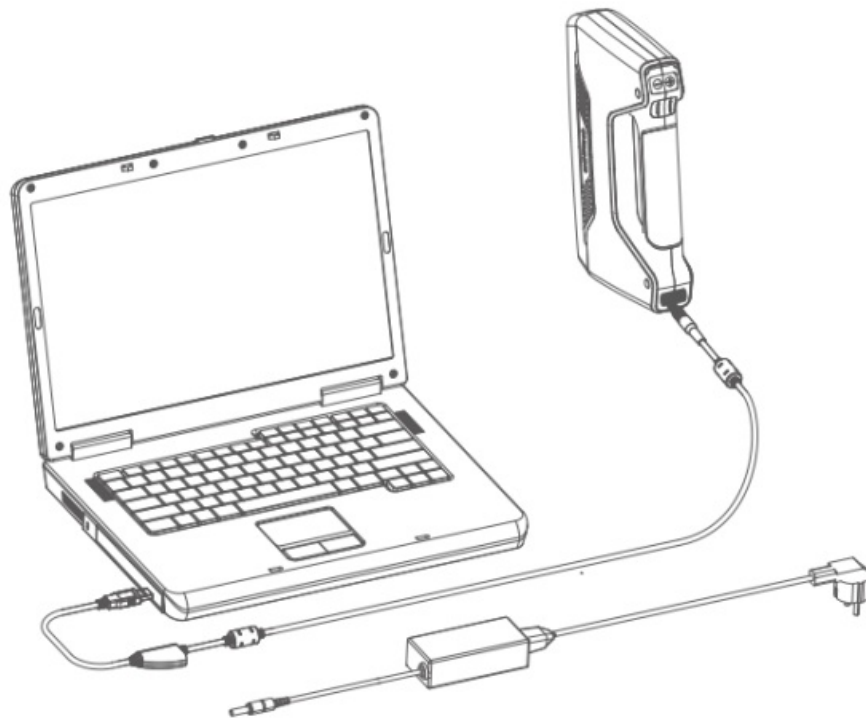
OS	Win10, 64bit
Graphics Card	NVIDIA GTX/RTX series cards higher or equal to GTX 1080
Video Memory	>4G
Processor	I7-8700
Memory	64G
Interface	high-speed USB 3.0

Installation

Hardware Installation

1. Standard Pack

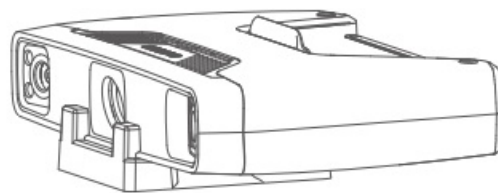
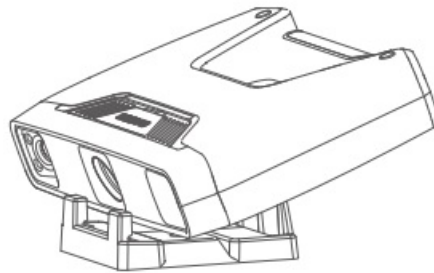
STEP 01 Turn on the device and connect it to the computer through USB 3.0 port.



2. Industrial Pack

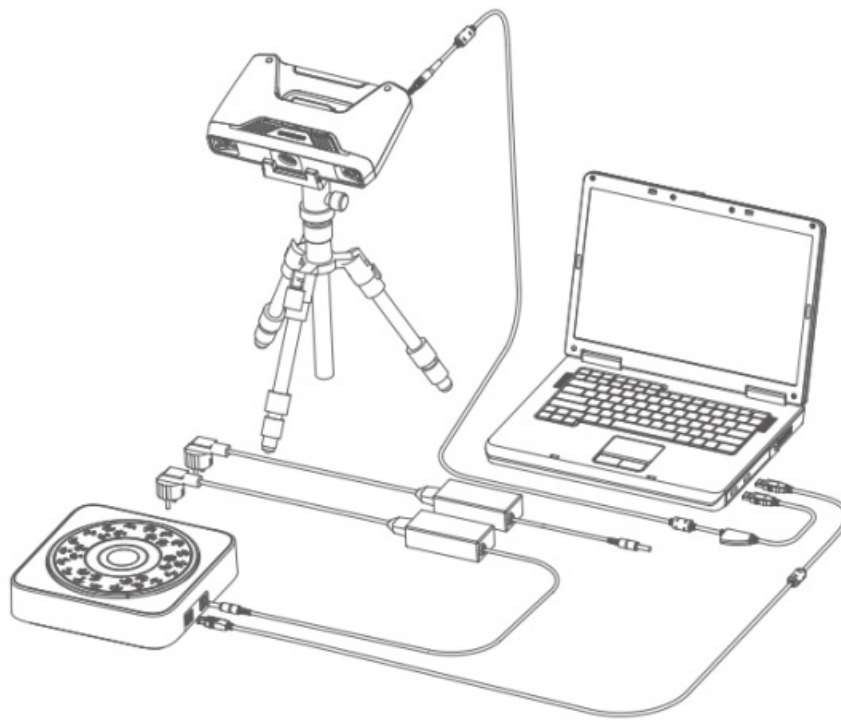
STEP 01

Fasten the scanner tray onto the tripod and place the scanner on the tray.



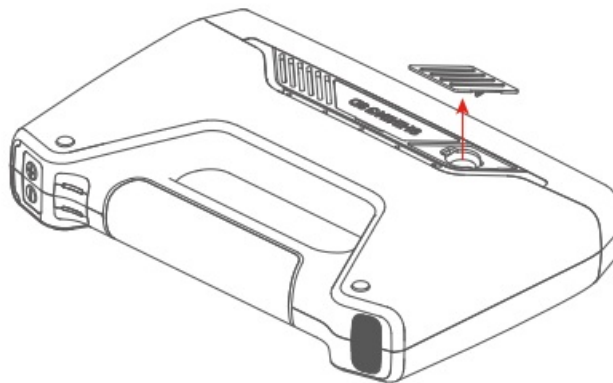
STEP 02

Plug the USB cable into the USB port of the turntable and connect it to the computer. Connect the power cable to the turntable.

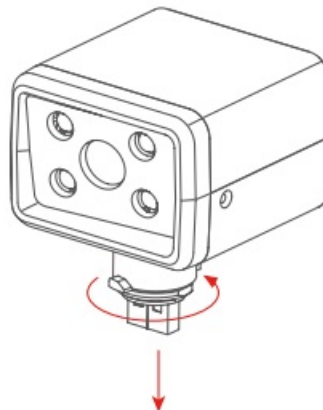


3. Color Pack

STEP 01 Hold the device upright and remove the USB port cover. The cover is located near the logo on the right side of the device.



STEP 02 Insert the Color Pack and lock it with a rotary lever.



4. Operation Environment

Avoid direct sunlight or too bright of light indoors.

Make sure the scanned object and table are stable. For Fixed Scan

Software Installation

Software Download

Download the software and user manual from support.shining3d.com or www.einscan.com/software-download

STEP 01 Run the installer

Double click software installation icon to install the software.



STEP 02 License Activation

After successful installation, when the device is correctly connected, double-click to open the software and activate the device. The format of activation is “online activation”. Make sure your computer is connected to the Internet.

Online Activation

Local Activation

Or do local activation and find the license in the USB drive.

Attention: If you install another device of different serial number, the software will automatically notify users to activate this device.

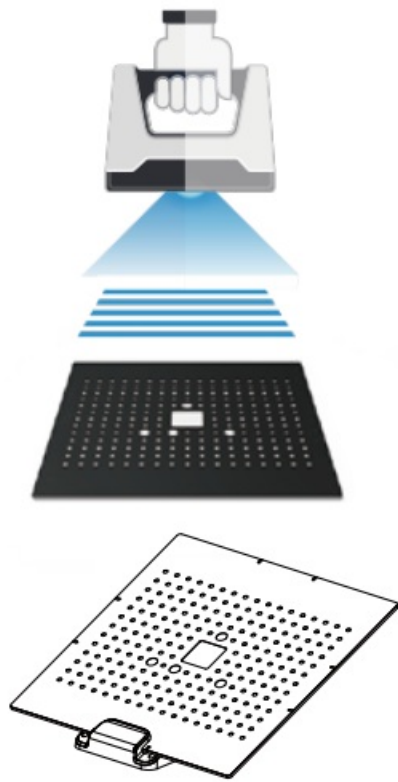
Online Activation

Local Activation

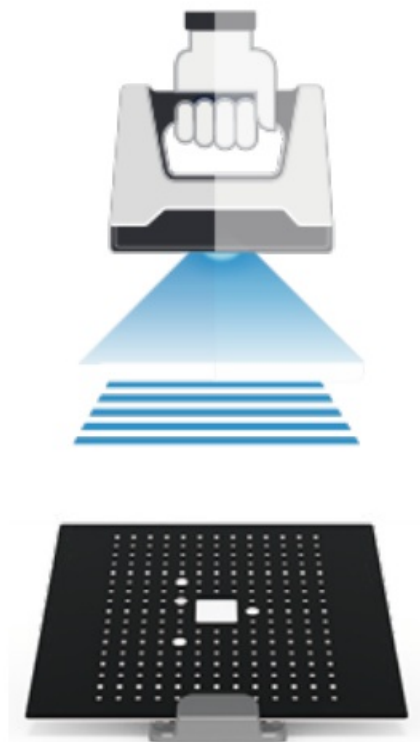
Calibration

STEP 01 Camera Calibration

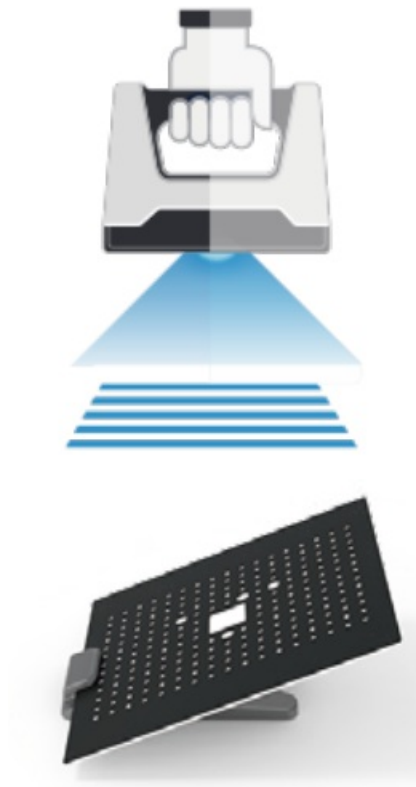
Follow the instruction on the software to place the calibration board in 5 different positions. Hold the scanner vertically and cover the screen range.



STEP 02



STEP 03



STEP 04



STEP 05



White Balance Calibration

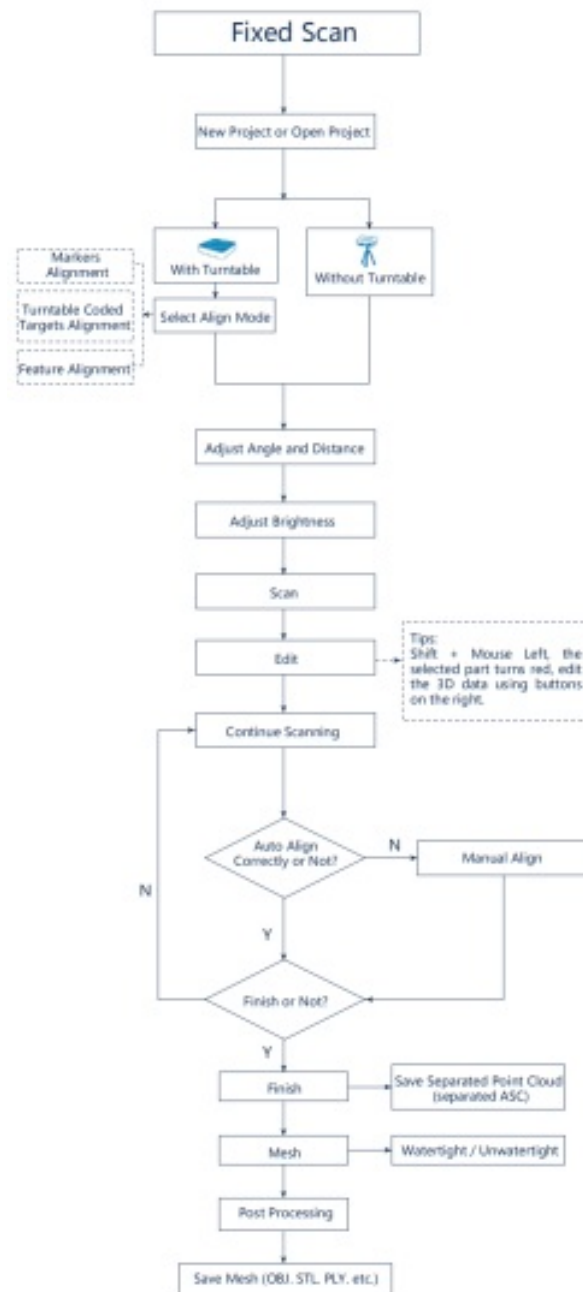
Only required for Color Pack Hold the scanner vertically to the back side of calibration board (white) and adjust the distance until you find the proper distance.

The first time installing the software , calibration is required by default. Calibration is also required for the following:

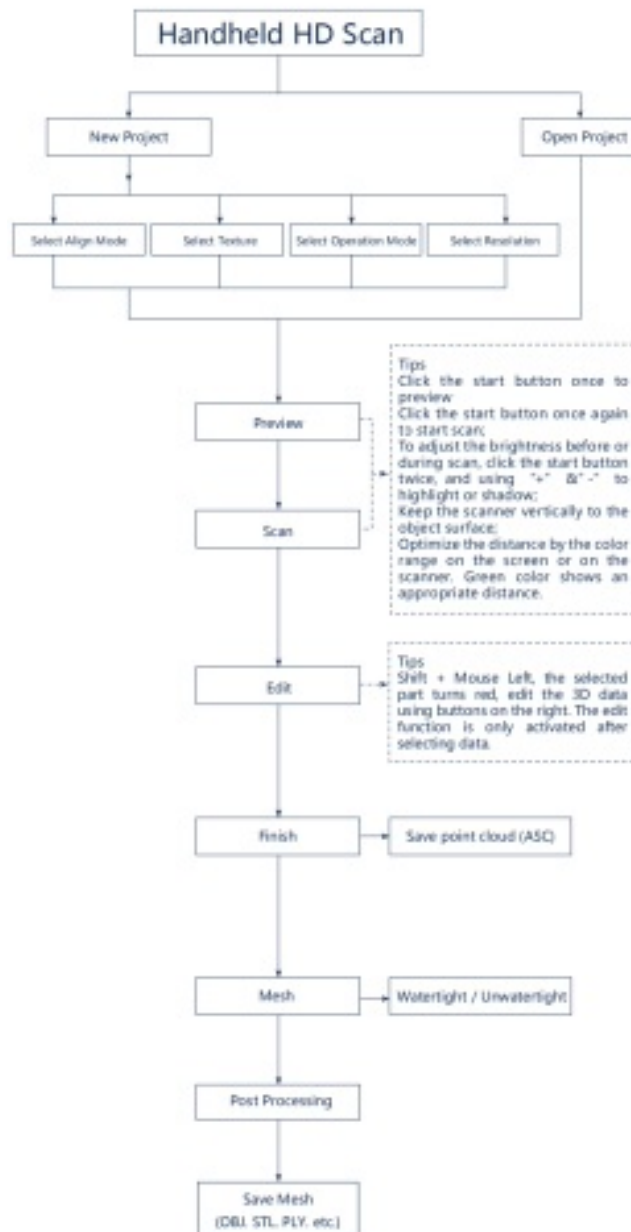
1. Device Change
2. After device enduring bumpy transportation

3. After device accuracy decreases
4. Device being uncalibrated for a long time, for example, 15 days.
5. When using the Color Pack, the texture camera's position has been changed.

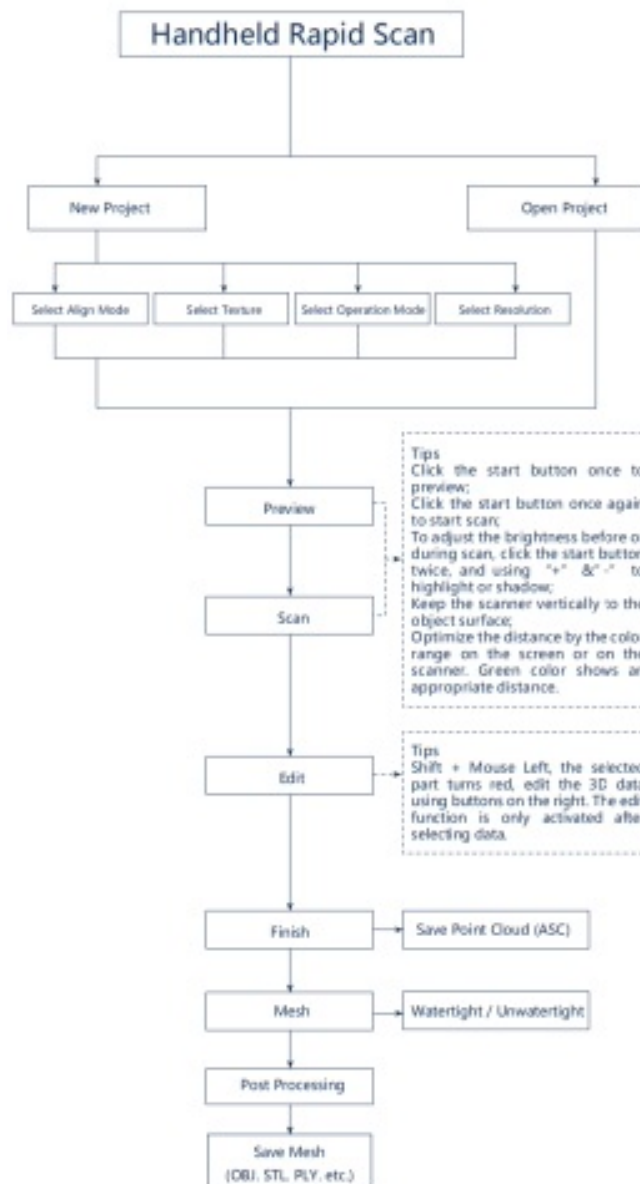
Fixed Scan



Handheld HD Scan



Handheld Rapid Scan



Scanning Tips

Scan Mode Selection

Use Handheld Rapid Scan mode when:

- A fast scanning experience is needed;
- Objects with good geometry for feature alignment;
- Objects are hard to move or too big to stay on turntable for scanning.

Use Handheld HD Scan mode when:

- High accuracy and high resolution by handheld scanning is required;
- Objects are hard to move or too big to stay on turntable for scanning.

Use Fixed Scan with Turntable mode when:

- High accuracy and high resolution is required;
- Objects' footprint within 150mm which may not cover most coded targets on turntable;
- Weight under 5kg;

Objects' footprint above 150mm with rich geometry features can also work in Fixed Scan with Turntable mode through feature alignment.

Use Fixed Scan without Turntable mode when:

- High accuracy and high resolution is required;

Objects is too big or heavy to work on turntable.

Summary

Mode	Accuracy mm	Scan Efficiency	Resolution Point distance m	Align Mode
Fixed Scan with Turntable	Single Shot Accuracy 0.04 ☆☆☆☆☆	Single Scan < 0.5s ☆☆☆☆☆	0.24 ☆☆☆☆☆	Turntable Coded Targets, Feature, Markers, Manual
Fixed Scan without Turntable	Single Shot Accuracy 0.04 ☆☆☆☆☆	Single Scan < 0.5s ☆☆☆☆☆	0.24 ☆☆☆☆☆	Feature, Markers, Manual
Handheld HD Scan	Up to 0.045 +0.3 mm/m (markers alignment) ☆☆☆☆☆	10 fps 3,000,000 points/s ☆☆☆☆☆	0.2-3 ☆☆☆☆☆	Markers, Feature (with rich geometrical features on the surface), Hybrid (Markers and Feature)
Handheld Rapid Scan	Up to 0.1 +0.3 mm/m (markers alignment) ☆☆☆☆	30 fps 1,500,000 points/s ☆☆☆☆☆	0.25-3 ☆☆☆☆	Markers, Feature (with rich geometrical features on the surface), Hybrid (Markers and Feature) Texture (with rich texture)



Difficult to Scan

- Transparent objects like glasses
- Shining or highly reflective objects like mirrors



Solution

- Spray with white powder



Not Recommended

- Moving objects or vibrating objects
- Lattice structure with many small deep holes
- Hairy objects like human hair and fur



SHINING 3D®

Technical Support

Register at support.shining3d.com for support or contact through:

Email: einscan_support@shining3d.com

Skype: einscan_support

For more videos of the scanners, please follow our YouTube channel “SHINING 3D”.

APAC Headquarters

SHINING 3D Tech. Co., Ltd.

Hangzhou, China

P: +86-571-82999050

Email: sales@shining3d.com

No. 1398, Xiangbin Road, Wenyan,

Xiaoshan, Hangzhou, Zhejiang, China, 311258

Americas Region

SHINING 3D Technology Inc.

San Francisco, United States

P: +1415-259-4787

Email: sales@shining3d.com

1740 César Chávez St. Unit D.

San Francisco, CA 94124

www.shining3d.com

EMEA Region

SHINING 3D Technology GmbH.

Stuttgart, Germany

P: +49-711-28444089


Email: sales@shining3d.com

Breitwiesenstraße 28, 70565,

Stuttgart, Germany

www.einscan.com

Documents / Resources

	<p>SHINING 3D RN-113 Multifunctional Handheld 3D Scanner [pdf] User Guide RN-113 Multifunctional Handheld 3D Scanner, RN-113, Multifunctional Handheld 3D Scanner, Handheld 3D Scanner, 3D Scanner</p>
---	---

References

- [Support : Metrology Support](#)
- [3d Scanners, Professional 3D Scanners, Software and Support | EinScan](#)
- [SHINING 3D | High Accuracy 3D Scanning Solutions | Dental 3D Scanners](#)
- [User Manual](#)

[Manuals+](#), [Privacy Policy](#)

This website is an independent publication and is neither affiliated with nor endorsed by any of the trademark owners. The "Bluetooth®" word mark and logos are registered trademarks owned by Bluetooth SIG, Inc. The "Wi-Fi®" word mark and logos are registered trademarks owned by the Wi-Fi Alliance. Any use of these marks on this website does not imply any affiliation with or endorsement.