



SHIHOT B0C7KG3BLF Low Profile Ceiling Fans with Lights Instruction Manual

[Home](#) » [SHIHOT](#) » SHIHOT B0C7KG3BLF Low Profile Ceiling Fans with Lights Instruction Manual 

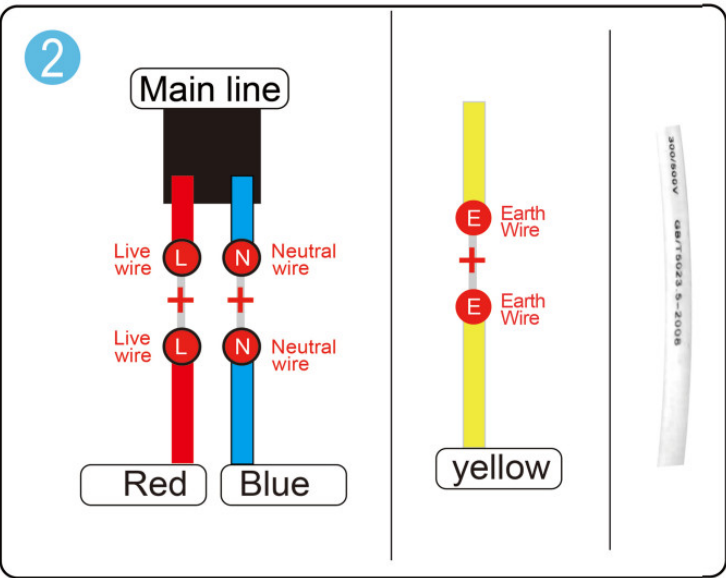
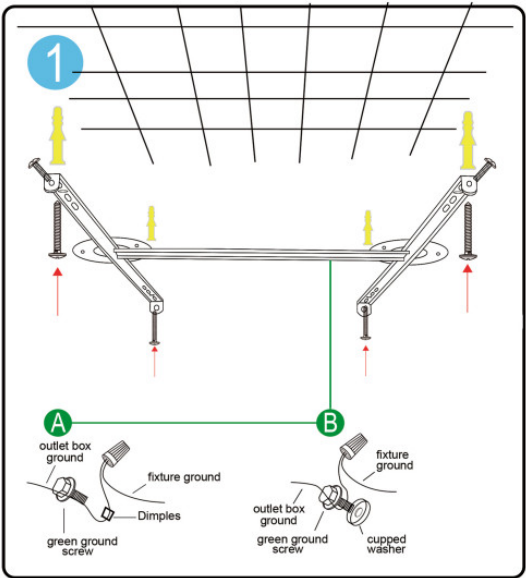
SHIHOT

Installation instructions

Contents

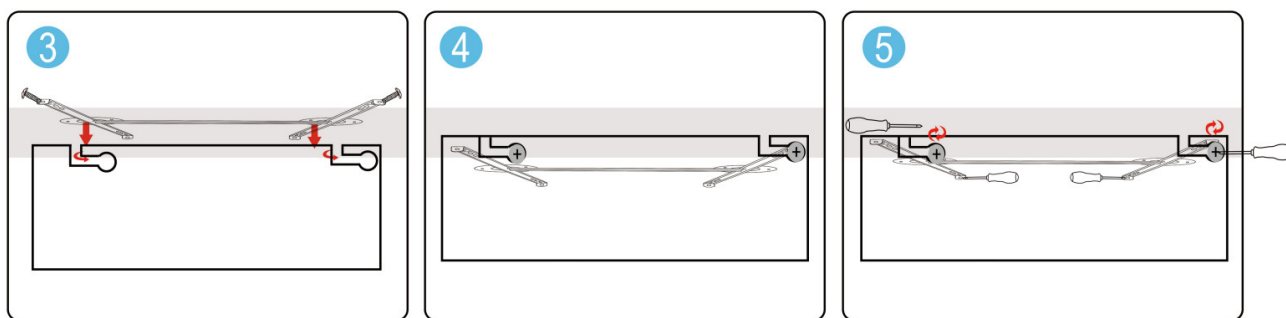
- 1 B0C7KG3BLF Low Profile Ceiling Fans with Lights
- 2 Precautions:
- 3 2.4G wireless digital remote controller
- 4 Documents / Resources
 - 4.1 References

B0C7KG3BLF Low Profile Ceiling Fans with Lights



! Signal line please do not move

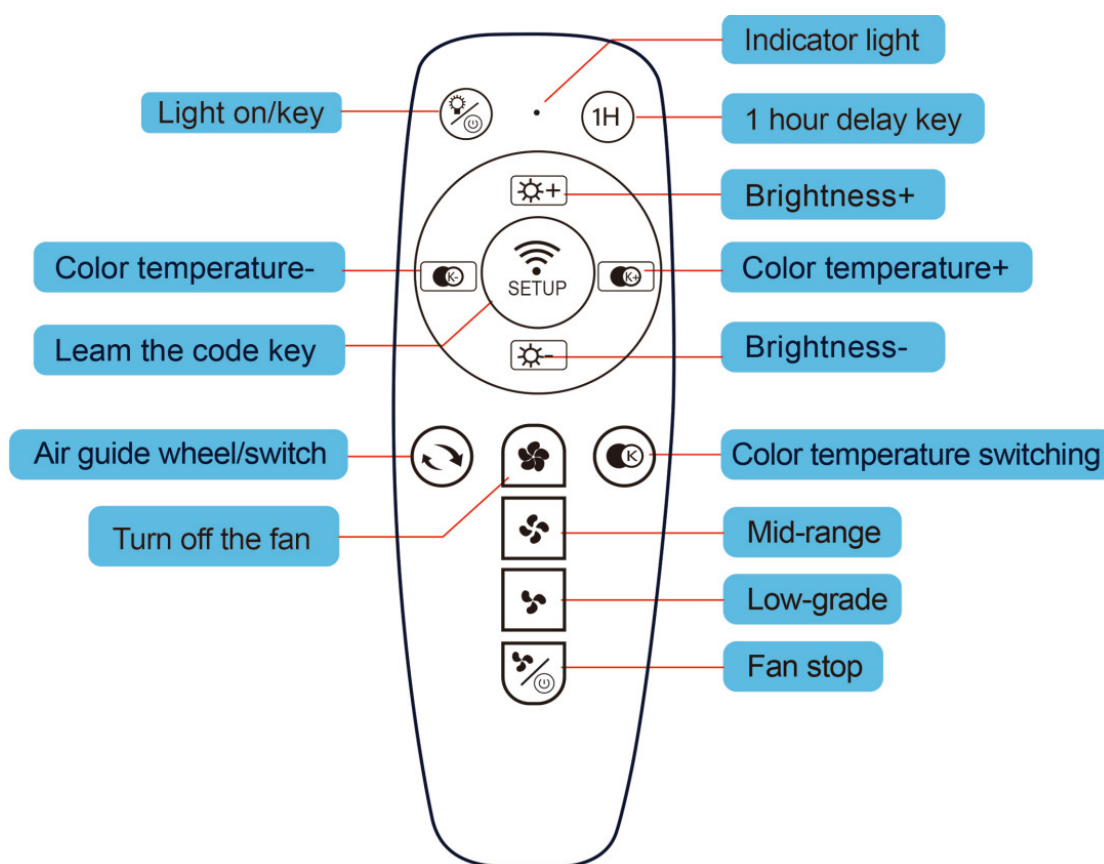
When installing the wiring, please leave the signal wire naked to ensure that there are no obstacles around it to avoid affecting the remote



Precautions:

1. Main motor high voltage, non-professional Please do not disassemble it.
2. When equipped with a pull switch as a wall switch, It must be turned on before this control can work.
3. If the remote control does not work, please check Is the battery connected correctly, or Insufficient power supply, disconnect between checks Controller and fan lights.
4. If not using for a long time, please turn off the power Turn on the power and remove the control battery.

2.4G wireless digital remote controller



APP download



<http://106.14.29.129/app/fengshandeng.html>

Product Brief:

This product uses 2.4 G wireless digital remote control technology, remote control one-to-one control, easy operation, strong anti-interference ability.

Parameter:

Input Voltage: 180-265V AC/50/60HZ

Output voltage: 120-220V

LED output Power: (40-80W)x2

Motor rated power: ≤40W

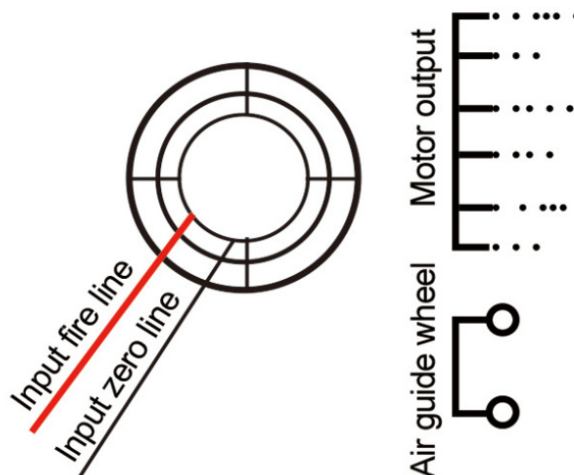
LED output current: 220mA

RF: 2.4G

Remote distance: ≥20M

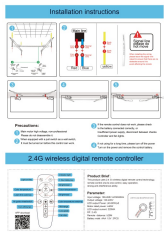
Battery model: AAA 1.5V 2PCS

2.4G Fan Lamp Special Remote Control



SHIHOT

Documents / Resources

	<p>SHIHOT B0C7KG3BLF Low Profile Ceiling Fans with Lights [pdf] Instruction Manual B0C7KG3BLF, B0BD3W3R56, B0C7KG3BLF Low Profile Ceiling Fans with Lights, Low Profile Ceiling Fans with Lights, Ceiling Fans with Lights, Fans with Lights</p>
---	--

References

- [User Manual](#)