



Wireless Door
Window Sensor



ShieldPro Wireless Door Window Sensor User Guide

[Home](#) » [ShieldPro](#) » ShieldPro Wireless Door Window Sensor User Guide 

Contents

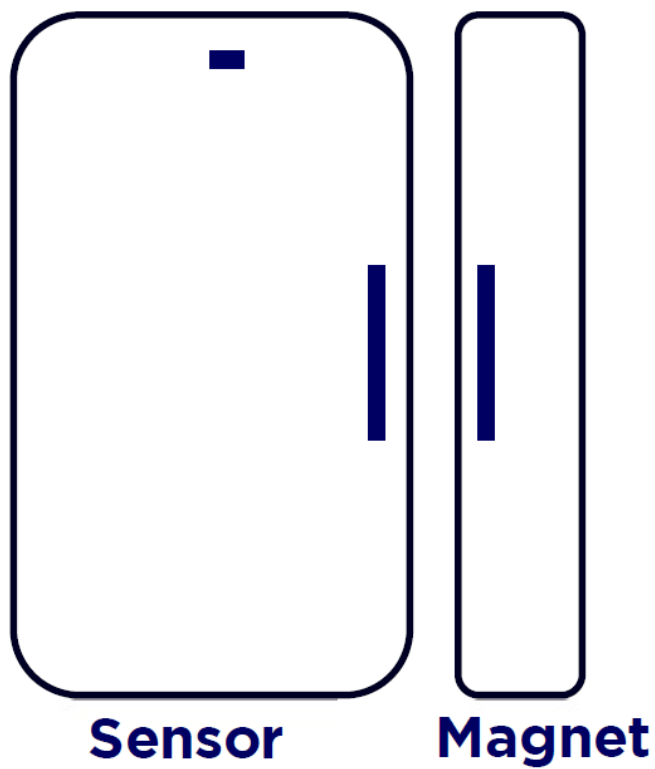
- [1 ShieldPro Wireless Door Window Sensor](#)
- [2 What comes in the box?](#)
- [3 Sensor figures](#)
- [4 Mount your Door/Window sensor with adhesive](#)
- [5 Documents / Resources](#)
 - [5.1 References](#)



ShieldPro Wireless Door Window Sensor



The ShieldPro Door/Window Sensor fits alongside door frames and windowsills.



What comes in the box?

- Sensor x 1
- Magnet x 1
- Wall screws x 4
- Wall anchors x 4

Sensor figures

- **Figure 1:** Placement for door sensors
- **Figure 2:** Placement for window sensors
- **Figure 3:** Grooves for positioning
- **Figure 4:** Distance between magnet and sensor

Figure 1: Placement for door sensors

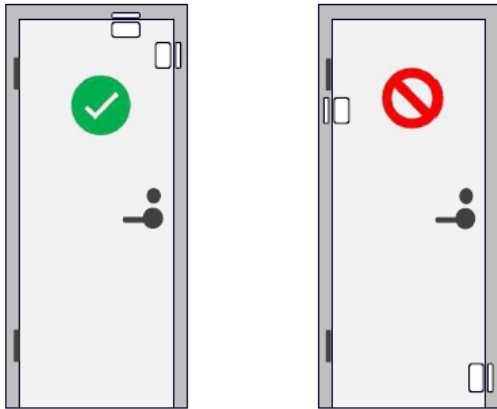


Figure 2: Placement for window sensors

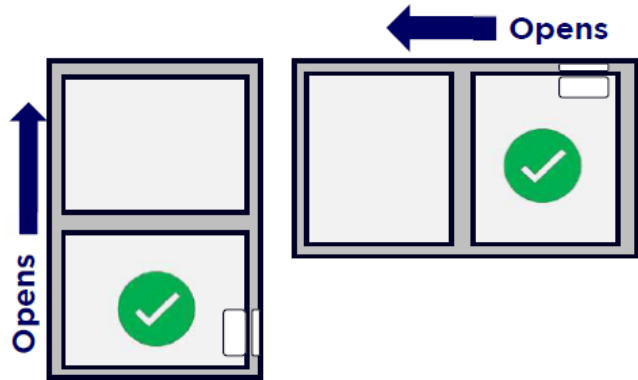


Figure 3: Grooves for positioning

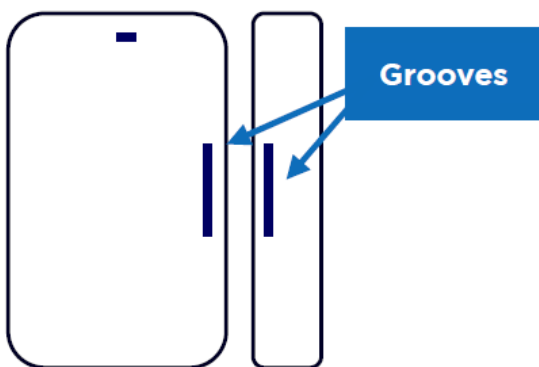
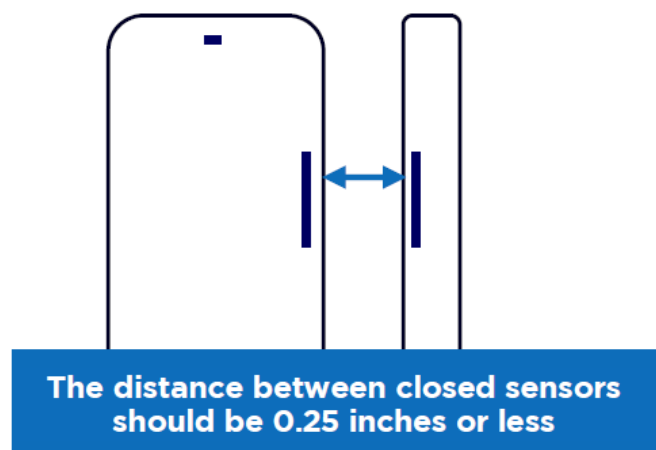


Figure 4: Distance between magnet and sensor



Placement tips

- Indoor use only.
- Pair with the panel before mounting your sensor.
- Place on the opening side of doors and windows (see Figure 1 and Figure 2).
- The grooves must face each other (see Figure 3).
- Sensor and magnet must be 0.25 inches apart or less (see Figure 4).

Mount your Door/Window sensor with adhesive

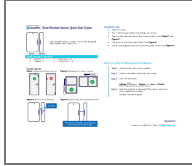
- **Step 1** Clean and dry the sensor location.
- **Step 2** Remove all battery tabs from the sensor.
- **Step 3** Pair with the panel.
Settings (☰ button) > Devices > + > Door or Window >
Follow the prompts to pair the sensor.

- **Step 4** Peel the protective backing off the sensor and press firmly against the surface.
Repeat with the magnet.

Questions?

Contact us at 1-[800-574-7798](tel:800-574-7798) or CST@shieldpro.com

Documents / Resources



[ShieldPro Wireless Door Window Sensor](#) [pdf] User Guide
Wireless Door Window Sensor, Door Window Sensor, Window Sensor, Sensor

References

- [User Manual](#)

[Manuals+](#), [Privacy Policy](#)

This website is an independent publication and is neither affiliated with nor endorsed by any of the trademark owners. The "Bluetooth®" word mark and logos are registered trademarks owned by Bluetooth SIG, Inc. The "Wi-Fi®" word mark and logos are registered trademarks owned by the Wi-Fi Alliance. Any use of these marks on this website does not imply any affiliation with or endorsement.