

ShenZhen
WL FINDER
Portable
Locator Device



ShenZhen WL FINDER Portable Locator Device User Manual

[Home](#) » [Shenzhen](#) » ShenZhen WL FINDER Portable Locator Device User Manual 

Contents

- [1 ShenZhen WL FINDER Portable Locator Device](#)
- [2 Instructions](#)
- [3 How to Connect](#)
- [4 How to Reset](#)
- [5 Connect other device](#)
- [6 Privacy Data Protection](#)
- [7 Safety Instructions](#)
- [8 FCC Statement](#)
- [9 Frequently Asked Questions](#)
- [10 Documents / Resources](#)
 - [10.1 References](#)

ShenZhen

ShenZhen WL FINDER Portable Locator Device



Active 2-Year Warranty

Please send your order number to our WhatsApp /Email within 7 days after receiving the product to activate the warranty. We will provide you 2 year after-sales service. Support free replacement of damaged products. (No need to return damaged products)

- Email: katong96120@gmail.com
- WhatsApp +86 19129546773

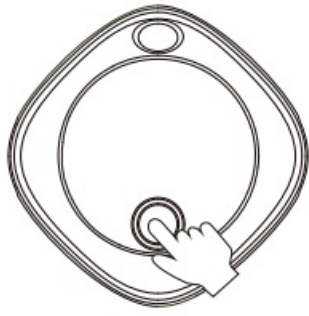
Instructions

- Turn On: Press the button once to. You will hear a “Di”.
- Turn Off: Press and hold the function button for 5 seconds till you hear “DiDiDi” then release

If the item locator is not paired with an Apple device within 2 minutes after powering on, it will automatically shut down. Please power it on again to start pairing.

1. This Only works with Apple devices
2. Phone need open Bluetooth and internet access.
3. you need Log in to your iCloud account, go to “Settings” – “Apple ID” and enable “Share My Location” in the Find My app.
4. Recommended to use the latest version of iOS, iPadOS, or macOS, watchOS.

How to Connect

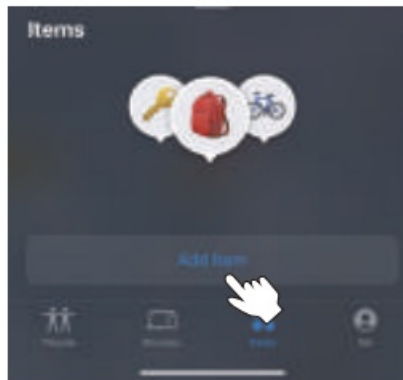


① Turn on the item

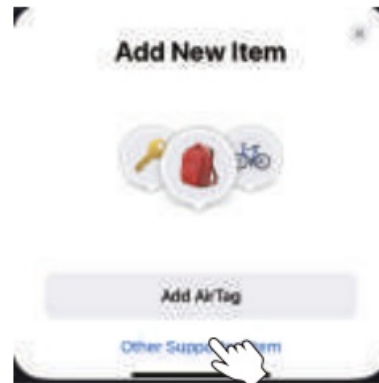


Find My

② Open “Find My” App



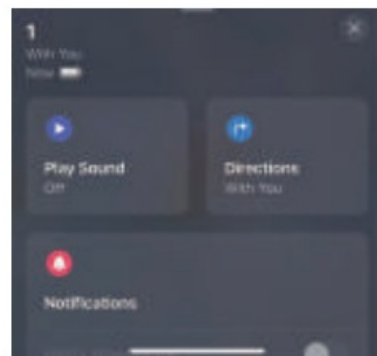
③ Tap "Add Item"



④ Select "Other Supported Item"



⑤ Click the WL FINDER



⑥ Finish

How to Reset

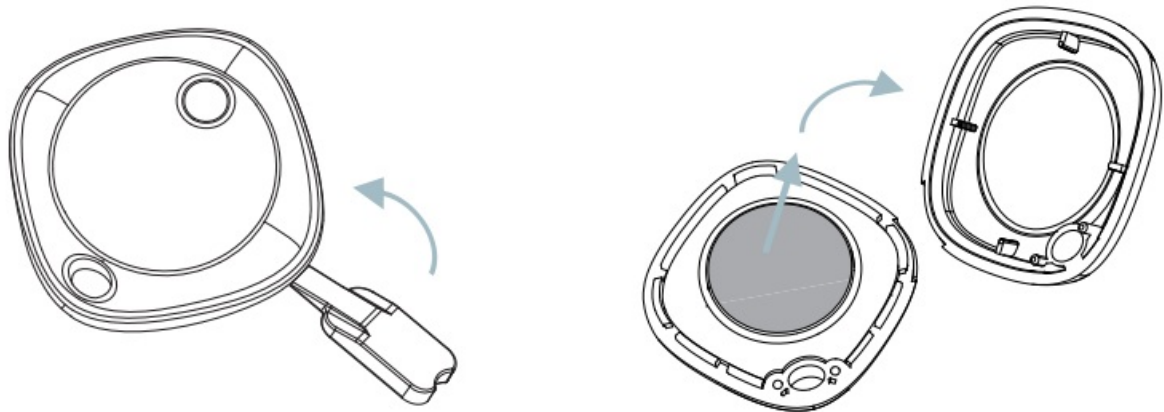
If you are unable to connect, hold down the button until you hear one beep, then two consecutive beeps, and then Three consecutive beeps. Continue pressing for 5 seconds. When you hear a long beep, releasing the button will restore the device to its factory settings.

Connect other device

The “WL FINDER” Item Finder can only be connected to one device. If you want to connect to other Apple devices, please “Remove Item” operation on the Apple\ Find My app and reset the item finder.

Replace the battery

1. Insert a tool open the cover to replace a new CR2032lithium battery, You'll hear a "beep" when the battery is connected correctly.



Legal

KEEP BATTERY OUT OF REACH OF CHILDREN

1. Remove and immediately recycle or dispose of used batteries according to local regulations and keep away from children. Do NOT dispose of batteries in house hold trash or incinerate.
2. Even used batteries may cause severe injury or death.
3. Call a local poison control center for treatment information.

WARNING

- **INGESTION HAZARD:** This product contains a button cell or coin battery.
- **DEATH** or serious injury can occur if ingested.
- A swallowed button cell or coin battery can cause Internal Chemical Burns in as little as 2 hours.
- **KEEP** new and used batteries **OUT OF REACH** of **CHILDREN**
- Seek immediate medical attention if a battery is suspected to be swallowed or inserted inside any part of the body.

Privacy Data Protection

1. **Personal location information protection:** The Apple Find My network uses advanced encrypt on to ensure that no one else, not even Apple or Shenzhen Bonfin Technology Co., Ltd., can view the location of your BF16.
2. **Prevent Anonymous Tracking:** How to prevent the device from being maliciously tracked? When someone else's item finder is mixed into your belongings and tracked for a period, you will be prompted in the following two ways. If you have iPhone, iPad and other Apple device, you will get reminders on Apple device, this function is supported on iOS14.5 or iPadOS14.5 and later versions of Apple devices. If you do not have Apple devices, when someone else's item finder is mixed into your belongings\ and tracked over a period, when it moves, it will emit a beep to remind you. If it happens that your friend is wearing a item finder, or there are

many people on this device in the public transportation you take, don't worry, because if the item finder does not leave its owner's side, it will not trigger such a warning reminder.

FCC Warning

This device complies with Part 15 of the FCC Rules. Operation is subject to the following two conditions:

1. This device may not cause harmful interference.
2. This device must accept any interference received, including interference that may cause undesired operation.

Safety Instructions

1. Keep the product away from extremely hot and cold environments, it will damage the battery and circuit.
2. Avoid liquid immersion into the product.
3. Do not disassemble the product.
4. Do not use concentrated chemical products or detergents to clean the product.
5. Use only 5V/1A power supply. Connecting the power supply voltage too high may cause serious damage.
6. Do not randomly discard or place the product near fire or high temperature to avoid the danger of explosion

FCC Statement

This equipment has been tested and found to comply with the limits for a Class B digital device, pursuant to part 15 of the FCC Rules. These limits are designed to provide reasonable protection against harmful interference in a residential installation. This equipment generates, uses and can radiate radio frequency energy and, if not installed and used in accordance with the instructions, may cause harmful interference to radio communications. However, there is no guarantee that interference will not occur in a particular installation. If this equipment does cause harmful interference to radio or television reception, which can be determined by turning the equipment off and on, the user is encouraged to try to correct the interference by one or more of the following measures:

- Reorient or relocate the receiving antenna.
- Increase the separation between the equipment and receiver.
- Connect the equipment to an outlet on a circuit different from that to which the receiver is connected.
- Consult the dealer or an experienced radio/TV technician for help.

Caution: Any changes or modifications to this device not explicitly approved by the manufacturer could void your authority to operate this equipment.

RF Exposure Information

The device has been evaluated to meet general RF exposure requirements.

The device can be used in portable exposure conditions and compliance with exposure requirements.


Frequently Asked Questions

- **Q: Can the WL FINDER be connected to multiple devices?**
 - A: No, the WL FINDER Item Finder can only be connected to one device at a time. To connect to another device, remove the item from the Apple Find My app and reset the item finder.

- **Q: What should I do if I suspect a battery has been allowed ?**

- A: Seek immediate medical attention if a battery is suspected to be swallowed or inserted inside any part of the body. Keep batteries out of reach of children.

Documents / Resources

	ShenZhen WL FINDER Portable Locator Device [pdf] User Manual 2AWSC-BF18, WL FINDER Portable Locator Device, WL FINDER, Portable Locator Device, Locator Device, Device
---	---

References

- [User Manual](#)

[Manuals+](#), [Privacy Policy](#)

This website is an independent publication and is neither affiliated with nor endorsed by any of the trademark owners. The "Bluetooth®" word mark and logos are registered trademarks owned by Bluetooth SIG, Inc. The "Wi-Fi®" word mark and logos are registered trademarks owned by the Wi-Fi Alliance. Any use of these marks on this website does not imply any affiliation with or endorsement.