



Contents [[hide](#)]

[1 Shenzhen SC-NFC Reader](#)

[2 Product Information](#)

[3 OVERVIEW](#)

[4 PREPAREDNESS](#)

[5 SPECIFICATIONS](#)

[6 OPERATION PROCEDURE FOR SC-NFC WITH SC-800](#)

[7 Federal Communication Commission Interference Statement](#)

[8 FCC Radiation Exposure Statement](#)

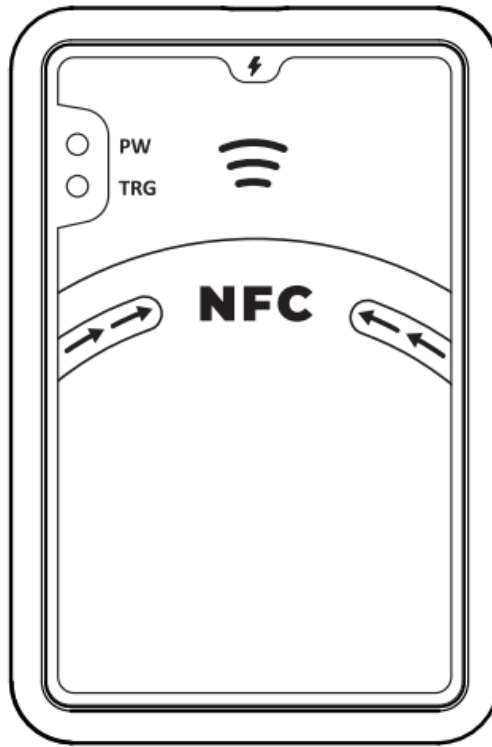
[9 Frequently Asked Questions](#)

[10 Documents / Resources](#)

[10.1 References](#)

Shenzhen

Shenzhen SC-NFC Reader



Product Information

NFC Reader

SC-NFC User Manual

- Do not operate this device in a hazardous atmosphere.
- Do not replace or change accessories in a hazardous atmosphere. Contact sparking may occur while installing or removing accessories and cause an explosion or fire.
- Do not disassemble this device in any way that exposed the internal electrical circuits of the unit.
- Make sure to read this manual before using the machine. Please keep it in hand for future reference.



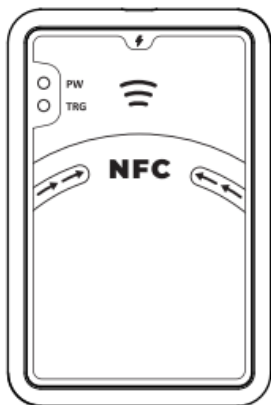
Disclaimer: The products of GOLD APOLLO are intended for legal use only. Users must comply with local laws and regulations. GOLD APOLLO assumes no legal responsibility for any consequences arising from improper, illegal, or infringing actions. In

the event of violations. we reserve the right to terminate transactions.

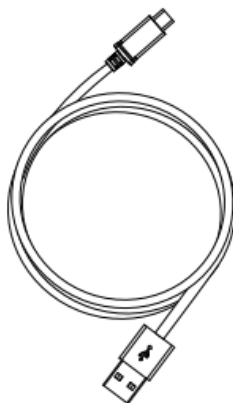
OVERVIEW



PREPAREDNESS



NFC Reader
(SC-NFC)



USB-C to USB-A
Cable

SPECIFICATIONS

STANDBY CURRENT	<100mA	OPERATING VOLTAGE	4.5~5.5V
RFID PROTOCOL	ISO/IEC 14443A/B , ISO/IEC15693	DATA TRANSMISSION FORMAT	USB HID Keyboard

OPERATING FREQUENCY	13.56Mhz	ANTENNA	PCB Antenna
TAG READING DISTANCE	0~30mm	DIMENSION & WEIGHT	69(W)×104(H)×12.6(D)mm ; 55 g

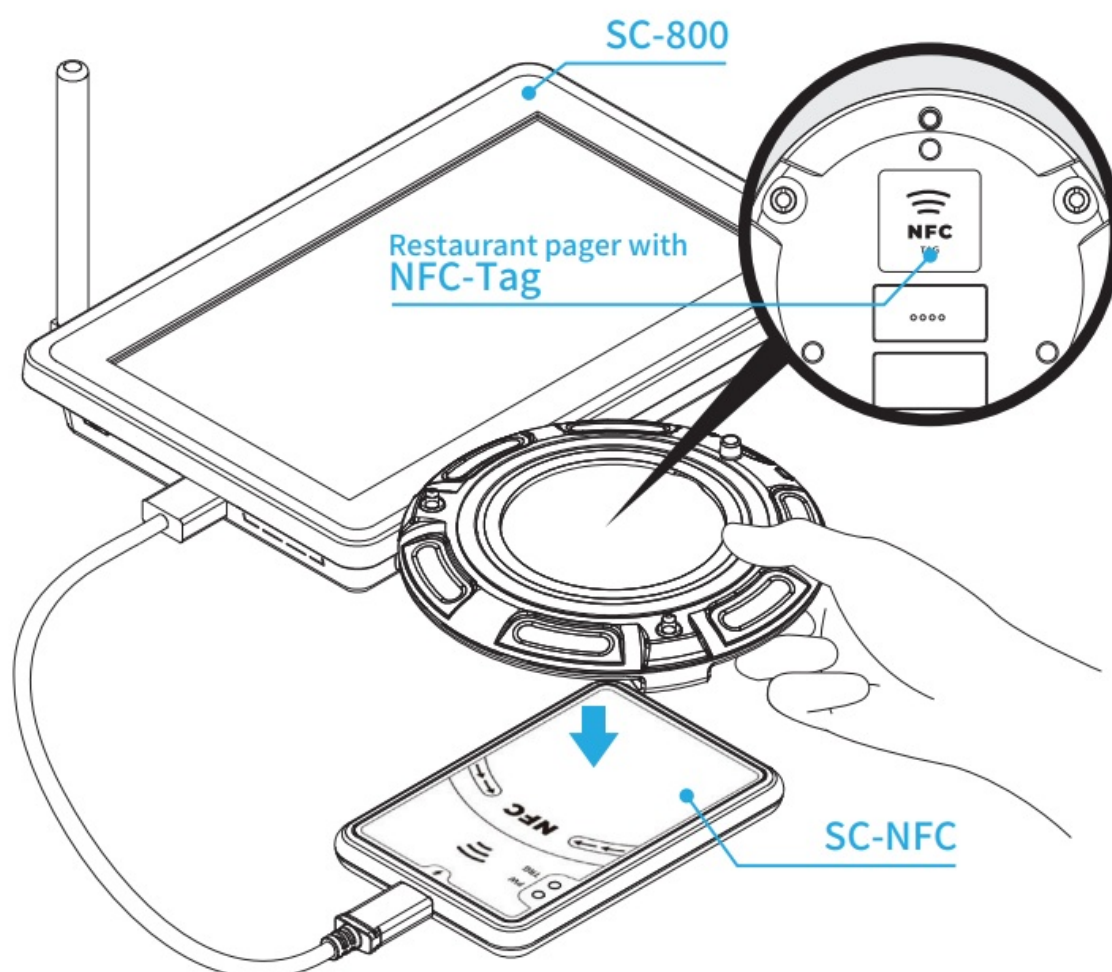
OPERATION PROCEDURE FOR SC-NFC WITH SC-800

Step 1

Use a USB-C to USB-A cable to connect the SC-800 and SC-NFC. (The connection is successful when the power indicator light turns red.)

Step 2

When the restaurant pager with an NFC tag is brought close to the sensing area, the SC-NFC's TRG indicator light will flash red once and emit a beep sound, indicating a successful detection.



For operation of the SC-800, please refer to the SC-800 user manual.

Federal Communication Commission Interference Statement

This equipment has been tested and found to comply with the limits for a Class B digital device, pursuant to Part 15 of the FCC Rules. These limits are designed to provide reasonable protection against harmful interference in a residential installation.

This equipment generates, uses and can radiate radio frequency energy and, if not installed and used in accordance with the instructions, may cause harmful interference to radio communications. However, there is no guarantee that interference will not occur in a particular installation. If this equipment does cause harmful interference to radio or television reception, which can be determined by turning the equipment off and on, the user is encouraged to try to correct the interference by one of the following measures:

- Reorient or relocate the receiving antenna.
- Increase the separation between the equipment and receiver.
- Connect the equipment into an outlet on a circuit different from that to which the receiver is connected.
- Consult the dealer or an experienced radio/TV technician for help.

FCC Caution

To assure continued compliance, any changes or modifications not expressly approved by the party responsible for compliance could void the user's authority to operate this equipment. (Example – use only shielded interface cables when connecting to computer or peripheral devices).

FCC Radiation Exposure Statement

This equipment complies with FCC RF radiation exposure limits set forth for an uncontrolled environment. This equipment should be installed and operated with a minimum distance of 0.5 centimeters between the radiator and your body. This transmitter must not be co-located or operating in conjunction with any other antenna or transmitter.

The antennas used for this transmitter must be installed to provide a separation distance

of at least 0.5 cm from all persons and must not be co-located or operating in conjunction with any other antenna or transmitter.

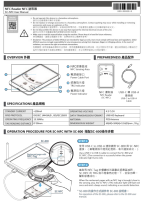
This device complies with Part 15 of the FCC Rules. Operation is subject to the following two conditions:

1. This device may not cause harmful interference, and
2. This device must accept any interference received, including interference that may cause undesired operation.

Frequently Asked Questions

- **Q: How do I know if the NFC Reader is working properly?**
A: You can check the TRG and Power indicators on the device. If they are active, the reader is functioning correctly.
- **Q: Can I use the NFC Reader with both USB-C and USB-A devices?**
A: Yes, the NFC Reader is compatible with both USB-C and USB-A devices. Use the included cable for connection.

Documents / Resources

	Shenzhen SC-NFC Reader [pdf] User Manual NDASCNFC, NDASCNFC scnfc, SC-NFC Reader, SC-NFC, Reader
---	---

References

- [User Manual](#)

Leave a comment

Your email address will not be published. Required fields are marked *

Comment *

Name

Email

Website

☐ Save my name, email, and website in this browser for the next time I comment.

Post Comment

Search:

e.g. whirlpool wrf535swhz

Search

[Manuals+](#) | [Upload](#) | [Deep Search](#) | [Privacy Policy](#) | [@manuals.plus](#) | [YouTube](#)

This website is an independent publication and is neither affiliated with nor endorsed by any of the trademark owners. The "Bluetooth®" word mark and logos are registered trademarks owned by Bluetooth SIG, Inc. The "Wi-Fi®" word mark and logos are registered trademarks owned by the Wi-Fi Alliance. Any use of these marks on this website does not imply any affiliation with or endorsement.