



Shenzhen CM4 Mini hidden camera User Manual

[Home](#) » [Shenzhen](#) » Shenzhen CM4 Mini hidden camera User Manual 

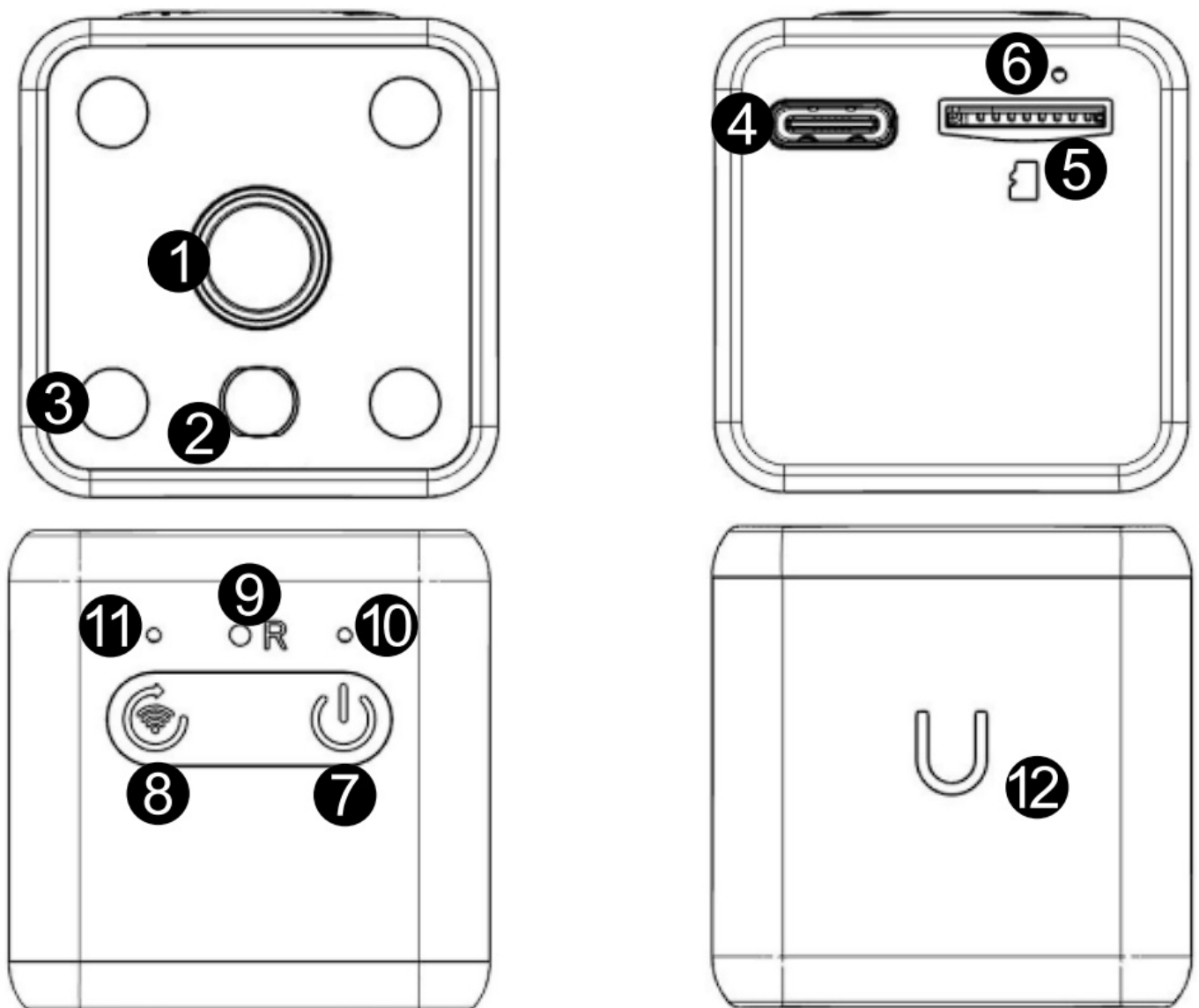
Shenzhen CM4 Mini hidden camera



Contents

- 1 Product introduction
- 2 Steps for Use
 - 2.1 Charging
 - 2.2 Introduction of the Keys and Indicators
- 3 Download and Install Appllc;ation
- 4 Wifi Connec;tion
 - 4.1 Introduction to APP Functional Modules
- 5 Description of Modules on Equipment Main Interface
- 6 Explanation of the Function of Setting Interface.
- 7 Introduction ofDevice Functional Modula
 - 7.1 Product Specification
 - 7.2 Contact us
 - 7.3 FCC WARNING STATEMENT
- 8 Documents / Resources
- 9 Related Posts

Product introduction



1. Lens

2. Fiber optic sensor
3. Night-vision Infrared lamp
4. Power port
5. Micro SD card slot
6. MIC
7. Power key
8. WIFI reset button
9. Reset key
10. Work indicating light
11. Charging indicator
12. Magnetic area of the bracket

Steps for Use

Charging

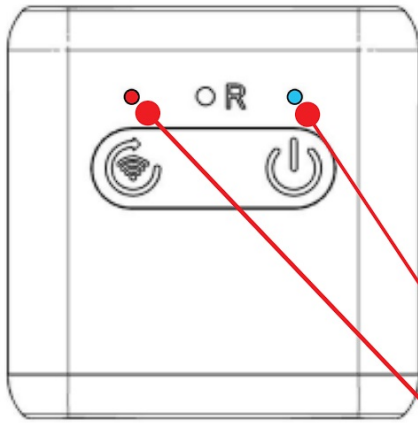
Use a 5V/1A adaptor to charge.



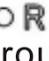
The red indicator is always on during charging and will go out after the device is fully charged:

Note: It is recommended to charge the battery for 2 hours before using it for the first time, so as to avoid start-up failure due to a flat battery.



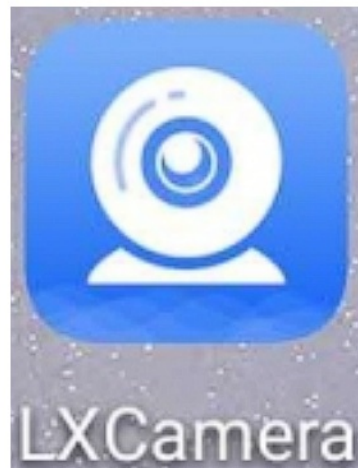
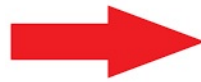
Introduction of the Keys and Indicators



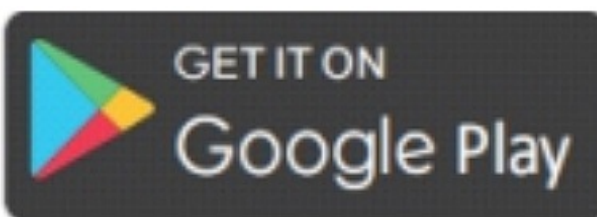
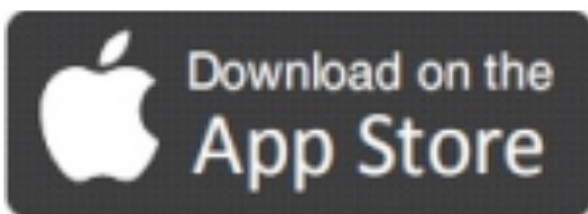
- 2.1 "  "Power key: click the key to start up the device and press the key for 3 seconds to shut it down.
- 2.2 "  "WiFi reset key: press the key for 3 seconds to reset WiFi.
- 2.3"  "Reset key: use a needle to click the key through the hole to shut down the device.
- 2.4 Blue indicator: device started up and working. (right side)
- 2.5 Red indicator: charging .(left side)

Download and Install Application

Scan the following QR code to download and install the APP




Download the "LXCamara" app and install it through the Apple Store or Google Store

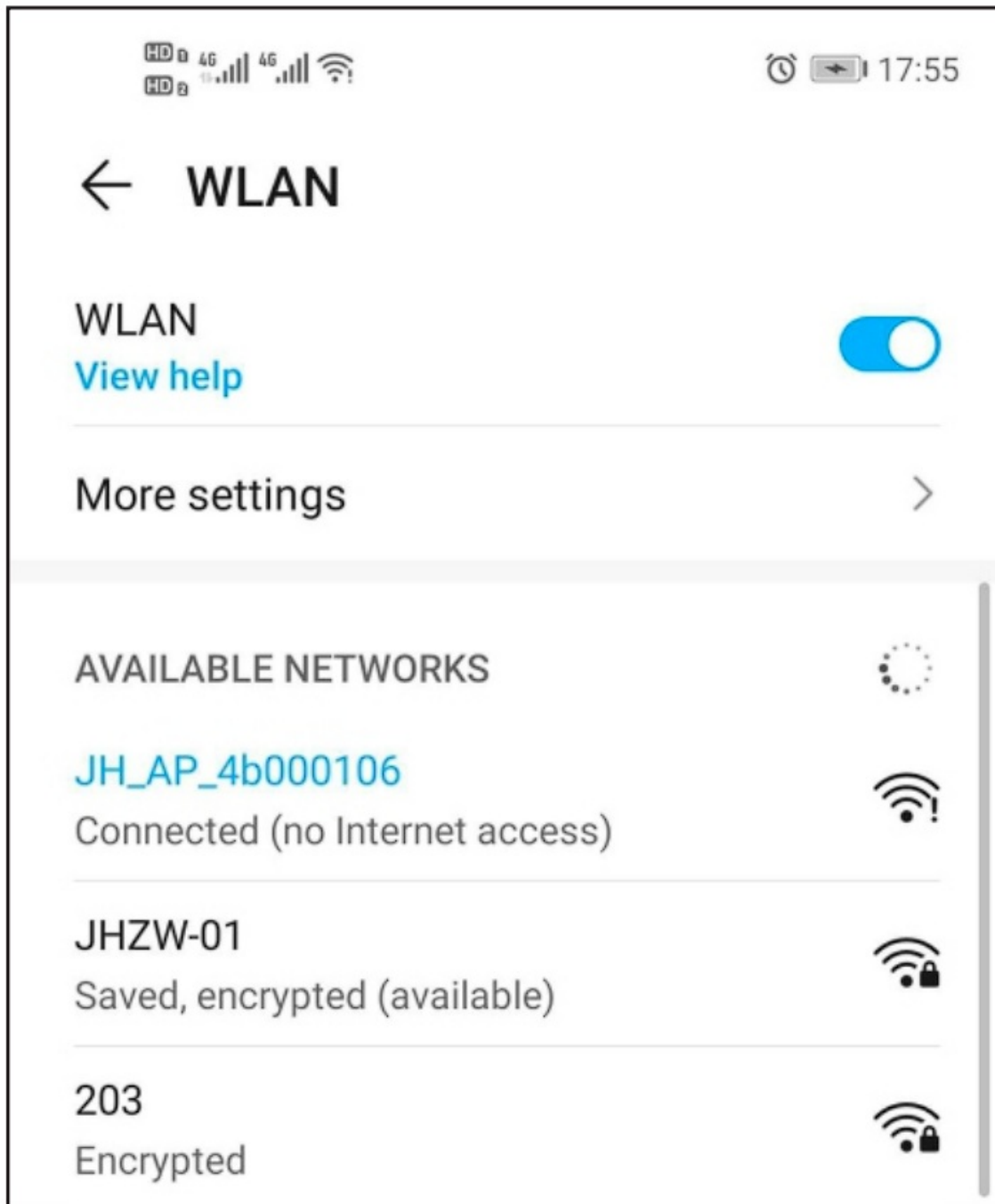


Note: Requirement for mobile phone system: Android 5.0 or above, IOS10.0 or above.

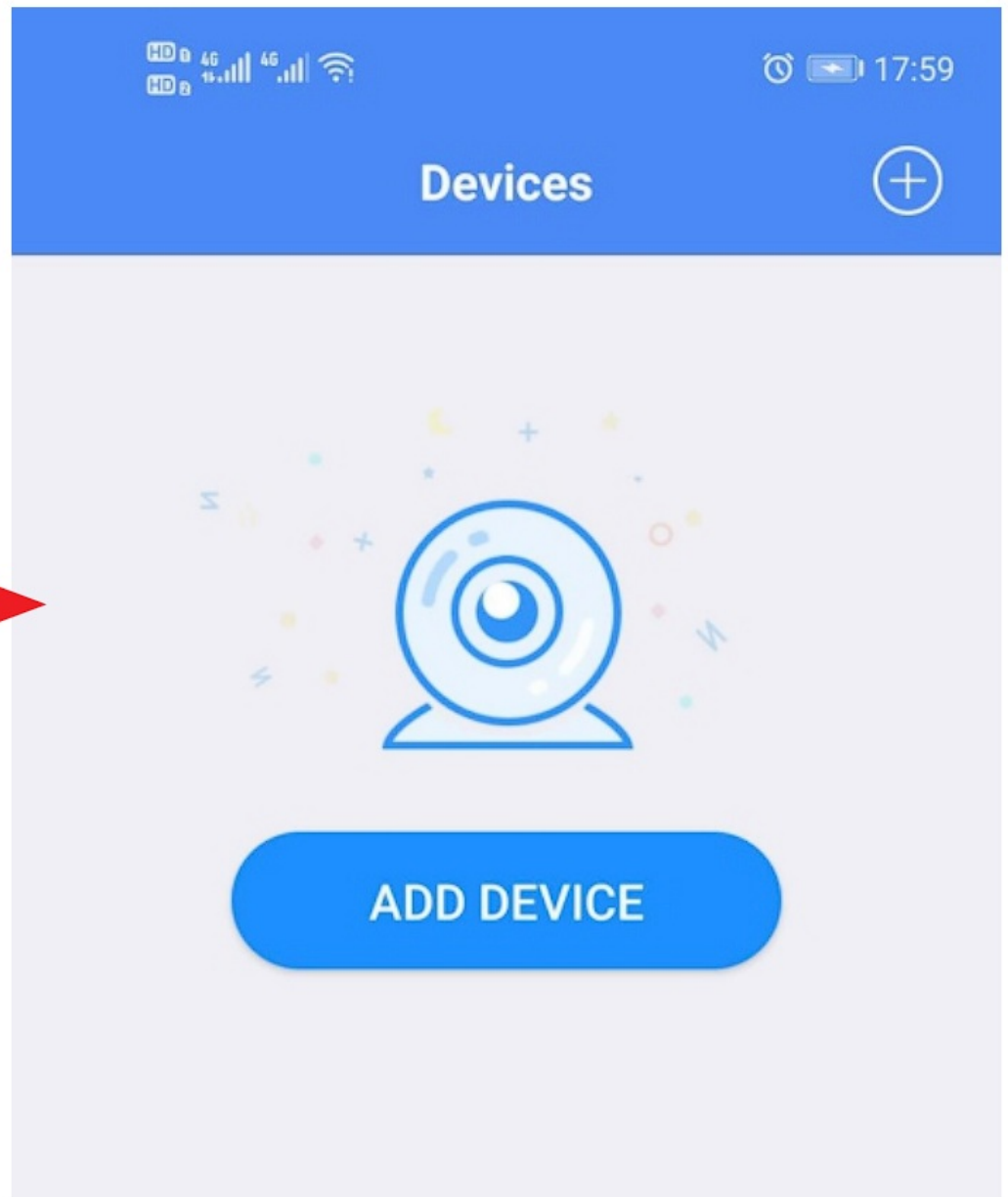
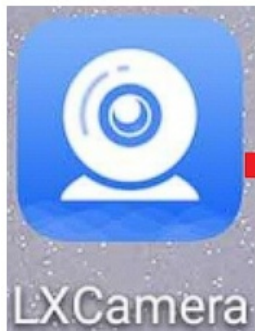
Wifi Connection


Press the camera power key” , the co”esponding blue indicator will start flickering (once per second), indicating that the device is waiting for network connection.

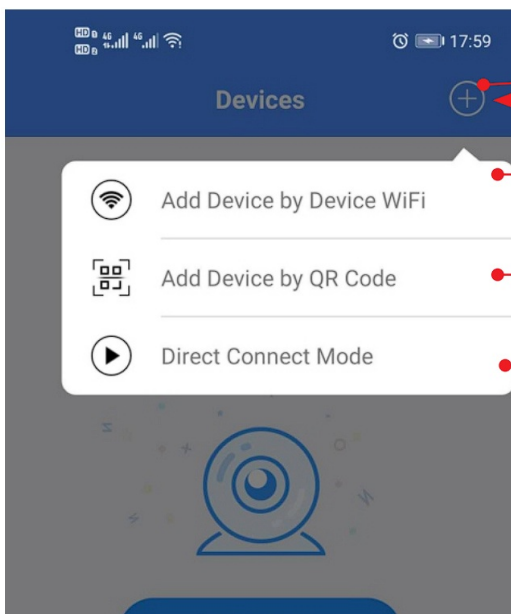
Open the mobi le phone set menu, find the WIFI setting option end then the • JH_AP _xxxxxxx• hotspot, click connection.



Open the APP to enter the main interface



Click  so that the connection options will pop up, oef.,ct "WiFi add d1Jvic,," to enter the interface forWiFi configuration.



- key for adding new device: click so that the device adding mode can pop up.
- WiFi adding device: connect CM4 devices to the Ethernet network of routers to realize remote wake-up, operation, monitoring and viewing etc.
- Scan QR code to add new device: When CM4 device administrator shares a device, you can check device access by adding device through scanning the QR code and the shared view of administrator
- Direct mode: Connect mobile phone WiFi to CM4 device hotspot "JH_AP_XXXXXXX" to realize short distance operation, monitoring and viewing, etc. Remote control is not supported.

Note: When connecting to the network, please select the network hotspot of 2.4G band. The device only supports 2.4G frequency WiFi, but 5G WiFi is not supported.

Select the name of the WIFI router which you plan to connect to and input WiFi password, then click “next step” to continue network connection.

HD 4G 4G

18:00

Configure WiFi

Select the WiFi you want to Connect to your device

📶 JHZW-01

Enter WiFi Password

🔒 JHZW2020715

☒ remember password

NEXT

Input name of the device (to name your camera), click “enter” to enter the device 11st Interface

HD 4G 4G

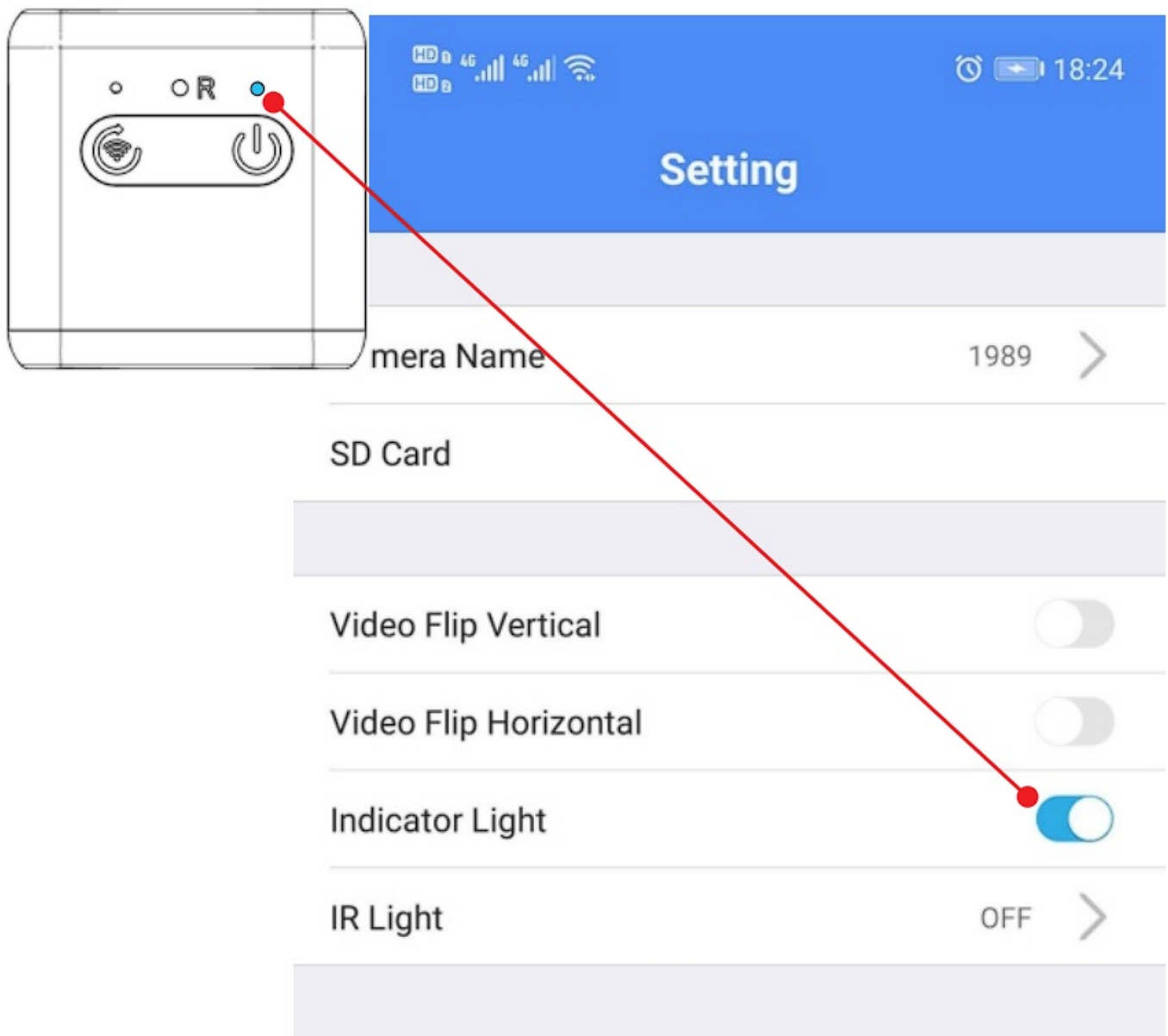
HD 18:20

Configure WiFi

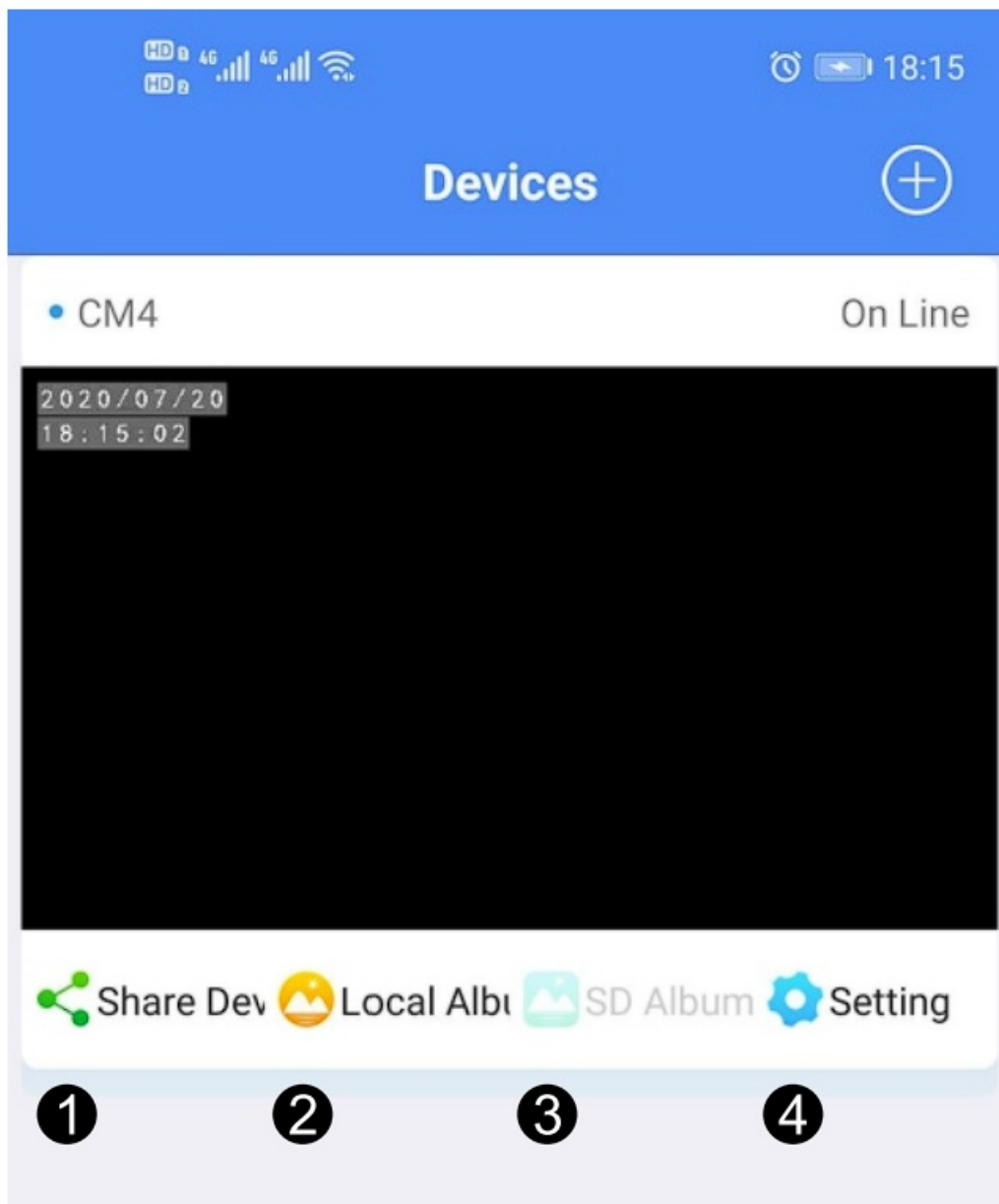
Device Name

CONFIRM

The blue light turns from flickering to constant light-up condition (The Indicator light can be turned off In the APF'), means successful WIFI connection.



Introduction to APP Functional Modules



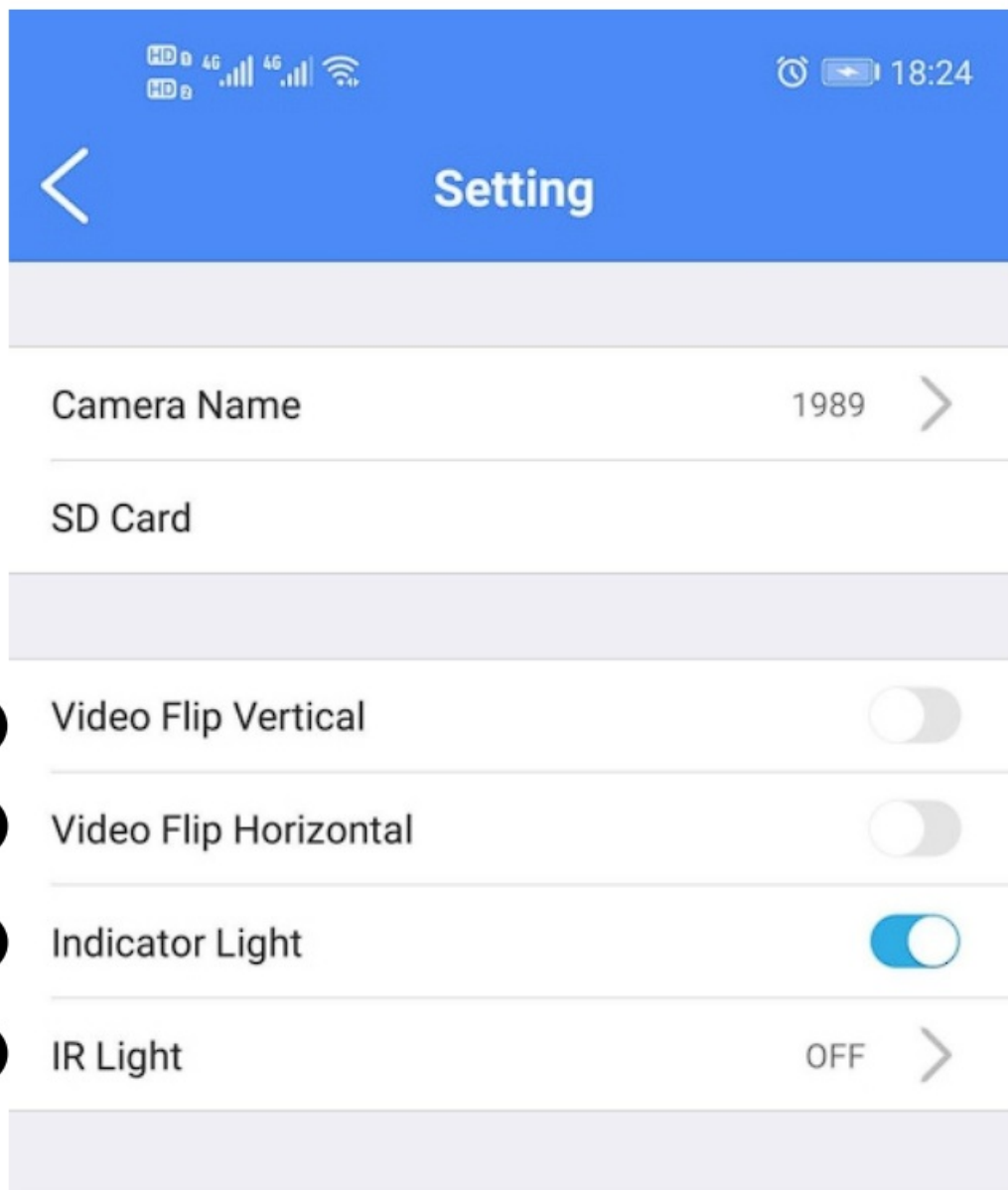
1. To share with other people through “share the device”.
2. View the videos and pictures saved to the mobile APP through the “local album”, click edit t<> select the video to share and delete.
3. view the video oaved to the SD card through “SD card Album” and oelect the video to download to the phone for storage.
4. To che cl< the device info rm a lion and relevan l function a l selling• through the “sat key”.

Description of Modules on Equipment Main Interface



1. To regulate for fluidity and clarity
2. Button for taking photo
3. Button for taking video
4. Switch for recording, off by default
5. Button for settings
6. Button for full screen
7. Icon for battery status
8. Return button

Explanation of the Function of Setting Interface.



1. initiated, there is vertical 180-degree mirror image.
2. Video horizontal turn: off by default, when it is initiated, there is horizontal 180-degree mirror image.
3. Indicator: on by default, the work indicating light will go out when the function is disabled.
4. Night vision light: off by default, it can be "enabled" manually or set as "automatic".
5. Time calibration: when "calibration" is enabled, time of the device will be synchronized with the time of the mobile phone.
6. Device re-start: to restart the device.
7. To format the SD card: all data saved in the SD card will be deleted after formatting.
8. Delete device: to delete the device from the APP.

IR Light

OFF



5 Time Calibration

6 Reboot Device

7 Format SD Card

Version Information

202007141618

8 Delete Device

Introduction of Device Functional Modules

1. Hibernation and Wake-up.

This function only works when the device is connected to the network.

1.1 Exit the APP interface and run or shut down the APP at the phone background, and the device will automatically enter the hibernation state within 1 minute.

1.2 Open the APP to automatically wake up the device to work through WiFi.

Note: In case of machine error or network problem which results in failure to wake up the machine, please firstly use the needle to click the reset key to shut down the device and then push the power key to start up the device. Then press the WiFi reset button for 3 seconds to reset WiFi, and the network needs to be reconfigured.

2. Cyclic Recording.

2.1 The video saves a video file every 3 minutes.

2.2 When storage space of the card runs out, the new recorded files will override the old files for cyclic recording.

3. Night-vision Infrared Light

3.1 The light can be turned on or turned off through detection of the ambient light realized by the light sensor or can be manually turned on or turned off through the APP.

3.2 The supplementary lighting of the night vision can cover an area of more than 3 meters.

3.3 When the infrared light is turned on, the document saved by video recording is grey image; when the infrared light is turned off, the document saved by video recording is colorized.

4. Support SD card. Support the memory capacity of 8GB-128GB, the format is FAT32 with class 10 .

Product Specification


Name	Mini camera	Model	CM4
Video format	MP4	Video resolution	1280x720P
WiFi frequency band	2.4 GB	Low energy consumption	ultra-long standby time 11. NI mote wake-up
Charging voltage	DC-5V	Charging port	Type-C
Storage capacity	256GB (max.)	Night vision	support

Contact us

If you have any Question, opinion or comment about our products, please send email to the following email ID and we will reply at the earliest time possible .

Email ID: support@darzu.co

FCC WARNING STATEMENT

	Warning: Changes or modifications not expressly approved by the party responsible for compliance could void the user's authority to operate the equipment .
---	---

NOTE: This equipment has been tested and found to comply with the limits for a Class B digital device, pursuant to Part 15 of the FCC Rules. These limits are designed to provide reasonable protection against harmful interference in a residential installation. This equipment generates, uses and can radiate radio frequency energy and, if not installed and used in accordance with the instructions, may cause harmful interference to radio communications.

However, there is no guarantee that interference will not occur in a particular installation. If this equipment does cause harmful interference to radio or television reception, which can be determined by turning the equipment off and on, the user is encouraged to try to correct the interference by one or more of the following measures:

- Reorient or relocate the receiving antenna.
- Increase the separation between the equipment and receiver.
- Connect the equipment into an outlet on a circuit different from that to which the receiver is connected.
- Consult the dealer or an experienced radio/TV technician for help.

This equipment must be installed and operated in accordance with provided instructions and the antenna(s) used

for this transmitter must be installed to provide a separation distance of at least 20 cm from all persons and must not be co-located or operating in conjunction with any other antenna or transmitter. End-users and installers must be provided with antenna installation instructions and transmitter operating conditions for satisfying RF exposure compliance.



Documents / Resources

	Shenzhen CM4 Mini hidden camera [pdf] User Manual CM4, 2AW4E-CM4, 2AW4ECM4, Mini hidden camera
---	---