


[Home](#) » [Shenzhen](#) » **Shenzhen BWCDs-HCQ1 Bluetooth Sound Control SPI Controller**
Instruction Manual 

Contents [[hide](#)]

- [1 Shenzhen BWCDs-HCQ1 Bluetooth Sound Control SPI Controller](#)
- [2 Product Parameter](#)
- [3 How to set the IC model and IC numbers:](#)
- [4 Detailed introduction of APP functions](#)
- [5 ATTENTIONS](#)
- [6 FAQs](#)
- [7 Documents / Resources](#)
 - [7.1 References](#)

Shenzhen

Shenzhen BWCDs-HCQ1 Bluetooth Sound Control SPI Controller



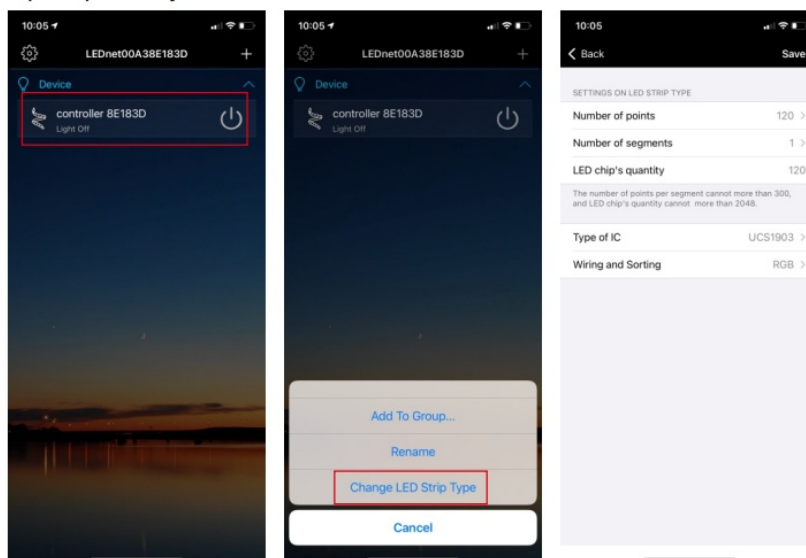
Product Parameter

- Category LED Controller

- Domination Principle BLUETOOTH 5.0
- APP Magic Home Pro
- Language Chinese English Japanese German
- Operation Platform Android 6.0 or IOS 11 or higher
- LED Drive Type SPI:WS2812B,SM16703,SM16704,WS2811,UCS1903
- ,SK6812,SK6812RGBW,INK1003,UCS2904B
- Input Voltage DC(5-24)V
- Max Output Power 144W
- Work For LED Strip
- Connect Method Common Anode
- Working Temperature -20~+55°C
- Control Distance Visible distance 40M
- Certification CE, RoHS, FCC
- Warranty 1 Year

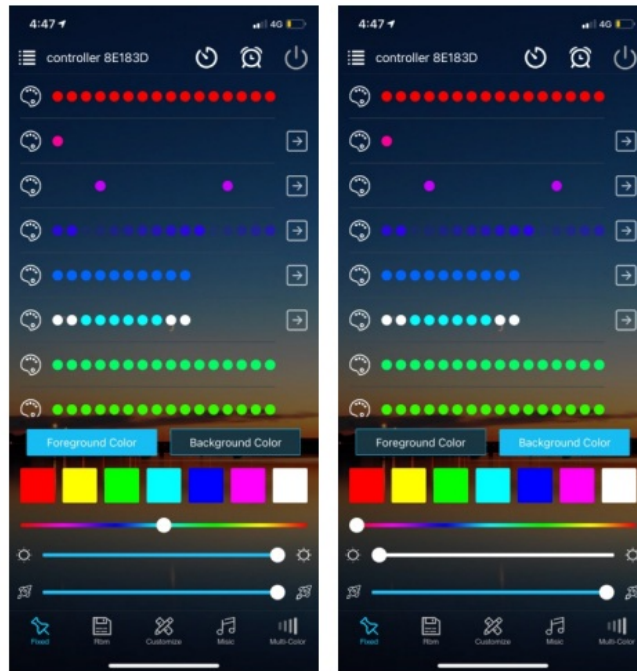
How to set the IC model and IC numbers:

Long press the device and click on “Change LED Strip Type” to set the IC model, Wiring and Sorting, Number of points, Number of segment(Total number of points can not exceed 300 in each segment and total LED chip’s quantity can not exceed 2048). On music mode, the total number of points in each segment and the total number of segment should be less than 150 points and 64 segments, the total LED Chip’s quantity should be less than 960.

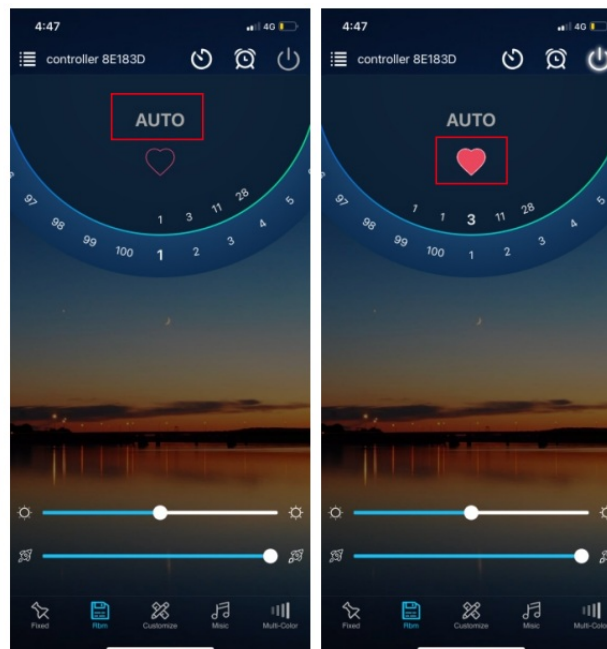


Detailed introduction of APP functions

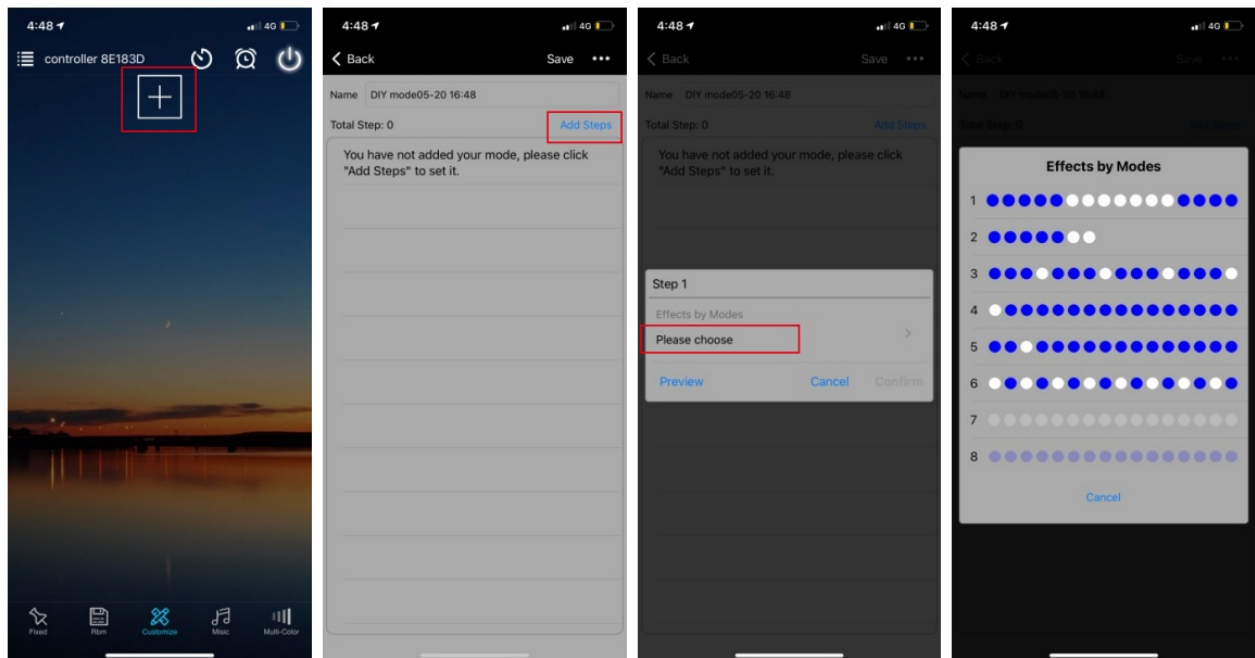
- **Fixed Mode** 10 fixed modes are built in, can change foreground and background color, adjust brightness, speed and direction freely.



- **Rbm Mode** 100 patterns of change, slide the ring to select pattern effect, and slide “a” or “l” for overall pattern effect brightness or speed settings. Click on “AUTO” to enter cycle mode or click on the heart icon to mark the favorite effect.

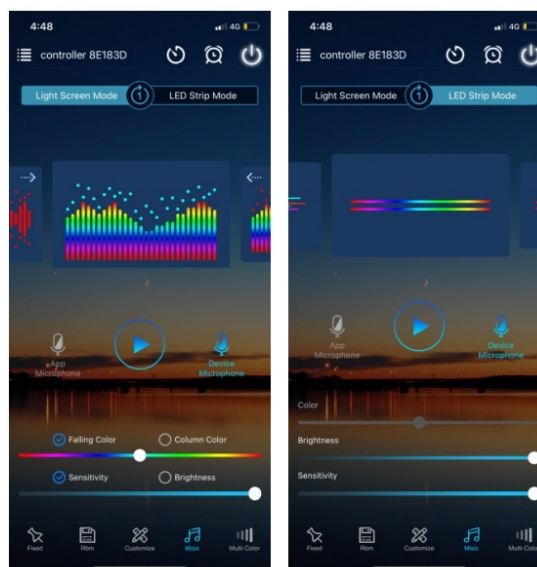


- **DIY Mode** Customized your own effects, click on” +” to choose your favorite effect and color then save it, now you can enjoy your own light effects at any time.



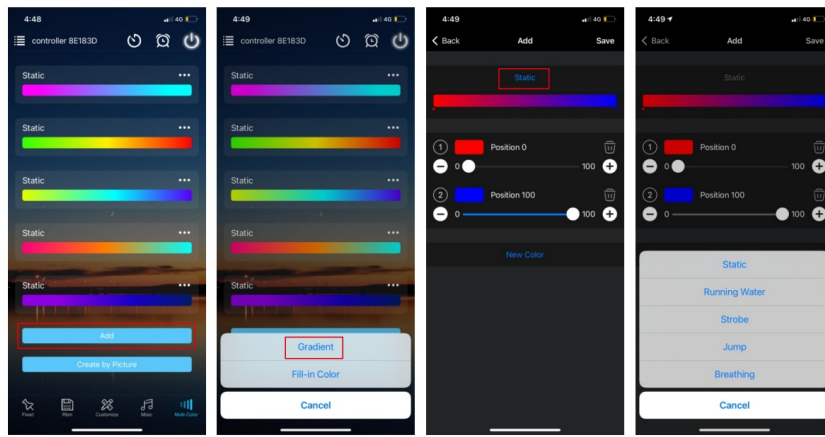
• Music Mode

1. In the light screen mode, you can choose the falling color, column color, sensitivity and brightness, which can be played circularly to achieve a more beautiful light effect.
2. In the LED Strip Mode, you can select the brightness and sensitivity. There are two ways to input the audio signal on the controller, built in APP microphone and external microphone.

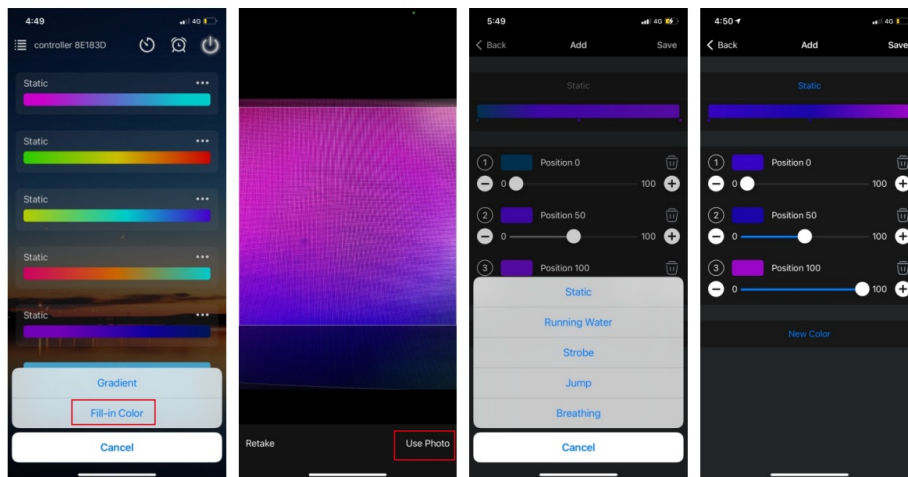


Multi color function

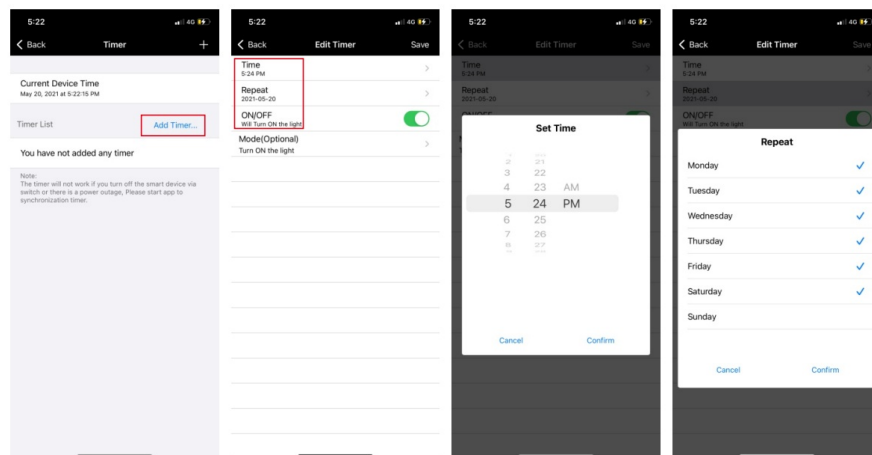
1. Can set each IC separately and set the lights with different modes 2 Optional dynamic modes for color lump gradient or mixed colors gradient:static, Asynchronous colors jumping, random color breathing, strobe and flow.



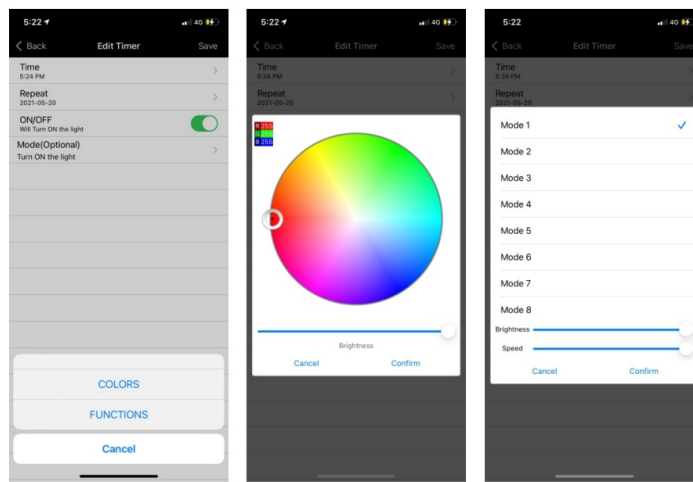
2. The area where the camera is aimed at is the coloring area, and the light color will changed accordingly.



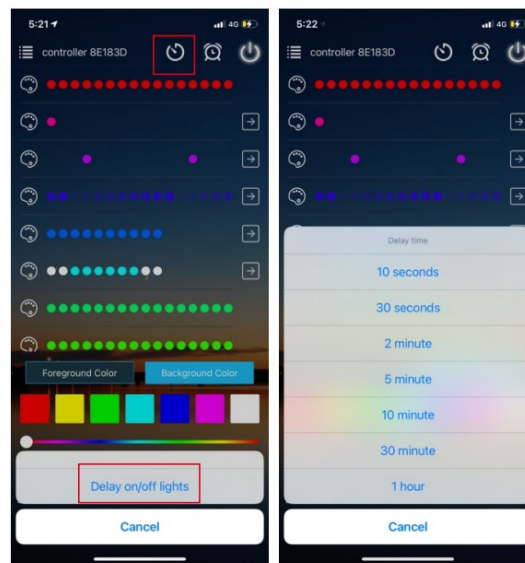
- **Timer function** Smart lights automatically come on and off at given times through the timer function.



- When setting the timer switch, you can select the color or dynamic mode and adjust the brightness and speed freely.



- **Delay on/off function:** The lighting delay on/off time can be set according to personal preference.



ATTENTIONS

1. Please use the product in a dry environment.
2. Please use the input voltage at 5-24V DC voltage, must not connect into 220V AC directly.
3. The product is requested common anode connection. The wrong connection will cause a malfunction.

FCC Warning:

This equipment has been tested and found to comply with the limits for a Class B digital device, pursuant to part 15 of the FCC Rules. These limits are designed to provide reasonable protection against harmful interference in a residential installation. This equipment generates, uses and can radiate radio frequency energy and, if not installed and used in accordance with the instructions, may cause harmful interference to radio

communications. However, there is no guarantee that interference will not occur in a particular installation. If this equipment does cause harmful interference to radio or television reception, which can be determined by turning the equipment off and on, the user is encouraged to try to correct the interference by one or more of the following measures:

- Reorient or relocate the receiving antenna.
- Increase the separation between the equipment and receiver.
- Connect the equipment into an outlet on a circuit different from that to which the receiver is connected.
- Consult the dealer or an experienced radio/TV technician for help.

Caution: Any changes or modifications to this device not explicitly approved by manufacturer could void your authority to operate this equipment. This device complies with part 15 of the FCC Rules. Operation is subject to the following two conditions:

1. This device may not cause harmful interference, and
2. this device must accept any interference received, including interference that may cause undesired operation.


This equipment complies with FCC radiation exposure limits set forth for an uncontrolled environment. This equipment should be installed and operated with minimum distance 20cm between the radiator and your body.

FAQs

What should I do if the product malfunctions?

If the product malfunctions, please contact our customer support for assistance.

Documents / Resources



Model Number: BWCDs-HCQ1
Product Name: Bluetooth sound control SPI controller (series)

1. Product Parameters:

Operating Voltage	3.3V/5V
Operating Current	10mA
Operating Temperature	-40°C~85°C
Storage Temperature	-40°C~125°C
Humidity	10%~90%
Shock Resistance	100g
Vibration Resistance	10g
Electrostatic Discharge	1000V
Lead-free	Yes

— 1 —

Shenzhen BWCDs-HCQ1 Bluetooth Sound Control SPI Controller [pdf] Instruction Manual

M-2835, 2A74E-M-2835, BWCDs-HCQ1 Bluetooth Sound Control SPI Controller, BWCDs-HCQ1, Bluetooth Sound Control SPI Controller, Sound Control SPI Controller, Control SPI Controller, SPI Controller, Controller

References

- [User Manual](#)

Shenzhen

2A74E-M-2835, Bluetooth Sound Control SPI Controller, BWCDs-HCQ1, BWCDs-HCQ1 Bluetooth Sound Control SPI Controller, Control SPI Controller, controller, M-2835, Shenzhen, Sound Control SPI Controller, SPI Controller

Leave a comment

Your email address will not be published. Required fields are marked *

Comment *

Name

Email

Website

☐ Save my name, email, and website in this browser for the next time I comment.

[Post Comment](#)

Search:

[Search](#)

[Manuals+](#) | [Upload](#) | [Deep Search](#) | [Privacy Policy](#) | [@manuals.plus](#) | [YouTube](#)

This website is an independent publication and is neither affiliated with nor endorsed by any of the trademark owners. The "Bluetooth®" word mark and logos are registered trademarks owned by Bluetooth SIG, Inc. The "Wi-Fi®" word mark and logos are registered trademarks owned by the Wi-Fi Alliance. Any use of these marks on this website does not imply any affiliation with or endorsement.