



Contents [[hide](#)]

- [1 Shenzhen AS2 Smart Mouse](#)
- [2 Product Introduction](#)
- [3 Product Overview](#)
- [4 Software Download](#)
- [5 Device Connect](#)
- [6 Function Introduction](#)
- [7 M key setting](#)
- [8 Documents / Resources](#)
 - [8.1 References](#)



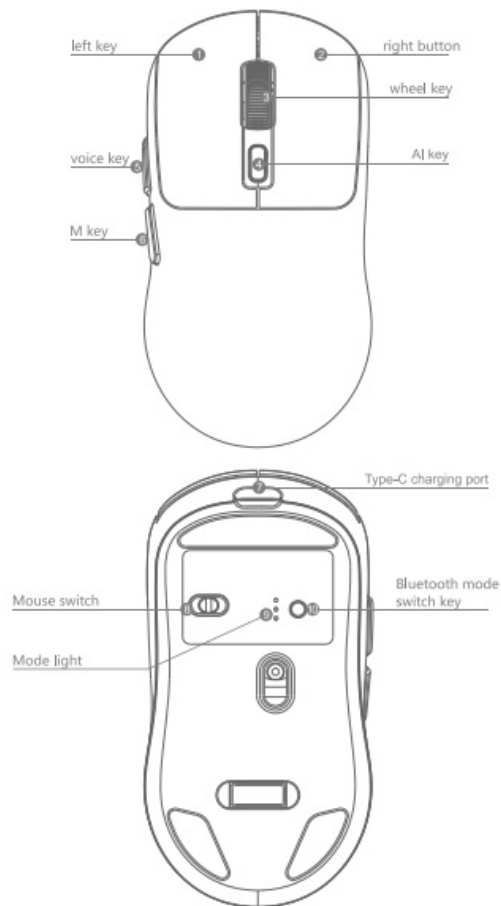
Shenzhen AS2 Smart Mouse



Product Introduction

AS-2 AI intelligent mouse is an intelligent voice mouse that combines intelligent software and hardware. By adopting AI cloud service technology and combining it with GS Life application, it has functions such as voice typing, voice translation, voice assistant, stroke translation, screenshot translation, etc.

Product Overview



Software Download

*The voice function and M-key customization function of this product need to be implemented in conjunction with GS Life software. Please download and install.

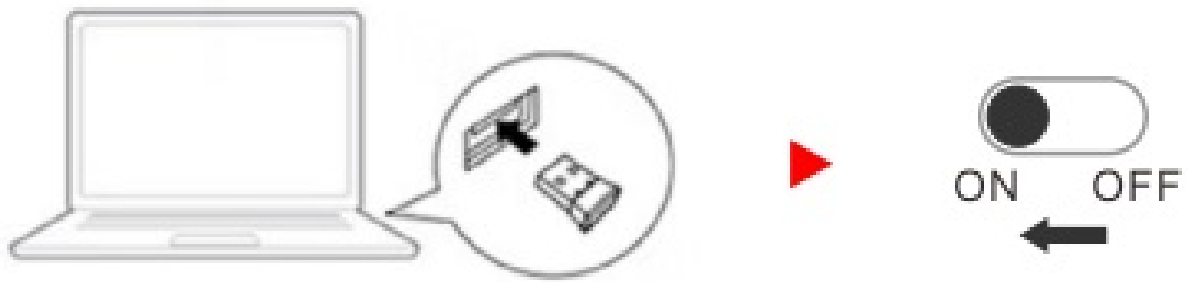
Windows system

Login URL: <https://www.gssdfit.com/index/pc/download>. Download the driver software version corresponding to the computer system. Long press and hold the mouse wheel button for 5 seconds, and the software download page will automatically pop up on the computer (some computers do not support this feature).

Mac OS system

Login URL: <https://www.gssdfit.com/index/pc/download>. Download the driver software version corresponding to the computer system.

Device Connect



After inserting the wireless receiver into the USB port of the computer, turn the mouse on and off to the “ON” position. After a successful connection, the “GS Life” function page will be displayed.

When the user is not connected to the connector or has poor contact, the page will pop up a message indicating that it is not connected.

Function Introduction

Voice typing

The user holds down the “voice button” and speaks to the mouse, then releases it to end voice typing, which means the voice quickly changes to text.

Intelligent Writing

After pressing the AI button, open the intelligent writing page.

Translate typing

Set the M key function to translate typing. Press and hold the M key to speak to the mouse, and the voice will be directly converted into translated content, which can be translated into multiple languages. The specific language is subject to the language of the downloaded version.

intelligent search

Search engine search: This feature presents search results in search engines based on voice content.

1. Long press the voice button on the lower left side of the mouse, wait for the “voice” prompt to pop up, and speak into the microphone (microphone device is subject to software settings) to say the content you want to search for;

2. The computer automatically opens the default browser, searches in the preset search engine, and outputs search results.

Quick voice command: This feature is opened through voice control to install and create shortcuts on the desktop software.

1. Long press the voice button on the lower left side of the mouse, wait for the “voice” prompt to pop up, and speak the complete software name into the microphone (microphone device is subject to software settings);
2. The target software will be opened.


Command word control: This feature allows you to search based on the command word content you have set on your computer

- (a) Enter the “Voice Search” interface of the software to set command words, and enter the command words in the “Command Words” input box;
- (b) Select the target type, including program/file, folder, and website;
- (c) Click [Select] to select the target file, or copy and paste the target file path into the input path box;
- (d) Click [Add] to complete the instruction settings;
- (e) Press and hold the search key to say the command word.

M key setting

M key is a custom key: M can be set as a custom key in the software.

1. Enter the software’s’ M key settings’ interface.
2. Select the functions that need to be set. Optional features include: Enter, One Click Baidu, Return to Desktop, Window Switching, Voice Search, Voice Translation, and Screen Capture Translation.
3. Mouse settings: DPI (Mouse Sensitivity) settings: Open the software and enter the “My Settings” interface, select the desired DPI

- **Product model:** AS-2
- **Execution standard:** GB4943.1-2022
- **Working mode:** Optical sensor
- **Charging voltage:** 5V  1A

- **Working voltage/current:** 3.7V/20mA
- **Button:** 5 buttons+1 scroll wheel
- **Size:** 116 * 60.8 * 38mm
- **Effective operating range:** approximately 10 meters
- **System requirements:** Windows 7/8/10 or macOS 10.15 or above



Attention: When using the product, please avoid placing the indicator light near the eyes of children or animals.

Built-in lithium battery, please do not disassemble it by yourself!



FCC WARNING device complies with part 15 of the FCC Rules. Operation is subject to the following two conditions:

1. This device may not cause harmful interference, and
2. This device must accept any interference received, including interference that may cause undesired operation.

Any changes or modifications not expressly approved by the party responsible for compliance could void the user's authority to operate the equipment. NOTE: This equipment has been tested and found to comply with the limits for a Class B digital device, pursuant to Part 15 of the FCC Rules. These limits are designed to provide reasonable protection against harmful interference in a residential installation.


This equipment generates, uses and can radiate radio frequency energy and, if not installed and used in accordance with the instructions, may cause harmful interference to radio communications.

However, there is no guarantee that interference will not occur in a particular installation. If this equipment does cause harmful Interference to radio or television reception, which can be determined by turning the equipment off and on, the user is encouraged to try to correct the Interference by one or more of the following measures:

- Reorient or relocate the receiving antenna.
- Increase the separation between the equipment and receiver.
- Connect the equipment into an outlet on a circuit different from that to which the receiver is connected.
- Consult the dealer or an experienced radio/TV technician for help.

To maintain compliance with the FCC’s RF Exposure guidelines, this equipment should be installed and operated with a minimum 20cm distance between the radiator and your body. Use only the supplied antenna.

Documents / Resources

	Shenzhen AS2 Smart Mouse [pdf] User Manual 2A9M6-AS2, 2A9M6AS2, AS2 Smart Mouse, AS2, Smart Mouse, Mouse
---	---

References

- [User Manual](#)

2A9M6-AS2, 2A9M6AS2, AS2, AS2 Smart Mouse, mouse, Shenzhen, Smart
Shenzhen Mouse

Leave a comment

Your email address will not be published. Required fields are marked *

Comment *

Name

Email

Website

☐ Save my name, email, and website in this browser for the next time I comment.

Post Comment

Search:

e.g. whirlpool wrf535swhz

Search

[Manuals+](#) | [Upload](#) | [Deep Search](#) | [Privacy Policy](#) | [@manuals.plus](#) | [YouTube](#)

This website is an independent publication and is neither affiliated with nor endorsed by any of the trademark owners. The "Bluetooth®" word mark and logos are registered trademarks owned by Bluetooth SIG, Inc. The "Wi-Fi®" word mark and logos are registered trademarks owned by the Wi-Fi Alliance. Any use of these marks on this website does not imply any affiliation with or endorsement.