



# Shenzhen Zigxico Technology ZC-X2-W31 Smart Indoor Camera User Manual

[Home](#) » [Shenzhen Zigxico Technology](#) » Shenzhen Zigxico Technology ZC-X2-W31 Smart Indoor Camera User Manual 

## Contents

- [1 ZC-X2-W31 Smart Indoor Camera](#)
  - [1.1 Frequently Asked Questions](#)
  - [1.2 System Requirements](#)
  - [1.3 Technical Specifications](#)
  - [1.4 What's in the Box](#)
  - [1.5 Get Ready](#)
  - [1.6 3 Plug in](#)
  - [1.7 FCC Warning Statement](#)
- [2 Documents / Resources](#)
- [3 Related Posts](#)

## ZC-X2-W31 Smart Indoor Camera

### SMART INDOOR CAMERA USER MANUAL

## Frequently Asked Questions

### 1 cant share with family and friends?

Yes, you can share your cameras with family and friends who will have access to view the camera and control your bulbs, plugs, and other devices. In the app, press the Profile button and click on the “Home Management” button, and you will be able to give or revoke sharing permissions. In order to share, the other user should already have downloaded the app and registered a new account,

### 2 what's the Wireless Range?

The range of your home WiFi is heavily dependent on your home router and the conditions of the room. Check with your router specifications for exact range data.

### **3 The device appears offline or unreachable?**

Make sure your WF router is online and in range. Make sure you have the latest app functionality by clicking "Check for firmware update" in your device settings.

### **4. Cannot connect to your Wi-Fi network,**

Make sure you entered the connect Wi-Fi password 'during the Wi-Fi setup, Check whether there are any internet connection problems. the Wi signal is too weak, reset your WHF outer and ty again.

### **5 How many cameras can control?**

"TuyaSmart app can contra an unlimited amount of devices in an unlimited amount of location. Your router may have a limit of how many devise can be connected to any router.

## **System Requirements**

- Mobile device running iOS® 8 or higher or Android™ 4caxor higher
- Existing WHF Network

## **Technical Specifications**

- Camera: up to 1080p (1920×1080) at 20 frames / sec. H264 encoding
- Audio: ltermal Speaker and Microphone
- Storage: supports up to 128G Micro SD card (not included)
- Wai: IEEE 602.11bigin, 2.4GHz(not competitor with SGHz WHF networks)

### **4 Add device**

- Read the instruction about "Sean with the camera', click "Continue,



- Scan the QR Code on your phone with camera, Heard a prompt tone, dick “Heard the beep”,



#### 4 Add device

- When the indicator light on the device turns from flashing red light to steady green light, the network configuration is complete.



- Please refer to the specific APP interface if there are any difference.

Thank you for purchasing Smart Camera. Get started using your new devices by downloading TuyaSmart, one convenient app that manages everything straight from your phone. Easily connect to your home Wi-Fi and control multiple devices from the touch of your fingertips.

#### What's in the Box

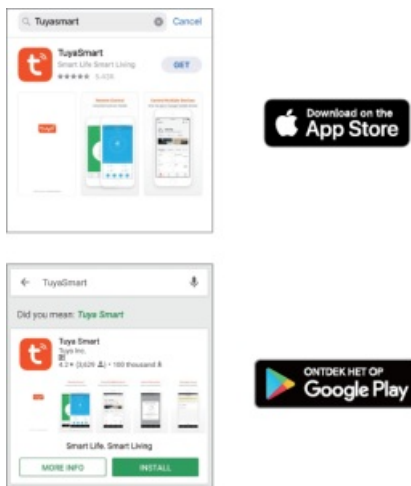
- Smart Camera x1
- USB Cable x1
- User Manual x1
- 3M Adhesive x1
- Reset pin x1
- Adapter x1

Different products have different accessories, please refer to physical packing.

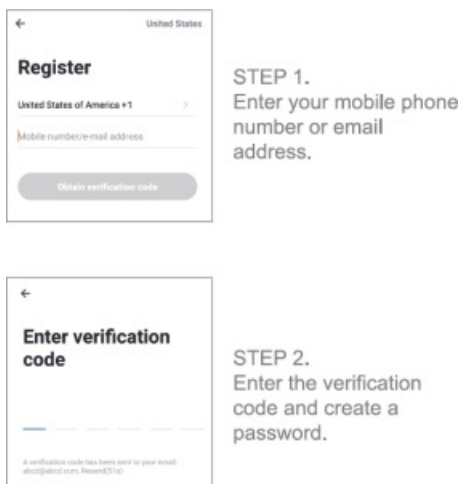
## Get Ready

- Know your WiFi network and password
- Make sure your mobile device is running iOS® 8 or higher or Android™ 4.1 or higher
- Make sure you're connecting to a 2.4GHz W-Fi network (It can't connect to 5GHz networks)

### 1 Download the TuyaSmart app from App Store or Google Play.



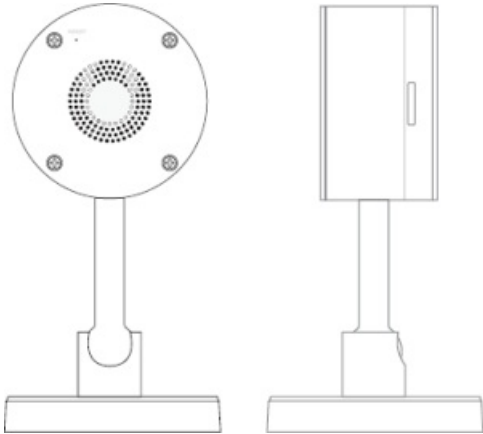
### 2 Register an account on your TuyaSmart app



### 3 Plug in

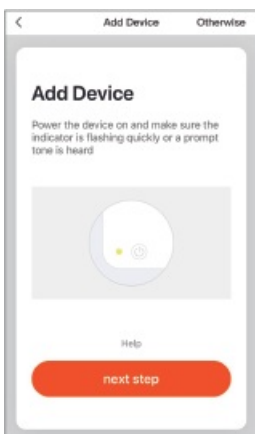
How do I reset my device?

- Use the reset pin to press the Reset Button (as pic 1) for several seconds until the camera starts to beep.
- Optional: Insert Micro SD card as shown in pic 2

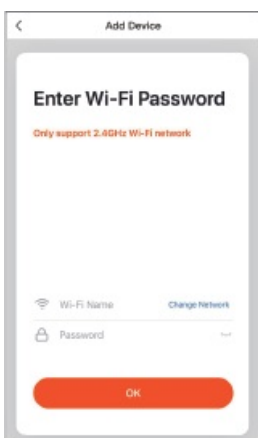


#### 4 add device

- Open TuyaSmart APP, click “+” on the top right corner of the page “HOME”, then select “Smart Camera”
- Make sure the indicator light on the device is flashing red quickly, then press “Next Step”.



- Enter your “Wi-Fi network and password”, click “OK,”



## FCC Warning Statement


Changes or modifications not expressly approved by the party responsible for compliance could void the user's authority to operate the equipment. This equipment has been tested and found to comply with the limits for a Class B digital device, pursuant to Part 15 of the FCC Rules. These limits are designed to provide reasonable protection against harmful interference in a residential installation. This equipment generates uses and can radiate radio frequency energy and, if not installed and used in accordance with the instructions, may cause

harmful interference to radio communications. However, there is no guarantee that interference will not occur in a particular installation. If this equipment does cause harmful interference to radio or television reception, which can be determined by turning the equipment off and on, the user is encouraged to try to correct the interference by one or more of the following measures:

— Reorient or relocate the receiving antenna. — Increase the separation between the equipment and receiver.  
RESET

—Connect the equipment into an outlet on a circuit different from that to which the receiver is connected.  
— Consult the dealer or an experienced radio/TV technician for help. This device complies with part 15 of the FCC Rules. Operation is subject to the following two conditions: (1) This device may not cause harmful interference, and (2) this device must accept any interference received, including interference that may cause undesired operation. RF Exposure Statement To maintain compliance with FCC’s RF Exposure guidelines, This equipment should be installed and operated with minimum distance of 20cm the radiator your body. This device and its antenna(s) must not be co-located or operation in conjunction with any other antenna or transmitter.

**Documents / Resources**

	<p><a href="#">Shenzhen Zigxico Technology ZC-X2-W31 Smart Indoor Camera</a> [pdf] User Manual ZC-X2-W31, ZCX2W31, 2AZHU-ZC-X2-W31, 2AZHUZCX2W31, ZC-X2-W31 Smart Indoor Camera, Smart Indoor Camera, Indoor Camera, Camera</p>
---	---