



Shenzhen Youjia Innov Tech MINIEYEC1 MINIEYE AI Collision Avoidance Device User Guide

[Home](#) » [Shenzhen Youjia Innov Tech](#) » Shenzhen Youjia Innov Tech MINIEYEC1 MINIEYE AI Collision Avoidance Device User Guide 

Contents

- [1 Shenzhen Youjia Innov Tech MINIEYEC1 MINIEYE AI Collision Avoidance Device](#)
- [2 Product Appearance and Components](#)
- [3 Installation Guide](#)
- [4 Activate Anti-Collision Functions](#)
- [5 Anti-collision functions setting](#)
- [6 Video Preview/Playback/Share](#)
- [7 Cautions](#)
- [8 Documents / Resources](#)
- [9 Related Posts](#)

MINIEYE

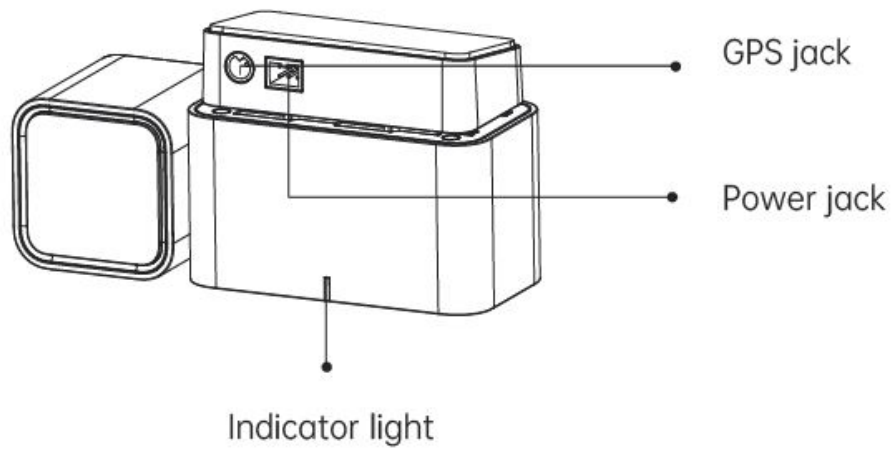
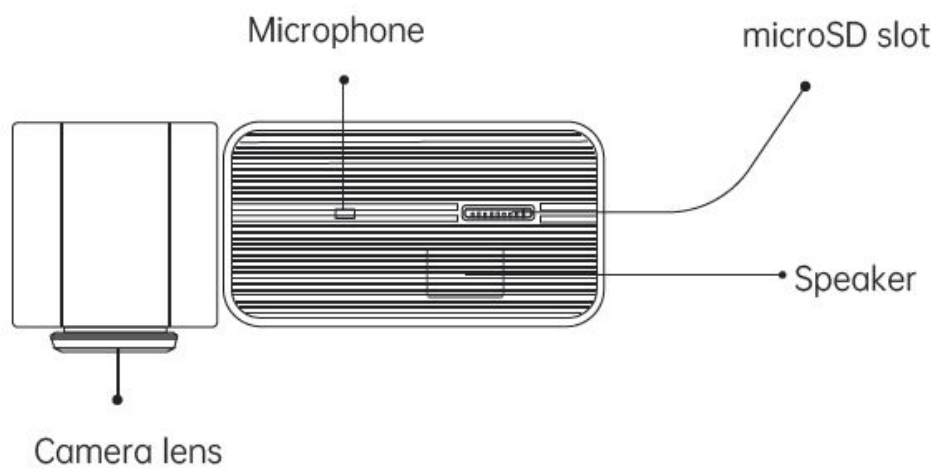
Shenzhen Youjia Innov Tech MINIEYEC1 MINIEYE AI Collision Avoidance Device



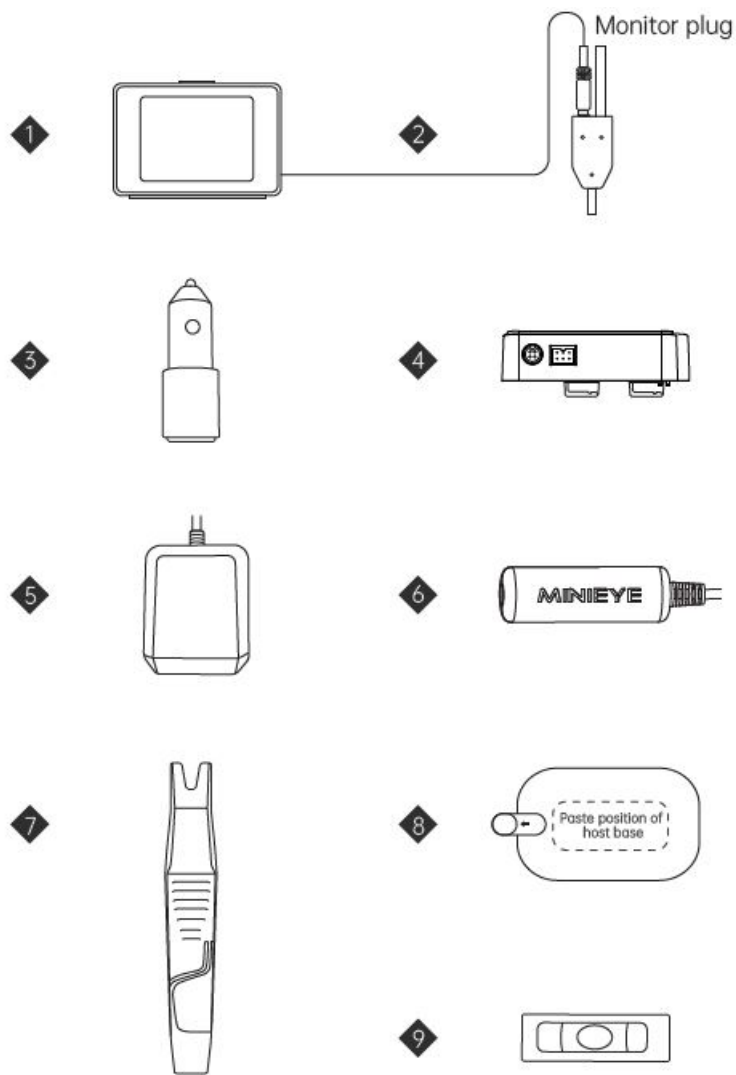
1. Please use the mobile APP “MINIEYE International” to complete product operation and configuration.
2. You can scan the QR code on the right or search ” MINIEYE International ” in iOS/Android App Store to download and install it.
3. Follow the directions of the APP, you can connect to the AI Collision Avoidance Device for setting.

Product Appearance and Components

Main unit



Components

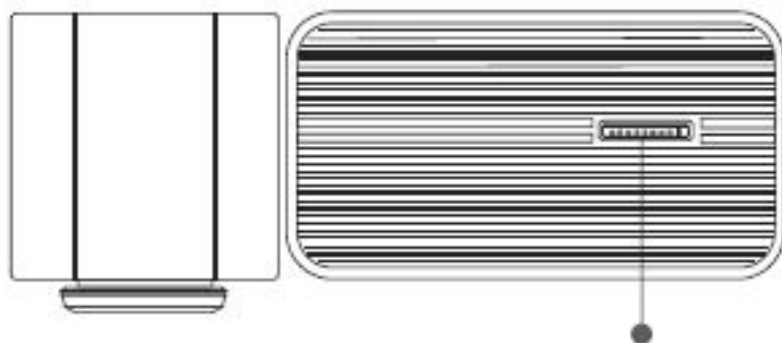


1. Monitor (Optional)
2. Power cable
3. Monitor cable (Optional)
4. Car charger
5. Host base
6. GPS module
7. Parking monitoring cable (Buy separately)
8. Crowbar
9. Electrostatic sticker Bubble level

Installation Guide

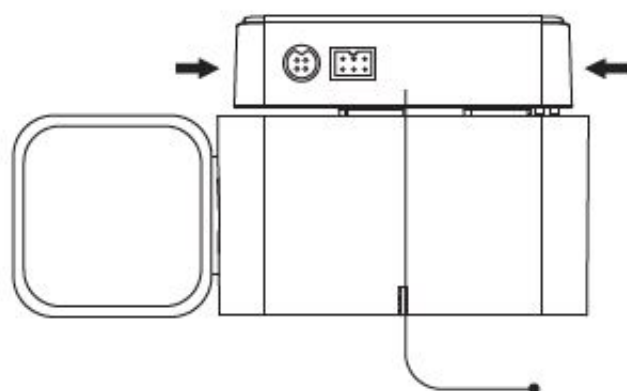
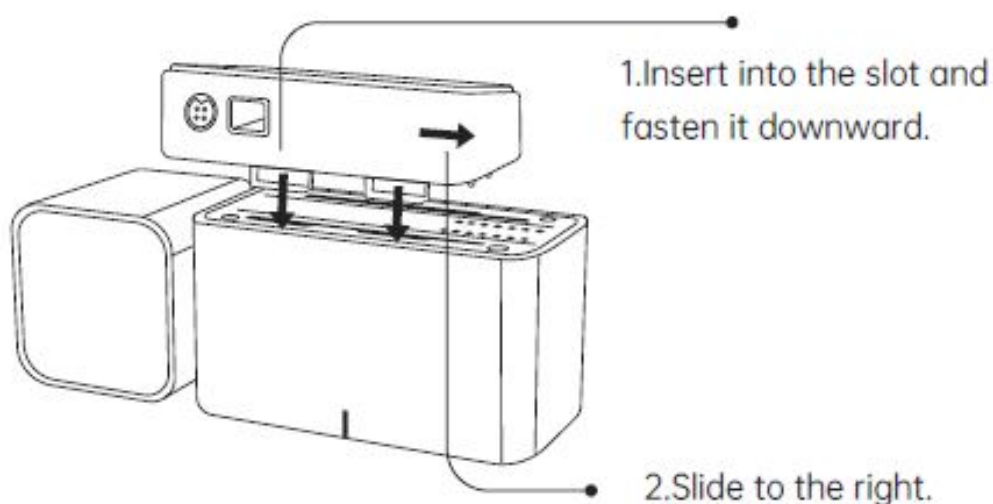
The normal operation of the intelligent multi-function warning device depends on accurate and rigorous installation. Before installing this product, please check the installation guide or video carefully to avoid trouble caused by installation errors.

Step 1: Take out the device main unit and insert a microSD card into the host.

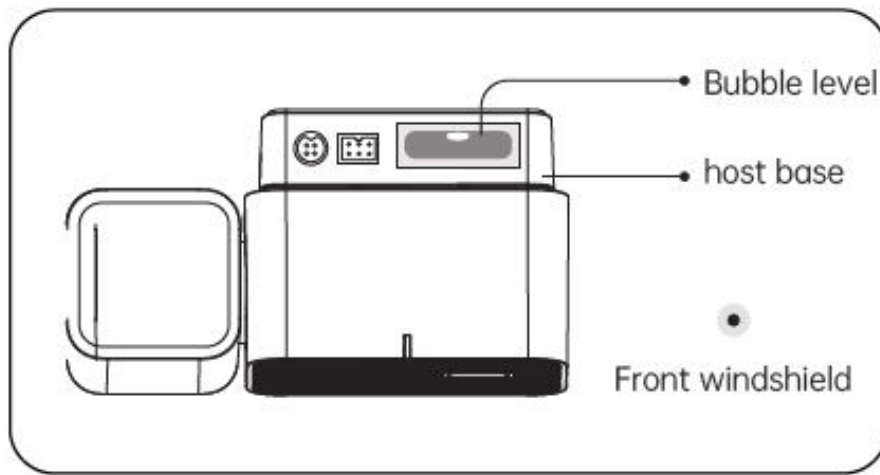


Insert a microSD card here.

Step 2: Insert the host base into the corresponding slot on the top of the main unit, fasten it downward and slide to the right until the host base is completely centered in position and cannot slide further, indicating that the two components have been combined in place.



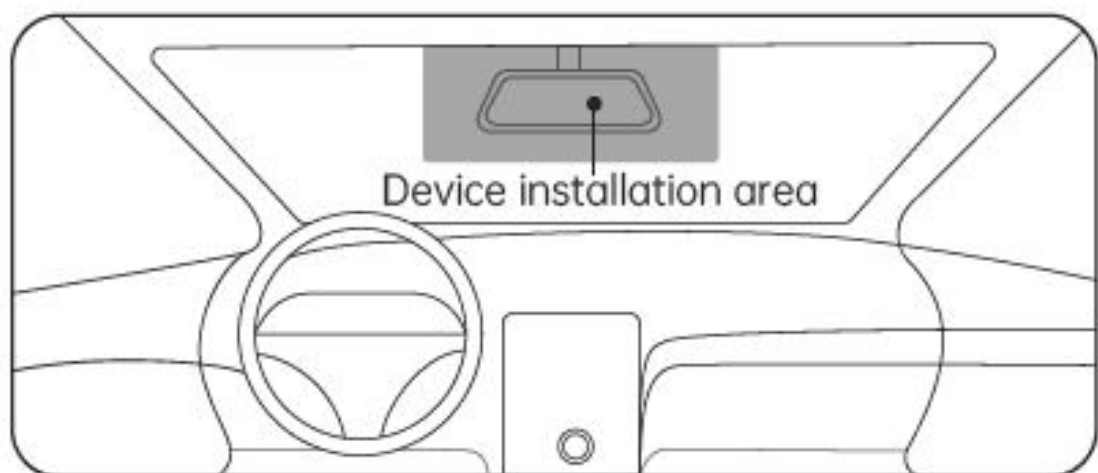
Step 3: Paste the bubble level to the indicated position of the host base. Be sure that the level air bubble is centered during installation.



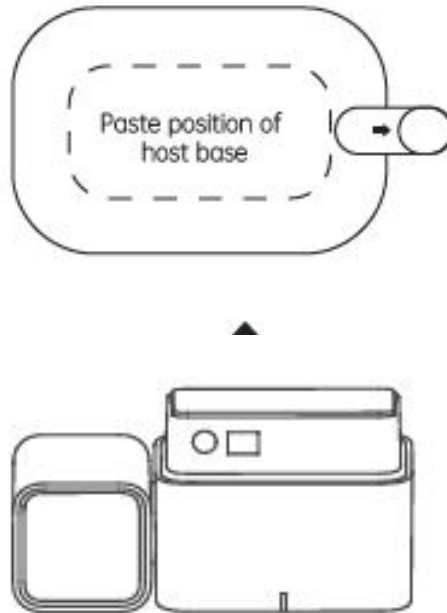
Be sure that the level air bubble is centered during installation.

Step 4:For optimal product functionality, please ensure the following installation conditions.

1. There is no visual obstruction in front of and around the camera (such as rearview mirror box cover or plating), and the wiper can cover the area for cleaning.
2. Try to install as close to the center above the windshield as possible. Pay attention to the host base to reserve enough space for the cable outlet.
3. The windshield at the installation position must be kept clean and dry. Paste the electrostatic sticker : take out the electrostatic sticker in the packing box and peel off the release film, and paste it on the front glass in the recommended host installation area as shown in the figure below. Please pay attention to the gap between the electrostatic sticker and the glass when pasting. Air bubbles are squeezed clean. Install the device main unit: Adjust the device to ensure a horizontal position (refer to whether the air bubble of the level is in the center). After confirming the position and direction, remove the protective film of 3M glue on the host base, paste the device onto the electrostatic sticker and press hard to make it stable.



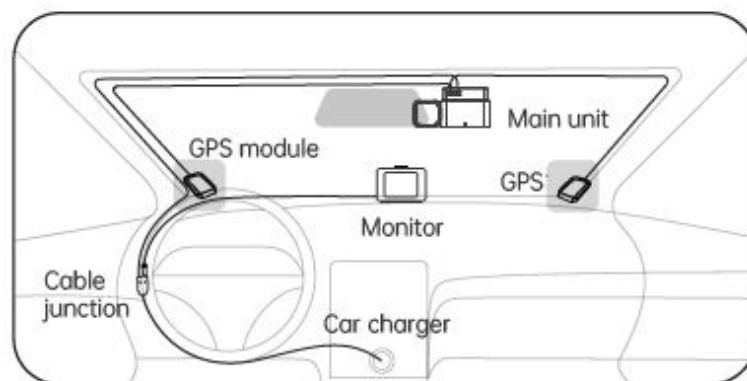
1. Paste electrostatic sticker on the glass, behind the rear-view mirror is recommended (as shown above).
2. Paste the main unit on the electrostatic sticker and press it firmly.



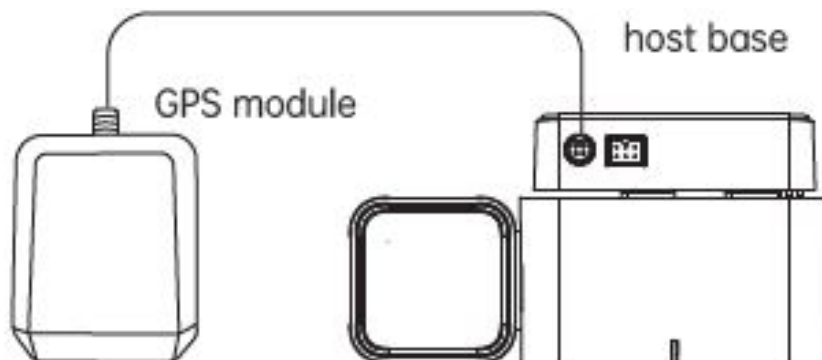
Warm Tip: There may be a microwave window (i. e. black grid area) in the device installation area. Please avoid that area because electrostatic sticker cannot be effectively pasted on non-smooth flat. If it is unavoidable to be installed there, just paste the device onto the glass directly without electrostatic sticker.

Step 5:

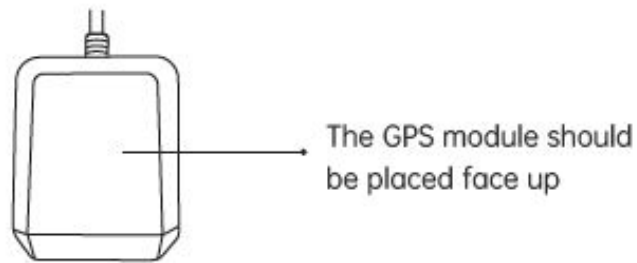
1. Please place the GPS module on the dashboard near the left or right A-pillar, cable routing can be as shown in the figure.



2. Insert the cable plug into the GPS jack on the host base as shown in the figure.



3. The GPS module should be placed face up as shown in the figure.

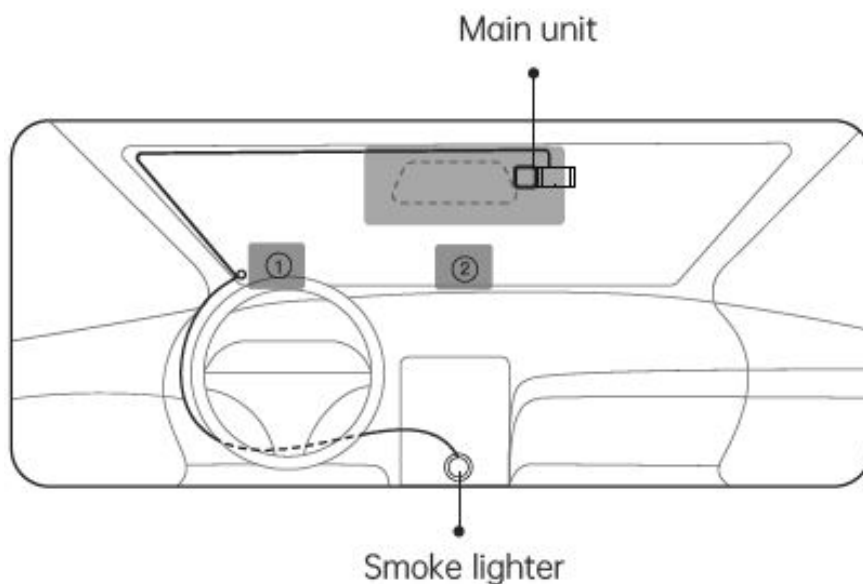


Important Note: To ensure accurate warning of dangerous road conditions, please place GPS module according to the following tips: Face up: The GPS module should be placed face up.

Keep distance: The GPS module should be placed at least 20 cm away from the monitor. Do not hot plugin or out: After ensuring that the GPS module is connected to the main unit, then turn on the power according to step 6.

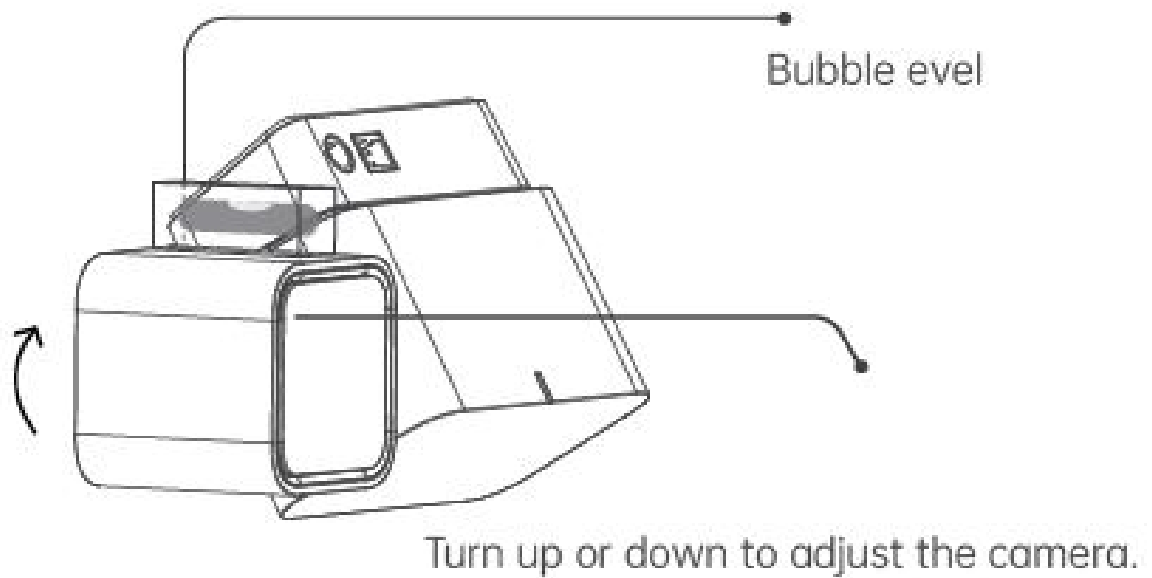
Step 6:

1. The recommended placement position of the monitor is shown in 1 and 2, with high- quality 3M glue to ensure a stable state during normal driving. If the monitor is placed at position 1, please route the cables on the left side of the driver as shown in the figure; if the monitor is placed at position 2, the left and right cables can be routed.



Important Note: If the monitor is too close to the windshield, it may cause reflection on the windshield, which may affect the product functionality under some specific driving scenes and affect your experience. Please choose to place it away from the front windshield as far as possible.

Step 7: Please turn the camera up or down to make it facing forward horizontally (it can be confirmed with the bubble level).



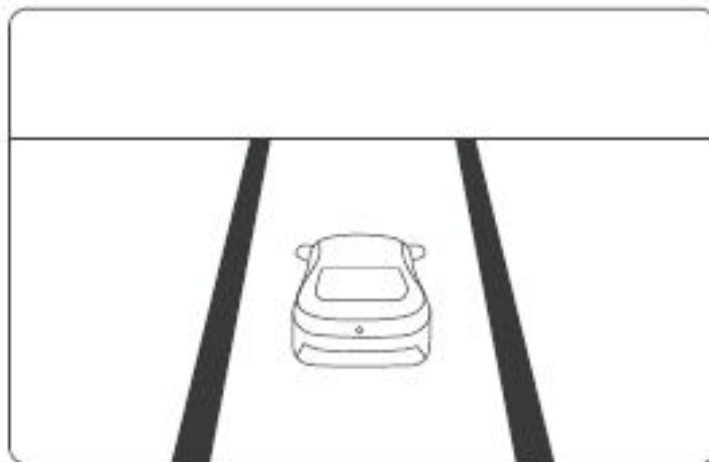
Step 8: Start the car, the product will automatically turn on, and a power-on prompt sound will be issued, and the continuous video storage will begin. Please use the mobile APP to complete the screen adjustment and personalized configuration.

Warm Tip: If you purchase a parking monitoring cable separately, please refer to the installation guide in the parking monitoring cable package to install.

Activate Anti-Collision Functions

Step 1: Activation Condition

In order to activate the collision avoidance functions successfully, please park your car on the horizontal ground (do not parking on ramps or sloping roads).



2

Step 2: Authorize Connection

1. While the device is on, add your MINIEYE AI Collision Avoidance Device in the APP "Device" page — click the "+" button.

2. In the Wi-Fi list, select the Wi-Fi with the name like “MINEYE-De-vice ID” to connect, and the default password is 1234567890 (Device ID can be viewed at the bottom of the package). If your Android phone pops up a prompt box asking whether to continue using the wireless network, please select Continue.
3. When the connection is done, the device will ask for user authorization to ensure APP-to-Device communication security. Click the button on the top of the monitor or enter the voice verification code.

Step 3:APP Activation

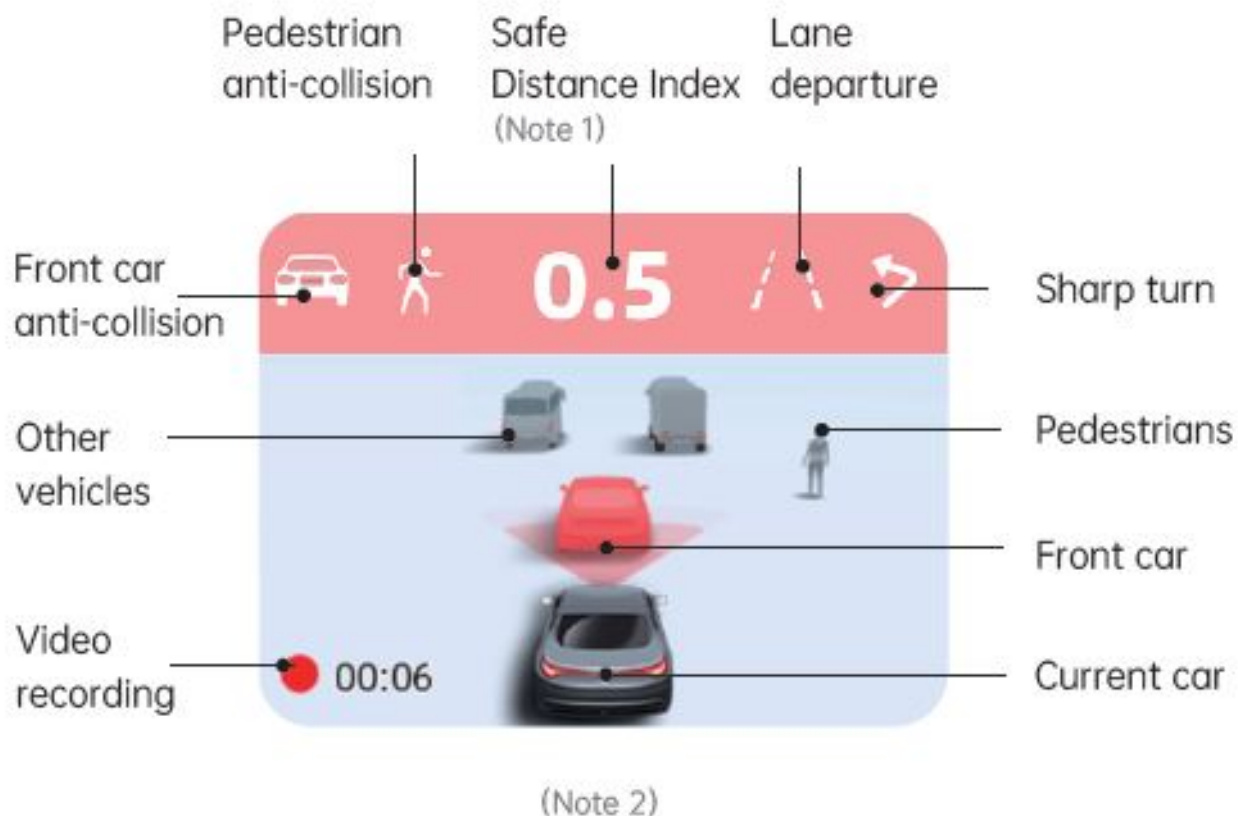
1. The width of different car models will affect the AI anti-collision algorithm's prediction of all collision risks. Please select your car type (for more accurate model selection, please optimize through the “anti-collision setting”).
2. The horizontal distance between the camera and the central axis of the windshield determines the accuracy of AI anti-collision algorithm to construct ground models. Please use the scale line at the bottom of this manual for measurement.
3. The APP provides a real-time image for adjustment preview. You can confirm it according to the relevant operation guidelines, and the anti-collision functions will be activated upon completion.
4. After the anti-collision function is activated, it is required to complete more accurate adjustment calculation by collecting data on a specific road environment. You need to keep the vehicle speed of more than 25km/h on a horizontal road with clear lane lines on both sides, and drive for 1-3 minutes without changing lanes. Then wait for its accurate adjustment to be completed in the following normal driving. While the accurate adjustment is completed, the prompt at the bottom right of the monitor (3D road viewing) will disappear.



Important Note: If objects with strong reflection and whiter light (such as paper towels and decorations) are placed on the dashboard, they may cause interference to the algorithm in some driving scenes and affect your experience. Please be sure to avoid them.

3D road viewing

After the anti-collision functions work effectively, the monitor will display the road perception results analyzed by MINIEYE professional AI algorithm and display dangerous collision warnings.



Note

1. **Safe distance index** This number is a time factor (seconds) obtained by calculating the absolute distance between the front car and the current speed of this car, the lower the number, the higher the risk of collision.
2. **Monitor display**: With the upgrade of AI algorithm functions, the display contents will be upgraded from time to time. Please refer to the actual product.

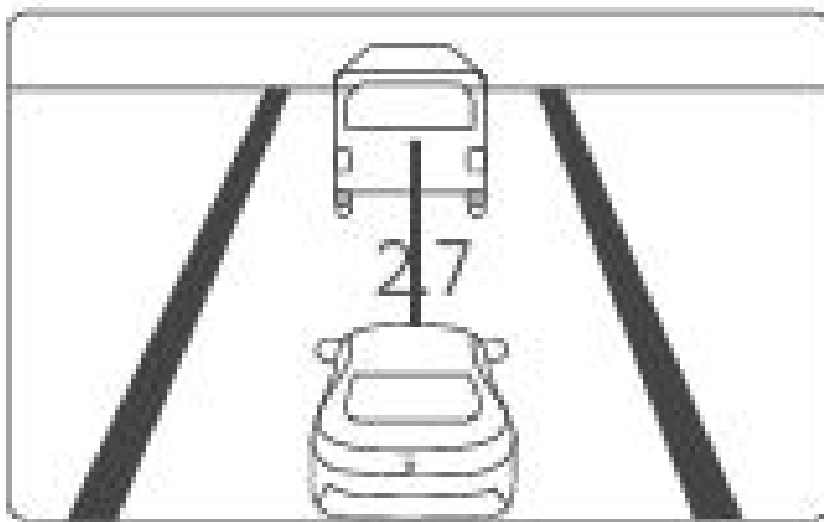
Real-time road viewing:

While the device is on, you can double-click the button on the top of the monitor to switch the 3D road viewing to a real-time viewing. At the same time, you can check the status of sound recording, mobile phone connection, memory card and GPS signal on the top bar.



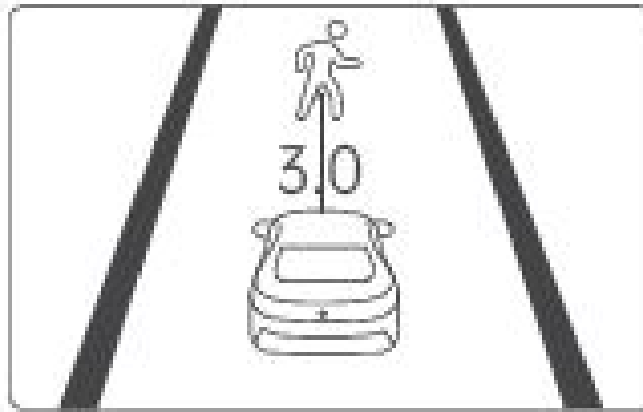
Anti-collision functions setting

Through “Device” Page – “Anti-Collision Settings”, you can enter to set various parameters of the anti-collision functions. Forward Collision Warning/Headway Monitoring Warning / Urban Forward Collision Warning Ensure that the car is at a safe distance from the front car in all scenes



Pedestrian Collision Warning

Monitor the collision risk of urban targets such as pedestrians, bicycles and motorcycles



Lane Departure Warning

Warning of dangerous lane changing behavior at high speed



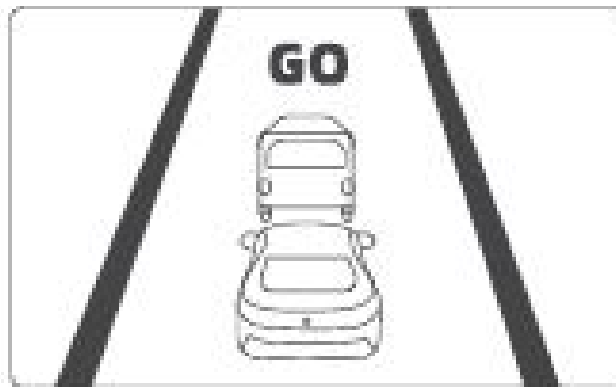
Harsh Acceleration/Cornering /Deceleration

Warning of dangerous driving habits.



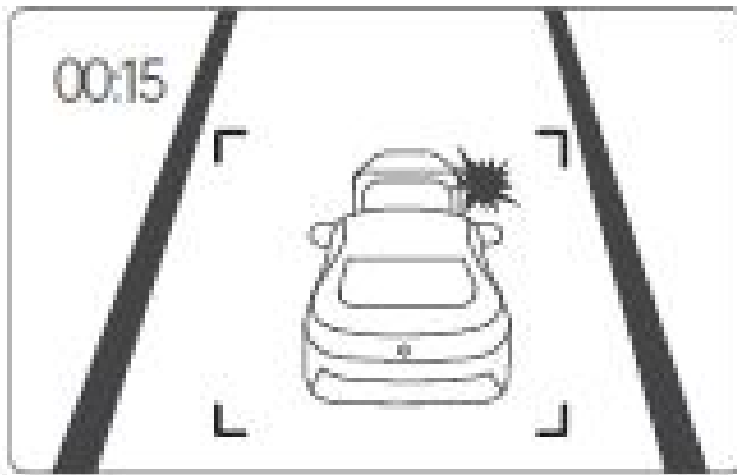
Stop & Go

Remind you to start when the front car leaves on a congested road



Emergent Collision Warning

Start recording when a collision is detected **Warm Tip:** In order to obtain a more accurate and safe driving experience, you can further improve the vehicle model data, reset the installation distance parameters, or re-adjust the image when the camera offset is too large.



Video Preview/Playback/Share

After completing the settings of the anti-collision functions, the APP will automatically enter the home page of "Device ", which can preview the current real-time image, playback video in the previous 2 hours, or enter the photo album to view all driving record videos. **Warm tip:** The files saved in the device can be viewed, downloaded and shared through home page "Device " - "Device Album".

Safety notice

Before using MINI EYE Intelligent Multi-Function Warning Device, please read the following safety notice carefully and take appropriate safety precautions. When you install the MINIEYE Intelligent Multi-Function Warning Device on the car, it means that you are aware of the following conditions and agree to use this product in accordance with the instructions.

1. MINI EYE Intelligent Multi-Function Warning Device is an advanced driving assistance system (ADAS) that can provide warnings to drivers in some potentially dangerous situations, but it is not an automatic driving system and cannot replace drivers to control cars under any circumstances. Drivers must always be awake and cautious, strictly abide by traffic rules and regulations, and ensure driving safety by themselves. Even when watching the monitor display or pressing the monitor button, all attention should be paid to driving.
2. MINI EYE Intelligent Multi-Function Warning Device uses the world's leading computer vision and deep-learning technology, but we can not guarantee the complete and accurate identification of all vehicles, pedestrians, lane lines or other traffic elements, nor can we guarantee to provide complete and accurate visual or sound warning.
3. External matters (e. g. stains, oil stains, water stains, dust, fingerprints, etc.) on the surfaces of car windshield and camera may cause some anti-collision functions failure. Please keep both the windshield and camera surface clean and dry to ensure clear vision of the camera. Do not touch or play with the camera at will.
4. Self-luminous/strongly-reflective/high-brightness objects (e. g. white paper, plastic bags, metal/ceramic/glass products, etc.) placed on the top of the dashboard may reflect images on the windshield, interfere with camera vision and cause some anti-collision functions failure.
5. Some bad weather may cause some anti-collision functions failure, including but not limited to: rain, snow, fog, haze, dust, typhoon, tornado, extreme cold and hot.
6. Some bad lighting conditions may cause some anti-collision functions failure, including but not limited to:

backlighting, tunnels, culverts, forests and other scenes with insufficient lighting, and scenes with strong light such as high beam, spotlight, laser, flame, explosion, etc.

7. Some poor road conditions may affect the intelligent adjustment and lane departure warning device of the MINIEYE intelligent multi-function warning device, including but not limited to: lane markings that do not meet the standards, severely worn lane markings, and soil/snow/ lane signs covered by foreign objects such as stagnant water.
8. Some special types of vehicles may not be accurately identified by MINIEYE Intelligent Multi-Function Warning Device, including but not limited to: military vehicles, ancient vehicles, exotic vehicles, exotic painting vehicles, special engineering vehicles, trailers loaded with special shaped items, and passing vehicles.
9. Some people with special postures or special shaped clothes may not be accurately identified by MINIEYE Intelligent Multi-Function Warning Device, including but not limited to: people wearing low-visibility clothing such as camouflage uniform, people in special postures such as squatting/kneeling/lying down, people performing sports movements such as dance/martial arts/gymnastics/yoga, and people riding horse or taking special transportation such as carriage.
10. The sudden appearance of unknown objects in the field of vision may cause some anti-collision functions failure for a short time, including but not limited to balloons, drones, flying toys, balls and sporting goods, high-altitude parabolic and floating garbage.
11. . By upgrading the version of AI anti-collision algorithm, the functional failure rate of the above special scenes will continue to decrease. Please refer to the actual experience.
12. . This device complies with Part 15 of the FCC Rules. Operation is subject to the following two conditions: This device may not cause harmful interference, and
This device must accept any interference received, including interference that may cause undesired operation
Warning: Changes or modifications to this unit not expressly approved by the party responsible for compliance could void the user's authority to operate the equipment. **Note:** This equipment has been tested and found to comply with the limits for a Class B digital device, pursuant to Part 15 of the FCC Rules. These limits are designed to provide reasonable protection against harmful interference in a residential installation. This equipment generates, uses and can radiate radio frequency energy and, if not installed and used in accordance with the instructions, may cause harmful interference to radio communications. However, there is no guarantee that interference will not occur in a particular installation. If this equipment does cause harmful interference to radio or television reception, which can be determined by turning the equipment off and on, the user is encouraged to try to correct the interference by one or more of the following measures:
 - Reorient or relocate the receiving antenna.
 - Increase the separation between the equipment and receiver.
 - Connect the equipment into an outlet on a circuit different from that to which the receiver is connected.
 - Consult the dealer or an experienced radio/TV technician for help. "This equipment complies with FCC RF radiation exposure limits set forth for an uncontrolled environment.
 - This equipment should be installed and operated with a minimum distance of 20 centimeters between the radiator and your body."

Cautions

1. MINIEYE does not bear any responsibilities to any loss caused by malfunction, information loss and improper operation of products.

- 2. Some functions may not work normally due to differences in vehicle conditions, driving behavior, driving environment, etc., and product functions may fail due to power off, abnormal temperature, collision, storage damage, etc.
- 3. Please pay attention to driving safety. The installation position of the device should not block the driving sight or affect vehicle settings such as airbags. Please do not debug the device or carry out APP operation during driving.
- 4. This product supports class10 high-speed memory cards with a maximum capacity of 128G. Please cut off the power supply before inserting or removing the memory card. Please use the high-quality memory cards purchased through regular suppliers. MINIEYE does not bear any responsibilities to any loss caused by the quality of the memory cards.
- 5. The normal working temperature range of this product is -20°C~70°C. It is forbidden to use it out of the indicated temperature environment. Please do not touch the device main unit in high temperature environment to prevent scalding.
- 6. Please do not modify this product by yourself. Please use the standard components such as car charger and power cables to ensure normal working and avoid device damage, explosion or fire.
- 7. If the battery is deformed, expanded or leaked, please do not continue to use this product.
- 8. Please use this product within the scope permitted by law.

Documents / Resources

	<p>Shenzhen Youjia Innov Tech MINIEYEC1 MINIEYE AI Collision Avoidance Device [pdf] User Guide</p> <p>MINIEYEC1, 2A5G5-MINIEYEC1, 2A5G5MINIEYEC1, MINIEYEC1 MINIEYE AI Collision Avoidance Device, MINIEYE AI Collision Avoidance Device</p>
-------------------------------------------------------------------------------------	--------------------------------------------------------------------------------------------------------------------------------------------------------------------------------------------------------------------------------------------------------------