



# Shenzhen Yitequ Technology MSRX6BT Card Reader User Guide

[Home](#) » [Shenzhen Yitequ Technology](#) » Shenzhen Yitequ Technology MSRX6BT Card Reader User Guide

## Contents [ [hide](#) ]

- 1 Shenzhen Yitequ Technology MSRX6BT Card Reader User Guide
- 2 Warning!
- 3 Windows quick start
- 4 Step 2: Connection
- 5 B. Bluetooth Model(MSR X6BT)
- 6 Step 3: USE
- 7 Read card
- 8 write card
- 9 Erase card
- 10 Copy card
- 11 Step 3: Connection
- 12 About DEFTUN
- 13 FCC Statement
  - 13.1 following measures:
- 14 Read More About This Manual & Download PDF:
- 15 Documents / Resources
- 16 Related Posts

# Shenzhen Yitequ Technology MSRX6BT Card Reader User Guide



## Warning!

1. The software CD coming with original package for each one, if it lost or can 't work because that any country 's custom hold it or damaged in shipment , you can download the latest version free from here:  
[http ://www.card-device.com/down load. asp](http://www.card-device.com/download.asp)
2. The software CD is small one, please check the photo



3. Please recharge the machine via usb recharger(as same as mobile recharger) or computer more than one hour before you use it the first time , if you are using MSR605X/MSR X6/MSR X6BT.
4. Please download "EasyMSR" app from google play or app store if you want to use the bluetooth encoder on mobile/Tablet.
5. You can search many vedios on youtube for how to use the machine .
6. Welcome to be our partner or reseller, please email us if any questions: [sales@deftun.com](mailto:sales@deftun.com)

## Windows quick start

Step 1: install Software

Note: MSR605/MSR606 need to install usb driver first, other models need not.



**(Open the CD/DVD-Rom while file)      (install usb driver & software)**

## Step 2: Connection

### A.USB Model(MSR605/MSR605X/MSR606/MSR606H/MSR609 /MSR X6)

1. Plug MSR writer into the computer's usb port.
2. run the MSR software.
3. Select port and connect

### B. Bluetooth Model(MSR X6BT)

1. Open the bluetooth connection on your computer.
2. Find the Bluetooth encoder and connect. Setting /control panel >Bluetooth>Find Bluetooth device>Match bluetooth encoder
3. Input the initial bluetooth match password(numbers "0000")
4. run the MSR software.
5. Select "Auto" connect option.

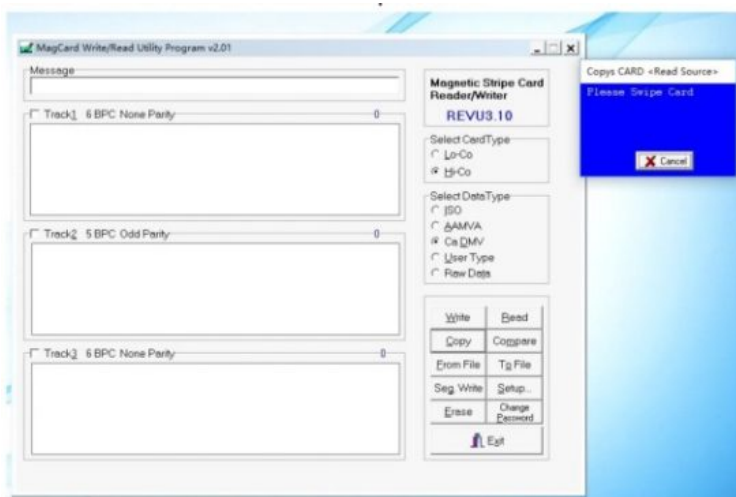
## Step 3: USE

### About Password

The software need to setting password for first use, you can enter directly if you don't want to set a password then it not prompted again (please remmber your password if you had set it , or you can unload the software first and install it again)

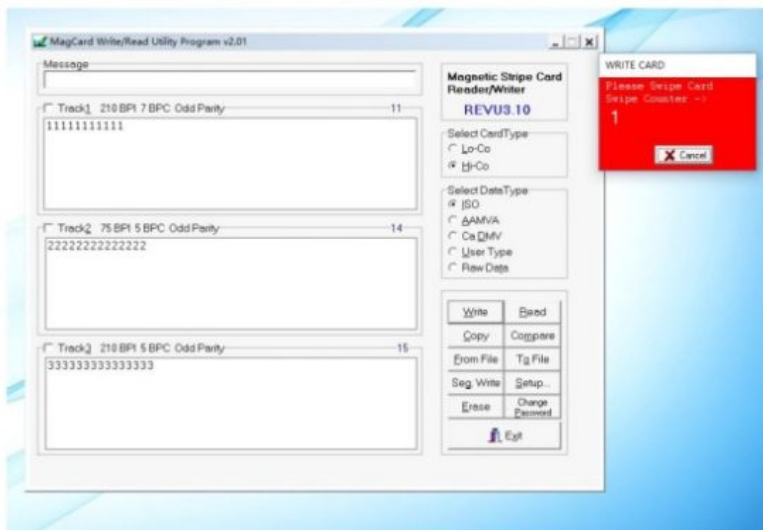
### Read card

Click "Read " buttom and swipe card.



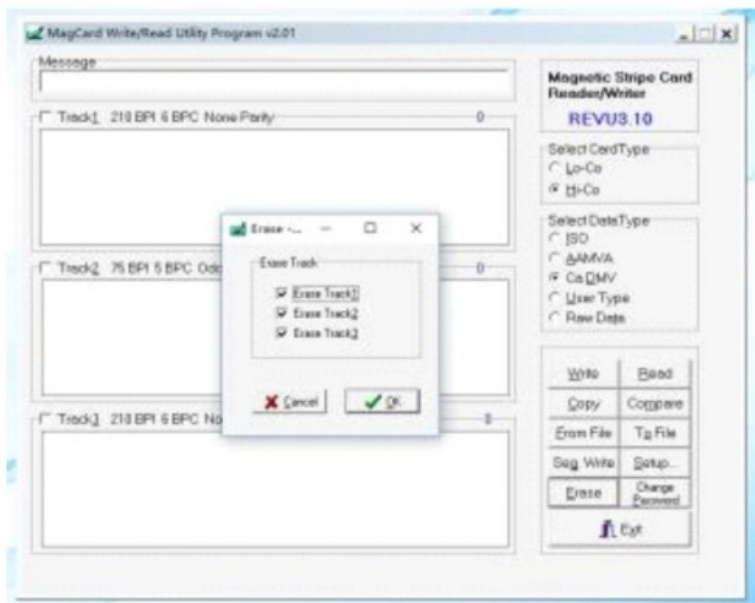
## write card

Input the data first and click “Write” button and swipe card .

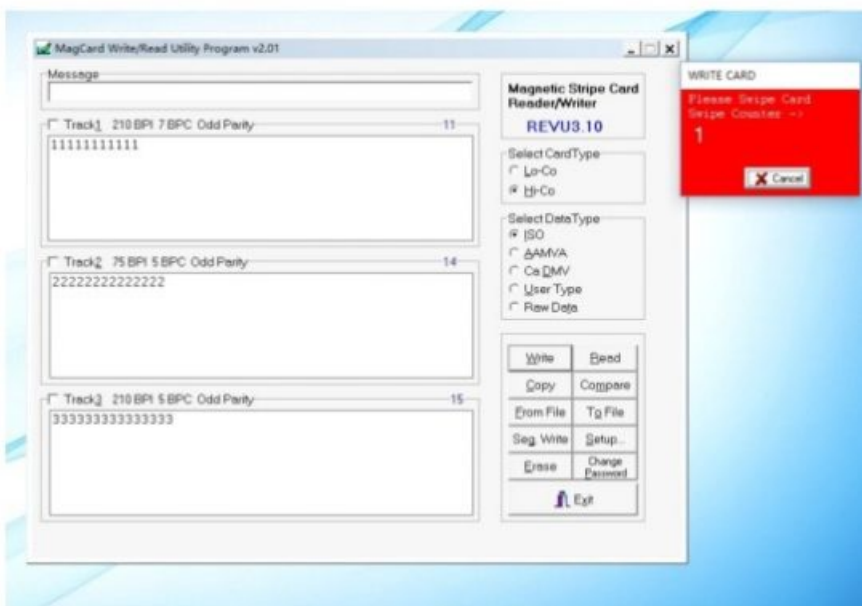
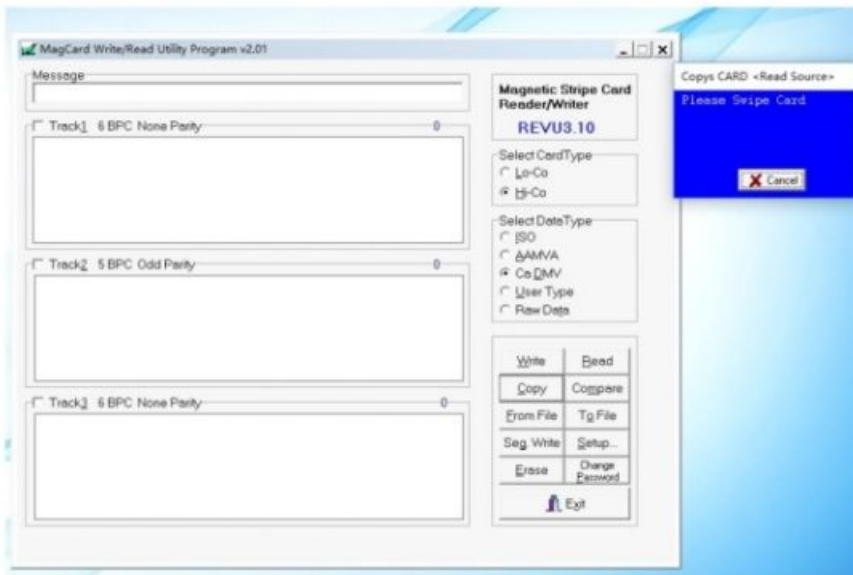


## Erase card

Click “Erase” button and select tracks and swipe card



## Copy card



### Note:

1. All the cards in the box are hico cards , please select “Hico” on the software. Please try to “Loco” if hico can ‘t work when you use other cards.
2. please select correct card type before use(The most of cards are ISO, driver card please select “CA OMV” or “AAMVA”, Hotel cards can ‘t work because it’s special!) Mac OS USE



3. Plug MSR writer into the Mac ‘s usb port.



Thank You For Using Our Products

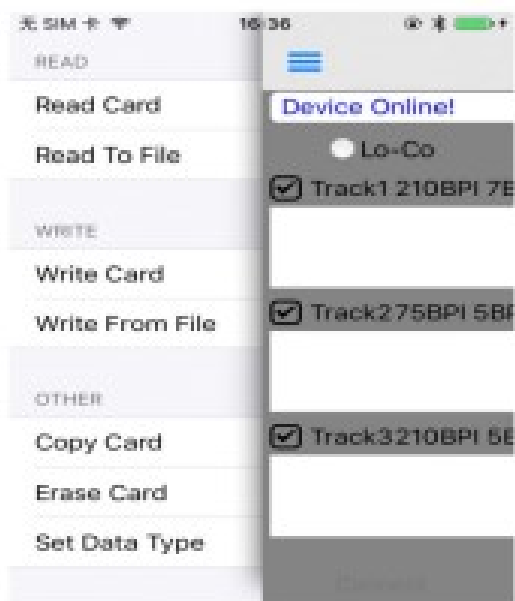


[www.deftun.com](http://www.deftun.com)

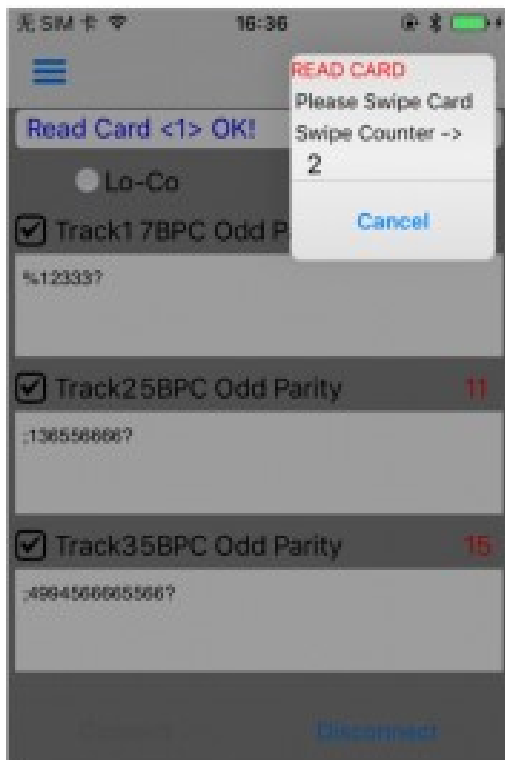
4. run the MSR software(Mac OS version )

### Step 3: Connection

Select Bluetooth writer that you want to connect and match. (Note: the Bluetooth match password is number "0000")

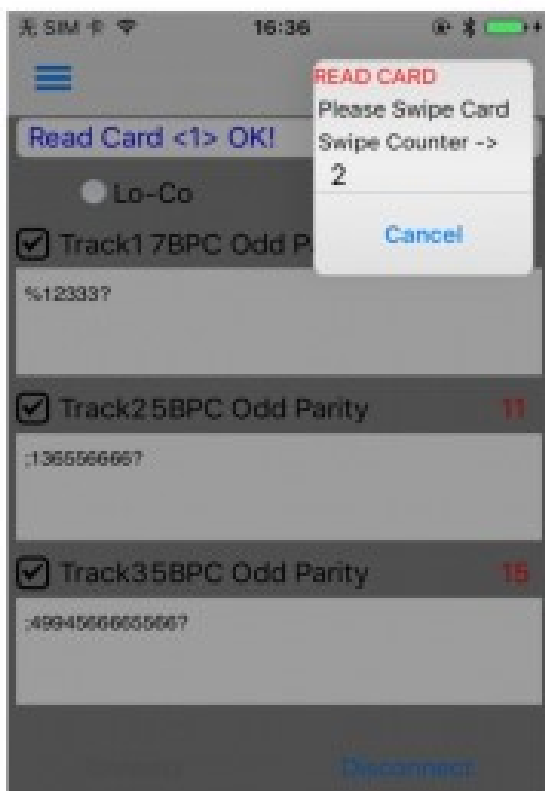


Step 4: Use  
Read



Click “Copy” button > read the original card > write to new card

### **Write**



Erase



Note: The app support bluetooth card writer only!

## About DEFTUN

We are professional manufacturer focus on magnetic cards machines, most of our products as MSR605, MSR605X, MSR606, MSR606H, MSR609, MSR X6, MSRX6(BT), MSR90, Minidx ... etc are very popular in USA, Canada, Europe, Mexico, Brazil, India and more countries, thanks so much for thousands of buyers from all over the world choose our products, that push us to make the magnetic stripe card machines to be better and easier to use, we'll provide the best quality and best price always.

"MSR605" "MSR606" "MSR X6" "MiniDX" all registered Trademarks by DEFTUN. Copyright © Deftun Inc. All rights reserved.

## FCC Statement

This equipment has been tested and found to comply with the limits for a Class B digital device, pursuant to part 15 of the FCC Rules. These limits are designed to provide reasonable protection against harmful interference in a residential installation. This equipment generates, uses and can radiate radio frequency energy and, if not installed and used in accordance with the instructions, may cause harmful interference to radio communications. However, there is no guarantee that interference will not occur in a particular installation. If this equipment does cause harmful interference to radio or television reception, which can be determined by turning the equipment off and on, the user is encouraged to try to correct the interference by one or more of the

following measures:

- Reorient or relocate the receiving antenna.
- Increase the separation between the equipment and receiver.
- Connect the equipment into an outlet on a circuit different from that to which the receiver is connected.
- Consult the dealer or an experienced radio/TV technician for help. Caution: Any changes or modifications to



this device not explicitly approved by manufacturer could void your authority to operate this equipment.

This device complies with part 15 of the FCC Rules. Operation is subject to the following two conditions: (1)

This device may not cause harmful interference, and (2) this device must accept

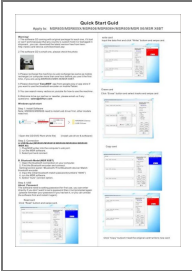
any interference received, including interference that may cause undesired operation.

RF Exposure Information

The device has been evaluated to meet general RF exposure requirement. The device can be used in portable exposure condition without restriction.

***Read More About This Manual & Download PDF:***

**Documents / Resources**

	<p><a href="#">Shenzhen Yitequ Technology MSR6BT Card Reader</a> [pdf] User Guide MSR6BT, 2A4HW-MSR6BT, 2A4HWMSR6BT, MSR6BT Card Reader, Card Reader</p>
---	--