



Shenzhen Xunman Technology M-1200DN Mini WiFi Extender Signal Amplifier User Manual

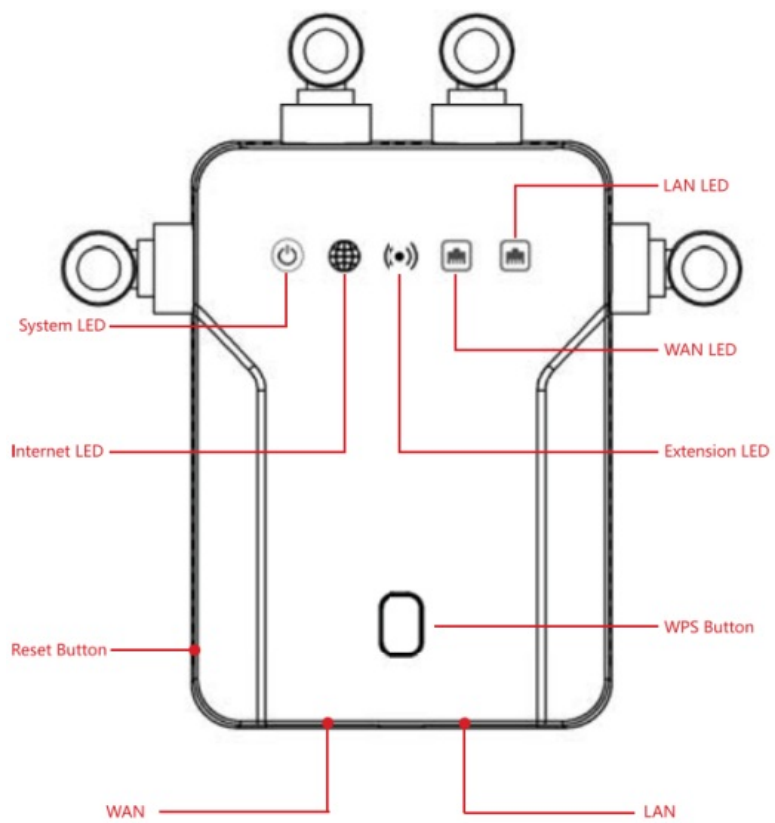
[Home](#) » [Shenzhen Xunman Technology](#) » Shenzhen Xunman Technology M-1200DN Mini WiFi Extender Signal Amplifier User Manual 






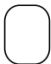
Shenzhen Xunman Technology M-1200DN Mini WiFi Extender Signal Amplifier User Manual

Contents

- [1 Working condition](#)
- [2 Working mode Diagram](#)
- [3 Quick Installation Guide](#)
- [4 Wi-Fi Repeater mode setup](#)
- [5 AP mode Setting](#)
- [6 FAQ \(Frequently Asked Questions \)](#)
- [7 FCC STATEMENT](#)
- [8 Documents / Resources](#)
- [9 Related Posts](#)

Working condition



Icon	Indication	Status
	System LED	The system LED will stay on after power on for 3 seconds.30 seconds later,the system LED will flash slowly and the machine will work normally.
	Internet LED	When the machine is in Repeater or AP mode and the Internet connection is correct .The Internet LED is on,otherwise it is off.
	Extension LED	<ul style="list-style-type: none"> • A. The LED is green,indicating that the signal between the repeater and the router is full. • B. The LED is yellow,indicating that the signal between the repeater and the router is normal. • C. The LED is red,indicating that the signal between the repeater and the router is poor.
	WAN/LAN LED	When network cable is connecting,the LED will flash quickly,otherwise it will be off.
	Reset button	Press and hold the reset key for 5 seconds,the system will be reset.
	WPS button	<p>Short press, the red LED flashes quickly. The red light will be on for 2 seconds when match successfully,and the machine will restart automatically.</p> <p>The red light will be off for 2 seconds when matching is unsuccessful or overtime, and the machine MI restart automatically too.</p>

Working mode Diagram

Note: If you need to connect the network cable please connect the network cable After the configuration is completed.

Repeater Mode: As a wireless signal extender

1. **A.** Extend your Wi-Fi signal without using any cables to reduce wiring troubles.

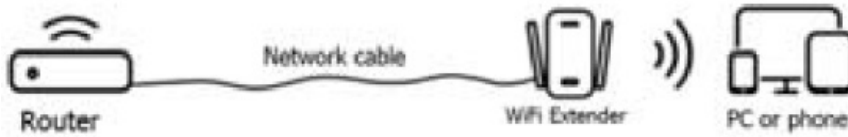


2. **B.** Extend your Wi-Fi signal with a cable, connect your device and extender Stably.



AP Mode: As a wired signal extender (access point)

Get better WiFi speed by connecting the router and the extender with network cable in the poor WiFi signal area.



Quick Installation Guide

When the machine work normally, use the mobile phone to search and connect to WiFi 2.4G pro_xxxxxx or WiFi 5G pro_xxxxxx, (xxxxxx is the last 6 numbers of the repeater MAC address)

Note: If the mobile phone does not automatically jump to setting page after connecting, please click “forget” the wifi name that has been connected on the mobile in wifi manage, turn off the wifi and then reopen the wifi to search it, or input “ 192.168.11.1 “.



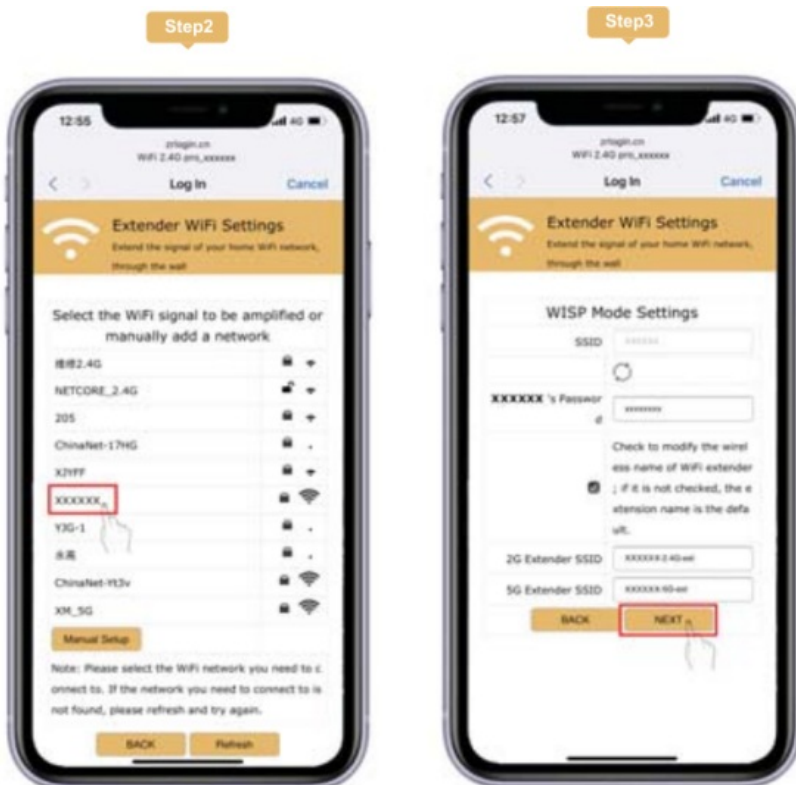
Wi-Fi Repeater mode setup

- **Step1:** Click repeater mode to enter the network search page.



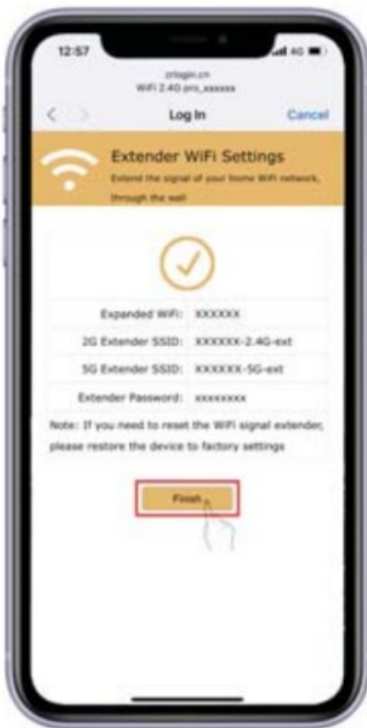
- **Step 2.** Select the wireless signal you want to expand, if it is a hidden network, you need to add it manually.
- **Step 3:** Enter your router connection password and click “NEXT”.

If you don't want the same name as your router, please choose and input the new name.



- **Step 4:** Click the “Finish” button to complete the relay mode configuration (The extended WiFi's password is the same as the routers' by default)
- **Step 5:** Complete Repeater Mode setting.

Step4



Step5



AP mode Setting

- **Step 1:** Click to Select “AP” mode to enter the setting page.

Step1



- **Step 2:** Set the wireless name and password with more than 8 digits(the wireless name and password can be set according to personal preference).

Step2



- **Step 3:** Click the “Finish” button to complete the AP mode configuration.
- **Step 4:** Complete AP mode setting.

Step3



Step4



FAQ (Frequently Asked Questions)

1. Q1: What should I do if the mobile phone is connected to the extender SSID, but it does not automatically jump to the login interface?

A1: If the mobile phone is connected to the extender SSID, but it does not jump to login interface; you can open

the mobile browser and enter "192.168.11.1" to enter.

A2: Reset the extender(plug in the extender and wait for the system light to flash,press the reset button to restore the factory settings)

2. Q2: After the relay mode extension is set successfully,what should I do if the extension signal is connected but there is no network?

A1: Please check whether the network light is on for a long time; if it is not,please check whether the router can go online normally.

A2: Reset the extender(plug in the extender and wait for the sysem light to flash,press the reset button to restore factory settings)

A3: Power off the router and restart it.

3. Q3: After the relay mode extension is set successfully,what should I do if the extension lights and network lights are not on?

A1: In this case,the connection password of the upper-level router is incorrectly entered. Reset the extender and reset the extension.

4. Q4: The signal connected to the extender is good,but the Internet speed is slow,what should I do?

A1: Check the status of the extension light,if it is red,please move the position of the repeater until the extension light is green.

A2: Restart the router and reset the extender.

A3: The extender only amplifies the signal of the original router to extend the coverage distance;it will not increase the network speed on the basis of the original network speed.

5. Q5: What should I do if the network speed is only half of the original when the repeater is connected?

A1: If the repeater uses a single frequency band for receiving and transmitting; this means that the bandwidth of the repeater is actually divided into two halves,half is used to reveive signals from the upper-level router,and half is used to transmit wireless signals for users Use,resulting in the speed of the Internet halved. The solution is to use the 2.4G signal for reveiving and connecting with the upper-level router,and the user connection uses a 5G signal;or you can use the 5G signal for receiving and connection with the upper-level router,and the user connection uses a 2.4G signal.In this way, the bandwidth of the amplifier can be used to the greatest extent and the actual network speed can be avoided.

6. Q6: What should I do if I want to reset the extension name and password?

A1: Please reset the extender and reset it.When the system button is slow flashing,the reset is success full.

FCC STATEMENT

Warning: This device complies with Part 15 of the FCC Rules. Operation is subject to the following two conditions:

1. this device may not cause harmful interference, and
2. this device must accept any interference received, including interference that may cause undesired operation.

Changes or modifications not expressly approved by the party responsible for compliance could void the user's authority to operate the equipment.

NOTE: This equipment has been tested and found to comply with the limits for a Class B digital device, pursuant to Part 15 of the FCC Rules. These limits are designed to provide reasonable protection against harmful interference in a residential installation. This equipment generates uses and can radiate radio frequency energy

and, if not installed and used in accordance with the instructions, may cause harmful interference to radio communications. However, there is no guarantee that interference will not occur in a particular installation. If this equipment does cause harmful interference to radio or television reception, which can be determined by turning the equipment off and on, the user is encouraged to try to correct the interference by one or more of the following measures:

- Reorient or relocate the receiving antenna.
- Increase the separation between the equipment and receiver.
- Connect the equipment into an outlet on a circuit different. from that to which the receiver is connected.
- Consult the dealer or an experienced radio/TV technician for help.

NOTE: This device and its antenna(s) must not be co-located or operation in conjunction with any other antenna or transmitter

RF Exposure Statement

To maintain compliance with FCC’ s RF Exposure guidelines, This equipment should be installed and operated with minimum distance of 20cm the radiator your body. This device and its antenna(s) must not be co-located or operation in conjunction with any other antenna or transmitter

Documents / Resources

	<p>Shenzhen Xunman Technology M-1200DN Mini WiFi Extender Signal Amplifier [pdf] User Manual</p> <p>M-1200DN, M1200DN, 2A5M6-M-1200DN, 2A5M6M1200DN, M-1200DN Mini WiFi Extender S ignal Amplifier, M-1200DN Mini WiFi Extender Signal Amplifier</p>
---	--