



Shenzhen Xiaoyi lot Technology 1200M-ZJQ-2 WiFi Repeater User Guide

[Home](#) » [Shenzhen Xiaoyi lot Technology](#) » Shenzhen Xiaoyi lot Technology 1200M-ZJQ-2 WiFi Repeater User Guide 

Contents

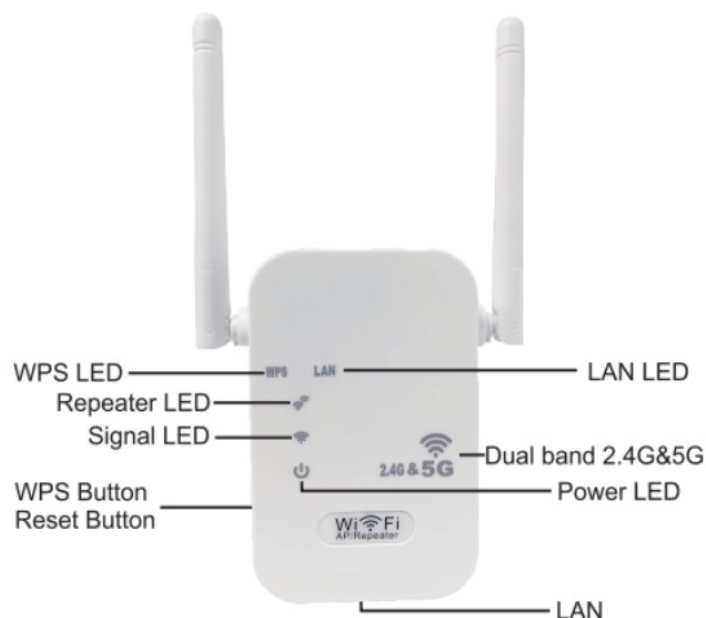
- [1 Shenzhen Xiaoyi lot Technology 1200M-ZJQ-2 WiFi Repeater](#)
- [2 INSTRUCTIONS](#)
- [3 FCC WARNING](#)
- [4 Documents / Resources](#)
- [5 Related Posts](#)

SHENZHEN

Shenzhen Xiaoyi lot Technology 1200M-ZJQ-2 WiFi Repeater

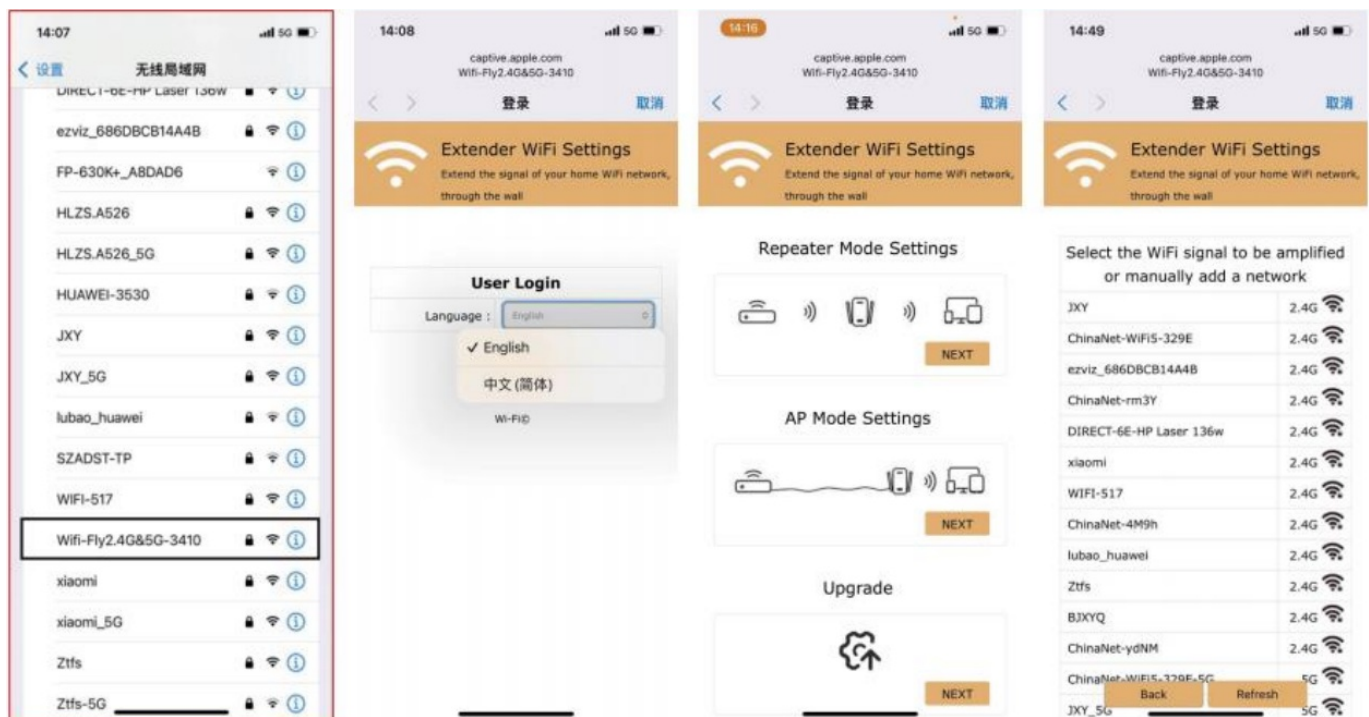


INSTRUCTIONS

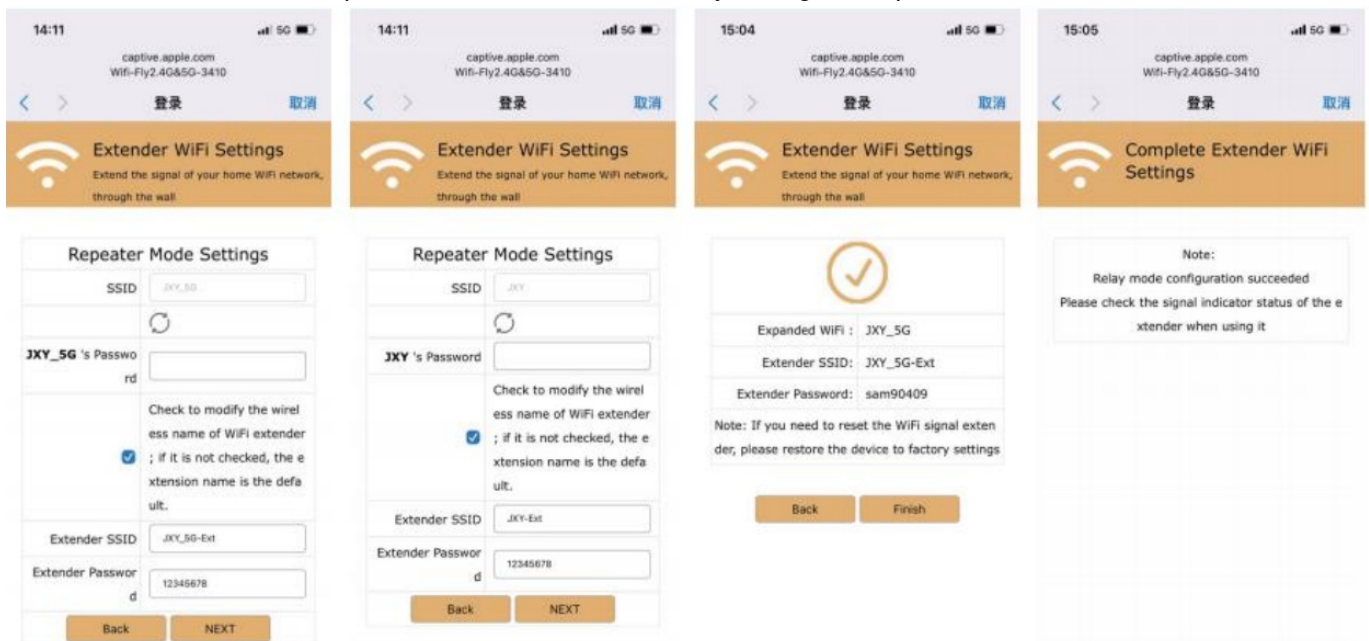


2.4G&5G	Dual band 2.4G&5G
Power LED	The power on indicator is on
Signal LED	After power on for about 20 seconds, the signal indicator is on,Connection settings can be made
Repeater LED	The expansion is successful, the indicator is on, and the network connection is OK
LAN LED	Access the network cable, connect the superior route, and the indicator light is on
WPS LED	WPS connection indicator
Reset/ WPS Button	Press and hold for 7 seconds, and all the indicator lights are off,The machine returns to the factory state. Short press for 2 seconds, WPS indicator flashes;After the connection with the superior router is successful, the indicator is on

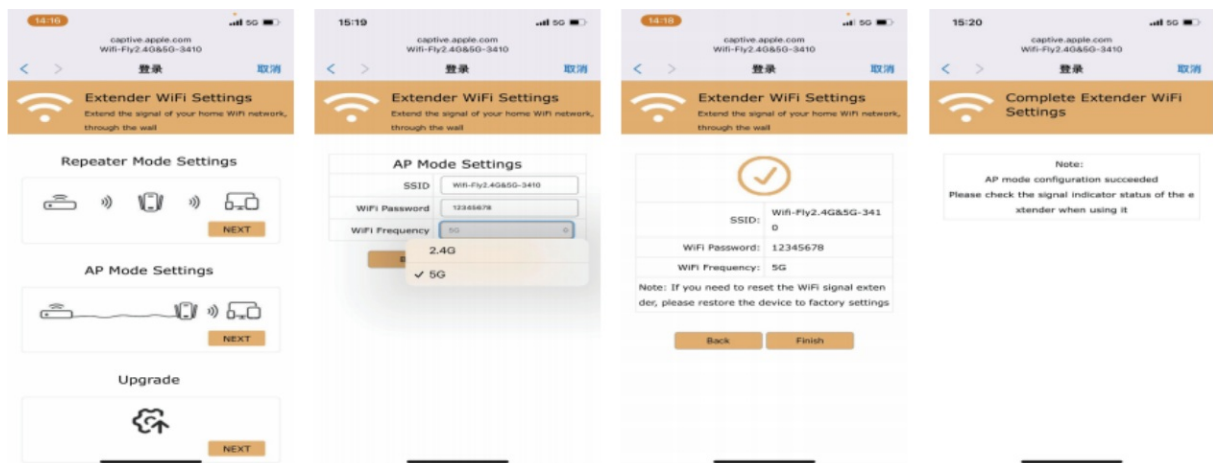
When the machine enters the power on state, the signal indicator light is on, use the mobile phone or computer WiFi to search and connect wifi-fly2.4g & 5g-xxxx, click the connection, and the initial password 12345678 will automatically jump to the setting page (if the jump interface does not appear, you need to return to the WiFi connection again. If this operation is still invalid, you can manually enter the website 192.168.59.1 in the browser), After entering the administrator login interface, select the language for the next operation. The next step in relay mode is as shown in the figure. Select the superior network WiFi to be extended and enter the password



After expansion, the name and password can be modified. Continue to the next step until the display configuration is successful. Return to the mobile phone or computer and select WiFi connection after expansion to surf the Internet, or connect the computer to surf the Internet directly through LAN port network cable



After entering the administrator login interface, select the language for the next operation. The next step in AP mode is shown in the figure. The name and password can be modified. Continue to the next step until the display configuration is successful. Return to the mobile phone or computer and select the extended WiFi connection to surf the Internet



FCC WARNING

Note: This equipment has been tested and found to comply with the limits for a Class B digital device, pursuant to part 15 of the FCC Rules. These limits are designed to provide reasonable protection against harmful interference in a residential installation. This equipment generates uses and can radiate radio frequency energy and, if not installed and used in accordance with the instructions, may cause harmful interference to radio communications. However, there is no guarantee that interference will not Occur in a particular installation. If this equipment does cause harmful interference to radio or television reception, which can be determined by turning the equipment off and on, the user is encouraged to try to correct the interference by one or more of the following measures:

- Reorient or relocate the receiving antenna.
- Increase the separation between the equipment and receiver.
- Connect the equipment into an outlet on a circuit different from that to which the receiver is connected.
- Consult the dealer or an experienced radio-tv technician for help.

This equipment complies with FcC radiation exposure limits set forth for an uncontrolled environment. This equipment should be installed and operated with a minimum distance 20cm between the radiator & your body.

This device complies with part 15 of the FCC Rules. Operation is subject to the following two conditions:

1. This device may not cause harmful interference, and
2. this device must accept any interference received, including interference that may cause undesired operation.

Documents / Resources

	<p>Shenzhen Xiaoyi lot Technology 1200M-ZJQ-2 WiFi Repeater [pdf] User Guide 1200M-ZJQ-2, 1200MZJQ2, 2AVVA-1200M-ZJQ-2, 2AVVA1200MZJQ2, WiFi Repeater, 1200M-ZJQ-2 WiFi Repeater</p>
--	--